

WAAS CH <b>86436</b> <b>W18A</b>	APP CRS <b>183°</b>	Rwy Idg TDZE <b>467</b> Apt Elev <b>472</b>	<b>5001</b>
--	------------------------	---	-------------

# RNAV (GPS) RWY 18

DAVISS COUNTY (DCY)

RNP APCH - GPS.

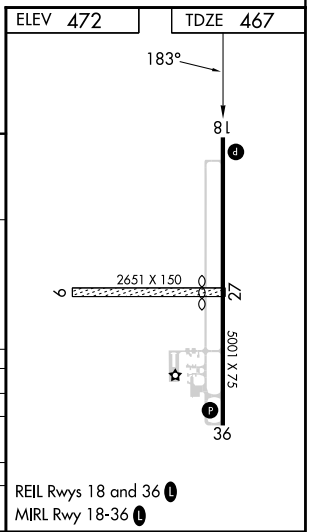
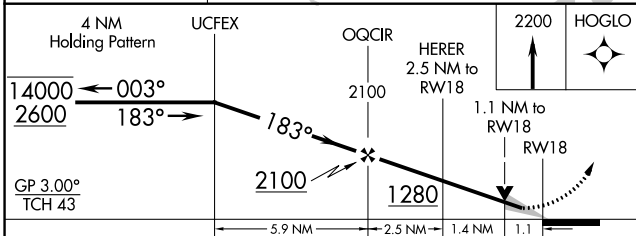
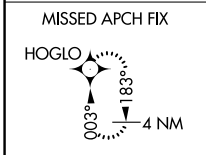
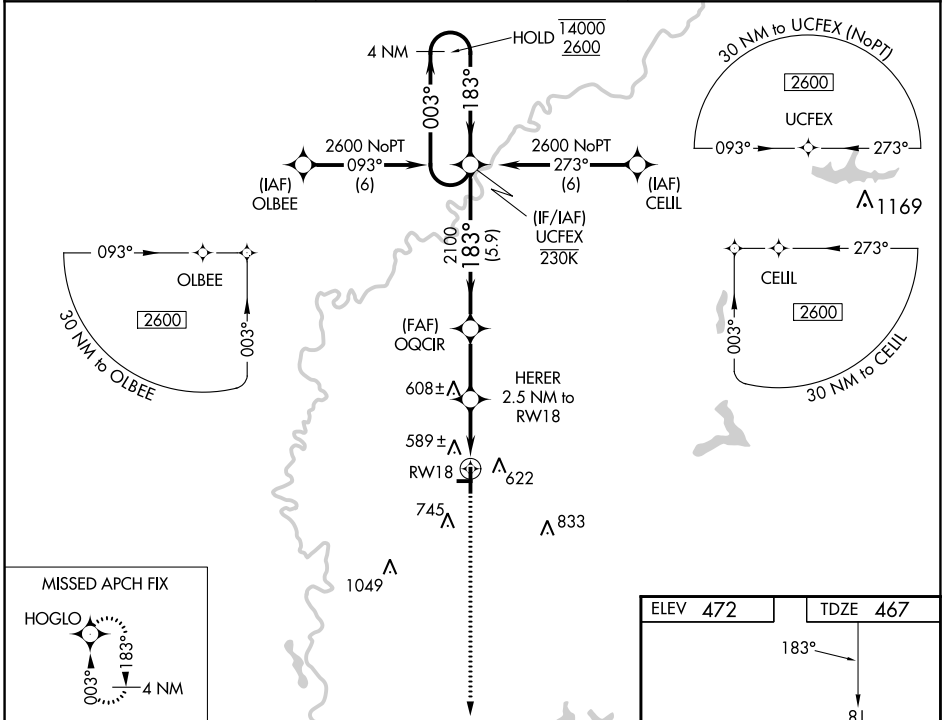
**⚠** Circling NA to Rws 9 and 27. Circling to Rwy 36 NA at night. For uncompensated Baro-VNAV systems, LNAV/VNAV NA below -15°C or above 54°C.

MISSED APPROACH:  
Climb to 2200 direct  
HOGLO and hold.

AWOS-3PT  
**124.1**

EVANSVILLE APP CON ★  
**125.6 343.7**

UNICOM  
**122.8 (CTAF) 0**



EC-2, 22 FEB 2024 to 21 MAR 2024

EC-2, 22 FEB 2024 to 21 MAR 2024