


LOC/DME I-DJK 109.95 Chan 36 (Y)	APP CRS 022°	Rwy Idg 7026 TDZE 913 Apt Elev 913
--	------------------------	---

ILS or LOC RWY 2

DE KALB TAYLOR MUNI (DKB)

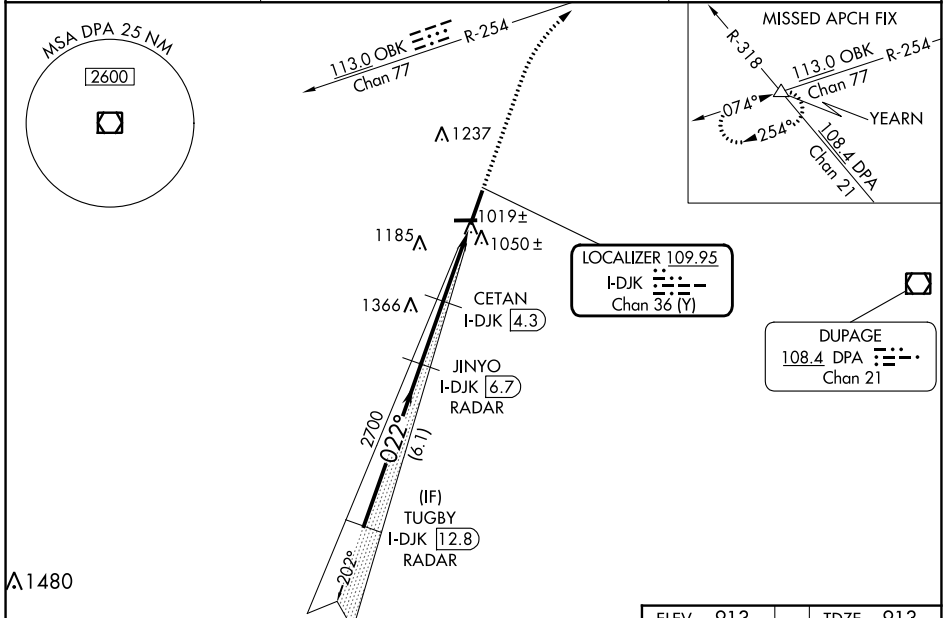
RADAR required for procedure entry. DME or RADAR required.

VDP NA with Aurora altimeter setting. When local altimeter setting not received, use Aurora altimeter setting and increase DA to 1174 feet and all MDA 80 feet; CETAN fix minimums increase Circling Cat C and D visibility 1/4 SM. For inop ALS, increase S-ILS 2 all Cats visibility to 3/8 SM. CETAN fix minimums: For inop ALS, increase S-LOC 2 Cat C and D visibility to 1 SM.

MALS 

MISSED APPROACH:
Climb to 3000 on heading 022° and OBK VOR/DME R-254 to YEARN 1nt and hold.

AWOS-3 119.075	CHICAGO APP CON 133.5 349.0	UNICOM 122.7 (CTAF) 0
--------------------------	---------------------------------------	--



VGSI and ILS glidepath not coincident (VGSI Angle 3.00/TCH 53).

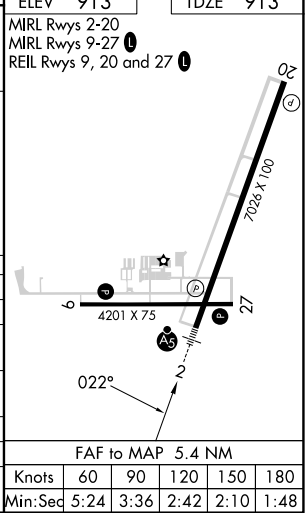
TUGBY I-DJK 12.8 RADAR	JINYO I-DJK 6.7 RADAR	CETAN I-DJK 4.3	I-DJK 2.4	I-DJK 1.3
2700	2700	1900		
GS 3.00° TCH 55	022°	022°		
6.1 NM	2.4 NM	1.9	1.1	

ELEV 913	TDZE 913
MIRL Rwys 2-20	OBK R-254
MIRL Rwys 9-27	YEARN
REIL Rwys 9, 20 and 27	

CATEGORY	A	B	C	D
S-ILS 2	1113-1/2		200 (200-1/2)	
S-LOC 2	1900-3/4 987 (1000-3/4)	1900-1 987 (1000-1)	1900-2 1/2	987 (1000-2 1/2)
CIRCLING	1900-1 1/4 987 (1000-1 1/4)	1900-1 1/2 987 (1000-1 1/2)	1900-3	987 (1000-3)

CETAN FIX MINIMUMS (DME REQUIRED)

S-LOC 2	1280-1/2 367 (400-1/2)	1280-5/8 367 (400-5/8)
CIRCLING	1360-1 447 (500-1)	1500-1 587 (600-1)
	1600-2 687 (700-2)	1740-2 3/4 827 (900-2 3/4)



EC-3, 22 FEB 2024 to 21 MAR 2024

EC-3, 22 FEB 2024 to 21 MAR 2024

FAF to MAP 5.4 NM	Knots	60	90	120	150	180
	Min:Seq	5:24	3:36	2:42	2:10	1:48

WAAS CH 58109 W02A	APP CRS 021°	Rwy Idg TDZE Apt Elev	7026 913 913
--	------------------------	-----------------------------	---

RNAV (GPS) RWY 2

DE KALB TAYLOR MUNI (DKB)

▼ Baro-VNAV NA when using Aurora altimeter setting. For uncompensated Baro-VNAV systems, LNAV/VNAV NA below -16°C (4°F) or above 47°C (116°F). DME/DME RNP-0.3 NA. VDP NA when using Aurora altimeter setting. When local altimeter setting not received, use Aurora altimeter setting and increase all DA 61 feet and all MDA 80 feet; increase all LPV and LNAV/VNAV visibilities, LNAV Cats C/D visibility, and Circling Cats C/D visibility ¼ mile. For inop MALSR, increase LPV all Cats visibility to 1.

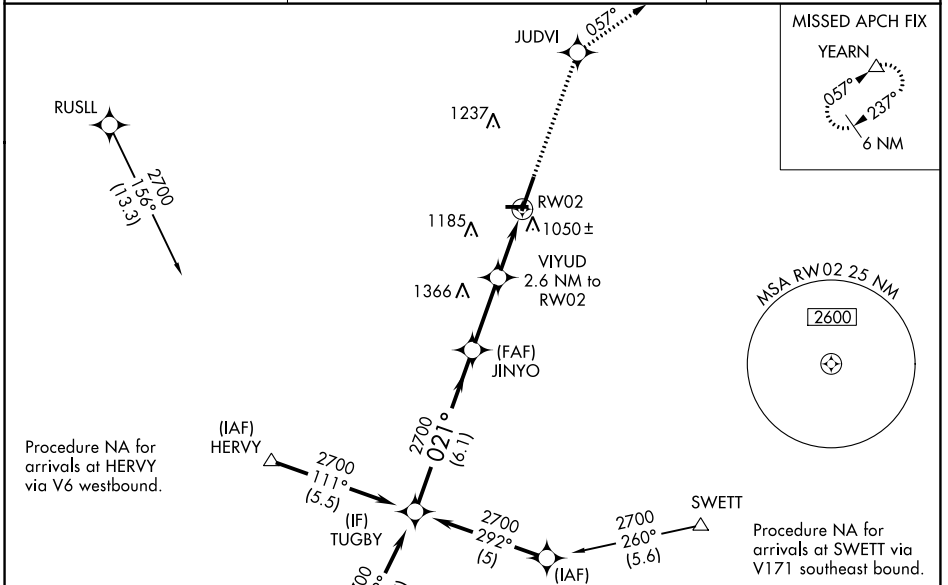
MALSR

MISSED APPROACH:
Climb to 3000 direct JUDVI and via 057° track to YEARN and hold.

AWOS-3
119.075

CHICAGO APP CON
133.5 349.0

UNICOM
122.7 (CTAF) 0



EC-3, 22 FEB 2024 to 21 MAR 2024

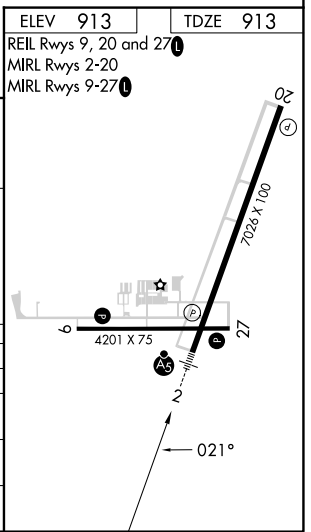
EC-3, 22 FEB 2024 to 21 MAR 2024

ELEV 913	TDZE 913
REIL Rwy 9, 20 and 27	
MIRL Rwy 2-20	
MIRL Rwy 9-27	

Procedure Turn NA

VGSI and RNAV glidepath not coincident (VGSI Angle 3.00/TCH 53).

TUGBY	JINYO	VIYUD 2.6 NM to RW02	JUDVI	YEARN
2700	2700	*1800	3000	tr 057°
*LNNAV only.		*1.2 NM to RW02		
GP 3.00° TCH 55				
6.1 NM		2.8 NM	1.4 NM	1.2 NM
CATEGORY	A	B	C	D
LPV DA	1207-½		294 (300-½)	
LNAV/VNAV DA	1360-1		447 (500-1)	
LNAV MDA	1360-½	447 (500-½)	1360-¾ 447 (500-¾)	1360-1 447 (500-1)
CIRCLING	1360-1 447 (500-1)	1500-1 587 (600-1)	1600-2 687 (700-2)	1740-2¾ 827 (900-2¾)



WAAS CH 50409 W20A	APP CRS 202°	Rwy Idg TDZE Apt Elev	7026 905 913
--	------------------------	-----------------------------	---

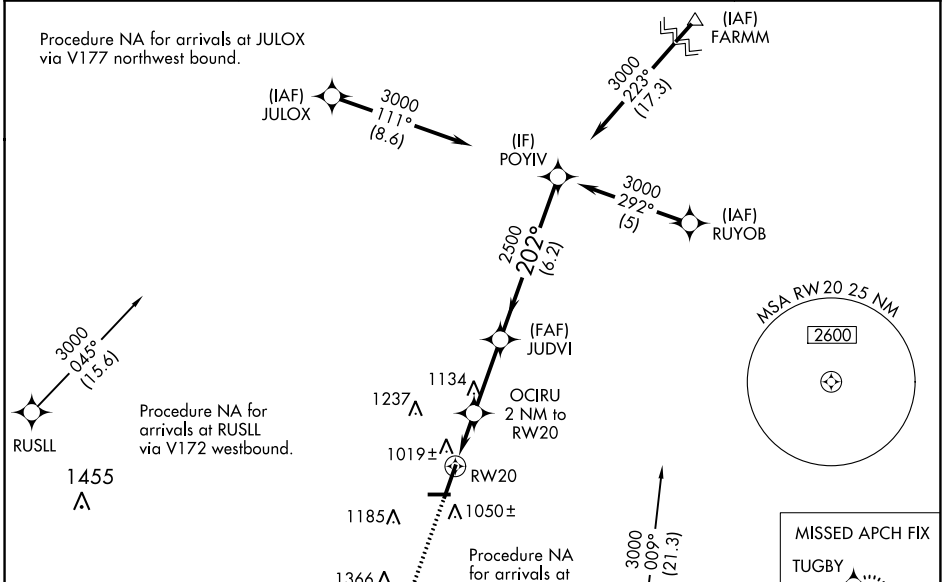
RNAV (GPS) RWY 20

DE KALB TAYLOR MUNI (DKB)

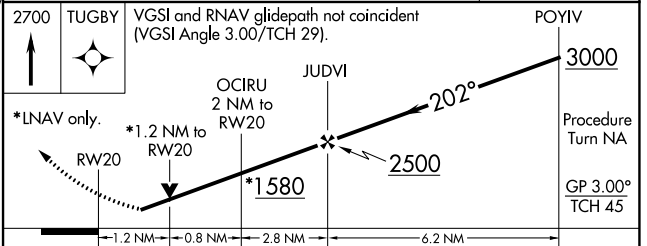
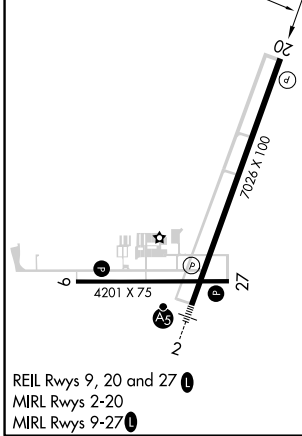
⚠ Baro-VNAV NA when using Aurora altimeter setting. For uncompensated Baro-VNAV systems, LNAV/VNAV NA below -16°C (4°F) or above 47°C (116°F).
⚠ DME/DME RNP-0.3 NA. Visibility reduction by helicopters NA. VDP NA when using Aurora altimeter setting. When local altimeter setting not received, use Aurora altimeter setting and increase all DA 61 feet and all MDA 80 feet; increase all LPV and LNAV/VNAV visibilities, LNAV Cat D visibility, and Circling Cats C/D visibility ¼ mile.

MISSED APPROACH:
Climb to 2700 direct TUGBY and hold.

AWOS-3 119.075	CHICAGO APP CON 133.5 349.0	UNICOM 122.7 (CTAF) 0
--------------------------	---------------------------------------	---------------------------------



ELEV 913	TDZE 905
----------	----------



CATEGORY	A	B	C	D
LPV DA		1155-¾	250 (300-¾)	
LNAV/VNAV DA		1430-1¾	525 (600-1¾)	
LNAV MDA	1320-1	415 (500-1)	1320-1¼	415 (500-1¼)
CIRCLING	1360-1 447 (500-1)	1500-1 587 (600-1)	1600-2 687 (700-2)	1740-2¾ 827 (900-2¾)

EC-3, 22 FEB 2024 to 21 MAR 2024

EC-3, 22 FEB 2024 to 21 MAR 2024

WAAS CH 72709 W27A	APP CRS 272°	Rwy Idg TDZE 912 Apt Elev 913	4201
--	------------------------	---	-------------

RNAV (GPS) RWY 27

DE KALB TAYLOR MUNI (DKB)

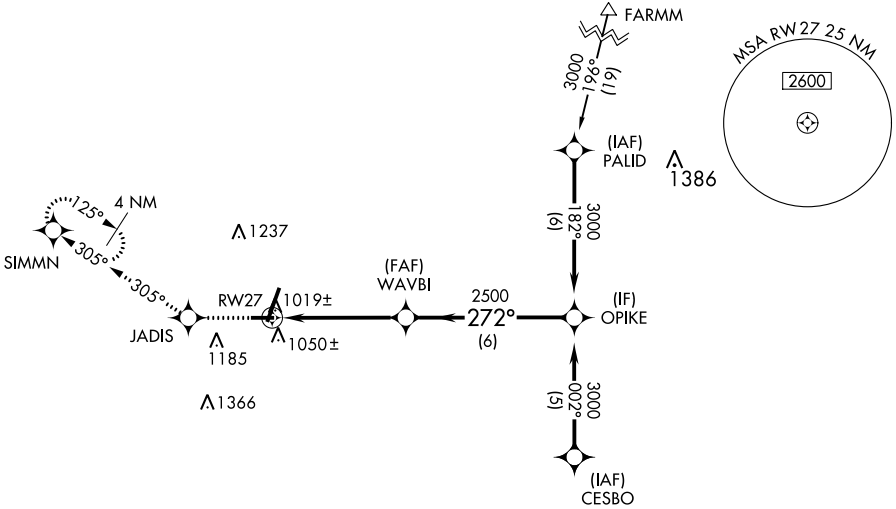
⚠ When local altimeter setting not received, use Aurora altimeter setting and increase all DA 61 feet and all MDA 80 feet; increase all LPV and LNAV/VNAV visibilities, LNAV Cats C/D visibility, and Circling Cats C/D visibility ¼ mile. Baro-VNAV NA when using Aurora altimeter setting. VDP NA when using Aurora altimeter setting. For uncompensated Baro-VNAV systems, LNAV/VNAV NA below -16° C (4°F) or above 47° C (116° F). DME/DME RNP-0.3 NA.

MISSED APPROACH: Climb to 3000 direct JADIS and via 305° track to SIMMN and hold.

AWOS-3
119.075

CHICAGO APP CON
133.5 349.0

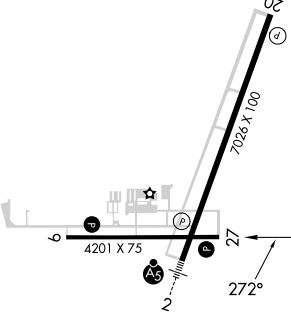
UNICOM
122.7 (CTAF) 0



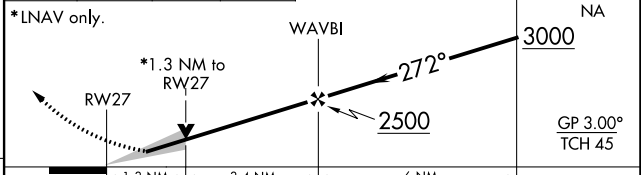
EC-3, 22 FEB 2024 to 21 MAR 2024

EC-3, 22 FEB 2024 to 21 MAR 2024

ELEV 913	TDZE 912
-----------------	-----------------



3000	JADIS	305° tr	SIMMN	VGSI and RNAV glidepath not coincident (VGSI Angle 3.00/TCH 24).
------	-------	---------	-------	--



CATEGORY	A	B	C	D
LPV DA	1162-¾		250 (300-¾)	
LNAV/VNAV DA	1317-1½		405 (500-1½)	
LNAV MDA	1360-1	448 (500-1)	1360-1¼ 448 (500-1¼)	1360-1½ 448 (500-1½)
CIRCLING	1360-1 447 (500-1)	1500-1 587 (600-1)	1600-2 687 (700-2)	1740-2¾ 827 (900-2¾)

REIL Rwy 9, 20 and 27 **0**
MIRL Rwy 2-20
MIRL Rwy 9-27 **0**

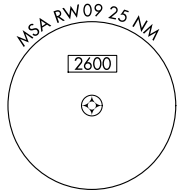
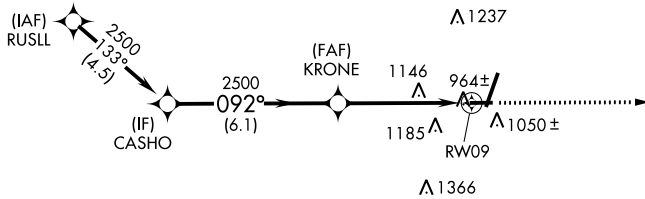
WAAS CH 82208 W09A	APP CRS 092°	Rwy Idg TDZE Apt Elev	4201 912 913
--	------------------------	-----------------------------	---

RNAV (GPS) RWY 9

DE KALB TAYLOR MUNI (DKB)

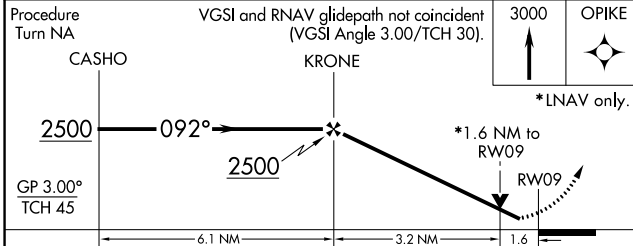
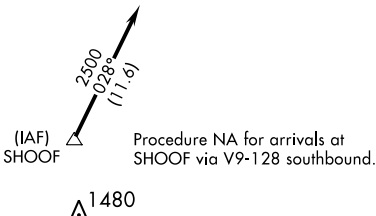
<p>▼ When local altimeter setting not received, use Aurora altimeter setting and increase all DA 61 feet and all MDA 80 feet; increase all LPV and LNAV/VNAV visibilities, LNAV Cats C/D visibility, and Circling Cats C/D visibility ¼ mile. Baro-VNAV NA when using Aurora altimeter setting. VDP NA when using Aurora altimeter setting. For uncompensated Baro-VNAV systems, LNAV/VNAV NA below -16°C (4°F) or above 47°C (116°F). DME/DME RNP-0.3 NA. Visibility reduction by helicopters NA.</p>		<p>MISSED APPROACH: Climb to 3000 direct OPIKE and hold.</p>
AWOS-3 119.075	CHICAGO APP CON 133.5 349.0	

Procedure NA for arrivals at RUSLL via V172 westbound.



EC-3, 22 FEB 2024 to 21 MAR 2024

EC-3, 22 FEB 2024 to 21 MAR 2024



ELEV 913	TDZE 912
----------	----------

REIL Rwy 9, 20 and 27 0
MIRL Rwy 2-20
MIRL Rwy 9-27 0

CATEGORY	A	B	C	D
LPV DA	1186-1 274 (300-1)			
LNAV/VNAV DA	1543-2¼ 631 (700-2¼)			
LNAV MDA	1460-1 548 (600-1)	1460-1½ 548 (600-1½)	1460-1¾ 548 (600-1¾)	1460-2 548 (600-2)
CIRCLING	1460-1 547 (600-1)	1500-1 587 (600-1)	1600-2 687 (700-2)	1740-2¾ 827 (900-2¾)