

WAAS CH 72723 W10A	APP CRS 103°	Rwy Idg TDZE 5402 547	Apt Elev 547
--	------------------------	---	------------------------

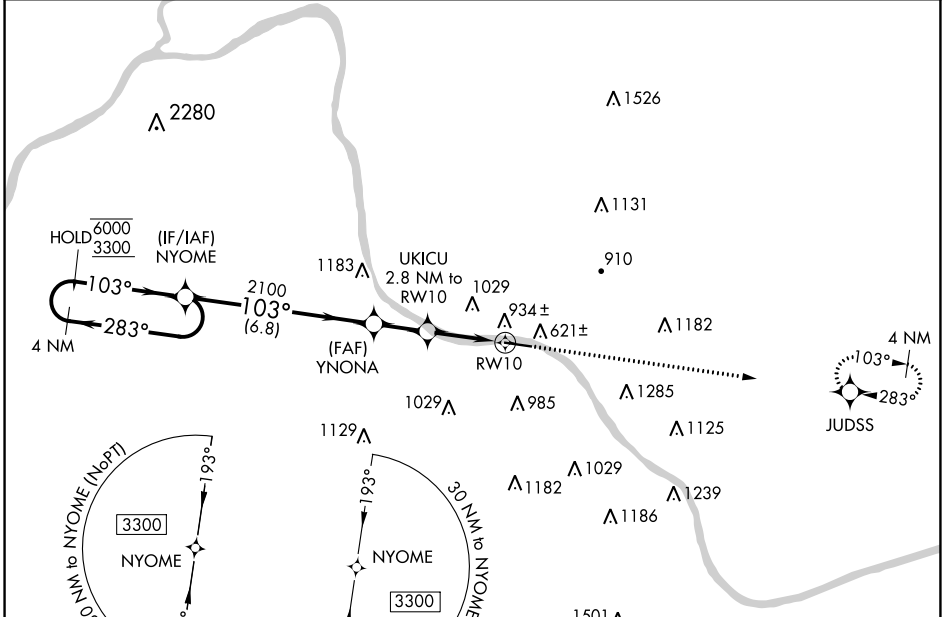
RNAV (GPS) RWY 10

ASHLAND RGNL (DWU)

RNP APCH.
 ▼ Rwy 10 helicopter visibility reduction below 3/4 SM NA. For uncompensated Baro-VNAV systems, LNAV/VNAV NA below -16°C or above 54°C.

MISSED APPROACH: Climb to 3300 direct JUDSS and hold, continue climb-in-hold to 3300.

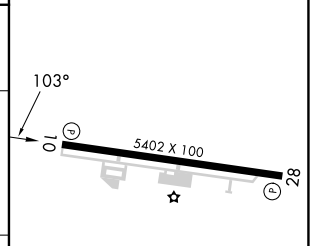
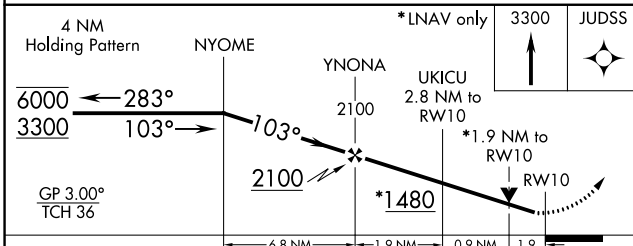
AWOS-3PT 132.425	HUNTINGTON APP CON 128.4 270.1	CLNC DEL 121.7	UNICOM 122.8 (CTAF)
----------------------------	--	--------------------------	-------------------------------



SE-1, 22 FEB 2024 to 21 MAR 2024

SE-1, 22 FEB 2024 to 21 MAR 2024

ELEV 547	TDZE 547
----------	----------



CATEGORY	A	B	C	D
LPV DA		799-1	252 (300-1)	
LNAV/VNAV DA		1095-1 5/8	548 (600-1 5/8)	
LNAV MDA	1200-1	653 (700-1)	1200-1 7/8	653 (700-1 5/8)
CIRCLING	1300-1 753 (800-1)	1380-1 1/4 833 (900-1 1/4)	1380-2 1/2 833 (900-2 1/2)	1420-2 3/4 873 (900-2 3/4)

MIRL Rwy 10-28
 REIL Rwy 10 and 28

WAAS CH 62923 W28A	APP CRS 283°	Rwy Idg TDZE Apt Elev	5402 546 546
--	------------------------	-----------------------------	---

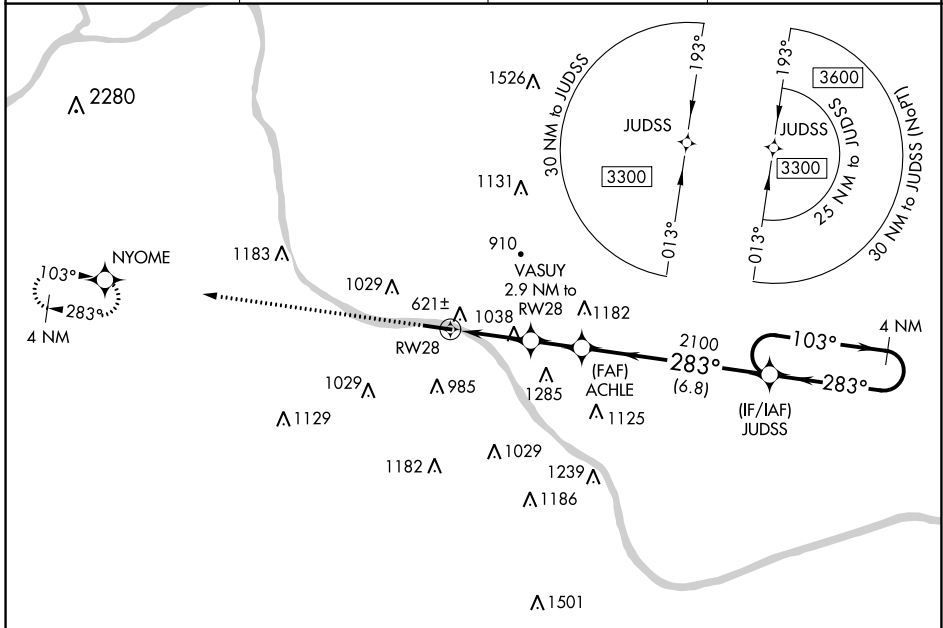
RNAV (GPS) RWY 28

ASHLAND RGNL (DWU)

⚠ DME/DME RNP-0.3 NA. When local altimeter setting not received; use Huntington altimeter setting, increase all MDA 80 feet and all Circling visibilities ¼ mile. VDP NA when using Huntington altimeter setting.

⚠ MISSED APPROACH: Climb to 3300 direct NYOME and hold.

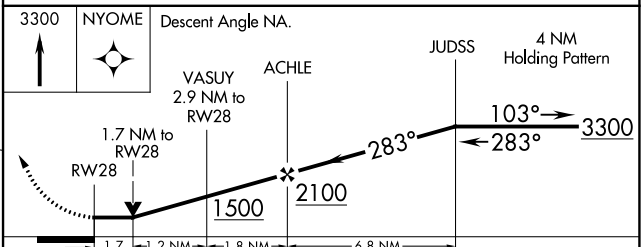
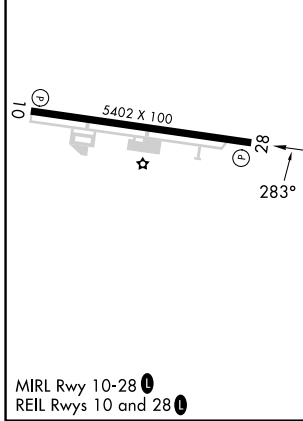
AWOS-3PT 132.425	HUNTINGTON APP CON 128.4 270.1	CLNC DEL 121.7	UNICOM 122.8 (CTAF) ☺
----------------------------	--	--------------------------	---------------------------------



SE-1, 22 FEB 2024 to 21 MAR 2024

SE-1, 22 FEB 2024 to 21 MAR 2024

ELEV 546	TDZE 546
----------	----------



CATEGORY	A	B	C	D
LP MDA	1340-1 794 (800-1)	1340-1¼ 794 (800-1¼)	1340-2½ 794 (800-2½)	
LNAV MDA	1340-1 794 (800-1)	1340-1¼ 794 (800-1¼)	1340-2½ 794 (800-2½)	
C CIRCLING	1340-1 794 (800-1)	1380-1¼ 834 (900-1¼)	1400-2½ 854 (900-2½)	1420-2¾ 874 (900-2¾)