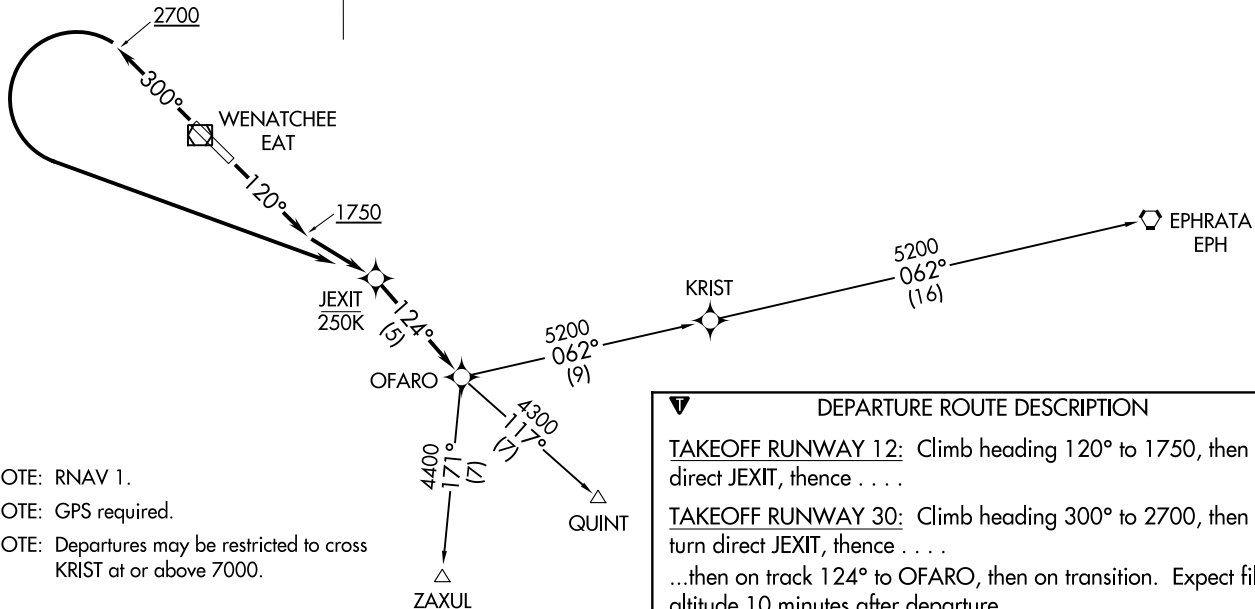


(NOTES CONTINUED ON FOLLOWING PAGE)

**TOP ALTITUDE:  
ASSIGNED BY ATC**

SEATTLE CENTER  
126.1  
UNICOM  
123.0  
ASOS  
119.925



NOTE: RNAV 1.

NOTE: GPS required.

NOTE: Departures may be restricted to cross KRIST at or above 7000.

**TAKEOFF MINIMUMS**

Rwy 12: Standard with minimum climb of 550' per NM to 3200.

Rwy 30: Standard with minimum climb of 500' per NM to 4000.

NOTE: Chart not to scale.

**DEPARTURE ROUTE DESCRIPTION**

TAKEOFF RUNWAY 12: Climb heading 120° to 1750, then direct JEXIT, thence . . .

TAKEOFF RUNWAY 30: Climb heading 300° to 2700, then left turn direct JEXIT, thence . . .

...then on track 124° to OFARO, then on transition. Expect filed altitude 10 minutes after departure.

EPHRATA TRANSITION (OFARO2.EPH)

QUINT TRANSITION (OFARO2.QUINT)

ZAXUL TRANSITION (OFARO2.ZAXUL)

OFARO TWO DEPARTURE (RNAV)  
(OFARO2.OFARO) 10NOV16

WENATCHEE, WASHINGTON  
PANGBORN MEML (EAT)

(OFARO2.OFARO) 21112  
OFARO TWO DEPARTURE (RNAV)  
AL-641 (FAA)

PANGBORN MEML (EAT)  
WENATCHEE, WASHINGTON

ZARLO TWO DEPARTURE (RNAV)  
(ZARLO2.ZARLO) 10NOV16

WENATCHEE, WASHINGTON  
PANGBORN MEML (EAT)

SEATTLE CENTER  
126.1  
UNICOM  
123.0  
ASOS  
119.925

**TOP ALTITUDE:  
ASSIGNED BY ATC.**

**DEPARTURE ROUTE DESCRIPTION**

**TAKEOFF RUNWAY 12:** Climb heading 120° to 3700, then left turn direct PREBE, thence . . .

**TAKEOFF RUNWAY 30:** Climb heading 300° to 1750, then direct PREBE, thence . . .

. . . on track 300° to cross UBIYO at or above 6700, then on depicted route to ZARLO, then on transition. Expect filed altitude 10 minutes after departure.

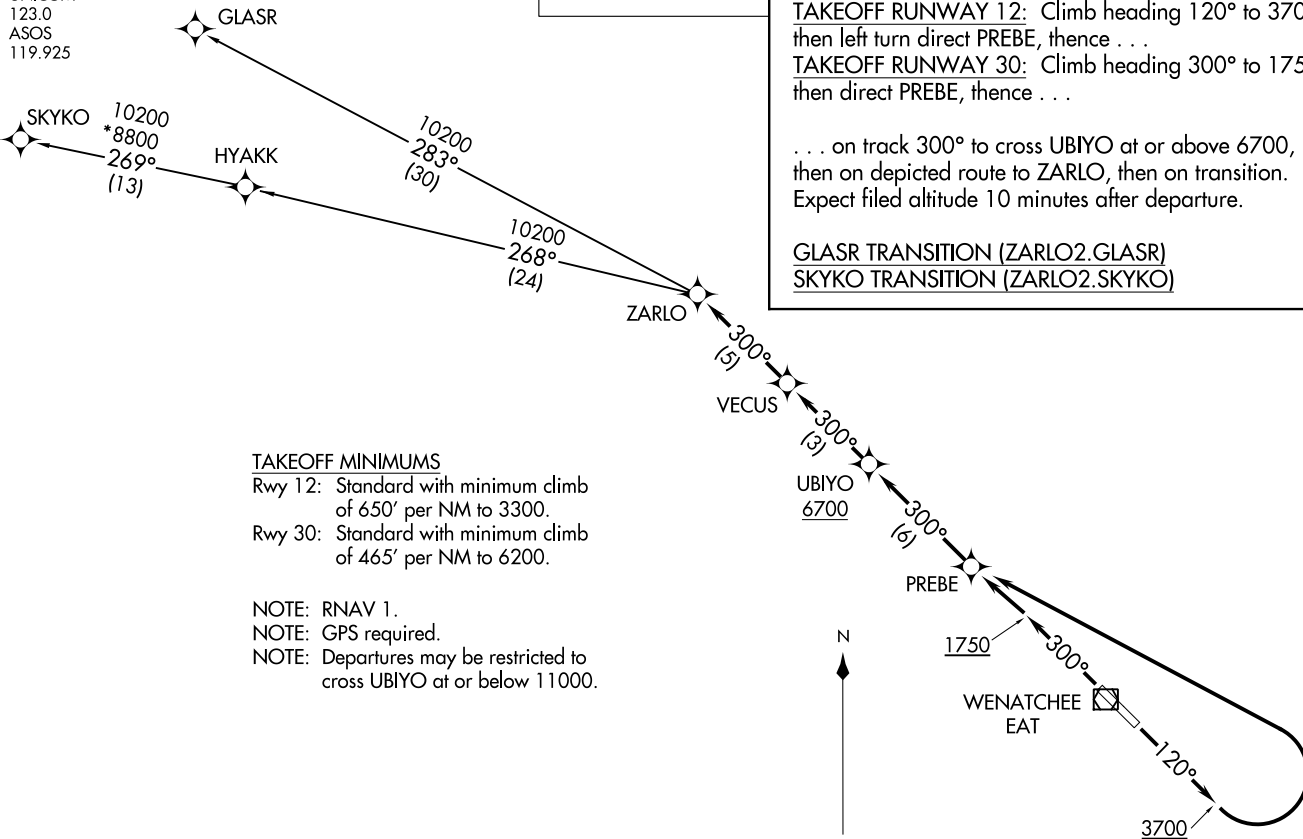
GLASR TRANSITION (ZARLO2.GLASR)  
SKYKO TRANSITION (ZARLO2.SKYKO)

**TAKEOFF MINIMUMS**

Rwy 12: Standard with minimum climb of 650' per NM to 3300.  
Rwy 30: Standard with minimum climb of 465' per NM to 6200.

NOTE: RNAV 1.  
NOTE: GPS required.  
NOTE: Departures may be restricted to cross UBIYO at or below 11000.

NOTE: Chart not to scale.



(ZARLO2.ZARLO) 21112  
ZARLO TWO DEPARTURE (RNAV) AL-641 (FAA)

PANGBORN MEML (EAT)  
WENATCHEE, WASHINGTON