

WAAS CH 93804 W18A	APP CRS 176°	Rwy Idg TDZE Apt Elev 5201 1277 1277
--	------------------------	--

RNAV (GPS) RWY 18

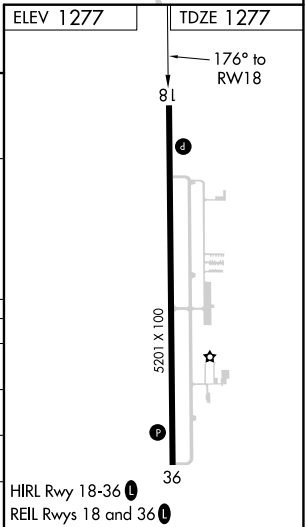
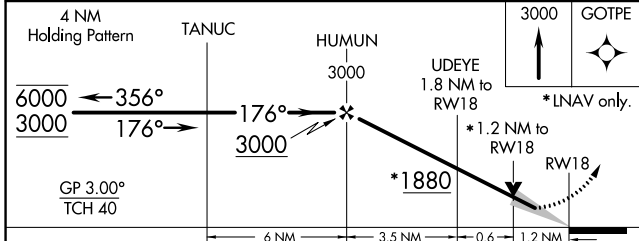
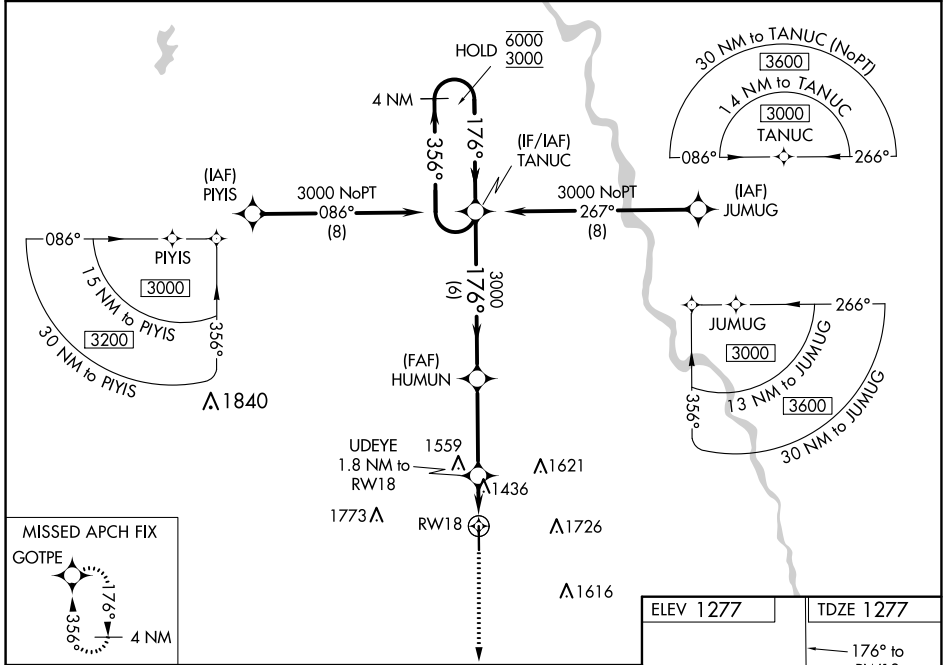
WELLINGTON MUNI (E/GT)

RNP APCH.

▼ Baro-VNAV and VDP NA when using Wichita Dwight D Eisenhower NII altimeter setting.
▲ NA For uncompensated Baro-VNAV systems, LNAV/VNAV NA below -17°C or above 54°C.
 When local altimeter setting not received, use Wichita Dwight D Eisenhower NII altimeter setting: increase LPV DA to 1531 feet; increase LNAV/VNAV DA to 1776 feet; increase all MDAs 60 feet and LNAV Cats C/D visibility 1/8 SM and Circling Cats C/D visibility 1/4 SM.

MISSED APPROACH:
Climb to 3000 direct
GOTPE and hold.

AWOS-3P 118.875	WICHITA APP CON 134.85	UNICOM 122.8 (CTAF)
---------------------------	----------------------------------	-------------------------------



CATEGORY	A	B	C	D
LPV DA	1477-1 200 (200-1)			
LNAV/VNAV DA	1722-1 3/8 445 (500-1 3/8)			
LNAV MDA	1700-1	423 (500-1)	1700-1 1/4	423 (500-1 1/4)
C CIRCLING	1760-1	483 (500-1)	2040-2 1/4 763 (800-2 1/4)	2140-2 3/4 863 (900-2 3/4)

NC-2, 27 JAN 2022 to 24 FEB 2022

NC-2, 27 JAN 2022 to 24 FEB 2022

WAAS CH 70504 W36A	APP CRS 356°	Rwy Idg 5201 TDZE 1277 Apt Elev 1277
--	------------------------	---

RNAV (GPS) RWY 36

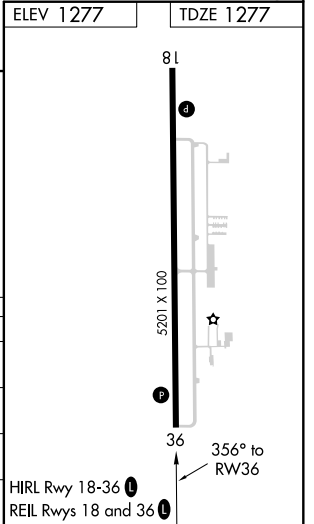
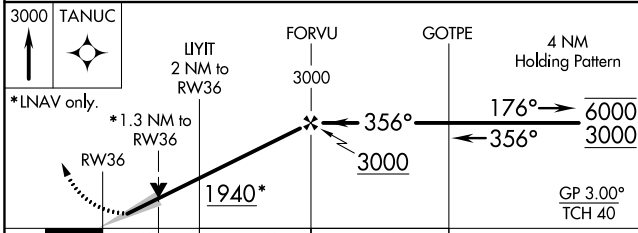
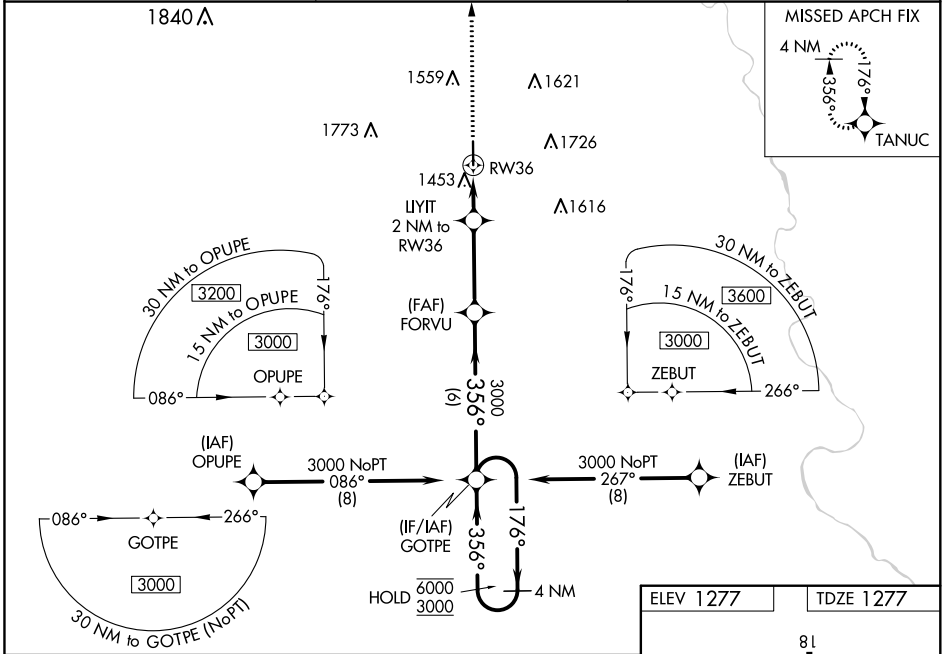
WELLINGTON MUNI (E/G/T)

RNP APCH.

NA Baro-VNAV and VDP NA when using Wichita Dwight D Eisenhower Ntl altimeter setting. For uncompensated Baro-VNAV systems, LNAV/VNAV NA below -17°C or above 54°C. When local altimeter setting not received, use Wichita Dwight D Eisenhower Ntl altimeter setting: increase LPV DA to 1581 feet; increase LNAV/VNAV DA to 1668 feet and all visibilities 1/8 SM; increase all MDA 60 feet and Circling Cat C/D visibility 1/4 SM.

MISSED APPROACH:
Climb to 3000 direct TANUC and hold.

AWOS-3P 118.875	WICHITA APP CON 134.85	UNICOM 122.8 (CTAF)
---------------------------	----------------------------------	-------------------------------



CATEGORY	A	B	C	D
LPV DA		1527-1	250 (300-1)	
LNAV/VNAV DA		1614-1	337 (400-1)	
LNAV MDA	1720-1	443 (500-1)	1720-1 3/8	443 (500-1 3/8)
C CIRCLING	1760-1	483 (500-1)	2040-2 1/4 763 (800-2 1/4)	2140-2 3/4 863 (900-2 3/4)

HIRL Rwy 18-36 **0**
REIL Rws 18 and 36 **0**

NC-2, 27 JAN 2022 to 24 FEB 2022

NC-2, 27 JAN 2022 to 24 FEB 2022

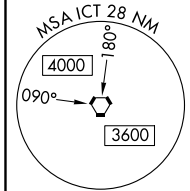
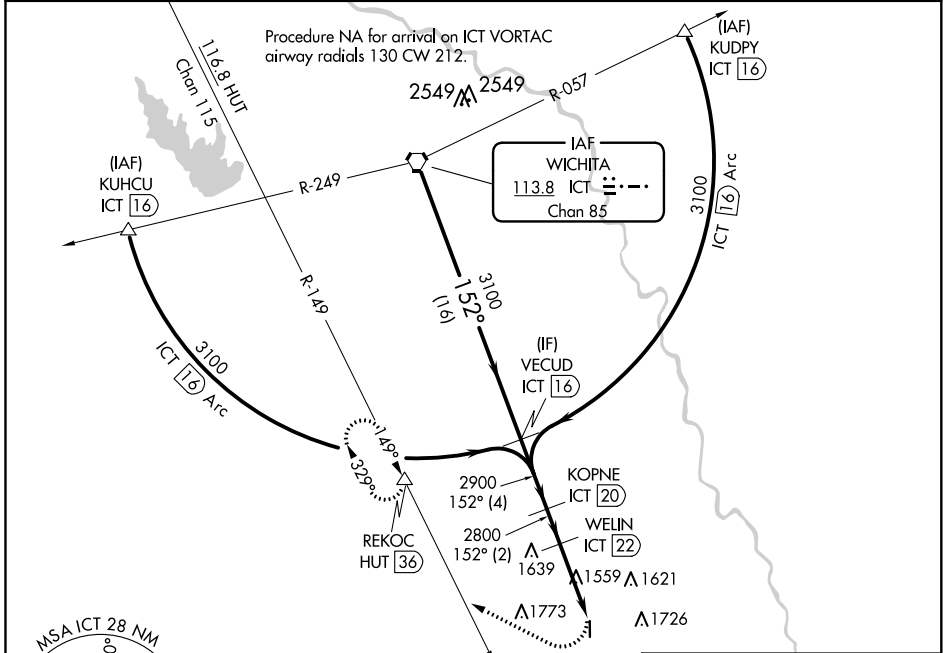
VORTAC ICT 113.8 Chan 85	APP CRS 152°	Rwy Idg TDZE Apt Elev	5201 1277 1277
--	------------------------	-----------------------------	---

VOR RWY 18

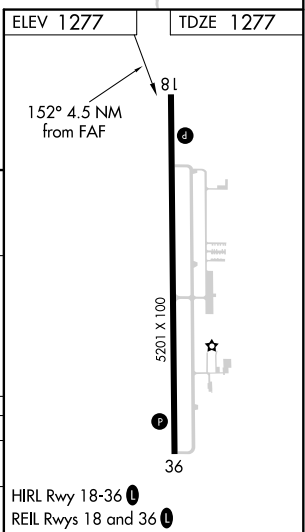
WELLINGTON MUNI (E/GT)

DME required.	MISSED APPROACH: Climbing right turn to 3300 on heading 290° and HUT VOR/DME R-149 to REKOC/HUT 36 DME and hold.
▼ When local altimeter setting not received, use Wichita ▲ NA Dwight D Eisenhower Nil altimeter setting.	

AWOS-3P 118.875	WICHITA APP CON 134.85	UNICOM 122.8 (CTAF)
---------------------------	----------------------------------	-------------------------------



CATEGORY	A		B		C		D	
	2100-1 823 (900-1)	2100-1¼ 823 (900-1¼)	2100-2½ 823 (900-2½)	2100-2½ 823 (900-2½)	2180-3 903 (1000-3)	HIRL Rwy 18-36 REIL Rwy 18 and 36		



NC-2, 27 JAN 2022 to 24 FEB 2022

NC-2, 27 JAN 2022 to 24 FEB 2022