

APP CRS	Rwy Idg	4005
110°	TDZE	382
	Apt Elev	393

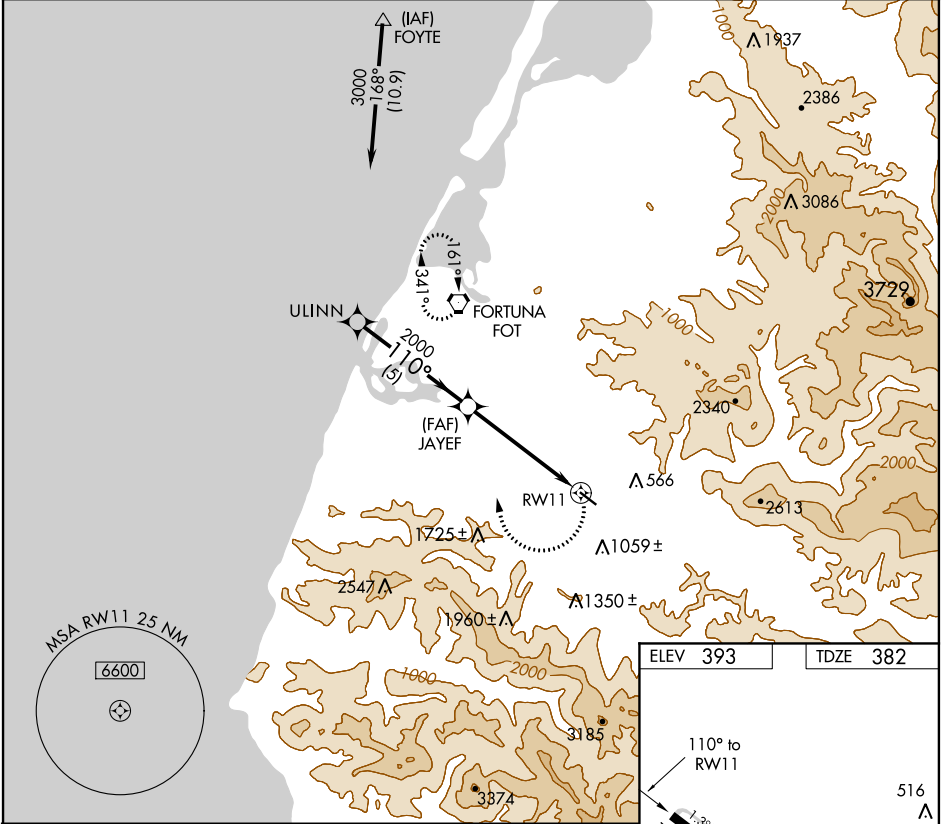
GPS RWY 11

ROHNERVILLE (FOT)

NA When local altimeter setting not received, use Arcata altimeter setting. Circling NA for Cat D north of Rwy 11-29.

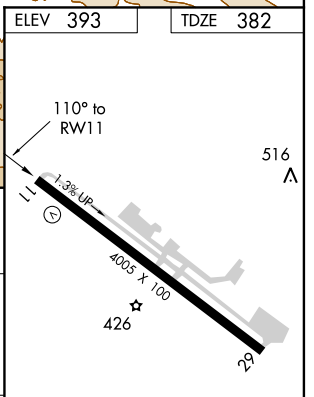
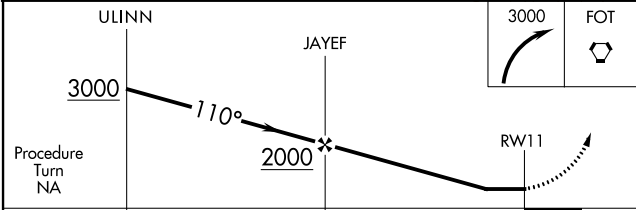
MISSED APPROACH: Climbing right turn to 3000 direct FOT VORTAC and hold.

AWOS-3 133.8	SEATTLE CENTER 124.85 306.3	CTAF 122.9
------------------------	---------------------------------------	----------------------



SW-2, 09 SEP 2021 to 07 OCT 2021

SW-2, 09 SEP 2021 to 07 OCT 2021



CATEGORY	A	B	C	D
S-11	1140-1 758 (800-1)	1160-1½ 778 (800-1½)	1200-2½ 818 (900-2½)	1560-3 1178 (1200-3)
CIRCLING	1140-1 747 (800-1)	1360-1½ 967 (1000-1½)	1720-3 1327 (1400-3)	1780-3 1387 (1400-3)

REIL Rwy 11 and 29
MRL Rwy 11-29

APP CRS	Rwy Idg	4005
276°	TDZE	392
	Apt Elev	393

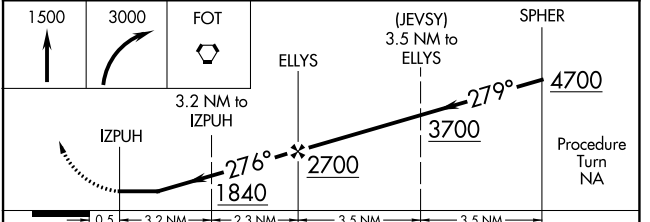
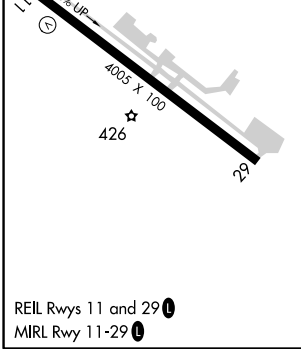
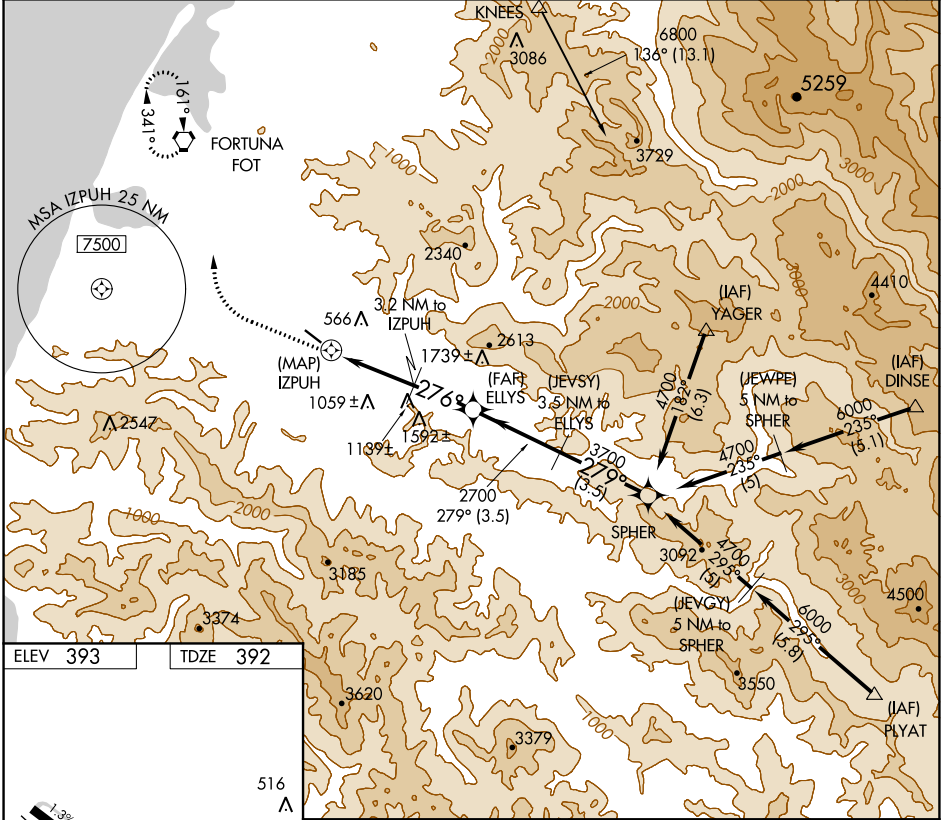
GPS RWY 29

ROHNERVILLE (FOT)

NA When local altimeter setting not received, use Arcata altimeter setting. Circling NA for Cat D north of Rwy 11-29.

MISSED APPROACH: Climb to 1500 then climbing right turn to 3000 direct FOT VORTAC and hold.

AWOS-3 133.8	SEATTLE CENTER 124.85 306.3	CTAF 122.9
------------------------	---------------------------------------	----------------------



CATEGORY	A	B	C	D
S-29	1160-1 768 (800-1)	1160-1¼ 768 (800-1¼)	1160-2¼ 768 (800-2¼)	1160-2½ 768 (800-2½)
CIRCLING	1160-1 767 (800-1)	1360-1½ 967 (1000-1½)	1720-3 1327 (1400-3)	1780-3 1387 (1400-3)

SW-2, 09 SEP 2021 to 07 OCT 2021

SW-2, 09 SEP 2021 to 07 OCT 2021