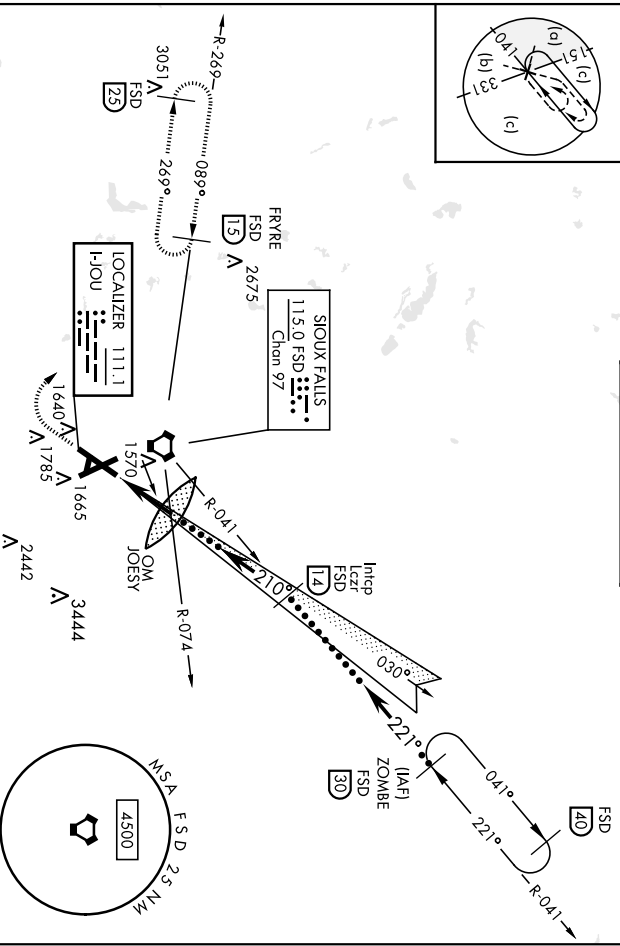
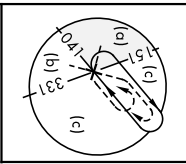


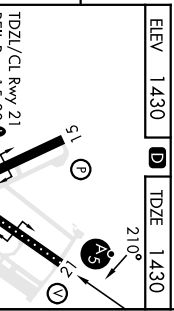
SIOUX FALLS, SOUTH DAKOTA

HILLS or LOC RWY 21

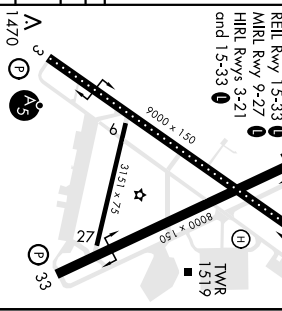
LOC I-JOU 111.1	APCH CRS 210°	Rev/ldg TDZE Aspl Elev 1430 1430	AL-396 [USAF]	MAISR MISSED APPROACH: Climb to 3400 then climbing right turn to 5000 on heading 300° and FSD R-269 to FRYRE	Joe FOSS FLD (KFSD)
ATIS 126.6	SIOUX FALLS APP CON 125.8 306.2	SIOUX FALLS TOWER ★ 118.3 (CTAF) 257.8	GND CON 121.9 348.6	ASR	



EMERG SAFE ALT 100 NM 4600



CATEGORY	C	D	E
S-ALS 21*	1630/18	200	(200-1/2)
S-LOC 21**	1920/50	490 (500-1)	1920/60
CIRCLING	2060-1¼	2200-2½	2300-3
	630 (700-1¼)	770 (800-2¼)	870 (900-3)



SIOUX FALLS, SOUTH DAKOTA
Amdt 6C 04NOV21

43° 35' N - 96° 45' W

HILLS or LOC RWY 21

SIOUX FALLS, SOUTH DAKOTA

HILLS or LOC RWY 3

LOC I-FSD	APCH CRS	Req'd Idg	8999
109.9	030°	TDZE	1424
		Appt Elev	1430

AL-396 [USAF]

JOE FOSS FLD. (KFSD)

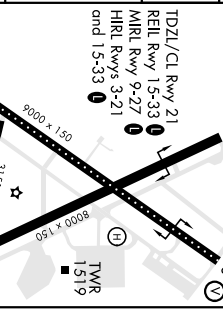
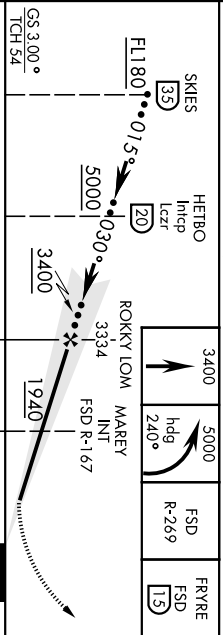
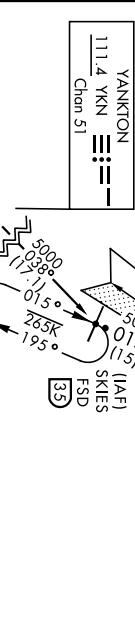
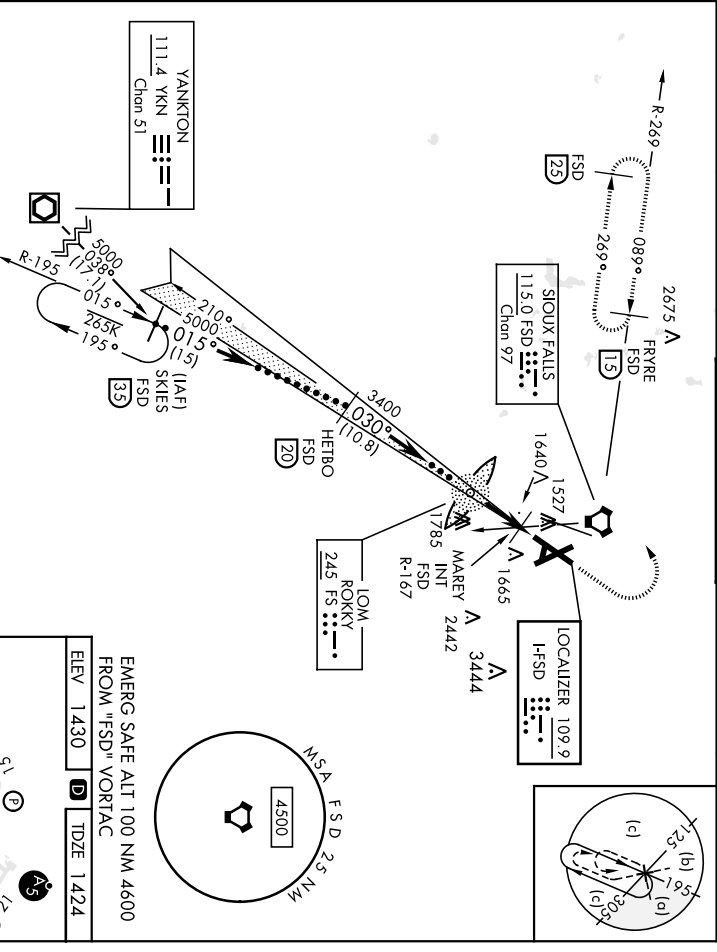
DME required:

▲ ** When ALS inop, increase CAT CDE RVR to 40', vis to 3/4 mile.
 *** When ALS inop, increase CAT CDE vis to 1 1/2 mile.
 **** When ALS inop, increase CAT CDE RVR to 55', vis to 1 mile.



MISSD APPROACH: Climb to 3400, then climbing left turn to 5000 on heading 240° and FSD VORTAC R-269 to FRVRE (FSD 15 DME) and hold.

ATIS	SIOUX FALLS APP CON	SIOUX FALLS TOWER *	GND CON	ASR
126.6	125.8 306.2	118.3(CITAF) 0 257.8	121.9 348.6	



GS 3300° TCH 54				
CATEGORY	C	D	E	
S-ILS 3 **	1674/24	250	(300-1/2)	
S-LOC 3 **	1940/55 516 (600-1)	1940/60 516	(600-1/8)	
◻ CIRCLING	2060-1 3/4 630 (700-1 3/4)	2200-2 1/2 770 (800-2 1/2)	2300-3 870 (900-3)	
S-LOC 3 ***	1780/30 356 (400-3/8)	1780/40 356	(400-3/4)	
◻ CIRCLING	2060-1 3/4 630 (700-1 3/4)	2200-2 1/2 770 (800-2 1/2)	2300-3 870 (900-3)	

FAF to MAP 5.7 NM					
Knots	120	140	160	180	200
Min:Sec	2:51	2:27	2:08	1:54	1:43

SIOUX FALLS, SOUTH DAKOTA
 Andrt 98 04NOV21
 JOE FOSS FLD. (KFSD)

HI-TACAN RWY 15

SIoux FALLS, SOUTH DAKOTA

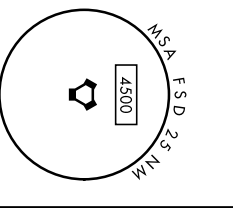
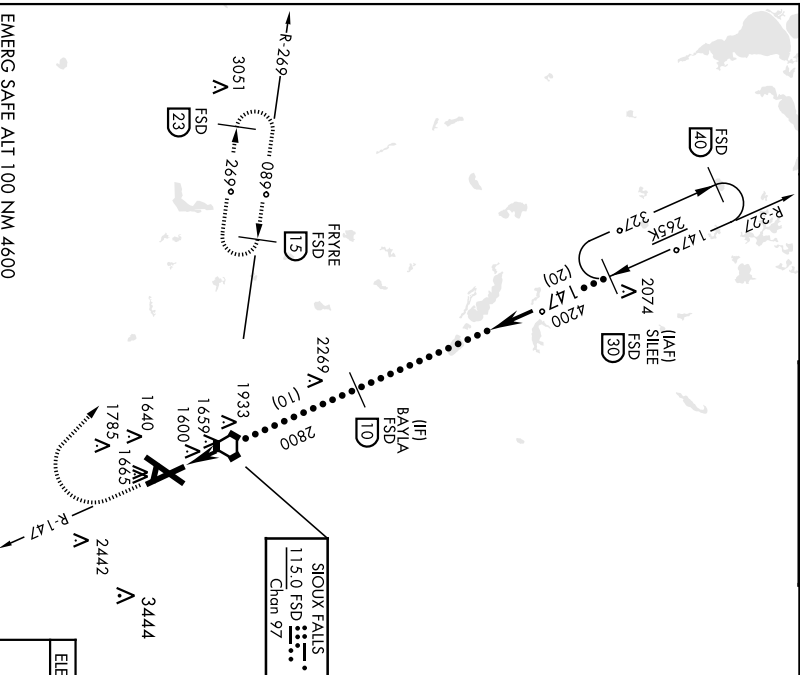
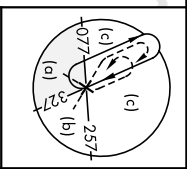
VORTAC FSD 115.0 Chon 97	APCH CRS 147°	Pub Idg TDZE Appr Elev 1429 1430
---------------------------------------	-------------------------	---------------------------------------------------------

AI-396 [USAF]

JOE FOSS FLD (KFSD)

MISSED APPROACH: Climb to 5000 then right turn on heading 320° and FSD R-269 to FRYRE 1.5 DME and hold.

ATIS 126.6	SIoux FALLS APP CON 125.8 306.2	SIoux FALLS TOWER ★ 118.3 (CTAF) 257.8	GND CON 121.9 348.6	ASR
----------------------	-------------------------------------------	--------------------------------------------------	-------------------------------	-----



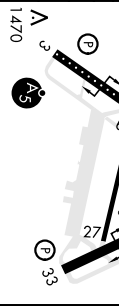
ELEV 1430	TDZE 1429
-----------	-----------

EMERG SAFE ALT 100 NM 4600

SILEE 30 BAYLA 10 VORTAC 23 3.37° TCH 46 4200 2800 3.7 3.7 NM	5000 hdg 320° FSD R-269 FRYRE FSD 15
---------------------------------------------------------------------------------------------------------------------	------------------------------------------------------------------

TDZ/CL Rwy 21
REIL Rwy 15-33
MIRL Rwy 9-27
HIREL Rwy 3-21
HIREL Rwy 15-33
TWR
1519

CATEGORY	C	D	E
5-15	1920-1¾	491	[500-1¾]
CIRCLING	2060-1¾ (700-1¾)	2200-2½ (800-2½)	2300-3 (900-3)
	630	770	870



SIoux FALLS, SOUTH DAKOTA
Andr 8C 04NOV21
43° 35'N-96° 45'W
JOE FOSS FLD (KFSD)

HI-TACAN RWY 15

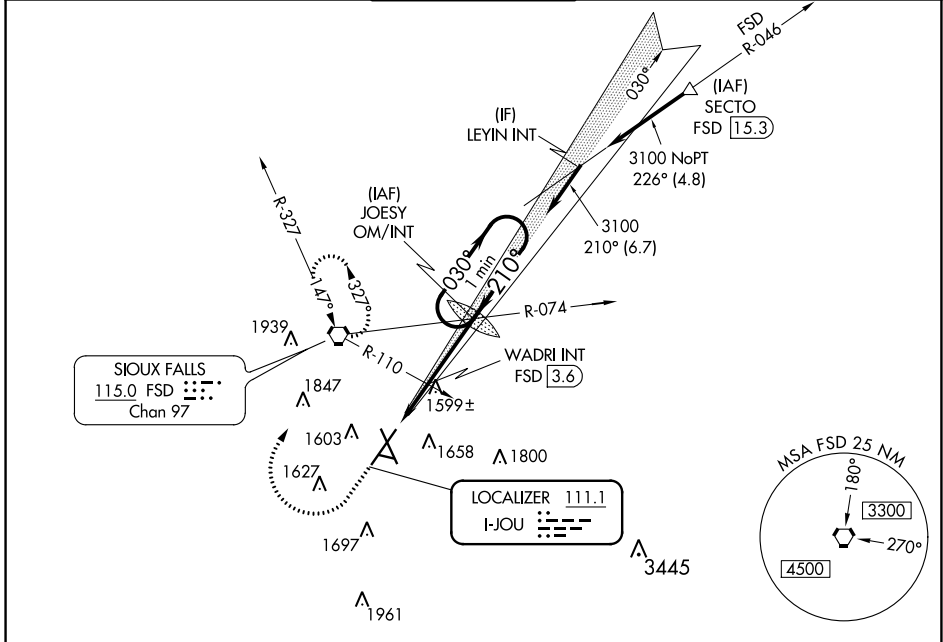
LOC I-JOU 111.1	APP CRS 210°	Rwy Idg TDZE Apt Elev	8999 1430 1430
---------------------------	------------------------	-----------------------------	-------------------------------------------

ILS or LOC RWY 21

JOE FOSS FLD (FSD)

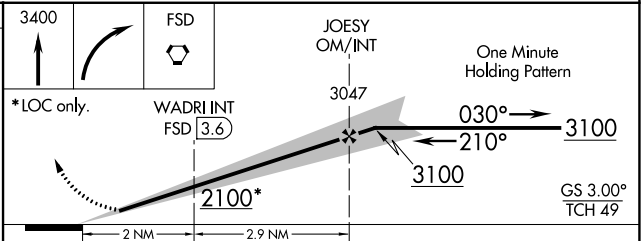
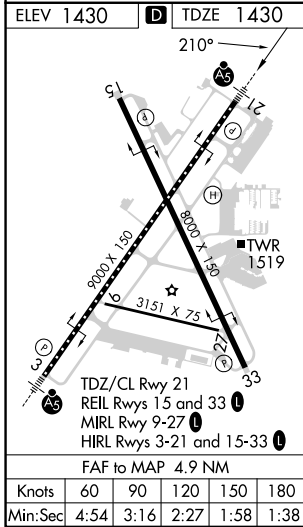
 	For inoperative MALSRR increase S-ILS all Cats visibility to 3/4 mile, increase S-LOC 21 Cat C/D visibility to 1 1/8 mile. When using WADRI FIX minimums, increase S-LOC 21 Cat C/D visibility to 1 mile.	 MISSED APPROACH: Climb to 3400 then right turn direct FSD VORTAC and hold.
	MALSRR	

ATIS 126.6	SIoux FALLS APP CON * 125.8 306.2	SIoux FALLS TOWER * 118.3 (CTAF) 0 257.8	GND CON 121.9 348.6	UNICOM 122.95
----------------------	---------------------------------------------	----------------------------------------------------	-------------------------------	-------------------------



NC-1, 22 FEB 2024 to 21 MAR 2024

NC-1, 22 FEB 2024 to 21 MAR 2024



CATEGORY	A	B	C	D
S-ILS 21	1630/18 200 (200-1/2)			
S-LOC 21	2100/24	670 (700-1/2)	2100-1 1/2	670 (700-1 1/2)
C CIRCLING	2100-1	670 (700-1)	2100-1 3/4	2200-2 1/2
WADRI FIX MINIMUMS				
S-LOC 21	1800/24	370 (400-1/2)	1800/35	370 (400-3/8)
C CIRCLING	1960-1	1980-1	2060-1 3/4	2200-2 1/2
	530 (600-1)	550 (600-1)	630 (700-1 3/4)	770 (800-2 1/2)

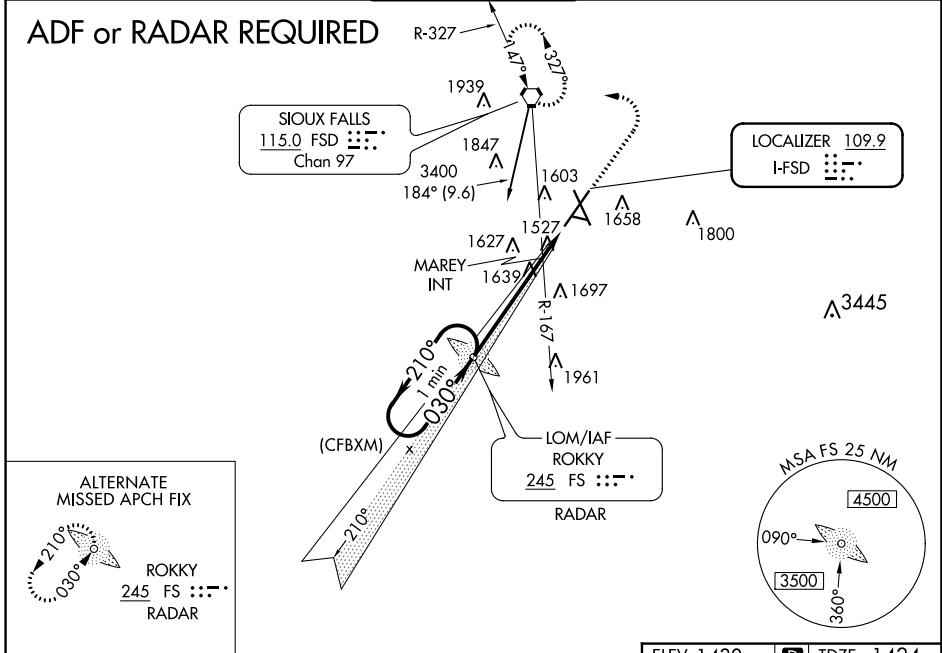
LOC I-FSD 109.9	APP CRS 030°	Rwy Idg TDZE Apt Elev	8999 1424 1430
---------------------------	------------------------	-----------------------------	-------------------------------------------

ILS or LOC RWY 3

JOE FOSS FLD (FSD)

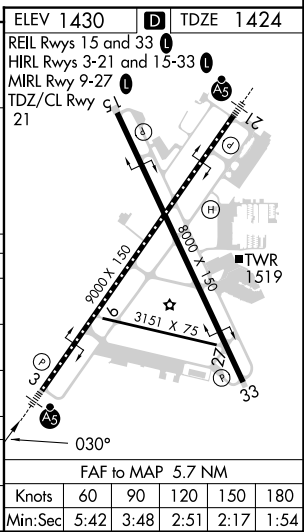
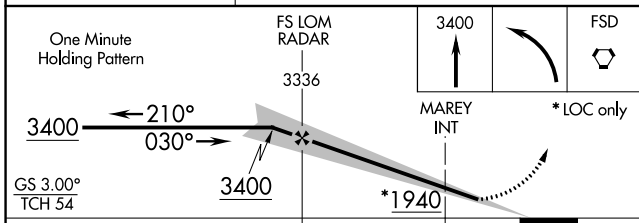
ASR -31°C	MALSR 	MISSED APPROACH: Climb to 3400 then left turn direct FSD VORTAC and hold.
--------------	-----------	---------------------------------------------------------------------------

ATIS 126.6	SIoux FALLS APP CON * 125.8 306.2	SIoux FALLS TOWER * 118.3 (CTAF) 0 257.8	GND CON 121.9 348.6	UNICOM 122.95
----------------------	---------------------------------------------	----------------------------------------------------	-------------------------------	-------------------------



ALTERNATE MISSED APCH FIX

ROKKY 245 FS ::::: RADAR



CATEGORY	A	B	C	D
S-ILS 3	1674/24 250 (300-½)			
S-LOC 3	1940/24	516 (600-½)	1940/55	516 (600-1)
CIRCLING	1960-1 530 (600-1)	1980-1 550 (600-1)	2060-1¾ 630 (700-1¾)	2200-2½ 770 (800-2½)
MAREY FIX MINIMUMS (DUAL VOR RECEIVERS REQUIRED)				
S-LOC 3	1800/24	376 (400-½)	1800/35	376 (400-5/8)
CIRCLING	1960-1 530 (600-1)	1980-1 550 (600-1)	2060-1¾ 630 (700-1¾)	2200-2½ 770 (800-2½)

NC-1, 22 FEB 2024 to 21 MAR 2024

NC-1, 22 FEB 2024 to 21 MAR 2024

WAAS CH 90235 W15A	APP CRS 150°	Rwy Idg TDZE Apt Elev	8000 1429 1430
----------------------------------------	------------------------	-----------------------------	-------------------------------------------

RNAV (GPS) RWY 15

JOE FOSS FLD (FSD)

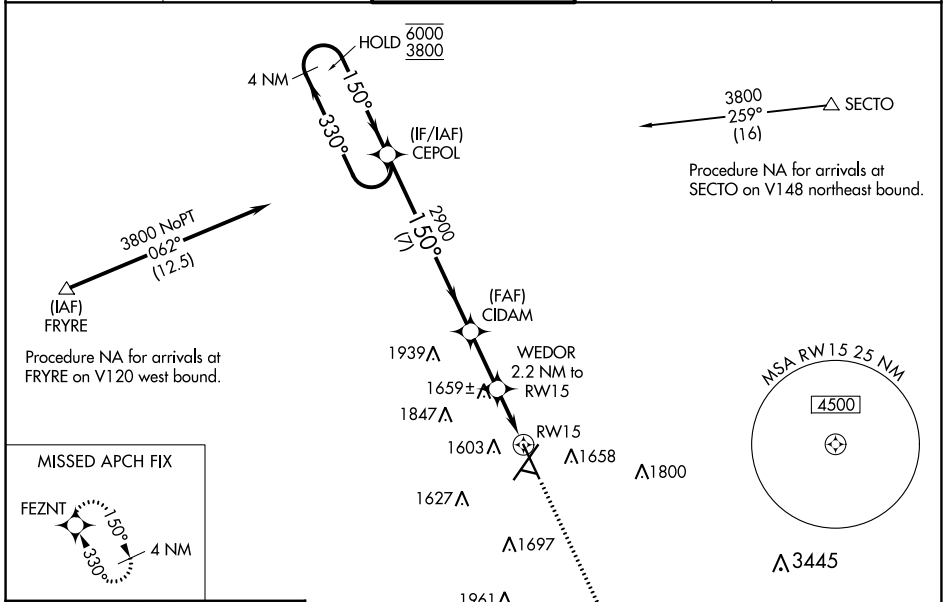
RNP APCH-GPS.

ASR -31°C

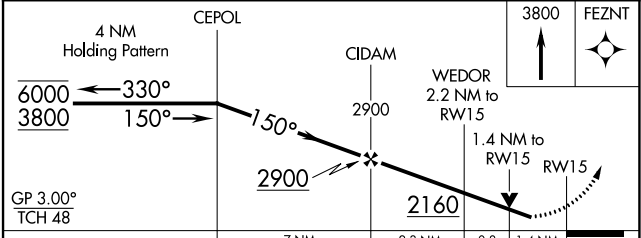
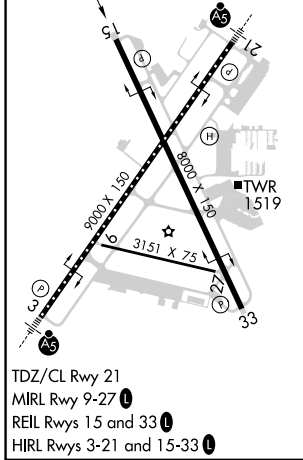
Rwy 15 helicopter visibility reduction below 3/4 SM NA. For uncompensated Baro-VNAV systems, LNAV/VNAV NA below -21°C or above 54°C.

MISSED APPROACH: Climb to 3800 direct FEZNT and hold.

ATIS 126.6	SIoux FALLS APP CON* 125.8 306.2	SIoux FALLS TOWER* 118.3 (CTAF) 257.8	GND CON 121.9 348.6	UNICOM 122.95
----------------------	--------------------------------------------	--------------------------------------------------------	-------------------------------	-------------------------



ELEV 1430	TDZE 1429
-----------	-----------



CATEGORY	A	B	C	D
LPV DA		1839-1 1/8	410 (500-1 1/8)	
LNAV/VNAV DA		1909-1 3/8	480 (500-1 3/8)	
LNAV MDA	1920-1	491 (500-1)	1920-1 3/8	491 (500-1 3/8)
C CIRCLING	1960-1 530 (600-1)	1980-1 550 (600-1)	2060-1 3/4 630 (700-1 3/4)	2200-2 1/2 770 (800-2 1/2)

NC-1, 22 FEB 2024 to 21 MAR 2024

NC-1, 22 FEB 2024 to 21 MAR 2024

WAAS CH 99323 W21A	APP CRS 210°	Rwy Idg TDZE Apt Elev	8999 1430 1430
----------------------------------------	------------------------	-----------------------------	-------------------------------------------

RNAV (GPS) RWY 21

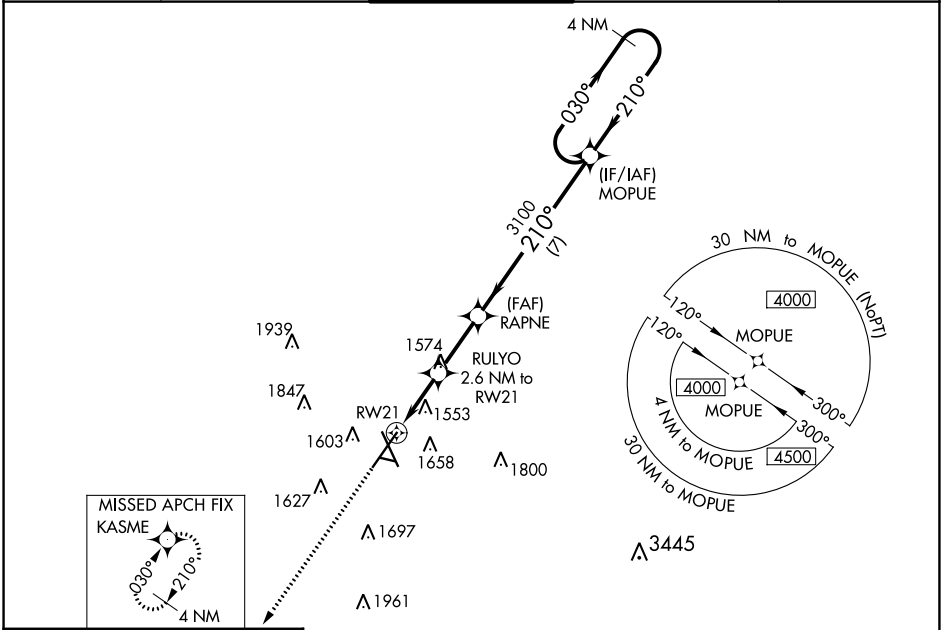
JOE FOSS FLD (FSD)

⚠ For uncompensated Baro-VNAV systems, LNAV/VNAV NA below -22°C (-7°F) or above 54°C (130°F). DME/DME RNP-0.3 NA. For Inop ALS, increase LPV all Cats visibility to RVR 4000 and LNAV/VNAV all Cats visibility to RVR 4500.

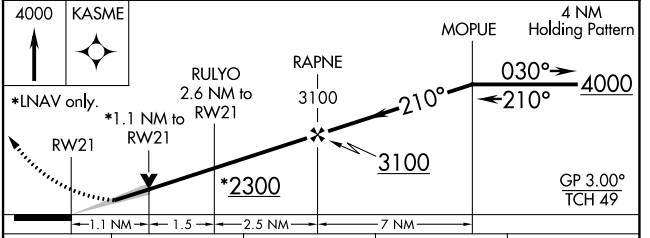
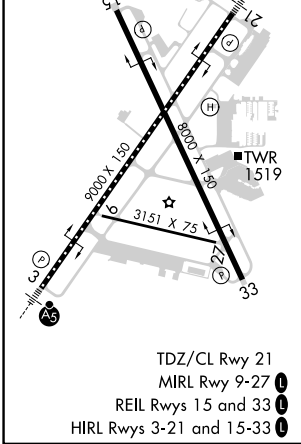
MALSRS MISSED APPROACH: Climb to 4000 direct KASME and hold.

ASR -31°C

ATIS 126.6	SIoux FALLS APP CON* 125.8 306.2	SIoux FALLS TOWER* 118.3 (CTAF) 257.8	GND CON 121.9 348.6	UNICOM 122.95
----------------------	--------------------------------------------	-------------------------------------------------	-------------------------------	-------------------------



ELEV 1430	D	TDZE 1430
-----------	----------	-----------



CATEGORY	A	B	C	D
LPV DA		1630/18	200 (300-½)	
LNAV/VNAV DA		1704/24	274 (300-½)	
LNAV MDA	1820/24	390 (400-½)	1820/35	390 (400-¾)
C CIRCLING	1960-1 530 (600-1)	1980-1 550 (600-1)	2060-1¾ 630 (700-1¾)	2200-2½ 770 (800-2½)

NC-1, 22 FEB 2024 to 21 MAR 2024

NC-1, 22 FEB 2024 to 21 MAR 2024

APP CRS 272°	Rwy Idg TDZE Apt Elev	3151 1424 1430
------------------------	-----------------------------	-------------------------------------------

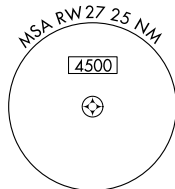
RNAV (GPS) RWY 27

JOE FOSS FLD (FSD)

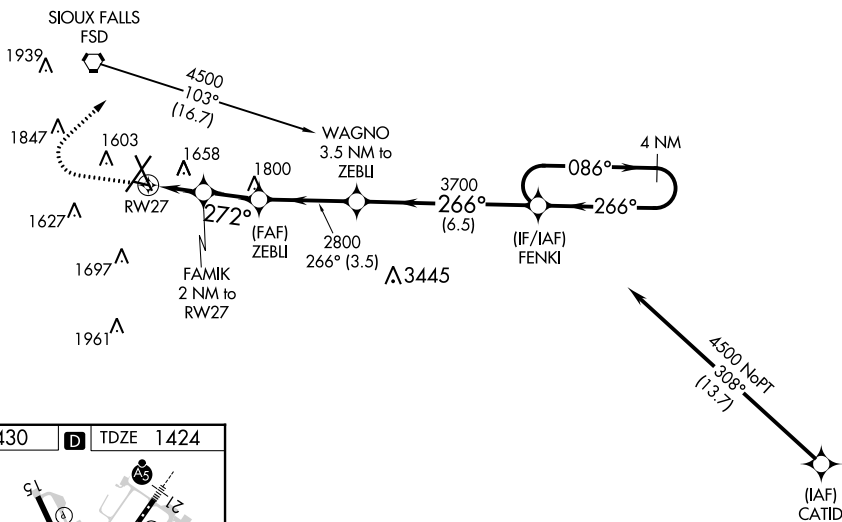
RNP APCH.
 ASR Rwy 27 helicopter visibility reduction below 3/4 SM NA.
 -31°C

MISSED APPROACH: Climb to 2500, then climbing right turn to 4000 direct MOPIUE WP and hold.

ATIS 126.6	SIoux FALLS APP CON* 125.8 306.2	SIoux FALLS TOWER* 118.3 (CTAF) 257.8	GND CON 121.9 348.6	UNICOM 122.95
----------------------	--------------------------------------------	-------------------------------------------------	-------------------------------	-------------------------



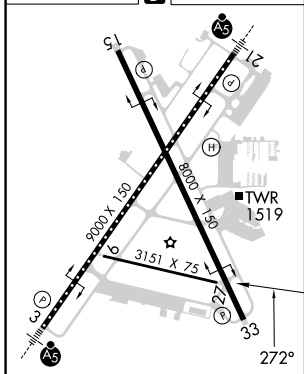
Procedure NA for arrivals on FSD VORTAC
 airway radials 046 CW 110.



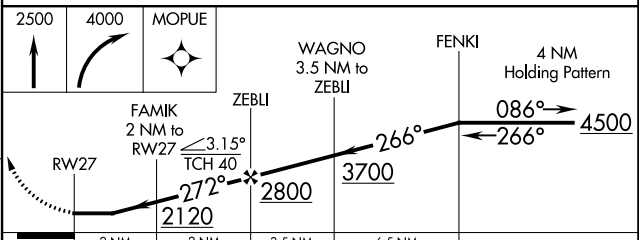
NC-1, 22 FEB 2024 to 21 MAR 2024

NC-1, 22 FEB 2024 to 21 MAR 2024

ELEV 1430	D	TDZE 1424
-----------	---	-----------



TDZ/CL Rwy 21
 MIRL Rwy 9-27
 REIL Rws 15 and 33
 HIRL Rws 3-21 and 15-33



CATEGORY	A	B	C	D
LNAV MDA	1960-1	536 (600-1)		NA
CIRCLING	1960-1 530 (600-1)	1980-1 550 (600-1)		NA

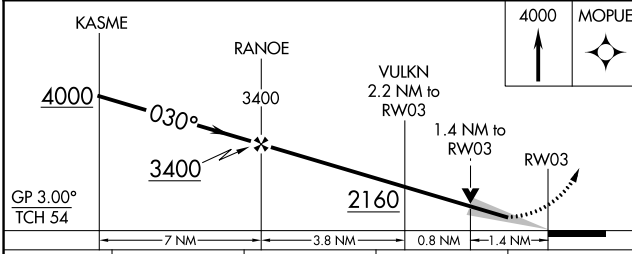
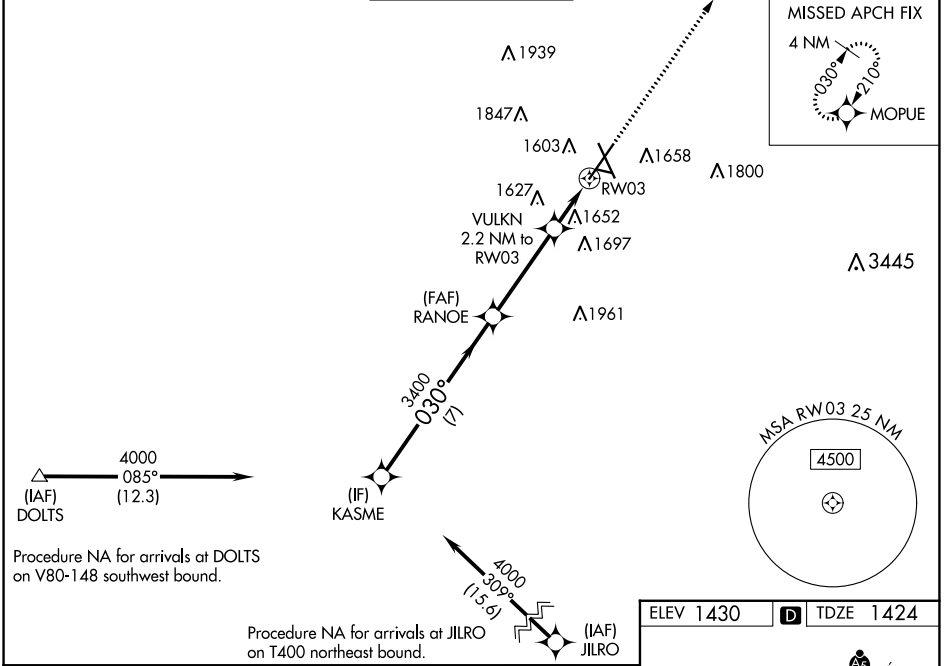
WAAS CH 97722	APP CRS 030°	Rwy Idg TDZE Apt Elev	8999 1424 1430
-------------------------	------------------------	-----------------------------	-------------------------------------------

RNAV (GPS) RWY 3

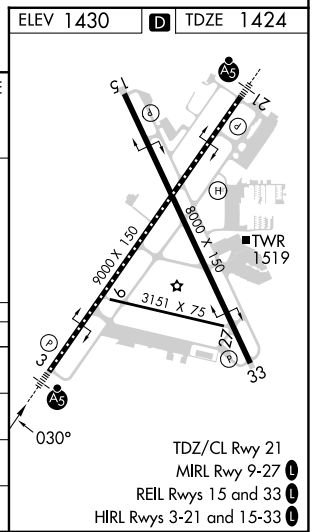
JOE FOSS FLD (FSD)

RNP APCH - GPS.		MALSR	MISSED APPROACH: Climb to 4000 direct MOEUE and hold.
⚠ For uncompensated Baro-VNAV systems, LNAV/VNAV NA below -20°C or above 54°C. For inop ALS, increase LNAV/VNAV all Cats visibility to RVR 4500 and LNAV Cats C/D visibility to 1 $\frac{1}{2}$ SM. ASR ❄ -31°C			

ATIS 126.6	SIoux FALLS APP CON* 125.8 306.2	SIoux FALLS TOWER* 118.3 (CTAF) 257.8	GND CON 121.9 348.6	UNICOM 122.95
----------------------	--------------------------------------------	-------------------------------------------------	-------------------------------	-------------------------



CATEGORY	A	B	C	D
LPV DA	1674/24		250 (300- $\frac{1}{2}$)	
LNAV/VNAV DA	1741/24		317 (400- $\frac{1}{2}$)	
LNAV MDA	1920/24	496 (500- $\frac{1}{2}$)	1920/50	496 (500-1)
CIRCLING	1980-1	550 (600-1)	2060-1 $\frac{3}{4}$ 630 (700-1 $\frac{3}{4}$)	2200-2 $\frac{1}{2}$ 770 (800-2 $\frac{1}{2}$)



NC-1, 22 FEB 2024 to 21 MAR 2024

NC-1, 22 FEB 2024 to 21 MAR 2024

TDZ/CL Rwy 21
MRL Rwy 9-27
REIL Rwy 15 and 33
HIRL Rwy 3-21 and 15-33

WAAS CH 40135 W33A	APP CRS 330°	Rwy Idg TDZE 1424 Apt Elev 1430	8000
----------------------------------------	------------------------	-----------------------------------------------------	-------------

RNAV (GPS) RWY 33

JOE FOSS FLD (F'SD)

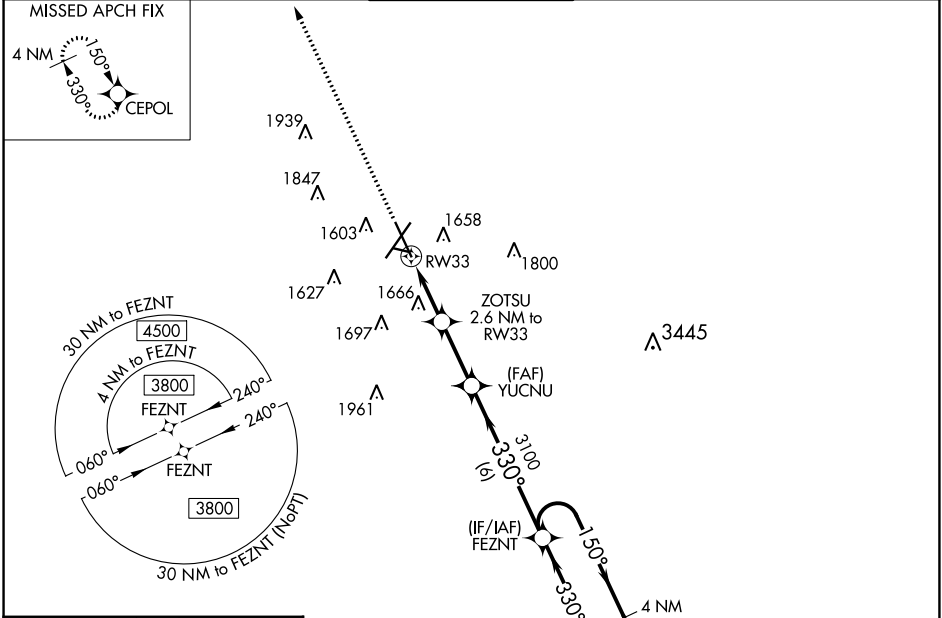
RNP APCH-GPS.

⚠ Rwy 33 helicopter visibility reduction below 3/4 SM NA. For uncompensated Baro-VNAV systems, procedure NA below -22°C or above 54°C.

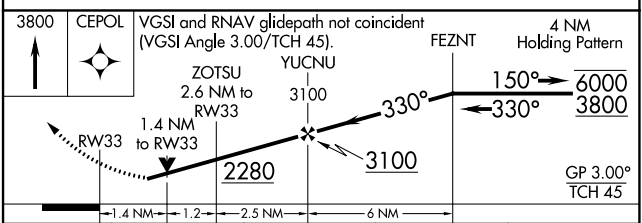
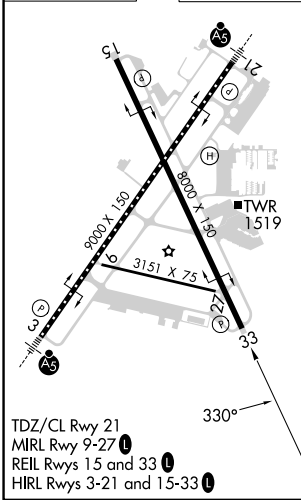
ASR -31°C

MISSED APPROACH:
Climb to 3800 direct
CEPOL and hold.

ATIS 126.6	SIoux FALLS APP CON* 125.8 306.2	SIoux FALLS TOWER* 118.3(CTAF) 257.8	GND CON 121.9 348.6	UNICOM 122.95
----------------------	--------------------------------------------	------------------------------------------------	-------------------------------	-------------------------



ELEV 1430	D	TDZE 1424
-----------	----------	-----------



CATEGORY	A	B	C	D
LPV DA		1729-7/8	305 (300-7/8)	
LNAV/VNAV DA		1974-1 1/8	550 (600-1 1/8)	
LNAV MDA	1920-1	496 (500-1)	1920-1 3/8	496 (500-1 3/8)
C CIRCLING	1960-1 530 (600-1)	1980-1 550 (600-1)	2060-1 3/4 630 (700-1 3/4)	2200-2 1/2 770 (800-2 1/2)

NC-1, 22 FEB 2024 to 21 MAR 2024

NC-1, 22 FEB 2024 to 21 MAR 2024

APP CRS 098°	Rwy Idg TDZE Apt Elev	3151 1424 1430
------------------------	-----------------------------	-------------------------------------------

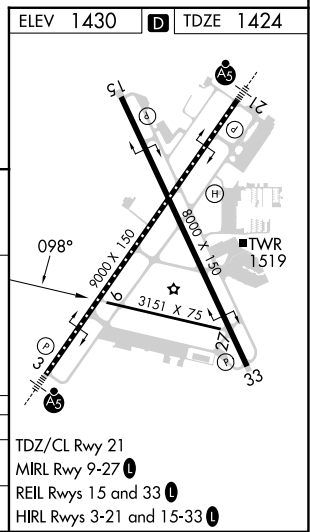
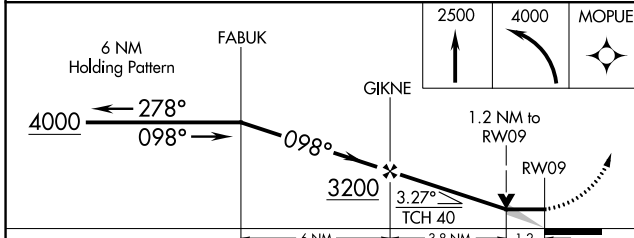
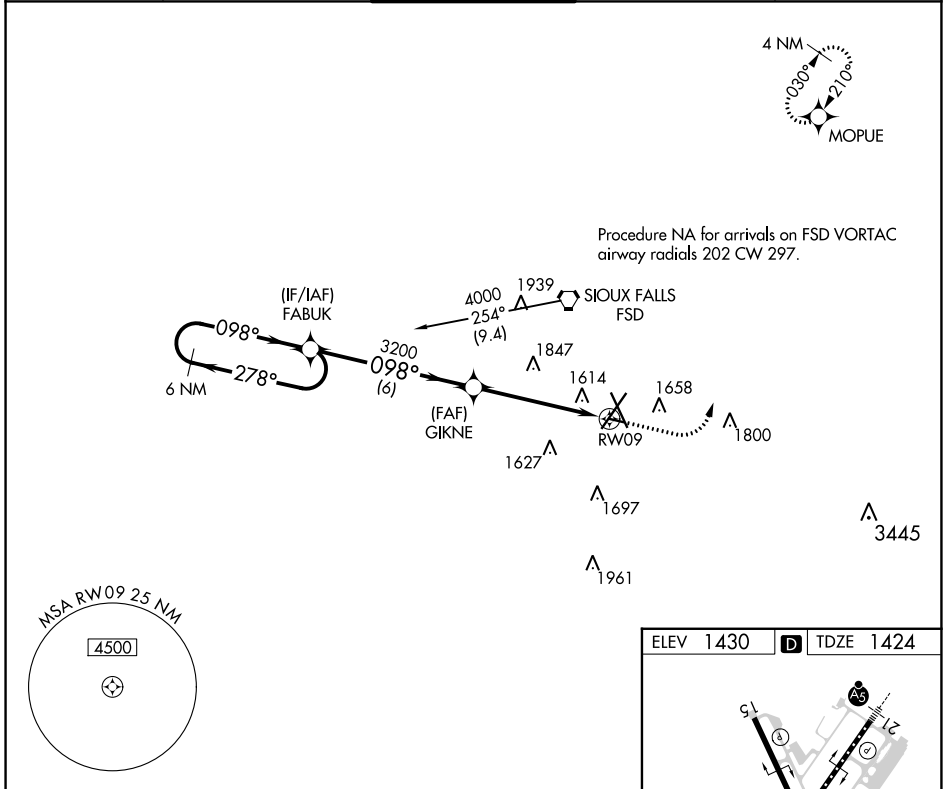
RNAV (GPS) RWY 9

JOE FOSS FLD (FSD)

RNP APCH.
 ASR Rwy 9 helicopter visibility reduction below 3/4 SM NA.
 -31°C

MISSED APPROACH: Climb to 2500 then climbing left turn to 4000 direct MOPUE WP and hold.

ATIS 126.6	SIoux FALLS APP CON* 125.8 306.2	SIoux FALLS TOWER* 118.3 (CTAF) 257.8	GND CON 121.9 348.6	UNICOM 122.95
----------------------	--------------------------------------------	-------------------------------------------------	-------------------------------	-------------------------



CATEGORY	A	B	C	D
LNAV MDA	1880-1	456 (500-1)		NA
CIRCLING	1960-1 530 (600-1)	1980-1 550 (600-1)		NA

TDZ/CL Rwy 21
 MRL Rwy 9-27
 REIL Rws 15 and 33
 HIRL Rws 3-21 and 15-33

NC-1, 22 FEB 2024 to 21 MAR 2024

NC-1, 22 FEB 2024 to 21 MAR 2024

VORTAC FSD 115.0 Chan 97	APP CRS 326°	Rwy Idg 8000 TDZE 1424 Apt Elev 1430
----------------------------------------------	------------------------	-----------------------------------------------------------------

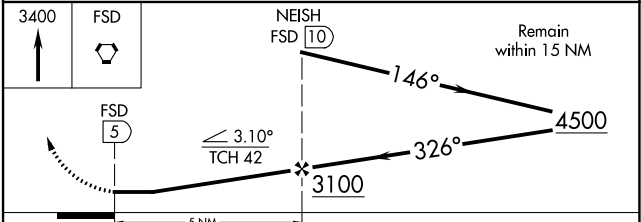
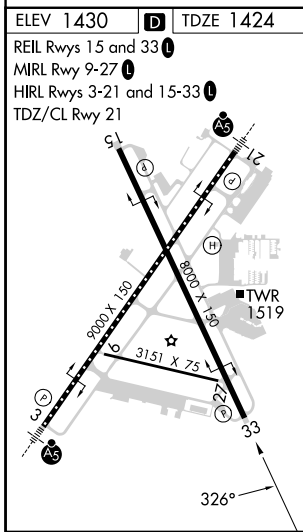
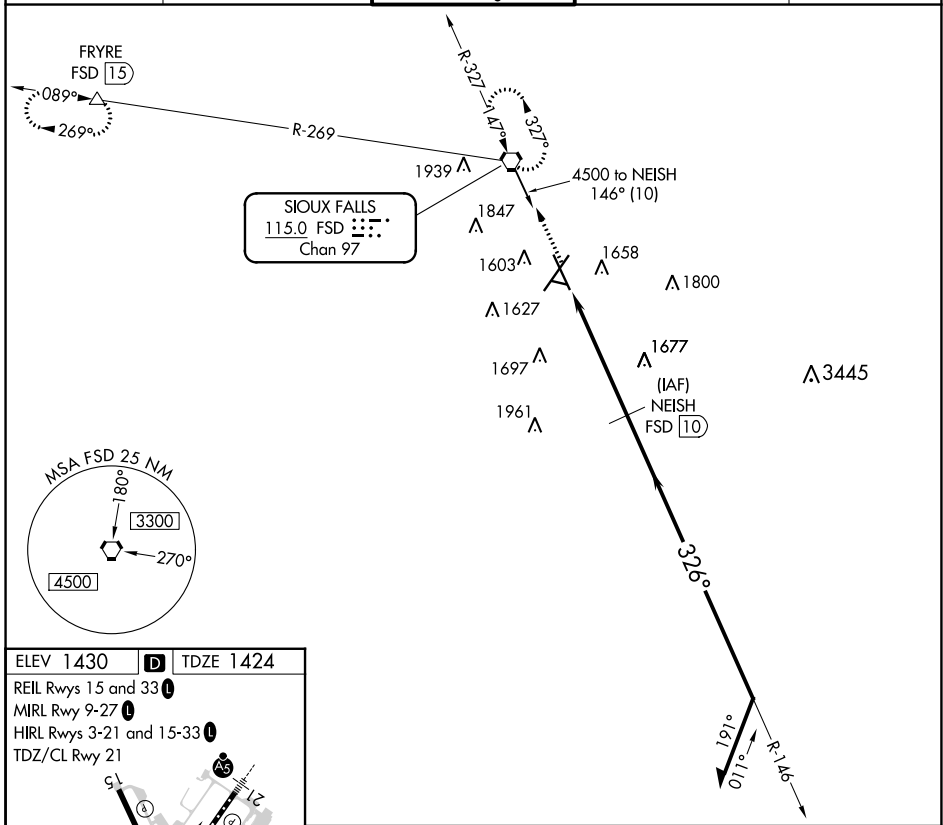
VOR/DME or TACAN RWY 33

JOE FOSS FLD (FSD)

ASR Rwy 33 helicopter visibility reduction below 3/4 SM NA.

MISSED APPROACH: Climb to 3400 direct FSD VORTAC and hold. (TACAN aircraft continue climb to 5000 via FSD R-269 to FRYRE 15 DME and hold west, right turns, 089° inbound.)

ATIS 126.6	SIoux FALLS APP CON* 125.8 306.2	SIoux FALLS TOWER* 118.3 (CTAF) 257.8	GND CON 121.9 348.6	UNICOM 122.95
----------------------	--------------------------------------------	-------------------------------------------------	-------------------------------	-------------------------



CATEGORY	A	B	C	D	E
S-33	1940-1	516 (600-1)	1940-1 3/8 516 (600-1 3/8)		
C CIRCLING	1960-1 530 (600-1)	1980-1 550 (600-1)	2060-1 3/4 630 (700-1 3/4)	2200-2 1/2 770 (800-2 1/2)	2300-3 870 (900-3)

NC-1, 22 FEB 2024 to 21 MAR 2024

NC-1, 22 FEB 2024 to 21 MAR 2024

VORTAC FSD 115.0 Chan 97	APP CRS 147°	Rwy Idg 8000 TDZE 1429 Apt Elev 1430
----------------------------------------------	------------------------	-----------------------------------------------------------------

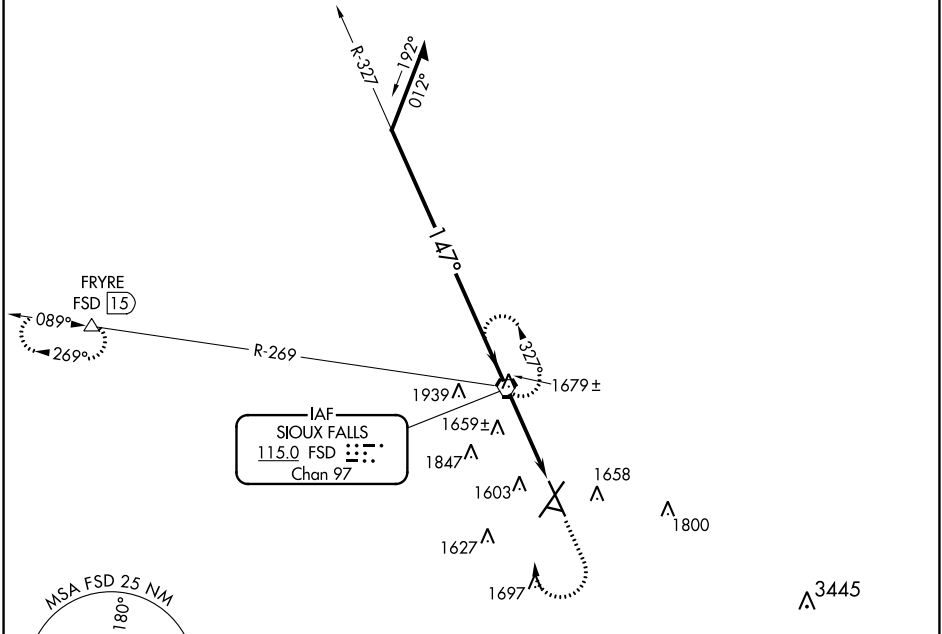
VOR or TACAN RWY 15

JOE FOSS FLD (FSD)

A Rwy 15 helicopter visibility reduction below 3/4 SM NA.
ASR
-31°C

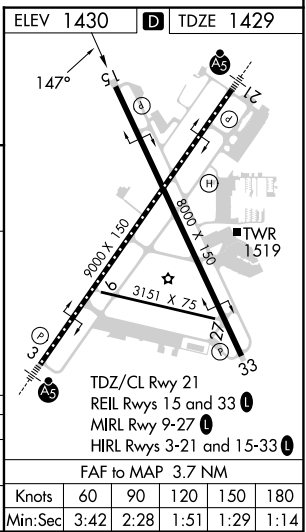
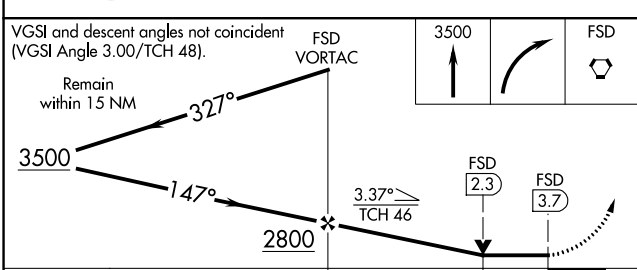
MISSED APPROACH: Climb to 3500 then right turn direct FSD VORTAC and hold. (TACAN aircraft continue climb to 5000 via FSD R-269 to FRYRE 15 DME and hold west, right turns, 089° inbound)

ATIS 126.6	SIoux FALLS APP CON* 125.8 306.2	SIoux FALLS TOWER* 118.3(CTAF) 257.8	GND CON 121.9 348.6	UNICOM 122.95
----------------------	--------------------------------------------	------------------------------------------------	-------------------------------	-------------------------



NC-1, 22 FEB 2024 to 21 MAR 2024

NC-1, 22 FEB 2024 to 21 MAR 2024



CATEGORY	A	B	C	D	E
S-15	1920-1	491 (500-1)	1920-1 3/8	491 (500-1 3/8)	
CIRCLING	1960-1 530 (600-1)	1980-1 550 (600-1)	2060-1 3/4 630 (700-1 3/4)	2200-2 1/2 770 (800-2 1/2)	2300-3 870 (900-3)

Knots	60	90	120	150	180
Min:Sec	3:42	2:28	1:51	1:29	1:14