


LOC I-FQR 111.1	APP CRS 017°	Rwy ldg 5000
		TDZE 361
		Apt Elev 365

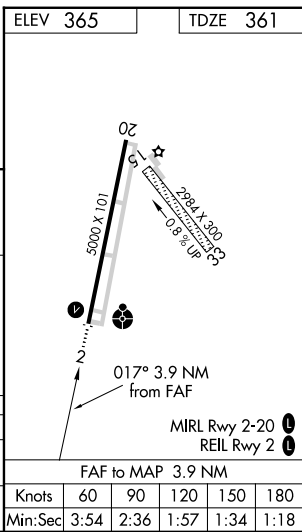
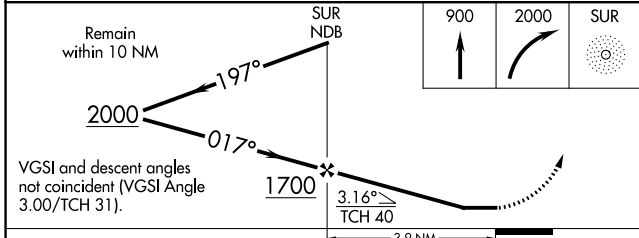
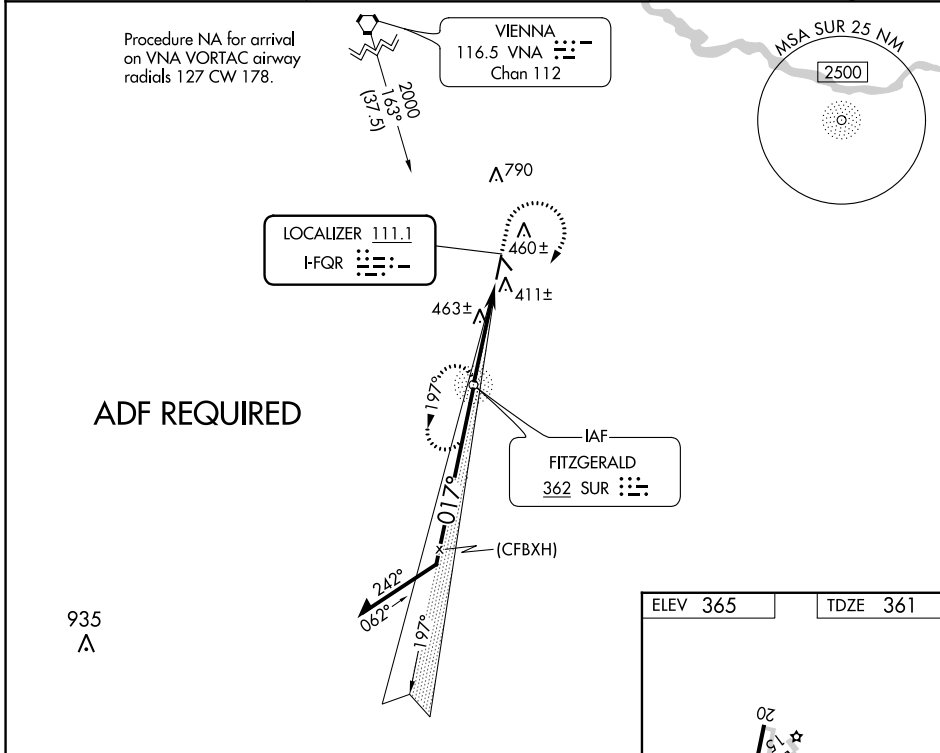
LOC RWY 2
FITZGERALD MUNI (FZG)

⚠ Circling NA to Rwy 15 and 33. ADF required. When local altimeter setting not received, use Tifton altimeter setting and increase all MDA 60 feet, increase S-LOC 2 Cat C and D visibility $\frac{1}{8}$ SM and Circling Cat C and D visibility $\frac{1}{4}$ SM.

ODALS 

MISSED APPROACH: Climb to 900 then climbing right turn to 2000 direct SUR NDB and hold.

AWOS-3 118.625	JACKSONVILLE CENTER 127.575 269.025	UNICOM 123.0 (CTAF) 
--------------------------	---	---



CATEGORY	A	B	C	D
S-LOC 2	720- $\frac{3}{4}$	359 (400- $\frac{3}{4}$)	720- $\frac{7}{8}$	359 (400- $\frac{7}{8}$)
C CIRCLING	880-1	515 (600-1)	1160-2 $\frac{1}{4}$ 795 (800-2 $\frac{1}{4}$)	1160-2 $\frac{1}{2}$ 795 (800-2 $\frac{1}{2}$)

SE-4, 22 FEB 2024 to 21 MAR 2024

SE-4, 22 FEB 2024 to 21 MAR 2024

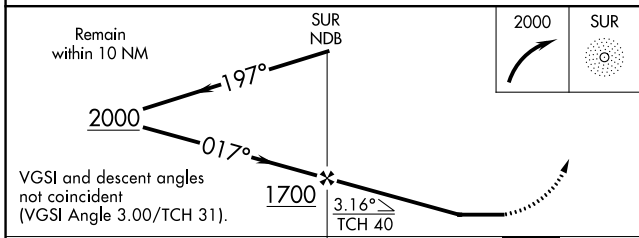
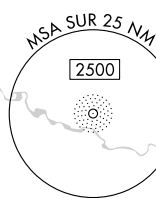
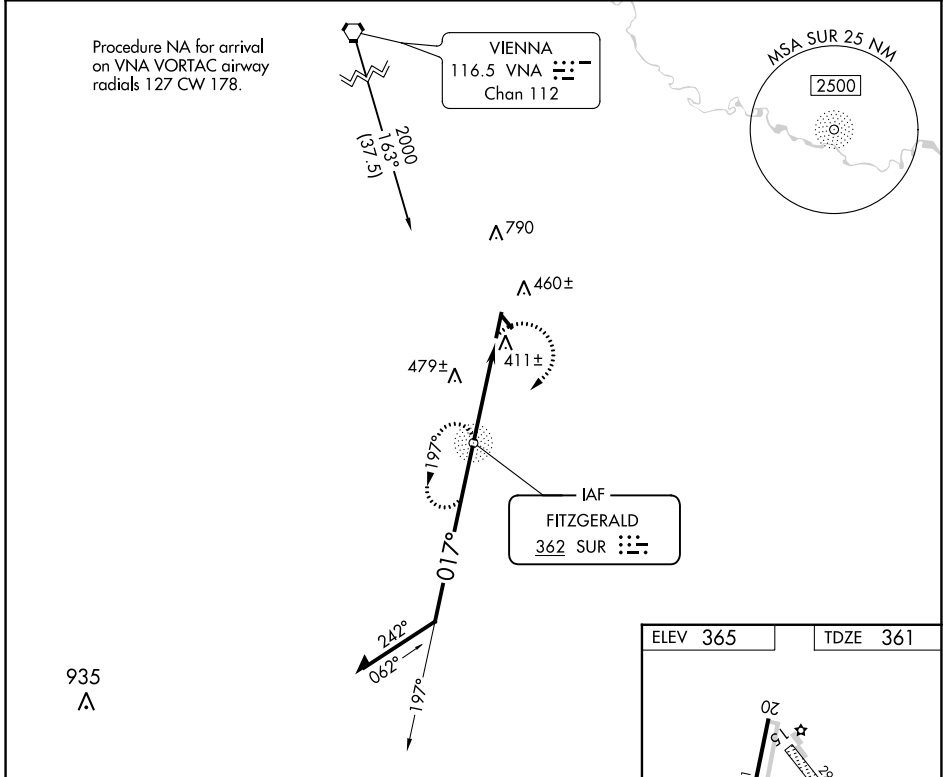
NDB SUR 362	APP CRS 017°	Rwy Idg TDZE Apt Elev	5000 361 365
-----------------------	------------------------	-----------------------------	---

NDB RWY 2

FITZGERALD MUNI (FZG)

<p>⚠ Circling NA to Rwy 15 and 33. When local altimeter setting not received, use Tifton altimeter setting and increase all MDA 60 feet, increase S-2 Cat C and D visibility ¼ SM and Circling Cat C and D visibility ¼ SM.</p>	<p>ODALS</p>	<p>MISSED APPROACH: Climbing right turn to 2000 direct SUR NDB and hold, continue climb-in-hold to 2000.</p>
--	--------------	--

AWOS-3 118.625	JACKSONVILLE CENTER 127.575 269.025	UNICOM 123.0 (CTAF)
--------------------------	---	-------------------------------



ELEV 365	TDZE 361
----------	----------

2000

101

20

2924 x 300

08° 08' 00"

017° 3.9 NM from FAF

MRL Rwy 2-20

REIL Rwy 2

FAF to MAP 3.9 NM

Knots	60	90	120	150	180
Min:Sec	3:54	2:36	1:57	1:34	1:18

CATEGORY	A	B	C	D
S-2	780-¾ 419 (500-¾)		780-1 419 (500-1)	
C CIRCLING	880-1 515 (600-1)		1160-2¼ 795 (800-2¼)	1160-2½ 795 (800-2½)

SE-4, 22 FEB 2024 to 21 MAR 2024

SE-4, 22 FEB 2024 to 21 MAR 2024

WAAS CH 72924 W02A	APP CRS 017°	Rwy Idg 5000 TDZE 361 Apt Elev 365
--	------------------------	---

RNAV (GPS) RWY 2

FITZGERALD MUNI (FZG)

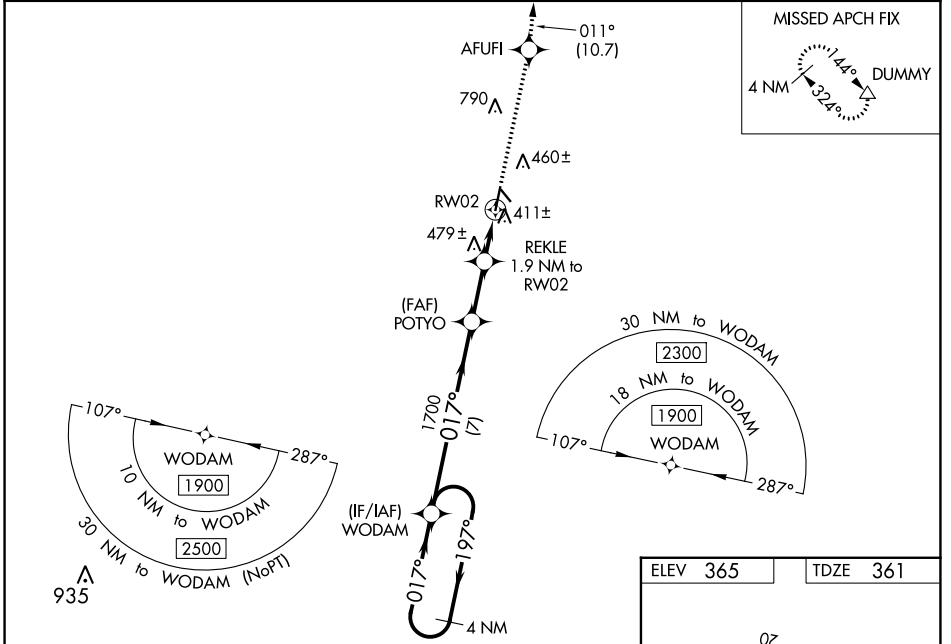
RNP APCH - GPS.

▼ Circling NA to Rwy 15 and 33. Baro-VNAV and VDP NA when using Tifton altimeter setting.
▲ For uncompensated Baro-VNAV systems, LNAV/VNAV NA below -15°C or above 54°C.
 When local altimeter setting not received, use Tifton altimeter setting: increase LPV DA to 656 feet and LNAV/VNAV DA to 691 feet; increase LNAV/VNAV all Cats visibility 1/8 SM, increase all MDAs 60 feet and LNAV visibility Cats C/D 1/8 SM, and Circling Cats C/D visibility 1/4 SM. Inop table does not apply to LPV all Cats and LNAV Cats C/D. For inop ALS increase LNAV/VNAV Cats A/B visibility to 3/8 SM. For inop ALS when using Tifton altimeter setting increase LPV Cats A/B visibility to 3/8 SM and LNAV/VNAV Cats A/B visibility to 1 SM.



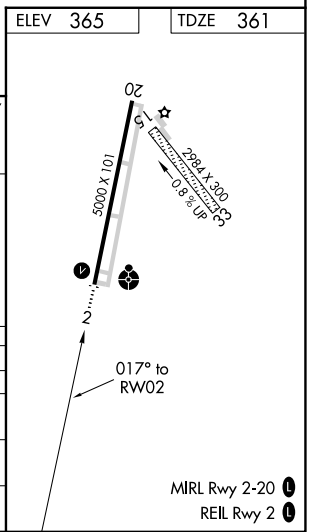
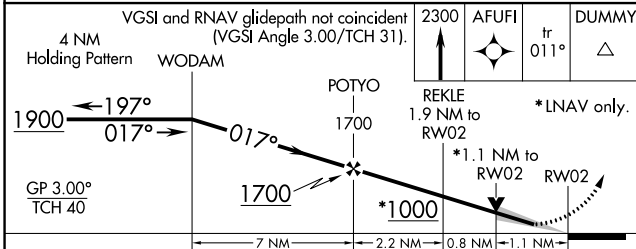
MISSED APPROACH:
 Climb to 2300 direct AFUFI and on track 011° to DUMMY and hold.

AWOS-3 118.625	JACKSONVILLE CENTER 127.575 269.025	UNICOM 123.0 (CTAF)
--------------------------	---	-------------------------------



SE-4, 22 FEB 2024 to 21 MAR 2024

SE-4, 22 FEB 2024 to 21 MAR 2024



CATEGORY	A	B	C	D
LPV DA	611-3/4 250 (300-3/4)			
LNAV/VNAV DA	646-3/4 285 (300-3/4)			
LNAV MDA	740-3/4 379 (400-3/4)		740-1 379 (400-1)	
CIRCLING	880-1	515 (600-1)	1160-2 1/4 795 (800-2 1/4)	1160-2 1/2 795 (800-2 1/2)