

LOC/DME I-JUH <b>109.35</b> Chan <b>30(Y)</b>	APP CRS <b>276°</b>	Rwy Idg TDZE Apt Elev	<b>5002</b> <b>3142</b> <b>3178</b>
---	------------------------	-----------------------------	---

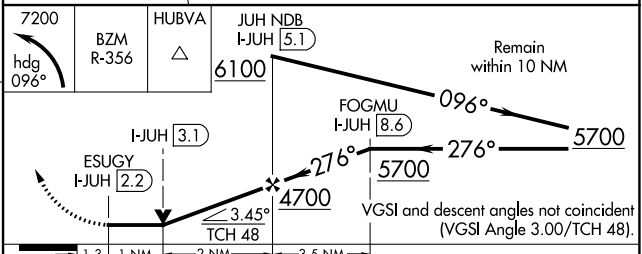
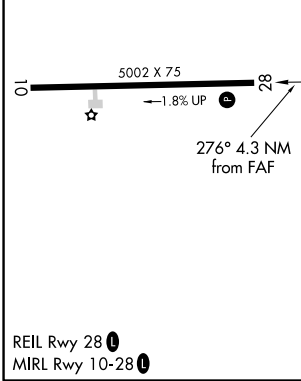
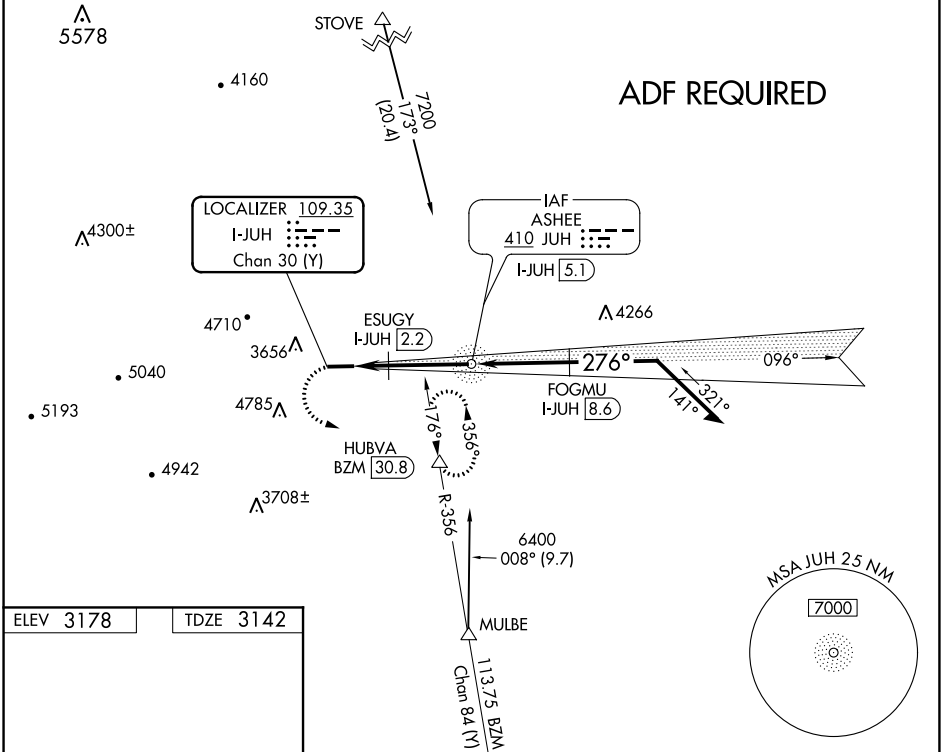
# LOC RWY 28

ASHE COUNTY (GEV)

**NA** Circling Rwy 10 NA at night. DME required. Rwy 28 helicopter visibility reduction below 3/4 SM NA. VDP NA when using Marion/Wytheville altimeter setting. When local altimeter setting not received, use Marion/Wytheville altimeter setting and increase all MDA 160 feet and S-28 Cats C/D visibility 1/2 mile.

**MISSED APPROACH:** Climbing left turn to 7200 on heading 096° and BZM VOR/DME R-356 to HUBVA/BZM 30.8 DME and hold, continue climb-in-hold to 7200.

AWOS-3 <b>120.675</b>	ATLANTA CENTER <b>125.15 263.0</b>	UNICOM <b>122.8 (CTAF)</b>
--------------------------	---------------------------------------	-------------------------------



CATEGORY	A	B	C	D
S-28	3860-1 1/2	718 (700-1 1/2)	3860-2	718 (700-2)
<b>C</b> CIRCLING	4240-1 1/2	1062 (1100-1 1/2)	NA	

SE-2, 09 SEP 2021 to 07 OCT 2021

SE-2, 09 SEP 2021 to 07 OCT 2021

WAAS CH <b>70437</b> <b>W28A</b>	APP CRS <b>276°</b>	Rwy Idg TDZE Apt Elev	<b>5002</b> <b>3142</b> <b>3178</b>
--	------------------------	-----------------------------	---

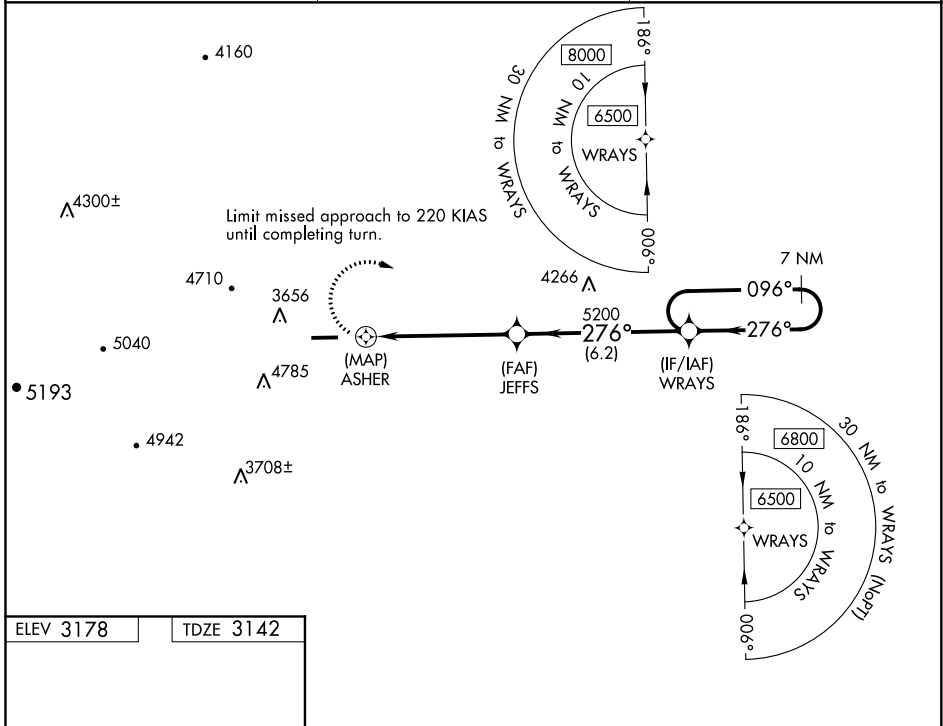
# RNAV (GPS) RWY 28

ASHE COUNTY (GEV)

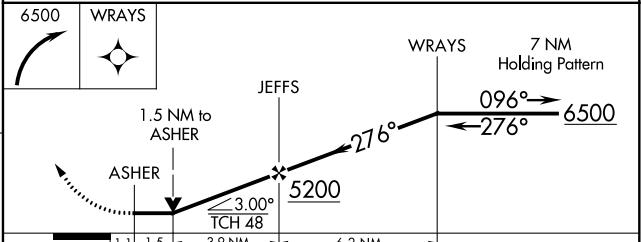
⚠ Circling Rwy 10 NA at night. Circling NA for Cat D north of Rwy 10-28. DME/DME RNP-0.3 NA. Rwy 28 helicopter visibility reduction below 3/4 SM NA. VDP NA when using Marion/Wytheville altimeter setting. When local altimeter setting not received, use Marion/Wytheville altimeter setting and increase all MDA 160 feet and LP and LNAV Cat B visibility 1/4 mile and LP and LNAV Cats C/D visibility 1/2 mile. Cats C/D Circling NA when using Marion/Wytheville altimeter setting.

⚠ MISSED APPROACH: Climbing right turn to 6500 direct WRAYS and hold.

AWOS-3 <b>120.675</b>	ATLANTA CENTER <b>125.15 263.0</b>	UNICOM <b>122.8 (CTAF)</b>
--------------------------	---------------------------------------	-------------------------------



ELEV 3178	TDZE 3142
REIL Rwy 28	MIRL Rwy 10-28



CATEGORY	A	B	C	D
LP MDA	3960-1¼	818 (800-1¼)	3960-2½	818 (800-2½)
LNAV MDA	4060-1¼	918 (900-1¼)	4060-2½	918 (900-2½)
<b>C</b> CIRCLING	4240-1¼ 1062 (1100-1¼)	4240-1½ 1062 (1100-1½)	5140-3	1962 (2000-3)

SE-2, 09 SEP 2021 to 07 OCT 2021

SE-2, 09 SEP 2021 to 07 OCT 2021