

APP CRS 009°	Rwy Idg TDZE Apt Elev	5000 802 803
------------------------	-----------------------------	---

RNAV (GPS) RWY 1

SHELBYVILLE MUNI (GEZ)

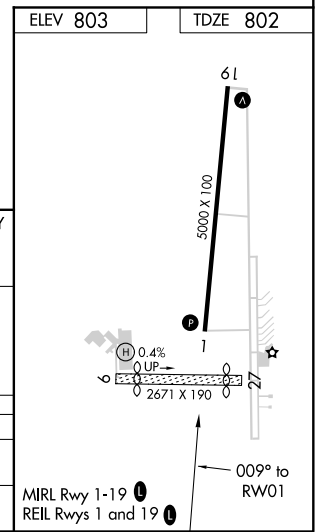
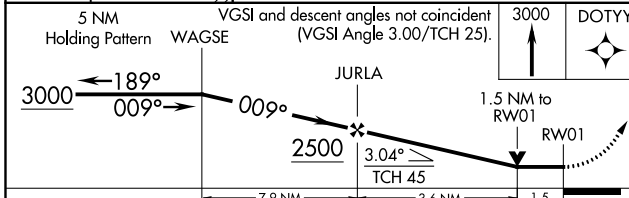
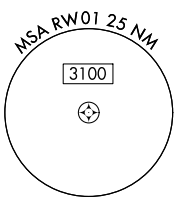
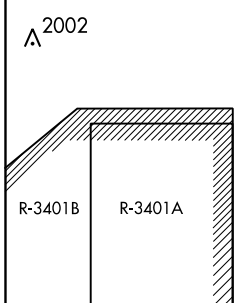
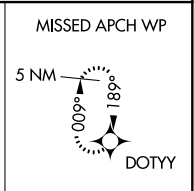
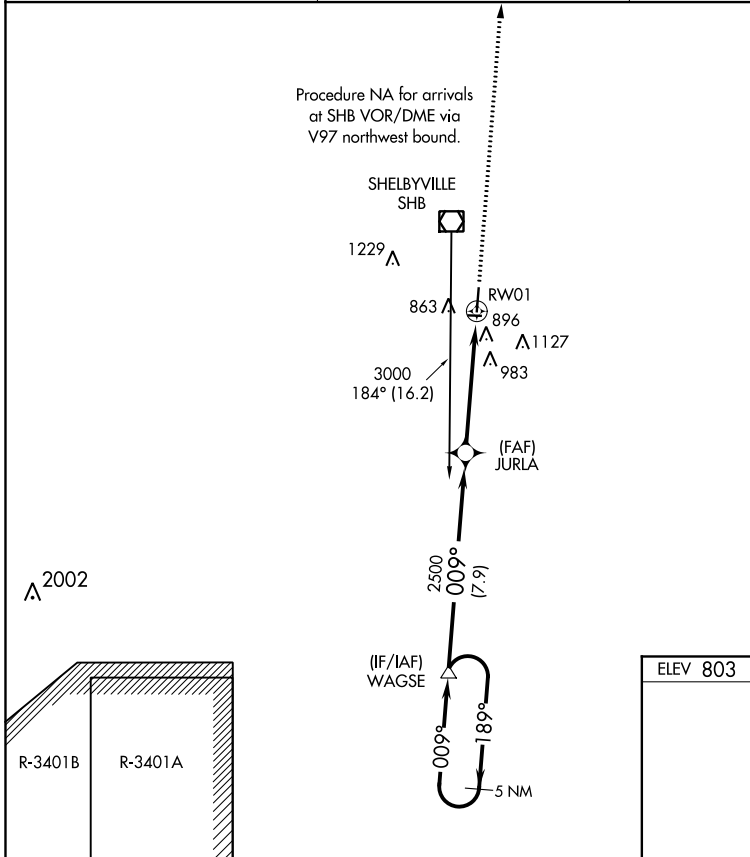
⚠ DME/DME RNP-0.3 NA. Helicopter visibility reduction below $\frac{3}{4}$ SM NA. VDP NA when using Indianapolis Intl altimeter setting. Circling Rwy 9, 27 NA at night. If local altimeter setting not received, use Indianapolis Intl altimeter setting and increase all MDAs 60 feet.

MISSED APPROACH: Climb to 3000 direct DOTYY and hold.

ASOS
121.55

INDIANAPOLIS APP CON
127.15 317.8

UNICOM
122.8 (CTAF) 0



CATEGORY	A	B	C	D
LNVA MDA	1300-1	498 (500-1)	1300-1 $\frac{3}{8}$	498 (500-1 $\frac{3}{8}$)
CIRCLING	1300-1	497 (500-1)	1320-1 $\frac{1}{2}$ 517 (600-1 $\frac{1}{2}$)	1480-2 $\frac{1}{4}$ 677 (700-2 $\frac{1}{4}$)

EC-2, 07 OCT 2021 to 04 NOV 2021

EC-2, 07 OCT 2021 to 04 NOV 2021

WAAS CH 53603 W19A	APP CRS 189°	Rwy Idg TDZE Apt Elev	5000 803 803
--	------------------------	-----------------------------	---

RNAV (GPS) RWY 19

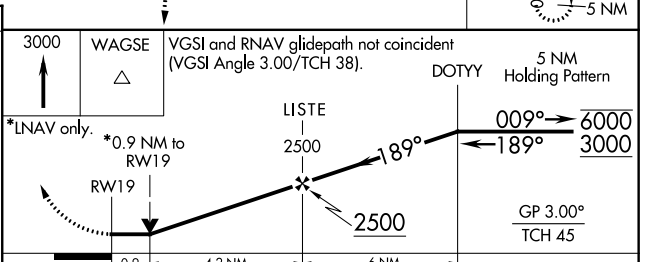
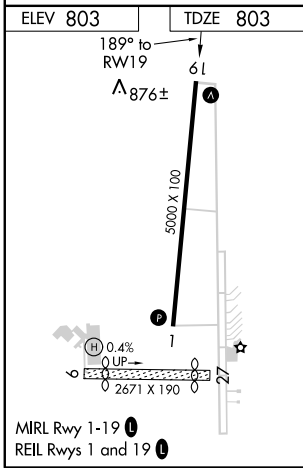
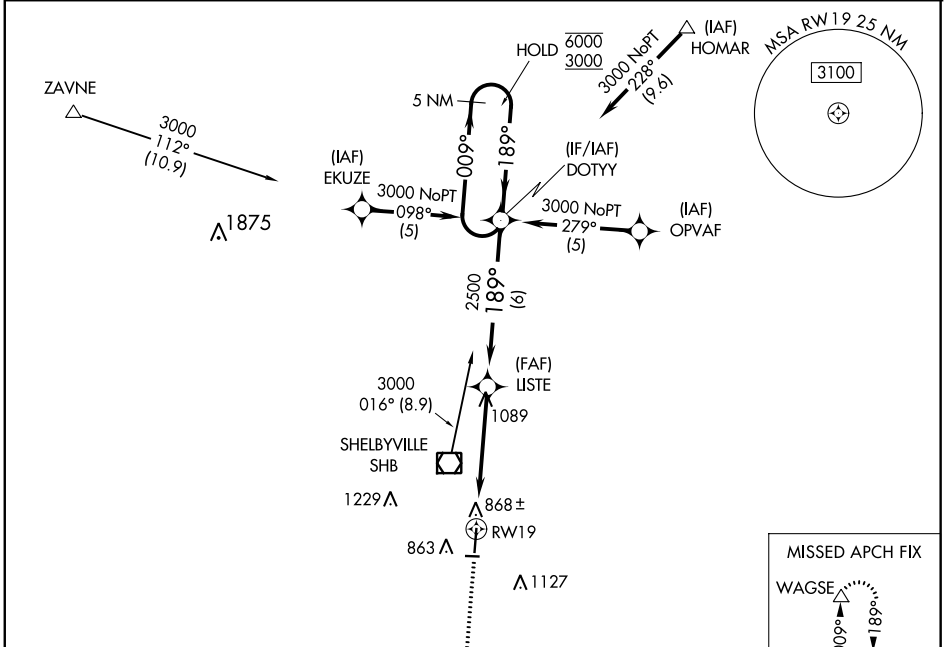
SHELBYVILLE MUNI (G/EZ)

RNP APCH:

⚠ Circling Rwy 9, 27 NA at night. Baro-VNAV NA when using Indianapolis Intl altimeter setting. For uncompensated Baro-VNAV systems, LNAV/VNAV NA below -16°C or above 54°C. VDP NA when using Indianapolis Intl altimeter setting. When local altimeter setting not received, use Indianapolis Intl altimeter setting: increase LPV DA to 1152 feet and LNAV/VNAV DA to 1199 feet; increase all MDAs 60 feet and LNAV visibility Cats C and D ½ SM.

⚠ MISSED APPROACH: Climb to 3000 direct WAGSE and hold.

ASOS 121.55	INDIANAPOLIS APP CON 127.15 317.8	UNICOM 122.8 (CTAF) 0
-----------------------	---	---------------------------------



CATEGORY	A	B	C	D
LPV DA	1095-1 292 (300-1)			
LNAV/VNAV DA	1142-1¼ 339 (400-1¼)			
LNAV MDA	1140-1 337 (400-1)			
CIRCLING	1200-1 397 (400-1)	1260-1 457 (500-1)	1320-1½ 517 (600-1½)	1480-2¼ 677 (700-2¼)

EC-2, 07 OCT 2021 to 04 NOV 2021

EC-2, 07 OCT 2021 to 04 NOV 2021

SHELBYVILLE, INDIANA

AL-5514 (FAA)

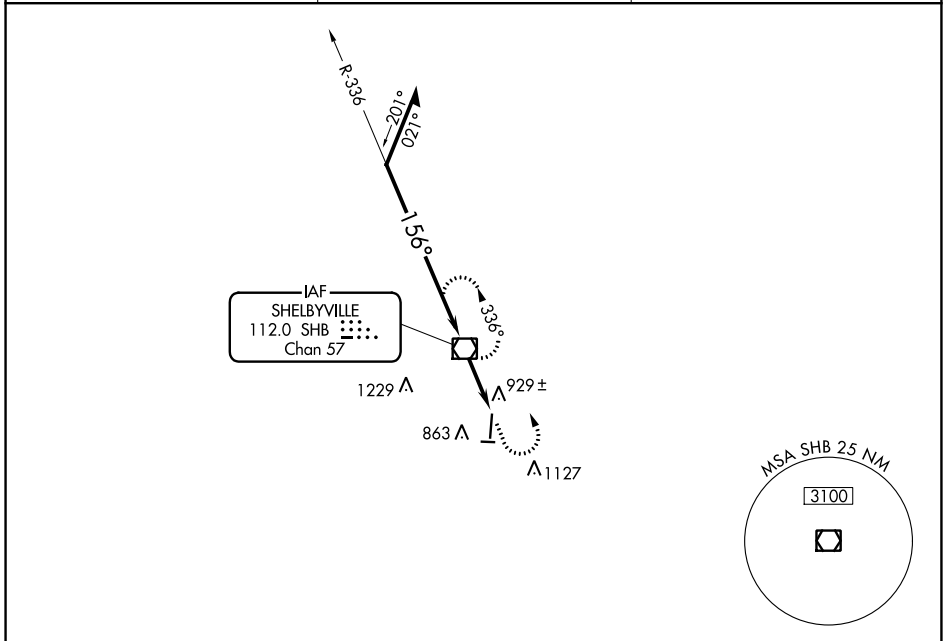
19115

VOR/DME SHB 112.0 Chan 57	APP CRS 156°	Rwy Idg TDZE Apt Elev 5000 803 803
---	------------------------	--

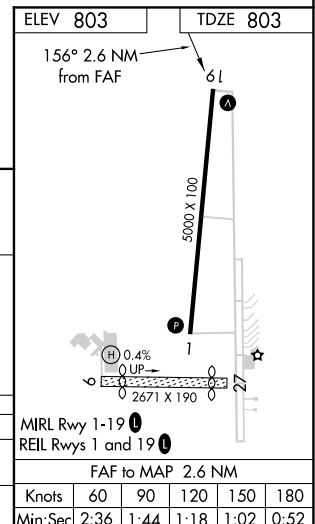
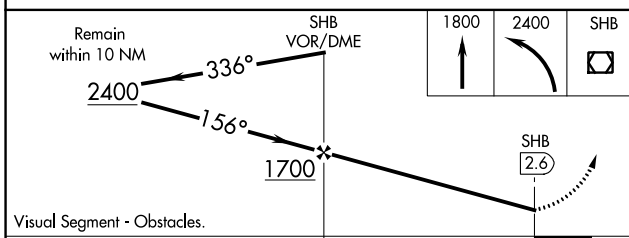
VOR RWY 19
SHELBYVILLE MUNI (G/EZ)

⚠ Circling Rwy 9, 27 NA at night. MISSED APPROACH: Climb to 1800 then climbing left turn to 2400 direct SHB VOR/DME and hold.

ASOS 121.55	INDIANAPOLIS APP CON 127.15 317.8	UNICOM 122.8 (CTAF) 📻
-----------------------	---	--



⚠ 2002



CATEGORY	A	B	C	D
S-19	1180-1 377 (400-1)			1180-1¼ 377 (400-1¼)
CIRCLING	1240-1 437 (500-1)	1260-1 457 (500-1)	1320-1½ 517 (600-1½)	1480-2¼ 677 (700-2¼)

ELEV 803	TDZE 803
156° 2.6 NM from FAF	
61	
5000 X 100	
0.4% UP	
2671 X 190	
MRL Rwy 1-19 📻	
REIL Rwy 1 and 19 📻	
FAF to MAP 2.6 NM	
Knots	60 90 120 150 180
Min:Sec	2:36 1:44 1:18 1:02 0:52

SHELBYVILLE, INDIANA
Amdt 1B 10NOV16

39°35'N-85°48'W

SHELBYVILLE MUNI (G/EZ)
VOR RWY 19

EC-2, 07 OCT 2021 to 04 NOV 2021

EC-2, 07 OCT 2021 to 04 NOV 2021