

WAAS CH 69223 W05A	APP CRS 054°	Rwy Idg TDZE Apt Elev	3318 1224 1224
--	------------------------	-----------------------------	---

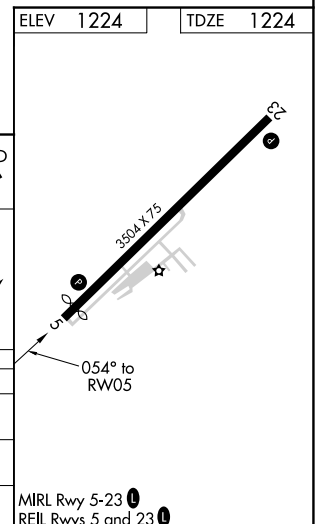
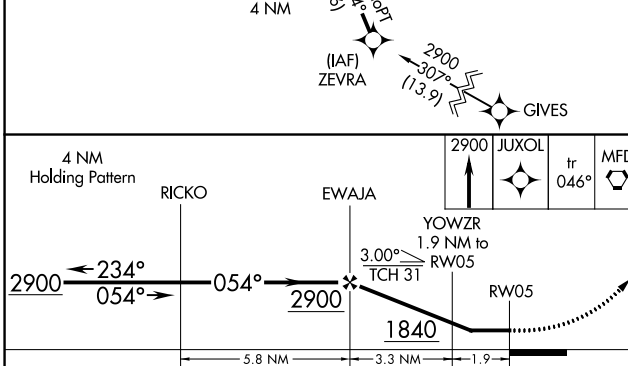
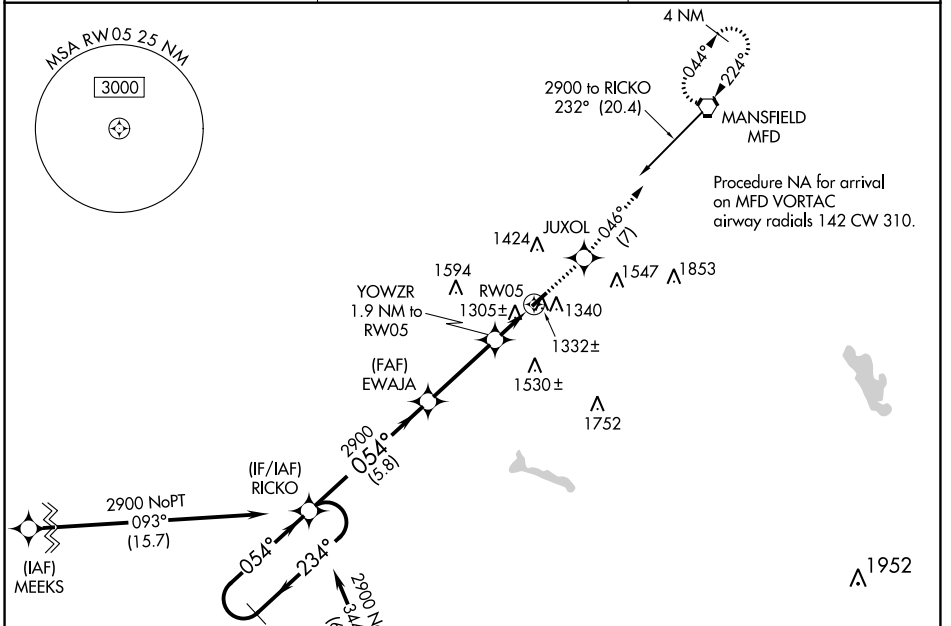
RNAV (GPS) RWY 5

GALLION MUNI (GQQ)

NA Helicopter visibility reduction below 1 SM NA.
DME/DME RNP-0.3 NA. Use Mansfield altimeter setting.
Straight-in Rwy 5 NA at night, Circling Rwy 5 NA at night.

MISSED APPROACH: Climb to 2900 direct JUXOL and on track 046° to MFD VORTAC and hold.

CLEVELAND APP CON ★ 124.2 360.65	CLNC DEL 126.8	UNICOM 122.8 (CTAF) 1
--	--------------------------	---------------------------------



CATEGORY	A	B	C	D
LP MDA	1600-1	376 (400-1)		NA
LNVA MDA	1620-1	396 (400-1)	1620-1½ 396 (400-1½)	NA
CIRCLING	1800-1	576 (600-1)	1800-1½ 576 (600-1½)	NA

EC-2, 22 APR 2021 to 20 MAY 2021

EC-2, 22 APR 2021 to 20 MAY 2021

MIRL Rwy 5-23 1
REL Rwy 5 and 23 1

VORTAC MFD 108.8 Chan 25	APP CRS 224°	Rwy Idg TDZE Apt Elev 3504 1224 1224
--	------------------------	--

VOR RWY 23

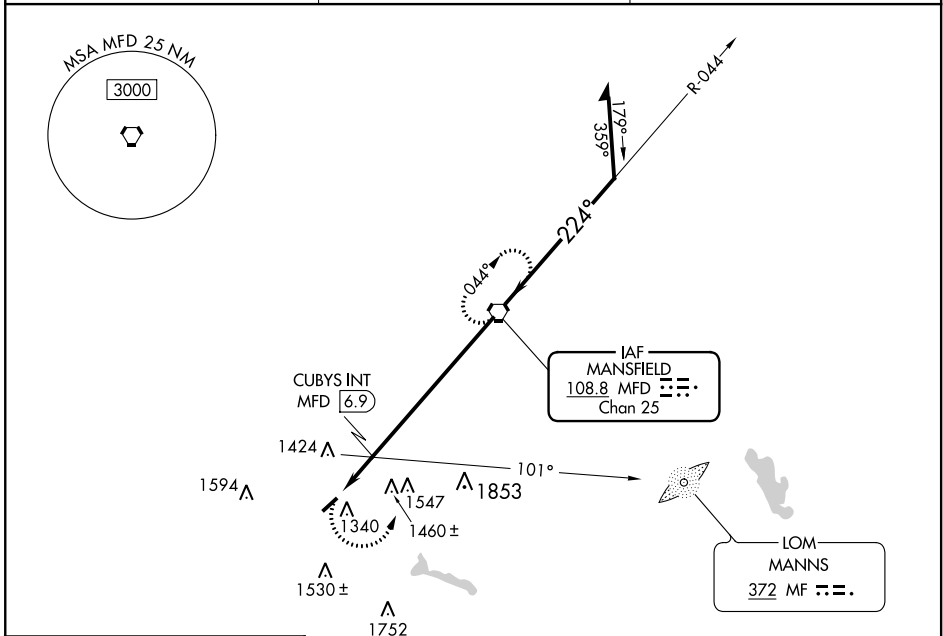
GALLION MUNI (GQQ)

RADAR required for procedure entry.

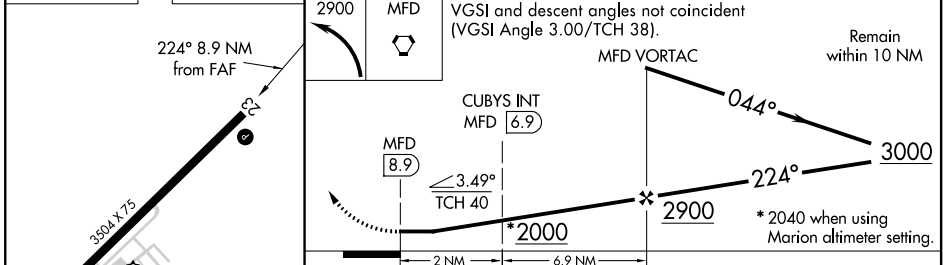
NA Procedure NA at night. Use Mansfield altimeter setting; when not received, use Marion altimeter setting and increase all MDA 40 feet and increase CUBYS fix minimums S-23 and Circling Cat C visibility 1/2 SM. Rwy 23 helicopter visibility reduction below 1 SM NA.

MISSED APPROACH: Climbing left turn to 2900 direct MFD VORTAC and hold.

CLEVELAND APP CON * 124.2 360.65	CLNC DEL 126.8	UNICOM 122.8 (CTAF) 0
--	--------------------------	---------------------------------



ELEV 1224	TDZE 1224
-----------	-----------



2900 MFD	VGSI and descent angles not coincident (VGSI Angle 3.00/TCH 38).	Remain within 10 NM
CUBYS INT MFD 6.9		
MFD 8.9		
3.49° TCH 40		
*2000		*2040 when using Marion altimeter setting.
2 NM	6.9 NM	

CATEGORY	A	B	C	D
S-23	2000-1 776 (800-1)	2000-1¼ 776 (800-1¼)	2000-2½ 776 (800-2½)	NA
CIRCLING	2000-1 776 (800-1)	2000-1¼ 776 (800-1¼)	2000-2½ 776 (800-2½)	NA
CUBYS FIX MINIMUMS				
S-23	1760-1	536 (600-1)	1760-1½ 536 (600-1½)	NA
CIRCLING	1800-1	576 (600-1)	1800-1½ 576 (600-1½)	NA

REIL Rwys 5 and 23
MIRL Rwy 5-23

FAF to MAP 8.9 NM					
Knots	60	90	120	150	180
Min:Sec	8:54	5:56	4:27	3:34	2:58

EC-2, 22 APR 2021 to 20 MAY 2021

EC-2, 22 APR 2021 to 20 MAY 2021