

NDB GUY 275	APP CRS 177°	Rwy Idg 5904
		TDZE 3125
		Apt Elev 3125

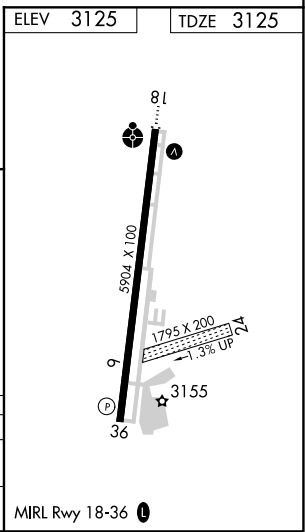
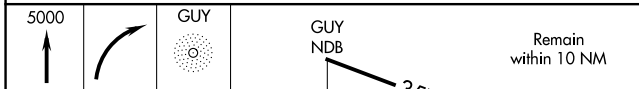
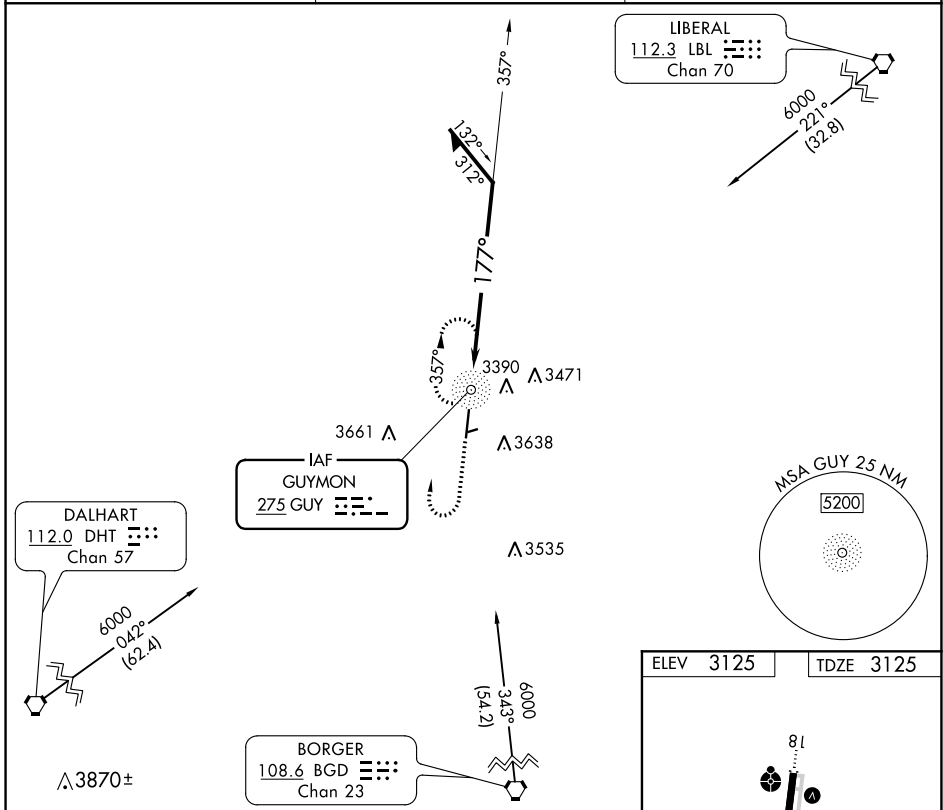
NDB RWY 18

GUYMON MUNI (GUY)

▽ Circling NA east of Rwy 18-36. When local altimeter setting not received, use Liberal altimeter setting and increase all MDA 120 feet, increase S-18 Cat A visibility ¼ SM; increase Circling Cats A and C ¼ SM. Circling NA to Rwy 6 and 24.

ODALS MISSED APPROACH: Climb to 5000 then right turn direct GUY NDB and hold.

ASOS 119.925	KANSAS CITY CENTER 134.0 257.865	UNICOM 122.7 (CTAF) 0
------------------------	--	---------------------------------



5000		GUY
------	--	-----

CATEGORY	A	B	C	D
S-18	3900-1 775 (800-1)	3900-1¼ 775 (800-1¼)	3900-2½ 775 (800-2½)	NA
CIRCLING	3900-1 775 (800-1)	3900-1¼ 775 (800-1¼)	3900-2½ 775 (800-2½)	NA

SC-1, 22 APR 2021 to 20 MAY 2021

SC-1, 22 APR 2021 to 20 MAY 2021

WAAS CH 82625 W18A	APP CRS 177°	Rwy Idg TDZE 3125 Apt Elev 3125
--	------------------------	---

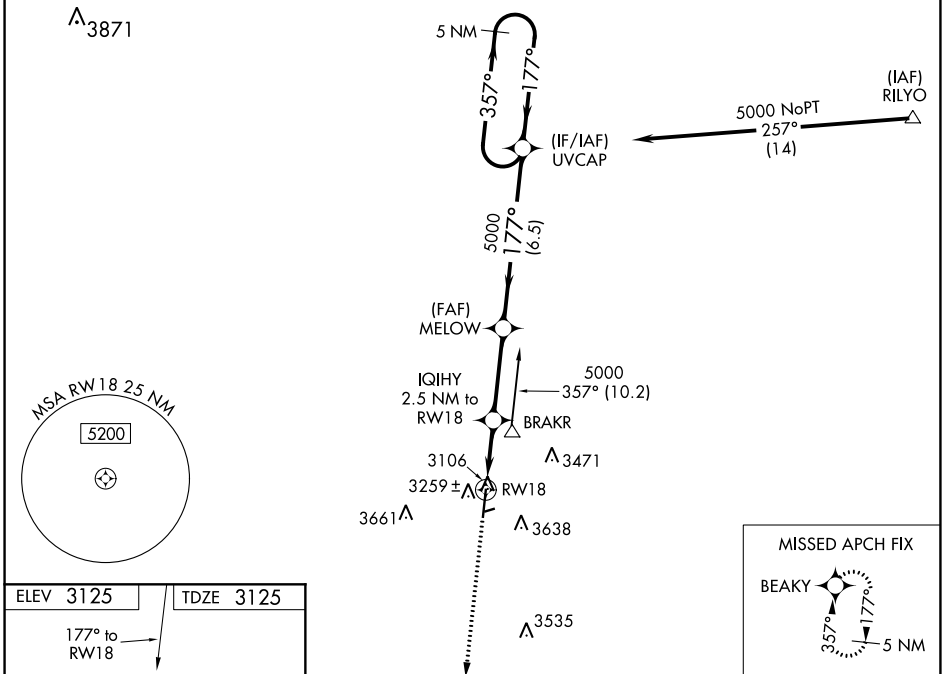
RNAV (GPS) RWY 18

GUYMON MUNI (GUY)

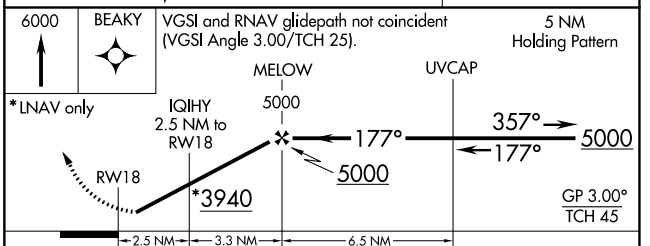
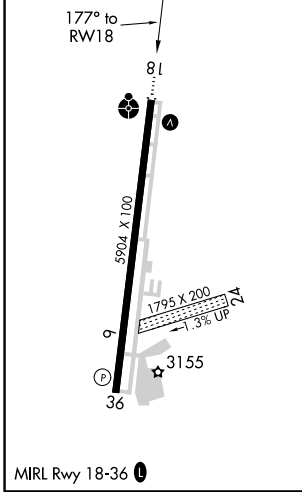
⚠ Baro-VNAV NA when using Liberal altimeter setting. For uncompensated Baro-VNAV systems, LNAV/VNAV NA below -21°C (-5°F) or above 54°C (130°F). When VGSI inop, Straight-in/ Circling Rwy 18 procedure NA at night. Circling NA East of Rwy 18-36. DME/DME RNP-0.3 NA. Visibility reduction by helicopters NA. When local altimeter not received, use Liberal altimeter setting and increase all DA 113 feet and all MDA 120 feet, increase LPV all Cats visibility ¼ mile, increase LNAV/VNAV all Cats and LNAV Cat C visibility ⅓ mile. Circling NA to Rwy's 6 and 24.

ODALS
MISSED APPROACH:
Climb to 6000 direct BEAKY and hold.

ASOS 119.925	KANSAS CITY CENTER 134.0 257.865	UNICOM 122.7 (CTAF) 📻
------------------------	--	--



ELEV 3125	TDZE 3125
-----------	-----------



CATEGORY	A	B	C	D
LPV DA		3375-1	250 (300-1)	NA
LNAV/VNAV DA		3451-1	326 (400-1)	NA
LNAV MDA		3520-1	395 (400-1)	NA
CIRCLING	3580-1	455 (500-1)	3580-1½ 455 (500-1½)	NA

SC-1, 22 APR 2021 to 20 MAY 2021

SC-1, 22 APR 2021 to 20 MAY 2021

WAAS CH 50525 W36A	APP CRS 357°	Rwy Idg 5904 TDZE 3125 Apt Elev 3125
--	------------------------	---

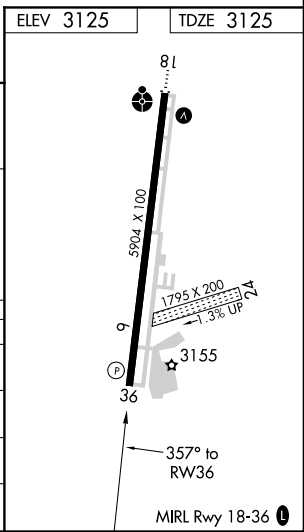
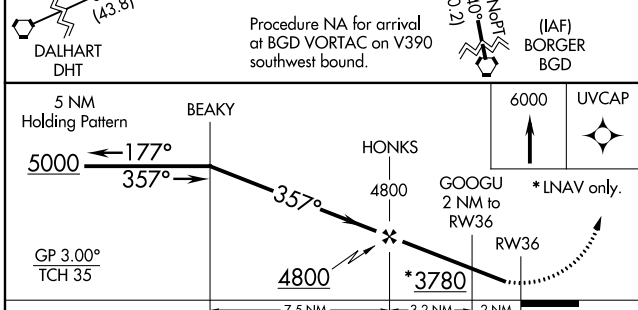
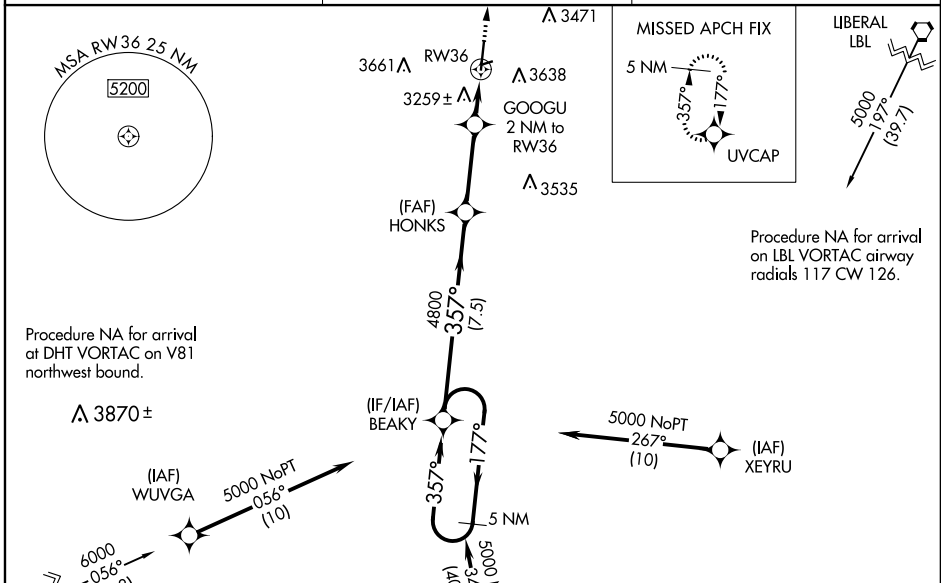
RNAV (GPS) RWY 36

GUYMON MUNI (GUY)

⚠ Baro-VNAV NA when using Liberal altimeter setting. For uncompensated Baro-VNAV systems, LNAV/VNAV NA below -21°C (-5°F) or above 54°C (130°F). When VGSi inop, Straight-in/Circling Rwy 36 procedure NA at night. Circling NA East of Rwy 18-36. DME/DME RNP-0.3 NA. Visibility reduction by helicopters NA. When local altimeter not received, use Liberal altimeter setting and increase all DA 113 feet and all MDA 120 feet, increase LPV all Cats visibility ¼ mile, increase LNAV/VNAV all Cats and LNAV Cat C visibility ⅓ mile. Circling NA to Rwy 6 and 24.

MISSED APPROACH:
Climb to 6000 direct UVCAP and hold.

ASOS 119.925	KANSAS CITY CENTER 134.0 257.865	UNICOM 122.7 (CTAF) 0
------------------------	--	---------------------------------



CATEGORY	A	B	C	D
LPV DA	3375-1 250 (300-1)			NA
LNAV/VNAV DA	3584-1 5/8 459 (500-1 5/8)			NA
LNAV MDA	3520-1 395 (400-1)	3520-1 1/8 395 (400-1 1/8)		NA
CIRCLING	3580-1 455 (500-1)	3580-1 1/2 455 (500-1 1/2)		NA

SC-1, 22 APR 2021 to 20 MAY 2021

SC-1, 22 APR 2021 to 20 MAY 2021