

(BNYRD6.BNYRD) 18144

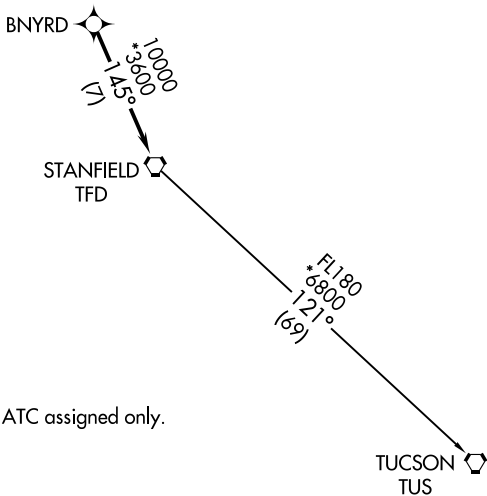
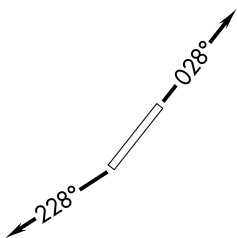
BNYRD SIX DEPARTURE (RNAV)

AL-6648 (FAA)

PHOENIX GOODYEAR (GYR)
GOODYEAR, ARIZONA

**TOP ALTITUDE:
ASSIGNED BY ATC**

ATIS	118.35
GND CON	121.7
GOODYEAR TOWER *	120.1 239.3
LUKE DEP CON *	125.45 263.125
PHOENIX DEP CON	120.7 239.0



TAKEOFF MINIMUMS

Rwys 3, 21: Standard.

- NOTE: RNAV 1.
- NOTE: Turbojets and turboprops only.
- NOTE: RADAR required.
- NOTE: GPS required.
- NOTE: Aircraft departing KGEU and KGYR ATC assigned only.

NOTE: Chart not to scale.



DEPARTURE ROUTE DESCRIPTION

TAKEOFF RUNWAY 3: Climb heading 028° or assigned by ATC, thence. . .

TAKEOFF RUNWAY 21: Climb heading 228° or as assigned by ATC, thence. . .

. . . expect RADAR vectors to BNYRD, then on track 145° to TFD VORTAC, then on (transition), maintain ATC assigned altitude, expect filed altitude 3 minutes after departure.

TUCSON TRANSITION (BNYRD6.TUS)

BNYRD SIX DEPARTURE (RNAV)

(BNYRD6.BNYRD) 24MAY18

GOODYEAR, ARIZONA
PHOENIX GOODYEAR (GYR)

SW-4, 22 FEB 2024 to 21 MAR 2024

SW-4, 22 FEB 2024 to 21 MAR 2024

FTHLS SIX DEPARTURE (RNAV)
(FTHLS6.FTHLS) 24MAR18

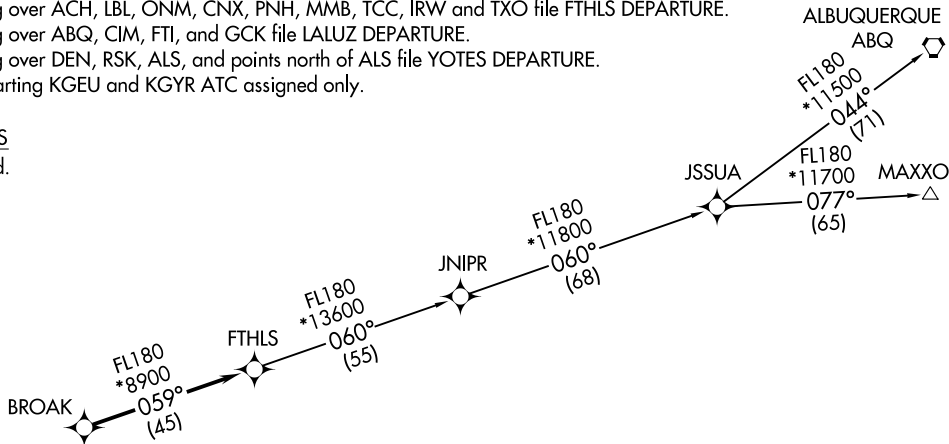
ATIS
118.35
GND CON
121.7
GOODYEAR TOWER ★
120.1 239.3
LUKE DEP CON ★
125.45 263.125
PHOENIX DEP CON
120.7 239.0

NOTE: RNAV 1.
NOTE: Turbojets and turboprops only.
NOTE: RADAR required.
NOTE: GPS required.
NOTE: ABQ transition ATC assigned only.
NOTE: Aircraft filing over ACH, LBL, ONM, CNX, PNH, MMB, TCC, IRW and TXO file FTHLS DEPARTURE.
NOTE: Aircraft filing over ABQ, CIM, FTI, and GCK file LALUZ DEPARTURE.
NOTE: Aircraft filing over DEN, RSK, ALS, and points north of ALS file YOTES DEPARTURE.
NOTE: Aircraft departing KGEU and KGYR ATC assigned only.

TAKEOFF MINIMUMS

Rwys 3, 21: Standard.

TOP ALTITUDE:
ASSIGNED BY ATC



FTHLS SIX DEPARTURE (RNAV)
(FTHLS6.FTHLS) 18144

AL-6648 (FAA)

PHOENIX GOODYEAR (GYYR)
GOODYEAR, ARIZONA



DEPARTURE ROUTE DESCRIPTION

TAKEOFF RUNWAY 3: Climb heading 028° or as assigned by ATC, thence. . .

TAKEOFF RUNWAY 21: Climb heading 228° or as assigned by ATC, thence. . .

. . . expect RADAR vectors to BROAK, then on track 059° to FTHLS, then on (transition).
Maintain ATC assigned altitude, expect filed altitude 3 minutes after departure.

ALBUQUERQUE TRANSITION (FTHLS6.ABQ)

JNIPR TRANSITION (FTHLS6.JNIPR)


MAXXO TRANSITION (FTHLS6.MAXXO)


NOTE: Chart not to scale.





NOTE: RADAR required.

ATIS
118.35
GND CON
121.7
GOODYEAR TOWER ★
120.1 239.3
LUKE DEP CON ★
125.45 263.125
PHOENIX DEP CON
120.7 239.0

FLAGSTAFF
113.85 FLG 
Chan 85(Y)

WINSLOW
112.6 INW 
Chan 73

DRAKE
114.1 DRK 
Chan 88

ST JOHNS
112.3 SJN 
Chan 70


TAKEOFF MINIMUMS

Rwy 3: Standard
Rwy 21: Standard with minimum
climb of 252' per NM to 2300.

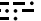
TAKEOFF OBSTACLE NOTES


Rwy 3: Poles beginning 159' from DER, 267' right of centerline,
up to 47' AGL/1015' MSL.
Building 1512' from DER, 828' right of centerline, 48' AGL/1014' MSL.
Tree 1957' from DER, 551' right of centerline, up to 49' AGL/1019' MSL.
Rwy 21: Transmission tower 2610' from DER, 1078' left of centerline, 125' AGL/1047' MSL.
Transmission tower 3190' from DER, 311' left of centerline, 112' AGL/1031' MSL.
Pole 3193' from DER, 308' left of centerline, 112' AGL/1030 MSL.

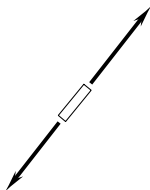
NOTE: Chart not to scale.

BUCKEYE
110.6 BXK 
Chan 43

GILA BEND
116.6 GBN 
Chan 113

PHOENIX
115.6 PXR 
Chan 103

STANFIELD
114.8 TFD 
Chan 95



DEPARTURE ROUTE DESCRIPTION

TAKEOFF RUNWAY 3: Climb to assigned altitude on assigned heading
between 353° CW to 063° from DER, thence
TAKEOFF RUNWAY 21: Climb to assigned altitude on assigned heading
between 208° CW to 243° from DER, thence

. . . . Expect radar vectors to assigned route. Expect filed altitude 3
minutes after departure.

LOST COMMUNICATIONS: If no transmissions are received within
one minute after departure, climb to 6000' then proceed direct BXK
VORTAC, then via assigned route.

ZZZO EIGHT DEPARTURE (RNAV)
(IZZ08, IZZO) 25JAN24

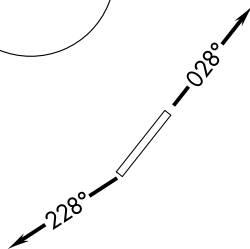
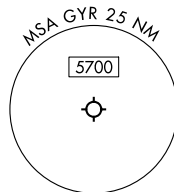
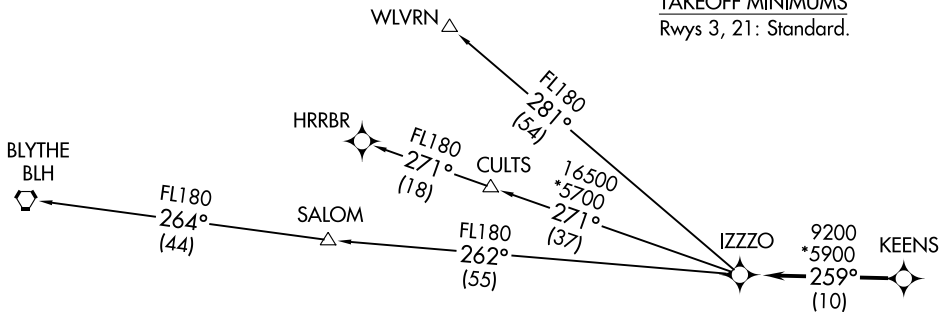
LUKE DEP CON*
125.45 263.125
PHOENIX DEP CON
120.7 239.0
ATIS
118.35
GND CON
121.7
GOODYEAR TOWER*
120.1 239.3

**TOP ALTITUDE:
ASSIGNED BY ATC**

RNAV 1 - GPS.
RADAR required.

NOTE: Turbojets and turboprops only.
NOTE: Aircraft requesting FL220 and below must file BLYTHE Transition.
NOTE: Turbojets landing LAX, file WLVRN Transition.
NOTE: Aircraft landing other than LAX and turboprops landing at LAX:
Requesting FL240 and above, file HRRBR Transition.
NOTE: Aircraft departing KGEU and KGYR ATC assigned only.

TAKEOFF MINIMUMS
Rwys 3, 21: Standard.



DEPARTURE ROUTE DESCRIPTION

TAKEOFF RUNWAY 3: Climb on heading 028° or as assigned by ATC, thence. . . .
TAKEOFF RUNWAY 21: Climb on heading 228° or as assigned by ATC, thence. . . .
. . . .for RADAR vectors to KEENS, then on track 259° to IZZO, then on (transition).
Maintain ATC assigned altitude, expect filed altitude 3 minutes after departure.

- BLYTHE TRANSITION (IZZ08.BLH)
- HRRBR TRANSITION (IZZ08.HRRBR)
- WLVRN TRANSITION (IZZ08.WLVRN)

NOTE: Chart not to scale.

GOODYEAR, ARIZONA
PHOENIX GOODYEAR (GYR)

ZZZO EIGHT DEPARTURE (RNAV)
(IZZ08, IZZO) 24025

AL-6648 (FAA)

PHOENIX GOODYEAR (GYR)
GOODYEAR, ARIZONA

JUDTH SEVEN DEPARTURE (RNAV)
(JUDTH7.JUDTH) 24MAR18

ATIS
118.35
GND CON
121.7
GOODYEAR TOWER *
120.1 239.3
LUKE DEP CON *
125.45 263.125
PHOENIX DEP CON
120.7 239.0

DEPARTURE ROUTE DESCRIPTION

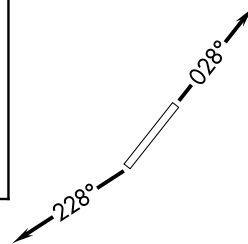
TAKEOFF RUNWAY 3: Climb heading 028° or as assigned by ATC, thence. . . .

TAKEOFF RUNWAY 21: Climb heading 228° or as assigned by ATC, thence. . . .

. . . .expect RADAR vectors to GBN VORTAC, then on track 249° to JUDTH, then on (transition). Maintain ATC assigned altitude, expect filed altitude 3 minutes after departure.

MOHAK TRANSITION (JUDTH7.MOHAK)

**TOP ALTITUDE:
ASSIGNED BY ATC**

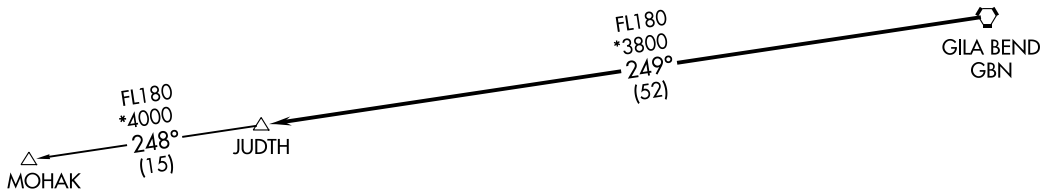


- NOTE: RNAV 1.
- NOTE: Turbojets and turboprops only.
- NOTE: RADAR required.
- NOTE: GPS required.
- NOTE: Aircraft departing KGEU and KGYR ATC assigned only.

TAKEOFF MINIMUMS

Rwys 3, 21: Standard.

GOODYEAR, ARIZONA
PHOENIX GOODYEAR (GYR)



NOTE: Chart not to scale.

(JUDTH7.JUDTH) 181.744
JUDTH SEVEN DEPARTURE (RNAV)

AL-6648 (FAA)

PHOENIX GOODYEAR (GYR)
GOODYEAR, ARIZONA

KATMN SIX DEPARTURE (RNAV)
 (KATMN6,KATMN) 24MAY18

ATIS
 118.35
 GND CON
 121.7
 GOODYEAR TOWER ★
 120.1 239.3
 LUKE DEP CON★
 125.45 263.125
 PHOENIX DEP CON
 120.7 239.0

**TOP ALTITUDE:
 ASSIGNED BY ATC**



DEPARTURE ROUTE DESCRIPTION

TAKEOFF RUNWAY 3: Climb heading 028° or as assigned by ATC, thence. . . .

TAKEOFF RUNWAY 21: Climb heading 228° or as assigned by ATC, thence. . . .

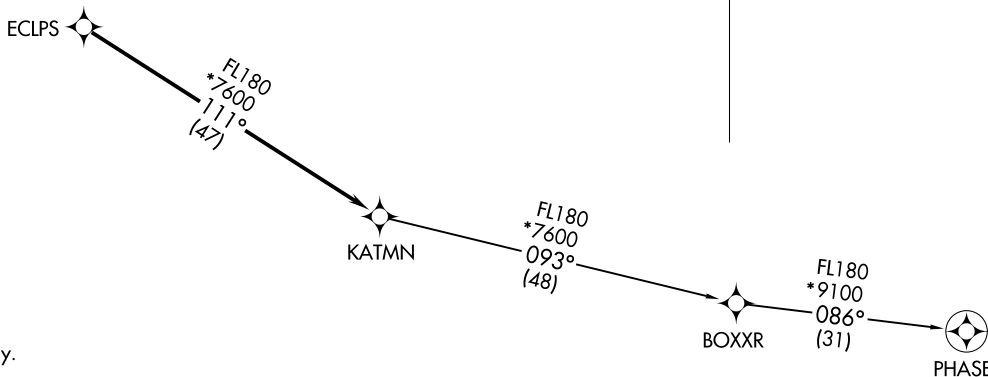
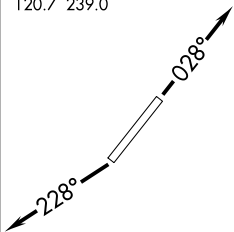
. . . .on RADAR vectors to ECLPS, then on track 111° to KATMN, then on (transition). Maintain ATC assigned altitude, expect filed altitude 3 minutes after departure.

PHASE TRANSITION (KATMN6.PHASE)

(KATMN6,KATMN) 18144
 KATMN SIX DEPARTURE (RNAV)

AL-6448 (FRAA)

PHOENIX GOODYEAR (GYR)
 GOODYEAR, ARIZONA



TAKEOFF MINIMUMS

Rwys 3, 21: Standard.

NOTE: RNAV 1.

NOTE: Turbojets and turboprops only.

NOTE: RADAR required.

NOTE: GPS required.

NOTE: Aircraft departing from KGEU and KGYR ATC assigned only.

NOTE: Chart not to scale.

GOODYEAR, ARIZONA
 PHOENIX GOODYEAR (GYR)

LALUZ SIX DEPARTURE (RNAV)
(LALUZ6.LALUZ) 24MAY18

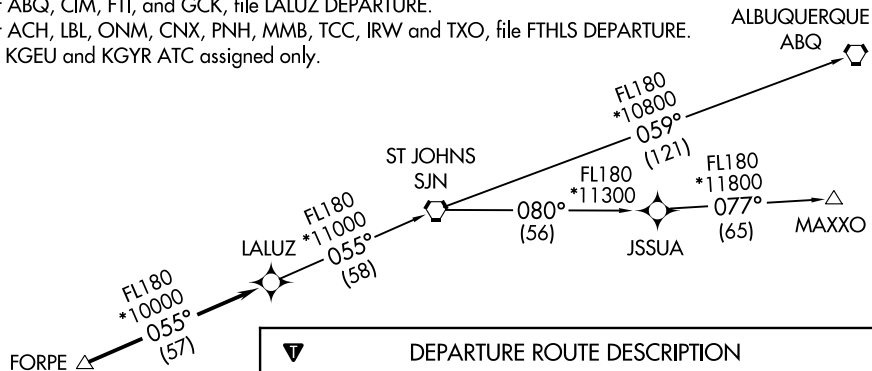
ATIS
118.35
GND CON
121.7
GOODYEAR TOWER ★
120.1 239.3
LUKE DEP CON★
125.45 263.125
PHOENIX DEP CON
120.7 239.0

NOTE: RNAV 1.
NOTE: Turbojets and turboprops only.
NOTE: RADAR required.
NOTE: GPS required.
NOTE: SJN TRANSITION for ABQ terminal arrivals only.
NOTE: MAXXO TRANSITION ATC assigned only.
NOTE: Aircraft filing over DEN, RSK, ALS, and points north of ALS, file YOTES DEPARTURE.
NOTE: Aircraft filing over ABQ, CIM, FTI, and GCK, file LALUZ DEPARTURE.
NOTE: Aircraft filing over ACH, LBL, ONM, CNX, PNH, MMB, TCC, IRW and TXO, file FTHLS DEPARTURE.
NOTE: Aircraft departing KGEU and KGYR ATC assigned only.

**TOP ALTITUDE:
ASSIGNED BY ATC**

TAKEOFF MINIMUMS

Rwys 3, 21: Standard.



DEPARTURE ROUTE DESCRIPTION

TAKEOFF RUNWAY 3: Climb heading 028° or as assigned by ATC, thence. . . .
TAKEOFF RUNWAY 21: Climb heading 228° or as assigned by ATC, thence. . . .
...expect RADAR vectors to FORPE, then on track 055° to LALUZ, then on (transition). Maintain ATC assigned altitude, expect filed altitude 3 minutes after departure.

- ALBUQUERQUE TRANSITION (LALUZ6.ABQ)
- MAXXO TRANSITION (LALUZ6.MAXXO)
- ST JOHNS TRANSITION (LALUZ6.SJN)

NOTE: Chart not to scale.



GOODYEAR, ARIZONA
PHOENIX GOODYEAR (GTYR)

(LALUZ6.LALUZ) 18144
LALUZ SIX DEPARTURE (RNAV)

AL-6648 (FAA)

PHOENIX GOODYEAR (GTYR)
GOODYEAR, ARIZONA

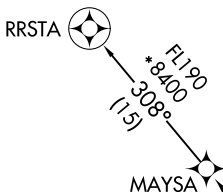
(MAYSA7.MAYSA) 20142

MAYSA SEVEN DEPARTURE (RNAV)

AL-6648 (FAA)

PHOENIX GOODYEAR (GYR)

GOODYEAR, ARIZONA



**TOP ALTITUDE:
ASSIGNED BY ATC**

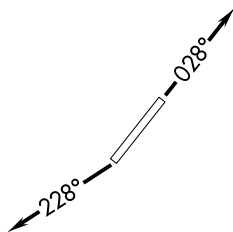
ATIS
118.35
GND CON
121.7
GOODYEAR TOWER*
120.1 239.3
LUKE DEP CON*
125.45 263.125
PHOENIX DEP CON
120.7 239.0



- NOTE: RNAV 1.
- NOTE: Turbojets and turboprops only.
- NOTE: RADAR required.
- NOTE: GPS required.
- NOTE: Aircraft departing KGEU and KGYR ATC assigned only. Do not file.

TAKEOFF MINIMUMS

Rwys 3, 21: Standard.



NOTE: Chart not to scale.



DEPARTURE ROUTE DESCRIPTION

TAKEOFF RUNWAY 3: Climb on heading 028° or as assigned by ATC, thence. . . .

TAKEOFF RUNWAY 21: Climb on heading 228° or as assigned by ATC, thence. . . .

. . . .expect RADAR vectors to cross ZEPER at or above 10000, then on track 308° to MAYSA, then on RRSTA TRANSITION. Maintain ATC assigned altitude, expect filed altitude 3 minutes after departure.

RRSTA TRANSITION (MAYSA7.RRSTA)

MAYSA SEVEN DEPARTURE (RNAV)

(MAYSA7.MAYSA) 21MAY20

GOODYEAR, ARIZONA
PHOENIX GOODYEAR (GYR)

SW-4, 22 FEB 2024 to 21 MAR 2024

SW-4, 22 FEB 2024 to 21 MAR 2024

**TOP ALTITUDE:
ASSIGNED BY ATC**

ATIS 118.35
GND CON 121.7
GOODYEAR TOWER * 120.1 239.3
LUKE DEP CON * 125.45 263.125
PHOENIX DEP CON 120.7 239.0

GRAND CANYON GCN

FL180
*9500
342°
(26)

RIMMM

FL180
*11500
343°
(110)

LOFTS

FL180
*11500
343°
(36)

CARTL

FL180
*9300
343°
(20)

SNOBL

14600
*8100
343°
(20)

QUAKY

FL180
*10700
043°
(94)

FL180
*10700
050°
(123)

TAKEOFF MINIMUMS

Rwys 3, 21: Standard.

NOTE: RNAV 1.

NOTE: Turbojets and turboprops only.

NOTE: RADAR required.

NOTE: GPS required.

NOTE: JARPA TRANSITION ATC assigned only.

NOTE: YOOPR TRANSITION ATC assigned only.

NOTE: CARTL TRANSITION for FLG or PGA terminal arrivals only.

NOTE: Aircraft departing KGEU and KGYR ATC assigned only.

DEPARTURE ROUTE DESCRIPTION

TAKEOFF RUNWAY 3: Climb heading 028° or as assigned by ATC, thence. . . .

TAKEOFF RUNWAY 21: Climb heading 228° or as assigned by ATC, thence. . . .

. . . .expect RADAR vectors to QUAKY, then on track 343° to SNOBL, then on (transition). Maintain ATC assigned altitude, expect filed altitude 3 minutes after departure.

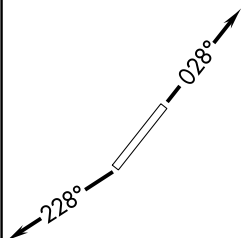
CARTL TRANSITION (SNOBL6.CARTL)

GRAND CANYON TRANSITION (SNOBL6.GCN)

JARPA TRANSITION (SNOBL6.JARPA)

RIMMM TRANSITION (SNOBL6.RIMMM)

YOOPR TRANSITION (SNOBL6.YOOPR)



NOTE: Chart not to scale.

(YOTES6.YOTES) 18144

YOTES SIX DEPARTURE (RNAV)

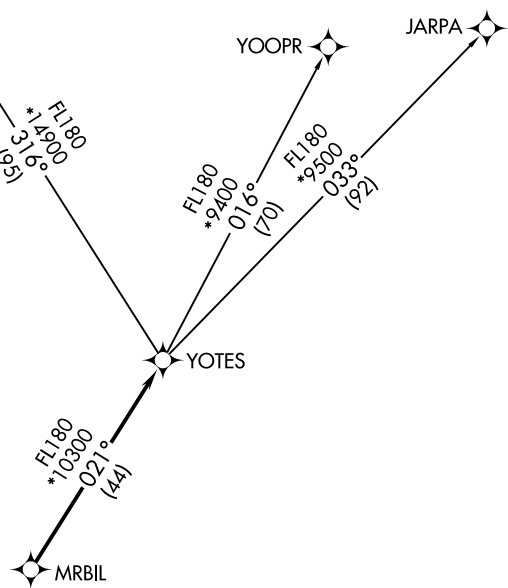
AL-6648 (FAA)

PHOENIX GOODYEAR (G·Y·R)
GOODYEAR, ARIZONA

ATIS
118.35
GND CON
121.7
GOODYEAR TOWER ★
120.1 239.3
LUKE DEP CON★
125.45 263.125
PHOENIX DEP CON
120.7 239.0

GRAND CANYON
GCN

**TOP ALTITUDE:
ASSIGNED BY ATC**



- NOTE: RNAV 1.
- NOTE: Turbojets and turboprops only.
- NOTE: RADAR required.
- NOTE: GPS required.
- NOTE: GCN TRANSITION ATC assigned only.
- NOTE: Aircraft departing KGEU and KGYR ATC assigned only.

TAKEOFF MINIMUMS
Rwys 3, 21: Standard.

NOTE: Chart not to scale.



DEPARTURE ROUTE DESCRIPTION

TAKEOFF RUNWAY 3: Climb heading 028° or as assigned by ATC, thence. . . .

TAKEOFF RUNWAY 21: Climb heading 228° or as assigned by ATC, thence. . . .

. . . .expect RADAR vectors to MRBIL, then on track 021° to YOTES, then on (transition).
Maintain ATC assigned altitude, expect filed altitude 3 minutes after departure.

GRAND CANYON TRANSITION (YOTES6.GCN)

JARPA TRANSITION (YOTES6.JARPA)

YOOPR TRANSITION (YOTES6.YOOPR)

YOTES SIX DEPARTURE (RNAV)
(YOTES6.YOTES) 24MAY18

GOODYEAR, ARIZONA
PHOENIX GOODYEAR (G·Y·R)

SW-4, 22 FEB 2024 to 21 MAR 2024

SW-4, 22 FEB 2024 to 21 MAR 2024