

WAAS CH <b>81923</b> <b>W18A</b>	APP CRS <b>174°</b>	Rwy Idg <b>5001</b> TDZE <b>1177</b> Apt Elev <b>1193</b>
--	------------------------	---

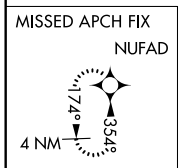
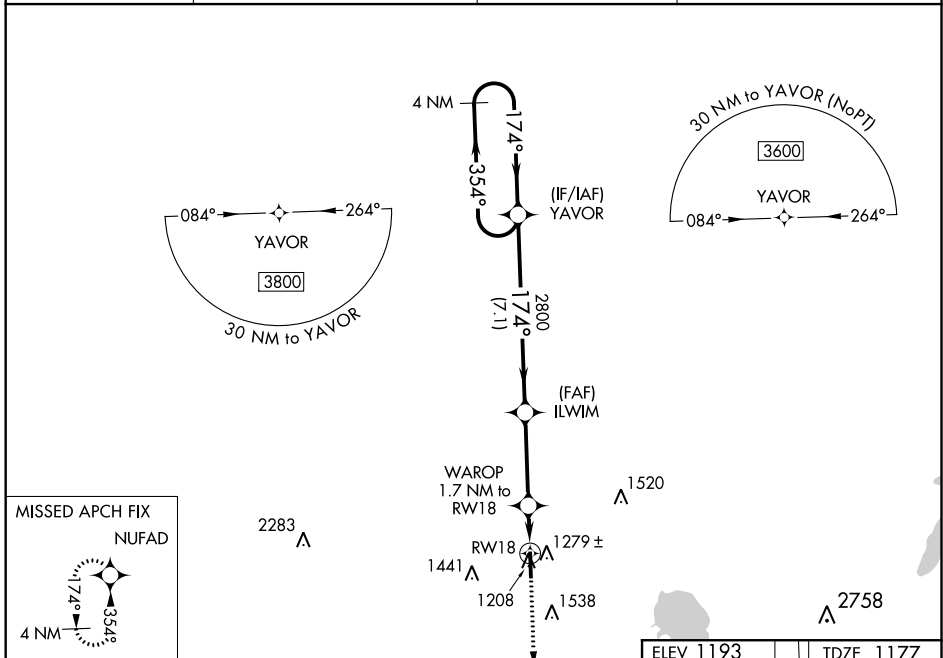
# RNAV (GPS) RWY 18

SUNDANCE (HSD)

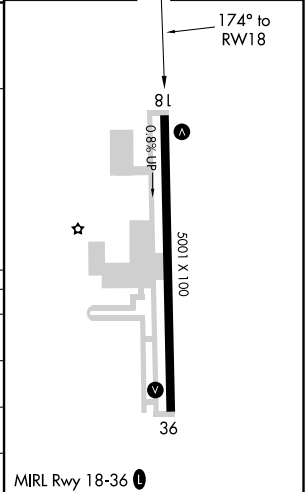
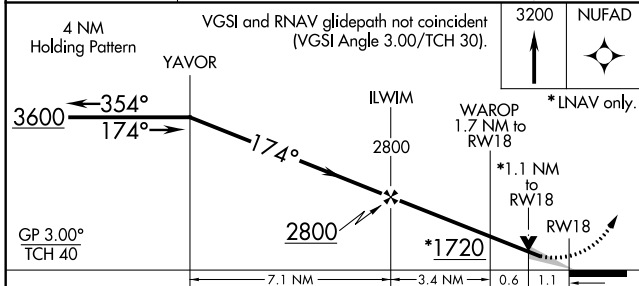
**⚠** For uncompensated Baro-VNAV systems, LNAV/VNAV NA below -17°C (2°F) or above 54°C (130°F). Baro-VNAV and VDP NA when using Wiley Post altimeter setting.  
**⚠** DME/DME RNP-0.3 NA. Circling Rwy 36 NA at night.

MISSED APPROACH:  
Climb to 3200 direct NUFAD and hold.

AWOS-3 <b>120.975</b>	OKE CITY APP CON <b>124.6 266.8</b>	CLNC DEL <b>123.7</b>	UNICOM <b>122.7 (CTAF)</b> <b>0</b>
--------------------------	--	--------------------------	--



ELEV 1193	TDZE 1177
-----------	-----------



CATEGORY	A	B	C	D
LPV DA	1427-1	250 (300-1)		NA
LNAV/VNAV DA	1473-1½	296 (300-1½)		NA
LNAV MDA	1540-1	363 (400-1)	1540-1½ 363 (400-1½)	NA
CIRCLING	1740-1 547 (600-1)	1840-1 647 (700-1)	1840-1¾ 647 (700-1¾)	NA

SC-1, 02 DEC 2021 to 30 DEC 2021

SC-1, 02 DEC 2021 to 30 DEC 2021

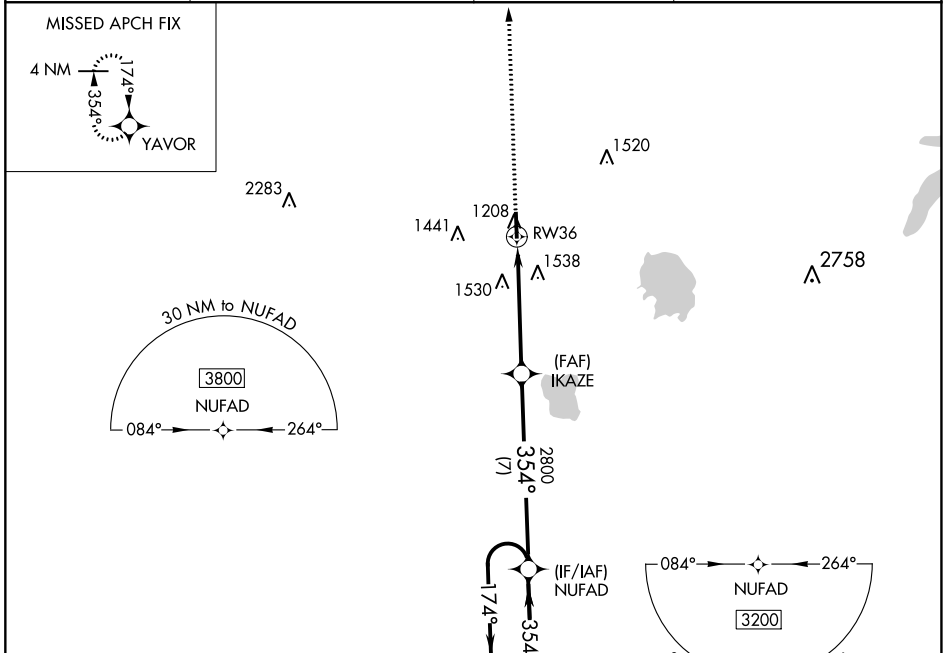
APP CRS <b>354°</b>	Rwy Idg <b>5001</b>
	TDZE <b>1193</b>
	Apt Elev <b>1193</b>

# RNAV (GPS) RWY 36

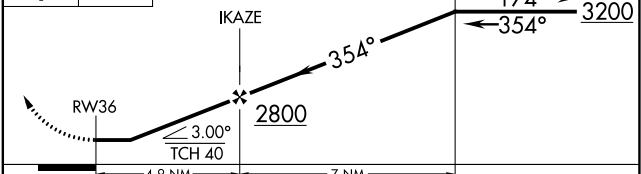
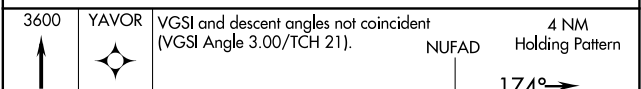
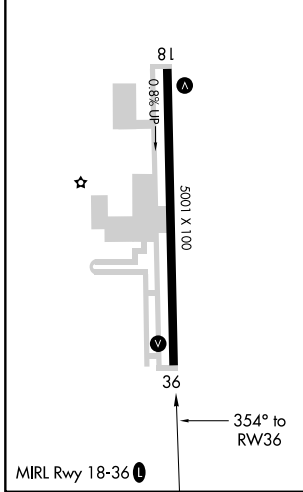
SUNDANCE (HSD)

**⚠** Rwy 36 helicopter visibility reduction below 1 SM NA. DME/DME RNP-0.3 NA. Straight-in Rwy 36 NA at night, Circling Rwy 36 NA at night. **MISSED APPROACH:** Climb to 3600 direct YAVOR and hold.

AWOS-3 <b>120.975</b>	OKE CITY APP CON <b>124.6 266.8</b>	CLNC DEL <b>123.7</b>	UNICOM <b>122.7 (CTAF)</b>
--------------------------	--	--------------------------	-------------------------------



ELEV 1193	TDZE 1193
-----------	-----------



CATEGORY	A	B	C	D
LNAV MDA	1780-1	587 (600-1)	1780-1 <sup>3</sup> / <sub>4</sub> 587 (600-1 <sup>3</sup> / <sub>4</sub> )	NA
CIRCLING	1780-1 587 (600-1)	1840-1 647 (700-1)	1840-1 <sup>3</sup> / <sub>4</sub> 647 (700-1 <sup>3</sup> / <sub>4</sub> )	NA

SC-1, 02 DEC 2021 to 30 DEC 2021

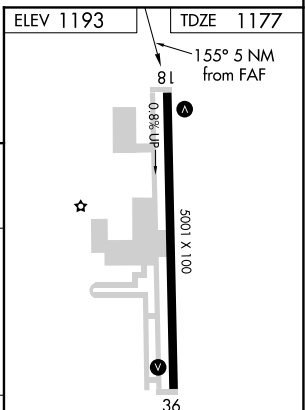
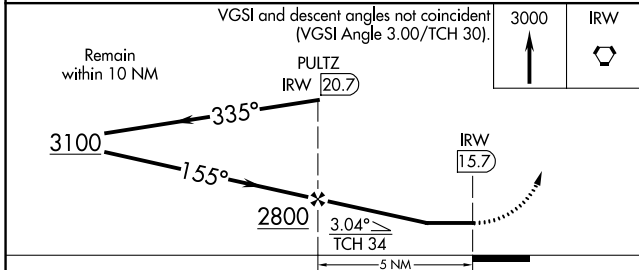
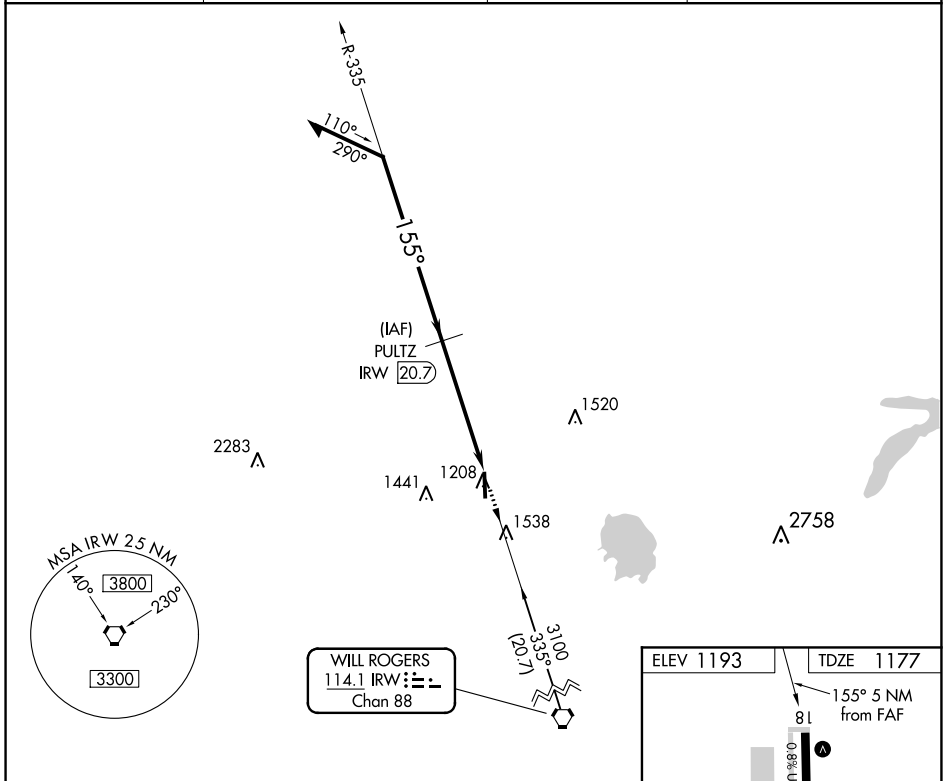
SC-1, 02 DEC 2021 to 30 DEC 2021

VORTAC IRW <b>114.1</b> Chan <b>88</b>	APP CRS <b>155°</b>	Rwy Idg <b>5001</b> TDZE <b>1177</b> Apt Elev <b>1193</b>
--	------------------------	---

# VOR RWY 18

SUNDANCE (HSD)

DME required.		MISSED APPROACH: Climb to 3000 direct IRW VORTAC.	
Circling Rwy 36 NA at night.		AWOS-3 <b>120.975</b>	OKE CITY APP CON <b>124.6 266.8</b>
		CLNC DEL <b>123.7</b>	UNICOM <b>122.7</b> (CTAF)



CATEGORY	A	B	C	D
S-18	1700-1	523 (600-1)	1700-1½ 523 (600-1½)	NA
CIRCLING	1740-1 547 (600-1)	1840-1 647 (700-1)	1840-1¾ 647 (700-1¾)	NA

MIRL Rwy 18-36

SC-1, 02 DEC 2021 to 30 DEC 2021

SC-1, 02 DEC 2021 to 30 DEC 2021