

LOC/DME I-HZR <b>111.9</b> Chan <b>56</b>	APP CRS <b>004°</b>	Rwy Idg TDZE Apt Elev	<b>5003</b> <b>36</b> <b>39</b>
---	------------------------	-----------------------------	---------------------------------------

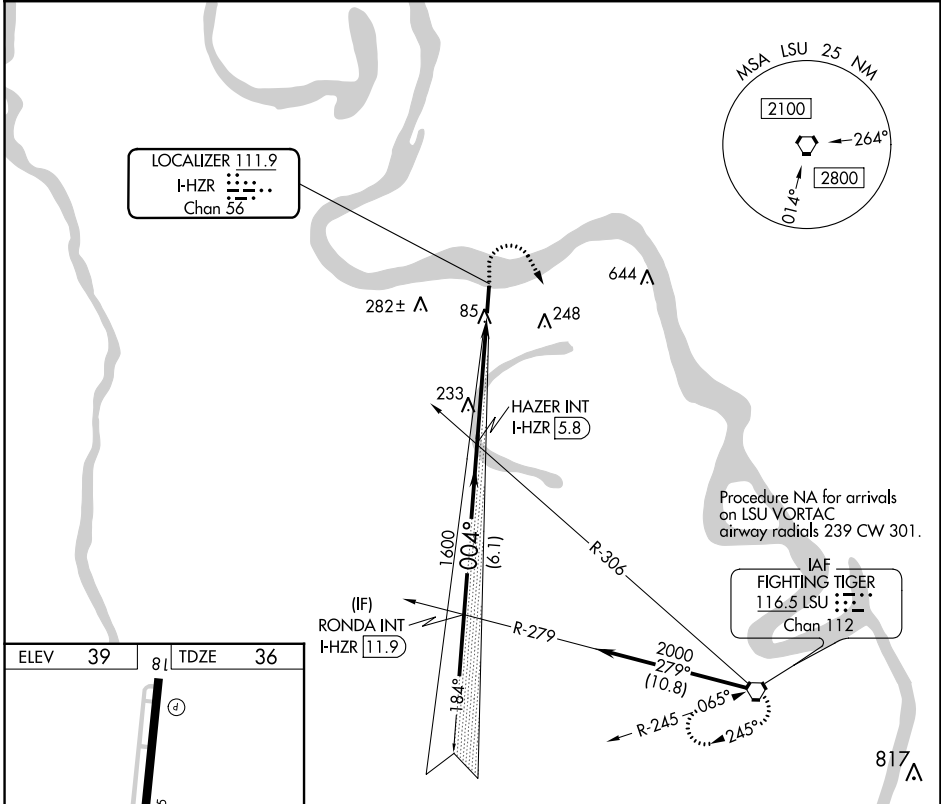
# LOC RWY 36

FALSE RIVER RGNL (HZR)

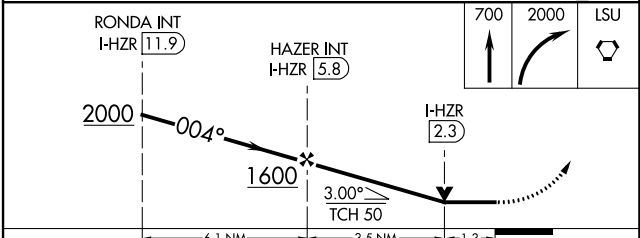
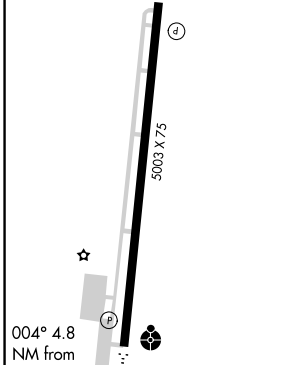
**NA** When local altimeter setting not received, use Baton Rouge altimeter setting and increase all MDA 60 feet; increase S-36 Cat C/D visibility to 1½ SM and Circling Cat C to 1¼ SM.

**ODALS** MISSED APPROACH: Climb to 700 then climbing right turn to 2000 direct LSU VORTAC and hold.

AWOS-3PT <b>121.250</b>	BATON ROUGE APP CON★ <b>120.3 278.3</b>	UNICOM <b>122.8 (CTAF) 0</b>
----------------------------	--	---------------------------------



ELEV 39	81	TDZE 36
---------	----	---------



CATEGORY	A	B	C	D
S-36	500-¾ 464 (500-¾)		500-1¼ 464 (500-1¼)	
<input checked="" type="checkbox"/> CIRCLING	500-1 461 (500-1)	520-1 481 (500-1)	600-1½ 561 (600-1½)	600-2 561 (600-2)

Knots	60	90	120	150	180
Min:Sec	4:48	3:12	2:24	1:55	1:36

SC-4, 22 FEB 2024 to 21 MAR 2024

SC-4, 22 FEB 2024 to 21 MAR 2024

WAAS CH <b>86942</b> <b>W18A</b>	APP CRS <b>184°</b>	Rwy Idg TDZE Apt Elev	<b>5003</b> <b>39</b> <b>39</b>
--	------------------------	-----------------------------	---------------------------------------

# RNAV (GPS) RWY 18

FALSE RIVER RGNL (HZR)

RNP APCH.

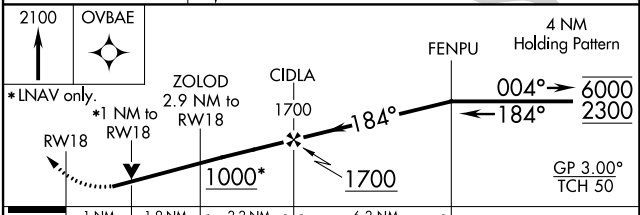
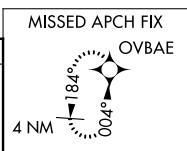
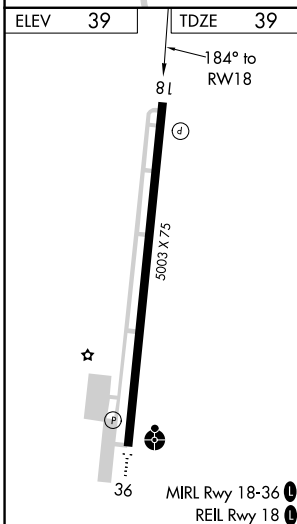
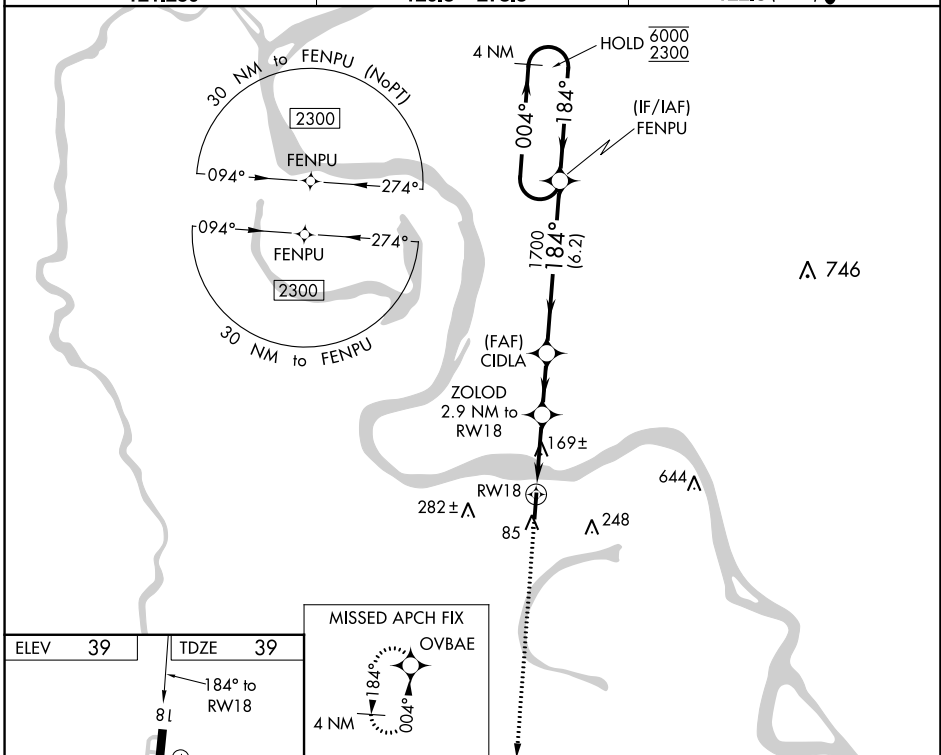
▼ Rwy 18 helicopter visibility reduction below 3/4 SM NA. When local altimeter setting not received, use Baton Rouge altimeter setting and increase all DA 51 feet and all visibility 1/8 SM; increase all MDA 60 feet, and LNAV Cat C/D and Circling Cat C visibility 1/4 SM. For uncompensated Baro-VNAV systems, LNAV/VNAV NA below -15°C or above 54°C. Baro-VNAV and VDP NA when using Baton Rouge altimeter setting.

MISSED APPROACH:  
Climb to 2100 direct  
OVBAE and hold.

AWOS-3PT  
**121.250**

BATON ROUGE APP CON\*  
**120.3 278.3**

UNICOM  
**122.8 (CTAF) 0**



CATEGORY	A	B	C	D
LPV DA	347-7/8		308 (400-7/8)	
LNAV/VNAV DA	317-7/8		278 (300-7/8)	
LNAV MDA	420-1	381 (400-1)	420-1 1/8	381 (400-1 1/8)
<b>CIRCLING</b>	480-1 441 (500-1)	520-1 481 (500-1)	600-1 1/2 561 (600-1 1/2)	600-2 561 (600-2)

SC-4, 22 FEB 2024 to 21 MAR 2024

SC-4, 22 FEB 2024 to 21 MAR 2024

WAAS CH <b>42607</b> <b>W36A</b>	APP CRS <b>004°</b>	Rwy Idg TDZE Apt Elev	<b>5003</b> <b>36</b> <b>39</b>
--	------------------------	-----------------------------	---------------------------------------

# RNAV (GPS) RWY 36

FALSE RIVER RGNL (HZR)

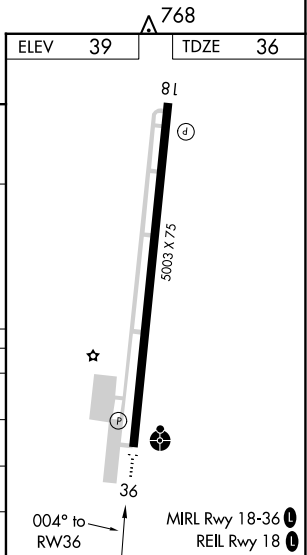
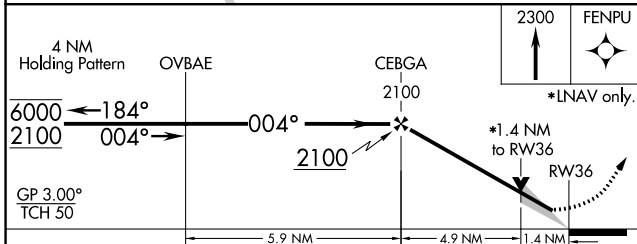
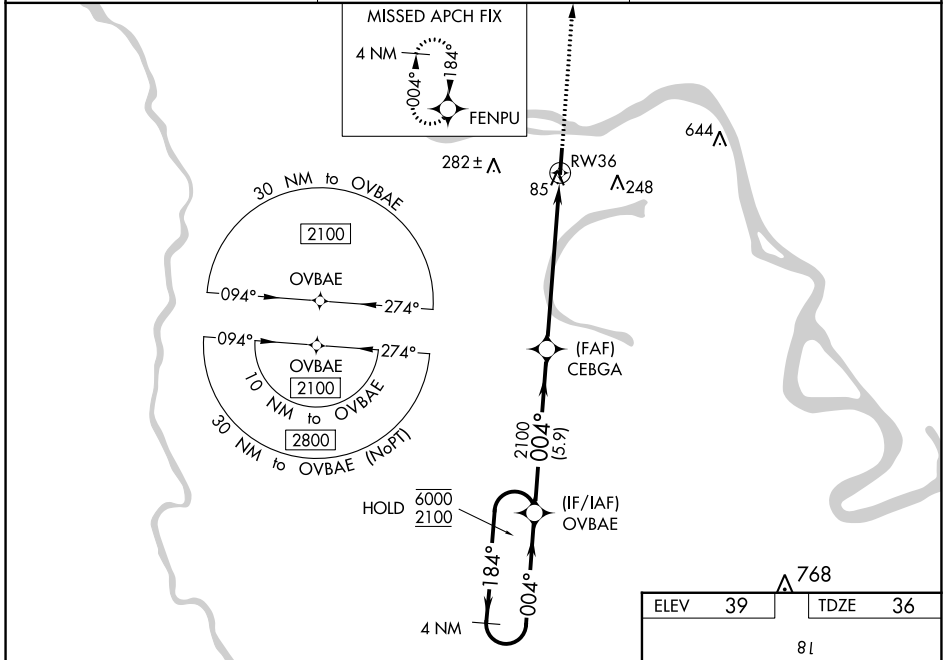
**RNP APCH.**

▼ For uncompensated Baro-VNAV systems, LNAV/VNAV NA below -15°C or above 54°C. Baro-VNAV and VDP NA when using Baton Rouge altimeter setting. When local altimeter setting not received, use Baton Rouge altimeter setting and increase all DA 51 feet and all visibility 1/8 SM; increase all MDA 60 feet, and LNAV Cat C/D visibility 1/8 SM and Circling Cat C visibility 1/4 SM. For inop ALS, increase LNAV/VNAV Cats A/B visibility to 7/8 mile. For inop ALS when using Baton Rouge altimeter setting, increase LNAV/VNAV visibility to 1 SM and LNAV Cat C/D visibility to 1 1/8 SM.

ODALS

MISSED APPROACH: Climb to 2300 direct FENPU and hold.

AWOS-3PT <b>121.250</b>	BATON ROUGE APP CON* <b>120.3 278.3</b>	UNICOM <b>122.8 (CTAF)</b>
----------------------------	--	-------------------------------



CATEGORY	A	B	C	D
LPV DA		286-3/4	250 (300-3/4)	
LNAV/VNAV DA		307-3/4	271 (300-3/4)	
LNAV MDA	520-3/4 484 (500-3/4)	520-1 484 (500-1)	520-1 1/4	484 (500-1 1/4)
<b>C</b> CIRCLING	520-1	481 (600-1)	600-1 1/2 561 (600-1 1/2)	600-2 561 (600-2)

SC-4, 22 FEB 2024 to 21 MAR 2024

SC-4, 22 FEB 2024 to 21 MAR 2024