

CAVLR FOUR ARRIVAL (RNAV)

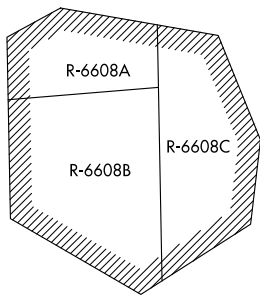
AL-5100 (FAA)

WASHINGTON DULLES INTL (IAD)
WASHINGTON, DC

POTOMAC APP CON
128.525 306.925
D-ATIS
134.85

COINZ
Landing North Rws 1L/C/R, 30:
Expect RADAR vectors to final
approach course after COINZ.

6000



MIXNN
Landing South Rws 19L/C/R:
Expect RADAR vectors to final
approach course after MIXNN.

- NOTE: RADAR required.
- NOTE: RNAV 1.
- NOTE: DME/DME/IRU or GPS required.
- NOTE: Turbojet aircraft only.
- NOTE: ARTCC will issue landing direction assignment (North or South) and Potomac TRACON will issue runway assignments.

NOTE: Chart not to scale.

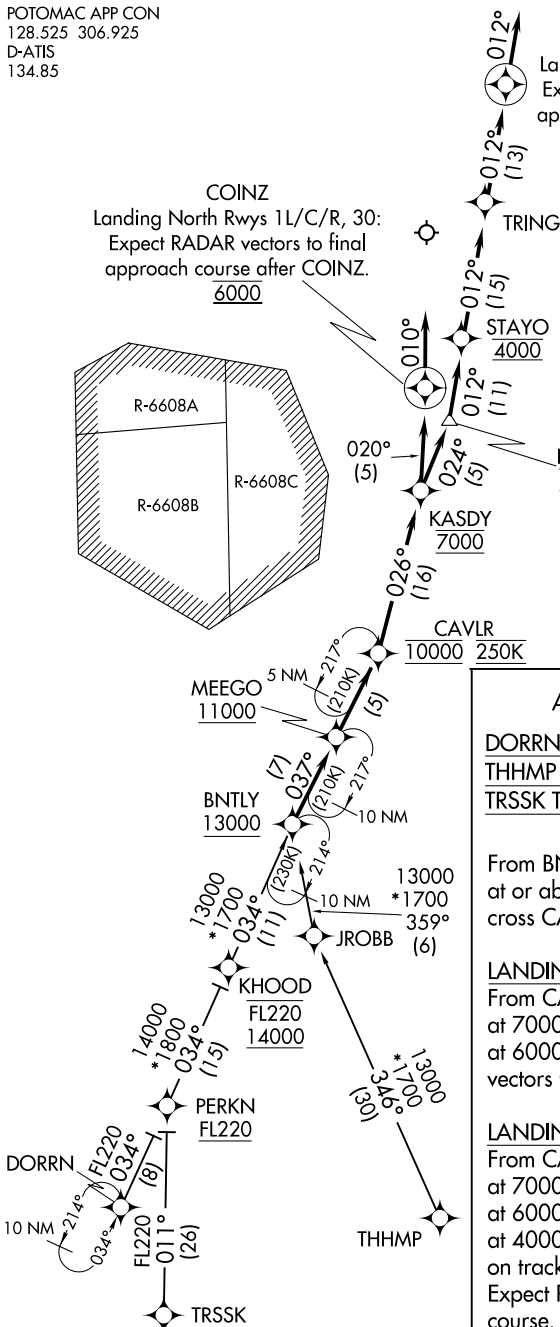
ARRIVAL ROUTE DESCRIPTION

DORRN TRANSITION (DORRN.CAVLR4)
THHMP TRANSITION (THHMP.CAVLR4)
TRSSK TRANSITION (TRSSK.CAVLR4)

From BNTLY on track 037° to cross MEEGO at or above 11000, then on track 037° to cross CAVLR at 10000 and at 250K.

LANDING RUNWAYS 1L/C/R, 30:
From CAVLR on track 026° to cross KASDY at 7000, then on track 024° to cross BARIN at 6000, then on track 012° to cross STAYO at 4000, then on track 012° to TRING, then on track 012° to MIXNN, then on track 012°.

LANDING RUNWAYS 19L/C/R:
From CAVLR on track 026° to cross KASDY at 7000, then on track 024° to cross BARIN at 6000, then on track 012° to cross STAYO at 4000, then on track 012° to TRING, then on track 012° to MIXNN, then on track 012°.



CAVLR FOUR ARRIVAL (RNAV)

NE-3, 22 FEB 2024 to 21 MAR 2024

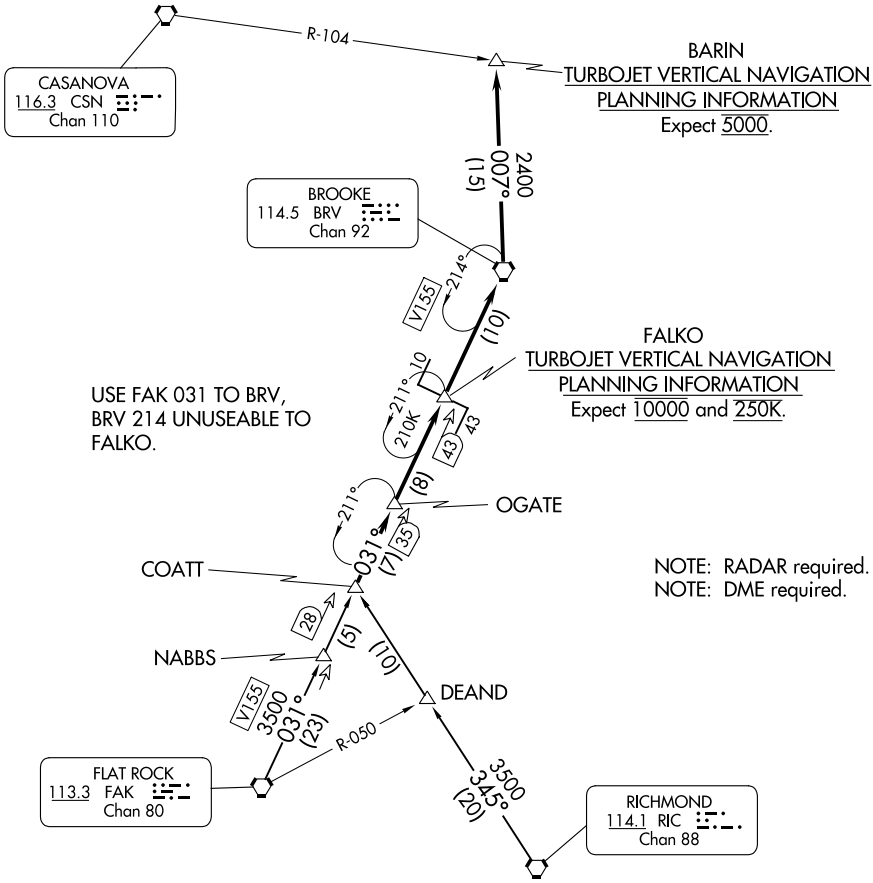
NE-3, 22 FEB 2024 to 21 MAR 2024

COATT FIVE ARRIVAL

POTOMAC APP CON
128.525 306.925
D-ATIS
134.85



ARMEL
113.5
AML
Chan 82



USE FAK 031 TO BRV,
BRV 214 UNUSEABLE TO
FALCO.

FALCO
TURBOJET VERTICAL NAVIGATION
PLANNING INFORMATION
Expect 10000 and 2500.

NOTE: RADAR required.
NOTE: DME required.

NOTE: Chart not to scale.

FLAT ROCK TRANSITION (FAK.COATT5): From over FAK VORTAC on FAK R-031 to COATT. Thence

RICHMOND TRANSITION (RIC.COATT5): From over RIC VORTAC on RIC R-345 to COATT. Thence

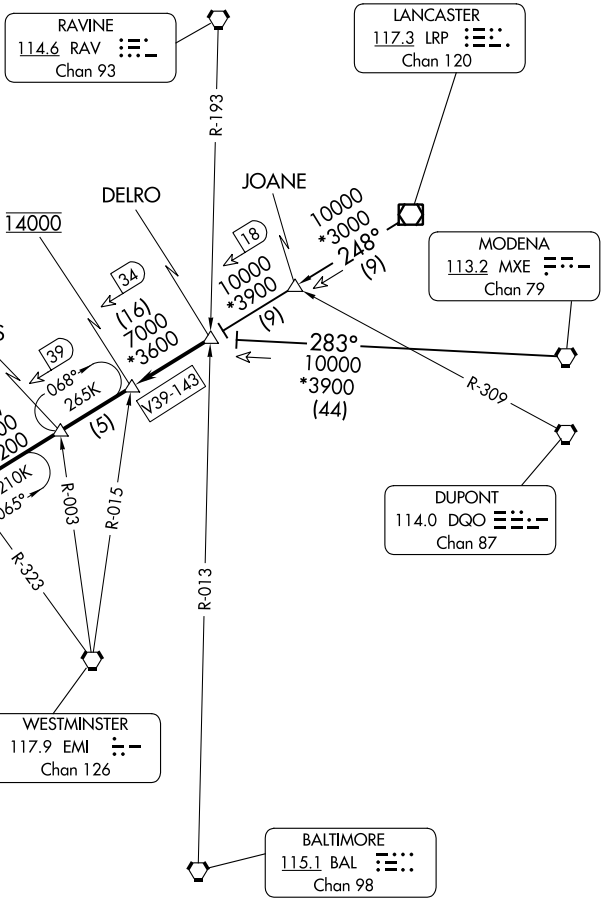
. . . . From over COATT on FAK R-031 to BRV VORTAC, then on BRV R-007 to BARIN. Expect radar vectors to final approach course after BARIN.

NE-3, 22 FEB 2024 to 21 MAR 2024

NE-3, 22 FEB 2024 to 21 MAR 2024

DELRO FIVE ARRIVAL

POTOMAC APP CON
133.0 288.35
D-ATIS
134.85
DULLES TOWER
120.1 317.8 (Rwy 1R/19L)
120.25 348.6 (Rwy 1C/19C)
134.425 348.6 (1L/19R, 12/30)



NE-3, 22 FEB 2024 to 21 MAR 2024

NE-3, 22 FEB 2024 to 21 MAR 2024

NOTE: Chart not to scale.

NOTE: RADAR required.
NOTE: For aircraft capable of 180K or greater.

ARRIVAL ROUTE DESCRIPTION

LANCASTER TRANSITION (LRP.DELRO5): From over LRP VOR/DME on LRP R-248 to DELRO. Thence. . .

MODENA TRANSITION (MXE.DELRO5): From over MXE VORTAC on MXE R-283 to DELRO. Thence. . .

. . . From DELRO on LRP R-248 to LIRCH, then on LRP R-248 to BINNS, then on LRP R-248 to HYPER, then on FDK R-031 to FDK VOR, then on heading 190° or as assigned by ATC. Expect RADAR vectors to final approach course.

DOCCS THREE ARRIVAL
(DOCCS, DOCCS3) 25APR19

(DOCCS, DOCCS3) 24025
DOCCS THREE ARRIVAL

AL-5100 (FAA)

WASHINGTON, DC

POTOMAC APP CON
120.45 306.925
IAD D-ATIS
134.85
JYO AWOS-3
125.225

KESSEL
110.8 ESL
Chan 45

MARTINSBURG
112.1 MRB
Chan 58

FREDERICK
109.0 FDK
Chan 58

LINDEN
114.3 LDN
Chan 90

CHARLESTON
117.4 HVQ
Chan 121

GIBBZ
Expect 6000.

LEESBURG
EXEC

UDIYU

WASHINGTON
DULLES INTL

ARMEL
113.5 AML
Chan 82

LINDEN
114.3 LDN
Chan 90

5200
078°
(22)

SUNYJ

SIYOB

FINKS

SEALZ

DILNN

17000
095°
(96)

BECKLEY
117.7 BKW
Chan 124

MONTEBELLO
115.3 MOL
Chan 100

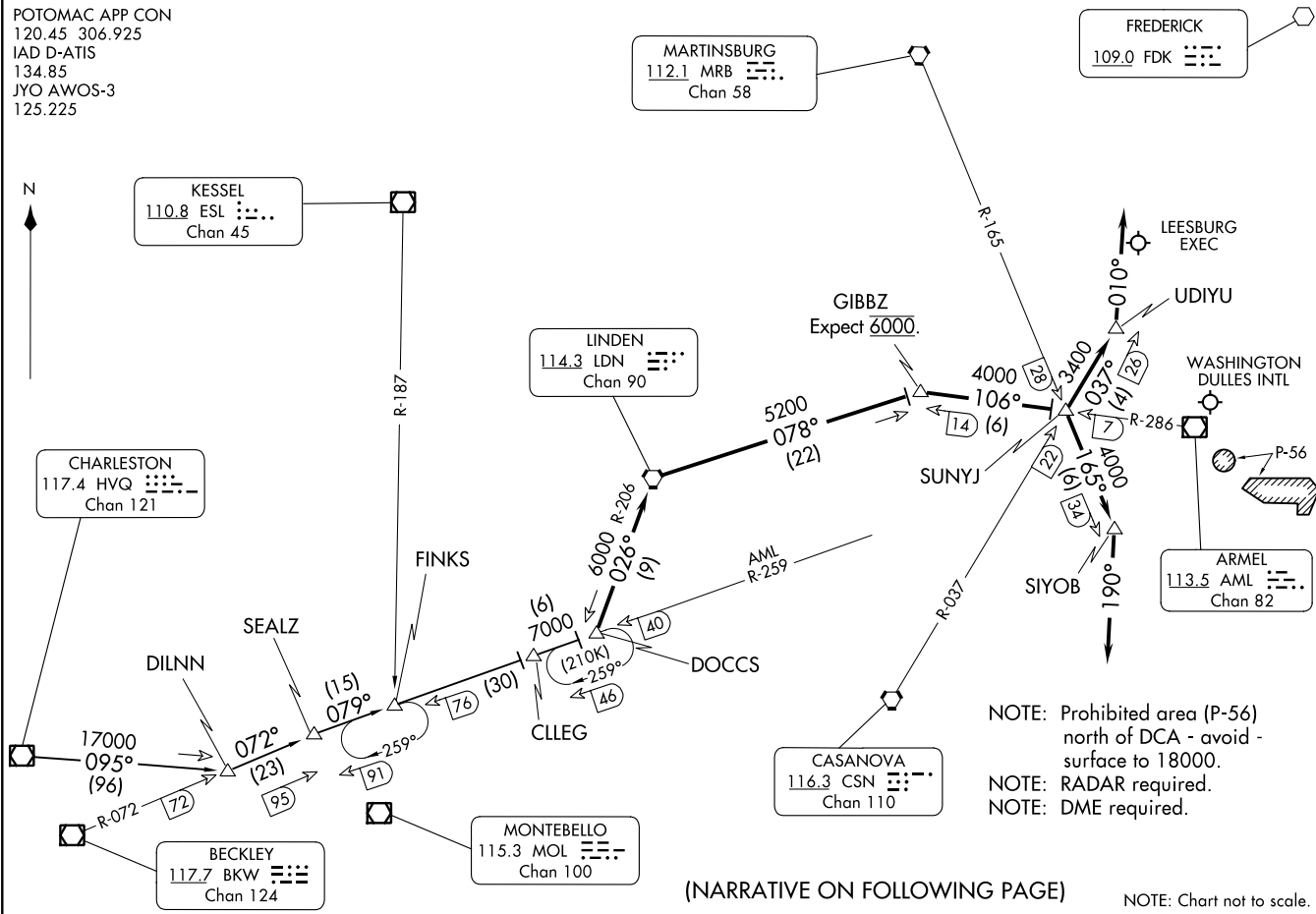
CASANOVA
116.3 CSN
Chan 110

NOTE: Prohibited area (P-56)
north of DCA - avoid -
surface to 18000.
NOTE: RADAR required.
NOTE: DME required.

(NARRATIVE ON FOLLOWING PAGE)

NOTE: Chart not to scale.

WASHINGTON, DC



ARRIVAL ROUTE DESCRIPTION

CHARLESTON TRANSITION (HVQ.DOCCS3): From over HVQ VOR/DME on HVQ R-095 to DILNN, then on BKW R-072 to SEALZ, then on AML R-259 to DOCCS. Thence....

LANDING IAD RUNWAYS 1C, 1L, 1R, 30: From over DOCCS on LDN VORTAC R-206 to LDN VORTAC, then on LDN VORTAC R-078 to GIBBZ, then on AML VOR/DME R-286 to SUNYJ, then on MRB VORTAC R-165 to SIYOB, then fly heading 190°, expect radar vectors to final approach course.

LANDING IAD RUNWAYS 19C, 19L, 19R: From over DOCCS on LDN VORTAC R-206 to LDN VORTAC, then on LDN VORTAC R-078 to GIBBZ, then on AML VOR/DME R-286 to SUNYJ, then on CSN VORTAC R-037 to UDIYU, then fly heading 010°, expect radar vectors to final approach course.

LANDING IAD RUNWAY 12: From over DOCCS, expect radar vectors to final approach course.

LANDING JYO: From over DOCCS on LDN VORTAC R-206 to LDN VORTAC, expect radar vectors to final approach course.

NE-3, 22 FEB 2024 to 21 MAR 2024

NE-3, 22 FEB 2024 to 21 MAR 2024

(GIBBZ.GIBBZ4) 31DEC20

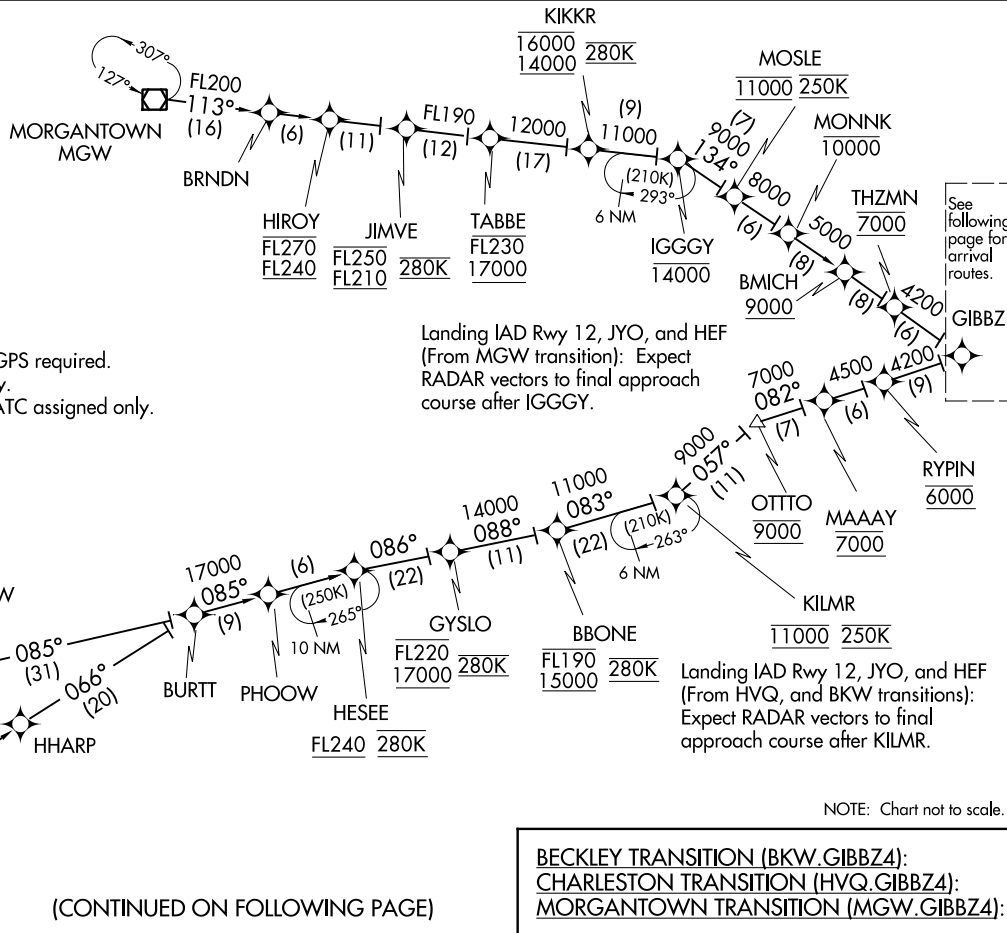
GIBBZ FOUR ARRIVAL (RNAV) Transition Routes

WASHINGTON, DC

POTOMAC APP CON
120.45 306.925
HEF ATIS
125.175
IAD D-ATIS
134.85



- NOTE: RADAR required.
- NOTE: RNAV 1.
- NOTE: DME/DME/IRU or GPS required.
- NOTE: Turbojet aircraft only.
- NOTE: Turboprop aircraft ATC assigned only.



Landing IAD Rwy 12, JYO, and HEF
(From MGW transition): Expect
RADAR vectors to final approach
course after IGGGY.

Landing IAD Rwy 12, JYO, and HEF
(From HVQ, and BKW transitions):
Expect RADAR vectors to final
approach course after KILMR.

See
following
page for
arrival
routes.

(CONTINUED ON FOLLOWING PAGE)

BECKLEY TRANSITION (BKW.GIBBZ4):
CHARLESTON TRANSITION (HVQ.GIBBZ4):
MORGANTOWN TRANSITION (MGW.GIBBZ4):

NOTE: Chart not to scale.

(GIBBZ.GIBBZ4) 20366

AL-5100 (FAA)

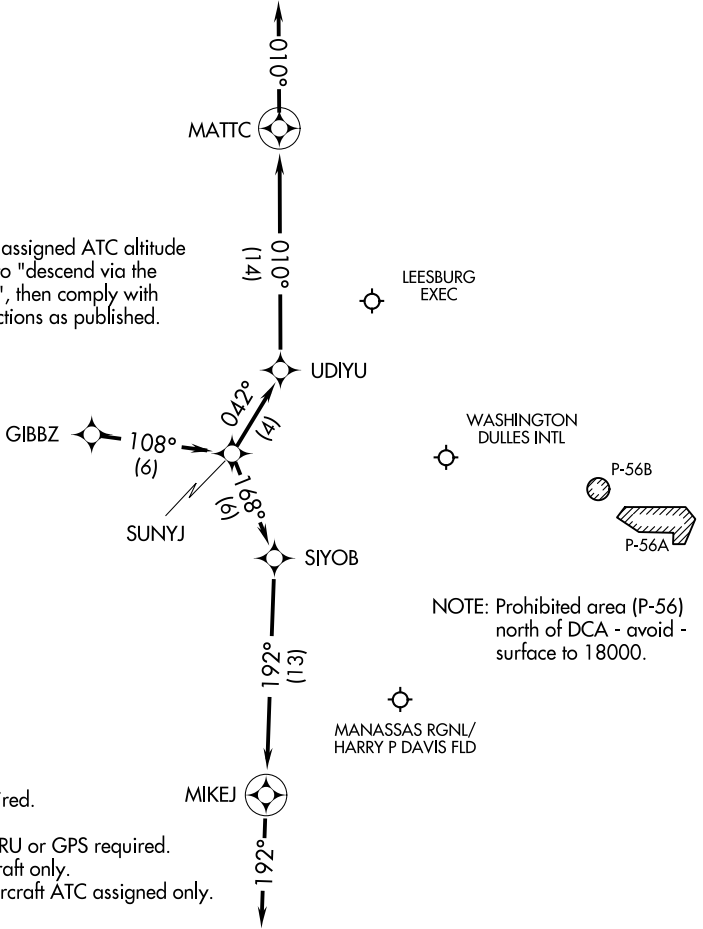
WASHINGTON, DC

GIBBZ FOUR ARRIVAL (RNAV) Arrival Routes

WASHINGTON, DC

POTOMAC APP CON
120.45 306.925
HEF ATIS
125.175
IAD D-ATIS
134.85

NOTE: Maintain last assigned ATC altitude until cleared to "descend via the GIBBZ FOUR", then comply with altitude restrictions as published.



- NOTE: RADAR required.
- NOTE: RNAV 1.
- NOTE: DME/DME/IRU or GPS required.
- NOTE: Turbojet aircraft only.
- NOTE: Turboprop aircraft ATC assigned only.

ARRIVAL ROUTE DESCRIPTION

LANDING RUNWAYS 1L/C/R, 30: From GIBBZ on track 108° to SUNYJ, then on track 168° to SIYOB, then on track 192° to MIKEJ, then on track 192°. Expect radar vectors to final approach course.

LANDING RUNWAYS 19L/C/R: From GIBBZ on track 108° to SUNYJ, then on track 042° to UDIYU, then on track 010° to MATTC, then on track 010°. Expect radar vectors to final approach course.

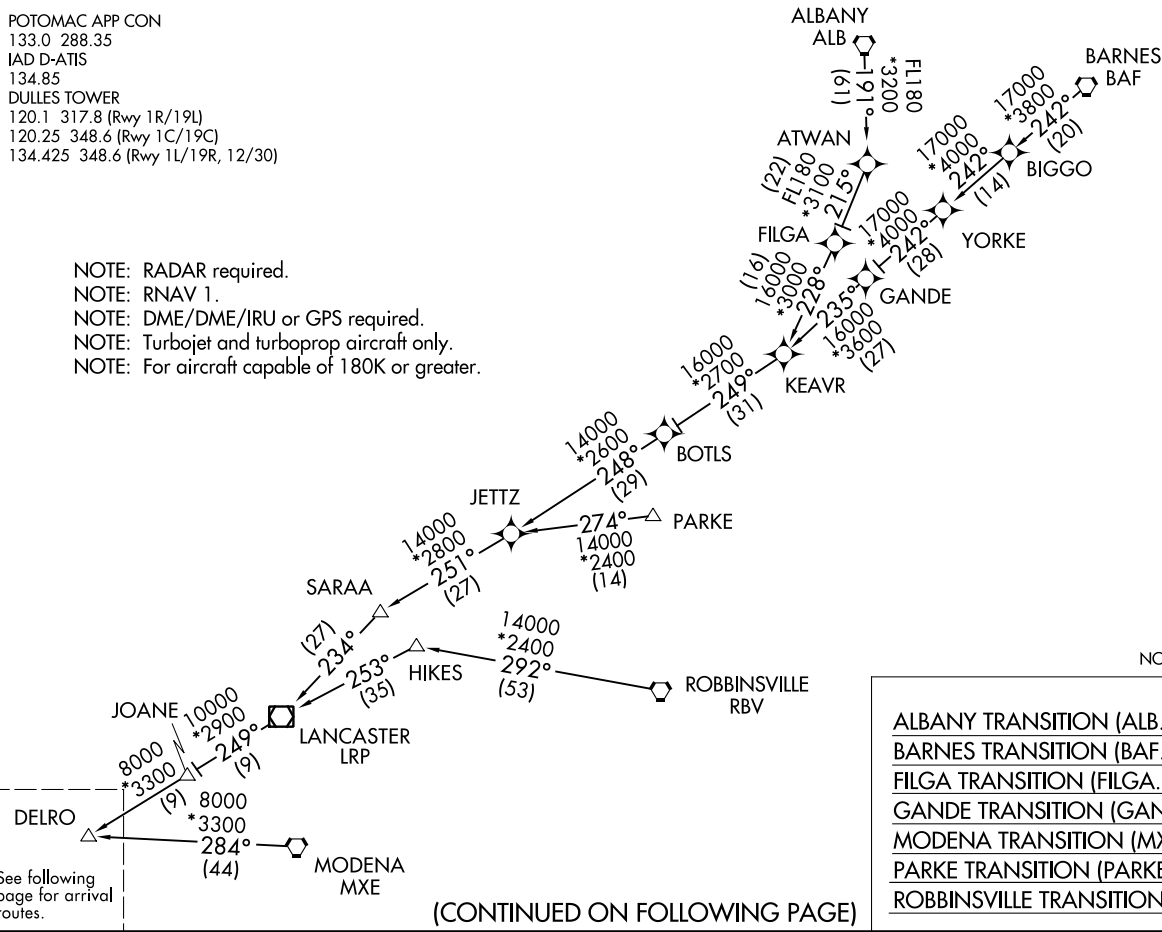
HYPER EIGHT ARRIVAL (RNAV) Transition Routes
(DELRO.HYPER8) 31DEC20

POTOMAC APP CON
133.0 288.35
IAD D-ATIS
134.85
DULLES TOWER
120.1 317.8 (Rwy 1R/19L)
120.25 348.6 (Rwy 1C/19C)
134.425 348.6 (Rwy 1L/19R, 12/30)

NOTE: RADAR required.
NOTE: RNAV 1.
NOTE: DME/DME/IRU or GPS required.
NOTE: Turbojet and turboprop aircraft only.
NOTE: For aircraft capable of 180K or greater.



NOTE: Chart not to scale.



(CONTINUED ON FOLLOWING PAGE)

HYPER EIGHT ARRIVAL (RNAV) Transition Routes
AL-5100 (FAA)
WASHINGTON, DC

(DELRO.HYPER8) 24025

HYPER EIGHT ARRIVAL (RNAV) Arrival Routes

WASHINGTON, DC

POTOMAC APP CON

133.0 288.35

IAD D-ATIS

134.85

DULLES TOWER

120.1 317.8 (Rwy 1R/19L)

120.25 348.6 (Rwy 1C/19C)

134.425 348.6 (Rwy 1L/19R, 12/30)

NOTE: RADAR required.

NOTE: RNAV 1.

NOTE: DME/DME/IRU or GPS required.

NOTE: Turbojet and turboprop aircraft only.

NOTE: For aircraft capable of 180K or greater.



EASTERN WV RGNL/
SHEPHERD
FLD

WINCHESTER
RGNL

FRONT ROYAL-
WARREN
COUNTY

WARRENTON/
FAUQUIER

CULPEPER
RGNL

MANASSAS RGNL/
HARRY P DAVIS FLD

WASHINGTON
DULLES INTL

STAFFORD
RGNL

SHANNON

QUANTICO
MCAF
(TURNER
FLD)

NOTE: Chart not to scale.

NE-3, 22 FEB 2024 to 21 MAR 2024

NE-3, 22 FEB 2024 to 21 MAR 2024

HYPER EIGHT ARRIVAL (RNAV) Arrival Routes

WASHINGTON, DC

ARRIVAL ROUTE DESCRIPTION

IAD: From DELRO on track 249° to cross LIRCH at 14000, then on track 249° to BINNS, then on track 249° to cross HYPER at 10000 and at 250K.

Landing IAD Rwy 1C/R: From HYPER on track 211° to cross SIGBE at 7000, then on track 189° to cross MOWAT at 5000, then on track 189° to cross HUSEL at 4000, then on track 190° to YACKK, then on track 191° to TICON, then on track 191°. Expect RADAR vectors to final approach course.

Landing IAD Rwy 1L: From HYPER on track 220° to cross CRAIN at 6000, then on track 214° to cross KUKSE at 5000, then on track 191° to ELISN, then on track 191° to MIKEJ, then on track 191°. Expect RADAR vectors to final approach course.

Landing IAD Rwy 19C: From HYPER on track 219° to cross COVUR at 7000, then on track 191° to DIMKE, then on track 191° to cross HOOSR at or above 5000. Expect ILS or LOC Rwy 19C approach.

Landing IAD Rwy 19L: From HYPER on track 216° to cross OOGLE at or below 5000, then on track 217° to cross LITEY at 4000, then on track 191° to cross YYANG at 4000, then on track 191° to cross DADEY at or above 3000. Expect ILS or LOC Rwy 19L approach.

Landing IAD Rwy 19R: From HYPER on track 220° to cross CRAIN at 6000, then on track 220° to cross REXOE at 6000, then on track 191° to cross BEEZY at or above 4000. Expect ILS or LOC Rwy 19R approach.

Landing NYG/CJR/EZF/RMN/HWY/HEF: From DELRO on track 249° to cross LIRCH at 14000, then on track 249° to BINNS, then on track 249° to cross HYPER at 10000 and at 250K, then on track 211° to cross SIGBE at 7000, then on track 189° to cross MOWAT at 5000, then on track 189° to cross HUSEL at 4000, then on track 190° to YACKK, then on track 191° to TICON, then on track 191°. Expect RADAR vectors to final approach course.

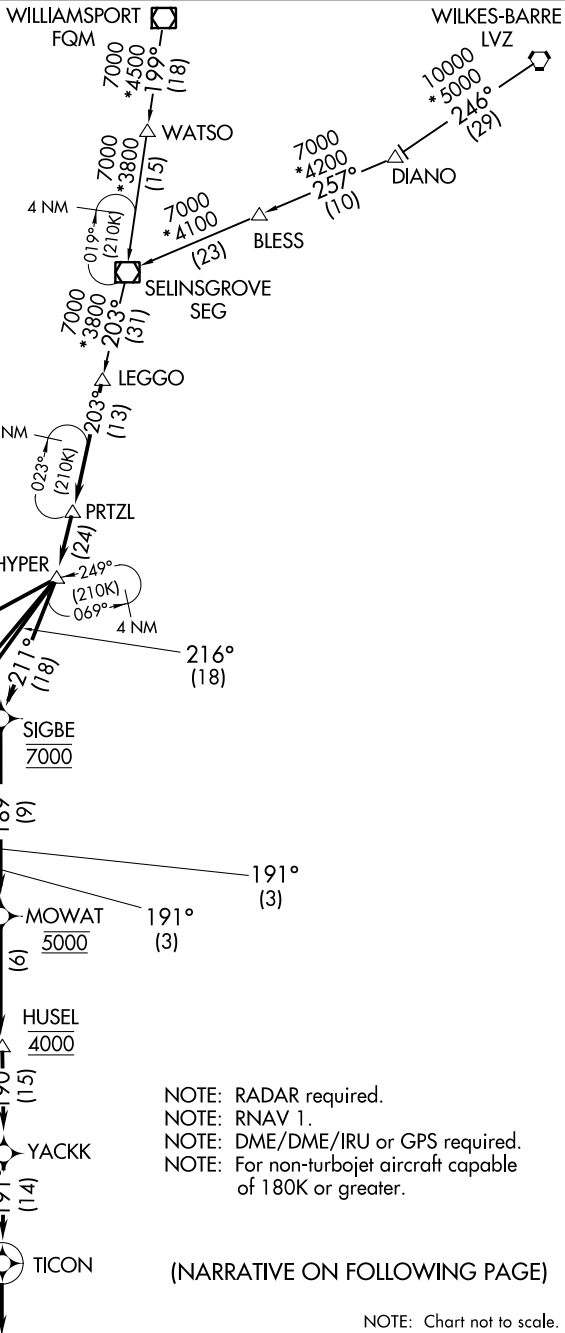
Landing MRB/JYO/FRR/OKV: From DELRO on track 249° to cross LIRCH at 14000, then on track 249° to BINNS, then on track 249° to cross HYPER at 10000 and at 250K, then on track 233° to PHATT. Then on heading 230° or as assigned by ATC. Expect RADAR vectors to final approach course.

NE-3, 22 FEB 2024 to 21 MAR 2024

NE-3, 22 FEB 2024 to 21 MAR 2024

LEGGO SIX ARRIVAL (RNAV)

POTOMAC APP CON
133.0 288.35
D-ATIS
134.85



NE-3, 22 FEB 2024 to 21 MAR 2024

NE-3, 22 FEB 2024 to 21 MAR 2024

NOTE: RADAR required.
 NOTE: RNAV 1.
 NOTE: DME/DME/IRU or GPS required.
 NOTE: For non-turbojet aircraft capable of 180K or greater.

(NARRATIVE ON FOLLOWING PAGE)

NOTE: Chart not to scale.

LEGGO SIX ARRIVAL (RNAV)

LEGGO SIX ARRIVAL (RNAV)

ARRIVAL ROUTE DESCRIPTION

WILKES-BARRE TRANSITION (LVZ.LEGGO6):
WILLIAMSPORT TRANSITION (FQM.LEGGO6):
SELINGSGROVE TRANSITION (SEG.LEGGO6):

From LEGGO on track 203° to PRTZL, then on track 203° to HYPER.

LANDING RWYS 1C/R: From HYPER on track 211° to cross SIGBE at 7000, then on track 189° to cross MOWAT at 5000, then on track 189° to cross HUSEL at 4000, then on track 190° to YACKK, then on track 191° to TICON, then on track 191°. Expect RADAR vectors to final approach course.

LANDING RWY 1L: From HYPER on track 220° to cross CRAIN at 6000, then on track 214° to cross KUKSE at 5000, then on track 191° to ELISN, then on track 191° to MIKEJ, then on track 191°. Expect RADAR vectors to final approach course.

LANDING RWY 19C: From HYPER on track 219° to cross COVUR at 7000, then on track 191° to DIMKE, then on track 191° to cross HOOSR at or above 5000. Expect ILS or LOC to Rwy 19C approach.

LANDING RWY 19L: From HYPER on track 216° to cross OOGLE at or below 5000, then on track 217° to cross LITEY at 4000, then on track 191° to cross YYANG at 4000, then on track 191° to cross DADEY at or above 3000. Expect ILS or LOC to Rwy 19L approach.

LANDING RWY 19R: From HYPER on track 220° to cross CRAIN at 6000, then on track 220° to cross REXOE at 6000, then on track 191° to cross BEEZY at or above 4000. Expect ILS or LOC to Rwy 19R approach.

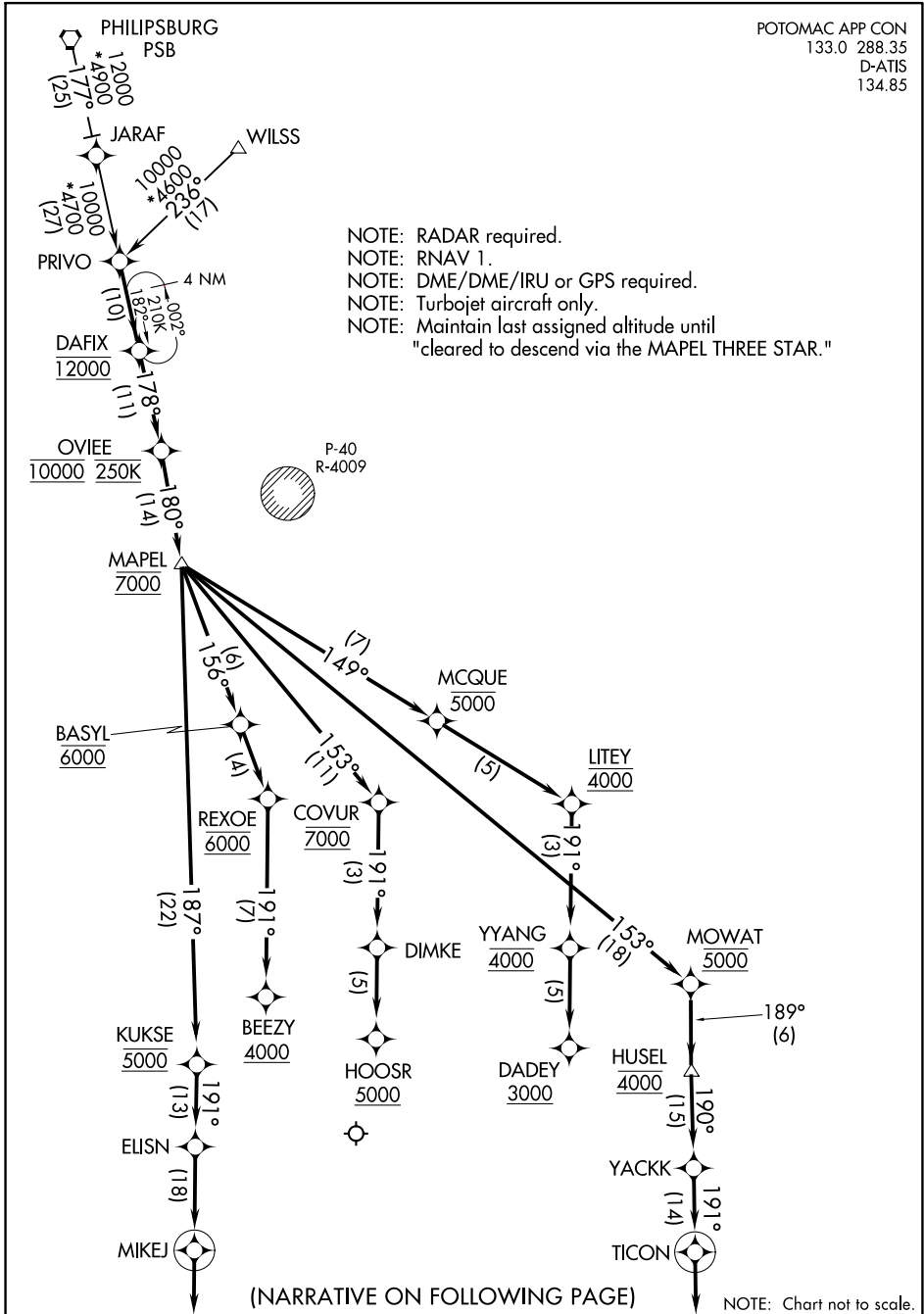
NE-3, 22 FEB 2024 to 21 MAR 2024

NE-3, 22 FEB 2024 to 21 MAR 2024

MAPEL THREE ARRIVAL (RNAV)

POTOMAC APP CON
133.0 288.35
D-ATIS
134.85

- NOTE: RADAR required.
- NOTE: RNAV 1.
- NOTE: DME/DME/IRU or GPS required.
- NOTE: Turbojet aircraft only.
- NOTE: Maintain last assigned altitude until "cleared to descend via the MAPEL THREE STAR."



NE-3, 22 FEB 2024 to 21 MAR 2024

NE-3, 22 FEB 2024 to 21 MAR 2024

MAPEL THREE ARRIVAL (RNAV)

MAPEL THREE ARRIVAL (RNAV)

ARRIVAL ROUTE DESCRIPTION

PHILIPSBURG TRANSITION (PSB.MAPEL3):

WILSS TRANSITION (WILSS.MAPEL3):

From PRIVO on track 177° to cross DAFIX at 12000, then on track 178° to cross OVIEE at 10000 and at 250K, then on track 180° to cross MAPEL at 7000.

LANDING RWYS 1C/R: From MAPEL on track 153° to cross MOWAT at 5000, then on track 189° to cross HUSEL at 4000, then on track 190° to YACKK, then on track 191° to TICON, then on track 191°. Expect RADAR vectors to final approach course.

LANDING RWY 1L: From MAPEL on track 187° to cross KUKSE at 5000, then on track 191° to ELISN, then on track 191° to MIKEJ, then on track 191°. Expect RADAR vectors to final approach course.

LANDING RWY 19C: From MAPEL on track 153° to cross COVUR at 7000, then on track 191° to DIMKE, then on track 191° to cross HOOSR at or above 5000. Expect ILS or LOC Rwy 19C approach.

LANDING RWY 19L: From MAPEL on track 149° to cross MCQUE at or below 5000, then on track 149° to cross LITEY at 4000, then on track 191° to cross YYANG at 4000, then on track 191° to cross DADEY at or above 3000. Expect ILS or LOC Rwy 19L approach.

LANDING RWY 19R: From MAPEL on track 156° to cross BASYL at 6000, then on track 156° to cross REXOE at 6000, then on track 191° to cross BEEZY at or above 4000. Expect ILS or LOC Rwy 19R approach.

NE-3, 22 FEB 2024 to 21 MAR 2024

NE-3, 22 FEB 2024 to 21 MAR 2024

PRIVO THREE ARRIVAL

POTOMAC APP CON
 133.00 288.35
 HEF ATIS
 125.175
 IAD D-ATIS
 134.85
 NYG ATIS ★
 263.15

PHILIPSBURG
 115.5 PSB
 Chan 102

JARAF
 Expect FL180

PRIVO

DAFIX
 Expect 12000

OVIEE
 Expect 10000

HAGERSTOWN
 109.8 HGR

MAPEL
 Expect 7000

EASTERN WV RGNL/
 SHEPHERD FLD

LEESBURG EXEC

WASHINGTON DULLES INTL

ARMEL
 113.5 AML
 Chan 82

MANASSAS RGNL/
 HARRY P DAVIS FLD

NOTE: DME and RADAR required.
 NOTE: Jet aircraft only.

QUANTICO MCAF
 (TURNER FLD)

(NARRATIVE ON FOLLOWING PAGE)

NOTE: Chart not to scale.

PRIVO THREE ARRIVAL

NE-3, 22 FEB 2024 to 21 MAR 2024

NE-3, 22 FEB 2024 to 21 MAR 2024

ARRIVAL ROUTE DESCRIPTION

PHILIPSBURG TRANSITION (PSB.PRIVO3): From over PSB VORTAC on PSB R-177 to PRIVO. Thence....

....from PRIVO on PSB R-177 to DAFIX, then on PSB R-177 to OVIEE, then on AML R-358 to MAPEL. Then on HGR R-141 to TWEAK. Then on heading 190° or as assigned by ATC.

LANDING RWYS 1L/C/R and 30: Expect RADAR vectors to final approach course after TWEAK.

LANDING RWYS 19L/C/R and 12: Expect RADAR vectors to final approach course after MAPEL.

LANDING KHEF and KNYG: Expect RADAR vectors to destination airport after TWEAK.

LANDING KMRB and KJYO: Expect RADAR vectors to destination airport after MAPEL.

NE-3, 22 FEB 2024 to 21 MAR 2024

NE-3, 22 FEB 2024 to 21 MAR 2024

SELINGSGROVE SIX ARRIVAL

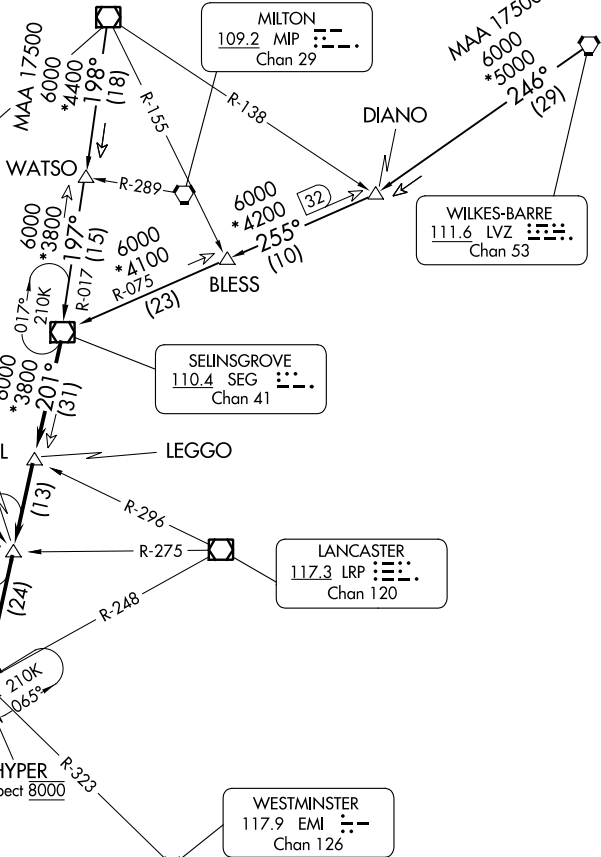
POTOMAC APP CON
133.0 288.35
D-ATIS
134.85
DULLES TOWER
120.1 317.8 (Rwy 1R/19L)
120.25 348.6 (Rwy 1C/19C)
134.425 348.6 (1L/19R, 12/30)

WILLIAMSPORT
114.4 FQM Chan 91

PHILIPSBURG
115.5 PSB Chan 102

MARTINSBURG
112.1 MRB Chan 58

FREDERICK
109.0 (M) FDK



NOTE: Chart not to scale.

ARRIVAL ROUTE DESCRIPTION

WILKES-BARRE TRANSITION (LVZ.SEG6):

From over LVZ VORTAC on LVZ R-246 and SEG R-075 to SEG VOR/DME. Thence....

WILLIAMSPORT TRANSITION (FQM.SEG6):

From over FQM VOR/DME on FQM R-198 and SEG R-017 to SEG VOR/DME. Thence....

....From SEG VOR/DME on SEG R-201 to LEGGO, then on SEG R-201 to PRTZL, then on SEG R-201 to HYPER, then on FDK R-031 to FDK VOR, then on heading 190° or as assigned by ATC. Expect RADAR vectors to final approach course.

SELINGSGROVE SIX ARRIVAL

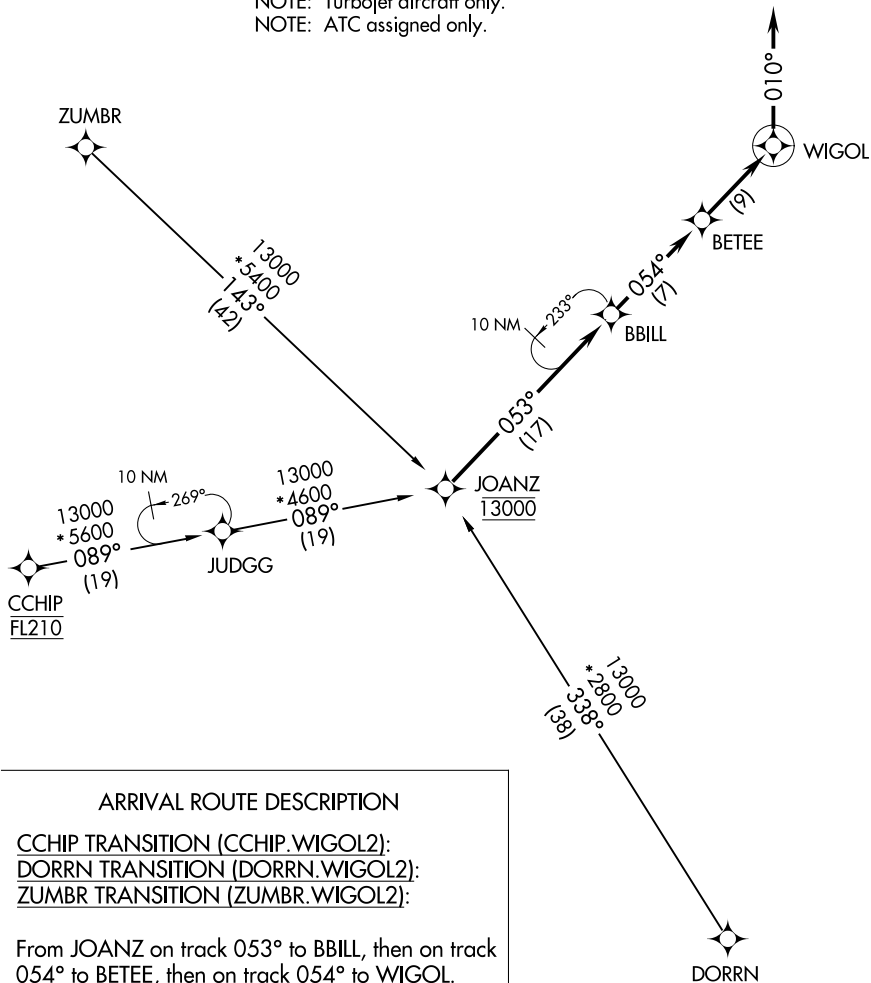
NE-3, 22 FEB 2024 to 21 MAR 2024

NE-3, 22 FEB 2024 to 21 MAR 2024

WIGOL TWO ARRIVAL (RNAV)

POTOMAC APP CON
132.85 323.125
D-ATIS
134.85

NOTE: RADAR required.
NOTE: RNAV 1.
NOTE: DME/DME/IRU or GPS required.
NOTE: Turbojet aircraft only.
NOTE: ATC assigned only.



ARRIVAL ROUTE DESCRIPTION

CCHIP TRANSITION (CCHIP.WIGOL2):
DORRN TRANSITION (DORRN.WIGOL2):
ZUMBR TRANSITION (ZUMBR.WIGOL2):

From JOANZ on track 053° to BBILL, then on track 054° to BETEE, then on track 054° to WIGOL.

Landing Rwys 1L/C/R, 19L/C/R, 30: From WIGOL on heading 010°. Expect radar vectors to final approach course.

NOTE: Chart not to scale.

NE-3, 22 FEB 2024 to 21 MAR 2024

NE-3, 22 FEB 2024 to 21 MAR 2024