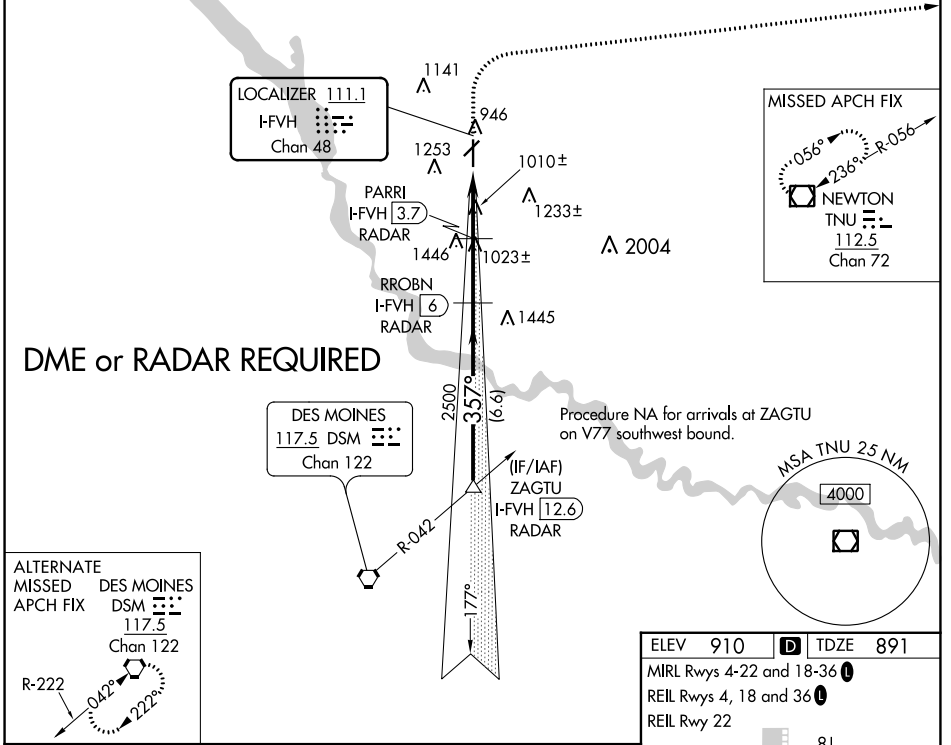


LOC/DME I-FVH 111.1 Chan 48	APP CRS 357°	Rwy Idg TDZE Apt Elev	5500 891 910
--	------------------------	-----------------------------	---

ILS or LOC RWY 36

ANKENY RGNL (IKV)

<p>NA Circling Rwy 22 NA at night. DME or RADAR required.</p>		<p>MISSED APPROACH: Climb to 2000 then climbing right turn to 4000 direct TNU VOR/DME and hold.</p>	
AWOS-3 119.175	DES MOINES APP CON 123.9 307.15	CLNC DEL 126.65	UNICOM 122.9 (CTAF)



ZAGTU I-FVH 12.6 RADAR	RROBN I-FVH 6 RADAR	PARRI I-FVH 3.7 RADAR	*I-FVH 2.1	I-FVH 1.1
3000	2500	2500	2000	4000
GS 3.00° TCH 52	357°	*1760	*LOC only.	TNU
6.6 NM	2.3 NM	1.6 NM	1 NM	
CATEGORY	A	B	C	D
S-ILS 36		1091-3/4	200 (200-3/4)	
S-LOC 36		1260-1	369 (400-1)	
C CIRCLING	1560-1	650 (700-1)	1560-1 3/4 650 (700-1 3/4)	1760-2 3/4 850 (900-2 3/4)

ELEV 910	D TDZE 891
MRL Rwy 4-22 and 18-36	
REIL Rwy 4, 18 and 36	
REIL Rwy 22	
FAF to MAP 4.9 NM	
Knots	60 90 120 150 180
Min:Sec	4:54 3:16 2:27 1:58 1:38

NC-3, 18 MAY 2023 to 15 JUN 2023

NC-3, 18 MAY 2023 to 15 JUN 2023

WAAS CH 82720 W18A	APP CRS 177°	Rwy Idg TDZE Apt Elev	5500 903 910
--	------------------------	-----------------------------	---

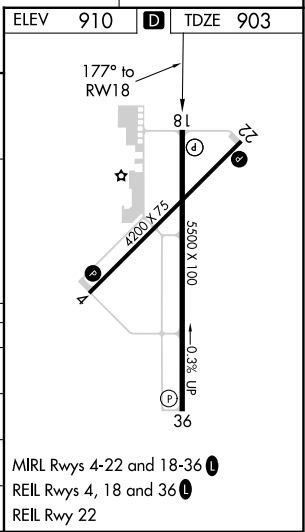
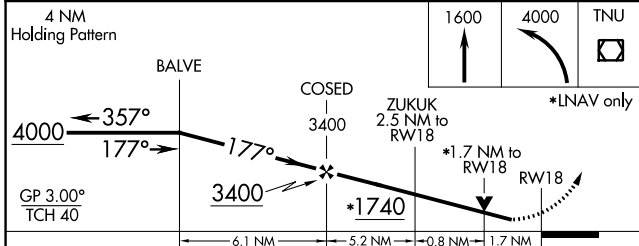
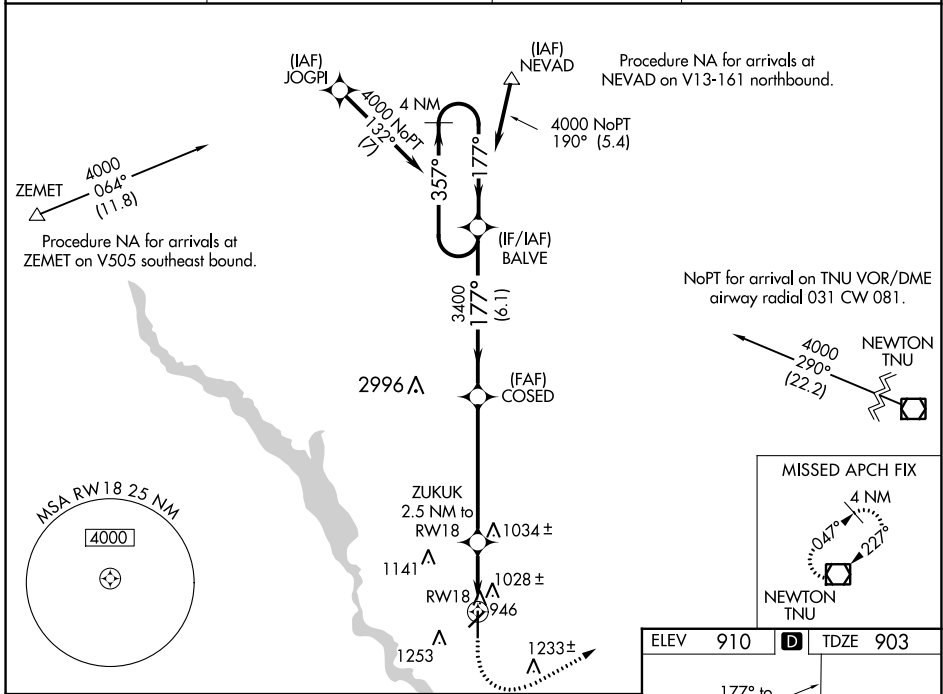
RNAV (GPS) RWY 18

ANKENY RGNL (IKV)

⚠ For uncompensated Baro-VNAV systems, LNAV/VNAV NA below -21° C (-5°F) or above 54°C (130°F). Circling Rwy 22 NA at night. Rwy 18 helicopter visibility reduction below ¾ SM NA. DME/DME RNP-0.3 NA.

MISSED APPROACH: Climb to 1600 then climbing left turn to 4000 direct TNU VOR/DME and hold.

AWOS-3 119.175	DES MOINES APP CON 123.9 307.15	CLNC DEL 126.65	UNICOM 122.9 (CTAF)
--------------------------	---	---------------------------	-------------------------------



CATEGORY	A	B	C	D
LPV DA		1153-7/8	250 (300-7/8)	
LNAV/VNAV DA		1354-1 1/2	451 (500-1 1/2)	
LNAV MDA	1480-1	577 (600-1)	1480-1 5/8	577 (600-1 5/8)
C CIRCLING	1560-1	650 (700-1)	1560-1 3/4	1760-2 3/4
			650 (700-1 3/4)	850 (900-2 3/4)

NC-3, 18 MAY 2023 to 15 JUN 2023

NC-3, 18 MAY 2023 to 15 JUN 2023

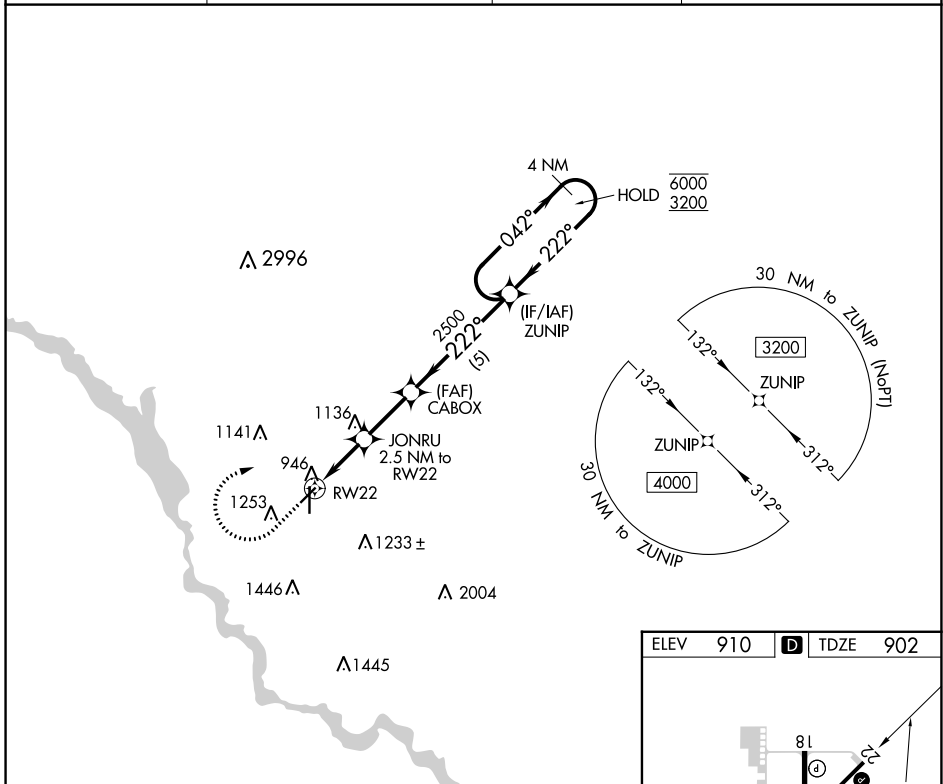
APP CRS 222°	Rwy Idg TDZE Apt Elev	4200 902 910
------------------------	-----------------------------	---

RNAV (GPS) RWY 22

ANKENY RGNL (IKV)

RNP APCH - GPS.		MISSED APPROACH: (Do not exceed 240K until ZUNIP). Climb to 1500 then climbing right turn to 3200 direct ZUNIP and hold.	
Rwy 22 helicopter visibility reduction below 3/4 SM NA.			

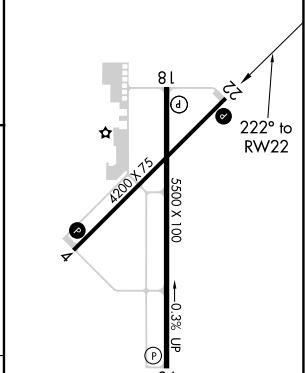
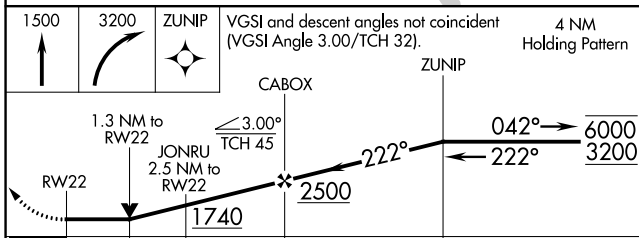
AWOS-3 119.175	DES MOINES APP CON 123.9 307.15	CLNC DEL 126.65	UNICOM 122.9 (CTAF) ①
--------------------------	---	---------------------------	---------------------------------



NC-3, 18 MAY 2023 to 15 JUN 2023

NC-3, 18 MAY 2023 to 15 JUN 2023

ELEV 910	D TDZE 902
----------	-------------------



CATEGORY	A	B	C	D
LNAV MDA	1360-1	458 (500-1)	1360-1 3/8	458 (500-1 3/8)
C CIRCLING	1560-1	650 (700-1)	1560-1 3/4	1760-2 3/4
			650 (700-1 3/4)	850 (900-2 3/4)

MRL Rwy 4-22 and 18-36 ①
 REIL Rwy 4, 18 and 36 ①
 REIL Rwy 22

WAAS CH 70512 W36A	APP CRS 357°	Rwy Idg TDZE Apt Elev	5500 891 910
--	------------------------	-----------------------------	---

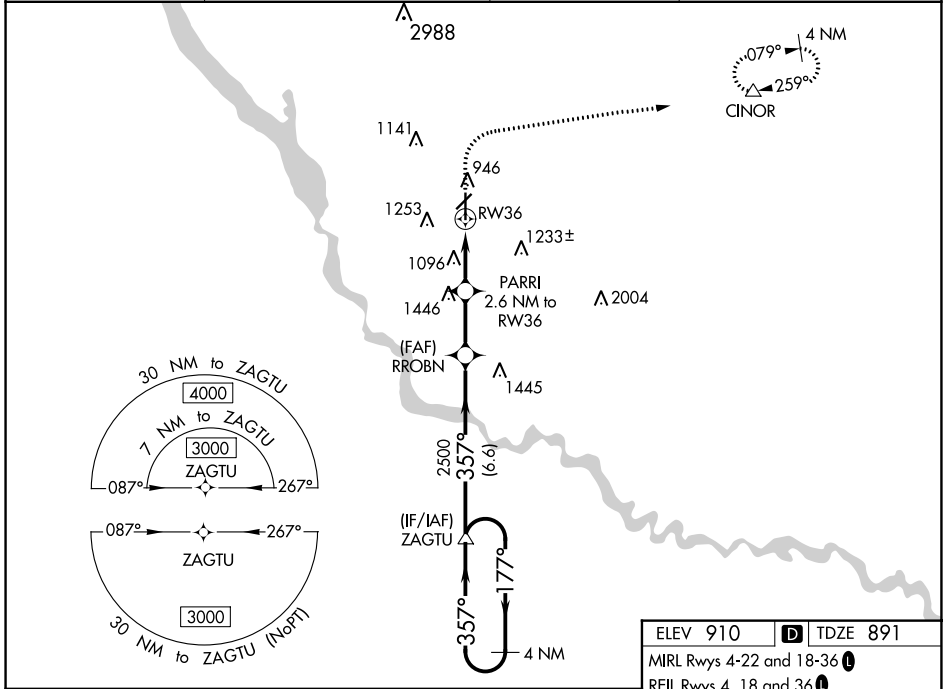
RNAV (GPS) RWY 36

ANKENY RGNL (IKV)

▽
▲ For uncompensated Baro-VNAV systems, LNAV/VNAV NA below -20°C (-4°F) or above 54°C (130°F). Circling Rwy 22 NA at night. DME/DME RNP-0.3 NA.

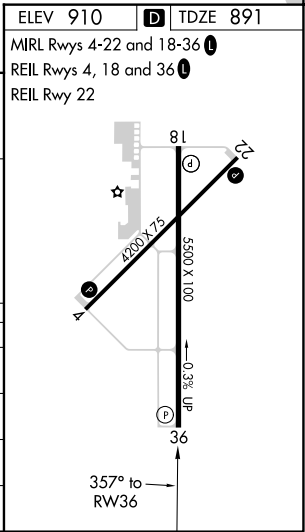
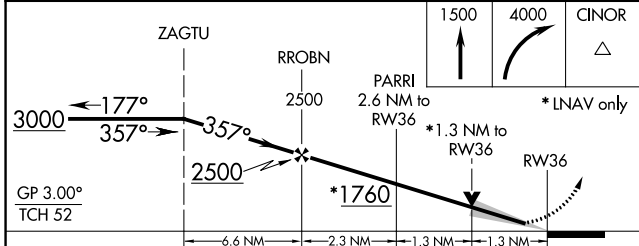
MISSED APPROACH: Climb to 1500 then climbing right turn to 4000 direct CINOR and hold, continue climb-in-hold to 4000.

AWOS-3 119.175	DES MOINES APP CON 123.9 307.15	CLNC DEL 126.65	UNICOM 122.9 (CTAF) ①
--------------------------	---	---------------------------	---------------------------------



NC-3, 18 MAY 2023 to 15 JUN 2023

NC-3, 18 MAY 2023 to 15 JUN 2023



CATEGORY	A	B	C	D
LPV DA		1091-3/4	200 (200-3/4)	
LNAV/VNAV DA		1405-13/4	514 (500-13/4)	
LNAV MDA	1360-1	469 (500-1)	1360-13/8	469 (500-13/8)
C CIRCLING	1560-1	650 (700-1)	1560-13/4 650 (700-13/4)	1760-23/4 850 (900-23/4)