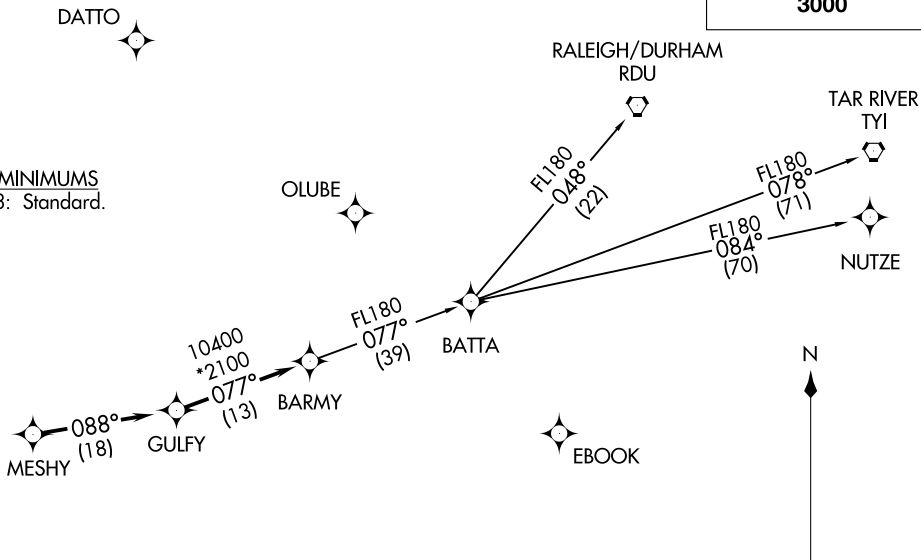
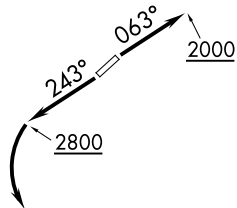


BARMY FOUR DEPARTURE (RNAV)
 (BARMY4.BARMY) 03JAN19
 LINCOLNTON-LINCOLN COUNTY RGNL (IPJ)
 LINCOLNTON, NORTH CAROLINA

AWOS-3
 119.675
 CLNC DEL (GCO)
 124.9
 UNICOM (CTAF)
 123.05
 CHARLOTTE DEP CON
 134.75 257.2

**TOP ALTITUDE:
 3000**

TAKEOFF MINIMUMS
 Rws 5, 23: Standard.



DEPARTURE ROUTE DESCRIPTION

TAKEOFF RWY 5: Climb heading 063° to 2000 before proceeding on course.
TAKEOFF RWY 23: Climb heading 243° to 2800 then turn left.

Climb on heading assigned by ATC, expect RADAR vectors to MESHY, then on depicted route to BARMY. Then on assigned transition. Maintain 3000, expect clearance to filed altitude within 10 minutes after departure.

NUTZE TRANSITION (BARMY4.NUTZE)
RALEIGH/DURHAM TRANSITION (BARMY4.RDU)
TAR RIVER TRANSITION (BARMY4.TYI)

- NOTE: For turbojets only.
- NOTE: DME/DME/IRU or GPS required.
- NOTE: RNAV 1.
- NOTE: RADAR required.
- NOTE: If unable to accept climb rates, advise ATC on initial contact.
- NOTE: Transponder code will be issued via PDC or Charlotte CLNC DEL.
- NOTE: Upon reaching 10000 MSL, accelerate to and maintain 280K, if unable advise ATC.

NOTE: Chart not to scale.

(BARMY4.BARMY) 19003
 AL-6894 (FAA)
 LINCOLNTON-LINCOLN COUNTY RGNL (IPJ)
 LINCOLNTON, NORTH CAROLINA

(BEAVY5.BEAVY) 19003

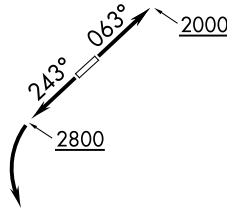
AL-6894 (FAA)

LINCOLN-TON-LINCOLN COUNTY RGNL (IPJ)
LINCOLN-TON, NORTH CAROLINA

BEAVY FIVE DEPARTURE (RNAV)

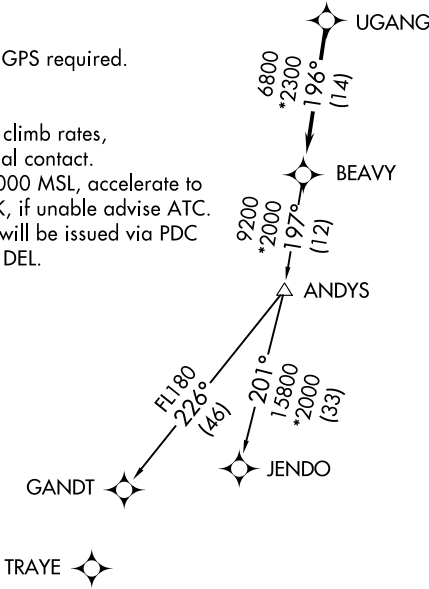
AWOS-3
119.675
CLNC DEL (GCO)
124.9
UNICOM (CTAF)
123.05
CHARLOTTE DEP CON
134.75 257.2

**TOP ALTITUDE:
3000**



TAKEOFF MINIMUMS
Rwys 5, 23: Standard.

- NOTE: For turbojets only.
- NOTE: DME/DME/IRU or GPS required.
- NOTE: RNAV 1.
- NOTE: RADAR required.
- NOTE: If unable to accept climb rates, advise ATC on initial contact.
- NOTE: Upon reaching 10000 MSL, accelerate to and maintain 280K, if unable advise ATC.
- NOTE: Transponder code will be issued via PDC or Charlotte CLNC DEL.



NOTE: Chart not to scale.

DEPARTURE ROUTE DESCRIPTION

TAKEOFF RWY 5: Climb heading 063° to 2000 before proceeding on course.
TAKEOFF RWY 23: Climb heading 243° to 2800 before turning left.

Climb on heading assigned by ATC, expect RADAR vectors to UGANG, then on track 196° to BEAVY. Then on assigned transition. Maintain 3000, expect clearance to filed altitude within 10 minutes after departure.

GANDT TRANSITION (BEAVY5.GANDT)
JENDO TRANSITION (BEAVY5.JENDO)

BEAVY FIVE DEPARTURE (RNAV)
(BEAVY5.BEAVY) 03JAN19

LINCOLN-TON, NORTH CAROLINA
LINCOLN-TON-LINCOLN COUNTY RGNL (IPJ)

SE-2, 22 FEB 2024 to 21 MAR 2024

SE-2, 22 FEB 2024 to 21 MAR 2024

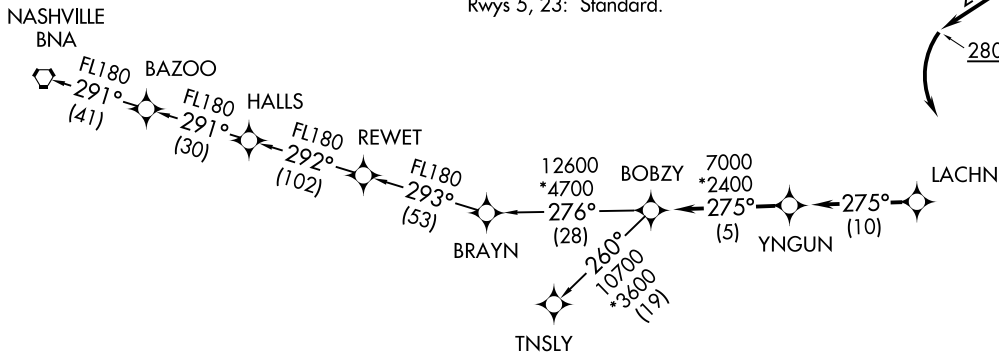
BOBZY FOUR DEPARTURE (RNAV)
(BOBZY4.BOBZY) 03JAN19

LINCOLNTON-LINCOLN COUNTY RGNL (IPJ)
LINCOLNTON, NORTH CAROLINA

**TOP ALTITUDE:
3000**

TAKEOFF MINIMUMS
Rwys 5, 23: Standard.

AWOS-3
119.675
CLNC DEL (GCO)
124.9
UNICOM (CTAF)
123.05
CHARLOTTE DEP CON
134.75 257.2



(BOBZY4.BOBZY) 19003
AL-6894 (FAA)

LINCOLNTON-LINCOLN COUNTY RGNL (IPJ)
LINCOLNTON, NORTH CAROLINA

DEPARTURE ROUTE DESCRIPTION

TAKEOFF RWY 5: Climb heading 063° to 2000 before proceeding on course.
TAKEOFF RWY 23: Climb heading 243° to 2800 then turning left.

Climb on heading assigned by ATC, expect RADAR vectors to LACHN, then on depicted route to BOBZY, then on assigned transition. Maintain 3000. Expect clearance to filed altitude within 10 minutes after departure.

NASHVILLE TRANSITION (BOBZY4.BNA)
TNSLY TRANSITION (BOBZY4.TNSLY)

- NOTE: For turbojets only.
- NOTE: DME/DME/IRU or GPS required.
- NOTE: RNAV 1.
- NOTE: RADAR required.
- NOTE: If unable to accept climb rates, advise ATC on initial contact.
- NOTE: Upon reaching 10000 MSL, accelerate to and maintain 280K, if unable advise ATC.

NOTE: Chart not to scale.

(ESTRR4.ESTRR) 19003

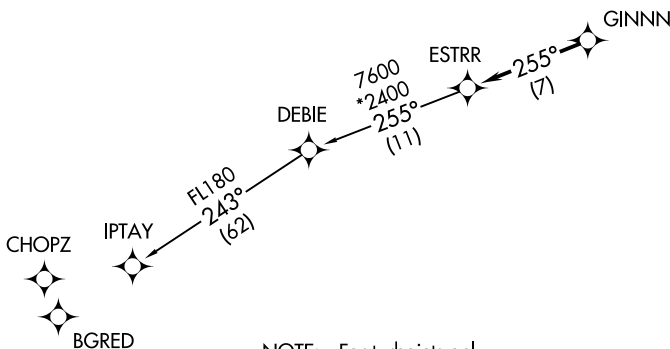
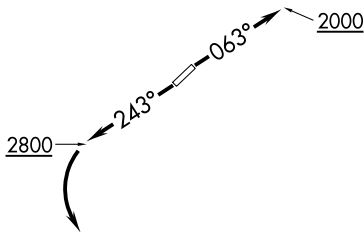
ESTRR FOUR DEPARTURE (RNAV)

LINCOLNTON-LINCOLN COUNTY RGNL (IPJ)
LINCOLNTON, NORTH CAROLINA

AWOS-3
119.675
CLNC DEL (GCO)
124.9
UNICOM (CTAF)
123.05
CHARLOTTE DEP CON
134.75 257.2

**TOP ALTITUDE:
3000**

TAKEOFF MINIMUMS
Rwys 5, 23: Standard.



- NOTE: For turbojets only.
- NOTE: DME/DME/IRU or GPS required.
- NOTE: RNAV 1.
- NOTE: RADAR required.
- NOTE: If unable to accept climb rates, advise ATC on initial contact.
- NOTE: Upon reaching 10000 MSL, accelerate to and maintain 280K, if unable advise ATC.

NOTE: Chart not to scale.



DEPARTURE ROUTE DESCRIPTION

TAKEOFF RWY 5: Climb heading 063° to 2000 before proceeding on course.

TAKEOFF RWY 23: Climb heading 243° to 2800 before turning left.

Climb on heading assigned by ATC, expect RADAR vectors to GINNN, then on track 255° to ESTRR, then on IPTAY transition. Maintain 3000, expect clearance to filed altitude within 10 minutes after departure.

IPTAY TRANSITION (ESTRR4.IPTAY)

ESTRR FOUR DEPARTURE (RNAV)
(ESTRR4.ESTRR) 03JAN19

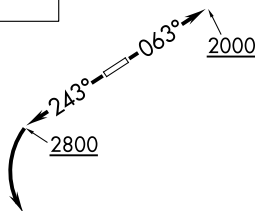
LINCOLNTON, NORTH CAROLINA
LINCOLNTON-LINCOLN COUNTY RGNL (IPJ)

SE-2, 22 FEB 2024 to 21 MAR 2024

SE-2, 22 FEB 2024 to 21 MAR 2024

AWOS-3
119.675
CLNC DEL (GCO)
124.9
UNICOM (CTAF)
123.05
CHARLOTTE DEP CON
134.75 257.2

**TOP ALTITUDE:
3000**



TAKEOFF MINIMUMS
Rwys 5, 23: Standard.



- NOTE: For turbojets only.
- NOTE: DME/DME/IRU or GPS required.
- NOTE: RNAV 1.
- NOTE: RADAR required.
- NOTE: If unable to accept climb rates, advise ATC on initial contact.
- NOTE: Upon reaching 10000 MSL, accelerate to and maintain 280K, if unable advise ATC.
- NOTE: Transponder code will be issued via PDC or Charlotte CLNC DEL.

NOTE: Chart not to scale.



DEPARTURE ROUTE DESCRIPTION

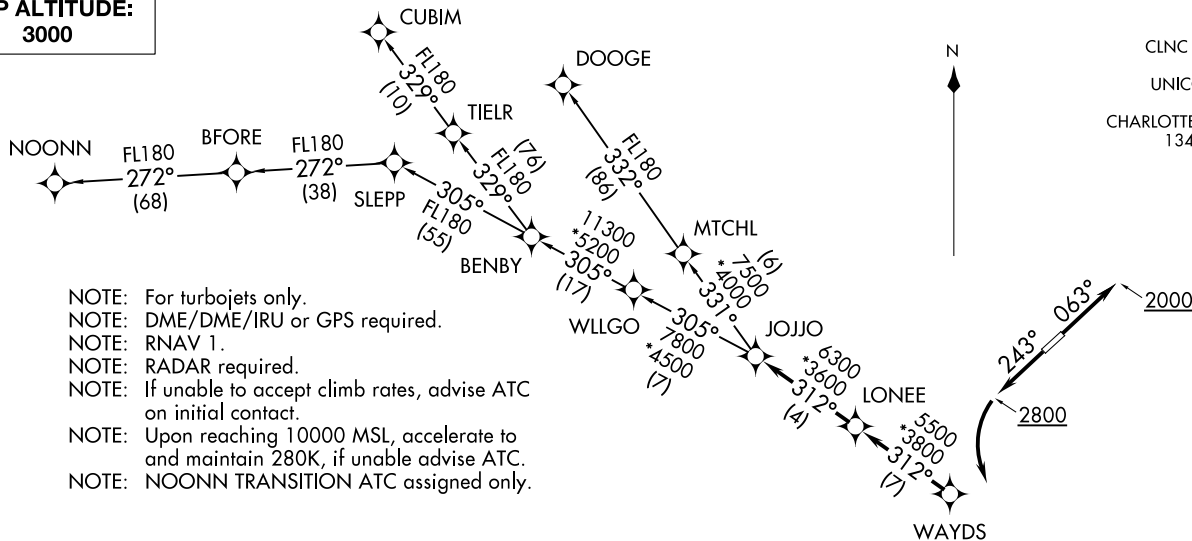
TAKEOFF RWY 5: Climb heading 063° to 2000 before proceeding on course.
TAKEOFF RWY 23: Climb heading 243° to 2800 before turning left.

Climb on heading assigned by ATC, expect RADAR vectors to GILFN, then on track 188° to ICONS. Then on NOOKS transition. Maintain 3000, expect filed altitude within 10 minutes after departure.

NOOKS TRANSITION (ICONS4.NOOKS)

JOJO FOUR DEPARTURE (RNAV) (JOJO4.JOJO) 03JAN19 LINCOLTON-LINCOLN COUNTY RGNL (IPJ) LINCOLTON, NORTH CAROLINA

**TOP ALTITUDE:
3000**



AWOS-3
119.675
CLNC DEL (GCO)
124.9
UNICOM (CTAF)
123.05
CHARLOTTE DEP CON
134.75 257.2

- NOTE: For turbojets only.
- NOTE: DME/DME/IRU or GPS required.
- NOTE: RNAV 1.
- NOTE: RADAR required.
- NOTE: If unable to accept climb rates, advise ATC on initial contact.
- NOTE: Upon reaching 10000 MSL, accelerate to and maintain 280K, if unable advise ATC.
- NOTE: NOONN TRANSITION ATC assigned only.

DEPARTURE ROUTE DESCRIPTION

TAKEOFF RWY 5: Climb heading 063° to 2000 before proceeding on course.
TAKEOFF RWY 23: Climb heading 243° to 2800 before turning left.

Climb on heading assigned by ATC, expect RADAR vectors to WAYDS, then on depicted route to JOJO. Then on assigned transition. Maintain 3000, expect clearance to filed altitude within 10 minutes after departure.

CUBIM TRANSITION (JOJO4.CUBIM)
DOOGE TRANSITION (JOJO4.DOOGE)
NOONN TRANSITION (JOJO4.NOONN)

TAKEOFF MINIMUMS
Rwys 5, 23: Standard.

NOTE: Chart not to scale.

(JOJO4.JOJO) 19003 JOJO FOUR DEPARTURE (RNAV) AL-6894 (FAA) LINCOLTON-LINCOLN COUNTY RGNL (IPJ) LINCOLTON, NORTH CAROLINA

(KER3.KER) 22307
KERMIT THREE DEPARTURE

LINCOLN-TON-LINCOLN COUNTY RGNL (IPJ)
 AL-6894 (FAA)
 LINCOLN-TON, NORTH CAROLINA

**TOP ALTITUDE:
 3000**

AWOS-3
 119.675
 CLNC DEL (GCO)
 124.9
 UNICOM (CTAF)
 123.05
 CHARLOTTE DEP CON
 134.75 257.2

PULASKI
 116.8 PSK
 Chan 115
 N37°05.26'
 W80°42.77'

NALEY
 N36°21.16'
 W80°48.41'

BARRETTS MOUNTAIN
 113.75 BZM
 Chan 84(Y)

SUGARLOAF MOUNTAIN
 112.2 SUG
 Chan 59

CHARLOTTE
 115.0 CLT
 Chan 97
 N35°11.42'
 W80°57.11'

JOTTA
 N36°00.88'
 W80°50.96'
 L-25

RALEIGH/DURHAM
 117.2 RDU
 Chan 119

MERIL
 N35°36.79'
 W79°26.03'
 L-36

SANDHILLS
 111.8 SDZ
 Chan 55

BOBZY
 N35°11.13'
 W81°38.05'

68

NEANO
 N35°04.88'
 W81°59.79'
 L-25

DEBIE
 N34°55.82'
 W81°48.53'

FOOTHILLS
 113.4 ODF
 Chan 81

ANDYS
 N34°22.25'
 W81°08.63'
 L-24-25

WALUT
 N34°40.00'
 W80°50.53'

LILLS
 N34°56.13'
 W79°55.81'
 L-25-35-36

HAMLN
 N34°21.54'
 W80°46.71'
 H-12

CHESTERFIELD
 114.55 CTF
 Chan 92(Y)

TREAL
 N33°04.18'
 W81°26.46'
 H-9-12

TAKEOFF MINIMUMS
 Rwy 5, 23: Standard.

- NOTE: For turbojet aircraft only.
- NOTE: RADAR and DME required.
- NOTE: Upon reaching 10000 MSL, accelerate to and maintain 280K, if unable advise ATC.
- NOTE: Transponder code will be issued via Charlotte clearance delivery.

(NARRATIVE ON FOLLOWING PAGE)

NOTE: Chart not to scale.

KERMIT THREE DEPARTURE
 (KER3.KER) 03JAN19

LINCOLN-TON, NORTH CAROLINA
 LINCOLN-TON-LINCOLN COUNTY RGNL (IPJ)

SE-2, 22 FEB 2024 to 21 MAR 2024

SE-2, 22 FEB 2024 to 21 MAR 2024



DEPARTURE ROUTE DESCRIPTION

TAKEOFF RWY 5: Climb heading 063° to 2000 before proceeding on course, thence. . . .

TAKEOFF RWY 23: Climb heading 233° to 2800 before turning left, thence. . . .

. . . .on RADAR vectors to intercept filed/assigned transition or enroute fix/navaid.

Maintain 3000, expect filed altitude/flight level 10 minutes after departure.

ANDYS TRANSITION (KER3.ANDYS): From over CLT VOR/DME on CLT R-196 to ANDYS.

DEBIE TRANSITION (KER3.DEBIE): From over CLT VOR/DME on CLT R-255 to DEBIE.

HAMLN TRANSITION (KER3.HAMLN): From over CLT VOR/DME on CLT R-175 to HAMLN.

JOTTA TRANSITION (KER3.JOTTA): From over CLT VOR/DME on CLT R-011 to JOTTA.

LILLS TRANSITION (KER3.LILLS): From over CLT VOR/DME on CLT R-112 to LILLS.

MERIL TRANSITION (KER3.MERIL): From over CLT VOR/DME on CLT R-076 to MERIL.

NALEY TRANSITION (KER3.NALEY): From over CLT VOR/DME on CLT R-011 to NALEY.

NEANO TRANSITION (KER3.NEANO): From over CLT VOR/DME on CLT R-275 to BOBZY and ODF R-070 to NEANO.

TREAL TRANSITION (KER3.TREAL): From over CLT VOR/DME on CLT R-196 to TREAL.

SE-2, 22 FEB 2024 to 21 MAR 2024

SE-2, 22 FEB 2024 to 21 MAR 2024

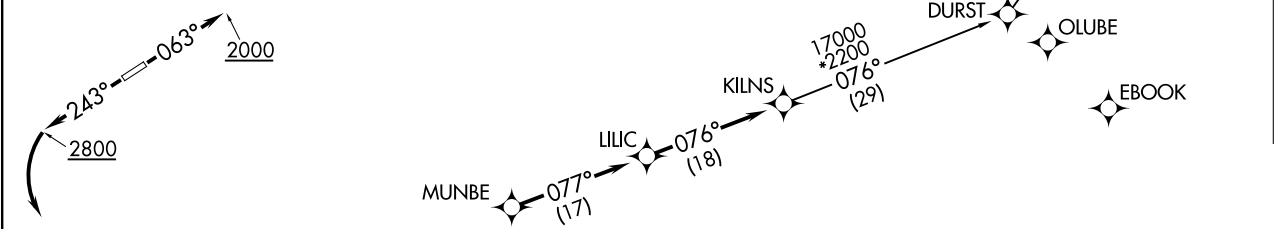
KILNS FOUR DEPARTURE (RNAV) (KILNS4,KILNS) 03JAN19 LINCOLN-TON-LINCOLN COUNTY RGNL (IPJ) LINCOLN, NORTH CAROLINA

(KILNS4,KILNS) 19003 AL-6894 (FAA) LINCOLN-TON-LINCOLN COUNTY RGNL (IPJ) LINCOLN, NORTH CAROLINA

AWOS-3
119.675
CLNC DEL (GCO)
124.9
UNICOM (CTAF)
123.05
CHARLOTTE DEP CON
134.75 257.2

NOTE: For turboprops only.
NOTE: DME/DME/IRU or GPS required.
NOTE: RNAV 1.
NOTE: RADAR required.
NOTE: Transponder code will be issued via PDC or Charlotte CLNC DEL.
NOTE: Upon reaching 10000 MSL, accelerate to and maintain 280K, if unable advise ATC.
NOTE: If unable to accept climb rates, advise ATC on initial contact.

**TOP ALTITUDE:
3000**



NOTE: Chart not to scale.

DEPARTURE ROUTE DESCRIPTION

TAKEOFF RWY 5: Climb heading 063° to 2000 before proceeding on course.
TAKEOFF RWY 23: Climb heading 243° to 2800 before turning left.

Climb on heading assigned by ATC, expect RADAR vectors to MUNBE, then on depicted route to KILNS, then on AUDII transition. Maintain 3000. Expect clearance to filed altitude within 10 minutes after departure.

AUDII TRANSITION (KILNS4.AUDII)

TAKEOFF MINIMUMS
Rwys 5, 23: Standard.

KNIGHTS TWO DEPARTURE

LINCOLNTON, NORTH CAROLINA

AWOS-3
119.675
CLNC DEL (GCO)
124.9
UNICOM (CTAF)
123.05
CHARLOTTE DEP CON
134.75 257.2

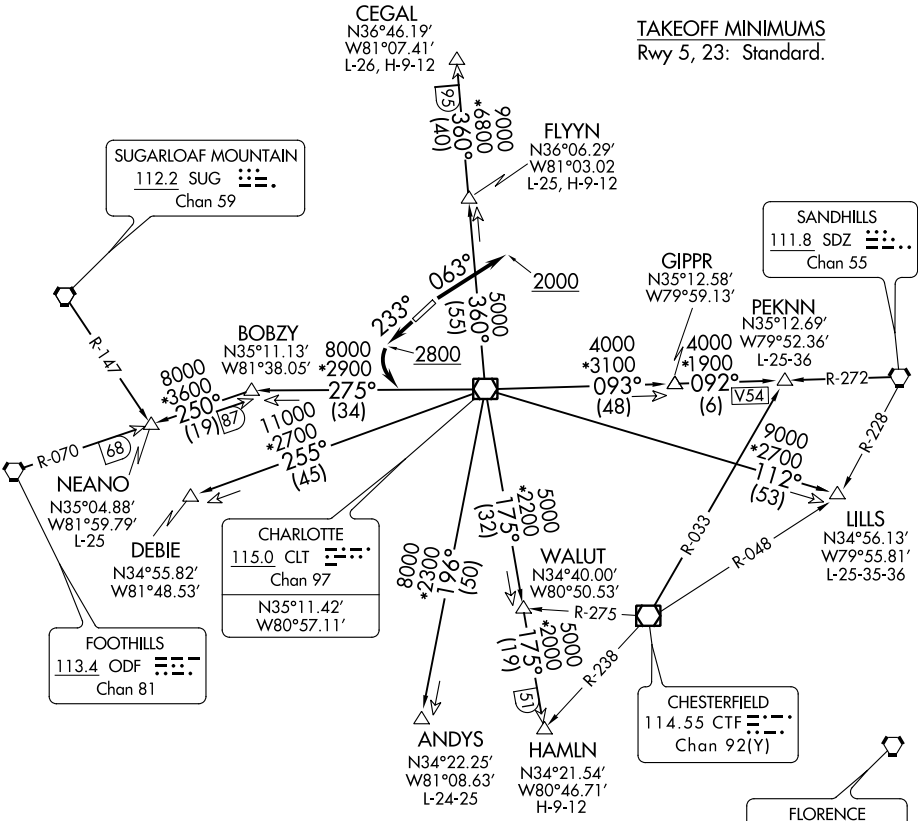
NOTE: For propeller aircraft only.
NOTE: RADAR and DME required.
NOTE: Turboprops: Operate in a manner that will result in best forward speed and climb rate.
NOTE: Transponder code will be issued via Charlotte clearance delivery.

**TOP ALTITUDE:
3000**

TAKEOFF MINIMUMS
Rwy 5, 23: Standard.

SE-2, 22 FEB 2024 to 21 MAR 2024

SE-2, 22 FEB 2024 to 21 MAR 2024



- ANDYS TRANSITION: Expect vectors to intercept CLT R-196 to ANDYS.
- CEGAL TRANSITION: Expect vectors to intercept CLT R-360 to CEGAL.
- DEBIE TRANSITION: Expect vectors to intercept CLT R-255 to DEBIE.
- FLYYN TRANSITION: Expect vectors to intercept CLT R-360 to FLYYN.
- HAMLN TRANSITION: Expect vectors to intercept CLT R-175 to HAMLN.
- LILLS TRANSITION: Expect vectors to intercept CLT R-112 to LILLS.
- NEANO TRANSITION: Expect vectors to intercept CLT R-275 to BOBZY then ODF R-070 to NEANO.
- PEKNN TRANSITION: Expect vectors to intercept CLT R-093 to GIPPR then SDZ R-272 to PEKNN.

(NARRATIVE ON FOLLOWING PAGE)

NOTE: Chart not to scale.

KNIGHTS TWO DEPARTURE

LINCOLNTON, NORTH CAROLINA
LINCOLNTON-LINCOLN COUNTY RGNL (IPJ)

KNIGHTS TWO DEPARTURE



DEPARTURE ROUTE DESCRIPTION

TAKEOFF RUNWAY 5: Climb heading 063° to 2000 before proceeding on course, thence. . . .

TAKEOFF RUNWAY 23: Climb heading 233° to 2800 before turning left, thence. . . .

. . . .expect RADAR vectors to intercept filed/assigned transition or enroute fix/navaid.

Maintain 3000, expect filed altitude/flight level 10 minutes after departure.

ANDYS TRANSITION (KNI2.ANDYS): From over CLT VOR/DME on CLT R-196 to ANDYS.

CEGAL TRANSITION (KNI2.CEGAL): From over CLT VOR/DME on CLT R-360 to CEGAL.

DEBIE TRANSITION (KNI2.DEBIE): From over CLT VOR/DME on CLT R-255 to DEBIE.

FLYYN TRANSITION (KNI2.FLYYN): From over CLT VOR/DME on CLT R-360 to FLYYN.

HAMLN TRANSITION (KNI2.HAMLN): From over CLT VOR/DME on CLT R-175 to HAMLN.

LILLS TRANSITION (KNI2.LILLS): From over CLT VOR/DME on CLT R-112 to LILLS.

NEANO TRANSITION (KNI2.NEANO): From over CLT VOR/DME on CLT R-275 to BOBZY,
then on ODF R-070 to NEANO.

PEKNN TRANSITION (KNI2.PEKNN): From over CLT VOR/DME on CLT R-093 to GIPPR,
then on SDZ R-272 to PEKNN.

SE-2, 22 FEB 2024 to 21 MAR 2024

SE-2, 22 FEB 2024 to 21 MAR 2024

(KRITR5.KRITR) 19003

KRITR FIVE DEPARTURE (RNAV)

LINCOLN-TON-LINCOLN COUNTY RGNL (IPJ)

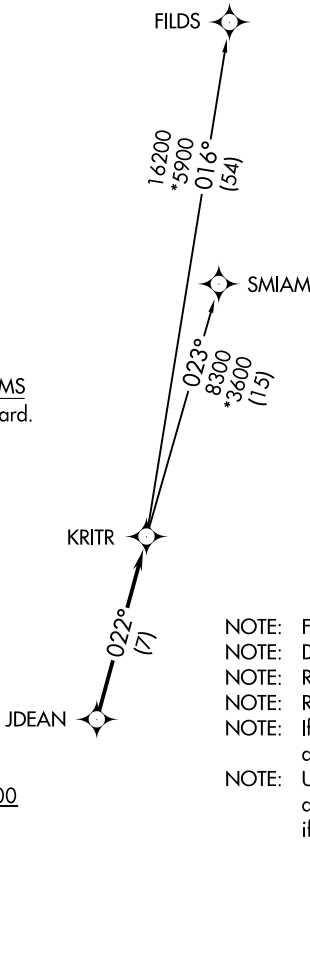
AL-6894 (FAA)

LINCOLN-TON, NORTH CAROLINA

AWOS-3
119.675
CLNC DEL (GCO)
124.9
UNICOM (CTAF)
123.05
CHARLOTTE DEP CON
134.75 257.2

**TOP ALTITUDE:
3000**

TAKEOFF MINIMUMS
Rwys 5, 23: Standard.



- NOTE: For turbojets only.
- NOTE: DME/DME/IRU or GPS required.
- NOTE: RNAV 1.
- NOTE: RADAR required.
- NOTE: If unable to accept climb rates, advise ATC on initial contact.
- NOTE: Upon reaching 10000 MSL, accelerate to and maintain 280K, if unable advise ATC.

NOTE: Chart not to scale.



DEPARTURE ROUTE DESCRIPTION

TAKEOFF RWY 5: Climb heading 063° to 2000 before proceeding on course.

TAKEOFF RWY 23: Climb heading 243° to 2800 before turning left.

Climb on heading assigned by ATC, expect RADAR vectors to JDEAN, then on track 022° to KRITR, then on assigned transition. Maintain 3000, expect filed altitude within 10 minutes after departure.

FILDS TRANSITION (KRITR5.FILDS)

SMIAM TRANSITION (KRITR5.SMIAM)

KRITR FIVE DEPARTURE (RNAV)

(KRITR5.KRITR) 03JAN19

LINCOLN-TON, NORTH CAROLINA

LINCOLN-TON-LINCOLN COUNTY RGNL (IPJ)

SE-2, 22 FEB 2024 to 21 MAR 2024

SE-2, 22 FEB 2024 to 21 MAR 2024

(KWEEN4.KWEEN) 19003

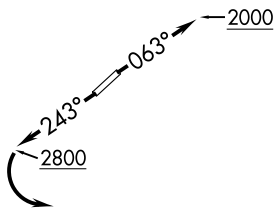
AL-6894 (FAA)

LINCOLN-TOLSON COUNTY RGNL (IPJ)
LINCOLN, NORTH CAROLINA

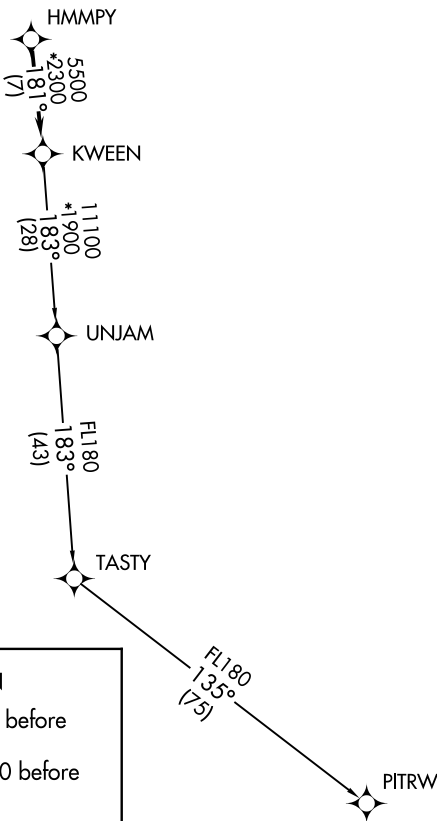
KWEEN FOUR DEPARTURE (RNAV)

AWOS-3
119.675
CLNC DEL (GCO)
124.9
UNICOM (CTAF)
123.05
CHARLOTTE DEP CON
134.75 257.2

**TOP ALTITUDE:
3000**



TAKEOFF MINIMUMS
Rwys 5, 23: Standard.



- NOTE: For turbojets only.
- NOTE: DME/DME/IRU or GPS required.
- NOTE: RNAV 1.
- NOTE: RADAR required.
- NOTE: If unable to accept climb rates, advise ATC on initial contact.
- NOTE: Upon reaching 10000 MSL, accelerate to and maintain 280K, if unable, advise ATC.
- NOTE: Transponder code will be issued via PDC or Charlotte CLNC DEL.

NOTE: Chart not to scale.

DEPARTURE ROUTE DESCRIPTION

TAKEOFF RWY 5: Climb heading 063° to 2000 before proceeding on course.

TAKEOFF RWY 23: Climb heading 243° to 2800 before turning left.

Climb on heading assigned by ATC, expect RADAR vectors to HMMPY, then on track 181° to KWEEN, then on assigned transition, maintain 3000, expect filed altitude within 10 minutes after departure.

PITRW TRANSITION (KWEEN4.PITRW)
UNJAM TRANSITION (KWEEN4.UNJAM)

KWEEN FOUR DEPARTURE (RNAV)

(KWEEN4.KWEEN) 03JAN19

LINCOLN, NORTH CAROLINA
LINCOLN-TOLSON COUNTY RGNL (IPJ)

SE-2, 22 FEB 2024 to 21 MAR 2024

SE-2, 22 FEB 2024 to 21 MAR 2024

(LILLS2.LILLS) 19003

AL-6894 (FAA)

LINCOLNTON, NORTH CAROLINA

LILLS TWO DEPARTURE (RNAV)

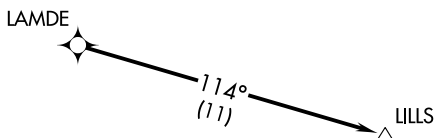
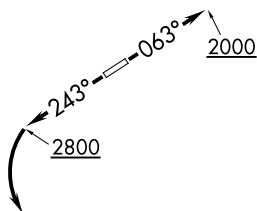
LINCOLNTON-LINCOLN COUNTY RGNL (IPJ)

AWOS-3
119.675
CLNC DEL (GCO)
124.9
UNICOM (CTAF)
123.05
CHARLOTTE DEP CON
134.75 257.2

**TOP ALTITUDE:
3000**

TAKEOFF MINIMUMS

Rwys 5, 23: Standard.



- NOTE: For turbojets only.
- NOTE: DME/DME/IRU or GPS required.
- NOTE: RNAV 1.
- NOTE: RADAR required.
- NOTE: Upon reaching 10000 MSL, accelerate to and maintain 280K, if unable advise ATC.
- NOTE: If unable to accept climb rates, advise ATC on initial contact.
- NOTE: Transponder code will be issued via PDC or Charlotte CLNC DEL.

NOTE: Chart not to scale.



DEPARTURE ROUTE DESCRIPTION

TAKEOFF RWY 5: Climb heading 063° to 2000 before proceeding on course.
TAKEOFF RWY 23: Climb heading 243° to 2800 before turning left.

Climb on heading assigned by ATC, expect RADAR vectors to LAMDE, then on depicted route to LILLS. Maintain 3000. Expect clearance to filed altitude within 10 minutes after departure.

LILLS TWO DEPARTURE (RNAV)

(LILLS2.LILLS) 03JAN19

LINCOLNTON, NORTH CAROLINA

LINCOLNTON-LINCOLN COUNTY RGNL (IPJ)

SE-2, 22 FEB 2024 to 21 MAR 2024

SE-2, 22 FEB 2024 to 21 MAR 2024

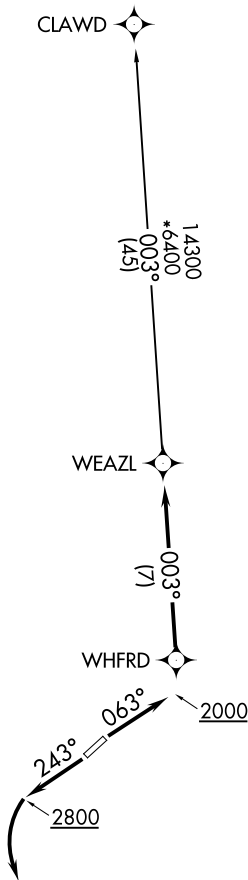
(WEAZL4.WEAZL) 19003

WEAZL FOUR DEPARTURE (RNAV)

LINCOLN-TON-LINCOLN COUNTY RGNL (IPJ)
AL-6894 (FAA) LINCOLN-TON, NORTH CAROLINA

TOP ALTITUDE:
3000

AWOS-3
119.675
CLNC DEL (GCO)
124.9
UNICOM (CTAF)
123.05
CHARLOTTE DEP CON
134.75 257.2



TAKEOFF MINIMUMS

Rwys 5, 23: Standard.

- NOTE: For turbojets only.
- NOTE: DME/DME/IRU or GPS required.
- NOTE: RNAV 1.
- NOTE: RADAR required.
- NOTE: If unable to accept climb rates, advise ATC on initial contact.
- NOTE: Upon reaching 10000 MSL, accelerate to and maintain 280K, if unable advise ATC.

NOTE: Chart not to scale.



DEPARTURE ROUTE DESCRIPTION

TAKEOFF RWY 5: Climb heading 063° to 2000 before proceeding on course.

TAKEOFF RWY 23: Climb heading 243° to 2800 before turning left.

Climb on heading assigned by ATC, expect RADAR vectors to WHFRD, then on track 003° to WEAZL. Then on CLAWD transition. Maintain 3000, expect clearance to filed altitude within 10 minutes after departure.

CLAWD TRANSITION (WEAZL4.CLAWD)

WEAZL FOUR DEPARTURE (RNAV)

(WEAZL4.WEAZL) 03JAN19

LINCOLN-TON, NORTH CAROLINA
LINCOLN-TON-LINCOLN COUNTY RGNL (IPJ)

SE-2, 22 FEB 2024 to 21 MAR 2024

SE-2, 22 FEB 2024 to 21 MAR 2024