

JOOLS ONE ARRIVAL (RNAV)
(JOOLS.JOOLS1) 15JUN23

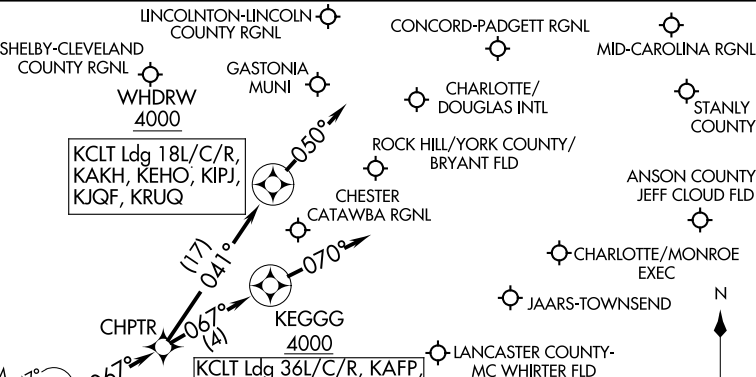
JOOLS ONE ARRIVAL (RNAV)
23166

AL-78 (FAA)

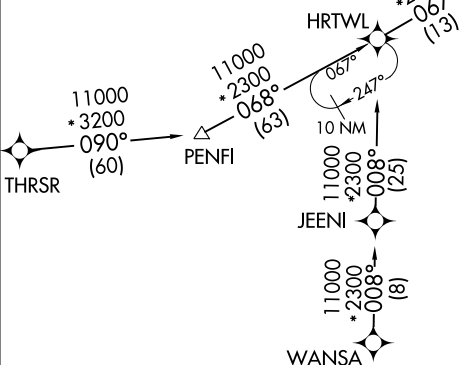
CHARLOTTE NORTH CAROLINA

CHARLOTTE APP CON
135.6 377.15
CLT D-ATIS ARR
121.15
JQF ATIS *
133.675

RNAV 1 - DME/DME/IRU or GPS.
RADAR required.



Use CAUTION: Parachute jumping 17 NM NE of
CHPTR, 3 NM radius KDCM (Chester-Catawba Rgnl),
AOB 14,500 MSL.



NOTE: Chart not to scale.

ARRIVAL ROUTE DESCRIPTION

THRSR TRANSITION (THRSR.JOOLS1)
WANSR TRANSITION (WANSR.JOOLS1)

- KCLT: From JOOLS on track 067° to CHPTR.
- LANDING RUNWAYS 18L/C/R: From CHPTR on track 041° to cross WHDRW at or above 4000, then on track 050°. Expect RADAR vectors to final approach course.
- LANDING RUNWAYS 36L/C/R: From CHPTR on track 067° to cross KEGGG at or above 4000, then on track 070°. Expect RADAR vectors to final approach course.
- LANDING KAKH/KRUQ/KEHO/KJQF/KIPJ: From JOOLS on track 067° to CHPTR, then on track 041° to cross WHDRW at or above 4000, then on track 050°. Expect RADAR vectors to final approach course.
- LANDING KDCM/KEQY/KUZA/KAFP/N52/KVUJ/KLKR: From JOOLS on track 067° to CHPTR, then on track 067° to cross KEGGG at or above 4000, then on track 070°. Expect RADAR vectors to final approach course.

CHARLOTTE APP CON
125.35 257.2
CLT D-ATIS ARR
121.15

NOTE: RADAR required.
NOTE: VXV transition for turbojet aircraft only.
NOTE: HMV and SOT transitions for turboprop/prop aircraft only.

(JALIT.LINN3) 22307
LINN THREE ARRIVAL

AL-78 (FAA)

CHARLOTTE, NORTH CAROLINA

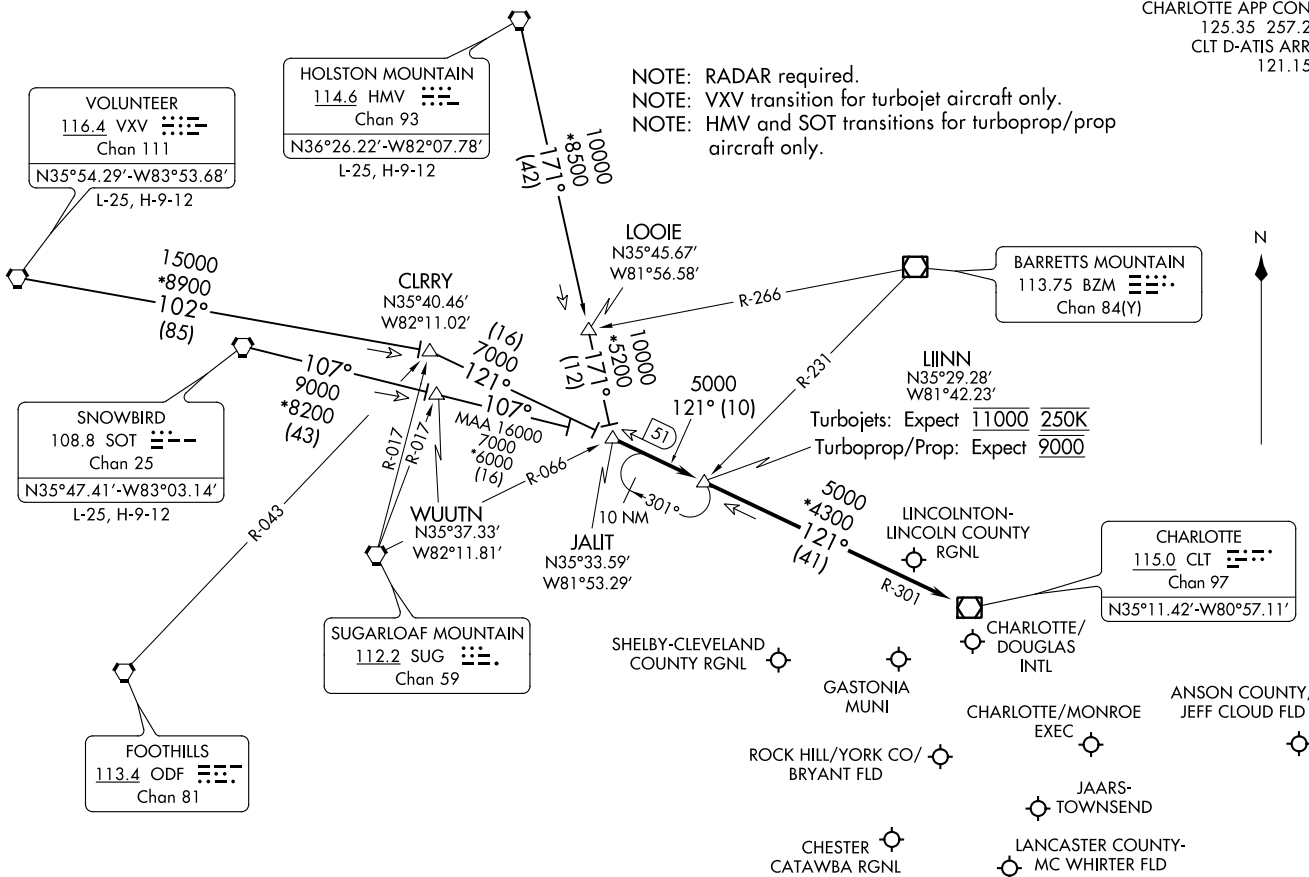


(NARRATIVE ON FOLLOWING PAGE)

NOTE: Chart not to scale.

LINN THREE ARRIVAL
(JALIT.LINN3) 08NOV18

CHARLOTTE, NORTH CAROLINA



VOLUNTEER
116.4 VXV
Chan 111
N35°54.29'-W83°53.68'
L-25, H-9-12

HOLSTON MOUNTAIN
114.6 HMV
Chan 93
N36°26.22'-W82°07.78'
L-25, H-9-12

SNOWBIRD
108.8 SOT
Chan 25
N35°47.41'-W83°03.14'
L-25, H-9-12

SUGARLOAF MOUNTAIN
112.2 SUG
Chan 59

FOOTHILLS
113.4 ODF
Chan 81

CLRRY
N35°40.46'
W82°11.02'

WUJTN
N35°37.33'
W82°11.81'

JALIT
N35°33.59'
W81°53.29'

LOOIE
N35°45.67'
W81°56.58'

BARRETT'S MOUNTAIN
113.75 BZM
Chan 84(Y)

LINN
N35°29.28'
W81°42.23'

CHARLOTTE
115.0 CLT
Chan 97
N35°11.42'-W80°57.11'

GASTONIA MUNI

ROCK HILL/YORK CO/
BRYANT FLD

CHESTER
CATAWBA RGNL

CHARLOTTE/MONROE
EXEC

JAARS-TOWNSEND

LANCASTER COUNTY-
MC WHIRTER FLD

ANSON COUNTY/
JEFF CLOUD FLD

15000
*8900
102°
(85)

107°
9000
*8200
(43)

121°
7000
(16)

10000
*5200
171°
(121)

10000
*5200
171°
(121)

5000
121° (110)

5000
*4300
121°
(41)

R-017

R-017

R-043

R-066

R-266

R-231

R-301

MAA 16000
7000
*6000
(16)

10 NM

301°

10 NM

ARRIVAL ROUTE DESCRIPTION

HOLSTON MOUNTAIN TRANSITION (HMV.LIINN3): From over HMV VORTAC on HMV R-171 to JALIT. Thence

SNOWBIRD TRANSITION (SOT.LIINN3): From over SOT VORTAC on SOT R-107 to JALIT. Thence

VOLUNTEER TRANSITION (VXV.LIINN3): From over VXV VORTAC on VXV R-102 to CLRRY, then on CLT R-301 to JALIT. Thence

. . . . from JALIT on CLT R-301 to LIINN, then on CLT R-301 to CLT VOR/DME. Expect RADAR vectors to destination airport or final approach course prior to CLT VOR/DME.

SE-2, 22 FEB 2024 to 21 MAR 2024

SE-2, 22 FEB 2024 to 21 MAR 2024

MAJIC FOUR ARRIVAL

CHARLOTTE, NORTH CAROLINA

CHARLOTTE APP CON
126.15 282.325
CLT D-ATIS ARR
121.15

MAYOS
N36°19.59'-W79°59.79'
TURBOJET VERTICAL NAVIGATION
PLANNING INFORMATION
Expect FL220

MAJIC
N35°48.71'-W80°26.17'
TURBOJET VERTICAL NAVIGATION
PLANNING INFORMATION
Expect 13000 250K

SUDSY
N35° 44.58'
W80° 29.63'

GIZMO
N35° 32.99'
W80° 39.29'

CHARLOTTE
115.0 CLT
Chan 97
N35°11.42'-W80°57.11'

CHARLOTTE/MONROE
EXEC

JAARS-TOWNSEND

LANCASTER COUNTY-
MC WHIRTER FLD

CHESTER CATAWBA
RGNL

ROCK HILL/YORK
COUNTY/BRYANT
FLD

GASTONIA
MUNI

SHELBY-
CLEVELAND
COUNTY RGNL

LINCOLN-
LINCOLN COUNTY
RGNL

CHARLOTTE/
DOUGLAS
INTL

15 NM
039°
14000
219°
(48)

KELLS
N36° 35.17'
W79° 47.17'

11000
219°
(38)

10 NM
039°

11000
273°
(40)

RALEIGH/DURHAM
117.2 RDU
Chan 119
N35° 52.35'
W78° 47.00'
L-36, H-9-12

LIBERTY
113.0 LIB
Chan 77
N35°48.70'
W79°36.76'

CAUTION: Parachute jumping 6 NM south-
southwest of SUDSY, 5 NM radius of (KRUC)
Mid-Carolina Rgnl, at or below 14500 MSL.

NOTE: DME required.
NOTE: RADAR required for LIB R-273.
NOTE: Landing other than Charlotte/
Douglas Intl; expect RADAR
vectors to destination airport
or final approach course prior
to CLT 10 DME fix.

NOTE: Chart not to scale.

ARRIVAL ROUTE DESCRIPTION

LIBERTY TRANSITION (LIB.MAJIC4): From over LIB VORTAC on LIB R-273 to MAJIC INT. Thence. . .

LYNCHBURG TRANSITION (LYH.MAJIC4): From over LYH VOR/DME on LYH R-219 and CLT R-039 to MAJIC INT. Thence. . .

. . . From over MAJIC on CLT R-039 to:

LANDING NORTH: CLT VOR/DME. Expect RADAR vectors to final approach course prior to the CLT 5 DME fix.

LANDING SOUTH: GIZMO. Expect RADAR vectors to final approach course.

MAJIC FOUR ARRIVAL

(MAJIC.MAJIC4) 26MAR20

CHARLOTTE, NORTH CAROLINA

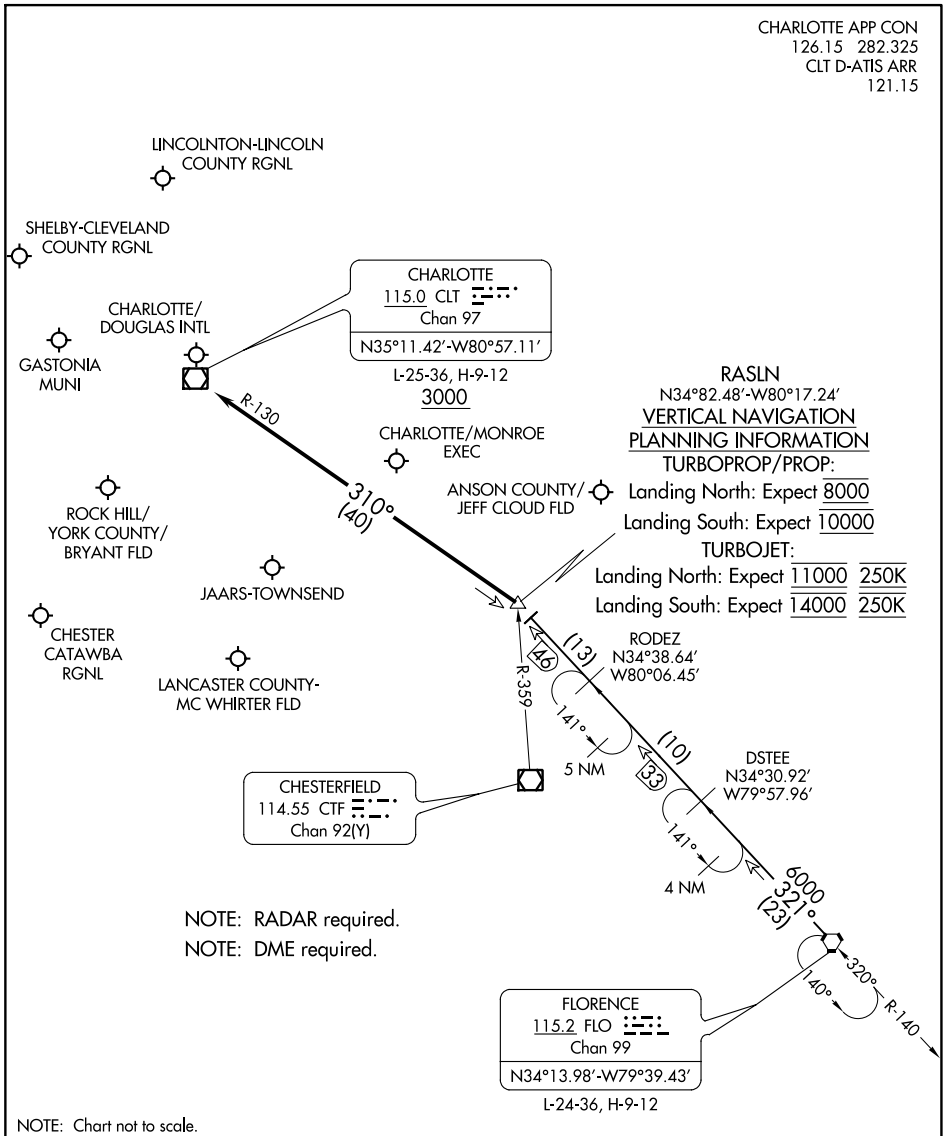
SE-2, 22 FEB 2024 to 21 MAR 2024

SE-2, 22 FEB 2024 to 21 MAR 2024

RASLN THREE ARRIVAL

CHARLOTTE, NORTH CAROLINA

CHARLOTTE APP CON
126.15 282.325
CLT D-ATIS ARR
121.15



SE-2, 22 FEB 2024 to 21 MAR 2024

SE-2, 22 FEB 2024 to 21 MAR 2024

ARRIVAL ROUTE DESCRIPTION

FLORENCE TRANSITION (FLO.RASLN3): From over FLO VORTAC on FLO R-321 to RASLN INT. Thence

. . . . from RASLN on CLT R-130 to cross CLT VOR/DME at or above 3000. Expect RADAR vectors to destination airport or final approach course prior to CLT VOR/DME.

RASLN THREE ARRIVAL

CHARLOTTE, NORTH CAROLINA