



WAAS CH <b>62815</b> <b>W32A</b>	APP CRS <b>325°</b>	Rwy Idg <b>6602</b> TDZE <b>1099</b> Apr Elev <b>1099</b>
--	------------------------	---

# RNAV (GPS) RWY 32

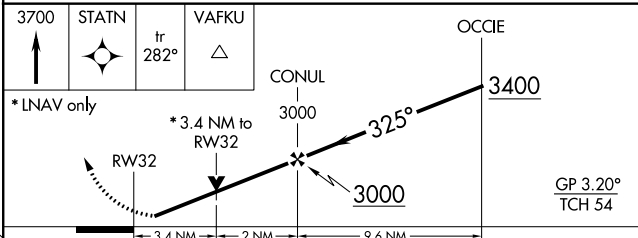
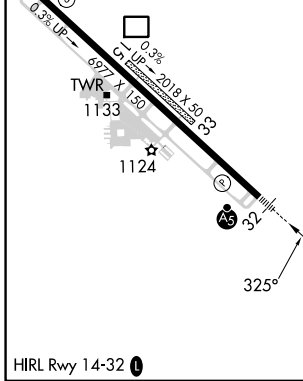
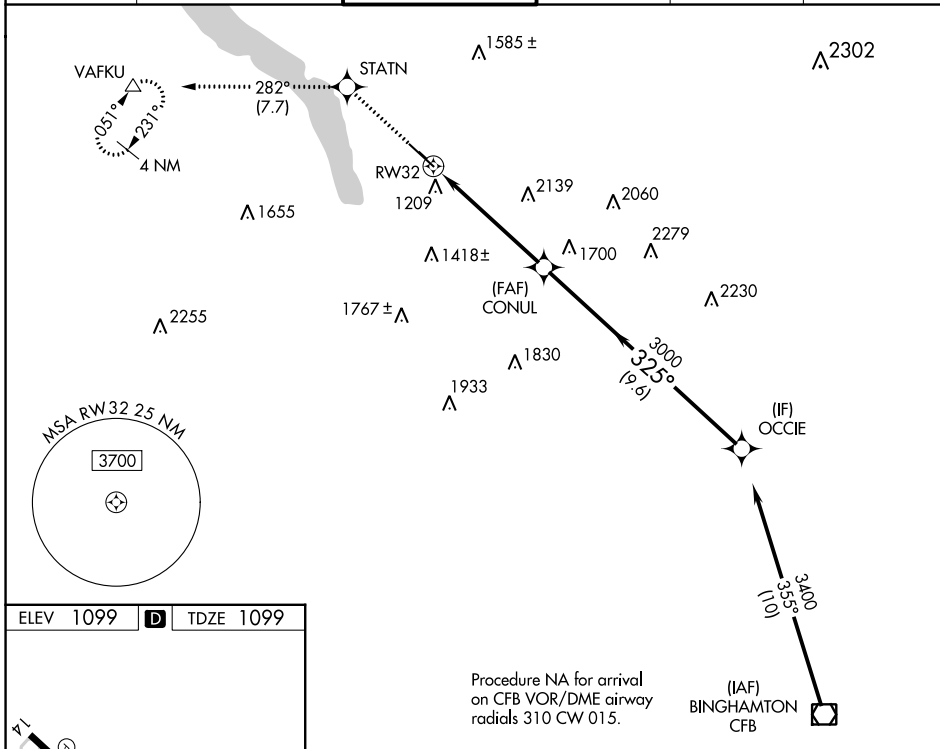
ITHACA TOMPKINS INTL (ITH)

RNP APCH

**⚠** Circling NA to Rwy 15 and 33. Inop table does not apply to LNAV Cat A. Rwy 32 helicopter visibility reduction below 3/4 SM NA. When local altimeter setting not received, use Elmira altimeter setting and increase all DA 84 feet and all MDA 100 feet. For inop MALSR, increase LNAV Cat B visibility 1/4 mile. For inop MALSR, when using Elmira altimeter setting, increase LPV all Cats visibility to RVR 6000, and increase LNAV Cat B visibility to 1/2.

**MALSR**  
**⚠** MISSED APPROACH: Climb to 3700 direct STATN and on track 282° to VAFKU and hold.

ATIS <b>125.175</b>	ELMIRA APP CON ★ <b>124.3 257.8</b>	ITHACA TOWER ★ <b>119.6 (CTAF) 0</b>	GND CON <b>121.8</b>	CLNC DEL <b>121.8</b>	UNICOM <b>122.95</b>
------------------------	--	---	-------------------------	--------------------------	-------------------------



CATEGORY	A	B	C	D
LPV DA	1385/40		286 (300-3/4)	
LNAV MDA	2300/60 1201 (1300-1 1/4)		2300-2 1/2 1201 (1300-2 1/2)	
<b>C</b> CIRCLING	2300-1 1/4 1201 (1300-1 1/4)		2300-3 1201 (1300-3) 2440-3 1341 (1400-3)	

NE-2, 23 MAR 2023 to 20 APR 2023

NE-2, 23 MAR 2023 to 20 APR 2023

APP CRS <b>144°</b>	Rwy Idg TDZE Apt Elev	<b>6602</b> <b>1083</b> <b>1099</b>
------------------------	-----------------------------	---

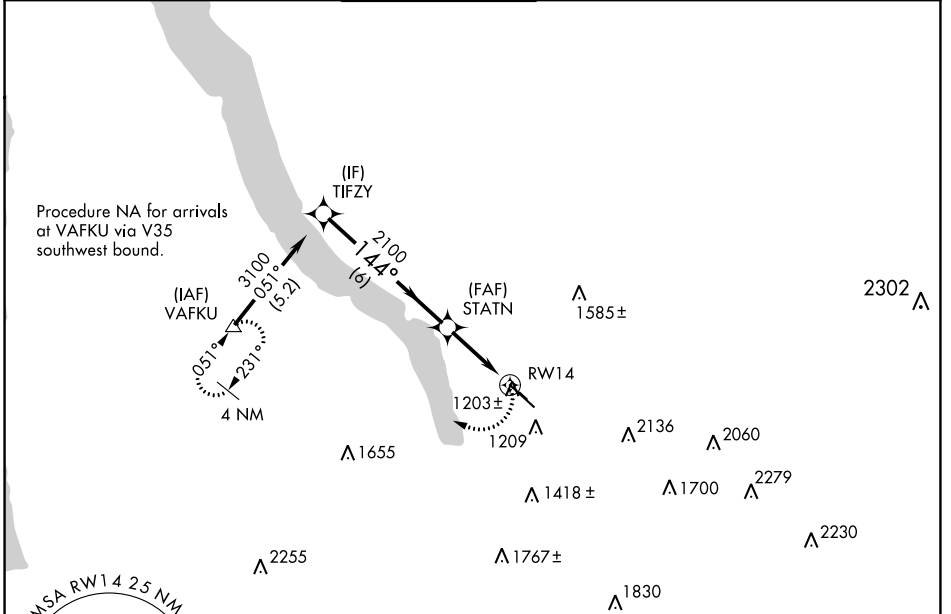
# RNAV (GPS) Y RWY 14

ITHACA TOMPKINS INTL (ITH)

DME/DME RNP-0.3 NA.  
 Helicopter visibility reduction below 3/4 SM NA.  
 -19°C  
 Circling NA to Rwys 15 and 33.

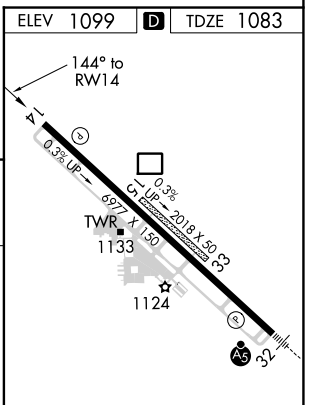
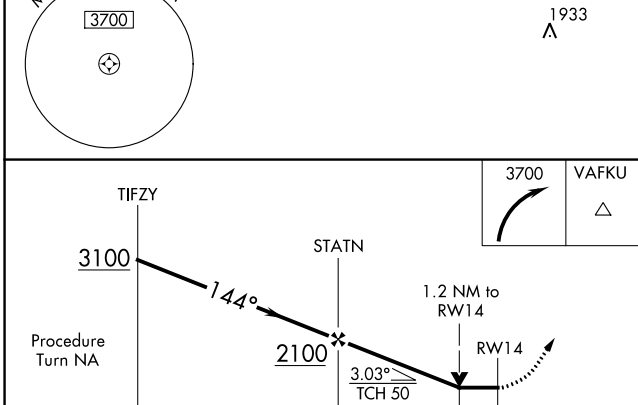
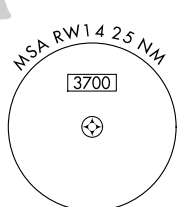
**MISSED APPROACH:**  
 Climbing right turn to 3700  
 direct VAFKU and hold.

ATIS <b>125.175</b>	ELMIRA APP CON ★ <b>124.3 257.8</b>	ITHACA TOWER ★ <b>119.6 (CTAF) 0</b>	GND CON <b>121.8</b>	CLNC DEL <b>121.8</b>	UNICOM <b>122.95</b>
------------------------	--	---	-------------------------	--------------------------	-------------------------



NE-2, 23 MAR 2023 to 20 APR 2023

NE-2, 23 MAR 2023 to 20 APR 2023



CATEGORY	A	B	C	D
LNVA MDA	1500-1	417 (500-1)	1500-1¼	417 (500-1¼)
CIRCLING	2040-1¼	941 (1000-1¼)	2040-2¾ 941 (1000-2¾)	NA

HIRL Rwy 14-32

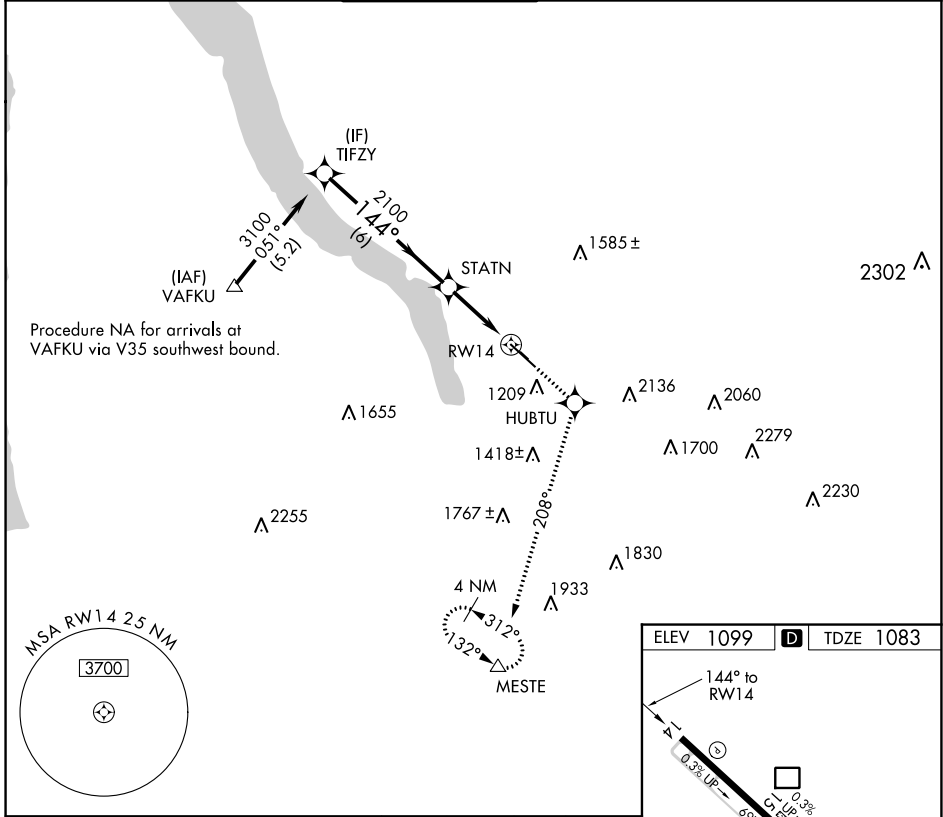
WAAS CH <b>50415</b> <b>W14A</b>	APP CRS <b>144°</b>	Rwy Idg TDZE Apt Elev	<b>6602</b> <b>1083</b> <b>1099</b>
--	------------------------	-----------------------------	---

# RNAV (GPS) Z RWY 14

ITHACA TOMPKINS INTL (ITH)

	DME/DME RNP-0.3 NA. Visibility reduction by helicopters NA. When local altimeter setting not received, use Elmira altimeter setting and increase DA 84 feet and LPV all Cats visibility 1/4 mile.	MISSED APPROACH: Climb to 3800 direct HUBTU and via track 208° to MESTE and hold.
	-19°C	

ATIS <b>125.175</b>	ELMIRA APP CON ★ <b>124.3 257.8</b>	ITHACA TOWER ★ <b>119.6</b> (CTAF) <b>0</b>	GND CON <b>121.8</b>	CLNC DEL <b>121.8</b>	UNICOM <b>122.95</b>
------------------------	--	--	-------------------------	--------------------------	-------------------------



NE-2, 23 MAR 2023 to 20 APR 2023

NE-2, 23 MAR 2023 to 20 APR 2023

