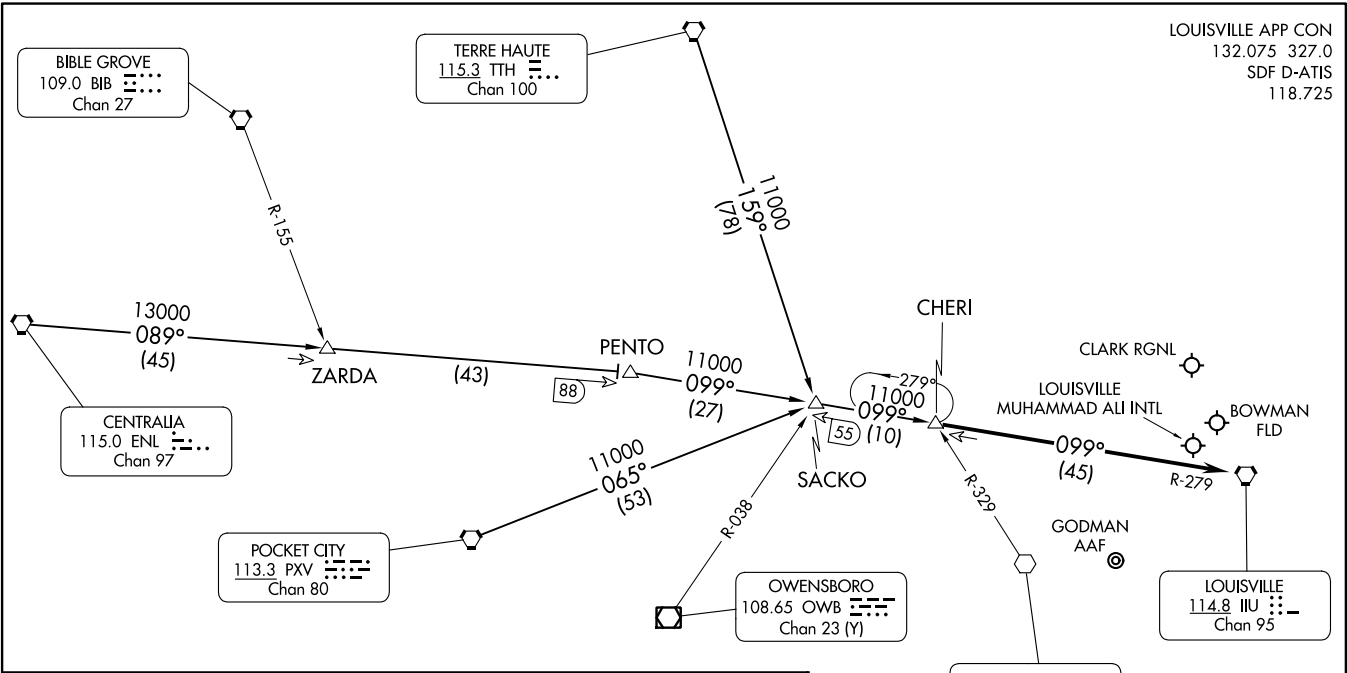


(CHERI,CHER14) 23278

AL-239 (FAA)

LOUISVILLE, KENTUCKY

LOUISVILLE APP CON
132.075 327.0
SDF D-ATIS
118.725



ARRIVAL ROUTE DESCRIPTION

CENTRALIA TRANSITION (ENL.CHER14): From over ENL VORTAC via ENL R-089 and IIU R-279 to CHERI INT. Thence. . .

POCKET CITY TRANSITION (PXV.CHER14): From over PXV VORTAC via PXV R-065 and IIU R-279 to CHERI INT. Thence. . .

TERRE HAUTE TRANSITION (TTH.CHER14): From over TTH VORTAC via TTH R-159 and IIU R-279 to CHERI INT. Thence. . .

. . . . From over CHERI INT on IIU R-279 to IIU VORTAC. Expect radar vectors.

NOTE: Radar required.

NOTE: Chart not to scale.

CHERI FOUR ARRIVAL
(CHERI,CHER14) 15AUG19

LOUISVILLE, KENTUCKY

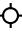
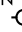

SE-1, 22 FEB 2024 to 21 MAR 2024

SE-1, 22 FEB 2024 to 21 MAR 2024

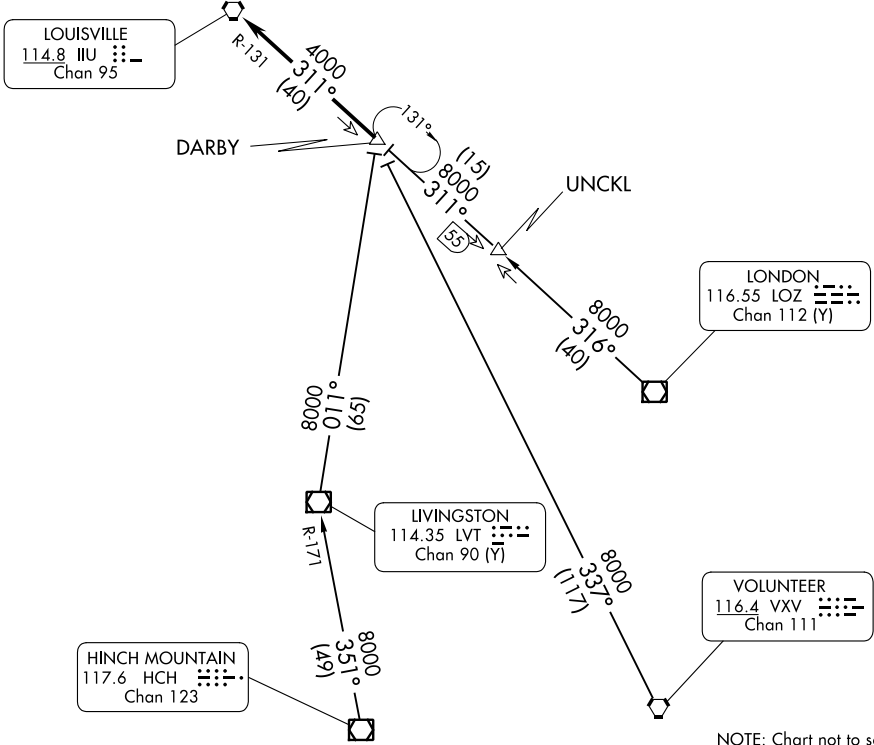
DARBY EIGHT ARRIVAL

LOUISVILLE, KENTUCKY

LOUISVILLE APP CON
 132.075 327.0
 LOU ATIS
 124.15
 SDF D-ATIS
 118.725

CLARK RGNL 
 BOWMAN FLD 
 LOUISVILLE MUHAMMAD ALI INTL 

NOTE: RADAR required.
 NOTE: DME required for LONDON and UNCKL transitions.



NOTE: Chart not to scale.

ARRIVAL ROUTE DESCRIPTION

HINCH MOUNTAIN TRANSITION (HCH.DARBY8): From over HCH VOR/DME on HCH R-351 and LVT R-171 to LVT VOR/DME, then on LVT R-011 to DARBY. Thence. . .

LONDON TRANSITION (LOZ.DARBY8): From over LOZ VOR/DME on LOZ R-316 to UNCKL, then on IIU R-131 to DARBY. Thence. . .

UNCKL TRANSITION (UNCKL.DARBY8): From over UNCKL on IIU R-131 to DARBY. Thence. . .

VOLUNTEER TRANSITION (VXV.DARBY8): From over VXV VORTAC on VXV R-337 to DARBY. Thence. . .

. . . from DARBY on IIU R-131 to IIU VORTAC. Expect RADAR vectors to final course.

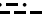
SE-1, 22 FEB 2024 to 21 MAR 2024

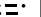
SE-1, 22 FEB 2024 to 21 MAR 2024


REDSTONE SIX ARRIVAL

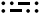
LOUISVILLE, KENTUCKY

LOUISVILLE APP CON
 132.075 327.0
 LOU ATIS
 124.15
 SDF D-ATIS
 118.725

ROSEWOOD
 117.5 ROD 
 Chan 122

CINCINNATI
 117.3 CVG 
 Chan 120

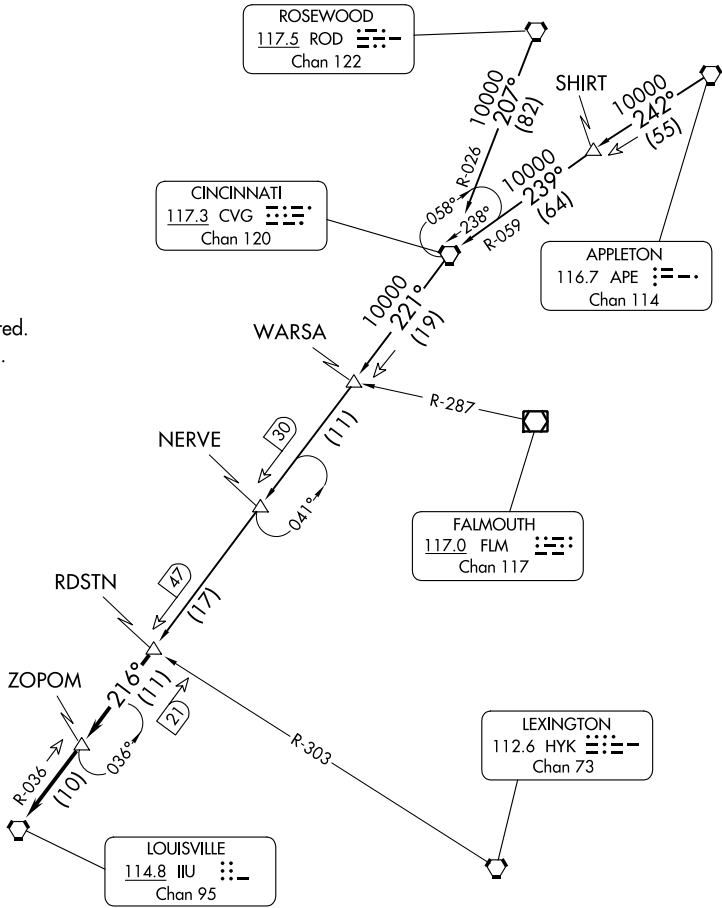
APPLETON
 116.7 APE 
 Chan 114

FALMOUTH
 117.0 FLM 
 Chan 117

LEXINGTON
 112.6 HYK 
 Chan 73

LOUISVILLE
 114.8 IIU 
 Chan 95

NOTE: RADAR required.
 NOTE: DME required.



CLARK
 RGNL

BOWMAN
 FLD

LOUISVILLE
 MUHAMMAD ALI
 INTL

NOTE: Chart not to scale.

ARRIVAL ROUTE DESCRIPTION

APPLETON TRANSITION (APE.RDSTN6): From over APE VORTAC via APE R-242 and CVG R-059 to CVG VORTAC, then via CVG R-221 to RDSTN. Thence....

CINCINNATI TRANSITION (CVG.RDSTN6): From over CVG VORTAC via CVG R-221 to RDSTN. Thence....

ROSEWOOD TRANSITION (ROD.RDSTN6): From over ROD VORTAC via ROD R-207 and CVG R-026 to CVG VORTAC, then via CVG R-221 to RDSTN. Thence....

....from over RDSTN on IIU R-036 to ZOPOM, then on IIU R-036 to IIU VORTAC.
 Expect radar vectors to final approach after ZOPOM.

REDSTONE SIX ARRIVAL

LOUISVILLE, KENTUCKY