

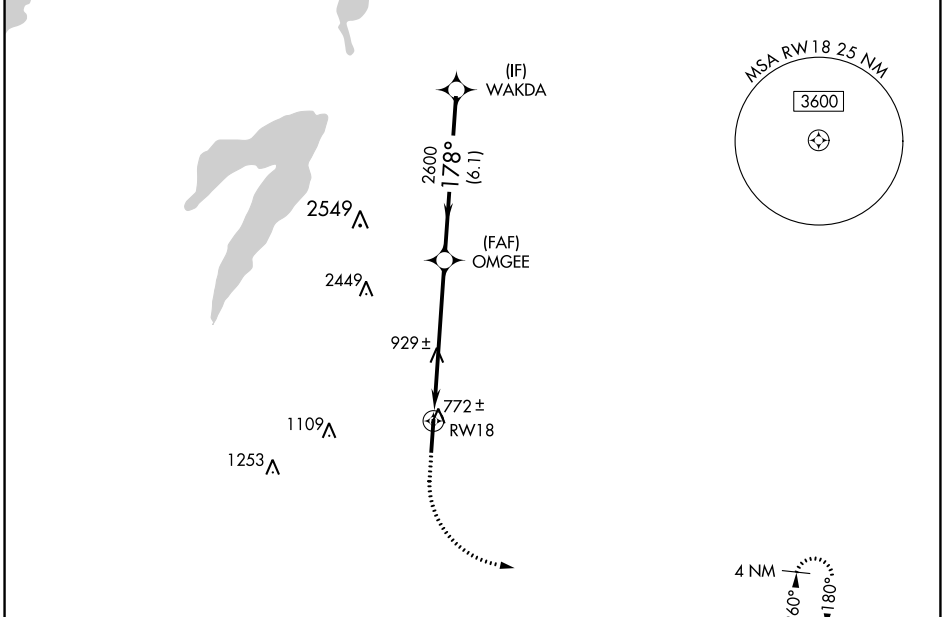
WAAS CH <b>62920</b> <b>W18A</b>	APP CRS <b>178°</b>	Rwy Idg <b>6500</b> TDZE <b>727</b> Apt Elev <b>727</b>
--	------------------------	---

# RNAV (GPS) RWY 18

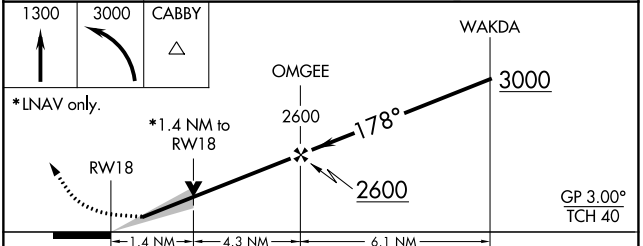
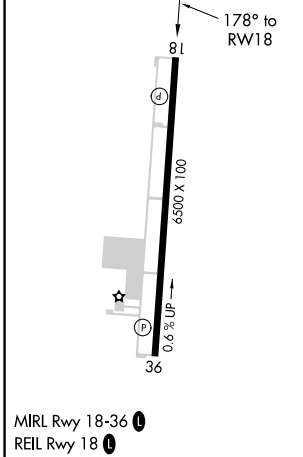
MID-WAY RGNL (JWY)

RNP APCH.		MISSED APPROACH: Climb to 1300 then climbing left turn to 3000 direct CABBY and hold.
	For uncompensated Baro-VNAV systems, LNAV/VNAV NA below -16°C or above 54°C.	

AWOS-3 <b>119.575</b>	REGIONAL APP CON <b>125.2 343.65</b>	UNICOM <b>122.975 (CTAF)</b>
--------------------------	---	---------------------------------



ELEV <b>727</b>	TDZE <b>727</b>
-----------------	-----------------



CATEGORY	A	B	C	D
LPV DA	927-3/4 200 (200-3/4)			
LNAV/VNAV DA	998-7/8 271 (300-7/8)			
LNAV MDA	1220-1	493 (500-1)	1220-1 3/8	493 (500-1 3/8)
CIRCLING	1220-1	493 (500-1)	1300-1 1/2 573 (600-1 1/2)	1420-2 1/4 693 (700-2 1/4)

WAAS CH <b>62814</b> <b>W36A</b>	APP CRS <b>358°</b>	Rwy ldg <b>6500</b> TDZE <b>703</b> Apt Elev <b>727</b>
--	------------------------	---

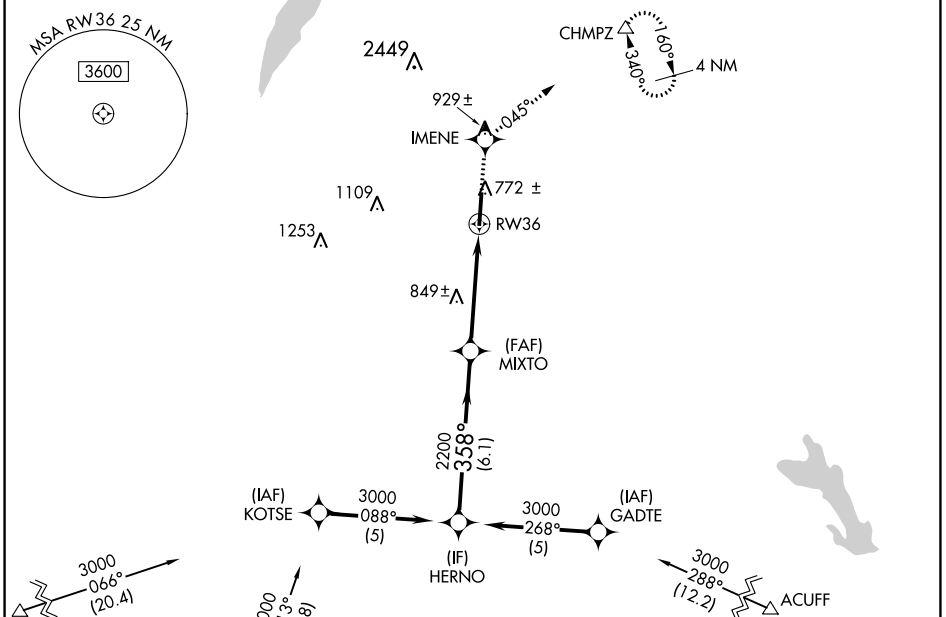
# RNAV (GPS) RWY 36

MID-WAY RGNL (JWY)

**⚠** For uncompensated Baro-VNAV systems, LNAV/VNAV NA below -16°C (4°F) or above 47°C (117°F). DME/DME RNP-0.3 NA. When local altimeter setting not received, use Dallas Love Fld altimeter setting and increase all DA 88 feet and all MDA 100 feet, increase LPV all Cats visibility ¼ mile, LNAV/VNAV all Cats visibility ½ mile, LNAV Cats C and D visibility ¼ mile, Circling Cat D visibility ¼ mile. Baro-VNAV and VDP NA when using Dallas Love Fld altimeter setting.

**MISSED APPROACH:** Climb to 3000 direct IMENE and right turn via track 045° to CHMPZ and hold, continue climb-in-hold to 3000.

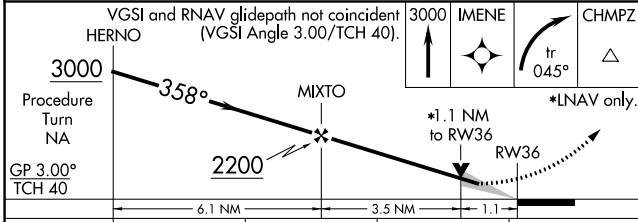
AWOS-3 <b>119.575</b>	REGIONAL APP CON <b>125.2 343.65</b>	UNICOM <b>122.975 (CTAF) 0</b>
--------------------------	---	-----------------------------------



SC-2, 22 FEB 2024 to 21 MAR 2024

SC-2, 22 FEB 2024 to 21 MAR 2024

ELEV 727	TDZE 703
----------	----------



CATEGORY	A	B	C	D
LPV DA		953-1	250 (300-1)	
LNAV/VNAV DA		992-1	289 (300-1)	
LNAV MDA	1160-1	1180-1	1300-1½	1420-2¼
CIRCLING	433 (500-1)	453 (500-1)	573 (600-1½)	693 (700-2¼)

