

EXECUTIVE ONE DEPARTURE (RNAV)
(EXTVE1.PLFMD) 25AUG11

AWOS-3
123.775
CLNC DEL
119.85
CTAF
122.8
CHARLESTON DEP CON
120.7 306.925

TAKEOFF MINIMUMS

Rwy 4: ATC climb of 500' per NM to 900.
Rwy 9: ATC climb of 500' per NM to 800.
Rwy 22: Standard with minimum climb of 245' per NM to 520. ATC climb of 500' per NM to 1300.
Rwy 27: ATC climb of 500' per NM to 1500.

- NOTE: Transponder code will be issued by Charleston clearance delivery.
- NOTE: If unable to accept climb rate, advise ATC on initial contact.
- NOTE: RNAV 1.
- NOTE: GPS required.



DEPARTURE ROUTE DESCRIPTION

TAKEOFF RUNWAY 4: Climb heading 037° to 520 MSL, then left turn direct RNDAH, cross RNDAH at or above 2000, direct GECHE and then on depicted route to PLFMD, thence. . . .

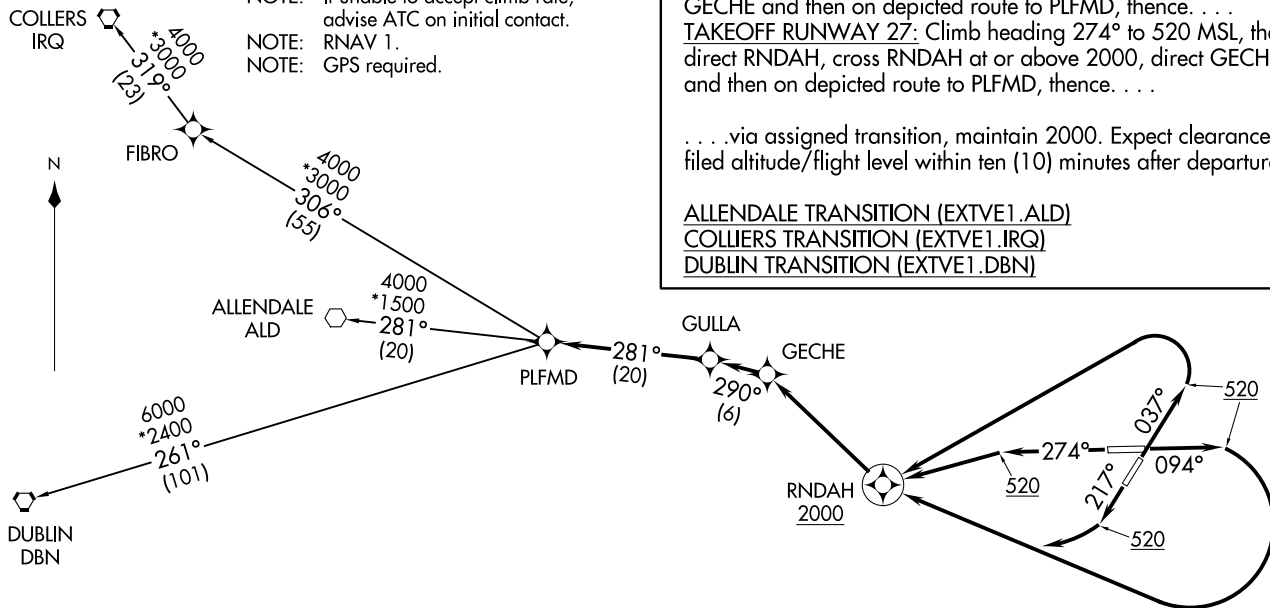
TAKEOFF RUNWAY 9: Climb heading 094° to 520 MSL, then right turn direct RNDAH, cross RNDAH at or above 2000, direct GECHE and then on depicted route to PLFMD, thence. . . .

TAKEOFF RUNWAY 22: Climb heading 217° to 520 MSL, then right turn direct RNDAH, cross RNDAH at or above 2000, direct GECHE and then on depicted route to PLFMD, thence. . . .

TAKEOFF RUNWAY 27: Climb heading 274° to 520 MSL, then direct RNDAH, cross RNDAH at or above 2000, direct GECHE and then on depicted route to PLFMD, thence. . . .

. . . .via assigned transition, maintain 2000. Expect clearance to filed altitude/flight level within ten (10) minutes after departure.

- ALLENDALE TRANSITION (EXTVE1.ALD)
- COLLIERS TRANSITION (EXTVE1.IRQ)
- DUBLIN TRANSITION (EXTVE1.DBN)



NOTE: Chart not to scale.

CHARLESTON, SOUTH CAROLINA
CHARLESTON EXEC (JZI)

(EXTVE1.PLFMD) 22363
EXECUTIVE ONE DEPARTURE (RNAV)

AL-5354 (FAA)
CHARLESTON EXEC (JZI)
CHARLESTON, SOUTH CAROLINA

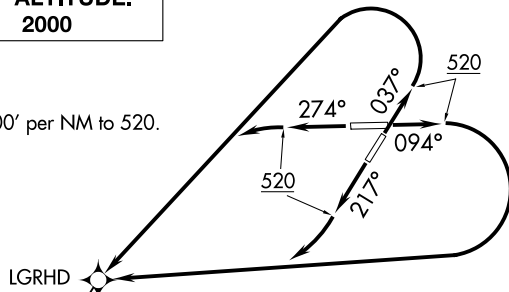
KIAWAH TWO DEPARTURE (RNAV)
(KIAWA2.LGRHD) 05NOV20

AWOS-3
123.775
CLNC DEL
119.85
CTAF
122.8
CHARLESTON DEP CON
120.7 306.925

**TOP ALTITUDE:
2000**

TAKEOFF MINIMUMS

Rwys 4, 9, 22, 27: Standard with minimum climb of 500' per NM to 520.



- NOTE: If unable to accept climb gradient, advise ATC on initial contact.
- NOTE: RNAV 1.
- NOTE: GPS required.



NOTE: Chart not to scale.

GIPPL Δ

4000
*1300
217°
(85)



DEPARTURE ROUTE DESCRIPTION

- TAKEOFF RUNWAY 4: Climb on heading 037° to 520, then left turn direct LGRHD, thence. . . .
- TAKEOFF RUNWAY 9: Climb on heading 094° to 520, then right turn direct LGRHD, thence. . . .
- TAKEOFF RUNWAY 22: Climb on heading 217° to 520, then right turn direct LGRHD, thence. . . .
- TAKEOFF RUNWAY 27: Climb on heading 274° to 520, then left turn direct LGRHD, thence. . . .

. . . .(transition). Maintain 2000.
Expect filed altitude 10 minutes after departure.

GIPPL TRANSITION (KIAWA2.GIPPL)

(KIAWA2.LGRHD) 21168
KIAWAH TWO DEPARTURE (RNAV)

AL-5354 (FAA)

CHARLESTON EXEC (JZI)
CHARLESTON SOUTH CAROLINA

CHARLESTON SOUTH CAROLINA
CHARLESTON EXEC (JZI)

(KMBEE2.KMBEE) 23334

AL-5354 (FAA)

CHARLESTON EXEC (JZI)
CHARLESTON, SOUTH CAROLINA

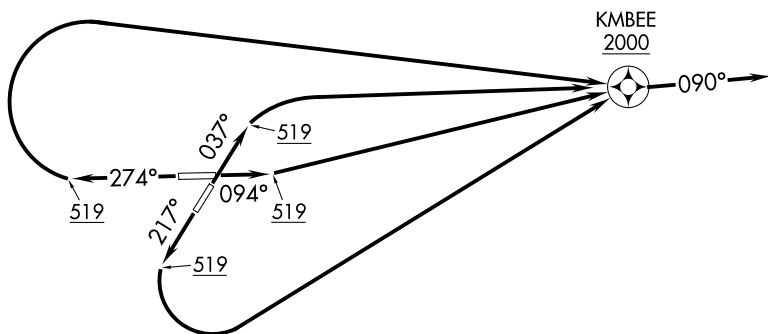
KMBEE TWO DEPARTURE (RNAV)

AWOS-3
123.775
CLNC DEL
119.85
CTAF
122.8
CHARLESTON DEP CON
121.275 379.925

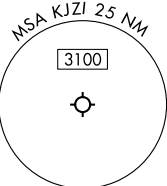
**TOP ALTITUDE:
2000**

RNAV 1 - GPS.
RADAR required.

NOTE: If unable to accept crossing restriction,
advise ATC on initial contact.



KMBEE
2000



TAKEOFF MINIMUMS:
Rwys 4, 9, 22, 27: Standard.

NOTE: Chart not to scale.

DEPARTURE ROUTE DESCRIPTION

TAKEOFF RUNWAY 4: Climb on heading 037° to 519, then right turn direct KMBEE, cross KMBEE at or above 2000, thence. . .

TAKEOFF RUNWAY 9: Climb on heading 094° to 519, then direct KMBEE, cross KMBEE at or above 2000, thence. . .

TAKEOFF RUNWAY 22: Climb on heading 217° to 519, then left turn direct KMBEE, cross KMBEE at or above 2000, thence. . .

TAKEOFF RUNWAY 27: Climb on heading 274° to 519, then right turn direct KMBEE, cross KMBEE at or above 2000, thence. . .

. . . fly heading 090° or as assigned by ATC for RADAR vectors, maintain 2000.
Expect filed altitude 10 minutes after departure.

KMBEE TWO DEPARTURE (RNAV)

(KMBEE2.KMBEE) 30NOV23

CHARLESTON, SOUTH CAROLINA
CHARLESTON EXEC (JZI)

SE-2, 22 FEB 2024 to 21 MAR 2024

SE-2, 22 FEB 2024 to 21 MAR 2024