

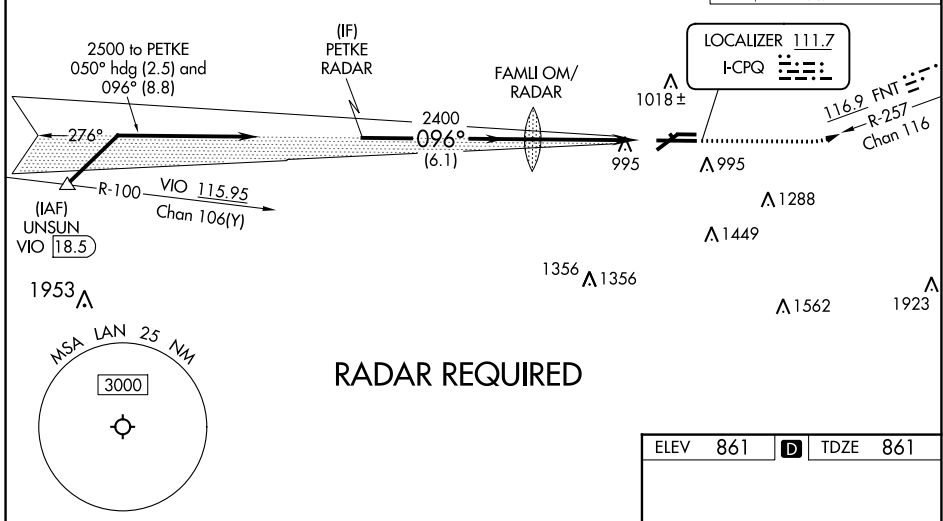
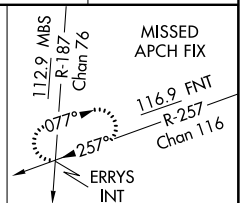
LOC I-CPQ 111.7	APP CRS 096°	Rwy Idg TDZE Apt Elev	8506 861 861
---------------------------	------------------------	-----------------------------	---

ILS or LOC RWY 10R

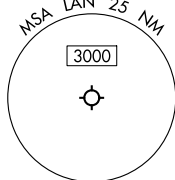
CAPITAL REGION INTL (LAN)

	Circling Rwy 10L, 28R NA at night. ** RVR 1800 authorized with use of FD or AP or HUD to DA.	MALSRR 	MISSED APPROACH: Climb to 2000 then climbing left turn to 2700 on heading 070° and on FNT VORTAC R-257 to ERRYS INT and hold.

ATIS 119.75	GREAT LAKES APP CON * 118.65 226.4	LANSING TOWER 119.9 240.9	GND CON 121.9	CLNC DEL 123.675
-----------------------	--	-------------------------------------	-------------------------	----------------------------

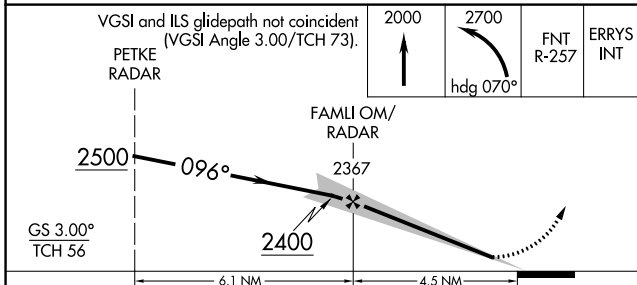


RADAR REQUIRED



EC-1, 22 FEB 2024 to 21 MAR 2024

EC-1, 22 FEB 2024 to 21 MAR 2024



ELEV 861	D	TDZE 861			
REIL Rwy 6 and 24 HIRL Rwy 10R-28L MIRL Rwy 6-24 FAF to MAP 4.5 NM					
Knots	60	90	120	150	180
Min:Sec	4:30	3:00	2:15	1:48	1:30

CATEGORY	A	B	C	D
S-ILS 10R**	1061/24		200 (200-½)	
S-LOC 10R	1340/24	479 (500-½)	1340/50	479 (500-1)
C CIRCLING	1380-1	519 (600-1)	1600-2 739 (800-2)	1760-3 899 (900-3)

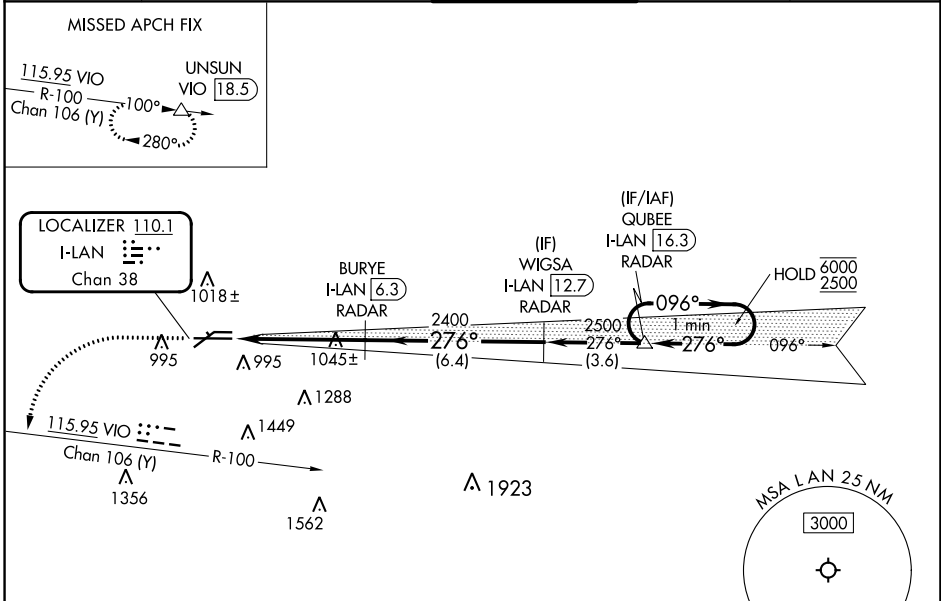
LOC/DME I-LAN 110.1 Chan 38	APP CRS 276°	Rwy ldg 8506 TDZE 852 Apt Elev 861
---	------------------------	---

ILS or LOC RWY 28L

CAPITAL REGION INTL (LAN)

DME required. RADAR required for procedure entry.		MALSR	MISSED APPROACH: Climb to 2500 then climbing left turn to 3000 on VIO VOR/DME R-100 to UNSUN/VIO 18.5 DME and hold.	
<p>Circling Rwy 10L, 28R NA at night. *RVR 1800 authorized with use of FD or AP or HUD to DA.</p>				

ATIS 119.75	GREAT LAKES APP CON * 118.65 226.4	LANSING TOWER 119.9 240.9	GND CON 121.9	CLNC DEL 123.675
-----------------------	--	-------------------------------------	-------------------------	----------------------------



ELEV 861	D	TDZE 852
----------	----------	----------

REIL Rwy 6 and 24
HIRL Rwy 10R-28L
MIRL Rwy 6-24

FAF to MAP 4.7 NM

Knots	60	90	120	150	180
Min:Sec	4:42	3:08	2:21	1:53	1:34

2500	3000	VIO R-100	UNSUB	WIGSA I-LAN 12.7 RADAR	QUBEE I-LAN 16.3 RADAR	One Minute Holding Pattern
CATEGORY	A	B	C	D		
S-ILS 28L*	1052/24 200 (200-1/2)					
S-LOC 28L	1300/24 448 (500-1/2)		1300/45 448 (500-3/8)			
C CIRCLING	1380-1 519 (600-1)		1600-2 739 (800-2)		1760-3 899 (900-3)	

EC-1, 22 FEB 2024 to 21 MAR 2024

EC-1, 22 FEB 2024 to 21 MAR 2024

WAAS CH 61314 W10A	APP CRS 096°	Rwy Idg TDZE Apt Elev	8506 861 861
--	------------------------	-----------------------------	---

RNAV (GPS) RWY 10R

CAPITAL REGION INTL (LAN)

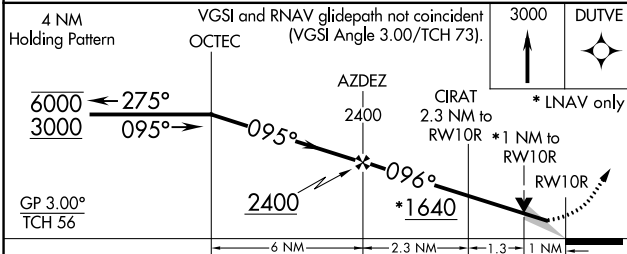
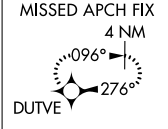
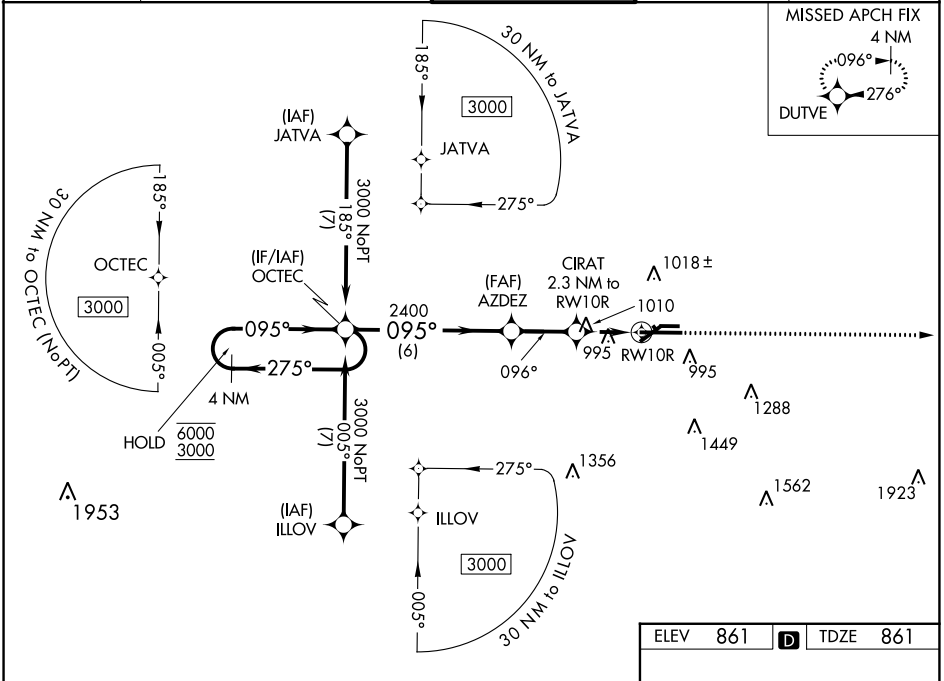
RNP APCH.

⚠ Circling Rwy 10L, 28R NA at night. For uncompensated Baro-VNAV systems, LNAV/VNAV NA below -19°C or above 54°C. For inop ALS, increase LNAV/VNAV all Cats visibility to RVR 4500. ** RVR 1800 authorized with use of FD or AP or HUD to DA.

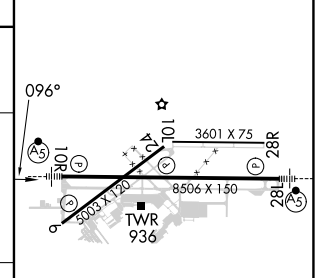


MISSED APPROACH:
Climb to 3000 direct
DUTVE and hold.

ATIS 119.75	GREAT LAKES APP CON ★ 118.65 226.4	LANSING TOWER 119.9 240.9	GND CON 121.9	CLNC DEL 123.675
-----------------------	--	-------------------------------------	-------------------------	----------------------------



ELEV	861	D	TDZE	861
------	-----	----------	------	-----



CATEGORY	A	B	C	D
LPV DA **		1061/24	200 (200-½)	
LNAV/VNAV DA		1172/24	311 (400-½)	
LNAV MDA	1260/24	399 (400-½)	1260/35	399 (400-¾)
C CIRCLING	1320-1 459 (600-1)	1380-1 519 (600-1)	1600-2 739 (800-2)	1760-3 899 (900-3)

MIRL Rwy 6-24
HIRL Rwy 10R-28L
REIL Rwy 6 and 24

EC-1, 22 FEB 2024 to 21 MAR 2024

EC-1, 22 FEB 2024 to 21 MAR 2024

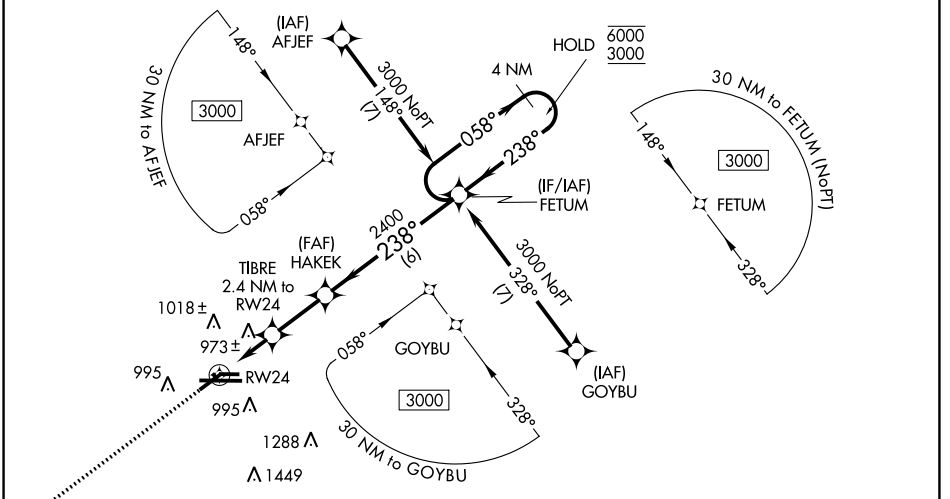
WAAS CH 50413 W24A	APP CRS 238°	Rwy Idg TDZE Apt Elev	5002 857 861
--	------------------------	-----------------------------	---

RNAV (GPS) RWY 24

CAPITAL REGION INTL (LAN)

RNP APCH.		<p>⚠ Circling Rwy 10L, 28R NA at night. Rwy 24 helicopter visibility reduction below 3/4 SM NA. ⚠ For uncompensated Baro-VNAV systems, LNAV/VNAV NA below -22°C or above 54°C.</p>		<p>MISSED APPROACH: Climb to 3000 direct EGUTY and hold.</p>	
-----------	--	---	--	--	--

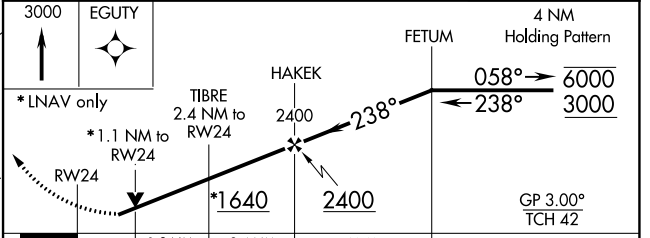
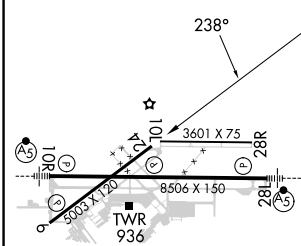
ATIS 119.75	GREAT LAKES APP CON ★ 118.65 226.4	LANSING TOWER 119.9 240.9	GND CON 121.9	CLNC DEL 123.675
-----------------------	--	-------------------------------------	-------------------------	----------------------------



EC-1, 22 FEB 2024 to 21 MAR 2024

EC-1, 22 FEB 2024 to 21 MAR 2024

ELEV 861	D	TDZE 857	MISSED APCH FIX EGUTY
----------	----------	----------	--------------------------



CATEGORY	A	B	C	D
LPV DA		1162-7/8	305 (400-7/8)	
LNAV/VNAV DA		1286-1 1/4	429 (500-1 1/4)	
LNAV MDA	1240-1	383 (400-1)	1240-1 1/8	383 (400-1 1/8)
C CIRCLING	1320-1 459 (500-1)	1380-1 519 (600-1)	1600-2 739 (800-2)	1760-3 899 (900-3)

MIRL Rwy 6-24
HIRL Rwy 10R-28L
REIL Rwy 6 and 24

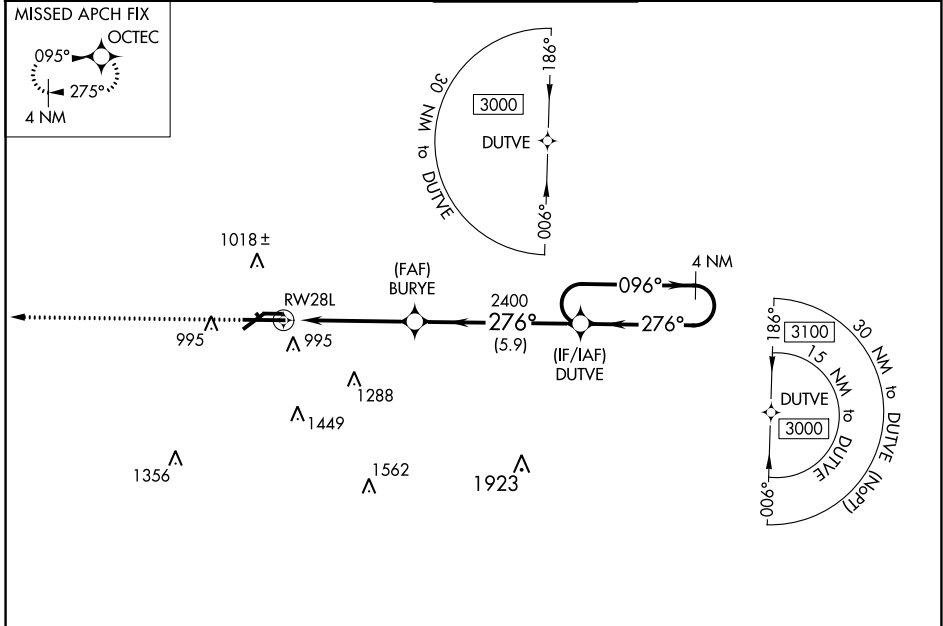
WAAS CH 40414 W28A	APP CRS 276°	Rwy Idg TDZE Apt Elev	8506 852 861
--	------------------------	-----------------------------	---

RNAV (GPS) RWY 28L

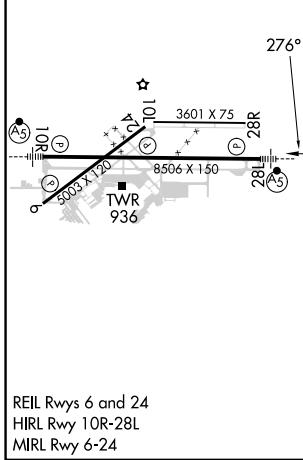
CAPITAL REGION INTL (L.A.N)

	For uncompensated Baro-VNAV systems, LNAV/VNAV NA below -19°C (-2°F) or above 54°C (130°F). DME/DME RNP-0.3 NA. Circling Rwy 10L, 28R NA at night. # RVR 1800 authorized with use of FD or AP or HUD to DA.		MISSED APPROACH: Climb to 3000 direct OCTEC and hold.

ATIS 119.75	GREAT LAKES APP CON ★ 118.65 226.4	LANSING TOWER 119.9 240.9	GND CON 121.9	CLNC DEL 123.675
-----------------------	--	-------------------------------------	-------------------------	----------------------------



ELEV 861	D	TDZE 852
----------	----------	----------



CATEGORY	A	B	C	D
LPV DA #		1052/24	200 (200-½)	
LNAV/VNAV DA		1174/28	322 (400-⅝)	
LNAV MDA	1300/24	448 (500-½)	1300/45	448 (500-⅞)
C CIRCLING	1380-1	519 (600-1)	1600-2 739 (800-2)	1760-3 899 (900-3)

EC-1, 22 FEB 2024 to 21 MAR 2024

EC-1, 22 FEB 2024 to 21 MAR 2024

WAAS CH 82118 W06A	APP CRS 058°	Rwy Idg TDZE Apt Elev	5002 859 861
--	------------------------	-----------------------------	---

RNAV (GPS) RWY 6

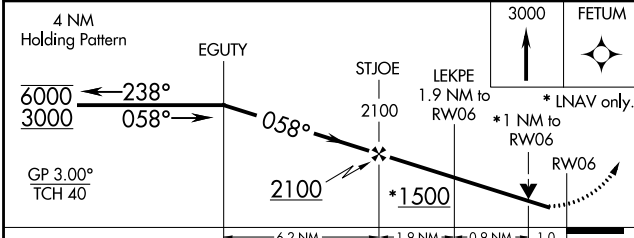
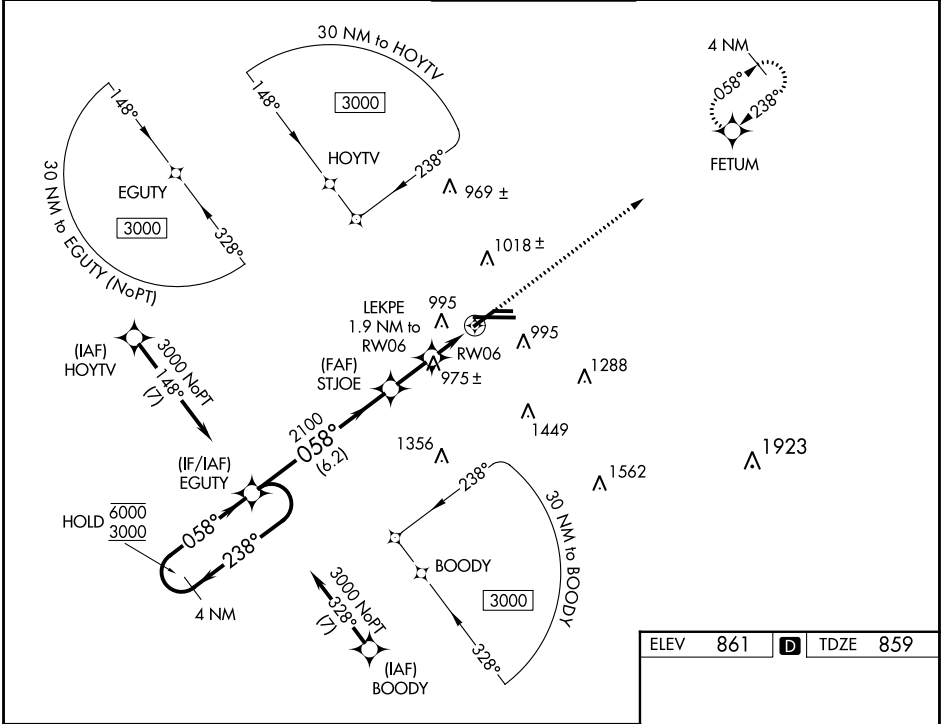
CAPITAL REGION INTL (LAN)

RNP APCH.

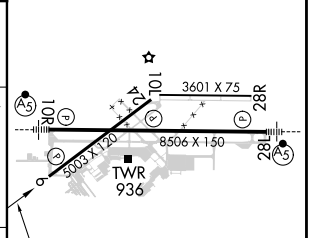
⚠ Circling Rwy 10L, 28R NA at night. Rwy 6 helicopter visibility reduction below $\frac{3}{4}$ SM NA.
⚠ For uncompensated Baro-VNAV systems, LNAV/VNAV NA below -21°C or above 54°C.

MISSED APPROACH:
Climb to 3000 direct FETUM and hold.

ATIS 119.75	GREAT LAKES APP CON * 118.65 226.4	LANSING TOWER 119.9 240.9	GND CON 121.9	CLNC DEL 123.675
-----------------------	--	-------------------------------------	-------------------------	----------------------------



ELEV 861	D TDZE 859
----------	-------------------



CATEGORY	A	B	C	D
LPV DA		1109- $\frac{3}{4}$	250 (300- $\frac{3}{4}$)	
LNAV/VNAV DA		1260-1 $\frac{1}{8}$	401 (400-1 $\frac{1}{8}$)	
LNAV MDA		1220-1	361 (400-1)	
C CIRCLING	1320-1 459 (500-1)	1380-1 519 (600-1)	1600-2 739 (800-2)	1760-3 899 (900-3)

MIRL Rwy 6-24
HIRL Rwy 10R-28L
REL Rws 6 and 24

EC-1, 22 FEB 2024 to 21 MAR 2024

EC-1, 22 FEB 2024 to 21 MAR 2024