

WAYNE, NEBRASKA

AL-6431 (FAA)

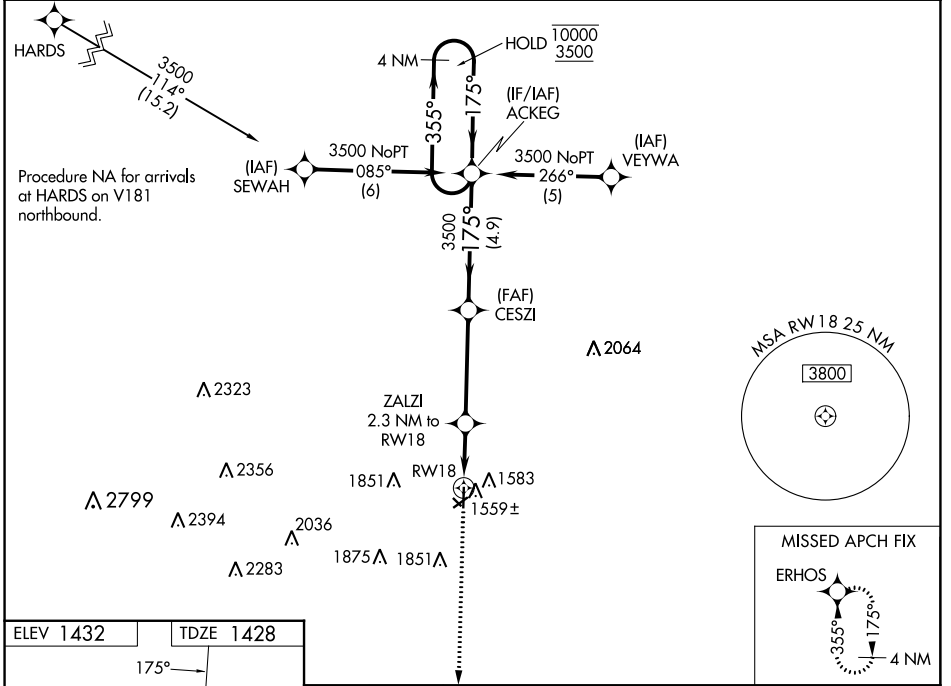
23110

WAAS CH <b>77513</b> W18A	APP CRS <b>175°</b>	Rwy Idg TDZE Apt Elev	<b>4201</b> <b>1428</b> <b>1432</b>
---------------------------------	------------------------	-----------------------------	---

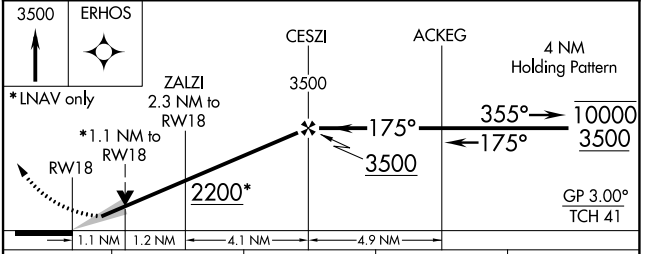
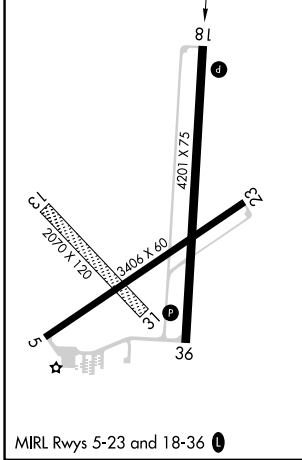
# RNAV (GPS) RWY 18

WAYNE MUNI/STAN MORRIS FLD (L,C,G)

RNP APCH. Circling NA to Rwy's 13 and 31. For uncompensated Baro-VNAV systems, LNAV/VNAV NA below -17°C or above 54°C.		MISSED APPROACH: Climb to 3500 direct ERHOS and hold.
AWOS-3 <b>120.125</b>	SIOUX CITY APP CON ★ <b>124.6 307.0</b>	UNICOM <b>122.8 (CTAF) 0</b>



ELEV 1432	TDZE 1428
-----------	-----------



CATEGORY	A	B	C	D
LPV DA	1678-1	250 (300-1)		NA
LNAV/VNAV DA	1678-1	250 (300-1)		NA
LNAV MDA	1820-1	392 (400-1)		NA
CIRCLING	2000-1	568 (600-1)		NA

WAYNE, NEBRASKA  
Amdt 2B 21MAY20

42°14'N-96°59'W

# WAYNE MUNI/STAN MORRIS FLD (L,C,G) RNAV (GPS) RWY 18

NC-2, 22 FEB 2024 to 21 MAR 2024

NC-2, 22 FEB 2024 to 21 MAR 2024

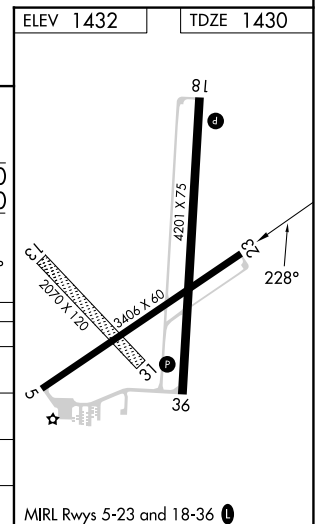
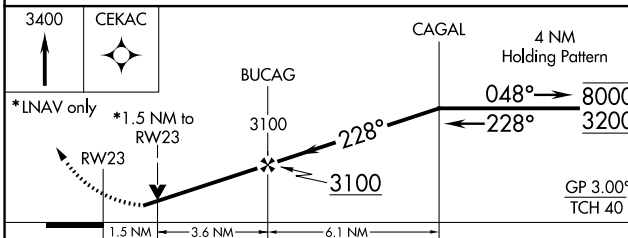
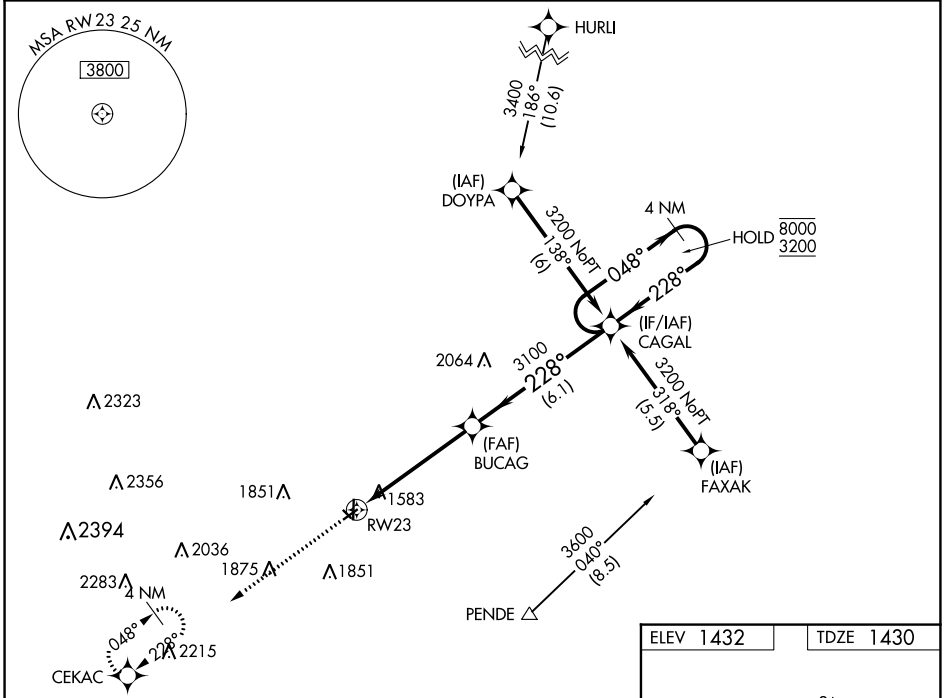
WAAS CH <b>82523</b> <b>W23A</b>	APP CRS <b>228°</b>	Rwy Idg TDZE Apt Elev	<b>3406</b> <b>1430</b> <b>1432</b>
--	------------------------	-----------------------------	---

# RNAV (GPS) RWY 23

WAYNE MUNI/STAN MORRIS FLD (L.C.G)

RNP APCH.	MISSED APPROACH: Climb to 3400 direct CEKAC and hold.
-----------	---

AWOS-3 <b>120.125</b>	SIoux CITY APP CON * <b>124.6 307.0</b>	UNICOM <b>122.8 (CTAF) 1</b>
--------------------------	--	---------------------------------



CATEGORY	A	B	C	D
LPV DA	1866-1½	436 (500-1½)		NA
LNAV/VNAV DA	1869-1½	439 (500-1½)		NA
LNAV MDA	1940-1	510 (600-1)		NA
CIRCLING	2000-1	568 (600-1)		NA

NC-2, 22 FEB 2024 to 21 MAR 2024

NC-2, 22 FEB 2024 to 21 MAR 2024

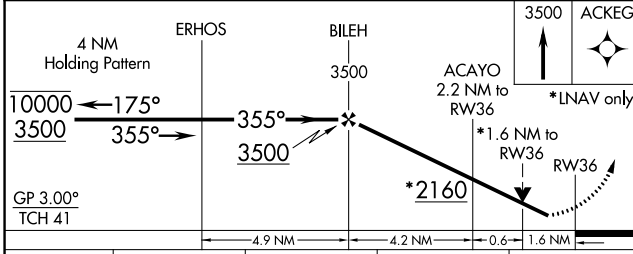
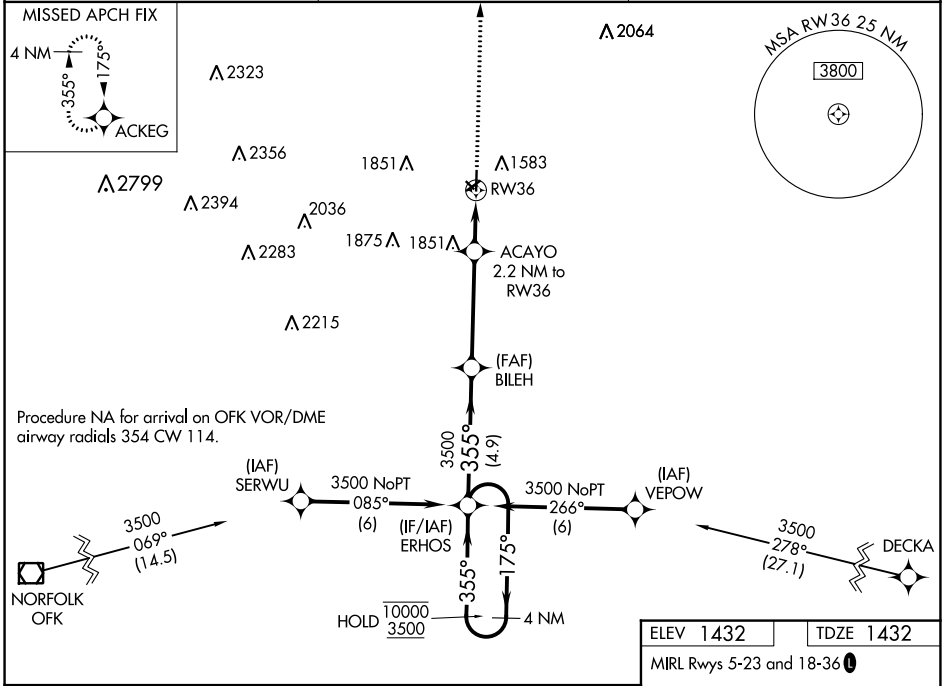
WAAS CH <b>69622</b> <b>W36A</b>	APP CRS <b>355°</b>	Rwy Idg TDZE <b>1432</b> Apt Elev <b>1432</b>
--	------------------------	---

# RNAV (GPS) RWY 36

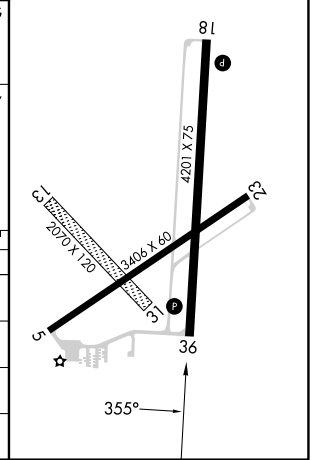
WAYNE MUNI/STAN MORRIS FLD (L/G)

RNP APCH. ▼ Circling NA to Rwys 13 and 31. Rwy 36 helicopter visibility reduction below 3/4 SM NA. For uncompensated Baro-VNAV systems, LNAV/VNAV NA below -17°C or above 54°C.	MISSED APPROACH: Climb to 3500 direct ACKEG and hold.
--	---

AWOS-3 <b>120.125</b>	SIOUX CITY APP CON * <b>124.6 307.0</b>	UNICOM <b>122.8 (CTAF) 0</b>
--------------------------	--	---------------------------------



ELEV 1432	TDZE 1432
MIRL Rwys 5-23 and 18-36 0	



CATEGORY	A	B	C	D
LPV DA	1682-1	250 (300-1)		NA
LNAV/VNAV DA	1791-1 1/4	359 (400-1 1/4)		NA
LNAV MDA	1980-1	548 (600-1)		NA
CIRCLING	2000-1	568 (600-1)		NA

NC-2, 22 FEB 2024 to 21 MAR 2024

NC-2, 22 FEB 2024 to 21 MAR 2024