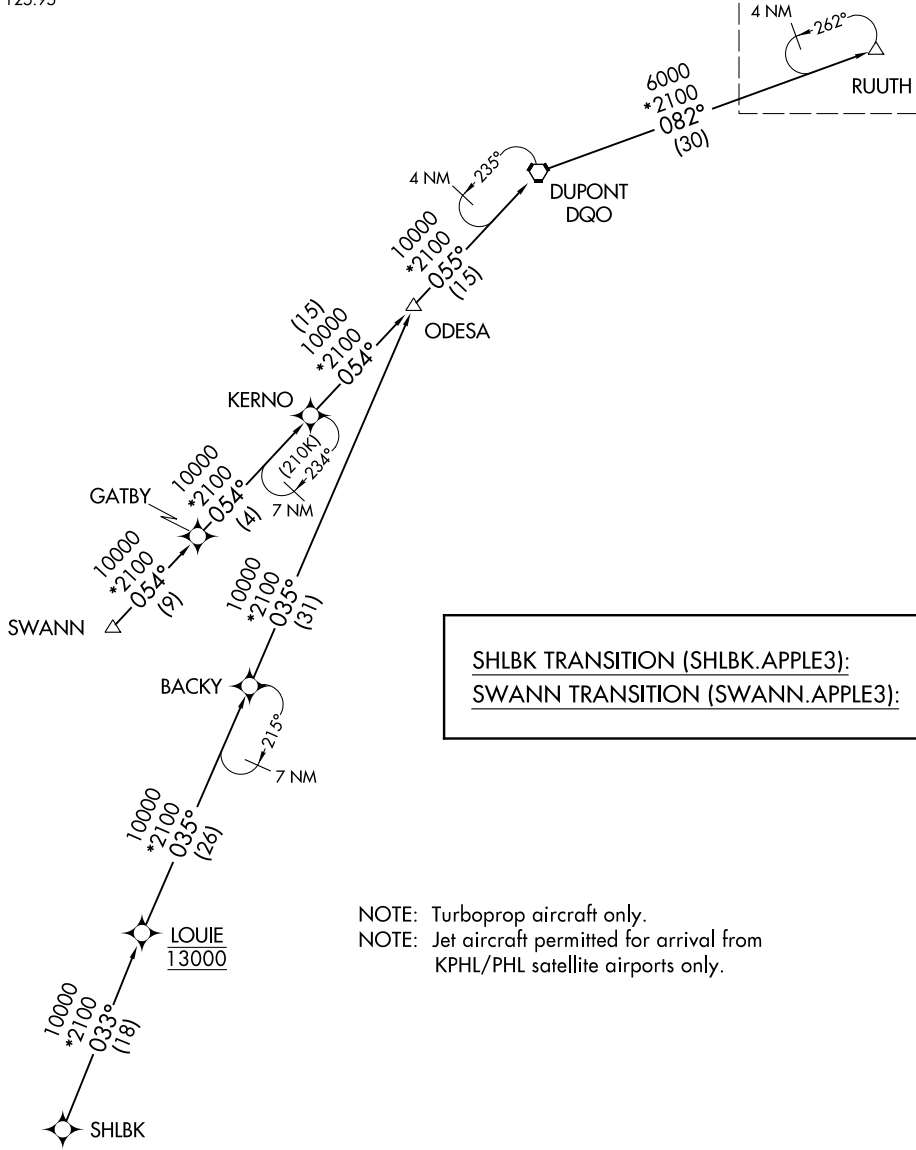


APPLE THREE ARRIVAL (RNAV) Transition Routes

PHILADELPHIA APP CON  
119.75 269.25  
POTOMAC APP CON  
124.55 317.425  
NEW YORK APP CON  
127.3 263.0  
D-ATIS ARR  
125.95

RNAV 1 - DME/DME/IRU or GPS.  
RADAR required.

See following page  
for Arrival Route.  
4 NM  
262°  
RUUTH



SHLBK TRANSITION (SHLBK.APPLE3):  
SWANN TRANSITION (SWANN.APPLE3):

NOTE: Turboprop aircraft only.  
NOTE: Jet aircraft permitted for arrival from  
KPHL/PHL satellite airports only.

(CONTINUED ON FOLLOWING PAGE)

NOTE: Chart not to scale.

NE-2, 22 FEB 2024 to 21 MAR 2024

NE-2, 22 FEB 2024 to 21 MAR 2024

(RUUTH.APPLE3) 24025

AL-289 (FAA)

LAGUARDIA (LGA)

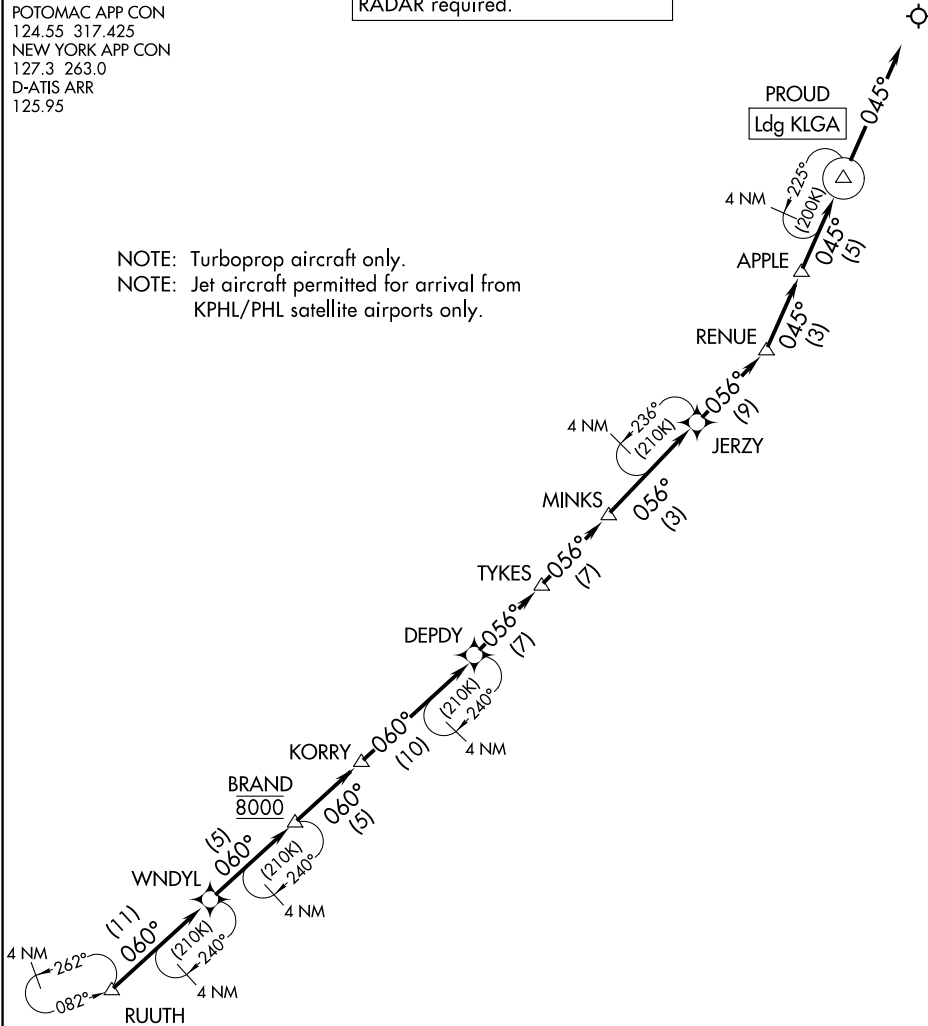
# APPLE THREE ARRIVAL (RNAV) Arrival Routes

NEW YORK, NEW YORK

PHILADELPHIA APP CON  
 119.75 269.25  
 POTOMAC APP CON  
 124.55 317.425  
 NEW YORK APP CON  
 127.3 263.0  
 D-ATIS ARR  
 125.95

RNAV 1 - DME/DME/IRU or GPS.  
 RADAR required.

NOTE: Turboprop aircraft only.  
 NOTE: Jet aircraft permitted for arrival from  
 KPHL/PHL satellite airports only.



NOTE: Chart not to scale.

## ARRIVAL ROUTE DESCRIPTION

From RUUTH on track 060° to WNDYL, then on track 060° to cross BRAND at 8000, then on track 060° to KORRY, then on track 060° to DEPDI, then on track 056° to TYKES, then on track 056° to MINKS, then on track 056° to JERZY, then on track 056° to RENUUE, then on track 045° to APPLE, then on track 045° to PROUD, then on track 045°. Expect RADAR vectors to final approach course.

# APPLE THREE ARRIVAL (RNAV) Arrival Routes

(RUUTH.APPLE3) 25JAN24

NEW YORK, NEW YORK

LAGUARDIA (LGA)

NE-2, 22 FEB 2024 to 21 MAR 2024

NE-2, 22 FEB 2024 to 21 MAR 2024

(VALRE.HAARP4) 23334

AL-289 (FAA)

LAGUARDIA (LGA)

NEW YORK, NEW YORK

# HAARP FOUR ARRIVAL

NEW YORK APP CON  
 120.8 263.0  
 BOSTON CENTER  
 128.1 351.7  
 D-ATIS  
 125.95

ALBANY  
 115.3 ALB  
 Chan 100

RADAR required.  
 DME required.

ROCKDALE  
 112.6 RKA  
 Chan 73

CYPER  
 Jet aircraft:  
 Expect to cross at lowest  
 useable flight level.

CHESTER  
 115.1 CTR  
 Chan 98

PAWLING  
 114.3 PWL  
 Chan 90

KINGSTON  
 117.6 IGN  
 Chan 123

HUGUENOT  
 116.1 HUO  
 Chan 108

BASYE  
 Jet aircraft:  
 Expect 8000

NOTE: STAR applicable to jet  
 and non-jet aircraft  
 capable of operating at  
 250K or greater.

LA GUARDIA  
 113.1 LGA  
 Chan 78

NOTE: Chart not to scale.

**ALBANY TRANSITION (ALB.HAARP4):** From over ALB VORTAC on ALB R-184 to STOTT, then on PWL R-003 to PWL VOR/DME, then on PWL R-250 and IGN R-070 to IGN VOR/DME, then on IGN R-203 to VALRE, thence....

**ROCKDALE TRANSITION (RKA.HAARP4):** From over RKA VOR/DME on RKA R-127 to CYPER, then on PWL R-316 to TRESA, then on IGN R-013 to IGN VOR/DME, then on IGN R-203 to VALRE, thence....

....From over VALRE on DPK R-338 to BASYE, then to HAARP, then on LGA R-044 to CRALY, then to LGA VOR/DME. Expect radar vectors to final approach course.

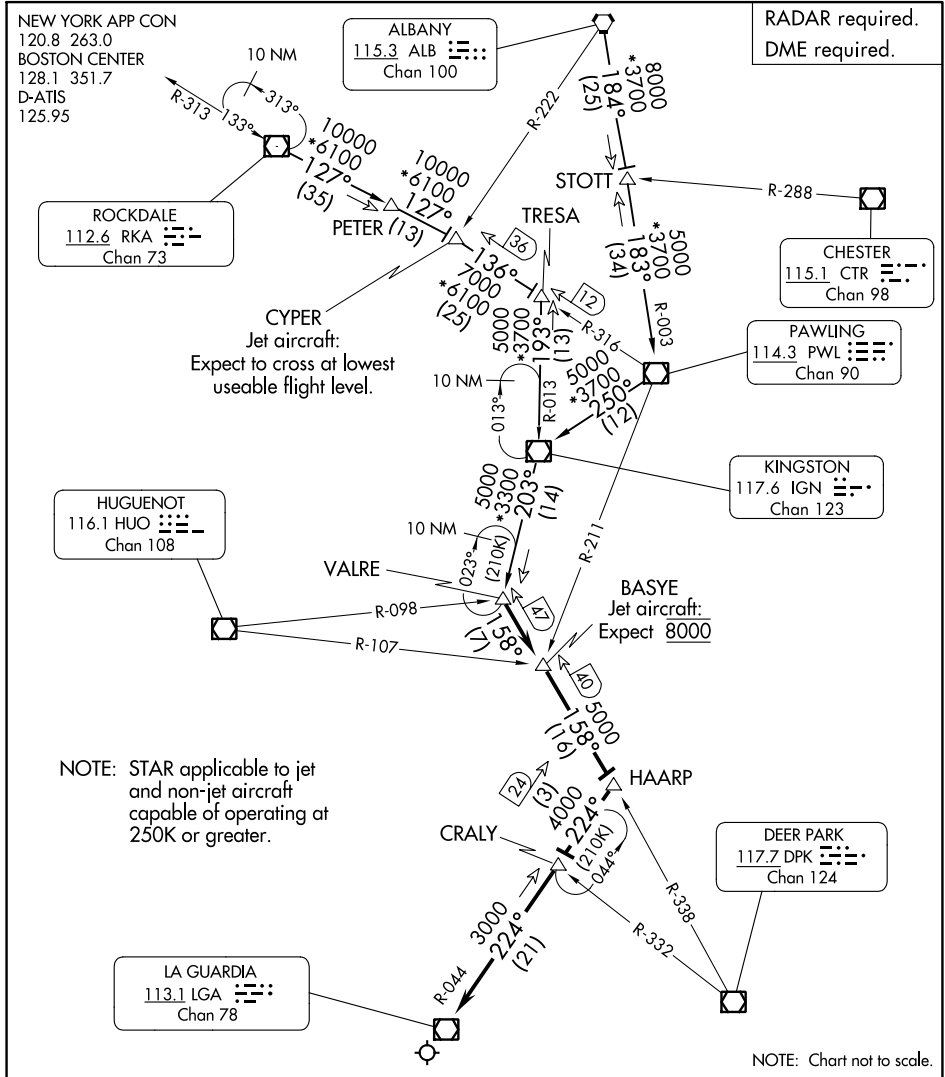
# HAARP FOUR ARRIVAL

(VALRE.HAARP4) 30NOV23

NEW YORK, NEW YORK  
LAGUARDIA (LGA)

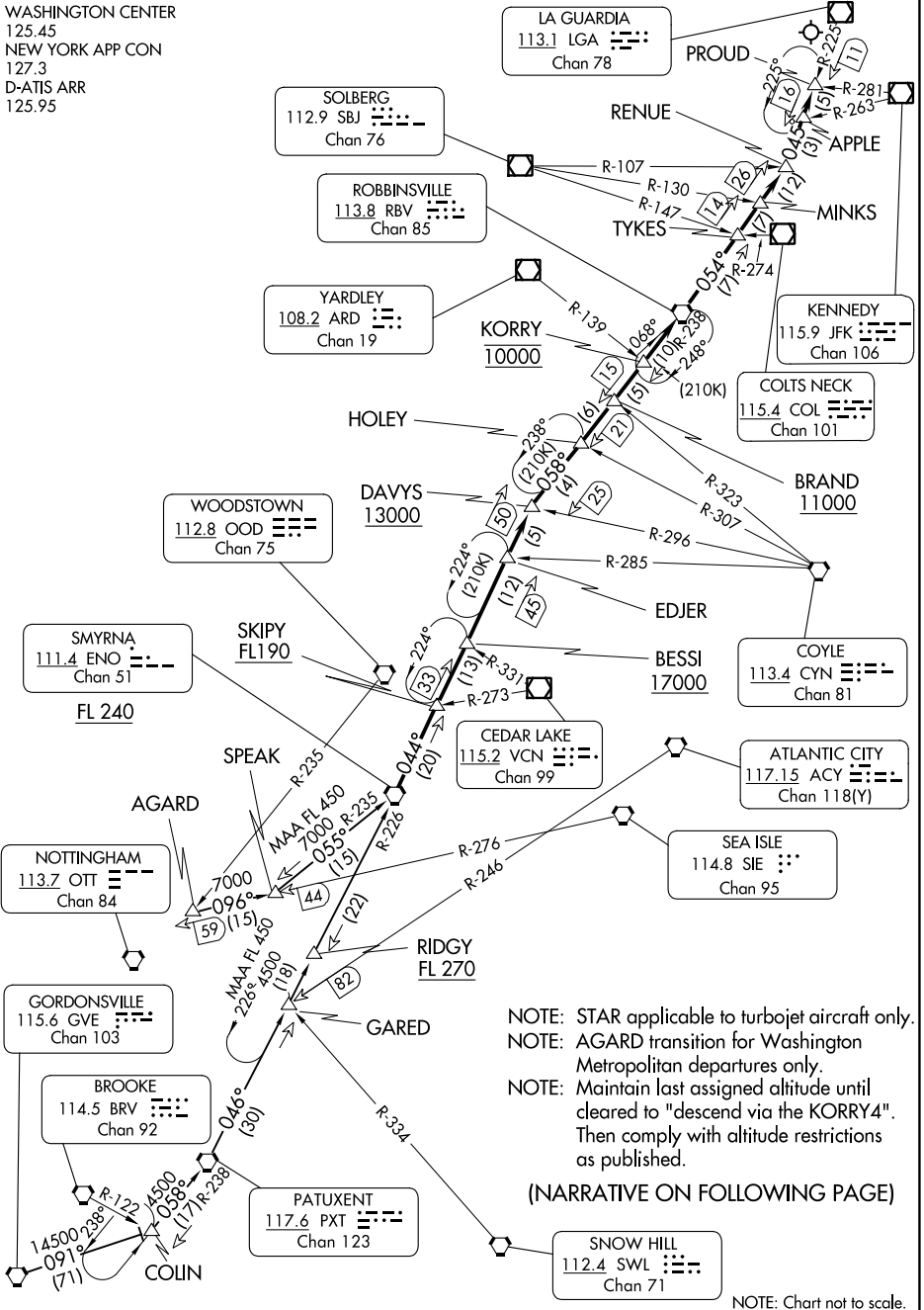
NE-2, 22 FEB 2024 to 21 MAR 2024

NE-2, 22 FEB 2024 to 21 MAR 2024



# KORRY FOUR ARRIVAL

WASHINGTON CENTER  
125.45  
NEW YORK APP CON  
127.3  
D-ATIS ARR  
125.95



NOTE: STAR applicable to turbojet aircraft only.  
NOTE: AGARD transition for Washington Metropolitan departures only.  
NOTE: Maintain last assigned altitude until cleared to "descend via the KORRY4". Then comply with altitude restrictions as published.

(NARRATIVE ON FOLLOWING PAGE)

NOTE: Chart not to scale.

NE-2, 22 FEB 2024 to 21 MAR 2024

NE-2, 22 FEB 2024 to 21 MAR 2024

# KORRY FOUR ARRIVAL

## ARRIVAL ROUTE DESCRIPTION

AGARD TRANSITION (AGARD.KORRY4): From over AGARD INT via SIE R-276 and ENO R-235 to ENO VORTAC. Thence . . . .

GORDONSVILLE TRANSITION (GVE.KORRY4): From over GVE VORTAC via GVE R-091 and PXT R-238 to PXT VORTAC, then via PXT R-046 and ENO R-226 to ENO VORTAC. Thence . . . .

PATUXENT TRANSITION (PXT.KORRY4): From over PXT VORTAC via PXT R-046 and ENO R-226 to ENO VORTAC. Thence . . . .

. . . . from over ENO VORTAC via R-044 to DAVYS INT, then via RBV R-238 to RBV VORTAC, then via RBV R-054 to RENUÉ INT, then via LGA R-225 to PROUD INT. Expect radar vectors to final approach course.

NE-2, 22 FEB 2024 to 21 MAR 2024

NE-2, 22 FEB 2024 to 21 MAR 2024

MILTON FOUR ARRIVAL  
(MIP.MIP4) 200CT11

(MIP.MIP4) 23334  
MILTON FOUR ARRIVAL

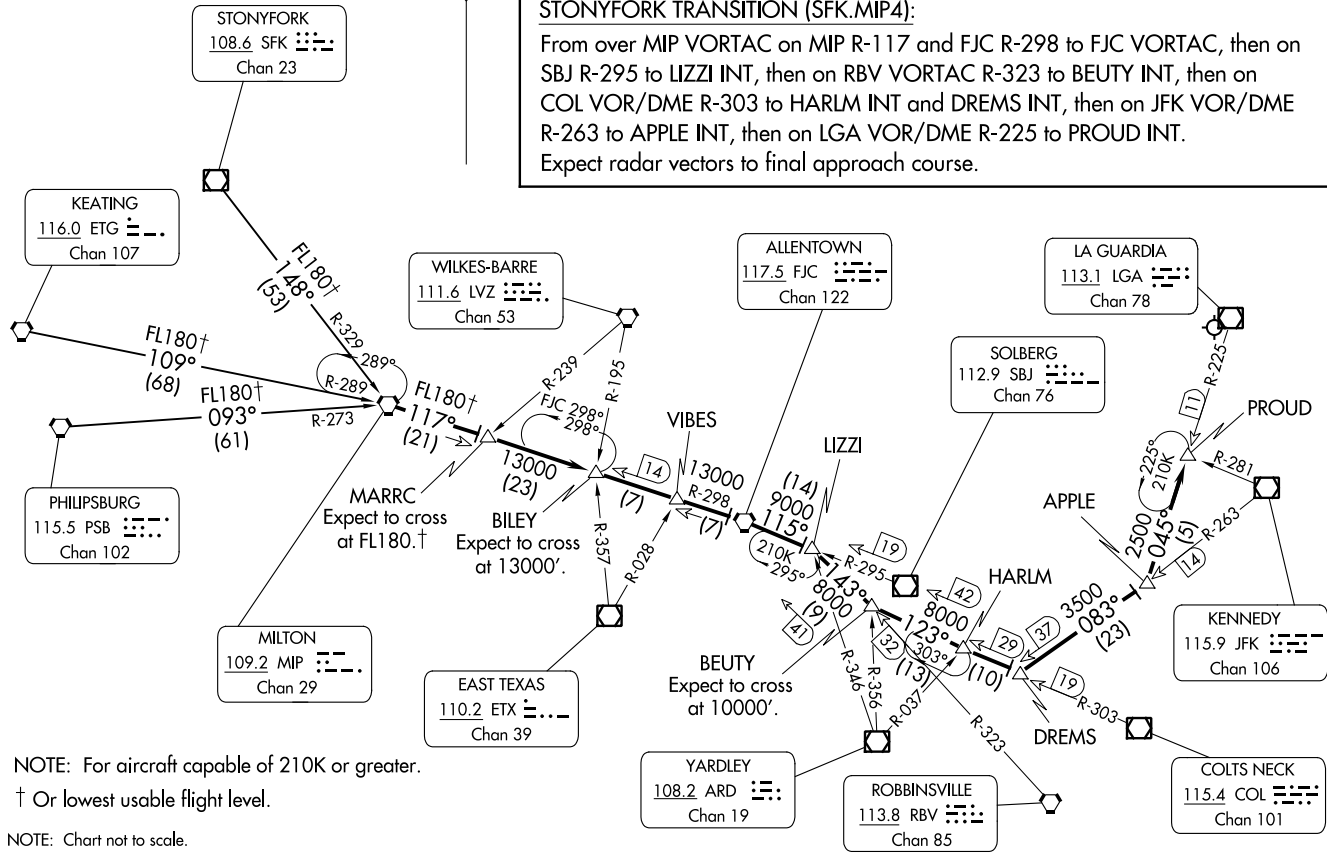
AL-289 (FAA)

LAGUARDIA (LGA)  
NEW YORK, NEW YORK

D-ATIS ARR  
125.95  
NEW YORK APP CON  
127.3 263.0

KEATING TRANSITION (ETG.MIP4):  
PHILIPSBURG TRANSITION (PSB.MIP4):  
STONYFORK TRANSITION (SFK.MIP4):

From over MIP VORTAC on MIP R-117 and FJC R-298 to FJC VORTAC, then on SBJ R-295 to LIZZI INT, then on RBV VORTAC R-323 to BEUTY INT, then on COL VOR/DME R-303 to HARLM INT and DREMS INT, then on JFK VOR/DME R-263 to APPLE INT, then on LGA VOR/DME R-225 to PROUD INT.  
Expect radar vectors to final approach course.



NOTE: For aircraft capable of 210K or greater.

† Or lowest usable flight level.

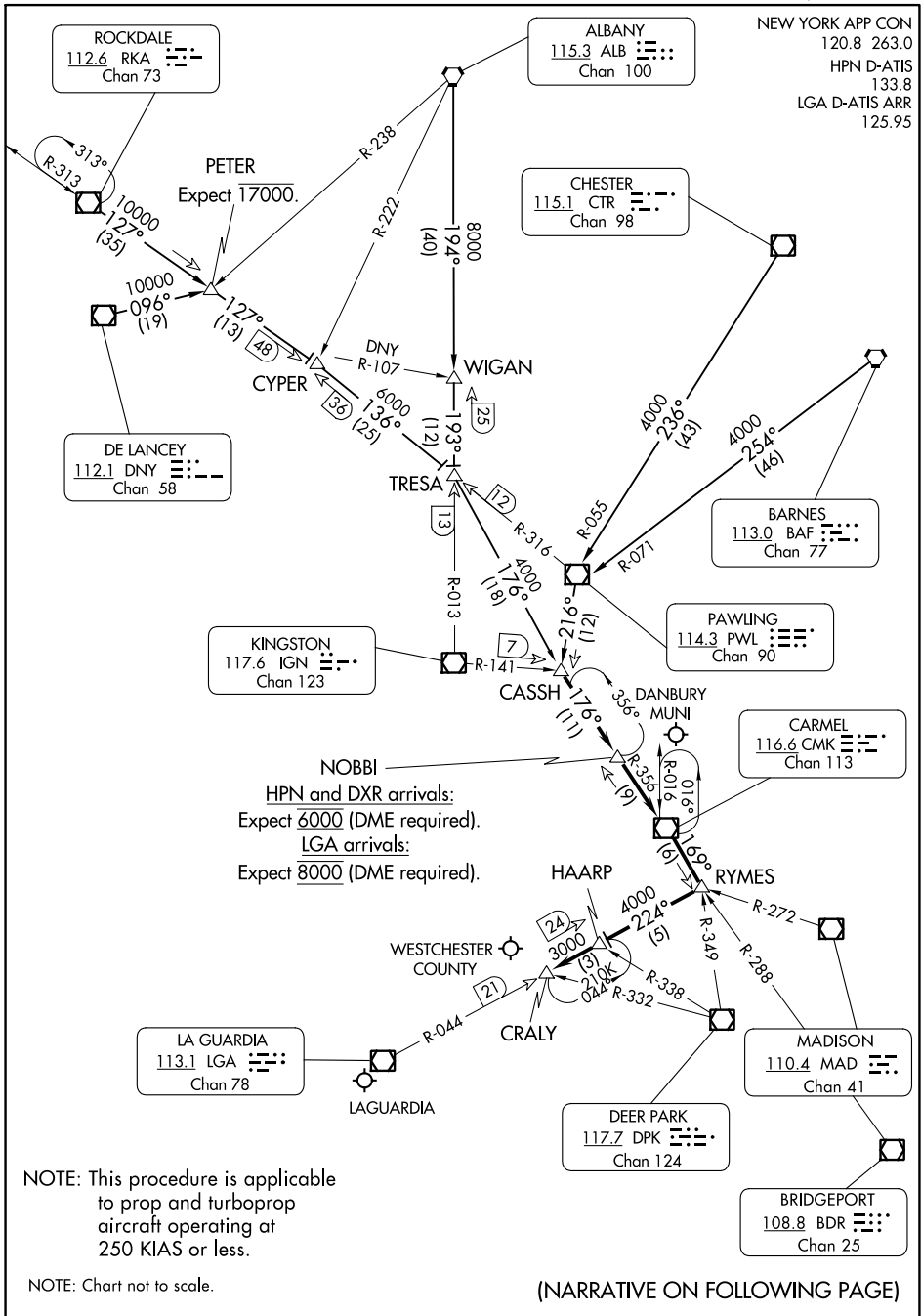
NOTE: Chart not to scale.

NEW YORK, NEW YORK  
LAGUARDIA (LGA)

# NOBBI FIVE ARRIVAL

NEW YORK, NEW YORK

NEW YORK APP CON  
 120.8 263.0  
 HPN D-ATIS  
 133.8  
 LGA D-ATIS ARR  
 125.95



NE-2, 22 FEB 2024 to 21 MAR 2024

NE-2, 22 FEB 2024 to 21 MAR 2024

(NARRATIVE ON FOLLOWING PAGE)

# NOBBI FIVE ARRIVAL

(NOBBI.NOBBI5) 25OCT07

NEW YORK, NEW YORK

ARRIVAL ROUTE DESCRIPTION

ALBANY TRANSITION (ALB.NOBBI5): From over ALB VORTAC via ALB R-194 to WIGAN INT, then via IGN R-013 to TRESA INT, then via CMK R-356 to CASSH INT. Thence. . . .

BARNES TRANSITION (BAF.NOBBI5): From over BAF VORTAC via BAF R-254 and PWL R-071 to PWL VOR/DME, then via PWL R-216 to CASSH INT. Thence. . . .

CHESTER TRANSITION (CTR.NOBBI5): From over CTR VOR/DME via CTR R-236 and PWL R-055 to PWL VOR/DME, then via PWL R-216 to CASSH INT. Thence. . . .

DE LANCEY TRANSITION (DNY.NOBBI5): From over DNY VOR/DME via DNY R-096 to PETER INT, then via RKA R-127 to CYPER INT, then via PWL R-316 to TRESA INT, then via CMK R-356 to CASSH INT. Thence. . . .

ROCKDALE TRANSITION (RKA.NOBBI5): From over RKA VOR/DME via RKA R-127 to CYPER INT, then via PWL R-316 to TRESA INT, then via CMK R-356 to CASSH INT. Thence. . . .

. . . .From over CASSH INT via CMK R-356 to CMK VOR/DME, then via CMK R-169 to RYMES INT, then via LGA VOR/DME R-044 to HAARP INT to CRALY INT. Expect radar vectors to final approach course.

NE-2, 22 FEB 2024 to 21 MAR 2024

NE-2, 22 FEB 2024 to 21 MAR 2024



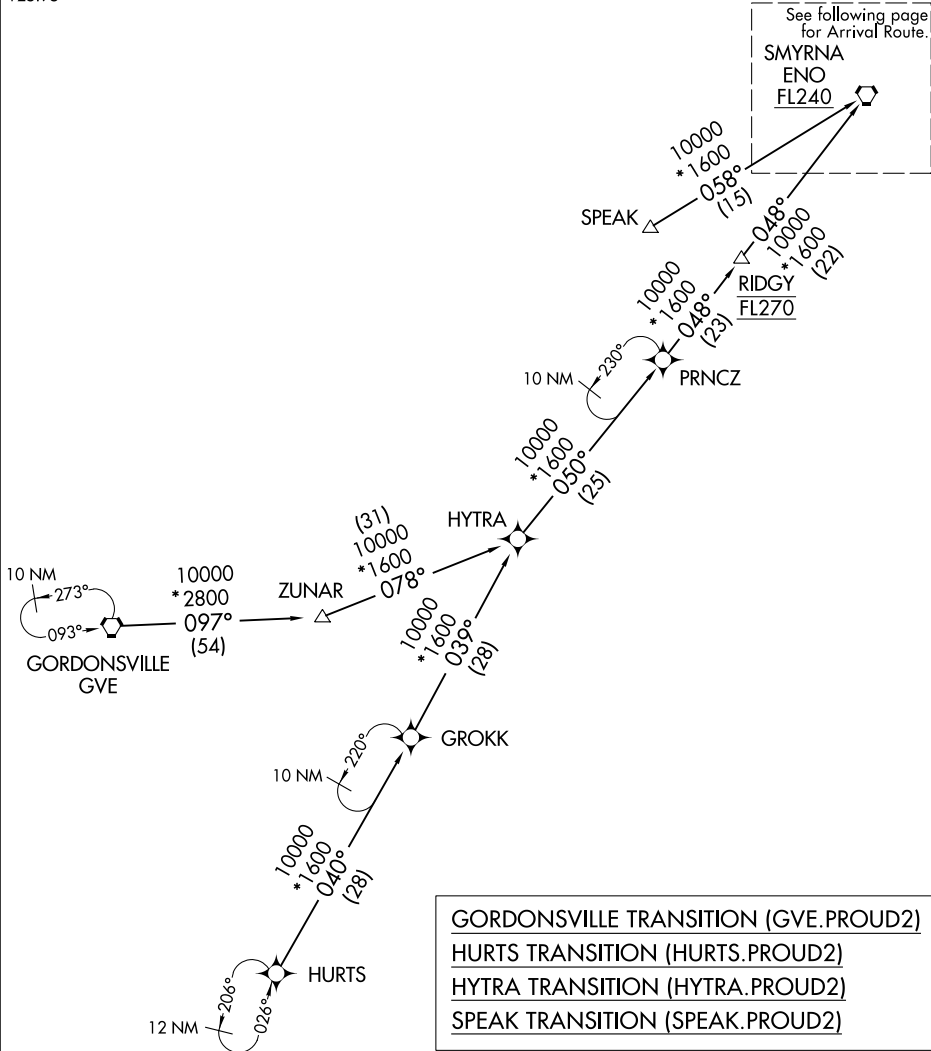
PROUD TWO ARRIVAL (RNAV) Transition Routes

NEW YORK APP CON  
127.3 263.0  
D-ATIS ARR  
125.95

RNAV 1 - DME/DME/IRU or GPS.

RADAR required.

See following page  
for Arrival Route.  
SMYRNA  
ENO  
FL240



- GORDONSVILLE TRANSITION (GVE.PROUD2)
- HURTS TRANSITION (HURTS.PROUD2)
- HYTRA TRANSITION (HYTRA.PROUD2)
- SPEAK TRANSITION (SPEAK.PROUD2)

NOTE: Jet aircraft only.  
NOTE: SPEAK transition for Washington Metropolitan departures only.

(CONTINUED ON FOLLOWING PAGE)

NOTE: Chart not to scale.

NE-2, 22 FEB 2024 to 21 MAR 2024

NE-2, 22 FEB 2024 to 21 MAR 2024

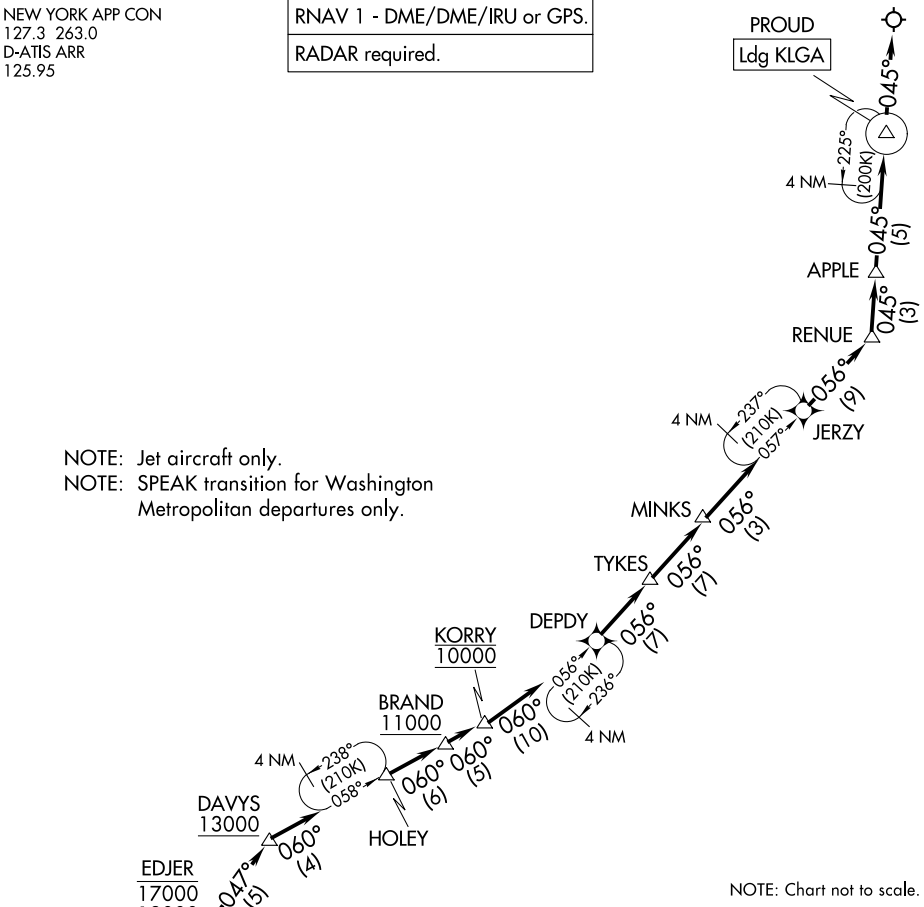
PROUD TWO ARRIVAL (RNAV) Arrival Routes

NEW YORK APP CON  
127.3 263.0  
D-ATIS ARR  
125.95

RNAV 1 - DME/DME/IRU or GPS.

RADAR required.

PROUD  
Ldg KLG A



NOTE: Jet aircraft only.  
NOTE: SPEAK transition for Washington Metropolitan departures only.

NOTE: Chart not to scale.

ARRIVAL ROUTE DESCRIPTION

From ENO VORTAC on track 047° to cross SKIPY between FL190 and FL220, then on track 048° to cross BESSI at or above 17000, then on track 046° to cross EDJER between 13000 and 17000, then on track 047° to cross DAVYS at or above 13000, then on track 060° to HOLEY, then on track 060° to cross BRAND at or above 11000, then on track 060° to cross KORRY at 10000, then on track 060° to DEPDI, then on track 056° to TYKES, then on track 056° to MINKS, then on track 056° to JERZY, then on track 056° to RENU, then on track 045° to APPLE, then on track 045° to PROUD, then on track 045°. Expect RADAR vectors to final approach course.

NE-2, 22 FEB 2024 to 21 MAR 2024

NE-2, 22 FEB 2024 to 21 MAR 2024