

LOC/DME I-MAC 111.9 Chan 56	APP CRS 105°	Rwy Idg 4184 TDZE 430 Apt Elev 437
---	------------------------	---

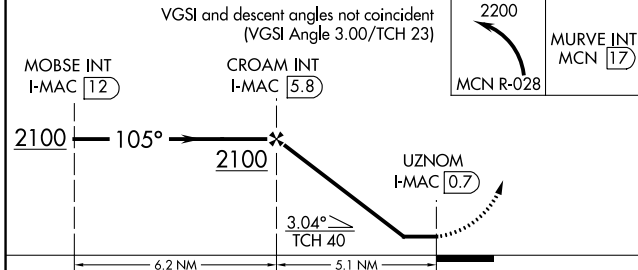
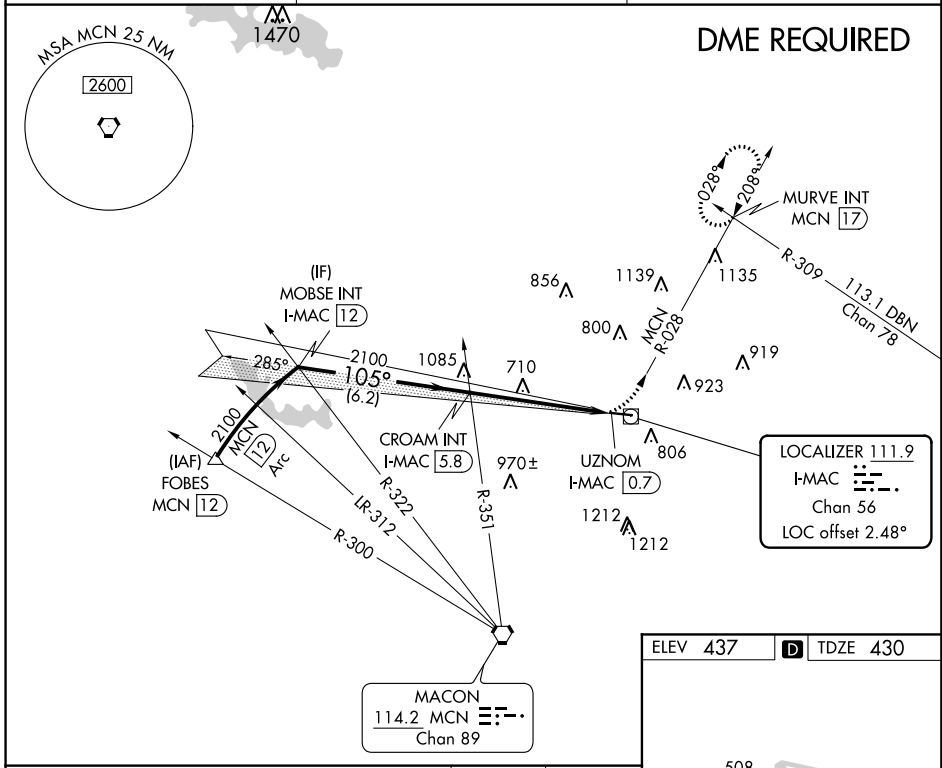
LOC RWY 10

MACON DOWNTOWN (MAC)

NA Use Middle Georgia Rgnl altimeter setting; when not received, use Robins AFB altimeter setting and increase all MDA 20 feet.

MISSED APPROACH: Climbing left turn to 2200 on MCN VORTAC R-028 to MURVE INT/MCN 17 DME and hold.

MCN ASOS 120.775	ATLANTA APP CON ★ 124.2 279.6	UNICOM 123.0 (CTAF) 0
----------------------------	---	---------------------------------



ELEV 437	TDZE 430
----------	----------

508

4694 X 100

105° 5.1 NM from FAF

MIRL Rwy 10-28

FAF to MAP 5.1 NM

Knots	60	90	120	150	180
Min:Sec	5:06	3:24	2:33	2:02	1:42

CATEGORY	A	B	C	D
S-10	1060-1 630 (700-1)		1060-1¾ 630 (700-1¾)	
C CIRCLING	1200-1 763 (800-1)		1320-2¾ 883 (900-2¾)	1480-3 1043 (1100-3)

SE-4, 21 MAY 2020 to 18 JUN 2020

SE-4, 21 MAY 2020 to 18 JUN 2020

WAAS CH 56421 W10A	APP CRS 102°	Rwy Idg 4184 TDZE 430 Apt Elev 437
--	------------------------	---

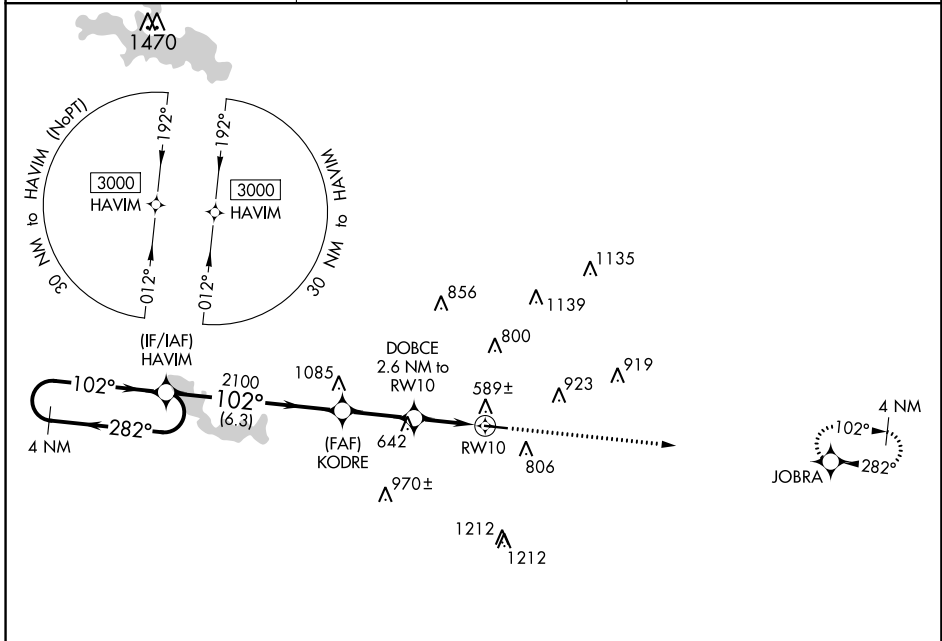
RNAV (GPS) RWY 10

MACON DOWNTOWN (MAC)

Baro-VNAV NA. DME/DME RNP-0.3 NA. Use Middle Georgia altimeter setting, when not received, use Robbins AFB altimeter setting and increase LPV DA to 726 feet, increase LNAV/VNAV DA to 833 feet and increase all MDA 20 feet.

MISSED APPROACH:
Climb to 3000 direct JOBRA and hold.

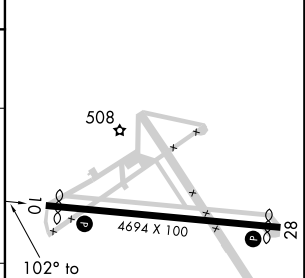
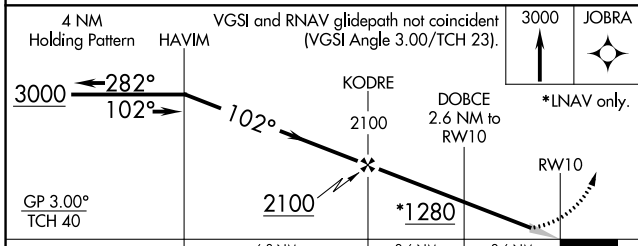
MCN ASOS 120.775	ATLANTA APP CON * 124.2 279.6	UNICOM 123.0 (CTAF) 0
----------------------------	---	---------------------------------



SE-4, 21 MAY 2020 to 18 JUN 2020

SE-4, 21 MAY 2020 to 18 JUN 2020

ELEV 437	D	TDZE 430
----------	----------	----------



CATEGORY	A	B	C	D
LPV DA		712-1	282 (300-1)	
LNAV/VNAV DA		819-1 $\frac{3}{8}$	389 (400-1 $\frac{3}{8}$)	
LNAV MDA	880-1	450 (500-1)	880-1 $\frac{3}{8}$	450 (500-1 $\frac{3}{8}$)
C CIRCLING	1200-1	763 (800-1)	1320-2 $\frac{3}{4}$ 883 (900-2 $\frac{3}{4}$)	1480-3 1043 (1100-3)

MIRL Rwy 10-28 **0**

WAAS CH 86421 W28A	APP CRS 282°	Rwy Idg 4184 TDZE 430 Apt Elev 437
--	------------------------	---

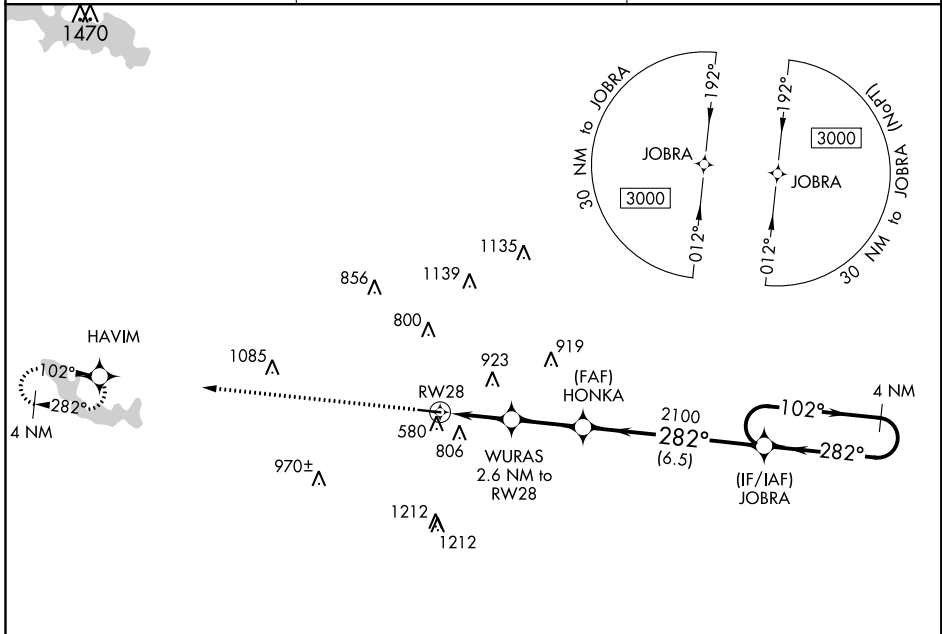
RNAV (GPS) RWY 28

MACON DOWNTOWN (MAC)

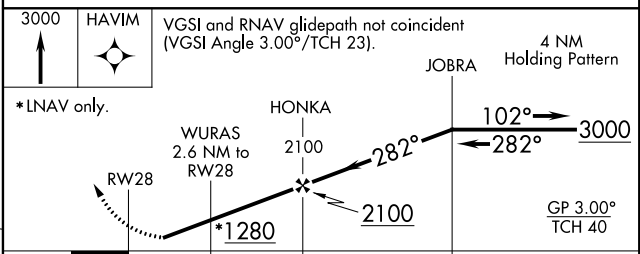
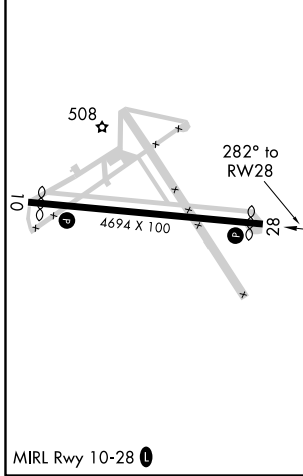
Baro-VNAV NA. Rwy 28 helicopter visibility reduction below $\frac{3}{4}$ SM NA. DME/DME RNP-0.3 NA. Use Middle Georgia altimeter setting, when not received, use Robbins AFB altimeter setting and increase LPV DA to 726 feet, increase LNAV/VNAV DA to 1063 feet and increase all MDA 20 feet.

MISSED APPROACH: Climb to 3000 direct HAVIM and hold.

MCN ASOS 120.775	ATLANTA APP CON * 124.2 279.6	UNICOM 123.0 (CTAF) 0
----------------------------	---	---------------------------------



ELEV 437	D	TDZE 430
-----------------	----------	-----------------



CATEGORY	A	B	C	D
LPV DA		712-1	282 (300-1)	
LNAV/VNAV DA		1049-2½	619 (700-2½)	
LNAV MDA	920-1	490 (500-1)	920-1⅓	490 (500-1⅓)
C CIRCLING	1200-1	763 (800-1)	1320-2¾ 883 (900-2¾)	1480-3 1043 (1100-3)

SE-4, 21 MAY 2020 to 18 JUN 2020

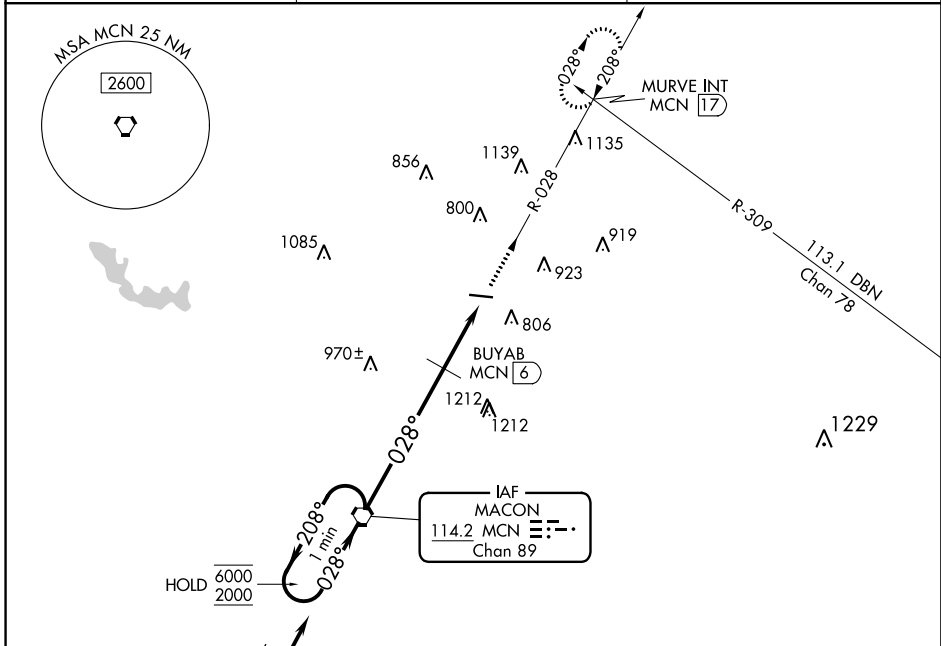
SE-4, 21 MAY 2020 to 18 JUN 2020

VORTAC MCN 114.2 Chan 89	APP CRS 028°	Rwy Idg TDZE Apt Elev N/A N/A 437
--	------------------------	---

VOR-A
MACON DOWNTOWN (MAC)

<p>▼ ▲ NA</p>	<p>MISSED APPROACH: Climb to 2200 via MCN VORTAC R-028 to MURVE INT/MCN 17 DME and hold.</p>
-------------------	--

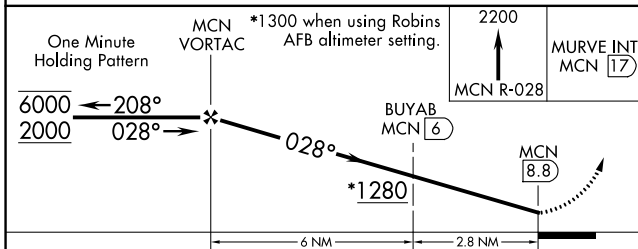
<p>MCN ASOS 120.775</p>	<p>ATLANTA APP CON ★ 124.2 279.6</p>	<p>UNICOM 123.0 (CTAF) 1</p>
------------------------------------	---	---



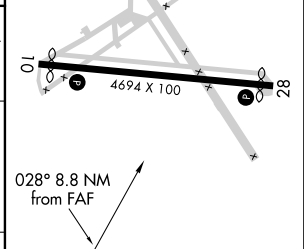
SE-4, 21 MAY 2020 to 18 JUN 2020

SE-4, 21 MAY 2020 to 18 JUN 2020

(IF/IAF) METER MCN 10.1	HOLD 6000 / 2000	2000 NoPT (10,1)	208°	028°	IAF MACON 114.2 MCN Chan 89
--------------------------------	------------------	------------------	------	------	-----------------------------



ELEV 437 D
MIRL Rwy 10-28 1



CATEGORY	A	B	C	D
C CIRCLING	1280-1¼	843 (900-1¼)	1320-2¾ 883 (900-2¾)	1480-3 1043 (1100-3)
BUYAB FIX MINIMUMS				
C CIRCLING	1200-1 763 (800-1)	1200-1¼ 763 (800-1¼)	1320-2¾ 883 (900-2¾)	1480-3 1043 (1100-3)

FAF to MAP 8.8 NM					
Knots	60	90	120	150	180
Min:Sec	8:48	5:52	4:24	3:31	2:56