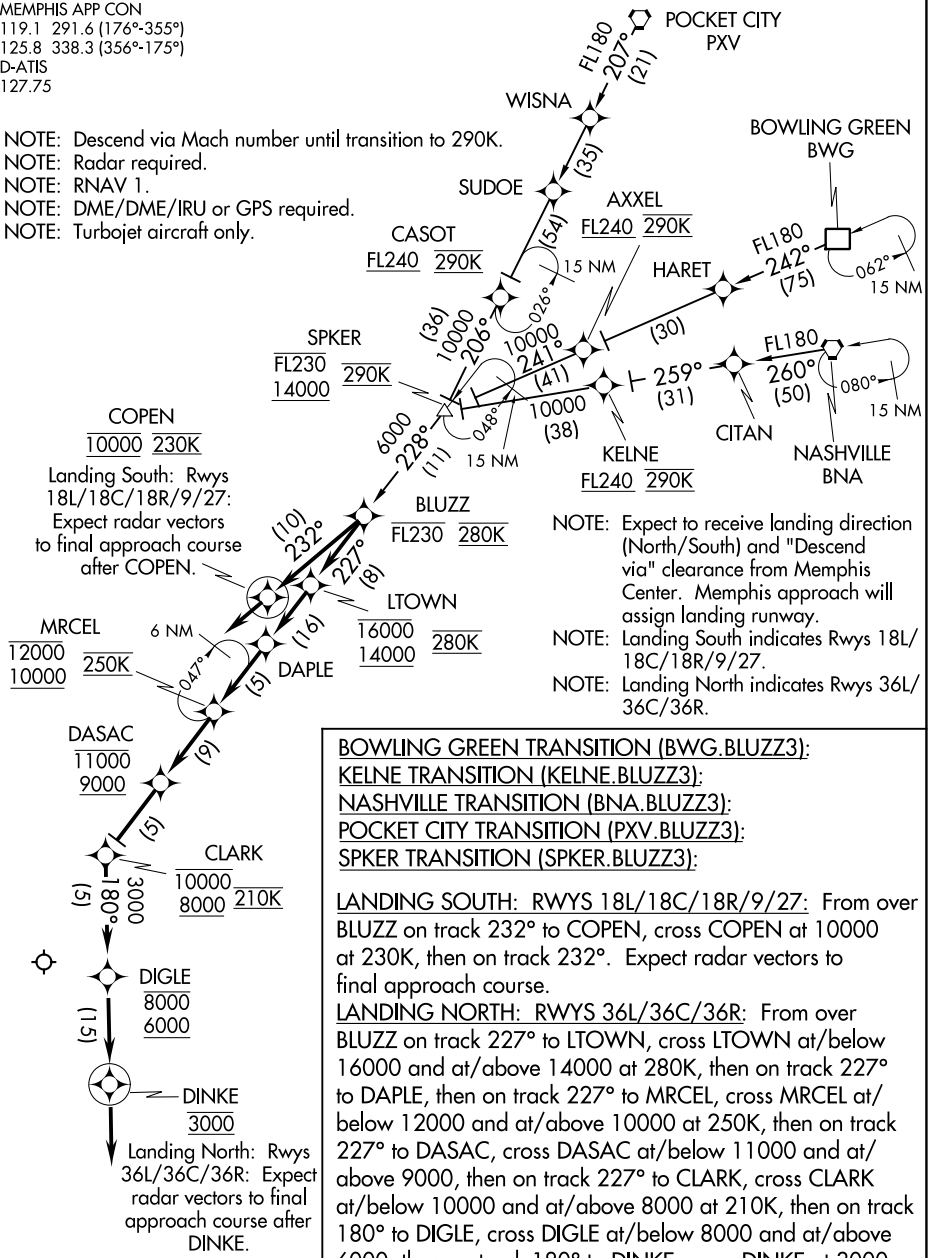


# BLUZZ THREE ARRIVAL (RNAV)

MEMPHIS APP CON  
119.1 291.6 (176°-355°)  
125.8 338.3 (356°-175°)  
D-ATIS  
127.75

NOTE: Descend via Mach number until transition to 290K.  
NOTE: Radar required.  
NOTE: RNAV 1.  
NOTE: DME/DME/IRU or GPS required.  
NOTE: Turbojet aircraft only.



NOTE: Expect to receive landing direction (North/South) and "Descend via" clearance from Memphis Center. Memphis approach will assign landing runway.  
NOTE: Landing South indicates Rwy's 18L/18C/18R/9/27.  
NOTE: Landing North indicates Rwy's 36L/36C/36R.

**BOWLING GREEN TRANSITION (BWG.BLUZZ3):**  
**KELNE TRANSITION (KELNE.BLUZZ3):**  
**NASHVILLE TRANSITION (BNA.BLUZZ3):**  
**POCKET CITY TRANSITION (PXV.BLUZZ3):**  
**SPKER TRANSITION (SPKER.BLUZZ3):**

**LANDING SOUTH: RWYS 18L/18C/18R/9/27:** From over BLUZZ on track 232° to COPEN, cross COPEN at 10000 at 230K, then on track 232°. Expect radar vectors to final approach course.  
**LANDING NORTH: RWYS 36L/36C/36R:** From over BLUZZ on track 227° to LTOWN, cross LTOWN at/below 16000 and at/above 14000 at 280K, then on track 227° to DAPLE, then on track 227° to MRCCL, cross MRCCL at/below 12000 and at/above 10000 at 250K, then on track 227° to DASAC, cross DASAC at/below 11000 and at/above 9000, then on track 227° to CLARK, cross CLARK at/below 10000 and at/above 8000 at 210K, then on track 180° to DIGLE, cross DIGLE at/below 8000 and at/above 6000, then on track 180° to DINKE, cross DINKE at 3000, then on track 180°. Expect radar vectors to final approach course.

NOTE: Chart not to scale.

SE-1, 22 FEB 2024 to 21 MAR 2024

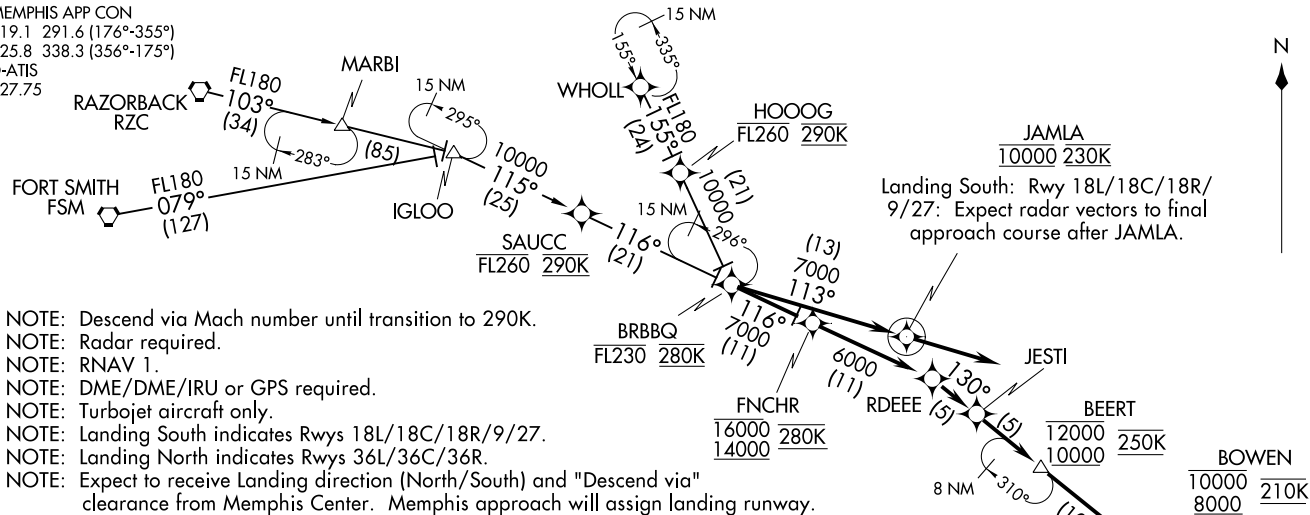
SE-1, 22 FEB 2024 to 21 MAR 2024

# BLUZZ THREE ARRIVAL (RNAV)

BRBBO THREE ARRIVAL (RNAV)  
 (BRBBO, BRBBO3) 01FEB18

MEMPHIS APP CON

119.1 291.6 (176°-355°)  
 125.8 338.3 (356°-175°)  
 D-ATIS  
 127.75



- NOTE: Descend via Mach number until transition to 290K.
- NOTE: Radar required.
- NOTE: RNAV 1.
- NOTE: DME/DME/IRU or GPS required.
- NOTE: Turbojet aircraft only.
- NOTE: Landing South indicates Rwsy 18L/18C/18R/9/27.
- NOTE: Landing North indicates Rwsy 36L/36C/36R.
- NOTE: Expect to receive Landing direction (North/South) and "Descend via" clearance from Memphis Center. Memphis approach will assign landing runway.

FORT SMITH TRANSITION (FSM.BRBBO3):  
IGLOO TRANSITION (IGLOO.BRBBO3):  
RAZORBACK TRANSITION (RZC.BRBBO3):  
WHOLL TRANSITION (WHOLL.BRBBO3):

LANDING SOUTH: RWYS 18L/18C/18R/9/27: From BRBBO on track 113° to cross JAMLA at 10000 and at 230K, then on track 113°. Expect radar vectors to final approach course.

LANDING NORTH: RWYS 36L/36C/36R: From BRBBO on track 116° to cross FNCHR between 14000 and 16000 and at 280K, then on track 116° to RDEEE, then on track 130° to JESTI, then on track 130° to cross BEERT between 10000 and 12000 and at 250K, then on track 130° to cross LOONR between 9000 and 11000 then on track 130° to cross BOWEN between 8000 and 10000 and at 210K then on track 182° to cross JIMGA between 6000 and 8000 then on track 179° to cross JAYWA at 4000, then on track 179°. Expect radar vectors to final approach course.

NOTE: Chart not to scale.

(BRBBO, BRBBO3) 18032  
 BRBBO THREE ARRIVAL (RNAV)

AL-253 (FAA)

MEMPHIS INTL (MEM)  
 MEMPHIS, TENNESSEE

MEMPHIS, TENNESSEE  
 MEMPHIS INTL (MEM)

CONDOR THREE ARRIVAL (RNAV)  
 (CONDOR.CONDR3) 01FEB18

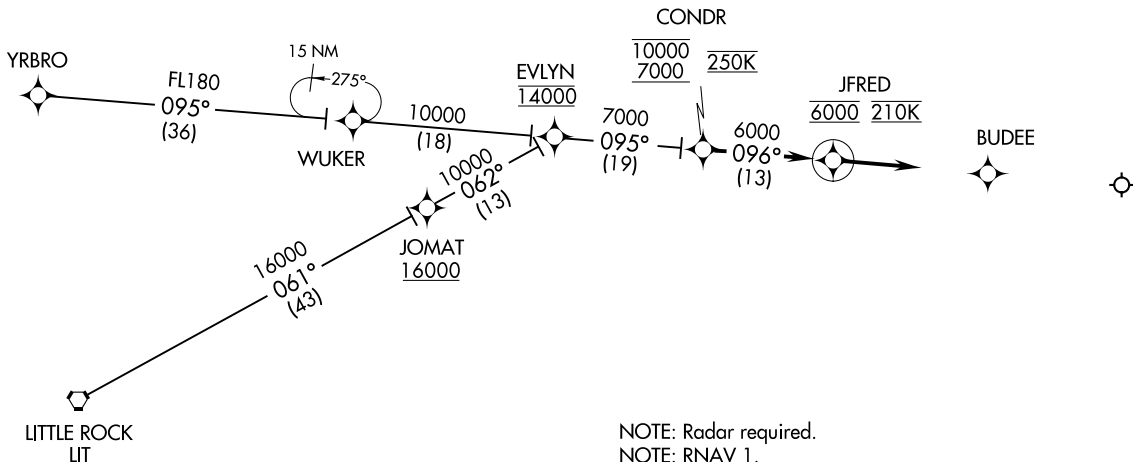
MEMPHIS APP CON  
 119.1 291.6 (176°-355°)  
 125.8 338.3 (356°-175°)  
 D-ATIS  
 127.75

MEMPHIS, TENNESSEE  
 MEMPHIS INTL (MEM)

ARRIVAL ROUTE DESCRIPTION

EVLYN TRANSITION (EVLYN.CONDR3):  
LITTLE ROCK TRANSITION (LIT.CONDR3):  
YRBRO TRANSITION (YRBRO.CONDR3):

From over CONDR on track 096° to JFRED, cross JFRED at 6000 at 210K, then on track 096°. Expect radar vectors to final approach course.



NOTE: Radar required.  
 NOTE: RNAV 1.  
 NOTE: DME/DME/IRU or GPS required.  
 NOTE: Turbojet aircraft only.  
 NOTE: Assigned by ATC only.

NOTE: Chart not to scale.

(CONDOR.CONDR3) 1803Z  
 CONDOR THREE ARRIVAL (RNAV)

AL-253 (FAA)

MEMPHIS INTL (MEM)  
 MEMPHIS, TENNESSEE



ARRIVAL ROUTE DESCRIPTION

RAZORBACK TRANSITION (RZC.DAWGG2): From over RZC VORTAC on RZC R-098 to IGLOO, then on GQE R-291 to DAWGG, thence. . . .

WALNUT RIDGE TRANSITION (ARG.DAWGG2): From over ARG VORTAC on R-164 to DAWGG, thence. . . .

LANDING NORTH: From over DAWGG/GQE 17 DME on GQE R-291 to cross FNCHR/GQE 11 DME at or above 14000 and at or below 16000, then on GQE R-291 to GQE VORTAC, then on GQE R-124 and MEM R-308 to JESTI/MEM 27 DME, then on MEM R-308 to cross BEERT/MEM 22 DME at or above 10000 and at or below 12000 and at 250K, then on MEM R-308 to cross LOONR/MEM 12 DME at or above 9000 and at or below 11000, then on MEM R-308 to cross BOWEN/MEM 8 DME at or above 8000 and at 210K, then on heading 180°, expect radar vectors to final approach course.

LANDING SOUTH: From over DAWGG/GQE 17 DME on GQE R-291 to cross FNCHR/GQE 11 DME at 10000 and 230K, then on heading 112°, expect radar vectors to final approach course.

SE-1, 22 FEB 2024 to 21 MAR 2024

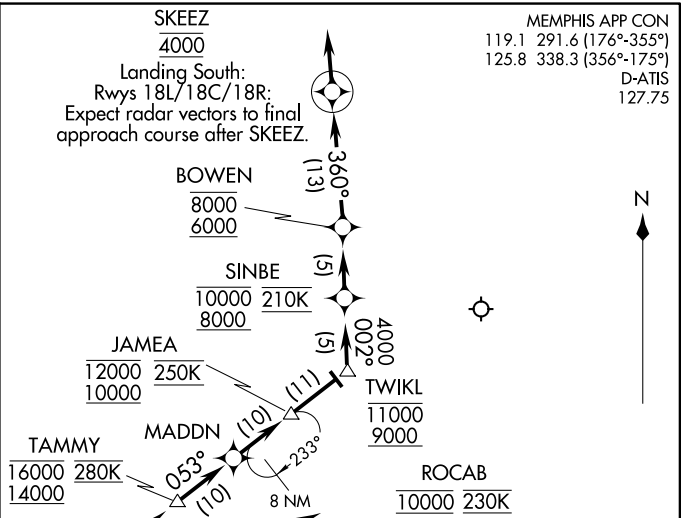
SE-1, 22 FEB 2024 to 21 MAR 2024

**HOBK THREE ARRIVAL (RNAV)**  
 (HOBK.HOBRK3) 01 FEB 18

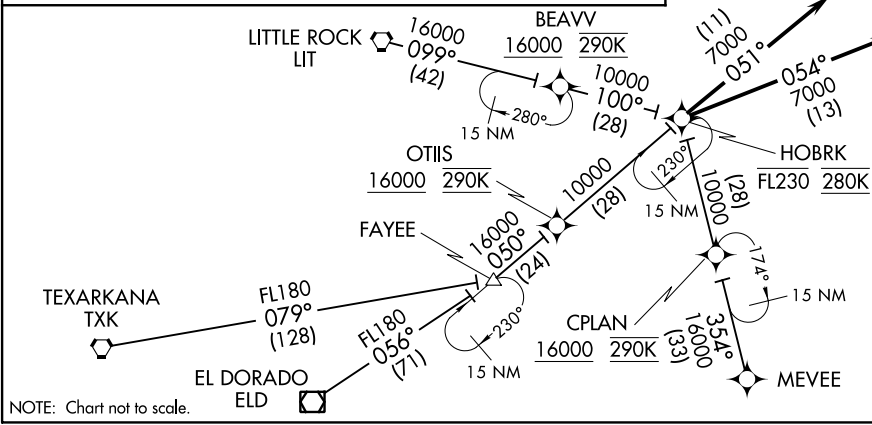
**EL DORADO TRANSITION (ELD.HOBRK3):**  
**FAYEE TRANSITION (FAYEE.HOBRK3):**  
**LITTLE ROCK TRANSITION (LIT.HOBRK3):**  
**MEVEE TRANSITION (MEVEE.HOBRK3):**  
**TEXARKANA TRANSITION (TXK.HOBRK3):**

**LANDING NORTH: RWYS 36L/36C/36R/9/27:** From over HOBK on track 054° to ROCAF, cross ROCAF at 10000 at 230K, then on track 054°. Expect radar vectors to final approach course.

**LANDING SOUTH: RWYS 18L/18C/18R:** From over HOBK on track 051° to TAMMY, cross TAMMY at/below 16000 and at/above 14000 at 280K, then on track 053° to MADDN, then on track 053° to JAMEA, cross JAMEA at/below 12000 and at/above 10000 at 250K, then on track 053° to TWIKL, cross TWIKL at/below 11000 and at/above 9000, then on track 002° to SINBE, cross SINBE at/below 10000 and at/above 8000 at 210K, then on track 002° to BOWEN, cross BOWEN at/below 8000 and at/above 6000, then on track 360° to SKEEZ, cross SKEEZ at 4000, then on track 360°. Expect radar vectors to final approach course.



MEMPHIS APP CON  
 119.1 291.6 (176°-355°)  
 125.8 338.3 (356°-175°)  
 D-ATIS  
 127.75



NOTE: Chart not to scale.

- NOTE: Descend via Mach number until transition to 290K.
- NOTE: Radar required.
- NOTE: RNAV 1.
- NOTE: DME/DME/IRU or GPS required.
- NOTE: Turbojet aircraft only.
- NOTE: Landing South indicates Rwy's 18L/18C/18R.
- NOTE: Landing North indicates Rwy's 36L/36C/36R/9/27.
- NOTE: Expect to receive landing direction (North/South) and "Descend via" clearance from Memphis Center. Memphis Approach will assign landing Runway.

**HOBK THREE ARRIVAL (RNAV)**  
 (HOBK.HOBRK3) 18032  
 AL-233 (FAA)

MEMPHIS INTL (MEM)  
 MEMPHIS, TENNESSEE

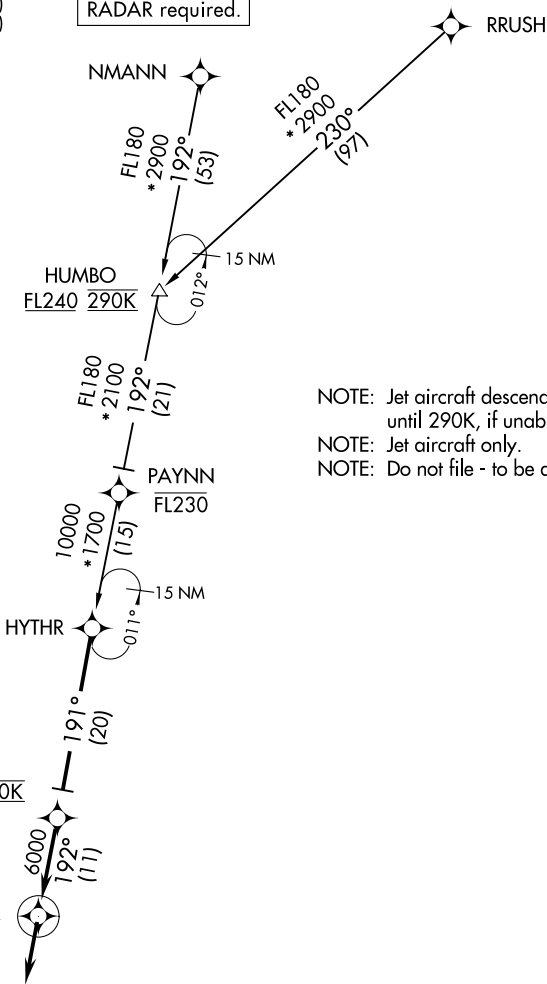
MEMPHIS, TENNESSEE  
 MEMPHIS INTL (MEM)

# HYTHR THREE ARRIVAL (RNAV)

MEMPHIS APP CON  
119.1 291.6 (176°-355°)  
125.8 338.3 (356°-175°)  
D-ATIS  
127.75

RNAV 1 - DME/DME/IRU or GPS.

RADAR required.



NOTE: Jet aircraft descend via Mach number until 290K, if unable, advise ATC.  
 NOTE: Jet aircraft only.  
 NOTE: Do not file - to be assigned by ATC.

NOTE: Chart not to scale.

### ARRIVAL ROUTE DESCRIPTION

HUMBO TRANSITION (HUMBO.HYTHR3):  
NMANN TRANSITION (NMANN.HYTHR3):  
RRUSH TRANSITION (RRUSH.HYTHR3):

From HYTHR on track 191° to cross ROBYE at 10000 and at 250K, then on track 192° to ASSUR. Then on track 192°. Expect radar vectors to final approach course.

SE-1, 22 FEB 2024 to 21 MAR 2024

SE-1, 22 FEB 2024 to 21 MAR 2024

(NARRATIVE ON FOLLOWING PAGE)

MEMPHIS APP CON  
119.1 291.6 (176°-355°)  
125.8 338.3 (356°-175°)  
D-ATIS 127.75

- NOTE: DME and RADAR required.
- NOTE: Procedure not available for RNAV capable Turbojets.
- NOTE: RNAV capable Turbojets must file the HOBKR RNAV STAR.
- NOTE: Maintain last assigned altitude until cleared to "descend via the MARVELL SIX," then comply with altitude restrictions as published.

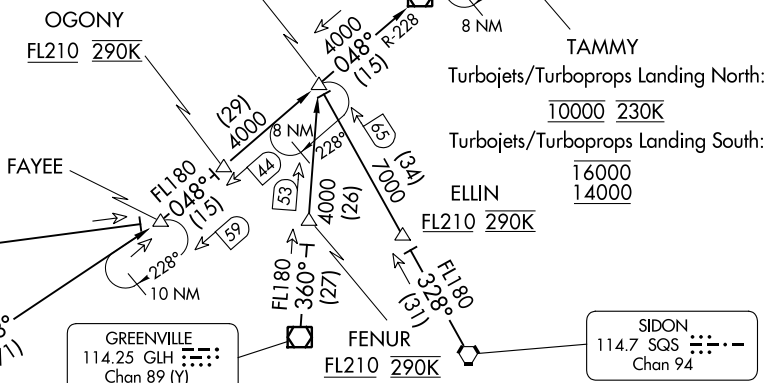
TEXARKANA  
116.3 TXK  
Chan 110

EL DORADO  
115.5 ELD  
Chan 102

GREENVILLE  
114.25 GLH  
Chan 89 (Y)

MARVELL  
113.65 UJM  
Chan 83(Y)

MEMPHIS  
117.5 MEM  
Chan 122  
3000



NOTE: Chart not to scale.

MARVELL SIX ARRIVAL  
(UJM, UJM6) 10NOV16

MEMPHIS, TENNESSEE  
MEMPHIS INTL (MEM)

(UJM, UJM6) 23334  
MARVELL SIX ARRIVAL

AL-253 (FAA)

MEMPHIS INTL (MEM)  
MEMPHIS, TENNESSEE



ARRIVAL ROUTE DESCRIPTION

EL DORADO TRANSITION (ELD.UJM6): From over ELD VOR/DME on ELD R-048 to FAYEE, then on UJM R-228 to UJM VOR/DME. Thence. . . .

GREENVILLE TRANSITION (GLH.UJM6): From over GLH VOR/DME on GLH R-360 to BARFF, then on UJM R-228 to UJM VOR/DME. Thence. . . .

SIDON TRANSITION (SQS.UJM6): From over SQS VORTAC on SQS R-328 to BARFF, then on UJM R-228 to UJM VOR/DME. Thence. . . .

TEXARKANA TRANSITION (TXK.UJM6): From over TXK VORTAC on TXK R-071 to FAYEE, then on UJM R-228 to UJM VOR/DME. Thence. . . .

TURBOJETS/TURBOPROPS LANDING SOUTH: From over UJM VOR/DME on MEM VORTAC R-232 to cross TAMMY/MEM 39 DME at or above 14000 and at or below 16000, then on MEM VORTAC R-232 to MADDN/MEM 29 DME, then on MEM VORTAC R-232 to JAMEA/MEM 19 DME at or above 10000 and at or below 12000 at 250K, then on MEM VORTAC R-232 to cross TWIKL/ MEM 8 DME at or above 8000 and at or below 11000 and at 210K, then on heading 355°, expect radar vectors to final approach course.

TURBOJETS/TURBOPROPS LANDING NORTH: From over UJM VOR/DME on MEM VORTAC R-232 to cross TAMMY/MEM 39 DME at 10000 and at 230K, then on heading 055, expect radar vectors to final approach course.

NON-TURBINE AIRCRAFT ALL RUNWAYS: From over UJM VOR/DME on MEM VORTAC R-232 to cross MEM VORTAC at or above 3000, expect radar vectors to final approach course after passing TAMMY/MEM 39 DME.

SE-1, 22 FEB 2024 to 21 MAR 2024

SE-1, 22 FEB 2024 to 21 MAR 2024

MONAA FOUR ARRIVAL (RNAV)  
(MONAA.MONAA4) 30NOV23

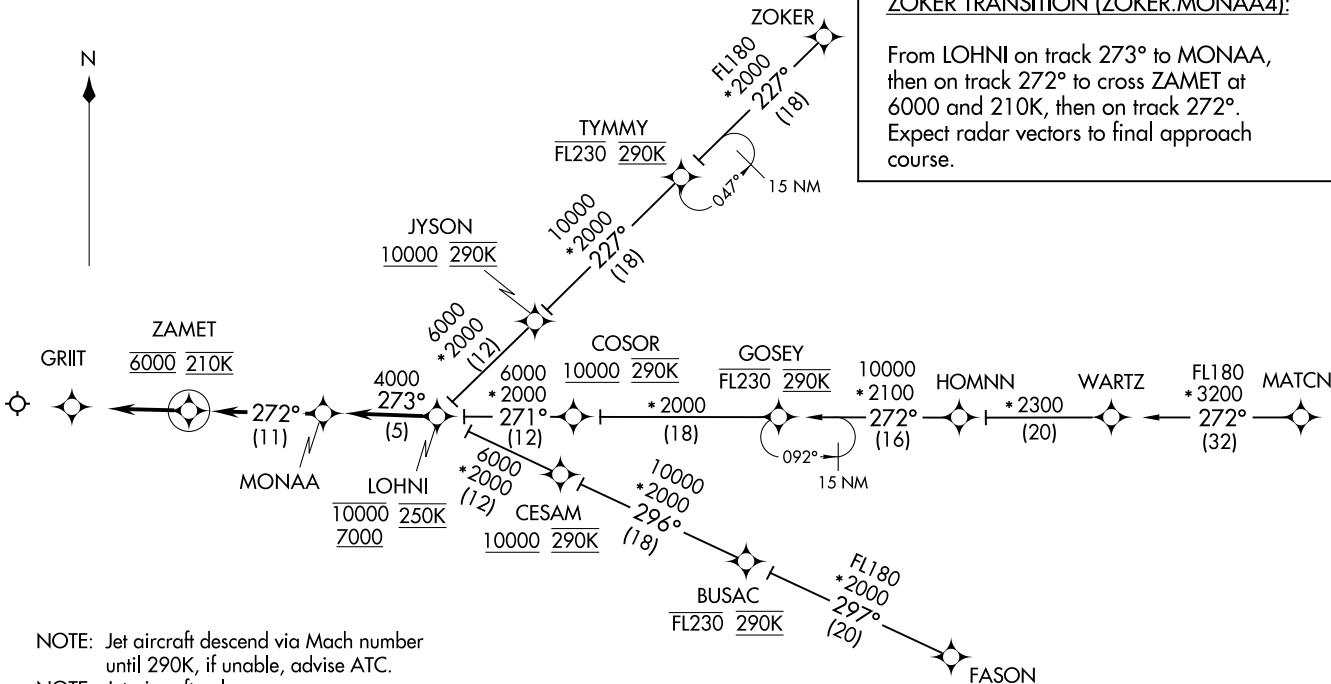
MEMPHIS APP CON  
119.1 291.6 (176°-355°)  
125.8 338.3 (356°-175°)  
D-ATIS  
127.75

RNAV 1 - DME/DME/IRU or GPS.  
RADAR required.

ARRIVAL ROUTE DESCRIPTION

FASON TRANSITION (FASON.MONAA4):  
HOMNN TRANSITION (HOMNN.MONAA4):  
MATCHN TRANSITION (MATCHN.MONAA4):  
ZOKER TRANSITION (ZOKER.MONAA4):

From LOHNI on track 273° to MONAA,  
then on track 272° to cross ZAMET at  
6000 and 210K, then on track 272°.  
Expect radar vectors to final approach  
course.



- NOTE: Jet aircraft descend via Mach number until 290K, if unable, advise ATC.
- NOTE: Jet aircraft only.
- NOTE: Do not file - to be assigned by ATC.

NOTE: Chart not to scale.

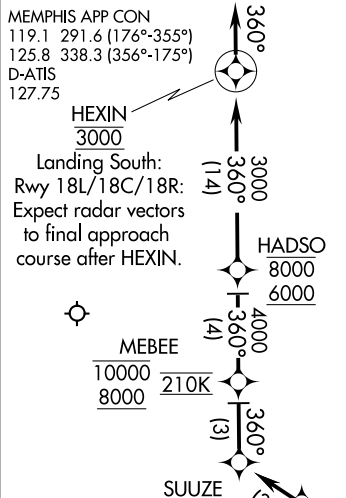
(MONAA.MONAA4) 23334  
MONAA FOUR ARRIVAL (RNAV)

AI-253 (FAA)

MEMPHIS INTL (MEM)  
MEMPHIS, TENNESSEE

MEMPHIS, TENNESSEE  
MEMPHIS INTL (MEM)

VANZE THREE ARRIVAL (RNAV)  
VANZE.VANZE3 14JUL22



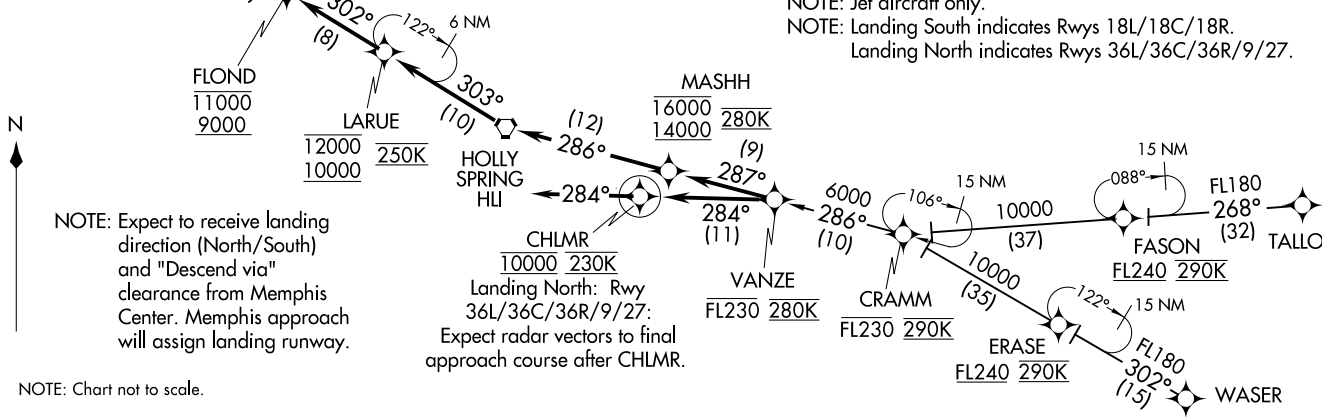
CRAMM TRANSITION (CRAMM.VANZE3):  
TALLO TRANSITION (TALLO.VANZE3):  
WASER TRANSITION (WASER.VANZE3):

**LANDING SOUTH: RUNWAY 18L/18C/18R:** From over VANZE on track 287° to MASHH, cross MASHH at/below 16000 and at/above 14000 at 280K, then on track 286° to HLI VORTAC, then on track 303° to LARUE, cross LARUE at/below 12000 and at/above 10000 at 250K, then on track 302° to FLOND, cross FLOND at/below 11000 and at/above 9000, then on track 302° to SUUZE, then on track 360° to MEBEE, cross MEBEE at/below 10000 and at/above 8000 at 210K, then on track 360° to HADSO, cross HADSO at/below 8000 and at/above 6000, then on track 360° to HEXIN, cross HEXIN at 3000, then on track 360°.  
 Expect radar vectors to final approach course.

**LANDING NORTH: RUNWAY 36L/36C/36R/9/27:** From over VANZE on track 284° to CHLMR, cross CHLMR at 10000 at 230K, then on track 284°.  
 Expect radar vectors to final approach course.

RNAV 1 - DME/DME/IRU or GPS required.  
 RADAR required.

NOTE: Descend via Mach number until transition to 290K.  
 NOTE: Jet aircraft only.  
 NOTE: Landing South indicates Rwys 18L/18C/18R.  
 Landing North indicates Rwys 36L/36C/36R/9/27.



NOTE: Expect to receive landing direction (North/South) and "Descend via" clearance from Memphis Center. Memphis approach will assign landing runway.

NOTE: Chart not to scale.

Landing North: Rwy 36L/36C/36R/9/27:  
 Expect radar vectors to final approach course after CHLMR.

(VANZE.VANZE3) 22195  
VANZE THREE ARRIVAL (RNAV)

AL-253 (FAA)

MEMPHIS, TENNESSEE  
MEMPHIS INTL (MEMD)

MEMPHIS INTL (MEMD)  
MEMPHIS, TENNESSEE

(WLDER.WLDER1) 23334  
**WLDER ONE ARRIVAL**

AL-253 (FAA)

MEMPHIS INTL (MEM)  
 MEMPHIS, TENNESSEE

MEMPHIS APP CON  
 119.1 291.6 (176°-355°)  
 125.8 338.3 (356°-175°)  
 D-ATIS  
 127.75

POCKET CITY  
 113.3 PXV  
 Chan 80

NASHVILLE  
 114.1 BNA  
 Chan 88

MC KELLAR  
 114.85 MKL  
 Chan 95(Y)

DASAC  
 11000  
 9000

CASOT  
 FL240 290K

SPKER  
 FL230 280K

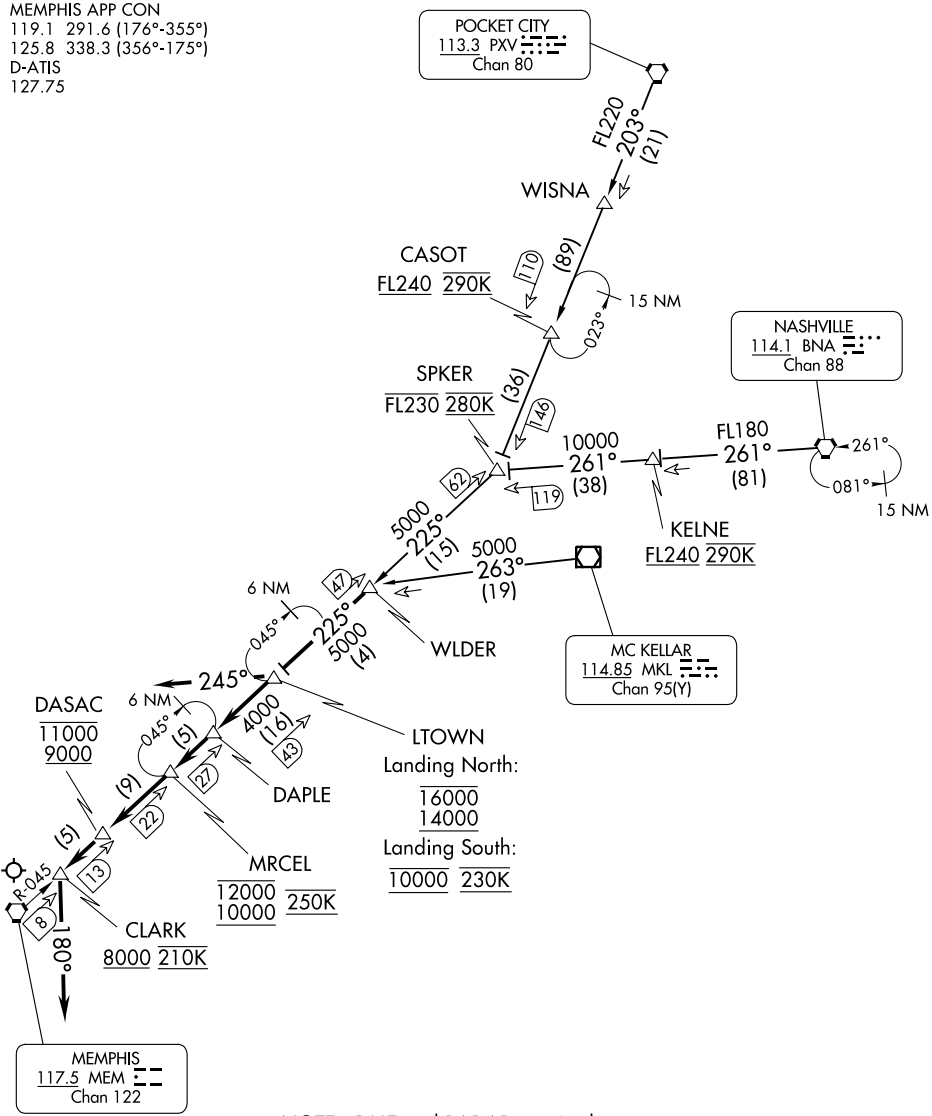
KELNE  
 FL180 261°  
 FL240 290K

LTOWN  
 Landing North:  
 16000  
 14000  
 Landing South:  
 10000 230K

MRCEL  
 12000 250K  
 10000

CLARK  
 8000 210K

MEMPHIS  
 117.5 MEM  
 Chan 122



- NOTE: DME and RADAR required.
- NOTE: Procedure NA for RNAV capable jets.
- NOTE: RNAV capable jets must file the BLUZZ RNAV STAR.
- NOTE: Maintain last assigned altitude until cleared to "Descend via the WLDER ONE", then comply with altitude restrictions as published.

(NARRATIVE ON FOLLOWING PAGE)

NOTE: Chart not to scale.

**WLDER ONE ARRIVAL**  
 (WLDER.WLDER1) 24MAR22

MEMPHIS, TENNESSEE  
 MEMPHIS INTL (MEM)

SE-1, 22 FEB 2024 to 21 MAR 2024

SE-1, 22 FEB 2024 to 21 MAR 2024

ARRIVAL ROUTE DESCRIPTION

NASHVILLE TRANSITION (BNA.WLDER1): From over BNA VORTAC on BNA R-261 to SPKER, then on MEM R-045 to WLDER, thence. . . .

MC KELLAR TRANSITION (MKL.WLDER1): From over MKL VOR/DME on MKL R-263 to WLDER, thence. . . .

POCKET CITY TRANSITION (PXV.WLDER1): From over PXV VORTAC on PXV R-203 to SPKER, then on MEM R-045 to WLDER, thence. . . .

LANDING NORTH: From over WLDER/MEM VORTAC 47 DME on MEM R-045 to cross LTOWN/MEM 43 DME at or above 14000 and at or below 16000, then on MEM R-045 to cross DAPLE/MEM 27 DME, then on MEM R-045 to MRCEL/MEM 22 DME at or above 10000 and at or below 12000 and at 250K, then on MEM R-045 to cross DASAC/MEM 13 DME at or above 9000 and at or below 11000, then on on MEM R-045 to cross CLARK/MEM 8 DME at or above 8000 and at 210K, then on heading 180°, expect RADAR vectors to final approach course.

LANDING SOUTH: From over WLDER/MEM VORTAC 47 DME on MEM R-045 to cross LTOWN/MEM 43 DME at 10000 and 230K, then on heading 245°, expect RADAR vectors to final approach course.

SE-1, 22 FEB 2024 to 21 MAR 2024

SE-1, 22 FEB 2024 to 21 MAR 2024