

WAAS CH 99501 W16A	APP CRS 159°	Rwy Idg TDZE Apt Elev	5002 1278 1278
--	------------------------	-----------------------------	---

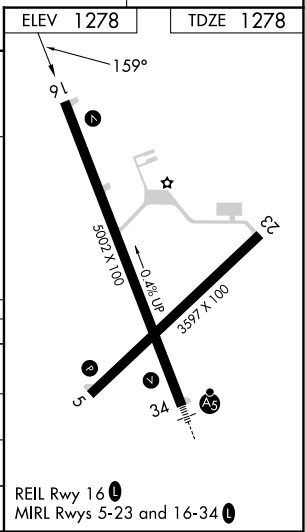
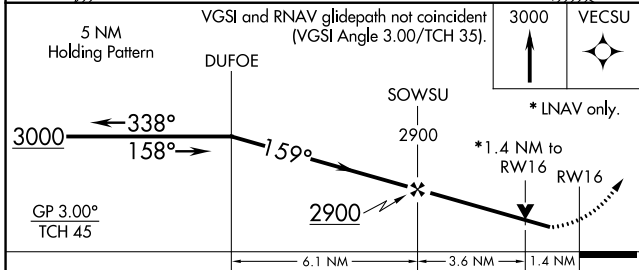
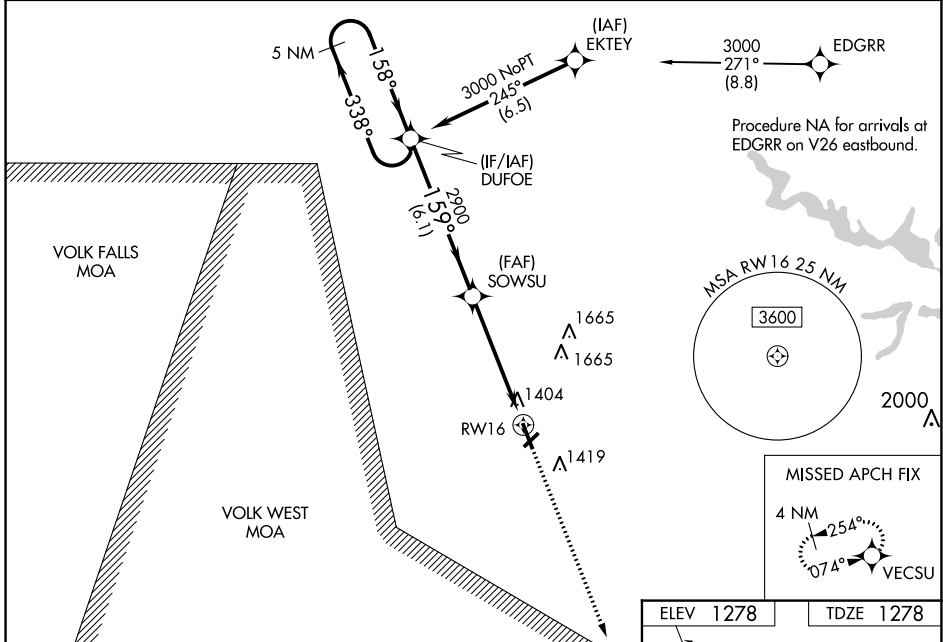
RNAV (GPS) RWY 16

MARSHFIELD MUNI (MFI)

⚠ For uncompensated Baro-VNAV systems, LNAV/VNAV NA below -21°C (-5°F) or above 54°C (130°F). Baro-VNAV and VDP NA when using Central Wisconsin altimeter setting. DME/DME RNP-0.3 NA. Rwy 16 helicopter visibility reduction below 3/4 SM NA. When local altimeter setting not received, use Central Wisconsin altimeter setting and increase all DA 56 feet and all visibility 1/8 SM, increase all MDA 60 feet and LNAV Cat C/D visibility 1/4 SM.

MISSED APPROACH:
Climb to 3000 direct VECSU and hold.

ASOS 121.575	MINNEAPOLIS CENTER 124.4 317.7	UNICOM 123.0 (CTAF)
------------------------	--	-------------------------------



CATEGORY	A	B	C	D
LPV DA		1639-1¼	361 (400-1¼)	
LNAV/VNAV DA		1682-1¾	404 (500-1¾)	
LNAV MDA	1760-1	482 (500-1)	1760-1¾	482 (500-1¾)
C CIRCLING	1760-1	482 (500-1)	2020-2¼ 742 (800-2¼)	2020-2½ 742 (800-2½)

EC-3, 22 FEB 2024 to 21 MAR 2024

EC-3, 22 FEB 2024 to 21 MAR 2024

WAAS CH 70732 W23A	APP CRS 227°	Rwy ldg TDZE 1258 Apt Elev 1278
--	------------------------	---

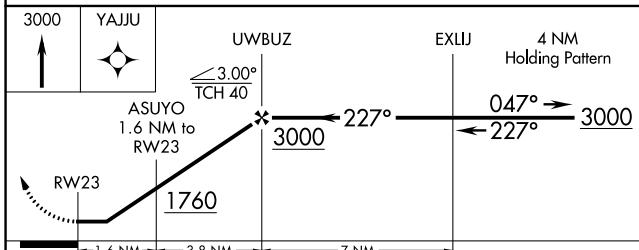
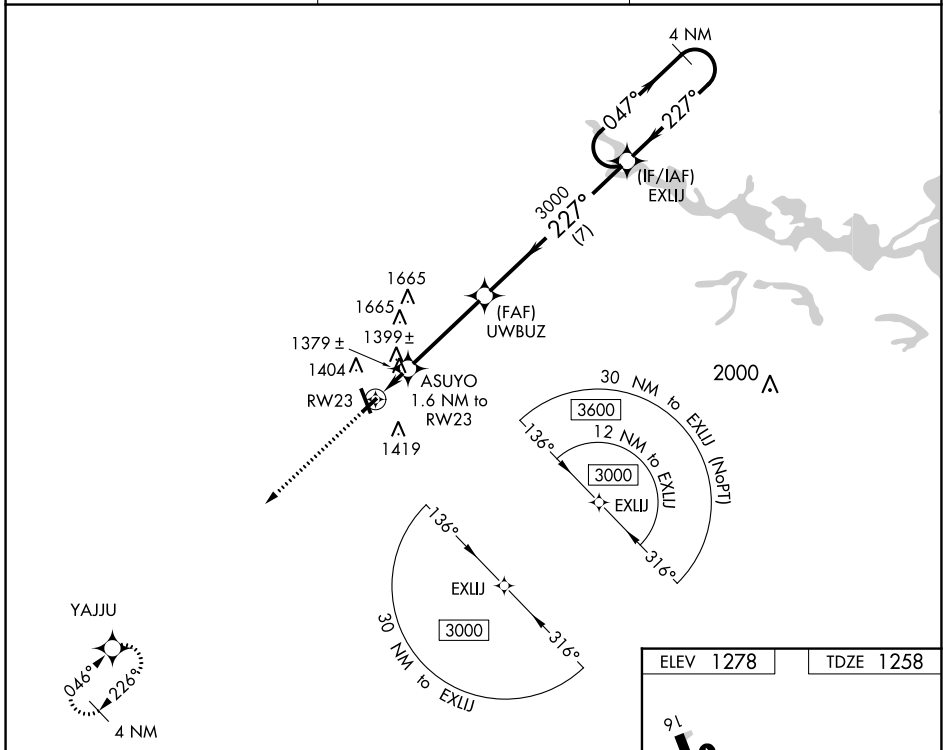
RNAV (GPS) RWY 23

MARSHFIELD MUNI (MFI)

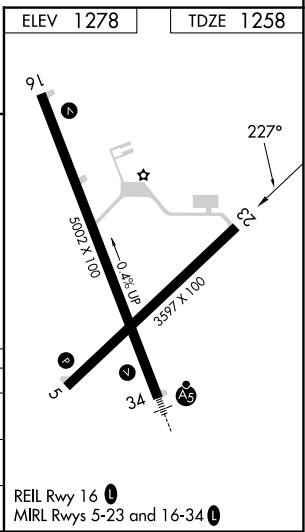
▽ DME/DME RNP-0.3 NA. Helicopter visibility reduction below 3/4 SM NA. When local altimeter setting not received, use Central Wisconsin altimeter setting and increase all MDA 60 feet, increase LP and LNAV visibility Cat C/D 1/4 mile.

▲ MISSED APPROACH: Climb to 3000 direct YAJJU and hold.

ASOS 121.575	MINNEAPOLIS CENTER 124.4 317.7	UNICOM 123.0 (CTAF) 0
------------------------	--	---------------------------------



CATEGORY	A	B	C	D
LP MDA	1640-1	382 (400-1)	1640-1 1/8	382 (400-1 1/8)
LNAV MDA	1660-1	402 (400-1)	1660-1 1/8	402 (400-1 1/8)
C CIRCLING	1760-1	482 (500-1)	2020-2 1/4 742 (800-2 1/4)	2020-2 1/2 742 (800-2 1/2)



EC-3, 22 FEB 2024 to 21 MAR 2024

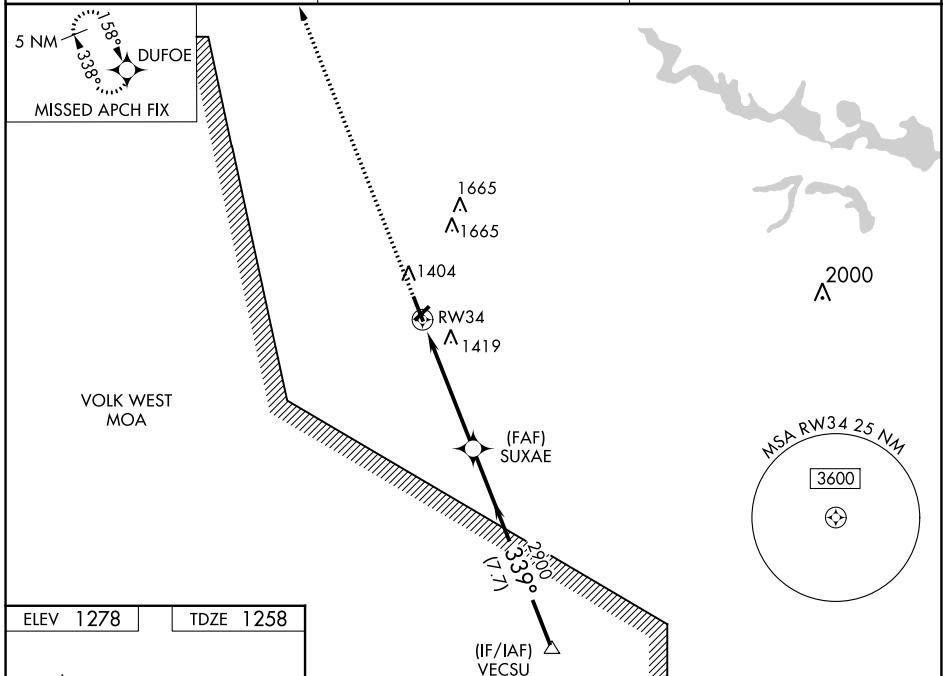
EC-3, 22 FEB 2024 to 21 MAR 2024

WAAS CH 58101 W34A	APP CRS 339°	Rwy Idg TDZE 1258 Apt Elev 1278	5002
--	------------------------	---	-------------

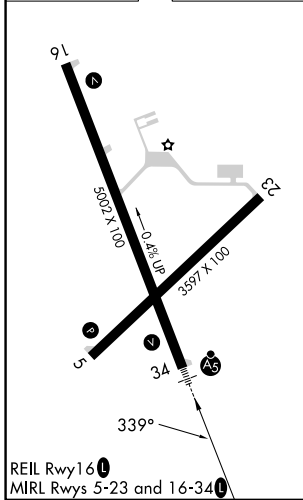
RNAV (GPS) RWY 34

MARSHFIELD MUNI (MFI)

<p>For inoperative MALSR increase LPV all Cats visibility to 1, increase LNAV Cats A and B to 1 and Cat D to 1¼. If local altimeter setting not received, use Central Wisconsin altimeter setting and increase all DAs/MDAs 60 feet. VDP and Baro-VNAV NA when using Central Wisconsin altimeter setting. For uncompensated Baro-VNAV systems, LNAV/VNAV NA below -17° C (2° F) or above 46° C (115° F). DME/DME RNP-0.3 NA.</p>		<p>MALSR</p>	<p>MISSED APPROACH: Climb to 3000 direct DUFOE and hold.</p>
ASOS 121.575	MINNEAPOLIS CENTER 124.4 317.7	UNICOM 123.0 (CTAF)	



ELEV 1278	TDZE 1258
-----------	-----------



3000	DUFOE	SUXAE	VECSU	Procedure Turn NA
* LNAV only	* 1.2 NM to RW34	2900	2900	GP 3.00° TCH 42
1.2	3.8 NM	7.7 NM		
CATEGORY	A	B	C	D
LPV DA	1508-¾ 250 (300-¾)			
LNAV/VNAV DA	1718-1¼ 460 (500-1¼)			
LNAV MDA	1680-¾ 422 (500-¾)		1680-1 422 (500-1)	
CIRCLING	1760-1¾ 482 (500-1¾)	2020-2¼ 742 (800-2¼)	2020-2½ 742 (800-2½)	

EC-3, 22 FEB 2024 to 21 MAR 2024

EC-3, 22 FEB 2024 to 21 MAR 2024

WAAS CH 50532 W05A	APP CRS 046°	Rwy Idg TDZE 1258 Apt Elev 1278
--	------------------------	---

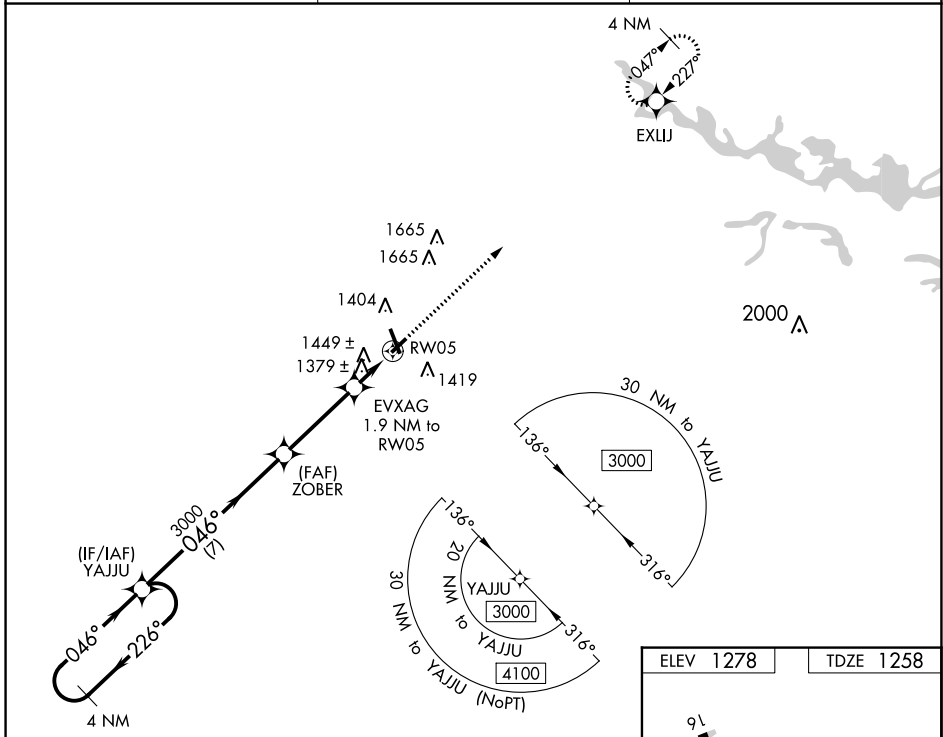
RNAV (GPS) RWY 5

MARSHFIELD MUNI (MFI)

▽ DME/DME RNP-0.3 NA. When local altimeter setting not received, use Central Wisconsin altimeter setting and increase all MDA 60 feet, increase visibility LP Cat C/D ¼.

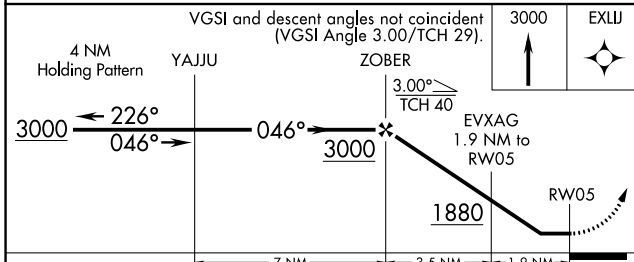
⚠ MISSED APPROACH: Climb to 3000 direct EXLJ and hold.

ASOS 121.575	MINNEAPOLIS CENTER 124.4 317.7	UNICOM 123.0 (CTAF) 0
------------------------	--	---------------------------------

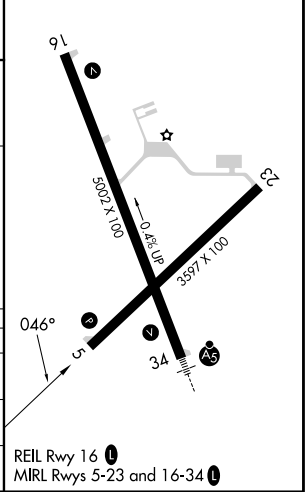


EC-3, 22 FEB 2024 to 21 MAR 2024

EC-3, 22 FEB 2024 to 21 MAR 2024



ELEV 1278	TDZE 1258
-----------	-----------



CATEGORY	A	B	C	D
LP MDA	1640-1	382 (400-1)	1640-1½	382 (500-1½)
LNAM MDA	1700-1	442 (500-1)	1700-1¾	442 (500-1¾)
C CIRCLING	1760-1	482 (500-1)	2020-2¼ 742 (800-2¼)	2020-2½ 742 (800-2½)