

# MANCHESTER NINE DEPARTURE

**TOP ALTITUDE:  
3000**

ATIS 119.55  
CLNC DEL  
135.9  
GND CON  
121.9  
MANCHESTER TOWER  
121.3 239.025  
BOSTON DEP CON  
124.9 269.075

NOTE: RADAR required.

**CAMBRIDGE**  
115.0 CAM  
Chan 97  
N42°59.66'-W73°20.64'  
L-32-34, H-11-12

**CONCORD**  
112.9 CON  
Chan 76  
N43°13.19'-W71°34.53'  
L-32

**KEENE**  
109.4 EEN  
Chan 31  
N42°47.66'-W72°17.51'  
L-32-33, H-11-12

**LEBANON**  
113.7 LEB  
Chan 84  
N43°40.73'-W72°12.96'  
L-32  
Turbojet Aircraft

**GARDNER**  
110.6 GDM  
Chan 43  
N42°32.76'-W72°03.49'  
L-33-34, H-11-12

**BEDDS**  
N42°28.78'  
W71°23.34'  
△

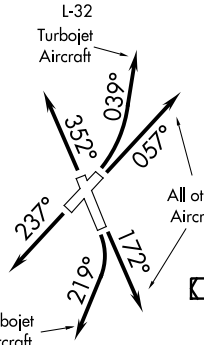
**PEASE**  
116.5 PSM  
Chan 112  
N43°05.07'-W70°49.92'  
L-32-33, H-11-12

**MANCHESTER**  
114.4 MHT  
Chan 91  
N42°52.11'-W71°22.17'  
L-32-33, H-11-12

**KENNEBUNK**  
117.1 ENE  
Chan 118  
N43°25.54'-W70°36.81'  
L-32, H-11-12

**LAWRENCE**  
112.5 LWM  
Chan 72  
N42°44.42'-W71°05.69'  
L-33

**BOSTON**  
112.7 BOS  
Chan 74  
N42°21.45'-W70°59.37'  
L-33-34, H-10-11-12



**TAKEOFF MINIMUMS:**

- Rwy 6: Standard with minimum climb of 206' per NM to 1000, or alternatively, with Standard takeoff minimums and a normal 200' per NM climb gradient, takeoff must occur no later than 1900' prior to DER.
- Rwy 17: 300-1¼ or Standard with minimum climb of 277' per NM to 600.
- Rwy 24: Standard with minimum climb of 321' per NM to 1200.
- Rwy 35: Standard with minimum climb of 253' per NM to 2000.

NOTE: Chart not to scale.

## DEPARTURE ROUTE DESCRIPTION

- TAKEOFF RUNWAY 6:** TURBOJET AIRCRAFT - Climbing left turn heading 039°, then . . . . ALL OTHER AIRCRAFT - Climb heading 057° or as assigned by ATC, then . . . .
  - TAKEOFF RUNWAY 17:** TURBOJET AIRCRAFT - Climbing right turn heading 219°, then . . . . ALL OTHER AIRCRAFT - Climb heading 172° or as assigned by ATC, then . . . .
  - TAKEOFF RUNWAY 24:** Climb heading 237° or as assigned by ATC, then . . . .
  - TAKEOFF RUNWAY 35:** Climb heading 352° or as assigned by ATC, then . . . .
- . . . . expect vectors to assigned Route/Navaid/Fix. Maintain 3000 or as assigned by ATC. Expect clearance to filed altitude/flight level within five (5) minutes after departure.

# MANCHESTER NINE DEPARTURE

# PPORT THREE DEPARTURE (RNAV)

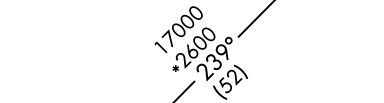
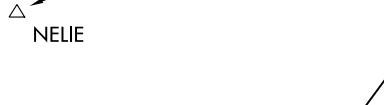
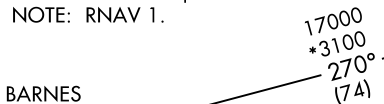
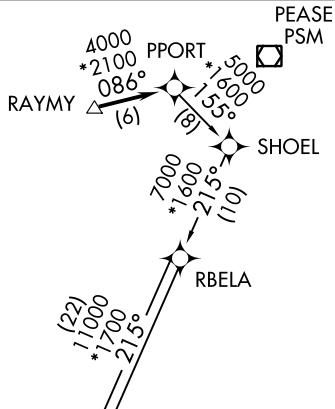
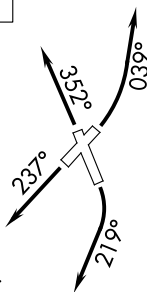
ATIS 119.55  
CLNC DEL  
135.9  
GND CON  
121.9  
MANCHESTER TOWER  
121.3 239.025  
BOSTON DEP CON  
124.9 269.075

**TOP ALTITUDE:  
3000**

### TAKEOFF MINIMUMS:

Rwy 6: Standard with minimum climb of 321' per NM to 3000.  
Rwys 17, 24, 35: Standard with minimum climb of 320' per NM to 3000.

NOTE: For Turbojets only.  
NOTE: DME/DME/IRU or GPS required.  
NOTE: RADAR required.  
NOTE: RNAV 1.



**DEPARTURE ROUTE DESCRIPTION**

**TAKEOFF RWY 6:** Climbing left turn heading 039°, thence. . . .

**TAKEOFF RWY 17:** Climbing right turn heading 219°, thence. . . .

**TAKEOFF RWY 24:** Climb heading 237°, thence. . . .

**TAKEOFF RWY 35:** Climb heading 352°, thence. . . .

. . . . expect vectors to RAYMY, then on depicted route to PPORT. Maintain 3000 or as assigned by ATC. Expect clearance to filed altitude/flight level within five (5) minutes after departure.

BARNES TRANSITION (PPORT3.BAF):  
CALVERTON TRANSITION (PPORT3.CCC):  
NELIE TRANSITION (PPORT3.NELIE):

NOTE: Chart not to scale.

NE-1, 01 MAR 2018 to 29 MAR 2018

NE-1, 01 MAR 2018 to 29 MAR 2018