

WAAS CH <b>50327</b> <b>W27A</b>	APP CRS <b>268°</b>	Rwy Idg TDZE Apt Elev	<b>4095</b> <b>1015</b> <b>1021</b>
--	------------------------	-----------------------------	---

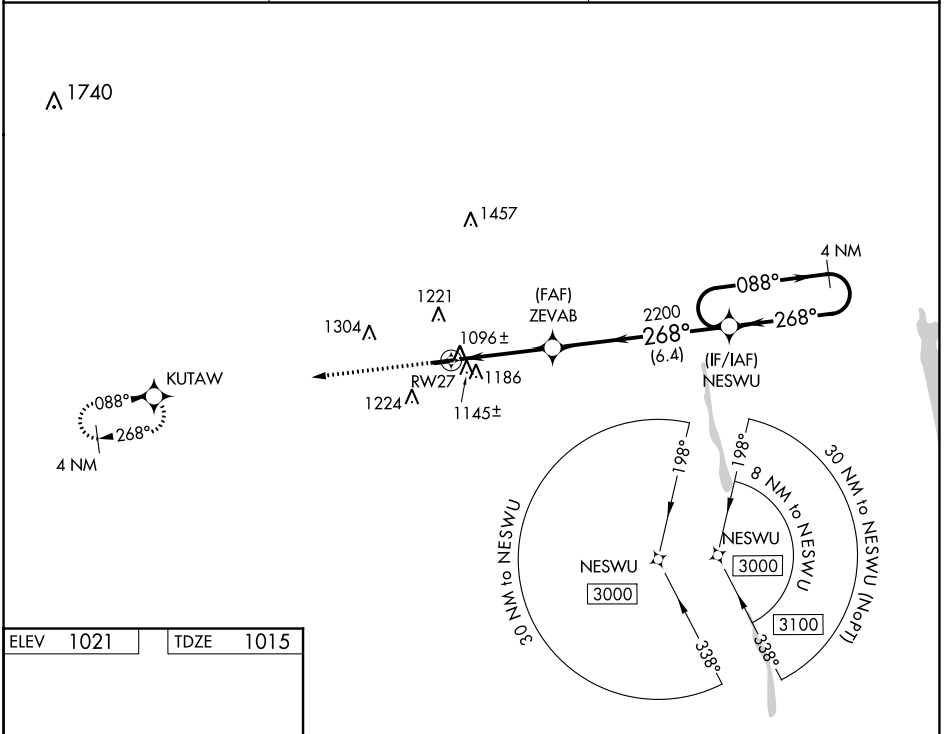
# RNAV (GPS) RWY 27

UNION COUNTY (MRT)

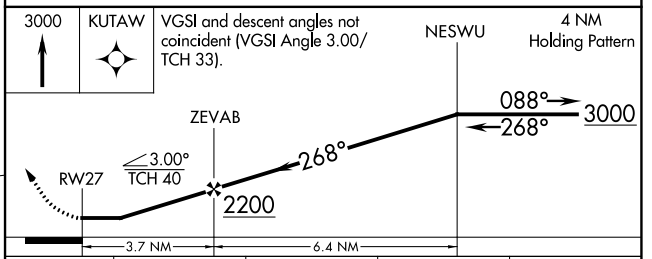
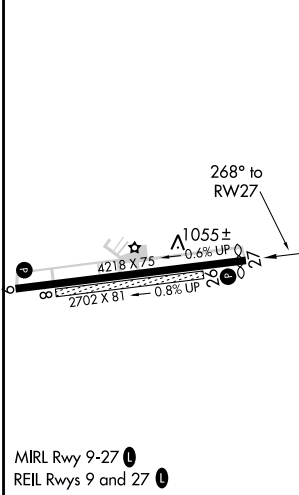
**⚠** Night landing: Rwy 27 NA. DME/DME RNP-0.3 NA. Helicopter visibility reduction below 1 SM NA. When local altimeter setting not received, use John Glenn Columbus Intl altimeter setting and increase all MDA 100 feet, LP and LNAV Cat C and D visibility to 1 3/8 miles and Circling Cat C visibility to 1 3/4 miles.

MISSED APPROACH: Climb to 3000 direct KUTAW and hold.

AWOS-3 <b>119.275</b>	COLUMBUS APP CON <b>125.95 317.775</b>	UNICOM <b>122.8 (CTAF)</b>
--------------------------	---	-------------------------------



ELEV 1021	TDZE 1015
-----------	-----------



CATEGORY	A	B	C	D
LP MDA	1360-1		345 (400-1)	
LNAV MDA	1400-1	385 (400-1)	1400-1 1/8	385 (400-1 1/8)
CIRCLING	1520-1 499 (500-1)	1540-1 519 (600-1)	1540-1 1/2 519 (600-1 1/2)	1580-2 559 (600-2)

WAAS CH <b>72827</b> <b>W09A</b>	APP CRS <b>088°</b>	Rwy Idg TDZE Apt Elev	<b>4218</b> <b>1021</b> <b>1021</b>
--	------------------------	-----------------------------	---

**RNAV (GPS) RWY 9**  
UNION COUNTY (MRT)

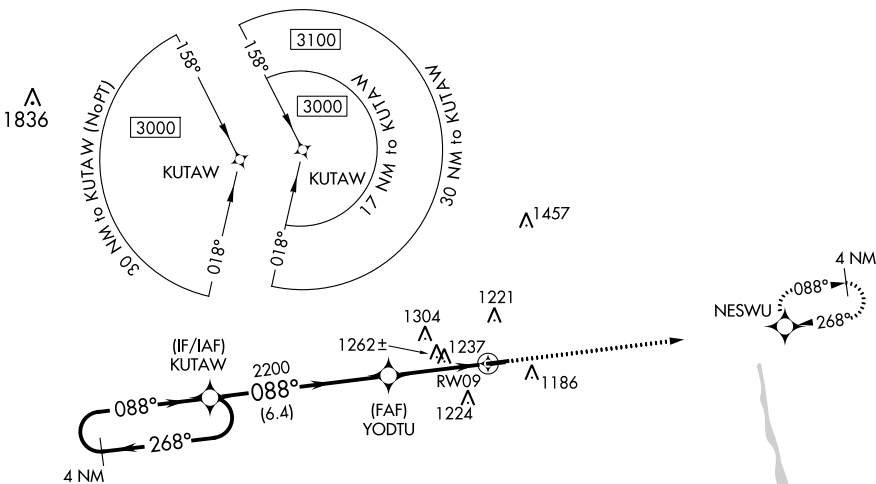
**⚠** Night landing: Rwy 27 NA. Helicopter visibility reduction below 3/4 SM NA. DME/DME RNP-0.3 NA. When local altimeter setting not received, use John Glenn Columbus Intl altimeter setting and increase all MDA 100 feet, LP Cats C and D visibility to 1 1/8 miles, LNAV Cats C and D and Circling Cat C visibility to 1 1/4 miles.

MISSED APPROACH: Climb to 3000 direct NESWU and hold.

AWOS-3  
**119.275**

COLUMBUS APP CON  
**125.95 317.775**

UNICOM  
**122.8 (CTAF)**

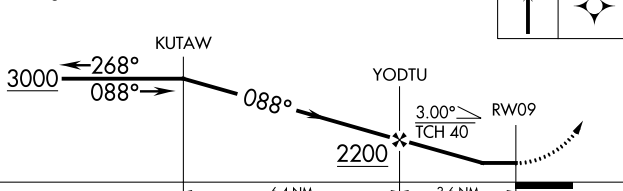


EC-2, 25 FEB 2021 to 25 MAR 2021

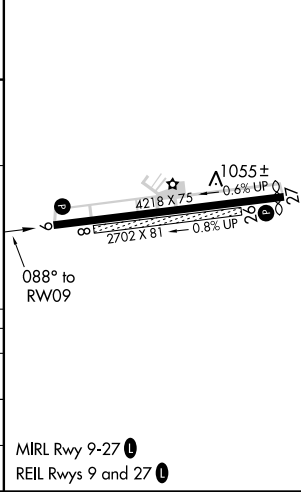
EC-2, 25 FEB 2021 to 25 MAR 2021

ELEV 1021	TDZE 1021
-----------	-----------

4 NM Holding Pattern VGSI and descent angles not coincident (VGSI Angle 3.00/TCH 25).



CATEGORY	A	B	C	D
LP MDA	1500-1	479 (500-1)	1500-1 3/8	479 (500-1 3/8)
LNAV MDA	1520-1	499 (500-1)	1520-1 3/8	499 (500-1 3/8)
CIRCLING	1520-1 499 (500-1)	1540-1 519 (600-1)	1540-1 1/2 519 (600-1 1/2)	1580-2 559 (600-2)



MIRL Rwy 9-27  
REIL Rwy 9 and 27