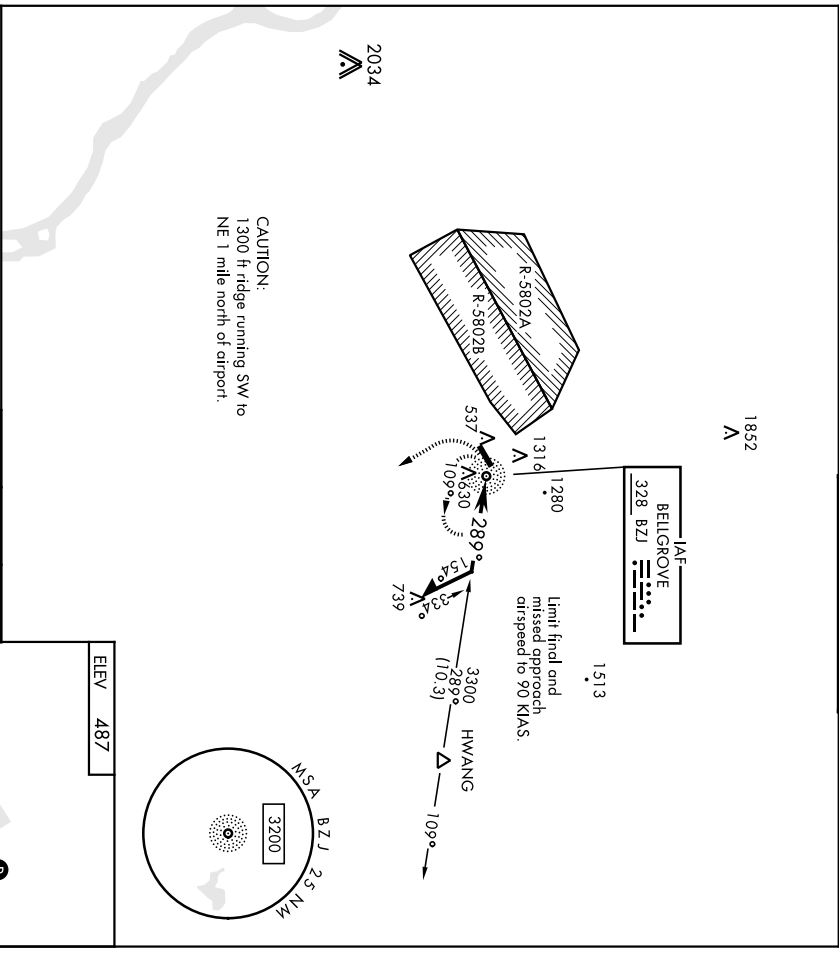
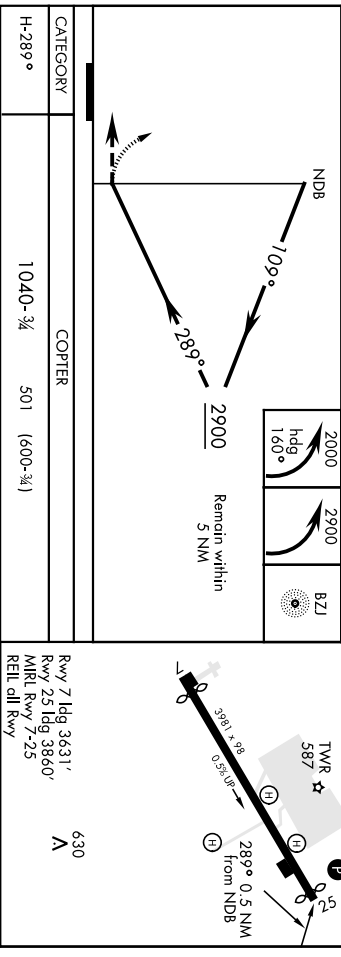


NDB BZJ 328	APCH CRS 289°	Rwy Idg N/A	TDZE N/A	Appt Elev 487	Alt-6422 [USA]
ASOS 124.175					MUIR TOWER ★ 126.2 (CTAF) 290.5
HARRISBURG APP CON 118.25 269.45			GND CON 121.625 269.525		

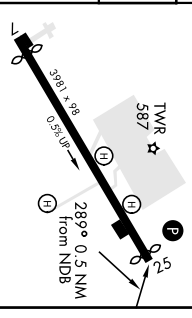
When local altimeter setting not received, use Harrisburg INTL altimeter setting and increase MDA 80 ft.
 Proceed VFR from BZJ NDB or conduct the specified missed approach.
 MISSED APPROACH: Climb to 2000 via heading 160° then climbing left turn to 2900 direct BZJ NDB and hold.



CAUTION:
 1300 ft ridge running SW to NE 1 mile north of airport.



Remain within 3 NM



FORT INDIANTOWN GAP, PENNSYLVANIA 40°26'N-76°34'W MUIR AAF (KMUJ)
 And# 3 20030
COPTER NDB Y-289°

COPTER NDB Z-289°

AI-64422 [USA]

MUIR AAF (KMUJ)

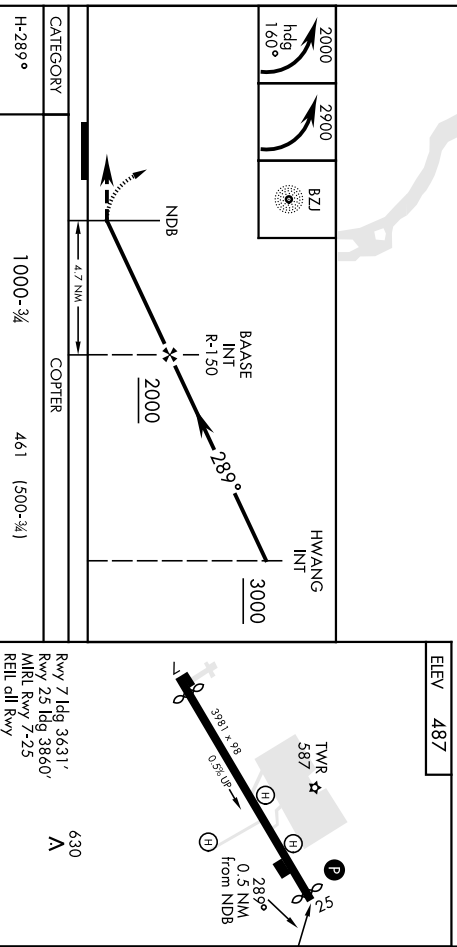
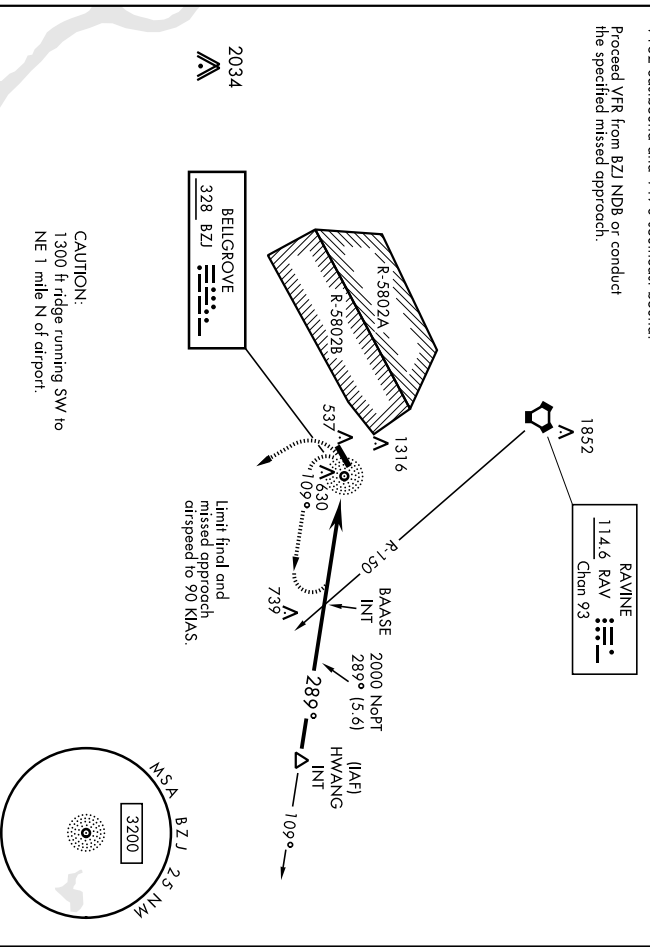
NDB BZJ 328	APCH CRS 289°	Rwy Idg N/A	TDZE N/A	Appt Elev 487
------------------------------	--------------------------------	------------------------------	---------------------------	--------------------------------

ASOS 124.175	HARRISBURG APP CON 118.25 269.45
-------------------------------	---

MUIR TOWER * 126.2 [C1AF] 290.5	GND CON 121.625 269.525
---	--

Procedure NA for arrivals at HWANG INT via V162 eastbound and V170 southeast bound.

Proceed VFR from BZJ NDB or conduct the specified missed approach.



FORT INDIANTOWN GAP, PENNSYLVANIA
Andr: 2 20030
40°26'N-76°34'W

MUIR AAF (KMUJ)
COPTER NDB Z-289°

FORT INDIANTOWN GAP, PENNSYLVANIA

COPTER RNAV (GPS) RWY 25

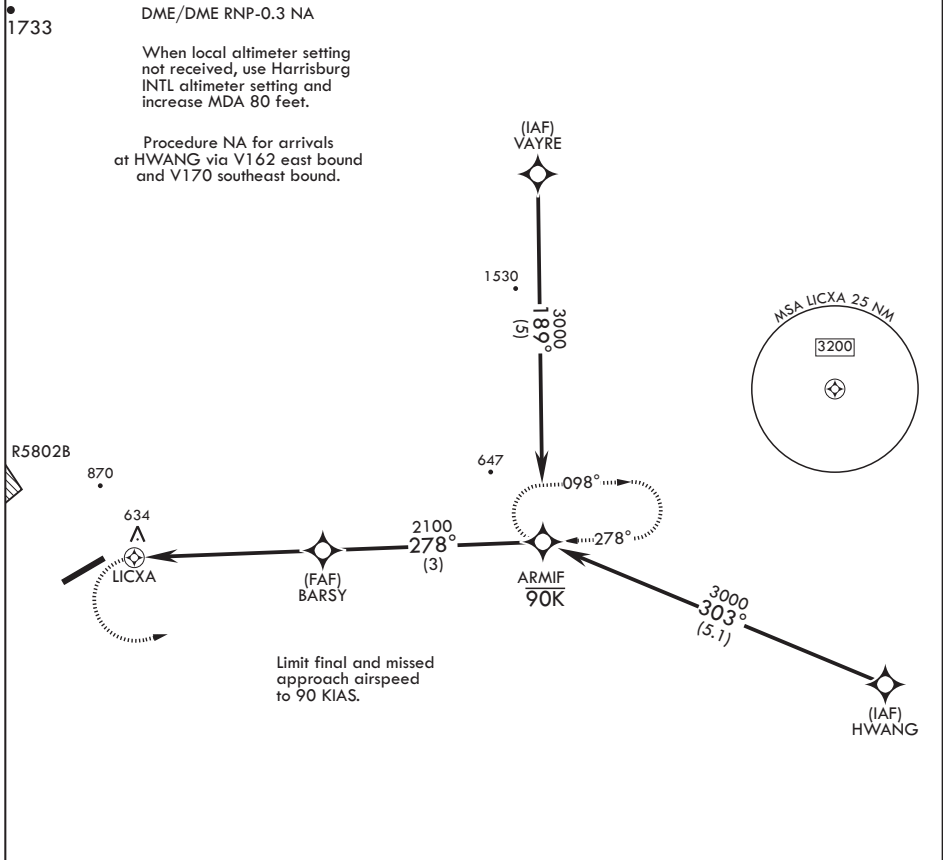
APCH CRS	Rwy Idg	3860
278°	TDZE	487
	Arpt Elev	487

AL-6422 (USA)

MUIR AAF (KMUI)

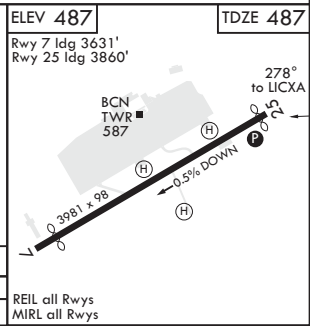
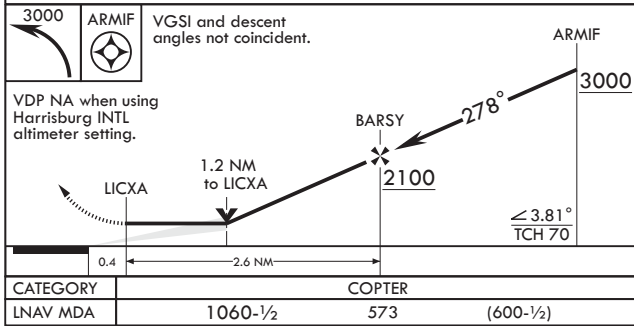
		MISSED APPROACH: Climbing left turn to 3000 direct ARMIF WPT and hold.	
--	--	--	--

ASOS 124.175	HARRISBURG APP CON/DEP CON 118.25 269.45	TOWER ★ 126.2 (CTAF) 0★ 290.5	GND CON 121.625 269.525
------------------------	--	---	-----------------------------------



NE-4, 07 OCT 2021 to 04 NOV 2021

NE-4, 07 OCT 2021 to 04 NOV 2021



CATEGORY	COPTER		REIL all Rwys MIRL all Rwys
LNAV MDA	1060-1/2	573 (600-1/2)	

FORT INDIANTOWN GAP, PENNSYLVANIA

40°26'N - 76°34'W

MUIR AAF (KMUI)

Amdt 1A 10SEP20

COPTER RNAV (GPS) RWY 25

FORT INDIANTOWN GAP, PENNSYLVANIA

RNAV (GPS)-B

APCH CRS 054°	Rwy Idg TDZE Arprt Elev	N/A N/A 487
-------------------------	-------------------------------	--------------------------

AL-6422 (USA)

MUIR AAF (KMUI)

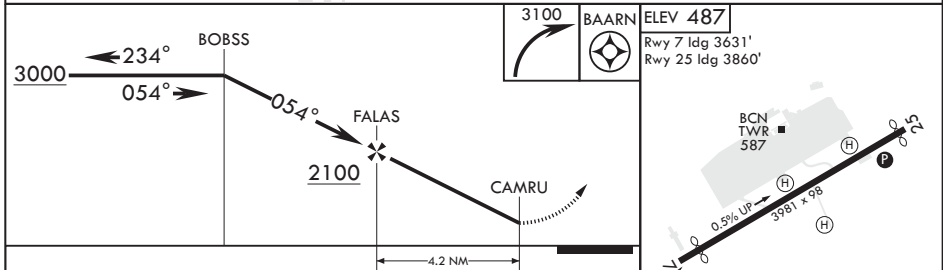
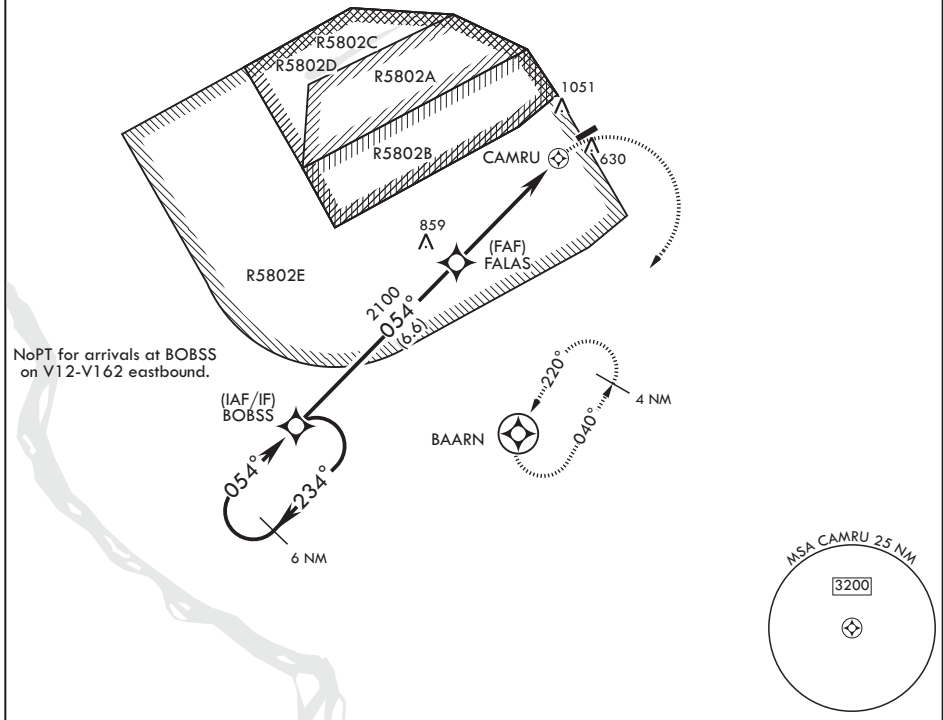
⚠ Circling N of Rwy 7-25 not authorized.
⚠ DME/DME RNP-0.3 NA.
⚠ Helicopter visibility reduction below 1 SM NA.

MISSED APPROACH: Climbing right turn to 3100 direct BAARN and hold.

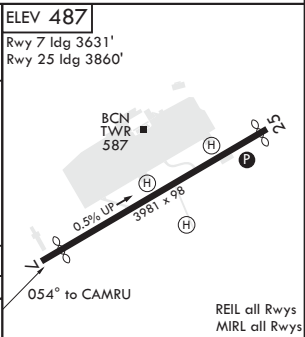
ASOS 124.175	HARRISBURG APP CON/DEP CON 118.25 269.45	TOWER* 126.2 (CTAF) 290.5	GND CON 121.625 269.525
------------------------	--	-------------------------------------	-----------------------------------

When local altimeter setting not received, use Harrisburg Intl altimeter setting: increase all MDA 80 feet and CAT BC vis 1/4 SM.

1775



CATEGORY	A	B	C	D
C CIRCLING	1420-1¼	933 (1000-1¼)	1420-2¾ 933 (1000-2¾)	NA



FORT INDIANTOWN GAP, PENNSYLVANIA
 Amdt 2A 10SEP20

40°26'N - 76°34'W

MUIR AAF (KMUI)

RNAV (GPS)-B

NE-4, 07 OCT 2021 to 04 NOV 2021

NE-4, 07 OCT 2021 to 04 NOV 2021