

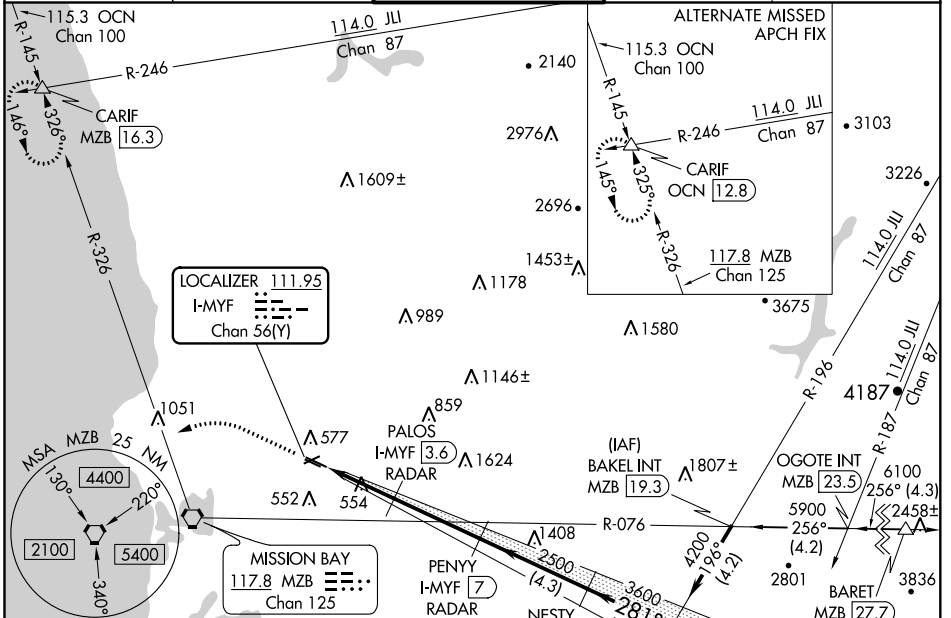
LOC/DME I-MYF <b>111.95</b> Chan <b>56(Y)</b>	APP CRS <b>281°</b>	Rwy Idg TDZE <b>423</b> Apt Elev <b>427</b>	<b>3399</b>
---	------------------------	---	-------------

# ILS or LOC RWY 28R

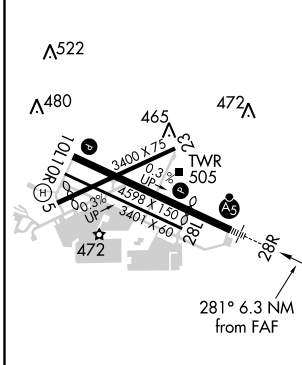
MONTGOMERY-GIBBS EXECUTIVE (MYF)

DME or RADAR required.		MALS R	MISSED APPROACH: Climb to 1100 then climbing left turn to 3000 on heading 270° and MZB VORTAC R-326 to CARIF INT/MZB 16.3 DME and hold.	
▼ Rwy 28R helicopter visibility reduction below ¾ SM NA.				

ATIS <b>126.9</b>	SOCAL APP CON <b>124.35 279.625</b>	MONTGOMERY TOWER ★ <b>119.2 (CTAF) 0 269.4</b>	GND CON <b>118.225</b>	CLNC DEL <b>123.725</b>
----------------------	--	---	---------------------------	----------------------------



ELEV <b>427</b>	TDZE <b>423</b>
-----------------	-----------------



REIL Rwy 28L  
MIRL Rwy 10L-28R

FAF to MAP 6.3 NM

Knots	60	90	120	150	180
Min:Sec	6:18	4:12	3:09	2:31	2:06

1100	3000	MZB R-326	CARIF	MIBBY INT I-MYF 14.5																				
↑	hdg 270°																							
* LOC only																								
I-MYF 0.7	* I-MYF 1.8	PALOS I-MYF 3.6 RADAR	PENNY I-MYF 7 RADAR	NESTY I-MYF 11.2 RADAR																				
1.1 NM	1.8 NM	3.4 NM	4.3 NM	3.3 NM																				
<table border="1"> <thead> <tr> <th>CATEGORY</th> <th>A</th> <th>B</th> <th>C</th> <th>D</th> </tr> </thead> <tbody> <tr> <td>S-ILS 28R</td> <td>673-¾</td> <td>250 (300-¾)</td> <td></td> <td>NA</td> </tr> <tr> <td>S-LOC 28R</td> <td>820-¾</td> <td>397 (400-¾)</td> <td></td> <td>NA</td> </tr> <tr> <td>CIRCLING</td> <td>920-1</td> <td>493 (500-1)</td> <td></td> <td>NA</td> </tr> </tbody> </table>					CATEGORY	A	B	C	D	S-ILS 28R	673-¾	250 (300-¾)		NA	S-LOC 28R	820-¾	397 (400-¾)		NA	CIRCLING	920-1	493 (500-1)		NA
CATEGORY	A	B	C	D																				
S-ILS 28R	673-¾	250 (300-¾)		NA																				
S-LOC 28R	820-¾	397 (400-¾)		NA																				
CIRCLING	920-1	493 (500-1)		NA																				

SW-3, 08 OCT 2020 to 05 NOV 2020

SW-3, 08 OCT 2020 to 05 NOV 2020

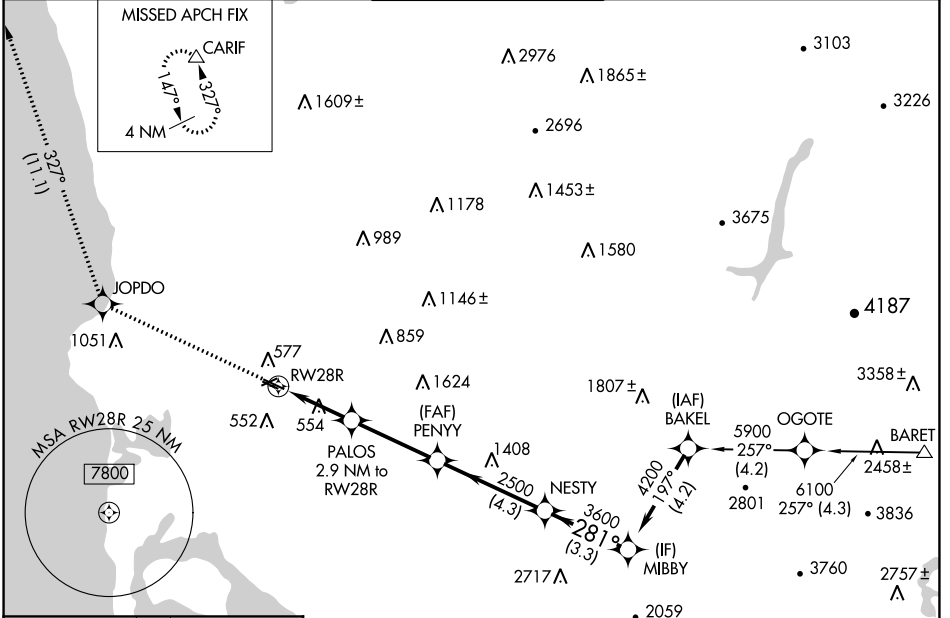
WAAS CH <b>45710</b> <b>W28A</b>	APP CRS <b>281°</b>	Rwy Idg TDZE Apt Elev	<b>3399</b> <b>423</b> <b>427</b>
--	------------------------	-----------------------------	---

# RNAV (GPS) RWY 28R

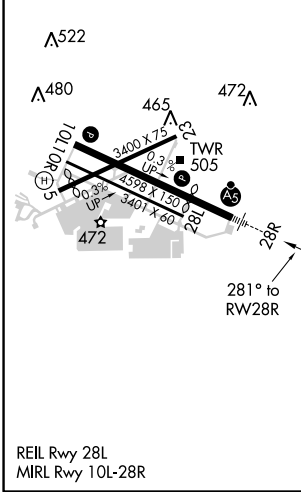
MONTGOMERY-GIBBS EXECUTIVE (M.Y.F.)

RNP APCH.	MALSR	MISSED APPROACH: Climb to 3000 direct JOPDO and on track 327° to CARIF and hold.
<p>▼ Rwy 28R helicopter visibility reduction below ¾ SM NA.</p> <p>▲ For uncompensated Baro-VNAV systems, LNAV/VNAV NA below -15°C or above 54°C.</p>		

ATIS <b>126.9</b>	SOCAL APP CON <b>124.35 279.625</b>	MONTGOMERY TOWER ★ <b>119.2 (CTAF) 0 269.4</b>	GND CON <b>118.225</b>	CLNC DEL <b>123.725</b>
----------------------	--	---	---------------------------	----------------------------



ELEV <b>427</b>	TDZE <b>423</b>
-----------------	-----------------



	3000	JOPDO	CARIF					
	↑	✧	tr 327°	△				
	*LNAV only							
		PALOS 2.9 NM to RWY 28R	PENNY 2500	NESTY	MIBBY			
		*1.2 NM to RWY 28R		3600	4200			GP 3.00° TCH 41
		RWY 28R		1380*	2500			
		1.2 NM	1.7 NM	3.4 NM	4.3 NM	3.3 NM		
CATEGORY		A	B	C	D			
LPV DA		673-¾	250 (300-¾)			NA		
LNAV/VNAV DA		750-¾	327 (400-¾)			NA		
LNAV MDA		840-¾	417 (500-¾)			NA		
CIRCLING		920-1	493 (500-1)			NA		

SW-3, 08 OCT 2020 to 05 NOV 2020

SW-3, 08 OCT 2020 to 05 NOV 2020