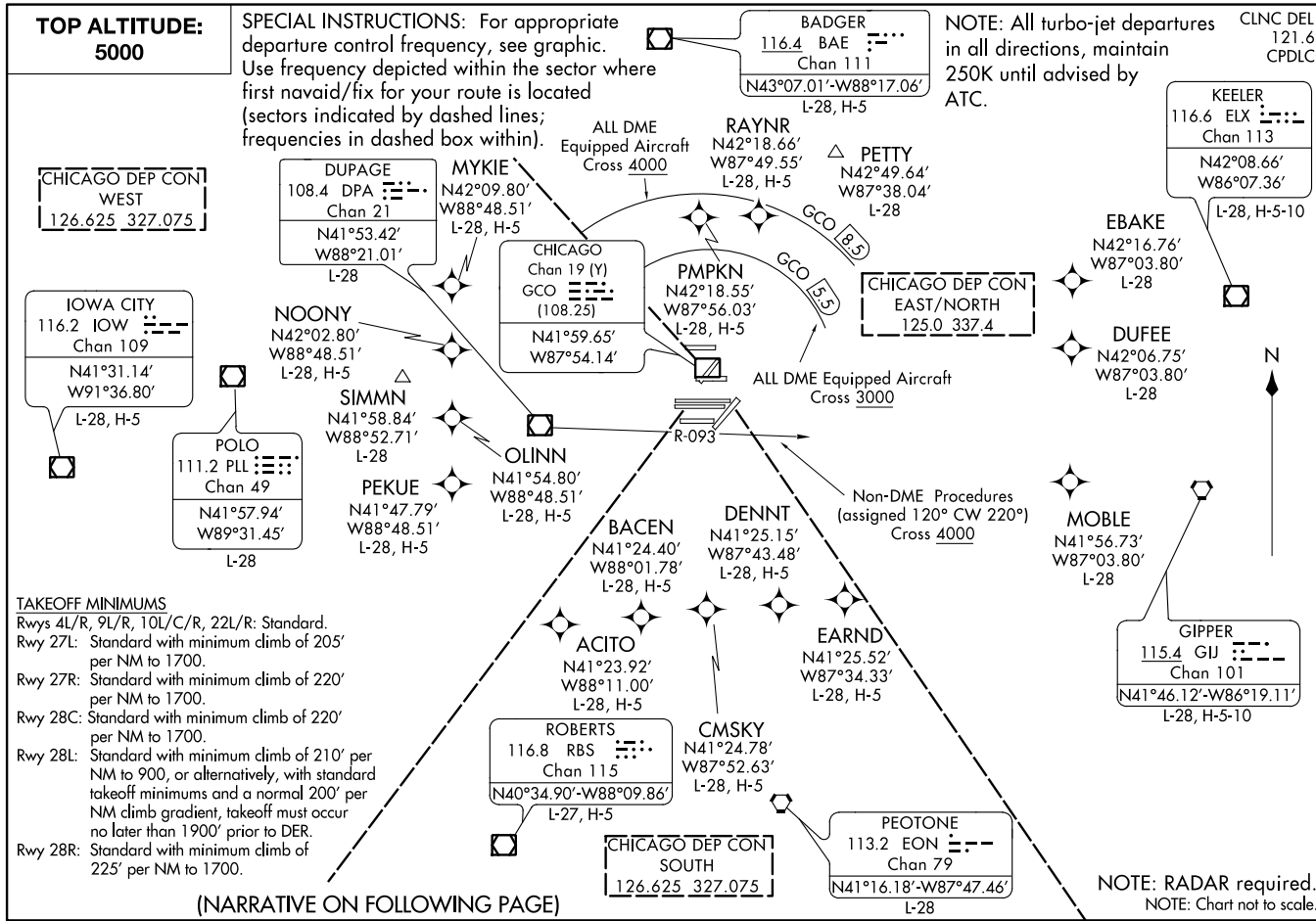


03JAN19

O'HARE FIVE DEPARTURE

CHICAGO, ILLINOIS  
CHICAGO O'HARE INTL (ORD)



(NARRATIVE ON FOLLOWING PAGE)

19031

O'HARE FIVE DEPARTURE

CHICAGO O'HARE INTL (ORD)  
CHICAGO, ILLINOIS

AL-166 (FAA)

# O'HARE FIVE DEPARTURE



## DEPARTURE ROUTE DESCRIPTION

ALL AIRCRAFT: Expect RADAR vectors to first enroute navaid/fix.  
Expect clearance to requested altitude/flight level ten minutes after departure.

ALL DME EQUIPPED AIRCRAFT: Cross 5.5 DME arc of GCO DME at or above 3000,  
cross 8.5 DME arc of GCO DME at or above 4000, maintain 5000 or assigned altitude.  
If unable to comply advise ATC as soon as possible prior to departure.

EC-3, 05 DEC 2019 to 02 JAN 2020

EC-3, 05 DEC 2019 to 02 JAN 2020