

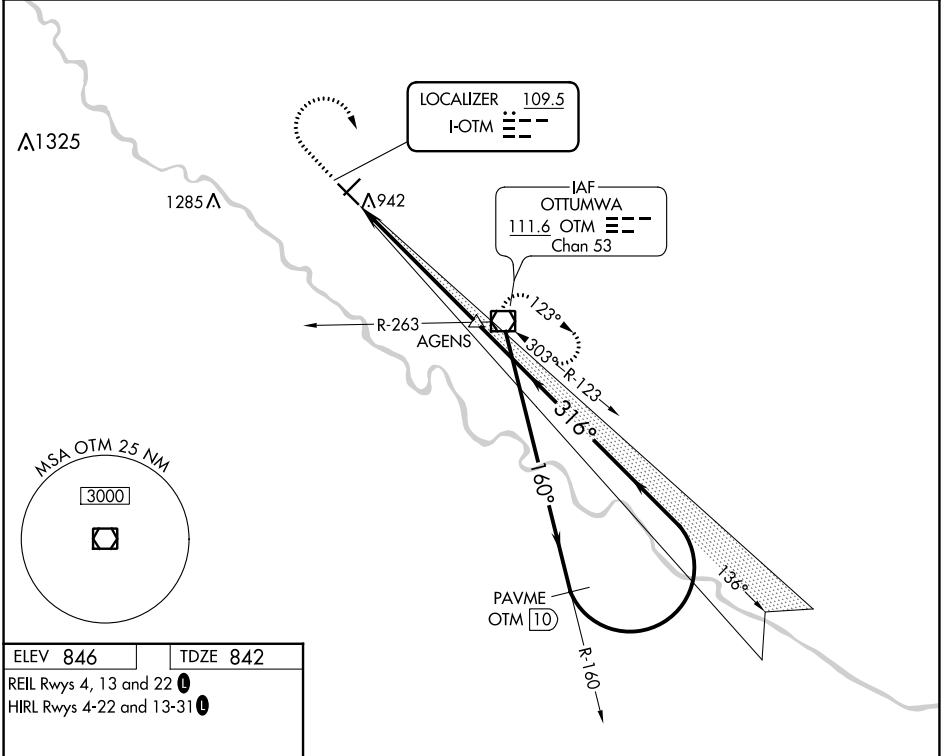
LOC I-OTM 109.5	APP CRS 316°	Rwy Idg 6001
		TDZE 842
		Apt Elev 846

ILS or LOC RWY 31

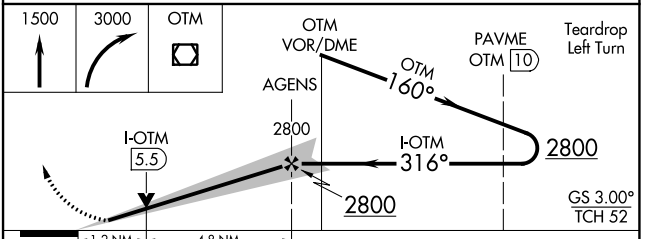
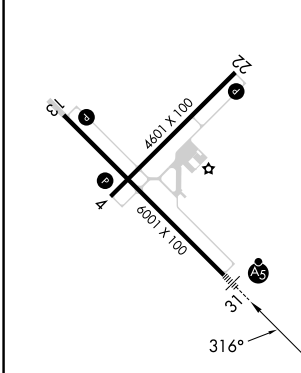
OTTUMWA RGNL (OTM)

DME required.	MALS R	MISSED APPROACH: Climb to 1500 then climbing right turn to 3000 direct OTM VOR/DME and hold, continue climb-in-hold to 3000.
Autopilot coupled approach NA below 1310.		

ASOS 124.175	CHICAGO CENTER 118.15 335.575	UNICOM 123.0 (CTAF) 0
------------------------	---	---------------------------------



ELEV 846	TDZE 842
REIL Rwy 4, 13 and 22	
HIRL Rwy 4-22 and 13-31	



CATEGORY	A	B	C	D
S-ILS 31	1042-½ 200 (200-½)			NA
S-LOC 31	1280-½	438 (500-½)	1280-¾ 438 (500-¾)	NA
<input checked="" type="checkbox"/> CIRCLING	1280-1 434 (500-1)	1300-1 454 (500-1)	1400-1½ 554 (600-1½)	NA

FAF to MAP 6 NM					
Knots	60	90	120	150	180
Min:Sec	6:00	4:00	3:00	2:24	2:00

NC-3, 22 FEB 2024 to 21 MAR 2024

NC-3, 22 FEB 2024 to 21 MAR 2024

OTTUMWA, IOWA

AL-915 (FAA)

22307

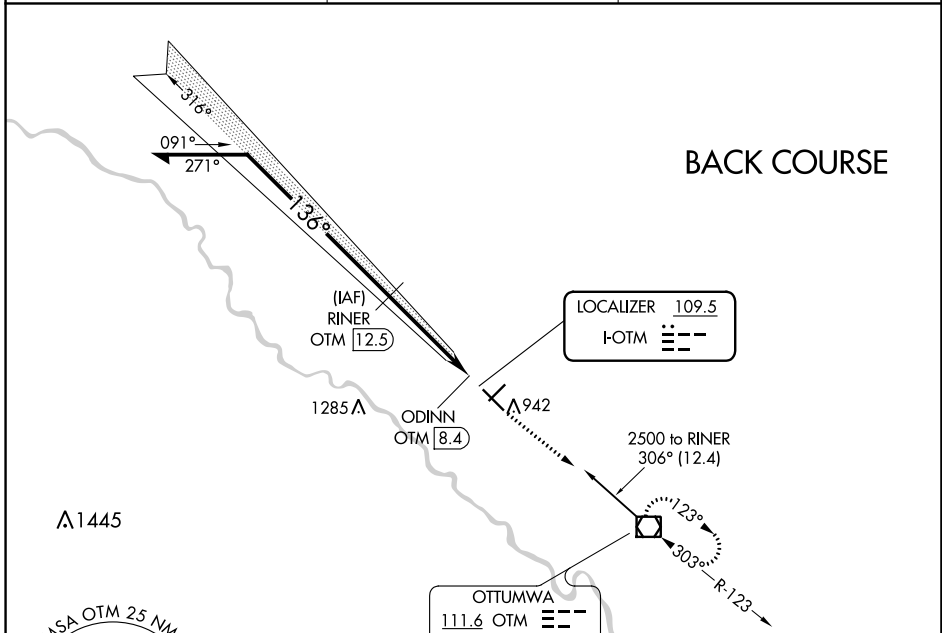
LOC I-OTM 109.5	APP CRS 136°	Rwy ldg TDZE Apt Elev	6001 842 846
---------------------------	------------------------	-----------------------------	---

LOC BC RWY 13

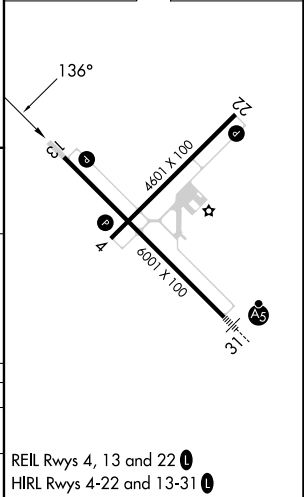
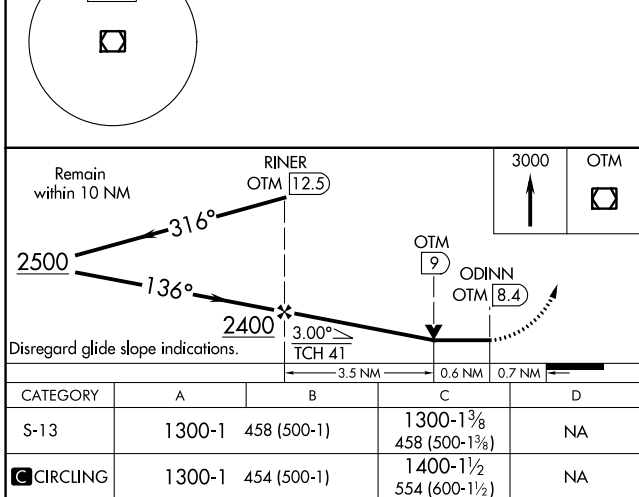
OTTUMWA RGNL (OTM)

DME required.	MISSED APPROACH: Climb to 3000 direct OTM VOR/DME and hold, continue climb-in-hold to 3000.
DME from OTM VOR/DME. Simultaneous reception of I-OTM and OTM required.	

ASOS 124.175	CHICAGO CENTER 118.15 335.575	UNICOM 123.0 (CTAF) 0
------------------------	---	---------------------------------



ELEV 846	TDZE 842
----------	----------



OTTUMWA, IOWA
Amdt 4 08SEP22

41°06'N-92°27'W

OTTUMWA RGNL (OTM) LOC BC RWY 13

NC-3, 22 FEB 2024 to 21 MAR 2024

NC-3, 22 FEB 2024 to 21 MAR 2024

WAAS CH 86300 W13A	APP CRS 136°	Rwy Idg TDZE Apt Elev	6001 842 846
--	------------------------	-----------------------------	---

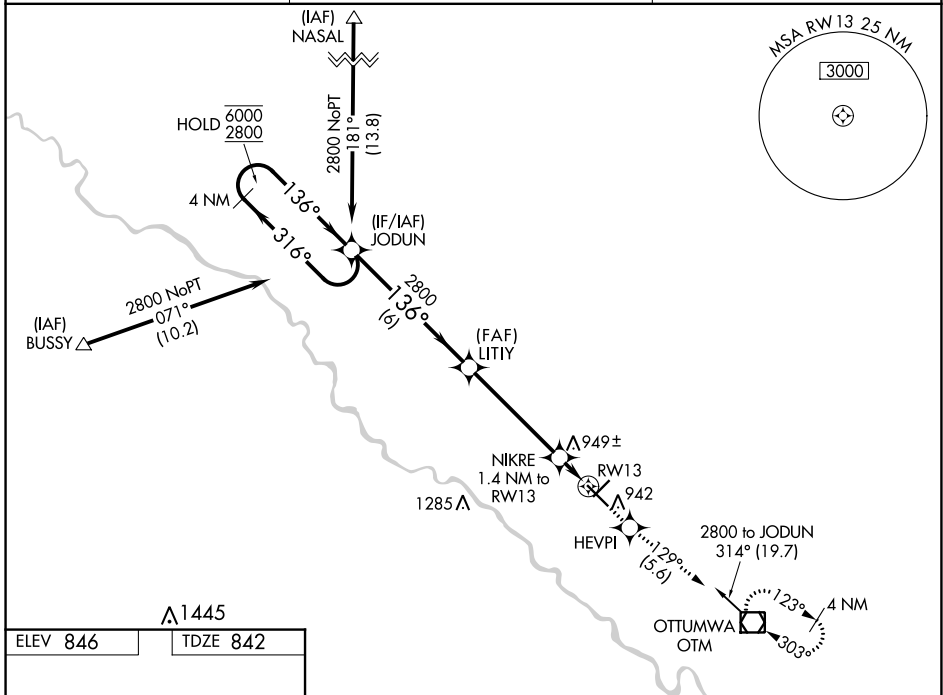
RNAV (GPS) RWY 13

OTTUMWA RGNL (OTM)

RNP APCH - GPS.
 ⚠ For uncompensated Baro-VNAV systems, LNAV/VNAV NA below -22°C or above 54°C.

MISSED APPROACH: Climb to 2800 direct HEVPI and on track 129° to OTM VOR/DME and hold, continue climb-in-hold to 2800.

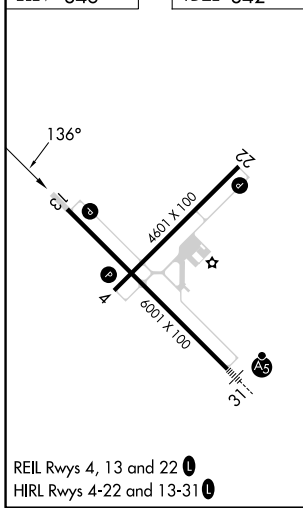
ASOS 124.175	CHICAGO CENTER 118.15 335.575	UNICOM 123.0 (CTAF) 0
------------------------	---	--



NC-3, 22 FEB 2024 to 21 MAR 2024

NC-3, 22 FEB 2024 to 21 MAR 2024

ELEV 846	TDZE 842
----------	----------



	4 NM Holding Pattern	JODUN	LITTY	2800	HEVPI	OTM
	6000 ← 316°	→ 136°	→ 2800	↑	✦ fr 129°	◻
	GP 3.00°				NIKRE 1.4 NM to RW13	
	TCH 41					RW13
		6 NM	4.6 NM	1.4 NM		
CATEGORY	A	B	C	D		
LPV DA		1042- ³ / ₄	200 (200- ³ / ₄)			NA
LNAV/VNAV DA		1109- ⁷ / ₈	267 (300- ⁷ / ₈)			NA
LNAV MDA		1200-1	358 (400-1)			NA
C CIRCLING	1260-1 414 (500-1)	1300-1 454 (500-1)	1400-1 ¹ / ₂ 554 (600-1 ¹ / ₂)			NA

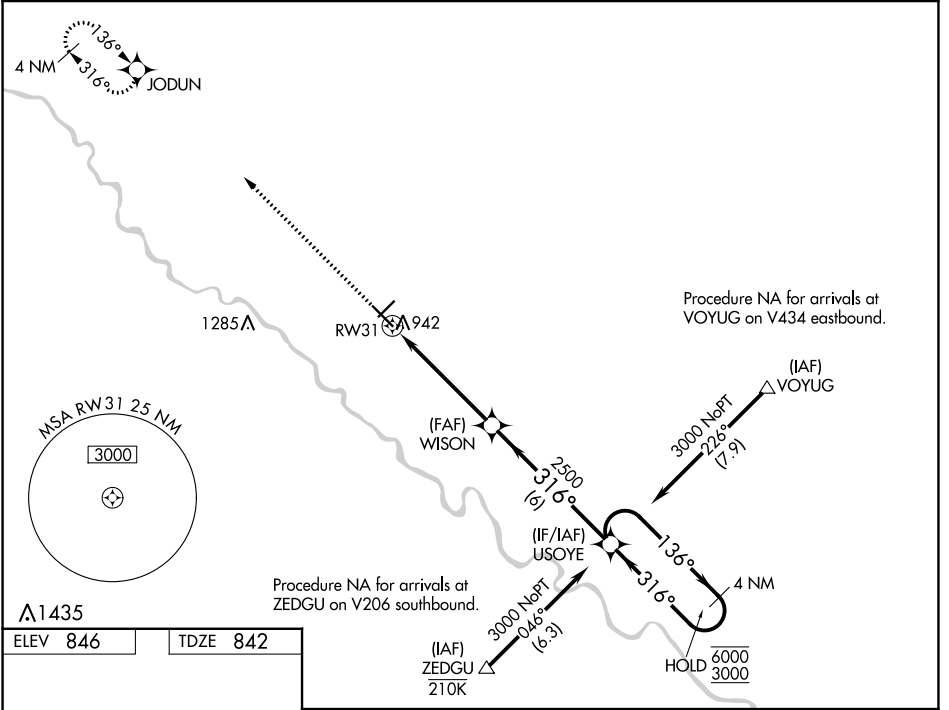
WAAS CH 93611 W31A	APP CRS 316°	Rwy Idg TDZE Apt Elev	6001 842 846
--	------------------------	-----------------------------	---

RNAV (GPS) RWY 31

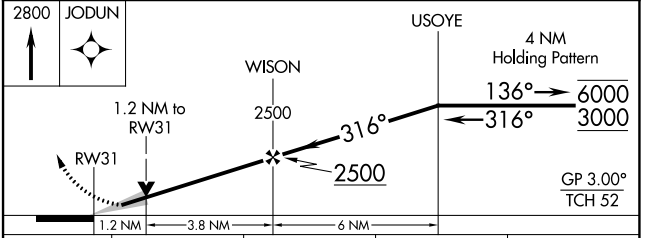
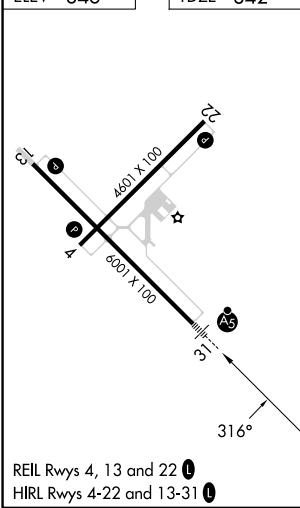
OTTUMWA RGNL (OTM)

RNP APCH - GPS.	MALSR	MISSED APPROACH: Climb to 2800 direct JODUN and hold.
For uncompensated Baro-VNAV systems, LNAV/VNAV NA below -20°C or above 54°C.		

ASOS 124.175	CHICAGO CENTER 118.15 335.575	UNICOM 123.0 (CTAF)
------------------------	---	-------------------------------



ELEV 846	TDZE 842
----------	----------



CATEGORY	A	B	C	D
LPV DA	1042-1/2		200 (200-1/2)	NA
LNAV/VNAV DA	1243-3/4		401 (400-3/4)	NA
LNAV MDA	1280-1/2	438 (500-1/2)	1280-3/4 438 (500-3/4)	NA
CIRCLING	1280-1 434 (500-1)	1300-1 454 (500-1)	1400-1/2 554 (600-1/2)	NA

NC-3, 22 FEB 2024 to 21 MAR 2024

NC-3, 22 FEB 2024 to 21 MAR 2024

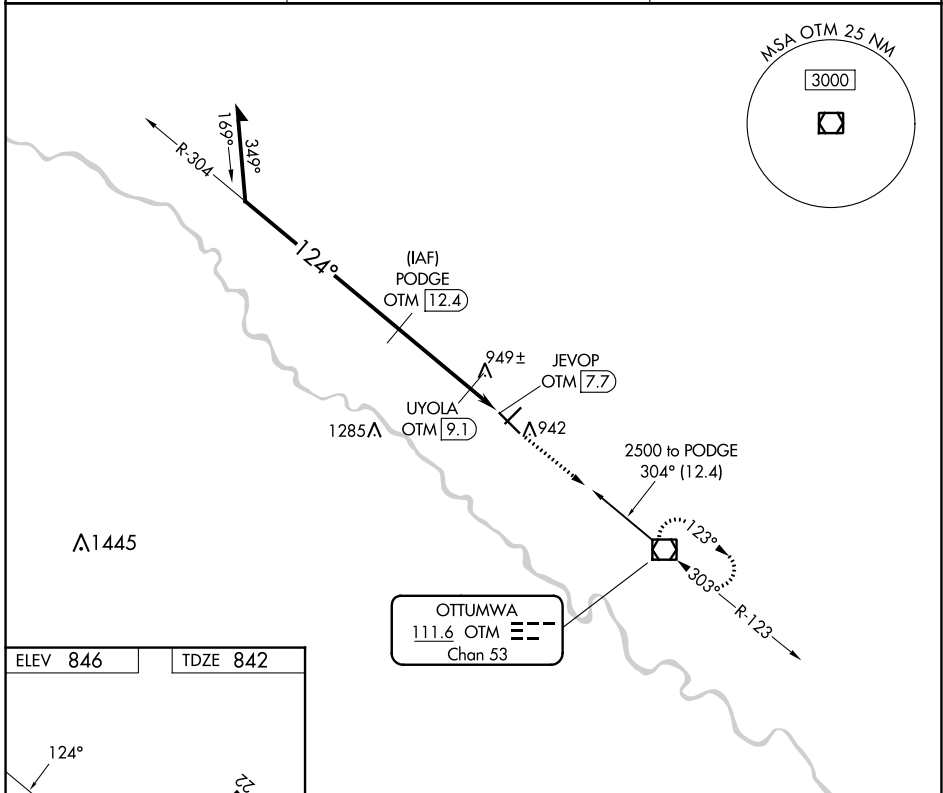
VOR/DME OTM 111.6 Chan 53	APP CRS 124°	Rwy Idg TDZE Apt Elev	6001 842 846
---	------------------------	-----------------------------	---

VOR RWY 13

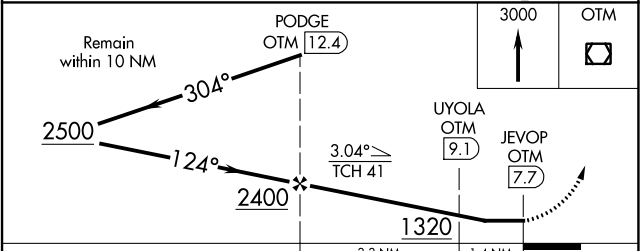
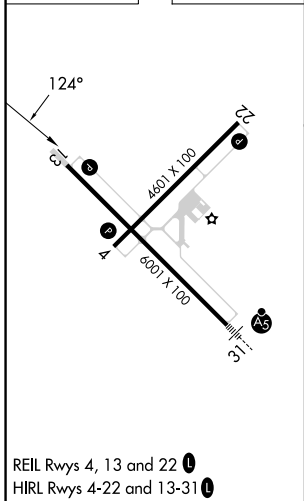
OTTUMWA RGNL (OTM)

DME required.	MISSED APPROACH: Climb to 3000 direct OTM VOR/DME and hold, continue climb-in-hold to 3000.
---------------	---

ASOS 124.175	CHICAGO CENTER 118.15 335.575	UNICOM 123.0 (CTAF) 0
------------------------	---	---------------------------------



ELEV 846	TDZE 842
----------	----------



CATEGORY	A	B	C	D
S-13	1200-1 358 (400-1)			NA
CIRCLING	1260-1 414 (500-1)	1300-1 454 (500-1)	1400-1½ 554 (600-1½)	NA

NC-3, 22 FEB 2024 to 21 MAR 2024

NC-3, 22 FEB 2024 to 21 MAR 2024