


LOC/DME I-OGO <b>108.55</b> Chan <b>22 (Y)</b>	APP CRS <b>132°</b>	Rwy ldg <b>5002</b> TDZE <b>962</b> Apt Elev <b>962</b>
--	------------------------	---

# ILS or LOC RWY 13

LIVINGSTON COUNTY SPENCER J HARDY (OZW)

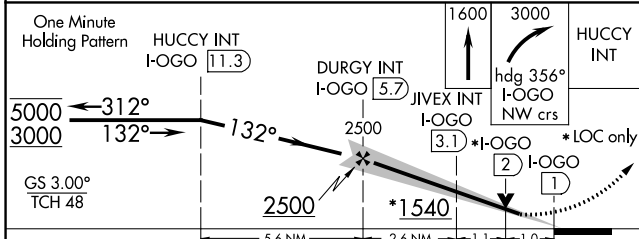
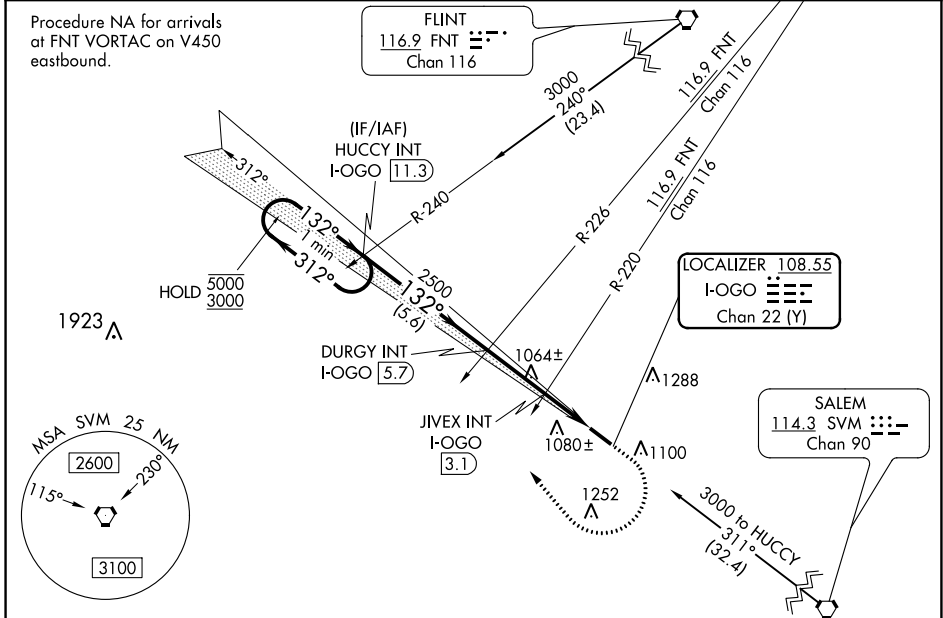
**▼** For inop ALS, increase LOC Cat C and D visibility to 1½ SM, and JIVEX fix minimums S-13 Cat C and D visibility to 1 SM.

**▲ NA**

**MALSRL** 

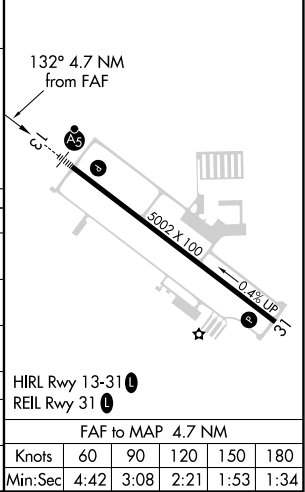
**MISSED APPROACH:** Climb to 1600 then climbing right turn to 3000 heading 356° and I-OGO NW course to HUCCY INT/I-OGO 11.3 DME and hold.

AWOS-3 <b>118.875</b>	DETROIT APP CON <b>132.35 284.0</b>	CLNC DEL <b>121.725 (GCO)</b>	UNICOM <b>123.0 (CTAF) 0</b>
--------------------------	--	----------------------------------	---------------------------------



ELEV 962	TDZE 962
----------	----------

CATEGORY	A	B	C	D
S-ILS 13	1162-½		200 (200-½)	
S-LOC 13	1540-½ 578 (600-½)		1540-1¼ 578 (600-1¼)	
CIRCLING	1540-1 578 (600-1)		1600-1¾ 638 (700-1¾) 1600-2 638 (700-2)	
JIVEX FIX MINIMUMS (DUAL VOR RECEIVERS OR DME REQUIRED)				
S-LOC 13	1320-½ 358 (400-½)		1320-5/8 358 (400-5/8)	
CIRCLING	1400-1 438 (500-1) 1420-1 458 (500-1)		1600-1¾ 638 (700-1¾) 1600-2 638 (700-2)	



EC-1, 19 MAY 2022 to 16 JUN 2022

EC-1, 19 MAY 2022 to 16 JUN 2022

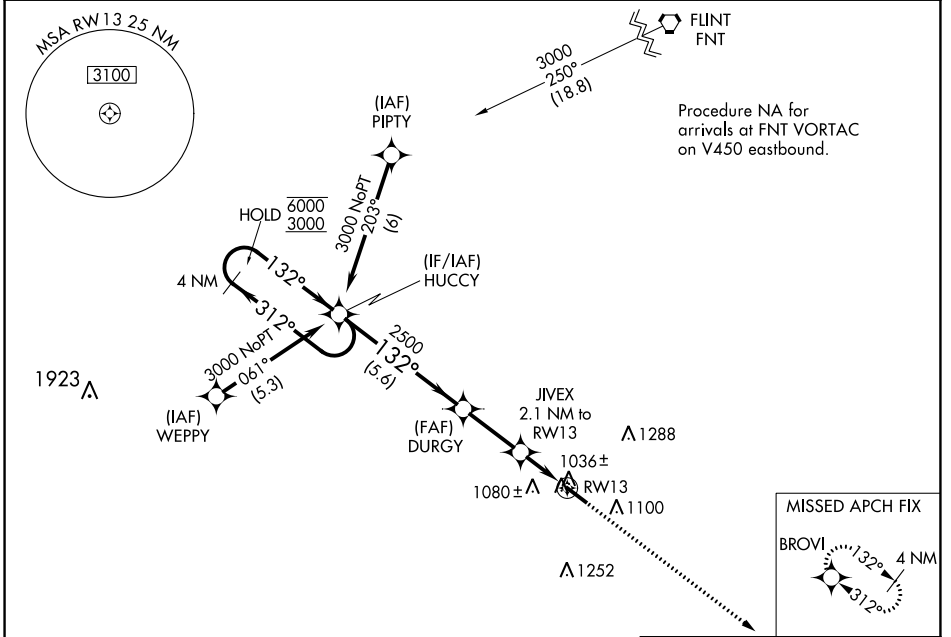
WAAS CH <b>69601</b> <b>W13A</b>	APP CRS <b>132°</b>	Rwy Idg <b>5002</b> TDZE <b>962</b> Apt Elev <b>962</b>
--	------------------------	---

# RNAV (GPS) RWY 13

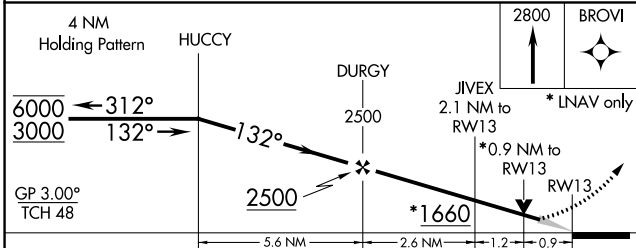
LIVINGSTON COUNTY SPENCER J HARDY (OZW)

RNP APCH.	MALS R	MISSED APPROACH: Climb to 2800 direct BROVI and hold.
<p>▼ For uncompensated Baro-VNAV systems, LNAV/VNAV NA below -16°C or above 37°C. For inop ALS, increase LNAV/VNAV all Cats visibility to ¼ SM.</p>		

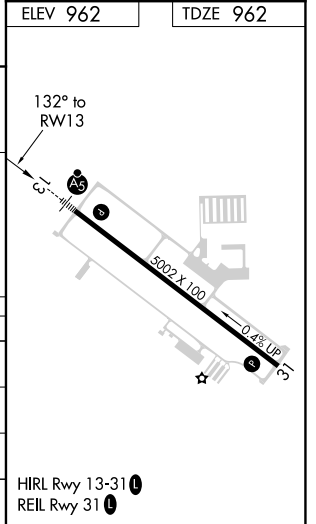
AWOS-3 <b>118.875</b>	DETROIT APP CON <b>132.35 284.0</b>	CLNC DEL <b>121.725 (GCO)</b>	UNICOM <b>123.0 (CTAF) 0</b>
--------------------------	--	----------------------------------	---------------------------------



ELEV 962	TDZE 962
----------	----------



CATEGORY	A	B	C	D
LPV DA		1162-½	200 (200-½)	
LNAV/VNAV DA		1212-½	250 (300-½)	
LNAV MDA		1300-½	338 (400-½)	
CIRCLING	1400-1 438 (500-1)	1420-1 458 (500-1)	1600-1¾ 638 (700-1¾)	1600-2 638 (700-2)



EC-1, 19 MAY 2022 to 16 JUN 2022

EC-1, 19 MAY 2022 to 16 JUN 2022

WAAS CH <b>99722</b> <b>W31A</b>	APP CRS <b>312°</b>	Rwy Idg <b>5002</b> TDZE <b>943</b> Apt Elev <b>962</b>
--	------------------------	---

# RNAV (GPS) RWY 31

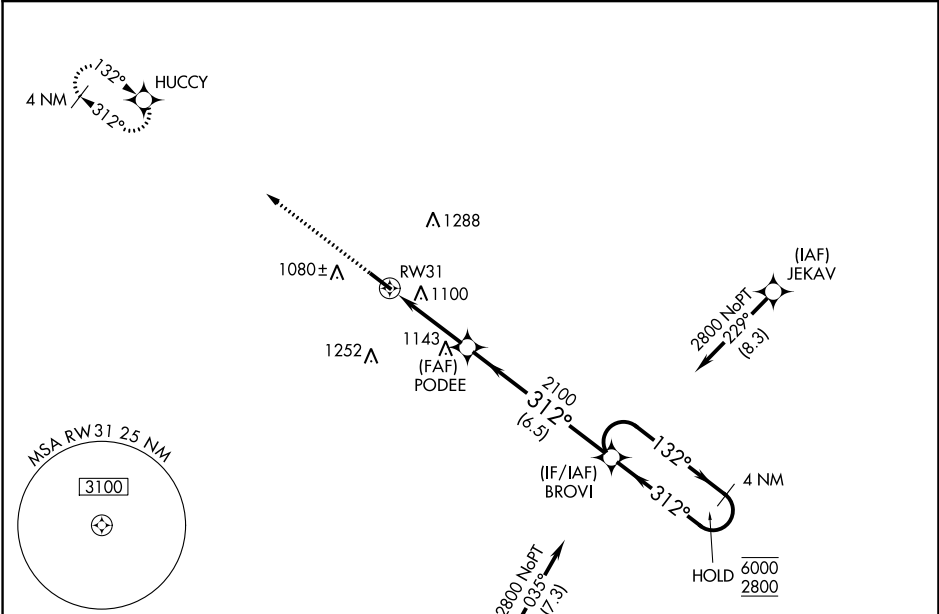
LIVINGSTON COUNTY SPENCER J HARDY (OZW)

RNP APCH.

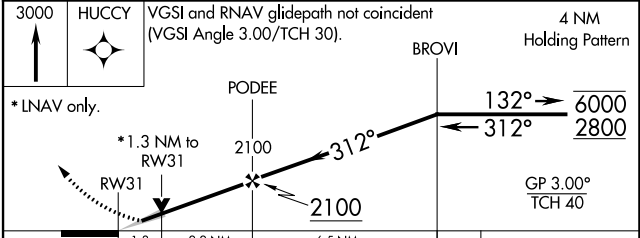
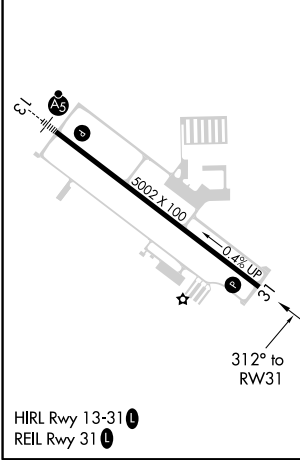
**⚠** For uncompensated Baro-VNAV systems, LNAV/VNAV NA below -16°C or above 54°C.

**MISSED APPROACH:**  
Climb to 3000 direct HUCCY and hold.

AWOS-3 <b>118.875</b>	DETROIT APP CON <b>132.35 284.0</b>	CLNC DEL <b>121.725 (GCO)</b>	UNICOM <b>123.0 (CTAF) 0</b>
--------------------------	--	----------------------------------	---------------------------------



ELEV 962	TDZE 943
----------	----------



CATEGORY	A	B	C	D
LPV DA	1143-3/4 200 (200-3/4)			
LNAV/VNAV DA	1410-1 1/2 467 (500-1 1/2)			
LNAV MDA	1400-1	457 (500-1)	1400-1 3/8	457 (500-1 3/8)
CIRCLING	1400-1 438 (500-1)	1420-1 458 (500-1)	1600-1 3/4 638 (700-1 3/4)	1600-2 638 (700-2)

EC-1, 19 MAY 2022 to 16 JUN 2022

EC-1, 19 MAY 2022 to 16 JUN 2022