

(MIXAE3.MIXAE) 12AUG21

MIXAE THREE DEPARTURE (RNAV)

WEST PALM BEACH, FLORIDA
PALM BEACH INTL (PBI)

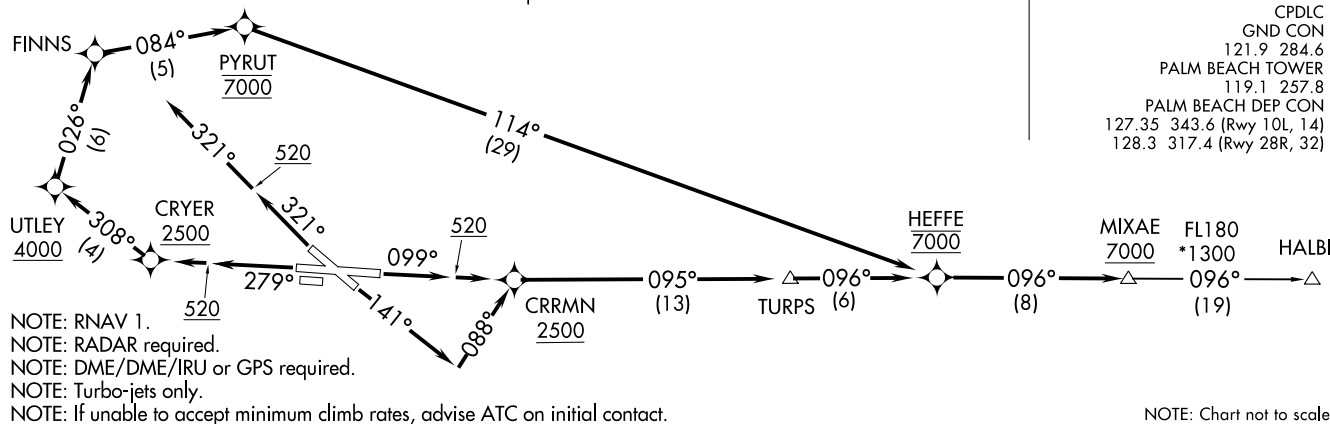
TOP ALTITUDE:
RWY 10L, 14, 28R: 7000
RWY 32: ASSIGNED BY ATC

TAKEOFF MINIMUMS:

Rwys 10L, 14, 28R, 32: Standard with minimum
 climb of 500' per NM to 520.



D-ATIS
 123.75
 CLNC DEL
 121.6 284.6
 CPDLC
 GND CON
 121.9 284.6
 PALM BEACH TOWER
 119.1 257.8
 PALM BEACH DEP CON
 127.35 343.6 (Rwy 10L, 14)
 128.3 317.4 (Rwy 28R, 32)



NOTE: Chart not to scale.

DEPARTURE ROUTE DESCRIPTION

TAKEOFF RUNWAY 10L: Climb on heading 099° to 520, then direct to cross CRRMN at or above 2500, then on track 095° to TURPS, then on track 096° to cross HEFFE at and maintain 7000, thence. . . .

TAKEOFF RUNWAY 14: Climb on heading 141° to intercept course 088° to cross CRRMN at or above 2500, then on track 095° to TURPS, then on track 096° to cross HEFFE at and maintain 7000, thence. . . .

TAKEOFF RUNWAY 28R: Climb on heading 279° to 520, then direct to cross CRYER at or above 2500, then on track 308° to cross UTLEY at or above 4000, then on track 026° to FINNS then on track 084° to cross PYRUT at 7000, then on track 114° to cross HEFFE at and maintain 7000, thence. . . .
 . . . on track 096° to cross MIXAE at or above 7000, then on transition. Expect clearance to filed altitude within 10 minutes after departure.

TAKEOFF RUNWAY 32: Climb on heading 321° to 520, then on heading 321° or assigned by ATC for vectors to cross HEFFE at 7000, thence. . . .

. . . on track 096° to cross MIXAE at or above 7000, then on transition. Maintain ATC assigned altitude, expect clearance to filed altitude within 10 minutes after departure.

HALBI TRANSITION (MIXAE3.HALBI)

(MIXAE3.MIXAE) 22195

AT-449 (FAA)

PALM BEACH INTL (PBI)
WEST PALM BEACH, FLORIDA

TOP ALTITUDE:
11000

RNAV 1 - DME/DME/IRU or GPS.

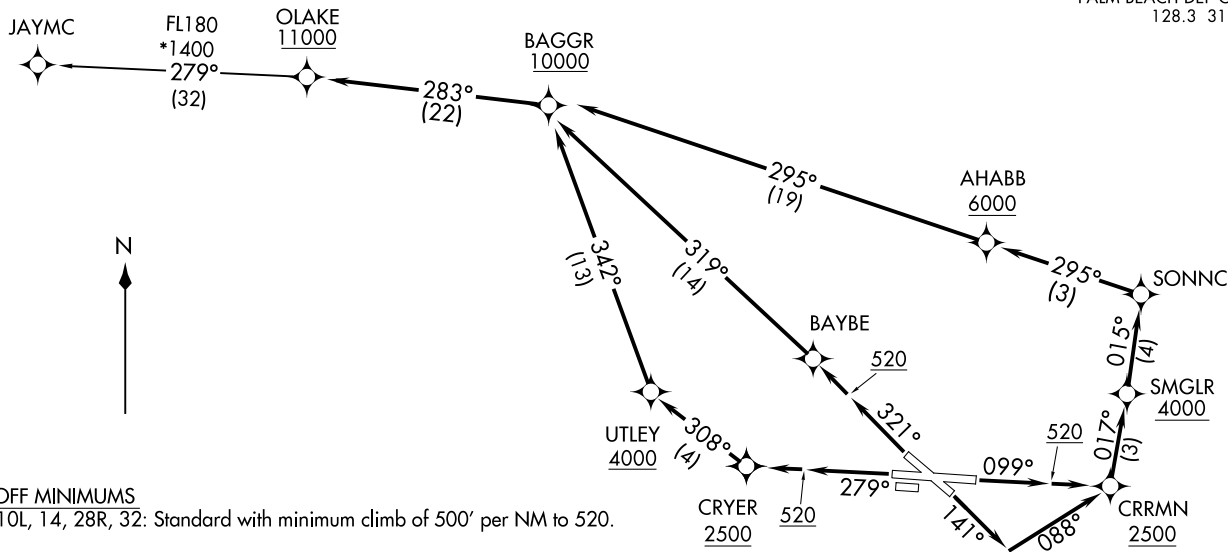
RADAR required for non-GPS equipped aircraft.

D-ATIS
123.75
CLNC DEL
121.6 284.6
CPDLC
GND CON
121.9 284.6
PALM BEACH TOWER
119.1 257.8
PALM BEACH DEP CON
128.3 317.4

(OLAKE2:OLAKE) 221°95
OLAKE TWO DEPARTURE (RNAV)

AL-449 (FAA)

PALM BEACH INTL (PBI)
WEST PALM BEACH, FLORIDA



OLAKE TWO DEPARTURE (RNAV)
(OLAKE2:OLAKE) 1°9N 172°22

WEST PALM BEACH, FLORIDA
PALM BEACH INTL (PBI)



DEPARTURE ROUTE DESCRIPTION

TAKEOFF RUNWAY 10L: Climb on heading 099° to 520, then direct CRRMN at or above 2500, then on track 017° to cross SMGLR at or above 4000, then on track 015° to SONNC, then on track 295° to cross AHABB at or above 6000, then on track 295° to cross BAGGR at or above 10000, thence ...

TAKEOFF RUNWAY 14: Climb on heading 141° to intercept course 088° to cross CRRMN at or above 2500, then on track 017° to cross SMGLR at or above 4000, then on track 015° to SONNC, then on track 295° to cross AHABB at or above 6000, then on track 295° to cross BAGGR at or above 10000, thence ...

TAKEOFF RUNWAY 28R: Climb on heading 279° to 520, then direct CRYER at or above 2500, then on track 308° to cross UTLEY at or above 4000, then on track 342° to cross BAGGR at or above 10000, thence ...

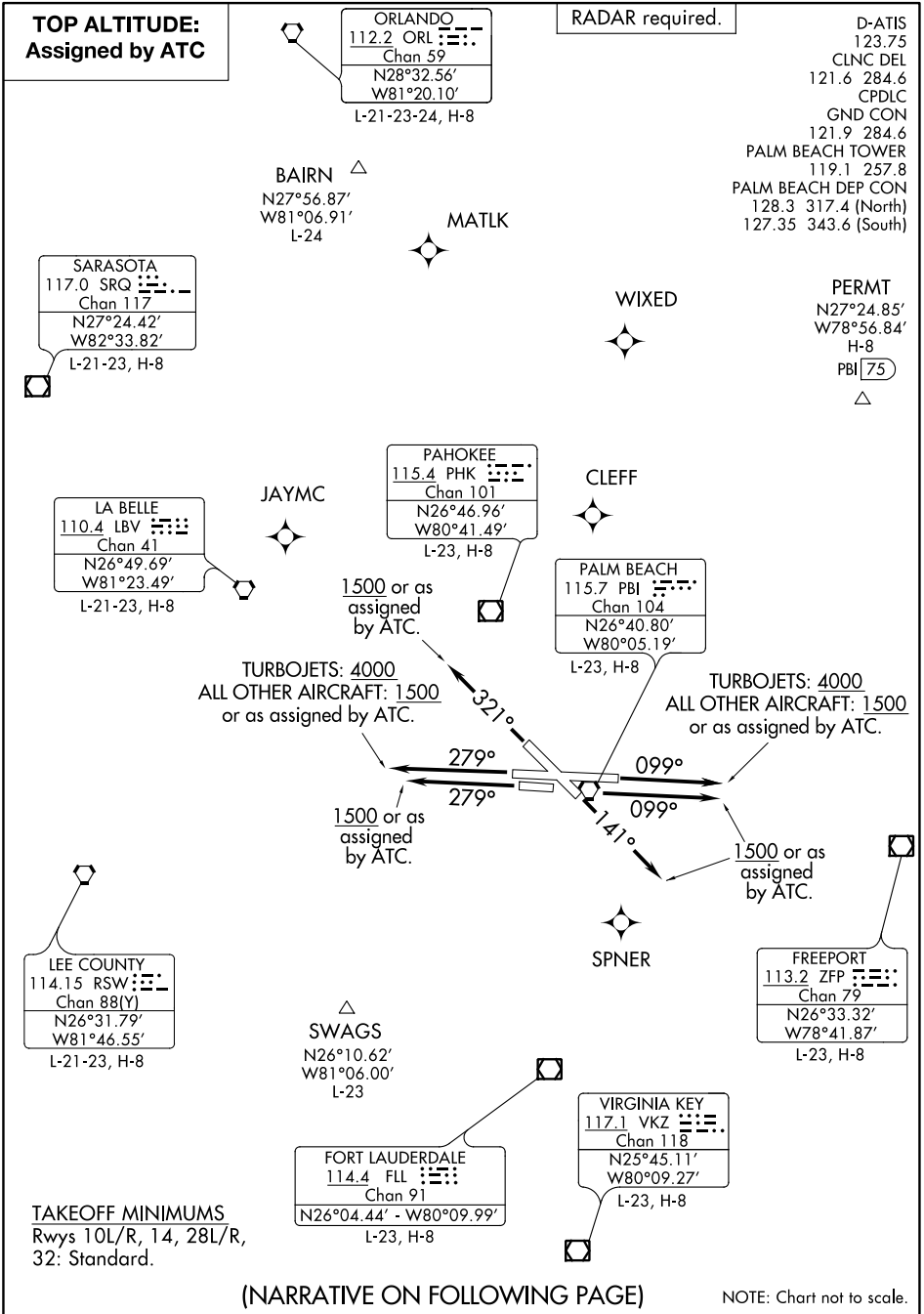
TAKEOFF RUNWAY 32: Climb on heading 321° to 520, then direct BAYBE, then on track 319° to cross BAGGR at or above 10000, thence ...

...on track 283° to cross OLAKE at or above 11000, then on transition.
Maintain 11000, expect filed altitude within 10 minutes after departure.

JAYMC TRANSITION (OLAKE2.JAYMC)

SE-3, 22 FEB 2024 to 21 MAR 2024

SE-3, 22 FEB 2024 to 21 MAR 2024





DEPARTURE ROUTE DESCRIPTION

TURBOJETS:
TAKEOFF RUNWAY 10L: Climb on heading 099° to 4000 or as assigned by ATC, thence...
TAKEOFF RUNWAY 14: Climb on heading 141° to 1500 or as assigned by ATC, thence...
TAKEOFF RUNWAY 28R: Climb on heading 279° to 4000 or as assigned by ATC, thence...
TAKEOFF RUNWAY 32: Climb on heading 321° to 1500 or as assigned by ATC, thence...

ALL OTHER AIRCRAFT:
TAKEOFF RUNWAY 10L/R: Climb on heading 099° to 1500 or as assigned by ATC, thence...
TAKEOFF RUNWAY 14: Climb on heading 141° to 1500 or as assigned by ATC, thence...
TAKEOFF RUNWAY 28L/R: Climb on heading 279° to 1500 or as assigned by ATC, thence...
TAKEOFF RUNWAY 32: Climb on heading 321° to 1500 or as assigned by ATC, thence...

...expect RADAR vectors to assigned/filed route. Maintain ATC assigned altitude. Expect further clearance to filed altitude 10 minutes after departure.

SE-3, 22 FEB 2024 to 21 MAR 2024

SE-3, 22 FEB 2024 to 21 MAR 2024

TOP ALTITUDE:
Rwy 10L, 14, 28R: 12000
Rwy 32: ASSIGNED BY ATC

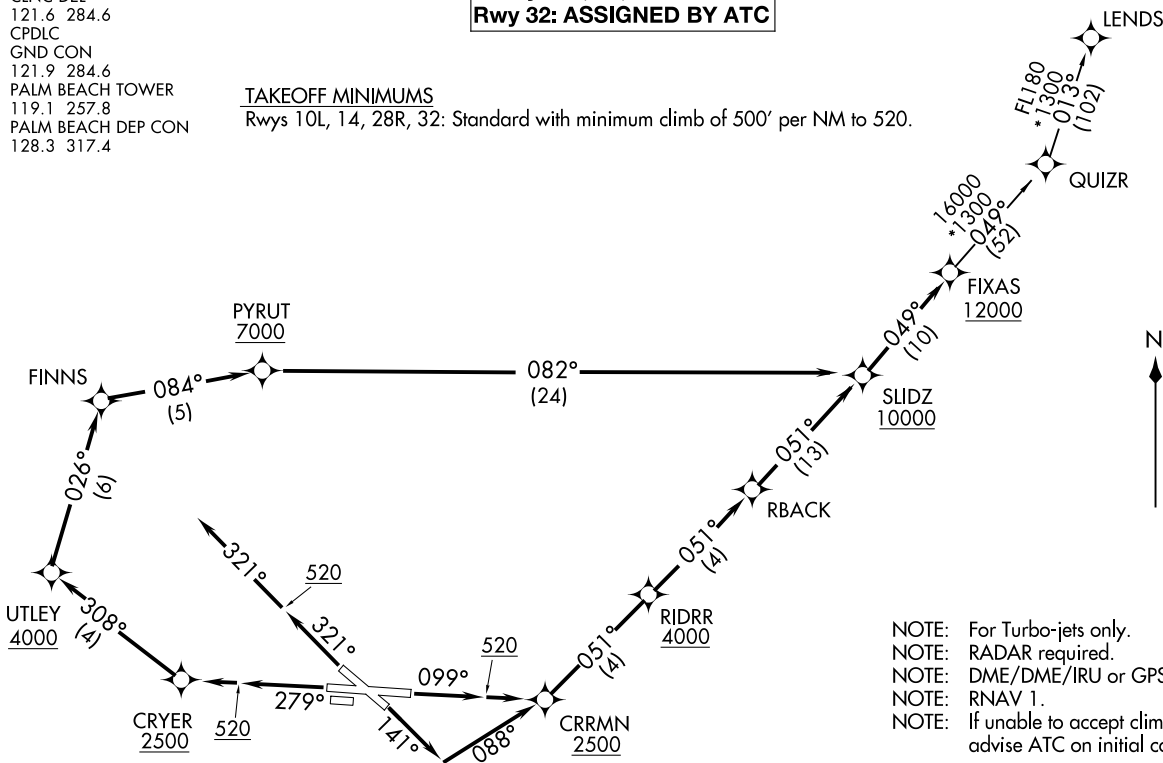
TAKEOFF MINIMUMS

Rwys 10L, 14, 28R, 32: Standard with minimum climb of 500' per NM to 520.

D-ATIS
 123.75
 CLNC DEL
 121.6 284.6
 CPDLC
 GND CON
 121.9 284.6
 PALM BEACH TOWER
 119.1 257.8
 PALM BEACH DEP CON
 128.3 317.4

SLIDZ TWO DEPARTURE (RNAV)
 (SLIDZ2.SLIDZ) 12AUG21

WEST PALM BEACH, FLORIDA
 PALM BEACH INTL (PBI)



NOTE: For Turbo-jets only.
 NOTE: RADAR required.
 NOTE: DME/DME/IRU or GPS required.
 NOTE: RNAV 1.
 NOTE: If unable to accept climb rates, advise ATC on initial contact.

(NARRATIVE ON FOLLOWING PAGE)

NOTE: Chart not to scale.

(SLIDZ2.SLIDZ) 22195
 SLIDZ TWO DEPARTURE (RNAV)

AL-449 (FAA)

PALM BEACH INTL (PBI)
 WEST PALM BEACH, FLORIDA

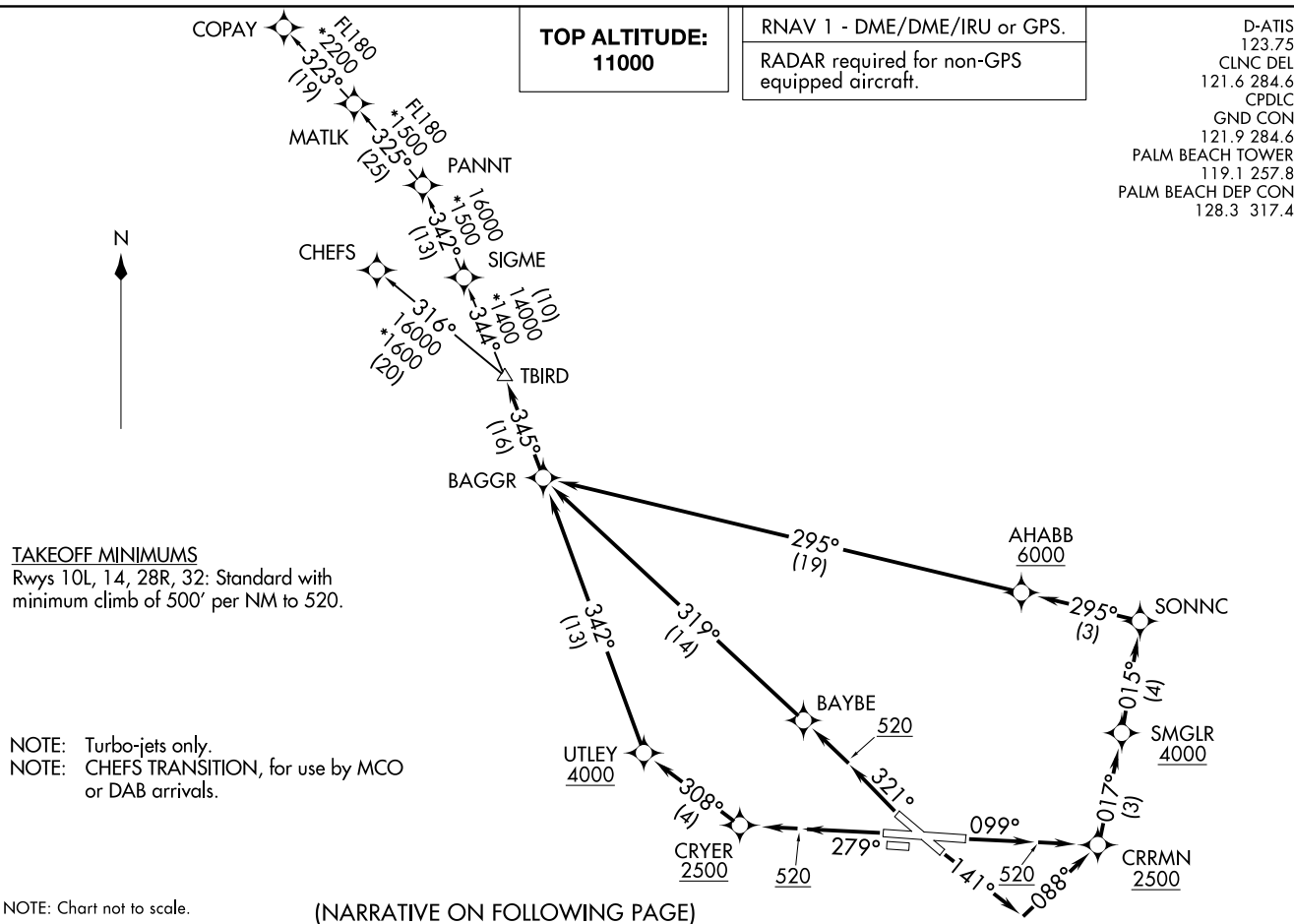
▼ DEPARTURE ROUTE DESCRIPTION	
<u>TAKEOFF RUNWAY 10L:</u> Climb on heading 099° to 520, then direct to cross CRRMN at or above 2500, then on track 051° to cross RIDRR at or above 4000, then on track 051° to RBACK, then on track 051° to cross SLIDZ at or above 10000, thence. . . .	
<u>TAKEOFF RUNWAY 14:</u> Climb on heading 141° to intercept course 088° to cross CRRMN at or above 2500, then on track 051° to cross RIDRR at or above 4000, then on track 051° to RBACK, then on track 051° to cross SLIDZ at or above 10000, thence. . . .	
<u>TAKEOFF RUNWAY 28R:</u> Climb on heading 279° to 520, then direct to cross CRYER at or above 2500, then on track 308° to cross UTLEY at or above 4000, then on track 026° to FINNS, then on track 084° to cross PYRUT at or above 7000, then on track 082° to cross SLIDZ at or above 10000, thence. . . .	
. . . .on track 049° to cross FIXAS at or above 12000, then on transition. Expect clearance to filed altitude within 10 minutes after departure.	
<u>TAKEOFF RUNWAY 32:</u> Climb on heading 321° to 520, then on heading 321° or as assigned by ATC, for vectors to SLIDZ at or above 10000, thence. . . .	
. . . .on track 049° to cross FIXAS at or above 12000, then on transition. Maintain ATC assigned altitude, expect clearance to filed altitude within 10 minutes after departure.	
<u>LENDZ TRANSITION (SLIDZ2.LENDZ)</u>	

SE-3, 22 FEB 2024 to 21 MAR 2024

SE-3, 22 FEB 2024 to 21 MAR 2024

TBIRD FIVE DEPARTURE (RNAV)
(TBIRD5.TBIRD) 19MAY22

WEST PALM BEACH, FLORIDA
PALM BEACH INTL (PBI)



(TBIRD5.TBIRD) 22195
AL-449 (FAA)

PALM BEACH INTL (PBI)
WEST PALM BEACH, FLORIDA



DEPARTURE ROUTE DESCRIPTION

TAKEOFF RUNWAY 10L: Climb on heading 099° to 520, then direct to cross CRRMN at or above 2500, then on track 017° to cross SMGLR at or above 4000, then on track 015° to SONNC, then on track 295° to cross AHABB at or above 6000, then on track 295° to BAGGR, thence. . . .

TAKEOFF RUNWAY 14: Climb on heading 141° to intercept course 088° to cross CRRMN at or above 2500, then on track 017° to cross SMGLR at or above 4000, then on track 015° to SONNC, then on track 295° to cross AHABB at or above 6000, then on track 295° to BAGGR, thence. . . .

TAKEOFF RUNWAY 28R: Climb on heading 279° to 520, then direct CRYER at or above 2500, then on track 308° to cross UTLEY at or above 4000, then on track 342° to BAGGR, thence. . . .

TAKEOFF RUNWAY 32: Climb on heading 321° to 520, then direct BAYBE, then on track 319° to BAGGR, thence. . . .

. . . .on track 345° to TBIRD, then on assigned transition, maintain 11000, expect filed altitude 10 minutes after departure.

- CHEFS TRANSITION (TBIRD5.CHEFS)
- COPAY TRANSITION (TBIRD5.COPAY)
- MATLK TRANSITION (TBIRD5.MATLK)

WELLY THREE DEPARTURE (RNAV)
(WELLY3.WELLY) 20APR23

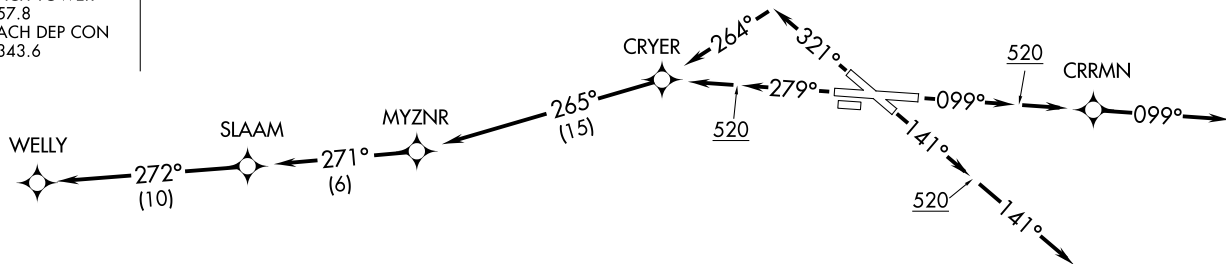
WEST PALM BEACH, FLORIDA
PALM BEACH INTL (PBI)

D-ATIS
123.75
CLNC DEL
121.6 284.6
CPDLC
GND CON
121.9 284.6
PALM BEACH TOWER
119.1 257.8
PALM BEACH DEP CON
127.35 343.6



TOP ALTITUDE:
RWY 10L/28R: 4000
RWY 14/32: 1500

RNAV 1-DME/DME/IRU or GPS.
RADAR required.



TAKEOFF MINIMUMS

Rwy 10L, 14, 28R: Standard.

Rwy 32: Standard with minimum climb of 500 feet per NM to 520.

NOTE: Jet aircraft only.

NOTE: Chart not to scale.

(WELLY3.WELLY) 23110
WELLY THREE DEPARTURE (RNAV)

AL-449 (FAA)

PALM BEACH INTL (PBI)
WEST PALM BEACH, FLORIDA

DEPARTURE ROUTE DESCRIPTION

TAKEOFF RUNWAY 10L: Climb on heading 099° to 520, then direct CRRMN, then on heading 099° or as assigned by ATC, for vectors to SLAAM, thence . . .

TAKEOFF RUNWAY 14: Climb on heading 141° to 520, then on heading 141° or as assigned by ATC, for vectors to SLAAM, thence . . .

TAKEOFF RUNWAY 28R: Climb on heading 279° to 520, then direct CRYER, then on depicted route to SLAAM, thence . . .

TAKEOFF RUNWAY 32: Climb on heading 321° to intercept course 264° to CRYER, then on depicted route to SLAAM, thence . . .

. . . on track 272° to WELLY. Rwys 10L/28R maintain 4000. Rwys 14/32 maintain 1500. Expect filed altitude within 10 minutes after departure.