

PIKEVILLE, KENTUCKY

AL-9449 (FAA)

23278

LOC/DME I-PBX <b>109.7</b> Chan <b>34</b>	APP CRS <b>274°</b>	Rwy Idg <b>4650</b> TDZE <b>1463</b> Apt Elev <b>1470</b>
---	------------------------	---

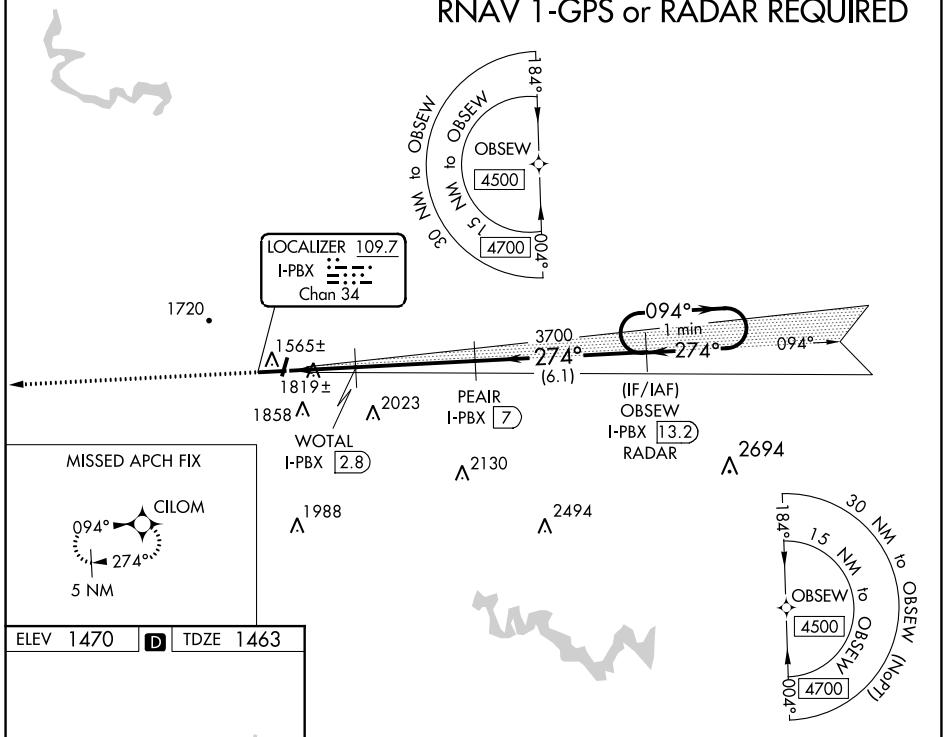
# ILS or LOC RWY 27

PIKE COUNTY/HATCHER FLD (P.BX)

<b>▼</b> <b>▲</b> NA	DME and RNAV 1-GPS required. Circling NA to Rwy's 2 and 20.	MISSED APPROACH: Climb to 4500 direct CILOM and hold.
-------------------------	--	--

AWOS-3PT <b>121.225</b>	INDIANAPOLIS CENTER <b>126.575 257.85</b>	UNICOM <b>122.8</b> (CTAF) <b>0</b>
----------------------------	--	--

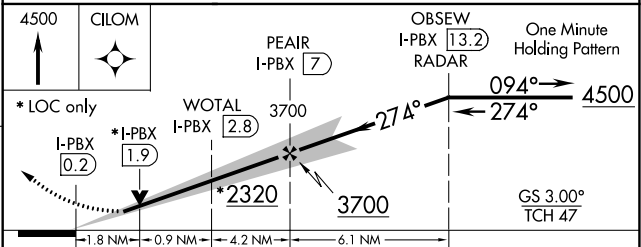
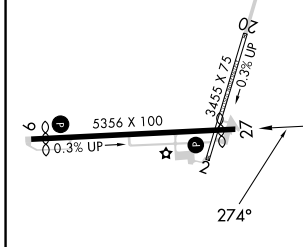
## RNAV 1-GPS or RADAR REQUIRED



SE-1, 22 FEB 2024 to 21 MAR 2024

SE-1, 22 FEB 2024 to 21 MAR 2024

ELEV <b>1470</b>	<b>D</b>	TDZE <b>1463</b>
------------------	----------	------------------



CATEGORY	A	B	C	D
S-ILS 27	1663-1 200 (200-1)			
S-LOC 27	2080-1	617 (700-1)	2080-1 $\frac{3}{4}$	617 (700-1 $\frac{3}{4}$ )
<b>C</b> CIRCLING	2120-1 650 (700-1)	2160-1 690 (700-1)	2160-2 690 (700-2)	2460-3 990 (1000-3)

PIKEVILLE, KENTUCKY  
Amdt 2 17AUG17

37°34'N-82°34'W

# ILS or LOC RWY 27

PIKE COUNTY/HATCHER FLD (P.BX)

WAAS CH <b>86540</b> <b>W27A</b>	APP CRS <b>274°</b>	Rwy Ldg TDZE <b>1463</b> Apt Elev <b>1470</b>
--	------------------------	---

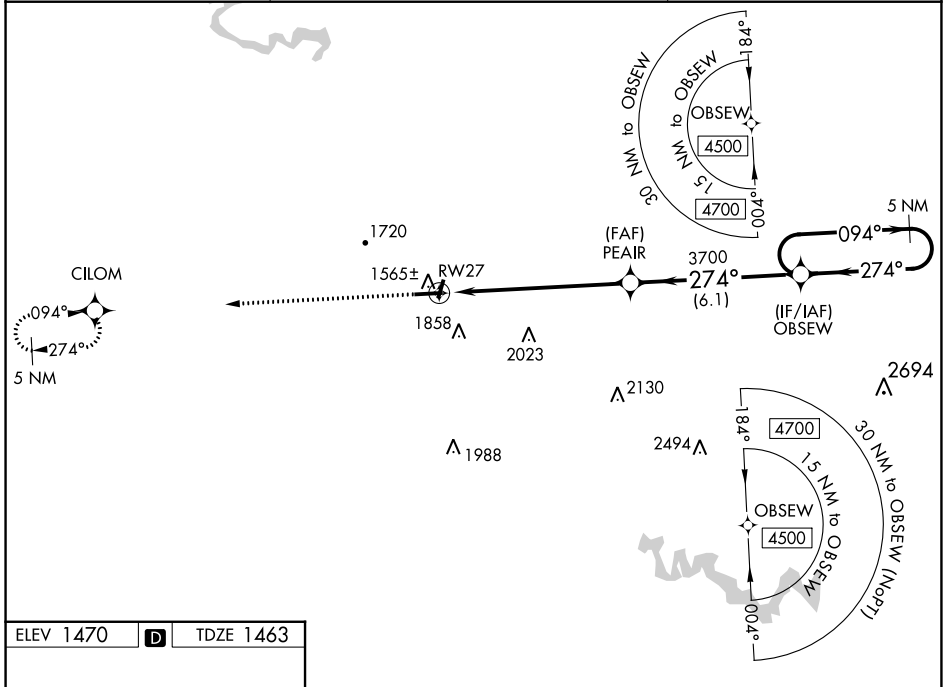
# RNAV (GPS) RWY 27

PIKE COUNTY/HATCHER FLD (P.B.X)

**⚠** For uncompensated Baro-VNAV systems, LNAV/VNAV NA below -17°C (0°F) or above 54°C (130°F). DME/DME RNP-0.3 NA. Circling NA to Rwys 2 and 20.

MISSED APPROACH: Climb to 4500 direct CILOM and hold.

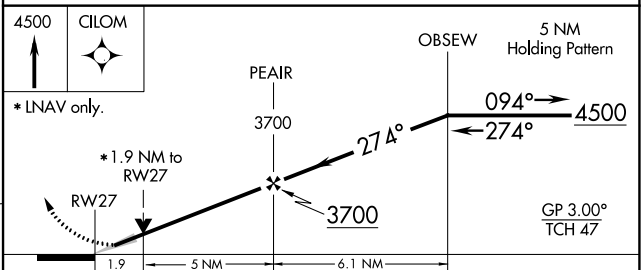
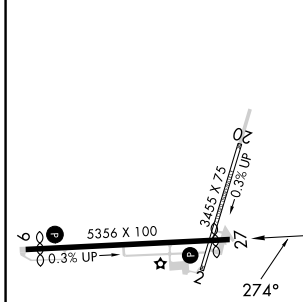
AWOS-3PT <b>121.225</b>	INDIANAPOLIS CENTER <b>126.575 257.85</b>	UNICOM <b>122.8 (CTAF) 0</b>
----------------------------	--	---------------------------------



SE-1, 22 FEB 2024 to 21 MAR 2024

SE-1, 22 FEB 2024 to 21 MAR 2024

ELEV 1470	<b>D</b>	TDZE 1463
-----------	----------	-----------



CATEGORY	A	B	C	D
LPV DA	1663-1 200 (200-1)			
LNAV/VNAV DA	2175-2 1/2 712 (800-2 1/2)			
LNAV MDA	2120-1	657 (700-1)	2120-1 3/4	657 (700-1 3/4)
<b>C</b> CIRCLING	2120-1 650 (700-1)	2160-1 690 (700-1)	2160-2 690 (700-2)	2460-3 990 (1000-3)

WAAS CH <b>61240</b> <b>W09A</b>	APP CRS <b>094°</b>	Rwy Idg TDZE Apt Elev	<b>4650</b> <b>1459</b> <b>1470</b>
--	------------------------	-----------------------------	---

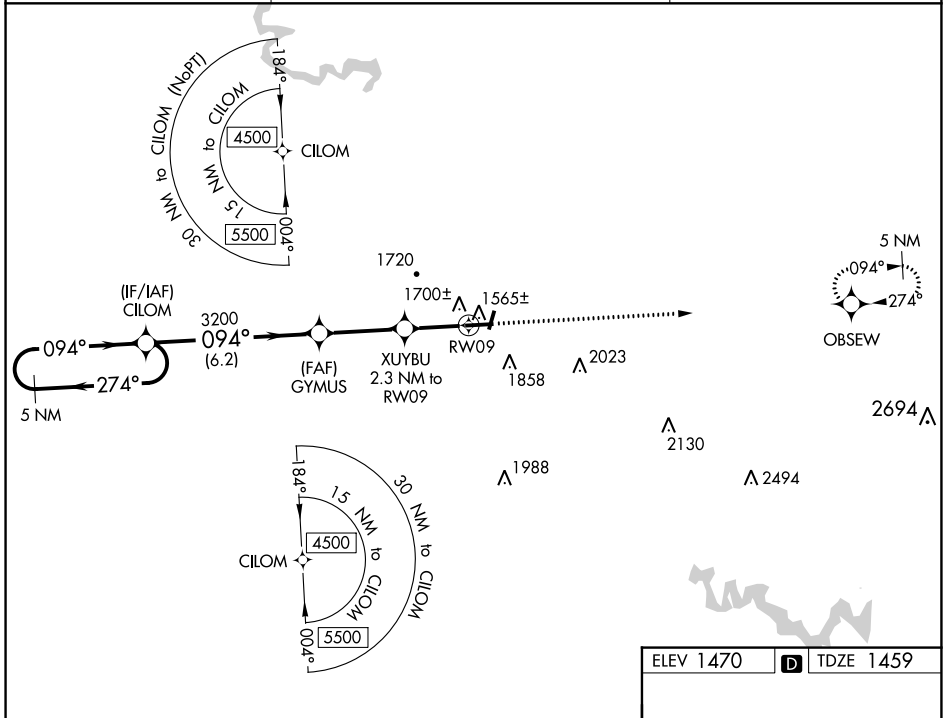
# RNAV (GPS) RWY 9

PIKE COUNTY/HATCHER FLD (P.B.X)

**⚠** For uncompensated Baro-VNAV systems, LNAV/VNAV NA below -17°C (0°F) or above 54°C (130°F). DME/DME RNP-0.3 NA. Rwy 9 helicopter visibility reduction below ¾ SM NA. Circling NA to Rws 2 and 20.

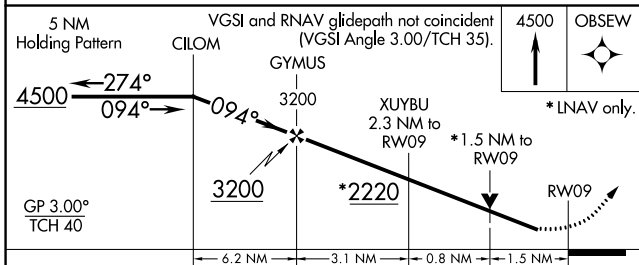
MISSED APPROACH: Climb to 4500 direct OBSEW and hold.

AWOS-3PT <b>121.225</b>	INDIANAPOLIS CENTER <b>126.575 257.85</b>	UNICOM <b>122.8 (CTAF)</b> <b>📶</b>
----------------------------	--	--



SE-1, 22 FEB 2024 to 21 MAR 2024

SE-1, 22 FEB 2024 to 21 MAR 2024



ELEV 1470	<b>D</b> TDZE 1459
-----------	--------------------

CATEGORY	A	B	C	D
LPV DA		1709-1	250 (300-1)	
LNAV/VNAV DA		1891-1½	432 (500-1½)	
LNAV MDA	1960-1	501 (500-1)	1960-1⅓	501 (500-1⅓)
<b>C</b> CIRCLING	2120-1 650 (700-1)	2160-1 690 (700-1)	2160-2 690 (700-2)	2460-3 990 (1000-3)

