

HELNS SIX ARRIVAL

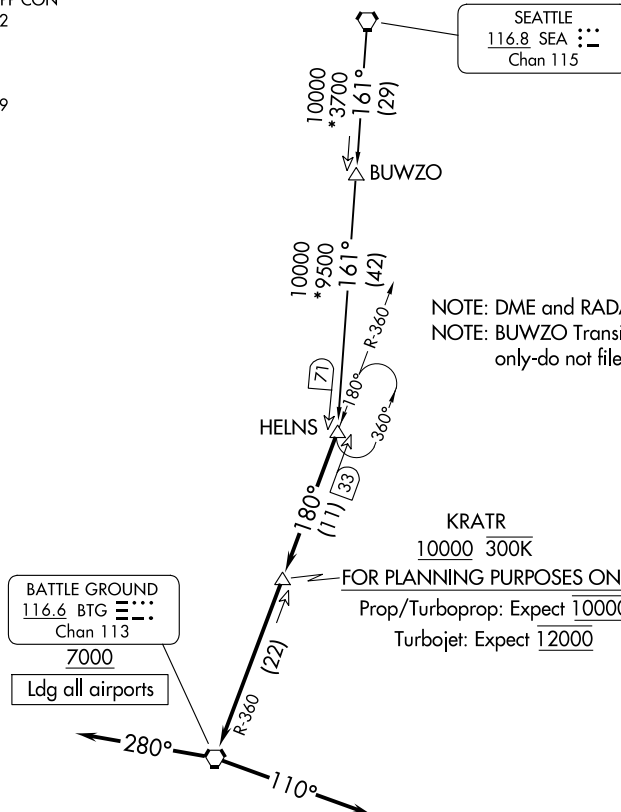
AL-330 (FAA)

PORTLAND, OREGON

PORTLAND APP CON
124.35 299.2
HIO ATIS
127.65
PDX D-ATIS
128.35 269.9

SEATTLE
116.8 SEA
Chan 115

NW-1, 22 FEB 2024 to 21 MAR 2024



NOTE: DME and RADAR required.
NOTE: BUWZO Transition ATC assigned
only-do not file.

FOR PLANNING PURPOSES ONLY:
Prop/Turboprop: Expect 10000
Turbojet: Expect 12000



NOTE: Chart not to scale.

NW-1, 22 FEB 2024 to 21 MAR 2024

ARRIVAL ROUTE DESCRIPTION

BUWZO TRANSITION (BUWZO.HELNS6): From over BUWZO via SEA R-161 to HELNS. Thence. . .

SEATTLE TRANSITION (SEA.HELNS6): From over SEA VORTAC via SEA R-161 to HELNS. Thence. . .

. . . from over HELNS on BTG VORTAC R-360 to cross KRATR at or above 10000, then as depicted to cross BTG VORTAC at or above 7000.

LANDING EAST: From BTG VORTAC heading 280°, expect RADAR vectors to final approach course.

LANDING WEST: From BTG VORTAC heading 110°, expect RADAR vectors to final approach course.

HELNS SIX ARRIVAL

PORTLAND, OREGON

HHOOD FOUR ARRIVAL (RNAV) Transition Routes
(HHOOD.HHOOD4) 07DEC17

HHOOD.HHOOD4) 17341
HHOOD FOUR ARRIVAL (RNAV) Transition Routes
AL-330 (FAA)

PORTLAND INTL (PDX)
PORTLAND, OREGON

PORTLAND, OREGON
PORTLAND INTL (PDX)

D-ATIS
128.35 269.9
PORTLAND APP CON
124.35 299.2
PORTLAND TOWER
118.7 257.8 (Rwy 10L-28R)
123.775 251.125 (Rwys 3-21, 10R-28L)
GND CON
121.9 348.6

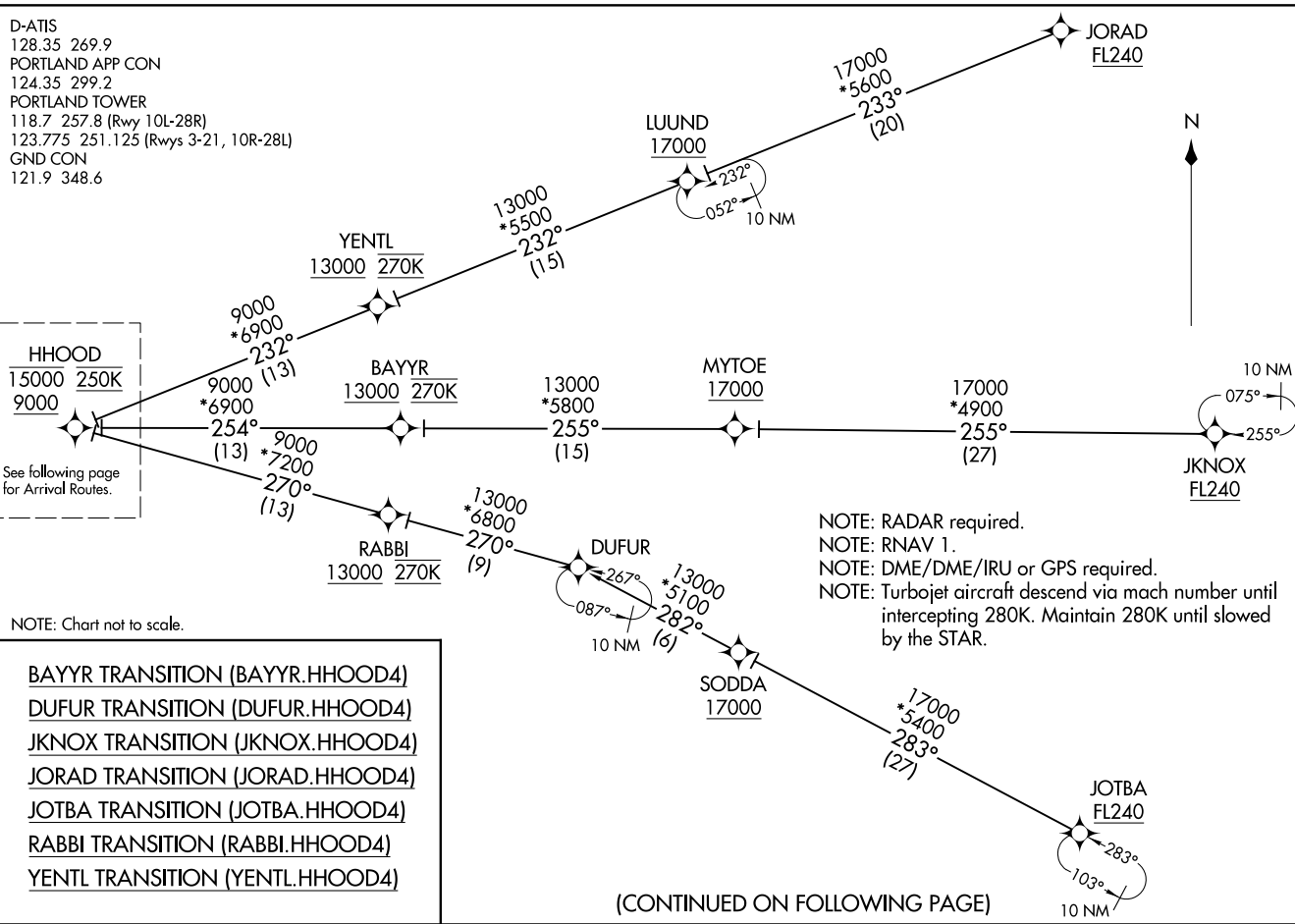
HHOOD
15000 250K
9000

See following page for Arrival Routes.

NOTE: Chart not to scale.

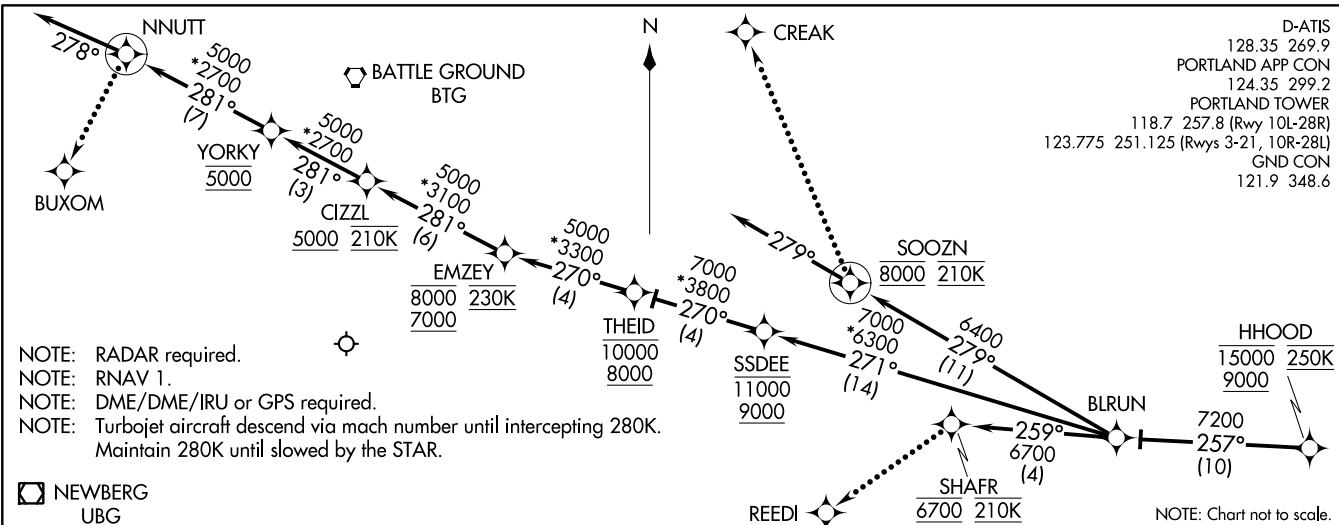
- BAYYR TRANSITION (BAYYR.HHOOD4)
- DUFUR TRANSITION (DUFUR.HHOOD4)
- JKNOX TRANSITION (JKNOX.HHOOD4)
- JORAD TRANSITION (JORAD.HHOOD4)
- JOTBA TRANSITION (JOTBA.HHOOD4)
- RABBI TRANSITION (RABBI.HHOOD4)
- YENTL TRANSITION (YENTL.HHOOD4)

(CONTINUED ON FOLLOWING PAGE)



HHOOD FOUR ARRIVAL (RNAV) Arrival Routes
(HHOOD.HHOOD4) 07DEC17

PORTLAND, OREGON
PORTLAND INTL (PDX)



(HHOOD.HHOOD4) 18200
HHOOD FOUR ARRIVAL (RNAV) Arrival Routes
AL-330 (FAA)

PORTLAND INTL (PDX)
PORTLAND, OREGON

ARRIVAL ROUTE DESCRIPTION

From HHOOD on track 257° to BLRUN, thence . . .

LANDING RUNWAYS 10L/R: From BLRUN on track 271° to cross SSDEE between 9000 and 11000, then on track 270° to cross THEID between 8000 and 10000, then on track 270° to cross EMZEY between 7000 and 8000 and at 230K, then on track 281° to cross CIZZL at or above 5000 and at 210K, then on track 281° to cross YORKY at 5000, then on track 281° to NNUTT, then on track 278°. Expect RADAR vectors to final approach course.

LANDING RUNWAY 21: From BLRUN on track 279° to cross SOOZN at 8000 and at 210K, then on track 279°. Expect RADAR vectors to final approach course.

LANDING RUNWAYS 28L/R: From BLRUN on track 259° to cross SHAFR at 6700 and at 210K. Expect RNAV (RNP)/ILS/VISUAL approach as assigned by ATC.

LOST COMMUNICATIONS

LANDING RUNWAY 10: At NNUTT, turn left direct to BUXOM and execute ILS RWY 10L approach.

LANDING RUNWAY 21: At SOOZN turn right direct to CREAK and execute LOC/DME RWY 21 approach.

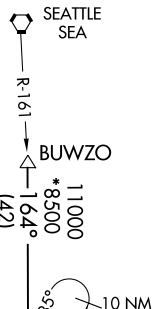
LANDING RUNWAY 28: At SHAFR, turn left direct to REEDI and execute ILS RWY 28R approach.

KRATR TWO ARRIVAL (RNAV)

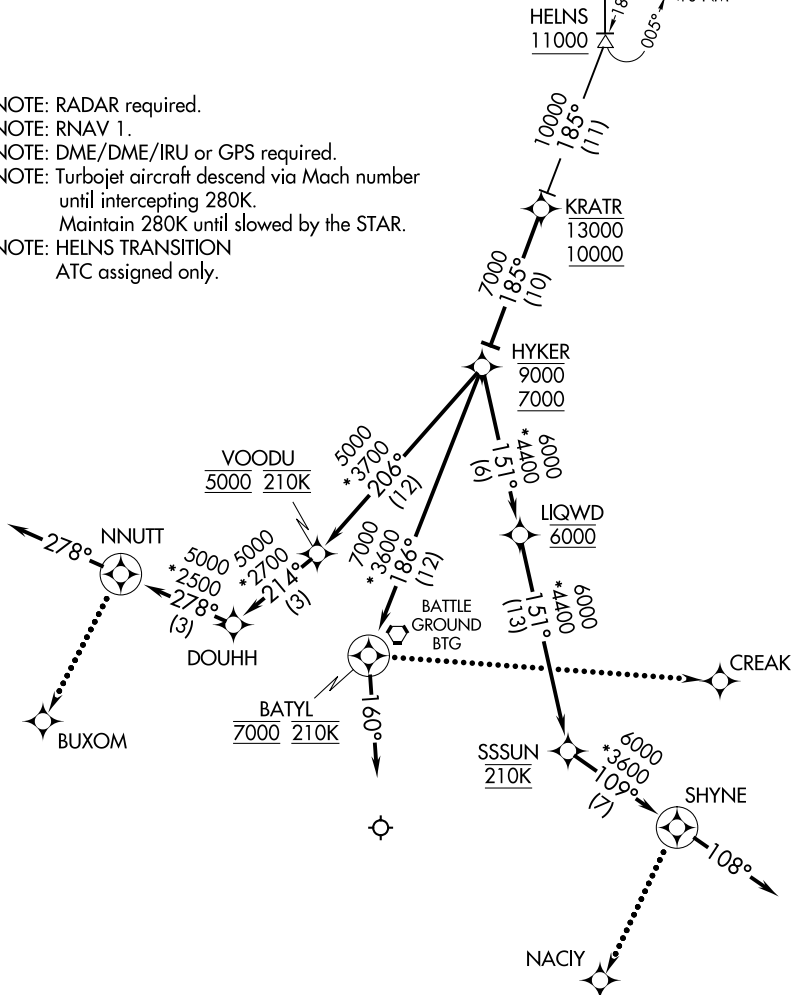
AL-330 (FAA)

PORTLAND, OREGON

D-ATIS
 128.35 269.9
 PORTLAND APP CON
 124.35 299.2
 PORTLAND TOWER
 118.7 257.8 (Rwy 10L-28R)
 123.775 251.125 (Rwys 3-21, 10R-28L)
 GND CON
 121.9 348.6



- NOTE: RADAR required.
- NOTE: RNAV 1.
- NOTE: DME/DME/IRU or GPS required.
- NOTE: Turbojet aircraft descend via Mach number until intercepting 280K.
- NOTE: Maintain 280K until slowed by the STAR.
- NOTE: HELNS TRANSITION ATC assigned only.



NW-1, 22 FEB 2024 to 21 MAR 2024

NW-1, 22 FEB 2024 to 21 MAR 2024

(NARRATIVE ON FOLLOWING PAGE)

NOTE: Chart not to scale.

KRATR TWO ARRIVAL (RNAV)

(KRATR.KRATR2) 25JUN15

PORTLAND, OREGON

PORTLAND INTL (PDX)

ARRIVAL ROUTE DESCRIPTION

BUWZO TRANSITION (BUWZO.KRATR2)

HELNS TRANSITION (HELNS.KRATR2):

From KRATR on track 185° to cross HYKER between 7000 and 9000. Thence. . . .

LANDING RUNWAYS 10L/R: From HYKER on track 206° to cross VOODU at 5000 and at 210K, then on track 214° to DOUHH, then on track 278° to NNUTT, then on track 278°. Expect RADAR vectors to final approach course.

LANDING RUNWAY 21: From HYKER on track 186° to cross BATYL at 7000 and at 210K, then on track 160°. Expect RADAR vectors to final approach course.

LANDING RUNWAYS 28L/R: From HYKER on track 151° to cross LIQWD at 6000, then on track 151° to cross SSSUN at 210K, then on track 109° to SHYNE, then on track 108°. Expect RADAR vectors to final approach course.

LOST COMMUNICATIONS:

LANDING RUNWAYS 10L/R: At NNUTT, turn left direct to BUXOM and execute ILS RWY 10L approach.

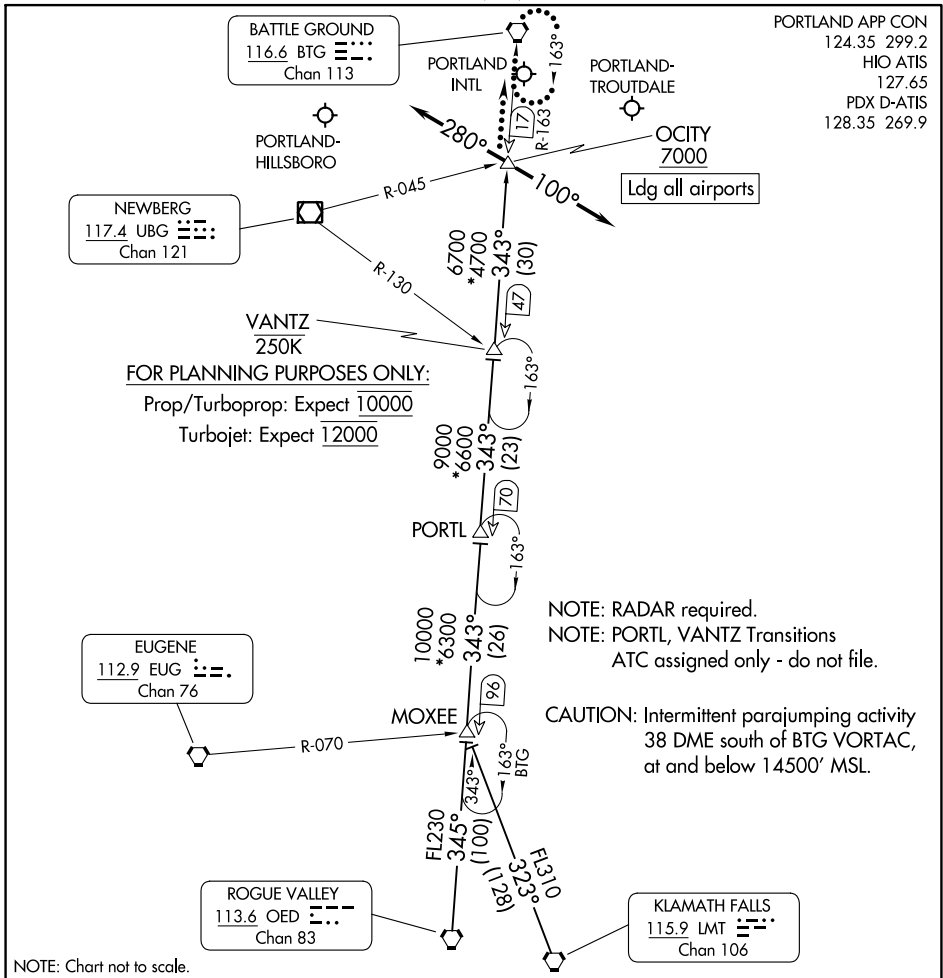
LANDING RUNWAY 21: At BATYL turn left direct to CREAK and execute LOC/DME RWY 21 approach.

LANDING RUNWAYS 28L/R: At SHYNE, turn right direct to NACIY and execute ILS RWY 28R approach.

NW-1, 22 FEB 2024 to 21 MAR 2024

NW-1, 22 FEB 2024 to 21 MAR 2024

OCITY THREE ARRIVAL



NOTE: Chart not to scale.

ARRIVAL ROUTE DESCRIPTION

- KLAMATH FALLS TRANSITION (LMT.OCITY3):** From over LMT VORTAC on LMT R-323 to MOXEE, then on BTG R-163 to OCITY. Thence. . .
- MOXEE TRANSITION (MOXEE.OCITY3):** From over MOXEE on BTG R-163 to OCITY. Thence. . .
- ROGUE VALLEY TRANSITION (OED.OCITY3):** From over OED VORTAC on OED R-345 to MOXEE, then on BTG R-163 to OCITY. Thence. . .
- PORTL TRANSITION (PORTL.OCITY3):** From over PORTL on BTG R -163 to OCITY. Thence. . .
- VANTZ TRANSITION (VANTZ.OCITY3):** From over VANTZ on BTG R-163 to OCITY. Thence. . .
- LANDING EAST:** From OCITY heading 280°, expect RADAR vectors to final approach course.
- LANDING WEST:** From OCITY heading 100°, expect RADAR vectors to final approach course.
- LOST COMMUNICATIONS:** After OCITY, proceed direct BTG VORTAC and hold.

OCITY THREE ARRIVAL

NW-1, 22 FEB 2024 to 21 MAR 2024

NW-1, 22 FEB 2024 to 21 MAR 2024

(TMBRS.TMBRS2) 17173

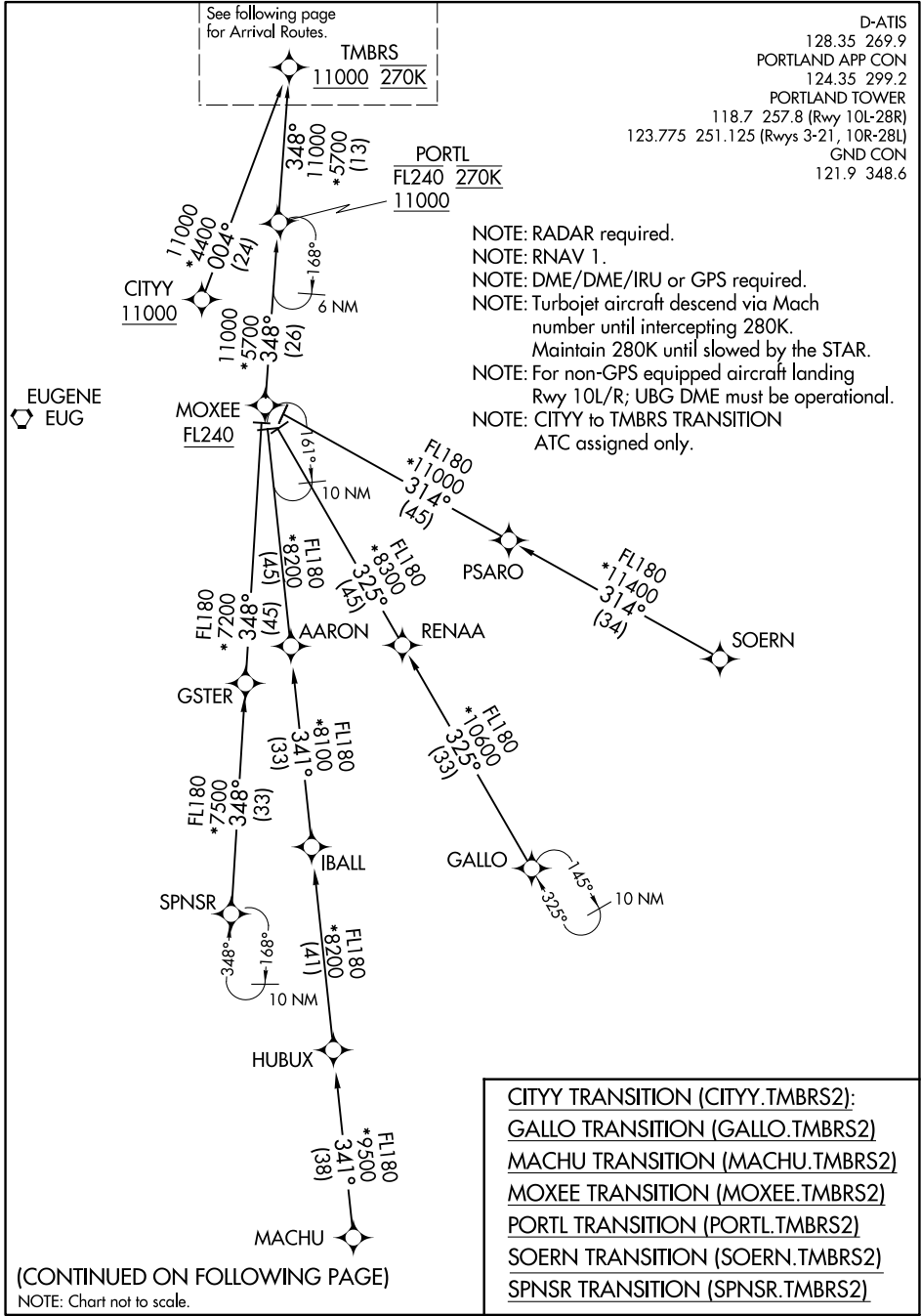
TMBRS TWO ARRIVAL (RNAV) Transition Routes

AL-330 (FAA)

PORTLAND INTL (PDX)
PORTLAND, OREGON

See following page
for Arrival Routes.

D-ATIS
128.35 269.9
PORTLAND APP CON
124.35 299.2
PORTLAND TOWER
118.7 257.8 (Rwy 10L-28R)
123.775 251.125 (Rwys 3-21, 10R-28L)
GND CON
121.9 348.6



NOTE: RADAR required.
 NOTE: RNAV 1.
 NOTE: DME/DME/IRU or GPS required.
 NOTE: Turbojet aircraft descend via Mach number until intercepting 280K. Maintain 280K until slowed by the STAR.
 NOTE: For non-GPS equipped aircraft landing Rwy 10L/R; UBG DME must be operational.
 NOTE: CITYY to TMBRS TRANSITION ATC assigned only.

NW-1, 22 FEB 2024 to 21 MAR 2024

NW-1, 22 FEB 2024 to 21 MAR 2024

TMBRS TWO ARRIVAL (RNAV) Transition Routes

(TMBRS.TMBRS2) 25JUN15

PORTLAND, OREGON
PORTLAND INTL (PDX)

(TMBRS.TMBRS2) 19115

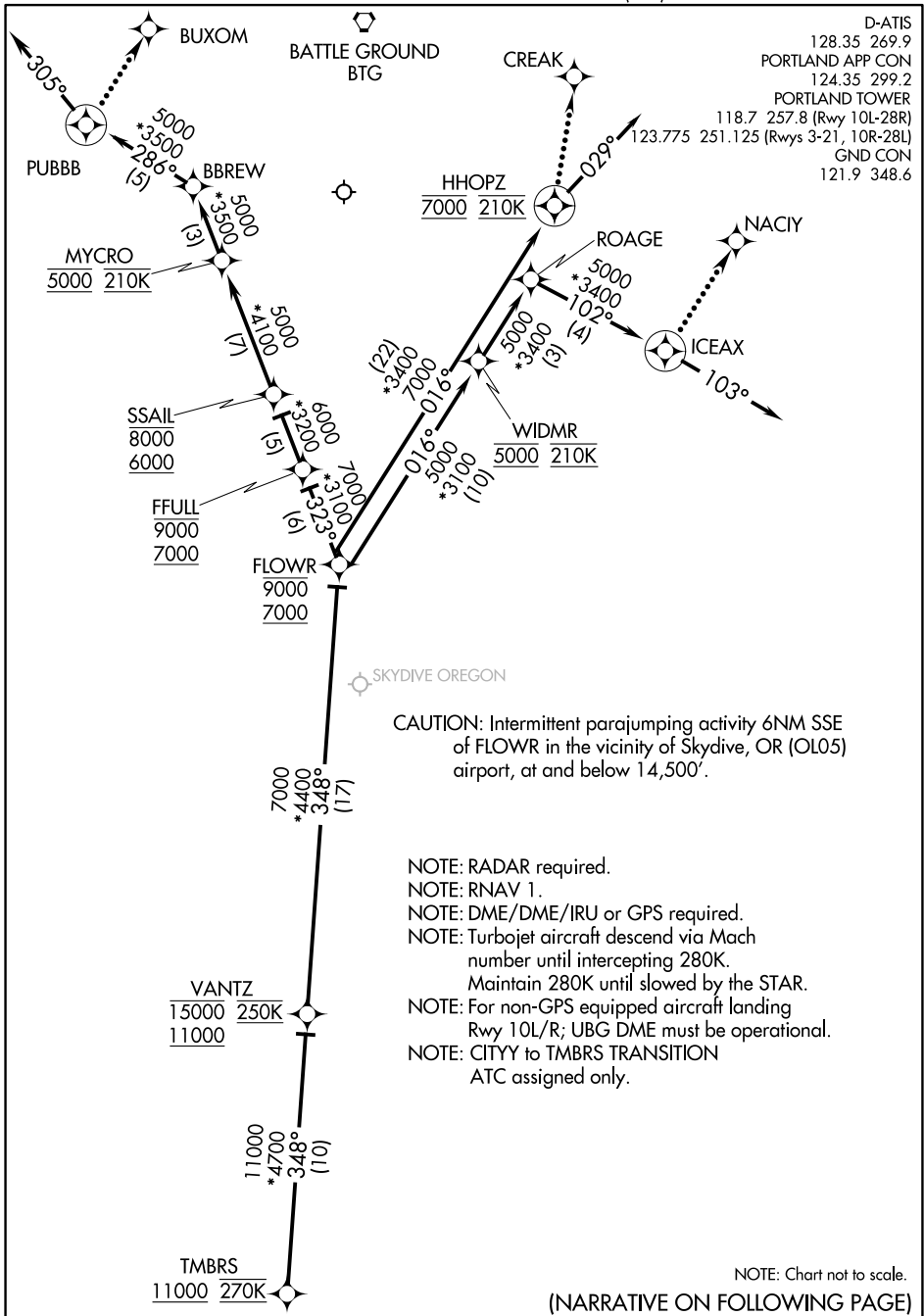
TMBRS TWO ARRIVAL (RNAV) Arrival Routes

AL-330 (FAA)

PORTLAND INTL (PDX)

PORTLAND, OREGON

D-ATIS
 128.35 269.9
 PORTLAND APP CON
 124.35 299.2
 PORTLAND TOWER
 118.7 257.8 (Rwy 10L-28R)
 123.775 251.125 (Rwys 3-21, 10R-28L)
 GND CON
 121.9 348.6



NW-1, 22 FEB 2024 to 21 MAR 2024

NW-1, 22 FEB 2024 to 21 MAR 2024

TMBRS TWO ARRIVAL (RNAV) Arrival Routes

(TMBRS.TMBRS2) 25JUN15

PORTLAND, OREGON
PORTLAND INTL (PDX)

ARRIVAL ROUTE DESCRIPTION

From TMBRS on track 348° to cross VANTZ between 11000 and 15000 and at 250K, then on track 348° to cross FLOWR between 7000 and 9000. Thence . . .

LANDING RUNWAYS 10L/R: From FLOWR on track 323° to cross FFULL between 7000 and 9000, then on track 323° to cross SSAIL between 6000 and 8000, then on track 323° to cross MYCRO at 5000 and at 210K, then on track 323° to BBREW, then on track 286° to PUBBB, then on track 305°. Expect RADAR vectors to final approach course.

LANDING RUNWAY 21: From FLOWR on track 016° to cross HHOPZ at 7000 and at 210K, then on track 029°. Expect RADAR vectors to final approach course.

LANDING RUNWAYS 28L/R: From FLOWR on track 016° to cross WIDMR at 5000 and at 210K, then on track 016° to ROAGE, then on track 102° to cross ICEAX, then on track 103°. Expect RADAR vectors to final approach course.

LOST COMMUNICATIONS:

LANDING RUNWAY 10: At PUBBB, turn right direct to BUXOM and execute ILS RWY 10L approach.

LANDING RUNWAY 21: At HHOPZ turn left direct to CREAK and execute LOC/DME RWY 21 approach.

LANDING RUNWAY 28: At ICEAX, turn left direct to NACIY and execute ILS RWY 28R approach.

NW-1, 22 FEB 2024 to 21 MAR 2024

NW-1, 22 FEB 2024 to 21 MAR 2024