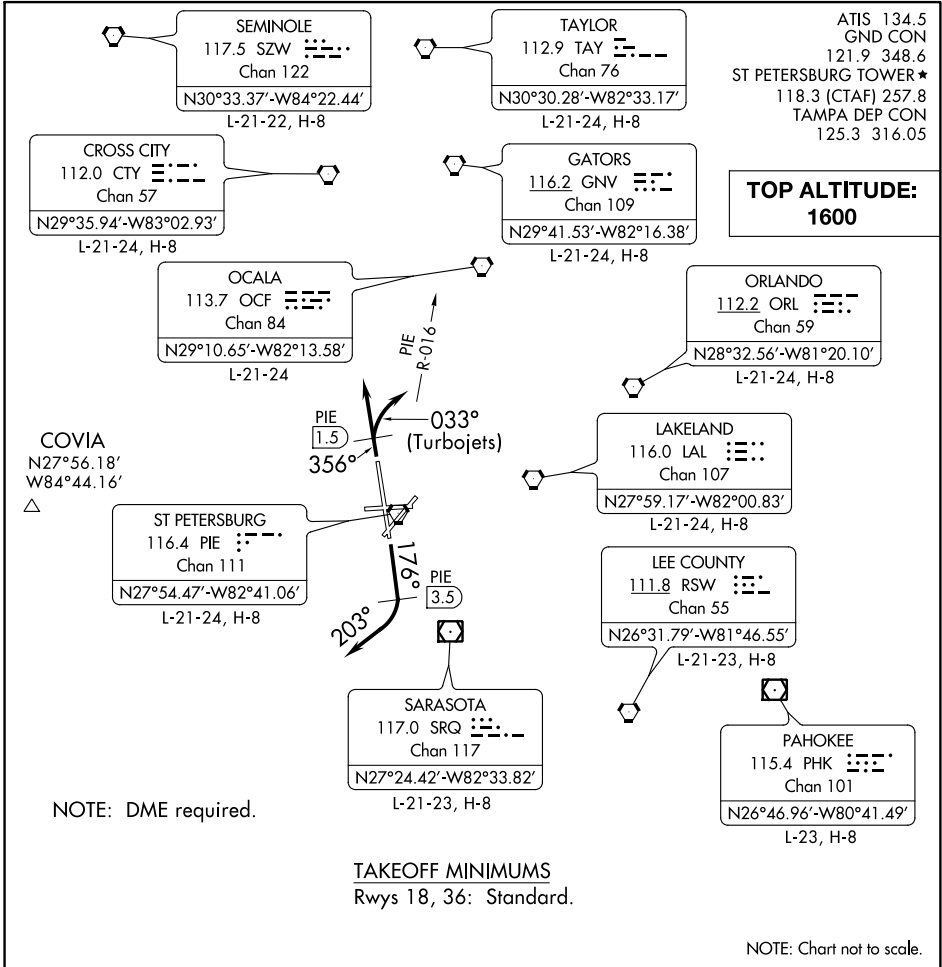


(PIE9.PIE) 19171

AL-625 (FAA)

ST. PETE-CLEARWATER INTL (PIE)  
ST PETERSBURG-CLEARWATER, FLORIDA

# ST PETE NINE DEPARTURE



SE-3. 30 JAN 2020 to 27 FEB 2020

SE-3. 30 JAN 2020 to 27 FEB 2020

**DEPARTURE ROUTE DESCRIPTION**

**TAKEOFF RWY 18:** Climb heading 176° until PIE VORTAC 3.5 DME, then turn right heading 203° or as assigned for RADAR vectors to filed/assigned route, thence. . .

**TAKEOFF RWY 36: TURBOJETS** climb heading 356° until PIE VORTAC 1.5 DME, then turn right heading 033° to intercept and fly outbound on PIE R-016, thence. . .

**ALL OTHERS** fly heading 356° or as assigned for RADAR vectors to filed/assigned route. Thence. . .

. . . maintain 1600, expect further clearance to filed altitude 10 minutes after departure.

**ST PETE NINE DEPARTURE**  
(PIE9.PIE) 29MAR18

ST PETERSBURG-CLEARWATER, FLORIDA  
ST. PETE-CLEARWATER INTL (PIE)