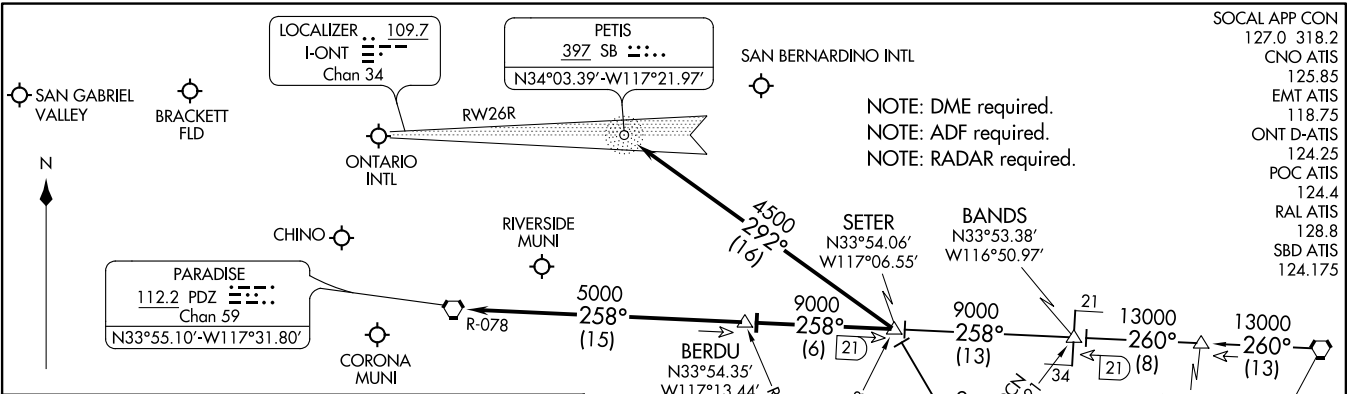


SETER FIVE ARRIVAL
(SETER:SETER5) 17AUG17

(SETER:SETER5) 21112
SETER FIVE ARRIVAL



ARRIVAL ROUTE DESCRIPTION

JULIAN TRANSITION (JLI:SETER5): From over JLI VORTAC on JLI R-315 to SETER. Thence. . . .

PALM SPRINGS TRANSITION (PSP:SETER5): From over PSP VORTAC on PSP R-260 to BANDS, then on PDZ R-078 to SETER. Thence. . . .

LANDING ONTARIO INTL

RUNWAYS 26L/R: From over SETER on SB NDB 292° course to SB NDB; expect ILS approach.

RUNWAYS 8L/R: From over SETER on PDZ R-078 to BERDU, then on PDZ R-078 to PDZ VORTAC; expect vectors to final approach course.

ALL OTHER AIRPORTS

From over SETER via PDZ R-078 to BERDU, then on PDZ R-078 to PDZ VORTAC; expect vectors to final approach course.

VERTICAL NAVIGATION PLANNING INFORMATION

Expect 12000

VERTICAL NAVIGATION PLANNING INFORMATION

Expect 16000

VERTICAL NAVIGATION PLANNING INFORMATION

Expect FL240

NOTE: Chart not to scale.

AL-965 (FAA)

ONTARIO, CALIFORNIA

ONTARIO, CALIFORNIA

ARRIVAL ROUTE DESCRIPTION

HECTOR TRANSITION (HEC.ZIGGY7): From over HEC VORTAC on HEC R-211 and PDZ R-030 to ZIGGY. Thence

PALMDALE TRANSITION (PMD.ZIGGY7): From over PMD VORTAC on PMD R-104 to HITOP, then on HDF R-332 to ZIGGY. Thence

SHAFTER TRANSITION (EHF.ZIGGY7): From over EHF VORTAC on EHF R-128 and PMD R-295 to PMD VORTAC, then on PMD R-104 to HITOP, then on HDF R-332 to ZIGGY. Thence

TULE TRANSITION (TTE.ZIGGY7): From over TTE VOR/DME on TTE R-147 and PMD R-295 to PMD VORTAC, then on PMD R-104 to HITOP, then on HDF R-332 to ZIGGY. Thence

LANDING ONTARIO INTL

RUNWAYS 8L/R: From over ZIGGY on PDZ R-030 to PDZ VORTAC; expect RADAR vectors to final approach course.

RUNWAYS 26 L/R: From over ZIGGY direct PETIS NDB or on PDZ R-030 to PETIS; expect RADAR vectors for ILS approach.

ALL OTHER AIRPORTS

From over ZIGGY on PDZ R-030 to PDZ VORTAC; expect RADAR vectors to final approach course.

SW-3, 20 MAY 2021 to 17 JUN 2021

SW-3, 20 MAY 2021 to 17 JUN 2021