

WAAS CH 40238 W27A	APP CRS 273°	Rwy Idg 3641 TDZE 708 Apt Elev 708
--	------------------------	--

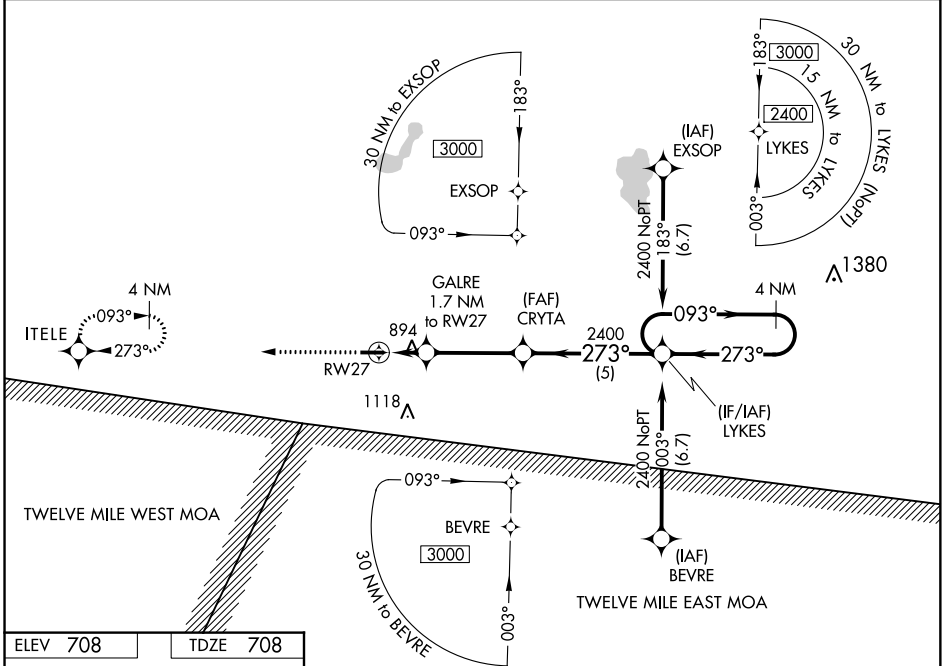
RNAV (GPS) RWY 27

ARENS FIELD (RWN)

NA Baro-VNAV NA. Use Knox altimeter setting; when not received, use Rochester altimeter setting and increase all DA/MDA 20 feet and LNAV/VNAV all Cals visibility 1/8 mile. DME/DME RNP-0.3 NA. Helicopter visibility reduction below 3/4 SM NA.

MISSED APPROACH: Climb to 2400 direct ITELE hold.

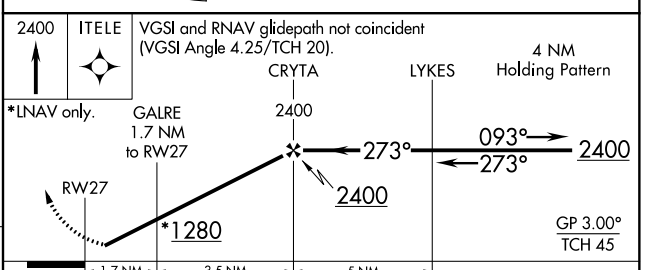
OXI AWOS-3 135.775	SOUTH BEND APP CON * 132.05 257.8	UNICOM 122.8 (CTAF) 0
------------------------------	---	---------------------------------



EC-2, 27 FEB 2020 to 26 MAR 2020

EC-2, 27 FEB 2020 to 26 MAR 2020

ELEV 708	TDZE 708
----------	----------



CATEGORY	A	B	C	D
LPV DA	995-1		287 (300-1)	NA
LNAV/VNAV DA	1224-1 ³ / ₄		516 (600-1 ³ / ₄)	NA
LNAV MDA	1200-1	492 (500-1)	1200-1 ³ / ₈ 492 (500-1 ³ / ₈)	NA
C CIRCLING	1240-1	532 (600-1)	1480-2 ¹ / ₄ 772 (800-2 ¹ / ₄)	NA

WAAS CH 42638 W09A	APP CRS 093°	Rwy Idg 4201 TDZE 708 Apt Elev 708
--	------------------------	--

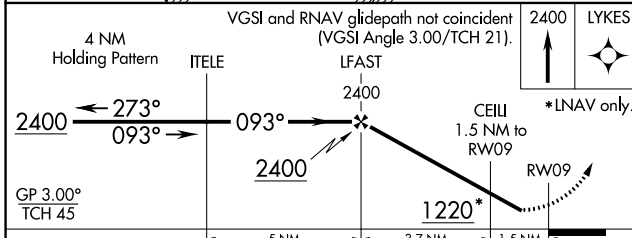
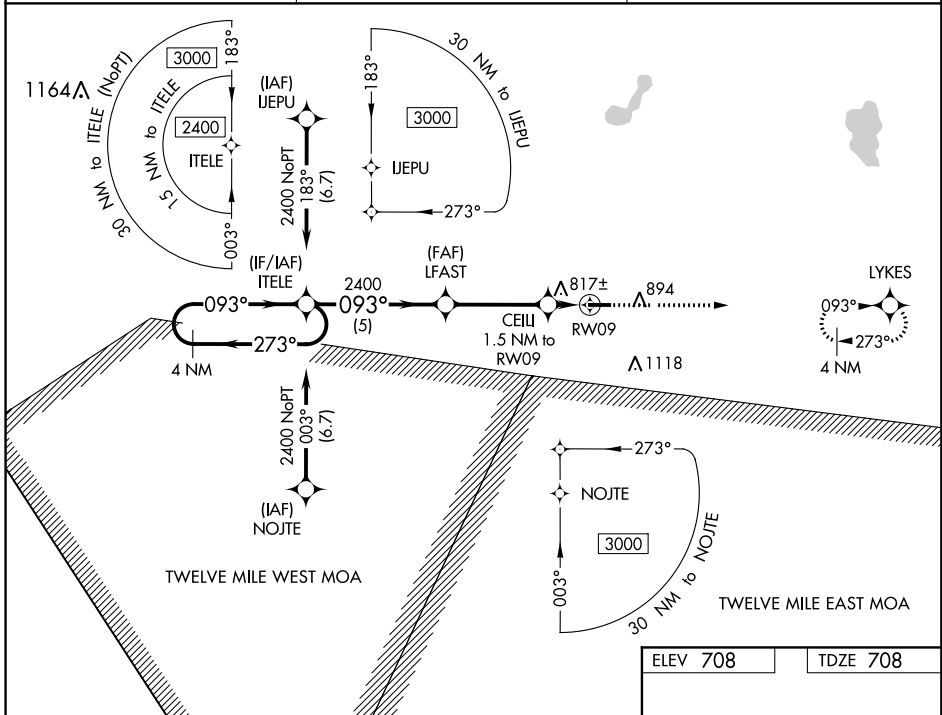
RNAV (GPS) RWY 9

ARENS FIELD (RWN)

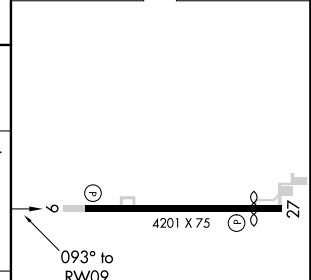
Baro-VNAV NA. Use Knox altimeter setting; when not received, use Rochester altimeter setting and increase all DA/MDA 20 feet and LNAV Cat C visibility 1/8 mile.
NA DME/DME RNP-0.3 NA. Helicopter visibility reduction below 3/4 SM NA.

MISSED APPROACH: Climb to 2400 direct LYKES and hold.

OXI AWOS-3 135.775	SOUTH BEND APP CON * 132.05 257.8	UNICOM 122.8 (CTAF)
------------------------------	---	-------------------------------



ELEV 708	TDZE 708
----------	----------



CATEGORY	A	B	C	D
LPV DA	995-1 287 (300-1)			NA
LNAV/VNAV DA	1132-1½ 424 (500-1½)			NA
LNAV MDA	1120-1 412 (500-1)		1120-1⅛ 412 (500-1⅛)	NA
C CIRCLING	1240-1 532 (600-1)		1480-2¼ 772 (800-2¼)	NA

LIRL Rwy 9-27 **1**
REIL Rws 9 and 27 **1**

EC-2, 27 FEB 2020 to 26 MAR 2020

EC-2, 27 FEB 2020 to 26 MAR 2020

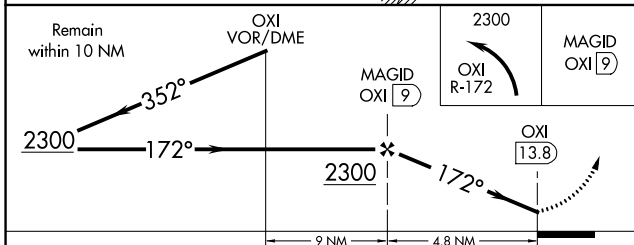
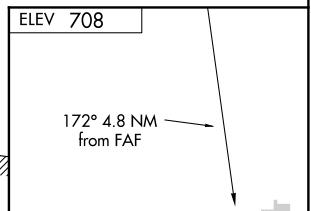
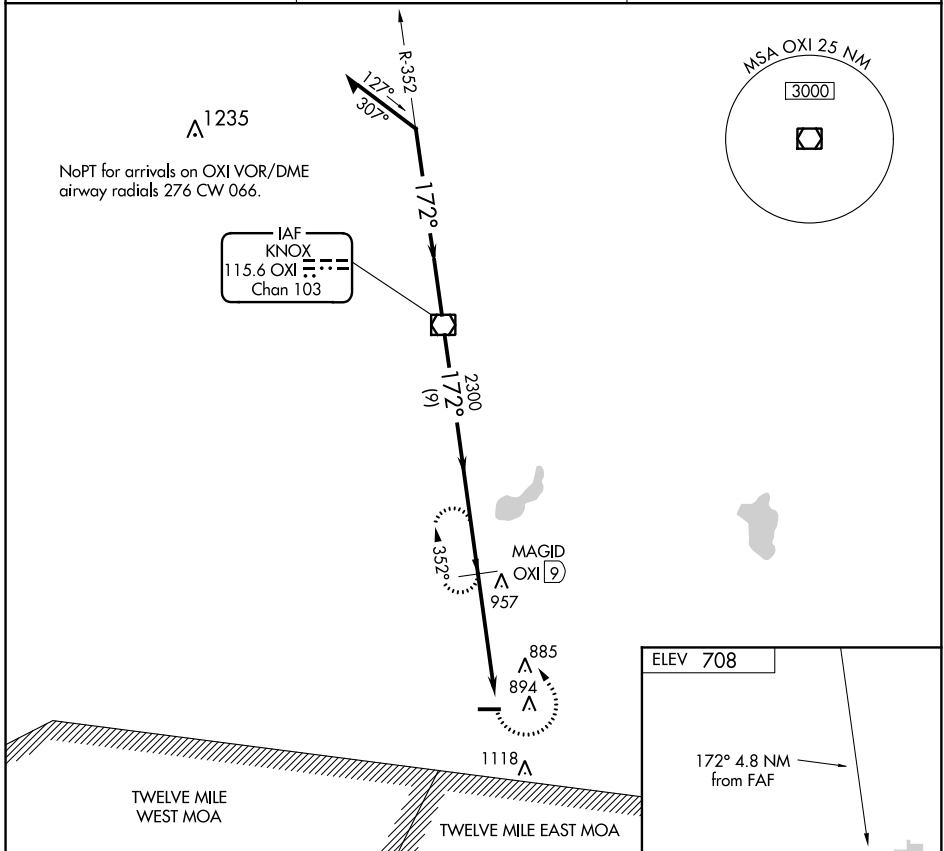
VOR/DME OXI 115.6 Chan 103	APP CRS 172°	Rwy Idg TDZE Apt Elev N/A N/A 708
--	------------------------	---

VOR/DME-A

ARENS FIELD (RWN)

<p>▼ Use Knox altimeter setting; when not received, use Rochester altimeter setting and increase all MDA 20 feet.</p> <p>▲ NA</p>	<p>MISSED APPROACH: Climbing left turn to 2300 via OXI R-172 to MAGID/OXI 9 DME and hold.</p>
---	--

<p>OXI AWOS-3 135.775</p>	<p>SOUTH BEND APP CON ★ 132.05 257.8</p>	<p>UNICOM 122.8 (CTAF) ①</p>
--------------------------------------	---	--



CATEGORY	A	B	C	D
③ CIRCLING	1280-1	569 (600-1)	1480-2¼ 772 (800-2¼)	NA

REIL Rwy 9 and 27 **①**
 LURL Rwy 9-27 **①**

EC-2: 27 FEB 2020 to 26 MAR 2020

EC-2: 27 FEB 2020 to 26 MAR 2020