

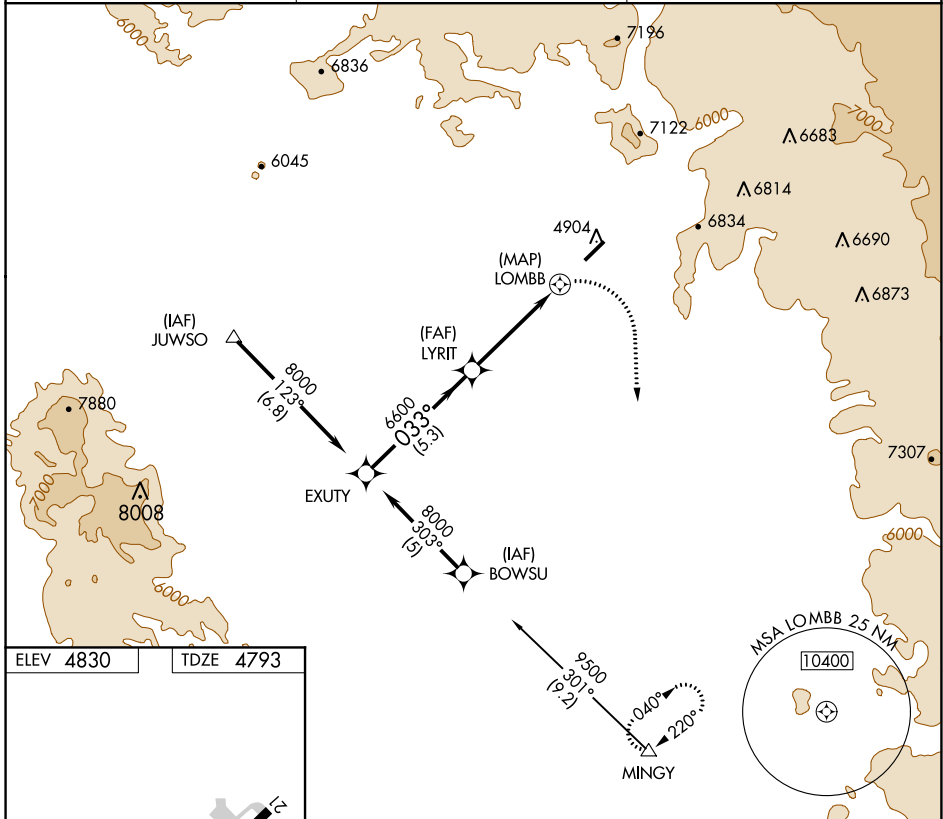
GPS RWY 3 SEDONA (SE/Z)

APP CRS	Rwy Idg	5132
033°	TDZE	4793
	Apt Elev	4830

▼ When local altimeter not received, procedure not authorized.
▲ NA Cat D circling not authorized northwest of Rwy 3-21.
 Circling Rwy 21 NA at night.

MISSED APPROACH: Climbing right turn to 12000 direct MINGY WP and hold.

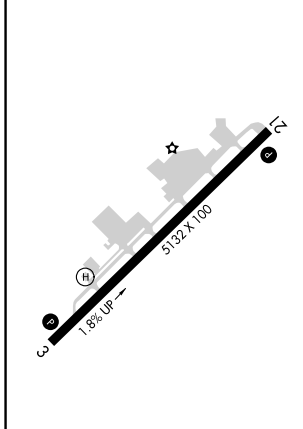
AWOS-3PT 118.525	PHOENIX APP CON 126.375 236.775	UNICOM 123.0 (CTAF) 📻
----------------------------	---	--



SW-4, 07 OCT 2021 to 04 NOV 2021

SW-4, 07 OCT 2021 to 04 NOV 2021

ELEV 4830	TDZE 4793
-----------	-----------



📻 MIRL Rwy 3-21
📻 REIL Rwy 3 and 21

Procedure Turn NA EXUTY 8000 033° LYRIT 6600 3.00° TCH 50 LOMBB 12000 MINGY	VGS1 and descent angles not coincident (VGS1 Angle 3.00/TCH 44).		12000 MINGY
	5.3 NM	4.4 NM	1.3 NM
CATEGORY	A	B	C
S-3	6140-1½ 1347 (1400-1½)	6240-1½ 1447 (1500-1½)	6560-3 1767 (1800-3)
📻 CIRCLING	6140-1½ 1310 (1400-1½)	6240-1½ 1410 (1500-1½)	NA