

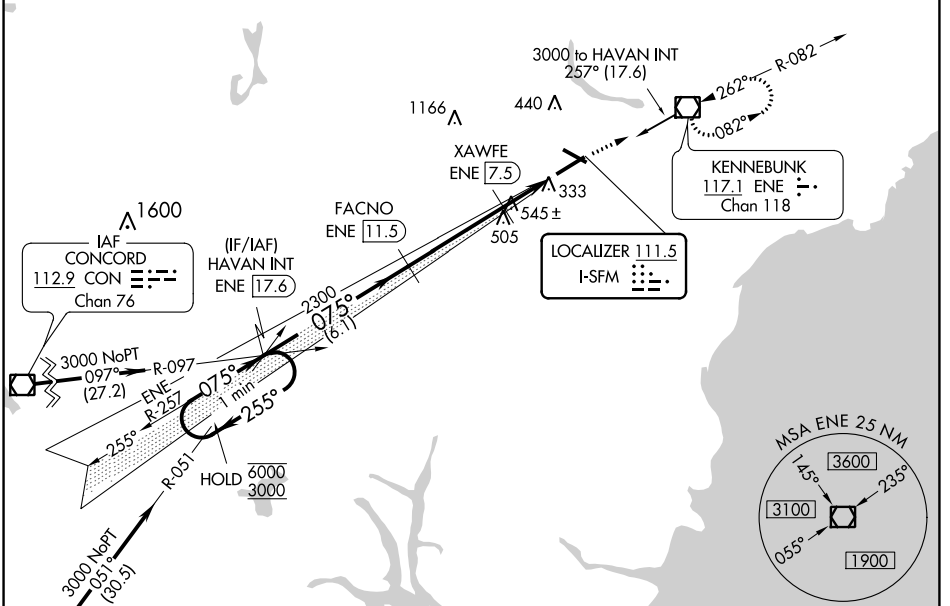
LOC I-SFM <b>111.5</b>	APP CRS <b>075°</b>	Rwy Idg <b>6389</b>
		TDZE <b>241</b>
		Apt Elev <b>244</b>

# ILS or LOC RWY 7

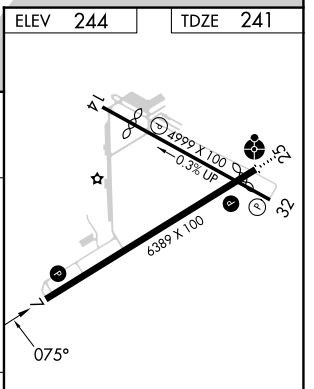
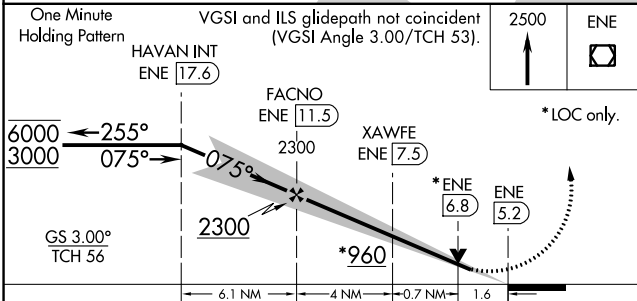
SANFORD SEACOAST RGNL (SFM)

DME required for LOC only.		MISSED APPROACH: Climb to 2500 direct ENE VOR/DME and hold, continue climb-in-hold to 2500.	
⚠ NA Rwy 7 helicopter visibility reduction below 3/4 SM NA. DME from ENE VOR/DME. Simultaneous reception of I-SFM and ENE DME required.			

AWOS-3PT <b>120.025</b>	PORTLAND APP CON * <b>119.75 269.35</b>	CLNC DEL <b>121.725</b>	UNICOM <b>123.075 (CTAF) 0</b>
----------------------------	--	----------------------------	-----------------------------------



ELEV 244	TDZE 241
----------	----------



CATEGORY	A	B	C	D
S-ILS 7	441-3/4 200 (200-3/4)			
S-LOC 7	800-1 559 (600-1)	800-1 5/8 559 (600-1 5/8)		
CIRCLING	800-1 556 (600-1)	1180-2 3/4 936 (1000-2 3/4)	1240-3 996 (1000-3)	

REIL Rwy 7 0  
 HIRL Rwy 7-25 0  
 MIRL Rwy 14-32 0

NE-1, 22 FEB 2024 to 21 MAR 2024

NE-1, 22 FEB 2024 to 21 MAR 2024

WAAS CH <b>53521</b> <b>W25A</b>	APP CRS <b>255°</b>	Rwy Idg TDZE Apt Elev	<b>6001</b> <b>235</b> <b>244</b>
--	------------------------	-----------------------------	---

# RNAV (GPS) RWY 25

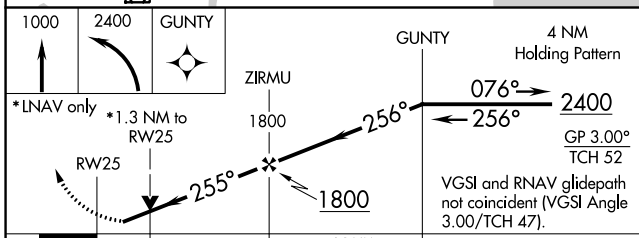
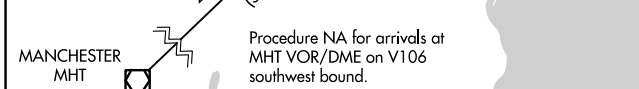
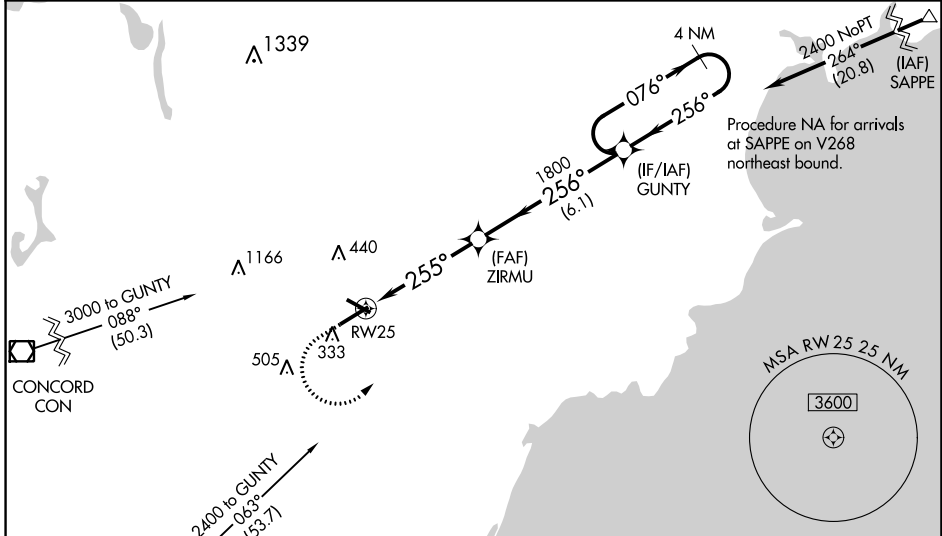
SANFORD SEACOAST RGNL (SFM)

Baro-VNAV and VDP NA when using Rochester, NH altimeter setting. For uncompensated Baro-VNAV systems, LNAV/VNAV NA below -15°C (5°F) or above 54°C (130°F). Helicopter visibility reduction below 3/4 SM NA. DME/DME RNP-0.3 NA. Inop table does not apply to LPV or LNAV Cats A/B. For inop ODALS, increase LNAV/VNAV all Cats visibility to 1 1/2 and LNAV Cats C/D visibility to 1 3/8. When local altimeter setting not received, use Rochester, NH altimeter setting; increase LPV DA to 534; increase LNAV/VNAV DA to 713 and visibility all Cats 1/2 SM; increase all MDA 40 feet, LNAV Cats C/D visibility 1/2 SM, and Circling Cat C visibility 1/2 SM; for inop ODALS, increase LNAV/VNAV all Cats visibility to 1 3/8 and LNAV Cat C/D visibility to 1 3/8.

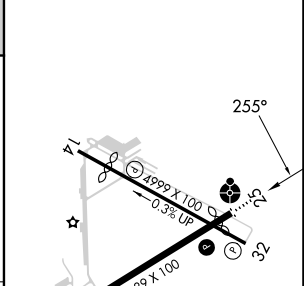


**MISSED APPROACH:**  
Climb to 1000 then climbing left turn to 2400 direct GUNTY and hold.

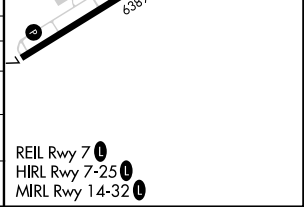
AWOS-3PT <b>120.025</b>	PORTLAND APP CON* <b>119.75 269.35</b>	CINC DEL <b>121.725</b>	UNICOM <b>123.075</b> (CTAF) <b>0</b>
----------------------------	---	----------------------------	--



ELEV <b>244</b>	TDZE <b>235</b>
-----------------	-----------------



CATEGORY	A	B	C	D
LPV DA	496-1 261 (300-1)			
LNAV/DA VNAV	675-1 3/8 440 (500-1 3/8)			
LNAV MDA	680-1 445 (500-1)	680-1 1/8 445 (500-1 1/8)		
CIRCLING	760-1 516 (600-1)	1180-2 3/4 936 (1000-2 3/4)	1240-3 996 (1000-3)	



NE-1, 22 FEB 2024 to 21 MAR 2024

NE-1, 22 FEB 2024 to 21 MAR 2024

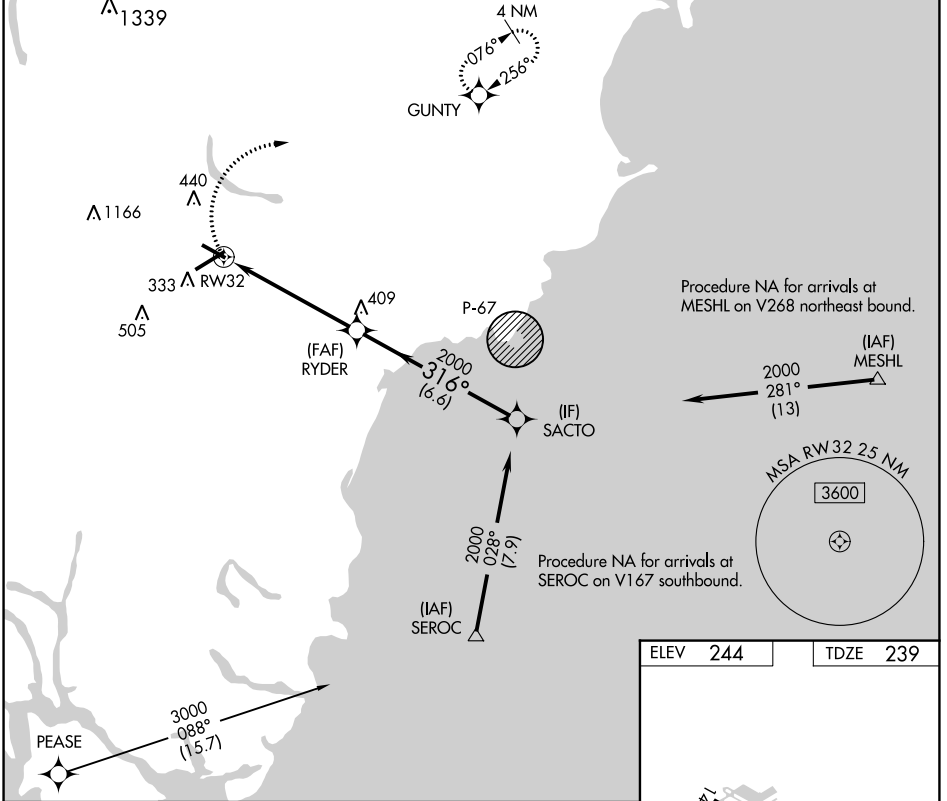
APP CRS <b>316°</b>	Rwy Idg TDZE Apt Elev	<b>4999</b> <b>239</b> <b>244</b>
------------------------	-----------------------------	---

# RNAV (GPS) RWY 32

SANFORD SEACOAST RGNL (SFM)

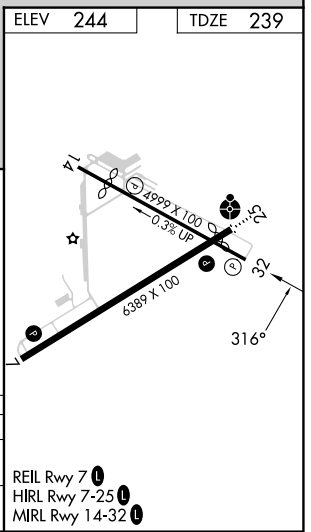
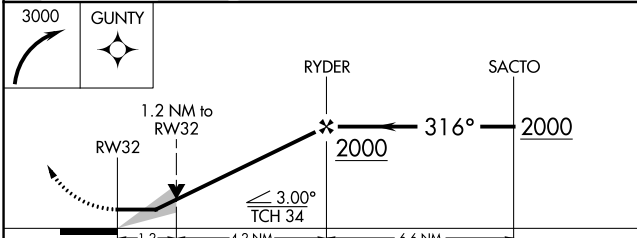
RNP APCH.		MISSED APPROACH: Climbing right turn to 3000 direct GUNTY and hold, continue climb-in-hold to 3000.	
-----------	--	---	--

AWOS-3PT <b>120.025</b>	PORTLAND APP CON* <b>119.75 269.35</b>	CLNC DEL <b>121.725</b>	UNICOM <b>123.075 (CTAF) 0</b>
----------------------------	---	----------------------------	-----------------------------------



NE-1, 22 FEB 2024 to 21 MAR 2024

NE-1, 22 FEB 2024 to 21 MAR 2024



CATEGORY	A	B	C	D
LNAV MDA	660-1	421 (500-1)	660-1¼	421 (500-1¼)
CIRCLING	760-1	516 (600-1)	1180-2¾ 936 (1000-2¾)	1240-3 996 (1000-3)

REIL Rwy 7 0  
HIRL Rwy 7-25 0  
MIRL Rwy 14-32 0

WAAS CH <b>86921</b> <b>W07A</b>	APP CRS <b>075°</b>	Rwy Idg TDZE <b>241</b> Apt Elev <b>244</b>	<b>6389</b>
--	------------------------	---	-------------

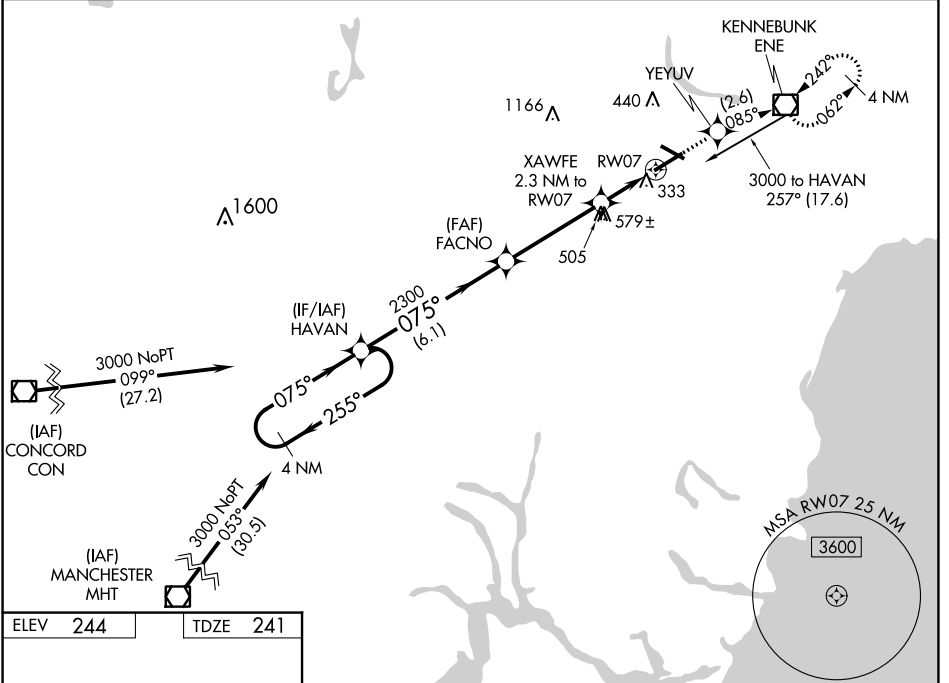
# RNAV (GPS) RWY 7

SANFORD SEACOAST RGNL (SFM)

For uncompensated Baro-VNAV systems, LNAV/VNAV NA below -15°C (5°F) or above 54°C (130°F). Helicopter visibility reduction below 3/4 SM NA. DME/DME RNP-0.3 NA. Baro-VNAV and VDP NA when using Rochester, NH altimeter setting. When local altimeter setting not received, use Rochester, NH altimeter setting: increase LPV DA to 479; increase LNAV/VNAV DA to 699 and visibility all Cats 1/2 SM, increase all MDA 40 feet, and Circling Cat C visibility 1/4 SM.

MISSED APPROACH: Climb to 3000 direct YEUUV and on track 085° to ENE VOR/DME and hold, continue climb-in-hold to 3000.

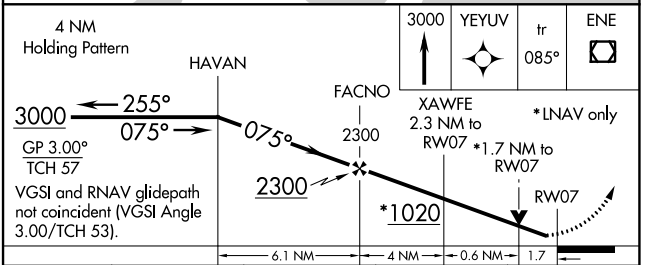
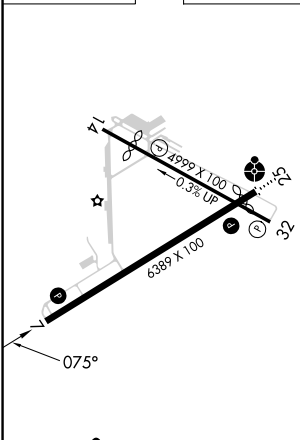
AWOS-3PT <b>120.025</b>	PORTLAND APP CON* <b>119.75 269.35</b>	CLNC DEL <b>121.725</b>	UNICOM <b>123.075 (CTAF)</b>
----------------------------	---	----------------------------	---------------------------------



NE-1, 22 FEB 2024 to 21 MAR 2024

NE-1, 22 FEB 2024 to 21 MAR 2024

ELEV 244	TDZE 241
----------	----------



CATEGORY	A	B	C	D
LPV DA		441-3/4	200 (200-3/4)	
LNAV/VNAV DA		650-1 3/8	409 (500-1 3/8)	
LNAV MDA	840-1	599 (600-1)	840-1 3/4	599 (600-1 3/4)
<b>C</b> CIRCLING	840-1	596 (600-1)	1180-2 3/4	1240-3
			936 (1000-2 3/4)	996 (1000-3)

REIL Rwy 7 **①**  
HIRL Rwy 7-25 **①**  
MIRL Rwy 14-32 **①**

VORTAC ENE <b>117.1</b> Chan <b>118</b>	APP CRS <b>261°</b>	Rwy Idg TDZE Apt Elev	<b>6001</b> <b>235</b> <b>244</b>
---	------------------------	-----------------------------	---

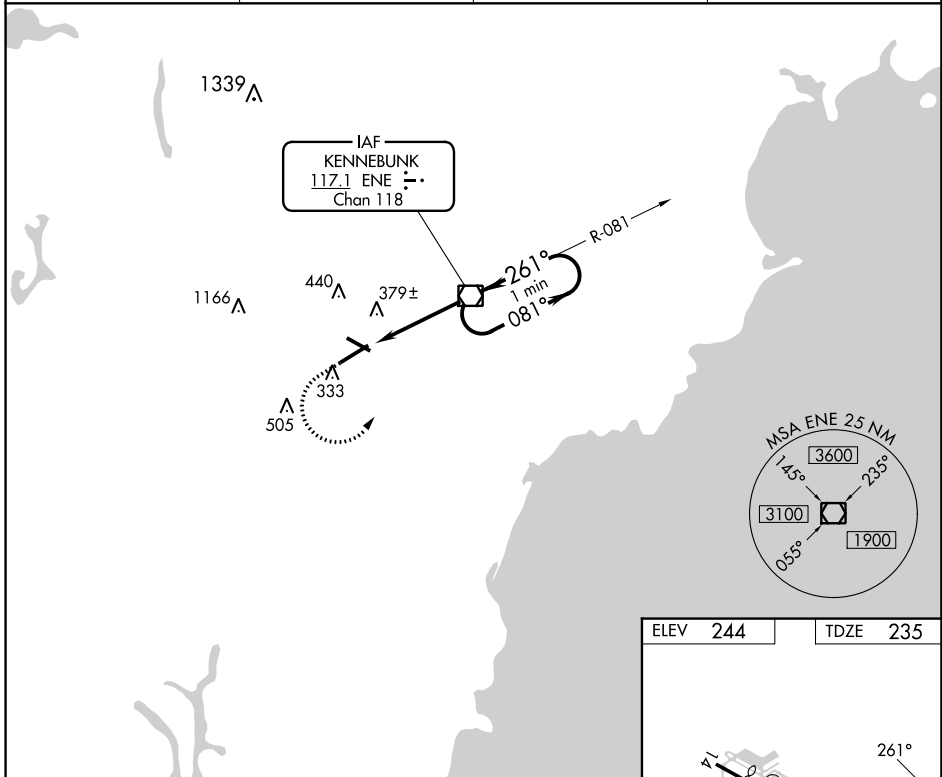
# VOR RWY 25

SANFORD SEACOAST RGNL (SFM)

**⚠** Inoperative table does not apply to S-25 Cats A/B. For inoperative ODALS, increase S-25 Cats C/D visibility to 1 $\frac{1}{8}$ . When local altimeter setting not received, use Rochester, NH altimeter setting increase all MDA 40 feet, S-25 Cats C/D visibility  $\frac{1}{8}$  SM, and Circling Cat C visibility  $\frac{1}{4}$  SM; for inop ODALS, increase S-25 Cats C/D visibility to 1 $\frac{1}{8}$ . Rwy 25 helicopter visibility reduction below  $\frac{3}{4}$  SM NA.

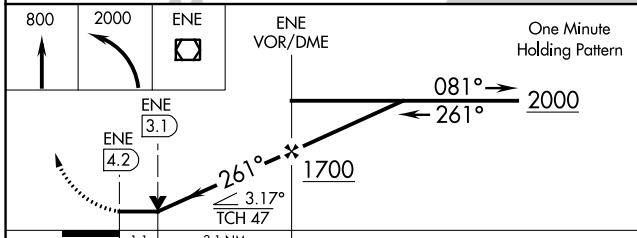
**ODALS** MISSED APPROACH: Climb to 800 then climbing left turn to 2000 direct ENE VOR/DME and hold.

AWOS-3PT <b>120.025</b>	PORTLAND APP CON * <b>119.75 269.35</b>	CLNC DEL <b>121.725</b>	UNICOM <b>123.075</b> (CTAF) <b>0</b>
----------------------------	--	----------------------------	--



NE-1, 22 FEB 2024 to 21 MAR 2024

NE-1, 22 FEB 2024 to 21 MAR 2024



ELEV	244	TDZE	235
------	-----	------	-----

REIL Rwy 7 **0**  
HIRL Rwy 7-25 **0**  
MIRL Rwy 14-32 **0**

FAF to MAP 4.2 NM

Knots	60	90	120	150	180
Min:Sec	4:12	2:48	2:06	1:41	1:24