

(HIVKA2.HIVKA) 18312

# HIVKA TWO DEPARTURE (RNAV)

AL-10546 (FAA)

ST GEORGE RGNL (SGT)  
ST GEORGE, UTAH

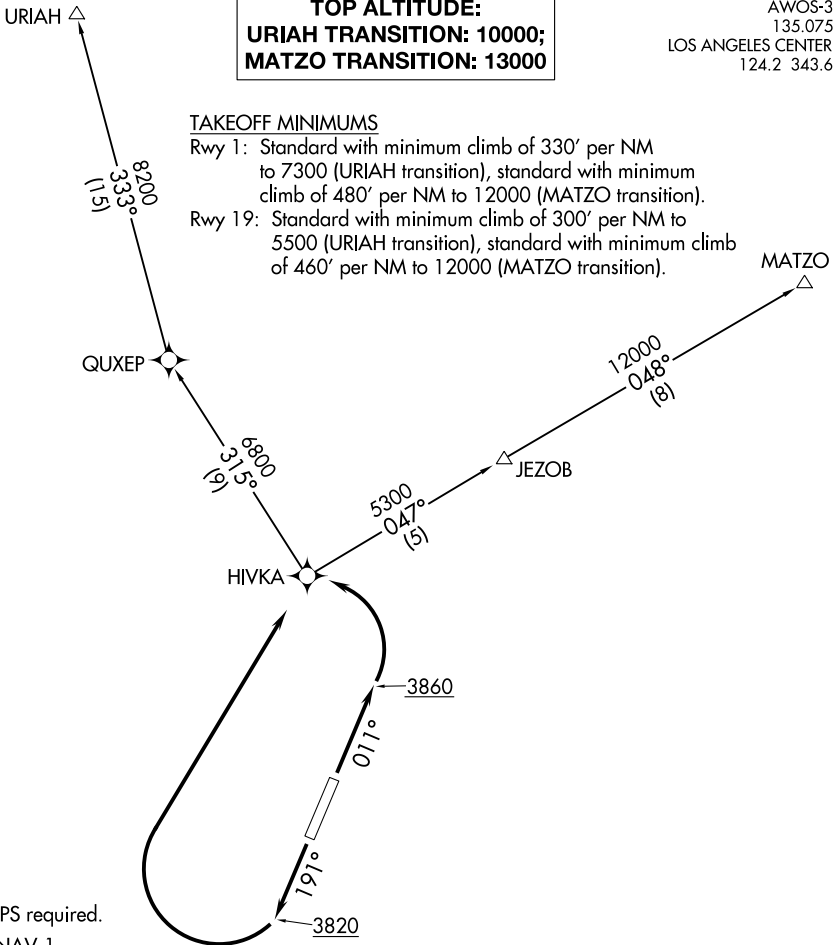
AWOS-3  
135.075  
LOS ANGELES CENTER  
124.2 343.6

**TOP ALTITUDE:**  
**URIAH TRANSITION: 10000;**  
**MATZO TRANSITION: 13000**

### TAKEOFF MINIMUMS

Rwy 1: Standard with minimum climb of 330' per NM to 7300 (URIAH transition), standard with minimum climb of 480' per NM to 12000 (MATZO transition).

Rwy 19: Standard with minimum climb of 300' per NM to 5500 (URIAH transition), standard with minimum climb of 460' per NM to 12000 (MATZO transition).



NOTE: GPS required.  
NOTE: RNAV-1.  
NOTE: Chart not to scale.

### DEPARTURE ROUTE DESCRIPTION

TAKEOFF RUNWAY 1: Climb heading 011° to 3860, then climbing left turn direct HIVKA, thence. . . .

TAKEOFF RUNWAY 19: Climb heading 191° to 3820, then climbing right turn direct HIVKA, thence. . . .

. . . .(transition).

MATZO TRANSITION (HIVKA2.MATZO)

URIAH TRANSITION (HIVKA2.URIAH)

SW-4, 07 OCT 2021 to 04 NOV 2021

SW-4, 07 OCT 2021 to 04 NOV 2021

HIVKA TWO DEPARTURE (RNAV)  
(HIVKA2.HIVKA) 31MAR16

ST GEORGE, UTAH  
ST GEORGE RGNL (SGT)

(PHYL2.PHYLI) 18312

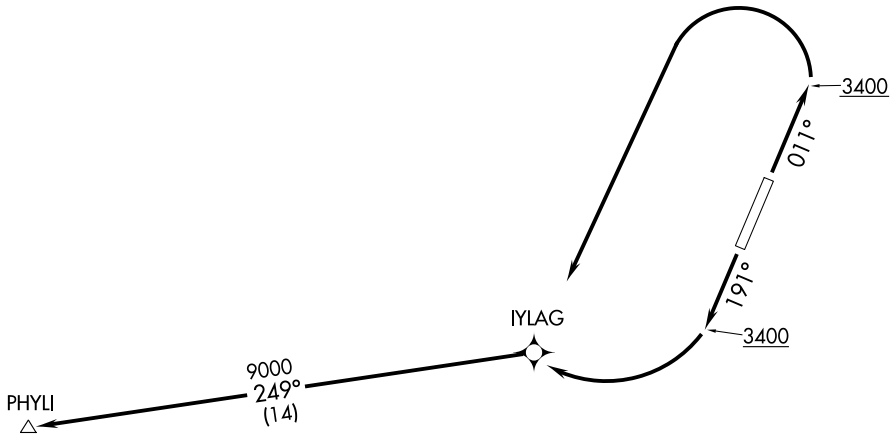
# PHYLI TWO DEPARTURE (RNAV)

AL-10546 (FAA)

ST GEORGE RGNL (SGU)  
ST GEORGE, UTAH

AWOS-3  
135.075  
LOS ANGELES CENTER  
124.2 343.6

**TOP ALTITUDE:  
9000**



SW-4, 07 OCT 2021 to 04 NOV 2021

SW-4, 07 OCT 2021 to 04 NOV 2021

NOTE: GPS required.

NOTE: RNAV-1.

### TAKEOFF MINIMUMS

Rwy 1: Standard with minimum climb of 245' per NM to 3800.

Rwy 19: Standard with minimum climb of 240' per NM to 5900.

NOTE: Chart not to scale.



### DEPARTURE ROUTE DESCRIPTION

TAKEOFF RUNWAY 1: Climb heading 011° to 3400 then climbing left turn to 9000 (or higher assigned altitude) direct IYLAG and on track 249° to PHYLI.

TAKEOFF RUNWAY 19: Climb heading 191° to 3400 then climbing right turn to 9000 (or higher assigned altitude) direct IYLAG and on track 249° to PHYLI.

# PHYLI TWO DEPARTURE (RNAV)

(PHYL2.PHYLI) 31MAR16

ST GEORGE, UTAH  
ST GEORGE RGNL (SGU)