

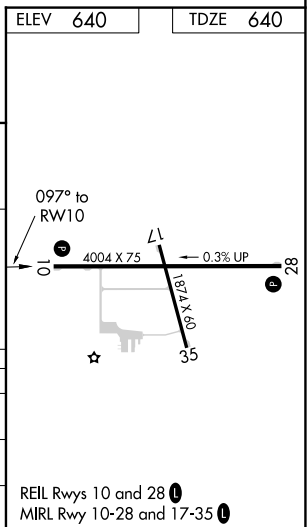
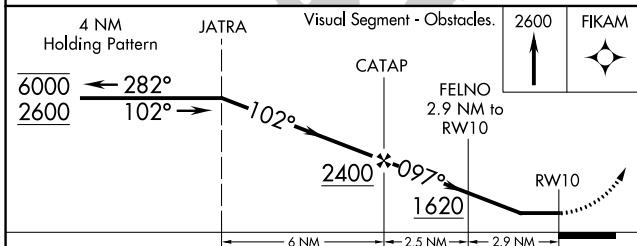
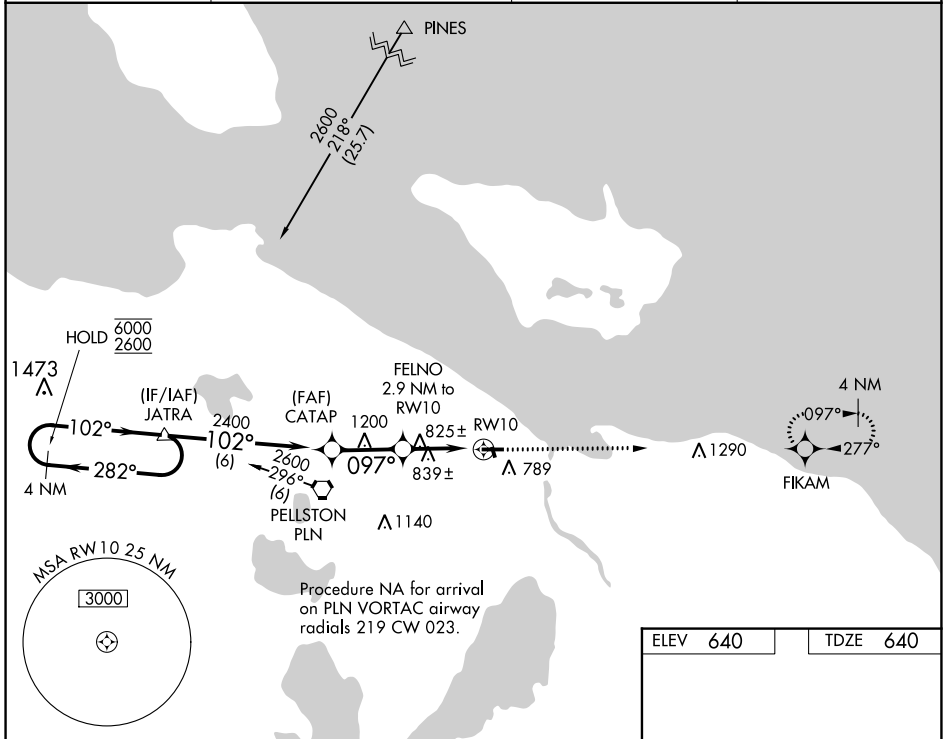
WAAS CH <b>50224</b> <b>W10A</b>	APP CRS <b>097°</b>	Rwy Idg TDZE Apt Elev	<b>4004</b> <b>640</b> <b>640</b>
--	------------------------	-----------------------------	---

# RNAV (GPS) RWY 10

CHEBOYGAN COUNTY (SLH)

RNP APCH - GPS.	MISSED APPROACH: Climb to 2600 direct FIKAM and hold.
<p><b>▽</b> Rwy 10 helicopter visibility reduction below 1 SM NA.</p> <p><b>▲</b> Procedure NA at night.</p>	

AWOS-3 <b>118.175</b>	MINNEAPOLIS CENTER <b>134.6 354.05</b>	UNICOM <b>122.8 (CTAF)</b>	<b>122.5 0</b>
--------------------------	---	-------------------------------	----------------



CATEGORY	A	B	C	D
LP MDA	1080-1	440 (500-1)	1080-1¼ 440 (500-1¼)	NA
LNAV MDA	1100-1	460 (500-1)	1100-1⅜ 460 (500-1⅜)	NA
<b>C</b> CIRCLING	1140-1	500 (500-1)	1140-1½ 500 (500-1½)	NA

WAAS CH <b>99727</b> <b>W28A</b>	APP CRS <b>277°</b>	Rwy Idg TDZE Apt Elev	<b>4004</b> <b>637</b> <b>640</b>
--	------------------------	-----------------------------	---

# RNAV (GPS) RWY 28

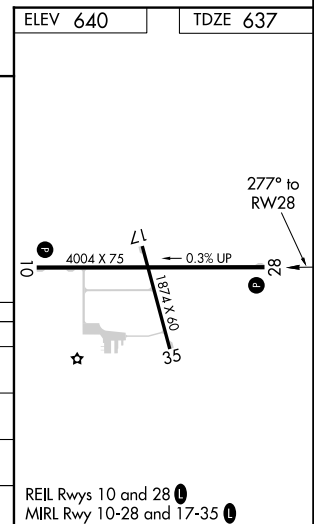
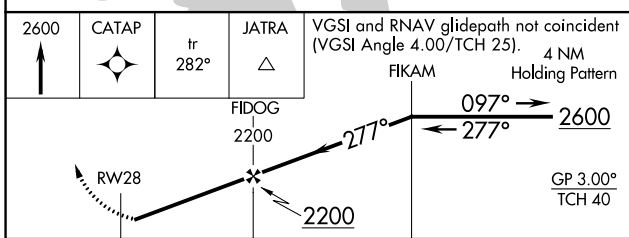
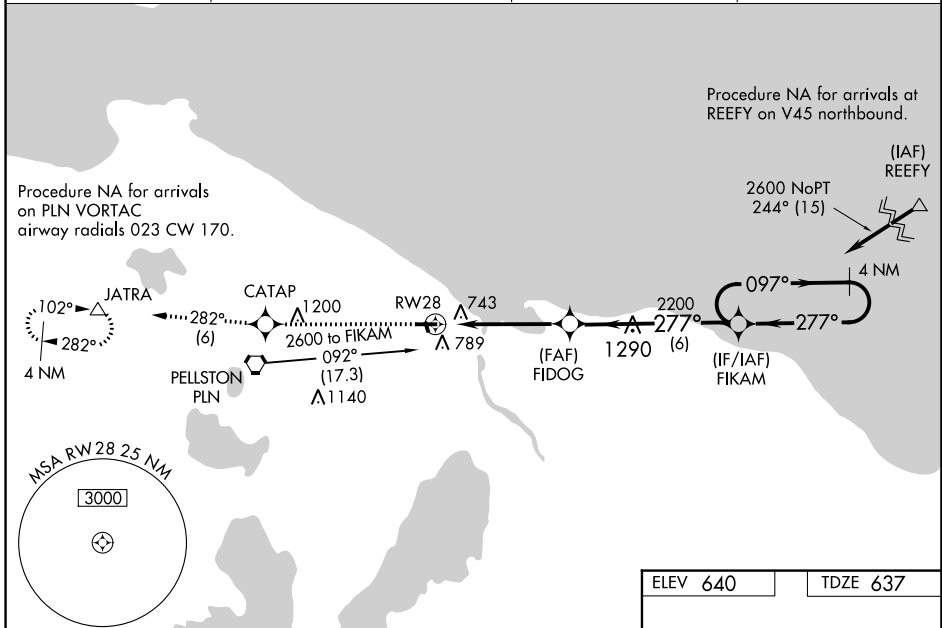
CHEBOYGAN COUNTY (SLH)

RNP APCH.

**▼** Night landing Rwy 17, 35 NA. Baro-VNAV NA when using Pellston altimeter setting. For uncompensated Baro-VNAV systems, LNAV/VNAV NA below -16°C (4°F) or above 54°C (130°F). Helicopter visibility reduction below 3/4 SM NA. When local altimeter setting not received, use Pellston altimeter setting; increase all DA 41 feet and all MDA 60 feet and increase LNAV/VNAV all Cats visibility 1/4 SM and LNAV Cat C visibility 1/8 SM.

**MISSED APPROACH:** Climb to 2600 direct CATAP and on track 282° to JATRA and hold.

AWOS-3 <b>118.175</b>	MINNEAPOLIS CENTER <b>134.6 354.05</b>	UNICOM <b>122.8 (CTAF)</b>	<b>122.5</b> <b>Ⓛ</b>
--------------------------	---	-------------------------------	-----------------------



CATEGORY	A	B	C	D
LPV DA	887-1	250 (300-1)		NA
LNAV/VNAV DA	953-1	316 (400-1)		NA
LNAV MDA	1060-1	423 (500-1)	1060-1 1/4 423 (500-1 1/4)	NA
<b>C</b> CIRCLING	1140-1	500 (500-1)	1140-1 1/2 500 (500-1 1/2)	NA

EC-1, 22 FEB 2024 to 21 MAR 2024

EC-1, 22 FEB 2024 to 21 MAR 2024

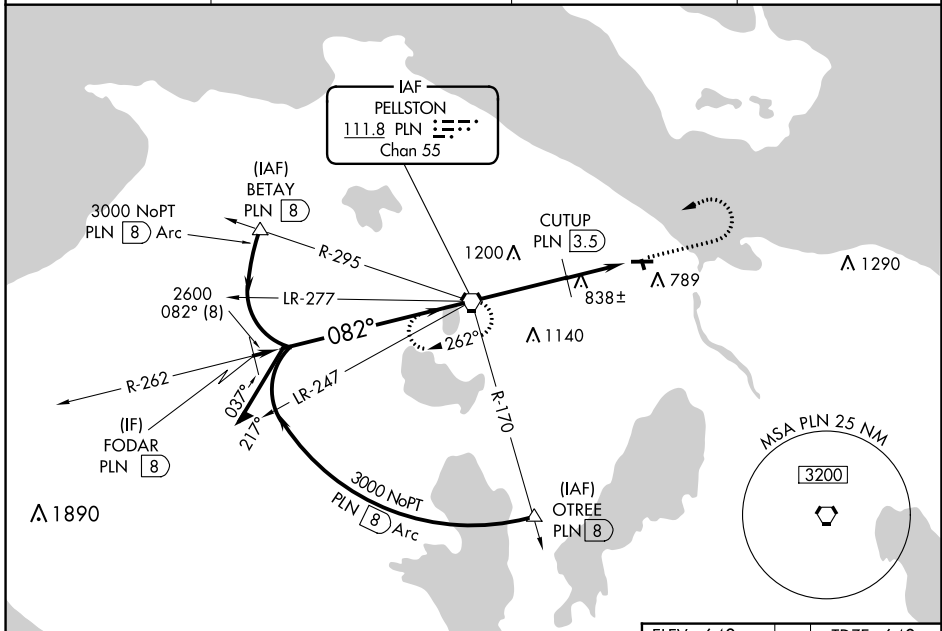
VORTAC PLN <b>111.8</b> Chan <b>55</b>	APP CRS <b>082°</b>	Rwy Idg <b>4004</b> TDZE <b>640</b> Apt Elev <b>640</b>
--	------------------------	---

**VOR RWY 10**  
CHEBOYGAN COUNTY (SLH)

**▼** Helicopter visibility reduction below 1 SM NA. Night landing Rwy 10, 17, 35 NA. When local altimeter setting not received, use Pellston altimeter setting; increase all MDA 60 feet; increase S-10 Cat B visibility ¼ SM, S-10 Cat C visibility ½ SM, Circling Cat B visibility ¼ SM and Circling Cat C visibility ½ SM; increase CUTUP fix minimums S-10 Cat C visibility ½ SM.

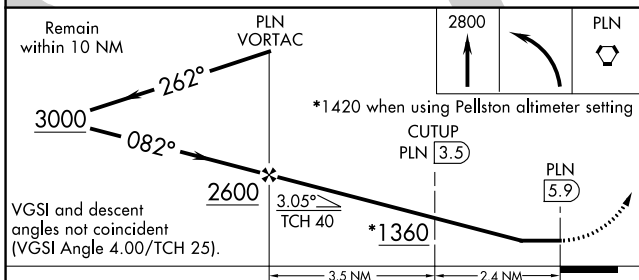
**MISSED APPROACH:**  
Climb to 2800 then left turn direct PLN VORTAC and hold.

AWOS-3 <b>118.175</b>	MINNEAPOLIS CENTER <b>134.6 354.05</b>	UNICOM <b>122.8 (CTAF)</b>	<b>122.5 0</b>
--------------------------	---	-------------------------------	----------------

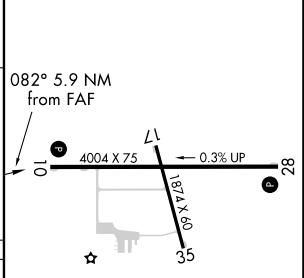


EC-1, 22 FEB 2024 to 21 MAR 2024

EC-1, 22 FEB 2024 to 21 MAR 2024



ELEV 640	TDZE 640
----------	----------



CATEGORY	A	B	C	D
S-10	1360-1	720 (800-1)	1360-2 720 (800-2)	NA
<b>C</b> CIRCLING	1360-1	720 (800-1)	1360-2 720 (800-2)	NA
CUTUP FIX MINIMUMS				
S-10	1100-1	460 (500-1)	1100-1½ 460 (500-1½)	NA
<b>C</b> CIRCLING	1140-1	500 (500-1)	1140-1½ 500 (500-1½)	NA

REIL Rwys 10 and 28 0  
MIRL Rwy 10-28 and 17-35 0

FAF to MAP 5.9 NM

Knots	60	90	120	150	180
Min:Sec	5:54	3:56	2:57	2:22	1:58