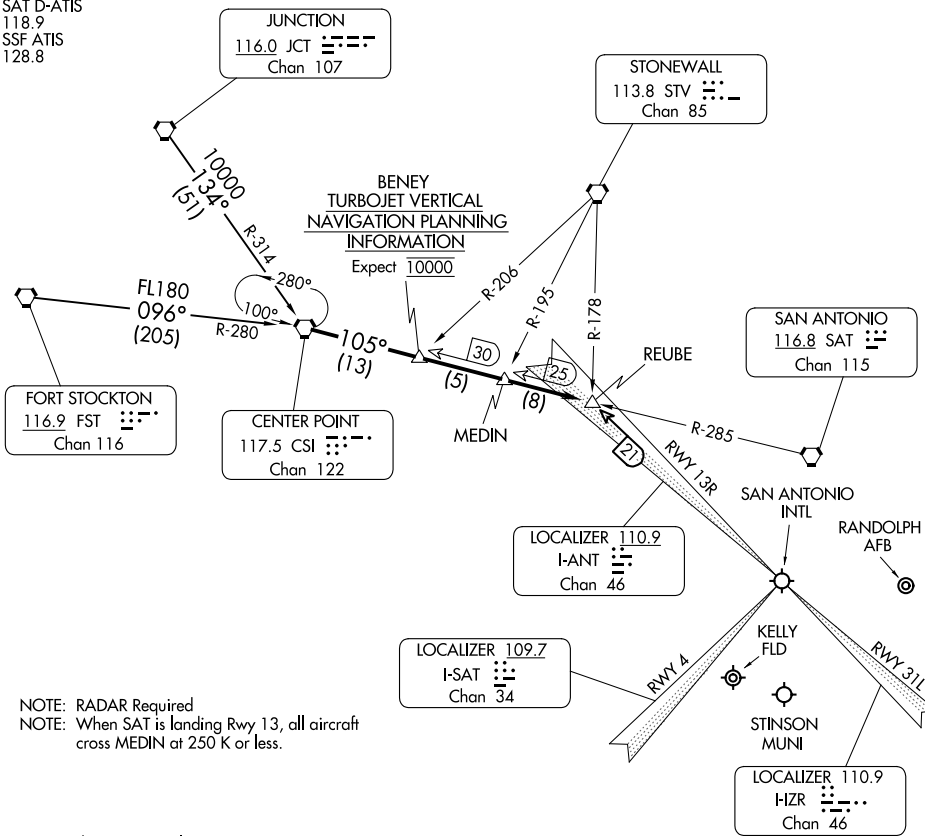


# CENTERPOINT TWO ARRIVAL

SAN ANTONIO, TEXAS

SAN ANTONIO APP CON  
 125.1 307.0 (Rwys 13R and 22)  
 125.7 290.225 (Rwys 4 and 31L)  
 KRND ATIS ★  
 290.525  
 KSKF ATIS  
 120.45 273.5  
 SAT D-ATIS  
 118.9  
 SSF ATIS  
 128.8



NOTE: RADAR Required  
 NOTE: When SAT is landing Rwy 13, all aircraft cross MEDIN at 250 K or less.

NOTE: Chart not to scale.

## ARRIVAL ROUTE DESCRIPTION

FORT STOCKTON TRANSITION (FST.CSI2): From over FST VORTAC via FST R-096 and CSI R-280 to CSI VORTAC. Thence . . . .

JUNCTION TRANSITION (JCT.CSI2): From over JCT VORTAC via JCT R-134 and CSI R-314 to CSI VORTAC. Thence . . . .

. . . . From over CSI VORTAC on CSI R-105 to REUBE INT. Expect vectors to final approach course.

# CENTERPOINT TWO ARRIVAL

SAN ANTONIO, TEXAS

SC-3, 22 FEB 2024 to 21 MAR 2024

SC-3, 22 FEB 2024 to 21 MAR 2024

RNAV 1 - DME/DME/IRU or GPS.

RADAR required.

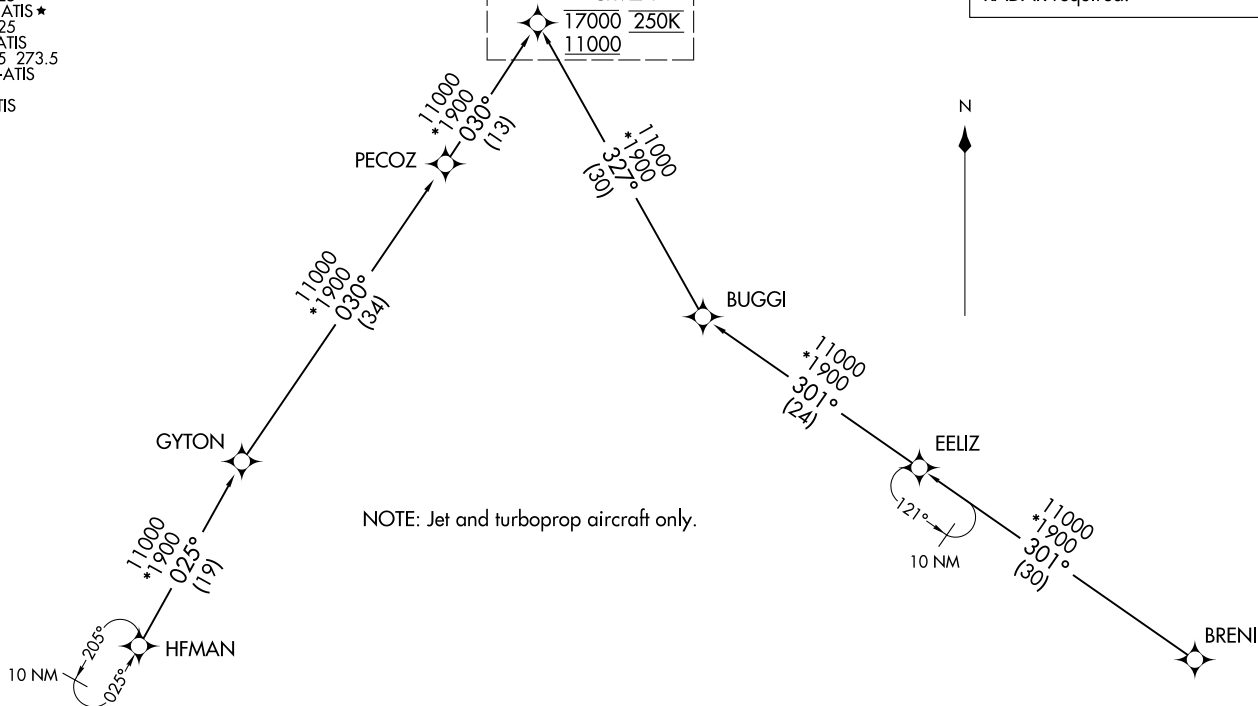
See following page for Arrival Routes	
CRVZA	
17000	250K
11000	

(CRVZA, CRVZA1) 24025  
AL-369 (FAA)  
CRVZA ONE ARRIVAL (RNAV) Transition Routes

SAN ANTONIO, TEXAS



NOTE: Jet and turboprop aircraft only.



SAN ANTONIO APP CON  
125.7 290.225  
BAZ ATIS  
119.325  
KRND ATIS ★  
290.525  
KSKF ATIS  
120.45 273.5  
SAT D-ATIS  
118.9  
SSF ATIS  
128.8

BRENI TRANSITION (BRENI.CRVZA1)  
EELIZ TRANSITION (EELIZ.CRVZA1)  
HFMAN TRANSITION (HFMAN.CRVZA1)

(CONTINUED ON FOLLOWING PAGE)

NOTE: Chart not to scale.

CRVZA ONE ARRIVAL (RNAV) Transition Routes

(CRVZA, CRVZA1) 25JAN24

SAN ANTONIO, TEXAS

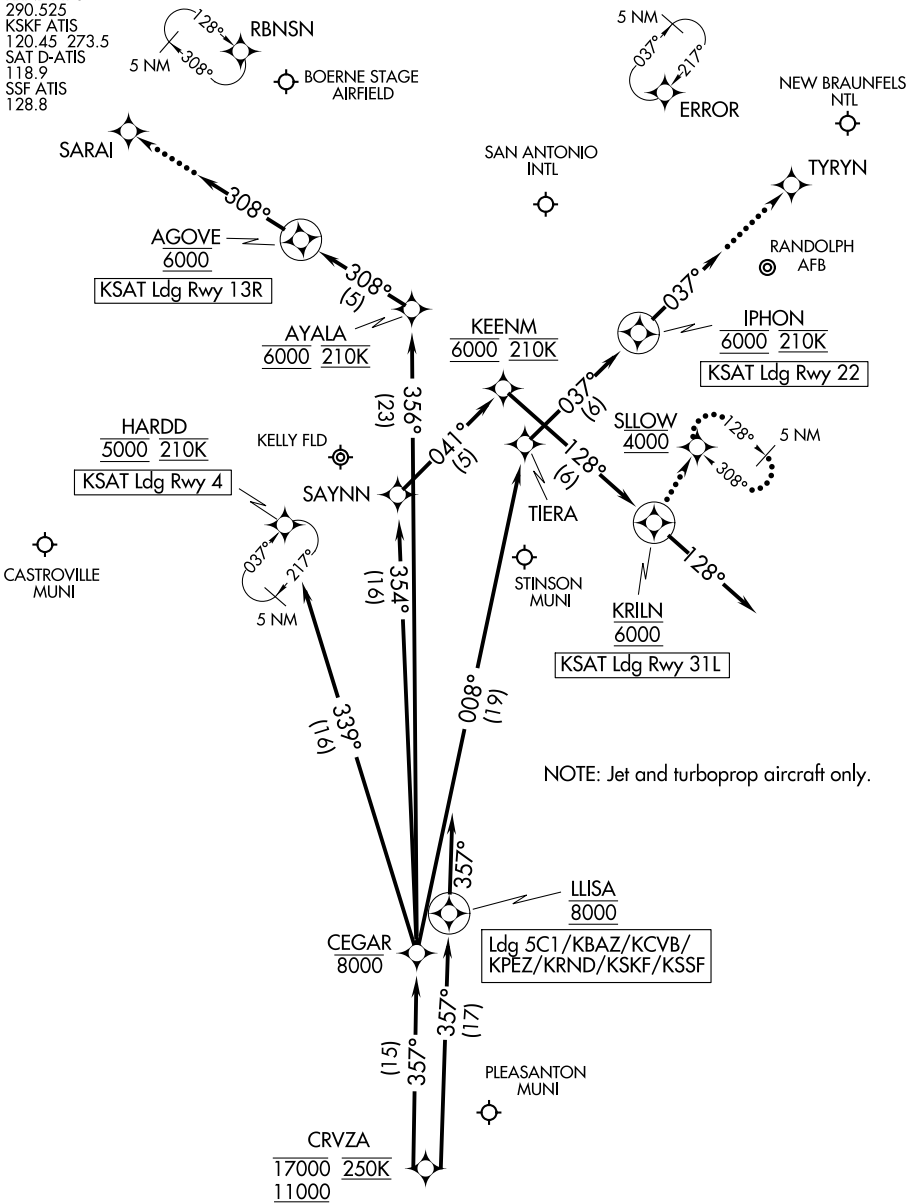
# CRVZA ONE ARRIVAL (RNAV) Arrival Routes

SAN ANTONIO, TEXAS

SAN ANTONIO APP CON  
 125.7 290.225  
 BAZ ATIS  
 119.325  
 KRND ATIS ★  
 290.525  
 KSKF ATIS  
 120.45 273.5  
 SAT D-ATIS  
 118.9  
 SSF ATIS  
 128.8

RNAV 1 - DME/DME/IRU or GPS.

RADAR required.



NOTE: Jet and turboprop aircraft only.

NOTE: Chart not to scale.

(CONTINUED ON FOLLOWING PAGE)

ARRIVAL ROUTE DESCRIPTION

SAN ANTONIO INTL (KSAT): From CRVZA on track 357° to cross CEGAR at or below 8000.

LANDING KSAT RUNWAY 4: From CEGAR on track 339° to cross HARDD at 5000 and at 210K. Expect ILS or LOC RWY 4 approach.

LANDING KSAT RUNWAY 13R: From CEGAR on track 356° to cross AYALA at 6000 and at 210K, then on track 308° to cross AGOVE at 6000, then on track 308°. Expect RADAR vectors to final approach course.

LANDING KSAT RUNWAY 22: From CEGAR on track 008° to TIERA, then on track 037° to cross IPHON at 6000 and at 210K, then on track 037°. Expect RADAR vectors to final approach course.

LANDING KSAT RUNWAY 31L: From CEGAR on track 354° to SAYNN, then on track 041° to cross KEENM at 6000 and at 210K, then on track 128° to cross KRILN at 6000, then on track 128°. Expect RADAR vectors to final approach course.

LANDING KSKF/KBAZ/KCVB/KSSF/KPEZ/5C1/KRND: From CRVZA on track 357° to cross LLISA at 8000, then on track 357°. Expect RADAR vectors to final approach course.

LOST COMMUNICATIONS

KSAT RUNWAY 13R: After AGOVE proceed to SARAI, then on ILS or LOC RWY 13R or RNAV (GPS) Y RWY 13R approach.

KSAT RUNWAY 22: After IPHON proceed to TYRYN, then on RNAV (GPS) Y RWY 22 approach.

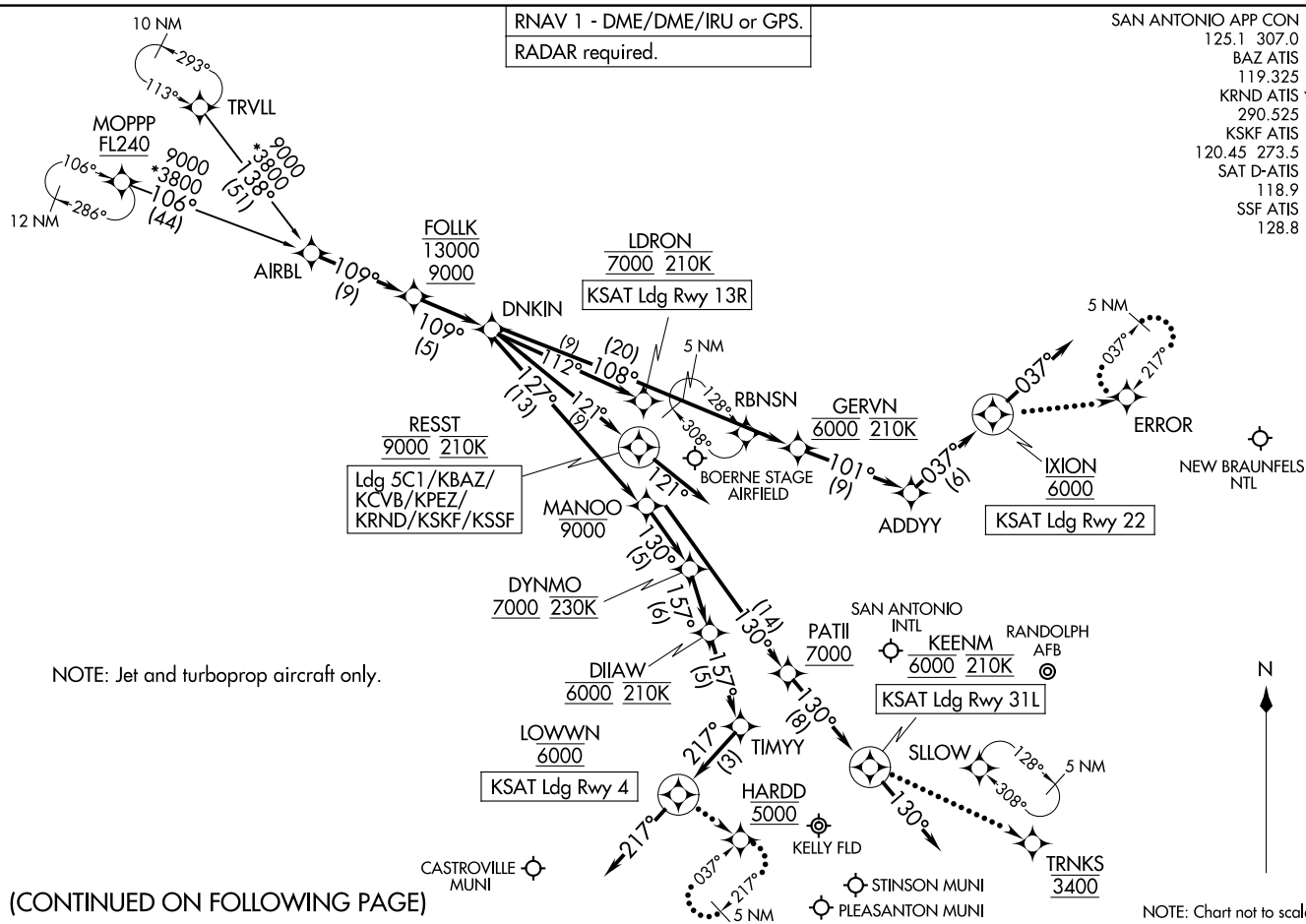
KSAT RUNWAY 31L: After KRILN proceed to SLOW at 4000 and hold.

SC-3, 22 FEB 2024 to 21 MAR 2024

SC-3, 22 FEB 2024 to 21 MAR 2024

DNKIN ONE ARRIVAL (RNAV)  
(AIRBL, DNKINI) 251AN24

(AIRBL, DNKINI) 24025  
DNKIN ONE ARRIVAL (RNAV)



NOTE: Jet and turboprop aircraft only.

(CONTINUED ON FOLLOWING PAGE)

NOTE: Chart not to scale.

SAN ANTONIO, TEXAS

SAN ANTONIO, TEXAS

AL-369 (FAA)

ARRIVAL ROUTE DESCRIPTION

SAN ANTONIO INTL (KSAT):

From AIRBL on track 109° to cross FOLLK between 9000 and 13000, then on track 109° to DNKIN.

LANDING KSAT RUNWAY 4: From DNKIN on track 127° to cross MANOO at or below 9000, then on track 130° to cross DYNMO at or above 7000 and at 230K, then on track 157° to cross DIIAW at 6000 and at 210K, then on track 157° to TIMYY, then on track 217° to cross LOWWN at 6000, then on track 217°. Expect RADAR vectors to final approach course.

LANDING KSAT RUNWAY 13R: From DNKIN on track 112° to cross LDRON at 7000 and at 210K. Expect ILS or LOC Rwy 13R approach.

LANDING KSAT RUNWAY 22: From DNKIN on track 108° to cross GERVN at 6000 and at 210K, then on track 101° to ADDYY, then on track 037° to cross IXION at 6000, then on track 037°. Expect RADAR vectors to final approach course.

LANDING KSAT RUNWAY 31L: From DNKIN on track 127° to cross MANOO at or below 9000, then on track 130° to cross PATII at or above 7000, then on track 130° to cross KEENM at 6000 and at 210K, then on track 130°. Expect RADAR vectors to final approach course.

LANDING KSKF, KBAZ, KCVB, KSSF, KPEZ, 5C1, KRND: From AIRBL on track 109° to cross FOLLK between 9000 and 13000, then on track 109° to DNKIN, then on track 121° to cross RESST at 9000 and at 210K, then on track 121°. Expect RADAR vectors to final approach course.

LOST COMMUNICATIONS

RUNWAY 4: After LOWWN, proceed to HARDD at 5000 and hold.

RUNWAY 22: After IXION, proceed direct to ERROR and hold.

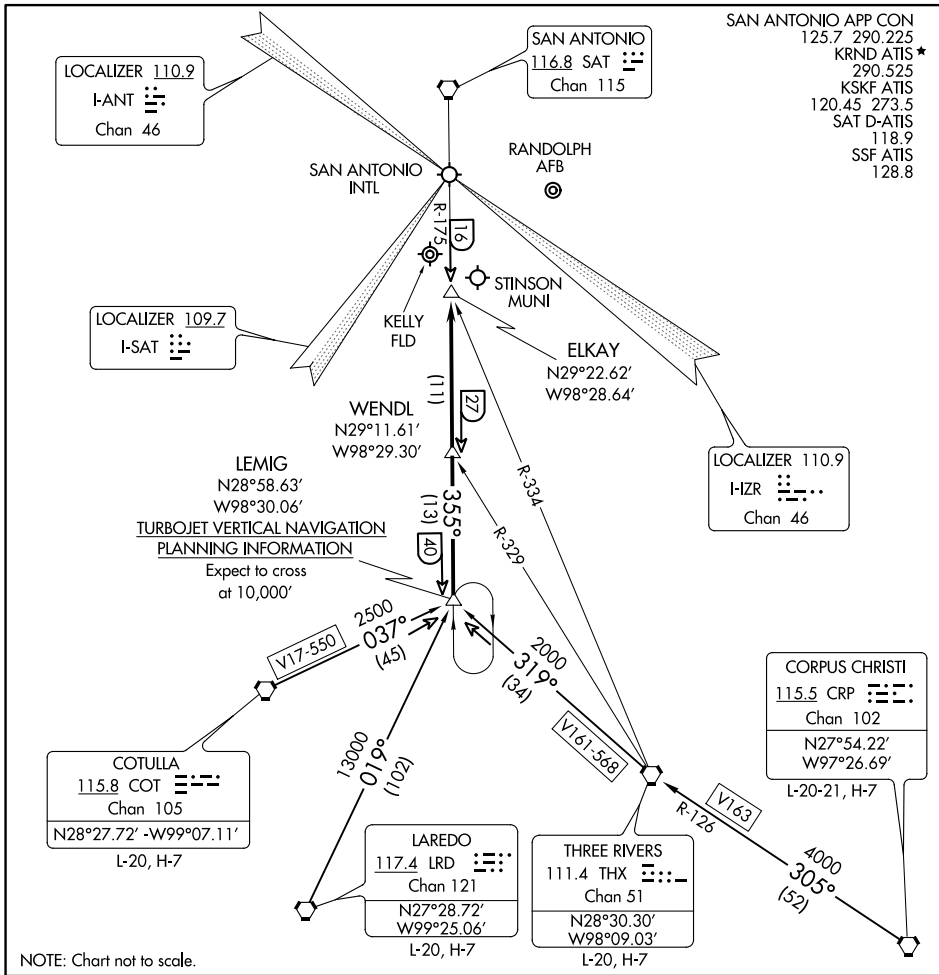
RUNWAY 31L: After KEENM proceed to TRNKS at 3400, then on ILS or LOC Rwy 31L or RNAV (GPS) Y Rwy 31L approach.

SC-3, 22 FEB 2024 to 21 MAR 2024

SC-3, 22 FEB 2024 to 21 MAR 2024

# LEMIG ONE ARRIVAL

SAN ANTONIO, TEXAS



NOTE: Chart not to scale.

## ARRIVAL ROUTE DESCRIPTION

CORPUS CHRISTI TRANSITION (CRP.LEMIG1): From over CRP VORTAC via CRP R-305 and THX R-126 to THX VORTAC, then via THX R-319 to LEMIG INT.

Thence . . .

COTULLA TRANSITION (COT.LEMIG1): From over COT VORTAC via COT R-037 to LEMIG INT. Thence . . .

LAREDO TRANSITION (LRD.LEMIG1): From over LRD VORTAC via LRD R-019 to LEMIG INT. Thence . . .

THREE RIVERS TRANSITION (THX.LEMIG1): From over THX VORTAC via THX R-319 to LEMIG INT. Thence . . .

. . . ALL AIRPORTS: From over LEMIG INT via SAT R-175 to ELKAY INT. Expect radar vectors to final approach course.

# LEMIG ONE ARRIVAL

SAN ANTONIO, TEXAS

# MARCS ONE ARRIVAL

SAN ANTONIO, TEXAS

SAN ANTONIO APP CON

127.1 269.1  
 KRND ATIS★  
 290.525  
 KSKF ATIS  
 120.45 273.5  
 SAT D-ATIS  
 118.9  
 SSF ATIS  
 128.8

WACO  
 115.3 ACT  
 Chan 100  
 N 31°39.74' - W 97°16.14'  
 L-19, H-6

MAVERICK  
 113.1 TTT  
 Chan 78

GOOCH SPRINGS  
 112.5 AGJ  
 Chan 72

BLEWE  
 N31°12.46'  
 W97°12.54'

WINDU  
 N31°31.83'  
 W97°04.95'  
 L-19, H-6

MARCS  
 N29°53.87'  
 W97°51.68'  
 L-15, H-7  
 TURBOJET VERTICAL  
 NAVIGATION PLANNING  
 INFORMATION  
 Expect 13000

LUFKIN  
 112.1 LFK  
 Chan 58  
 N31°09.75'-W94°43.01'  
 L-19-21, H-6

CENTEX  
 112.8 CWK  
 Chan 75  
 N30°22.71'-W97°31.79'  
 L-19-21, H-7

STONEWALL  
 113.8 STV  
 Chan 85

INDUSTRY  
 110.2 IDU  
 Chan 39  
 N29°57.36'-W96°33.73'  
 L-19-21, H-7

LOCALIZER 110.9  
 I-ANT  
 Chan 46

TROOP  
 N29°40.84'  
 W98°22.52'

BRAUN  
 N29°48.77'  
 W98°03.79'

CRAYS  
 N29°55.11'  
 W97°25.99'

SAN ANTONIO  
 116.8 SAT  
 Chan 115

NOTE: RADAR required.

RWY 13R

SAN ANTONIO INTL

RANDOLPH AFB

KELLY FLD

STINSON MUNI

RWY 4

RWY 31L

LOCALIZER 109.7  
 I-SAT  
 Chan 46

LOCALIZER 110.9  
 I-HZ  
 Chan 46

(NARRATIVE ON FOLLOWING PAGE)

NOTE: Chart not to scale

# MARCS ONE ARRIVAL

SAN ANTONIO, TEXAS

SC-3, 22 FEB 2024 to 21 MAR 2024

SC-3, 22 FEB 2024 to 21 MAR 2024



ARRIVAL ROUTE DESCRIPTION

CENTEX TRANSITION (CWK.MARCS1): From over CWK VORTAC via CWK R-205 to MARCS INT. Thence. . . .

INDUSTRY TRANSITION (IDU.MARCS1): From over IDU VORTAC via IDU R-259 to MARCS INT. Thence. . . .

LUFKIN TRANSITION (LFK.MARCS1): From over LFK VORTAC via LFK R-228 and IDU R-044 to IDU VORTAC, then via IDU R-259 to MARCS INT. Thence. . . .

WACO TRANSITION (ACT.MARCS1): From over ACT VORTAC via ACT R-165 to BLEWE INT, then via CWK R-012 to CWK VORTAC, then via CWK R-205 to MARCS INT. Thence. . . .

WINDU TRANSITION (WINDU.MARCS1): From over WINDU INT via CWK R-012 to CWK VORTAC, then via CWK R-205 to MARCS INT. Thence. . . .

. . . . From over MARCS on SAT R-056 to BRAUN, then on SAT R-056 to TROOP. Thence....

SAN ANTONIO INTL (SAT):

LANDING RWY 13R: On SAT R-056 to CRISS. Depart CRISS heading 300° for vectors to final approach course.

LANDING RWY 31L: Depart TROOP heading 140° for vectors to final approach course.

LANDING ALL OTHER RUNWAYS: On SAT R-056 to CRISS. Expect vectors to final approach course.

ALL OTHER AIRPORTS: On SAT R-056 to CRISS. Expect vectors to final approach course.

SC-3, 22 FEB 2024 to 21 MAR 2024

SC-3, 22 FEB 2024 to 21 MAR 2024

# POPPO ONE ARRIVAL (RNAV) Transition Routes

SAN ANTONIO, TEXAS

RNAV 1 - DME/DME/IRU or GPS.

RADAR required.

SAN ANTONIO APP CON  
 125.1 307.0  
 BAZ ATIS  
 119.325  
 KRND ATIS\*  
 290.525  
 KSKF ATIS  
 120.45 273.5  
 SAT D-ATIS  
 118.9  
 SSF ATIS  
 128.8

NOTE: Jet and turboprop aircraft only.

PRTZY

15.41°  
 17.6  
 9000  
 \*3700

MUGSY

15.41°  
 17.1  
 9000  
 \*3700

11 NM

PPNUT  
FL220

DILLO  
FL220

15.41°  
 17.1  
 9000  
 \*3700  
 (41)

10 NM

293°  
 113°

TRVLL

15.41°  
 11.3  
 9000  
 \*3700  
 (6.3)

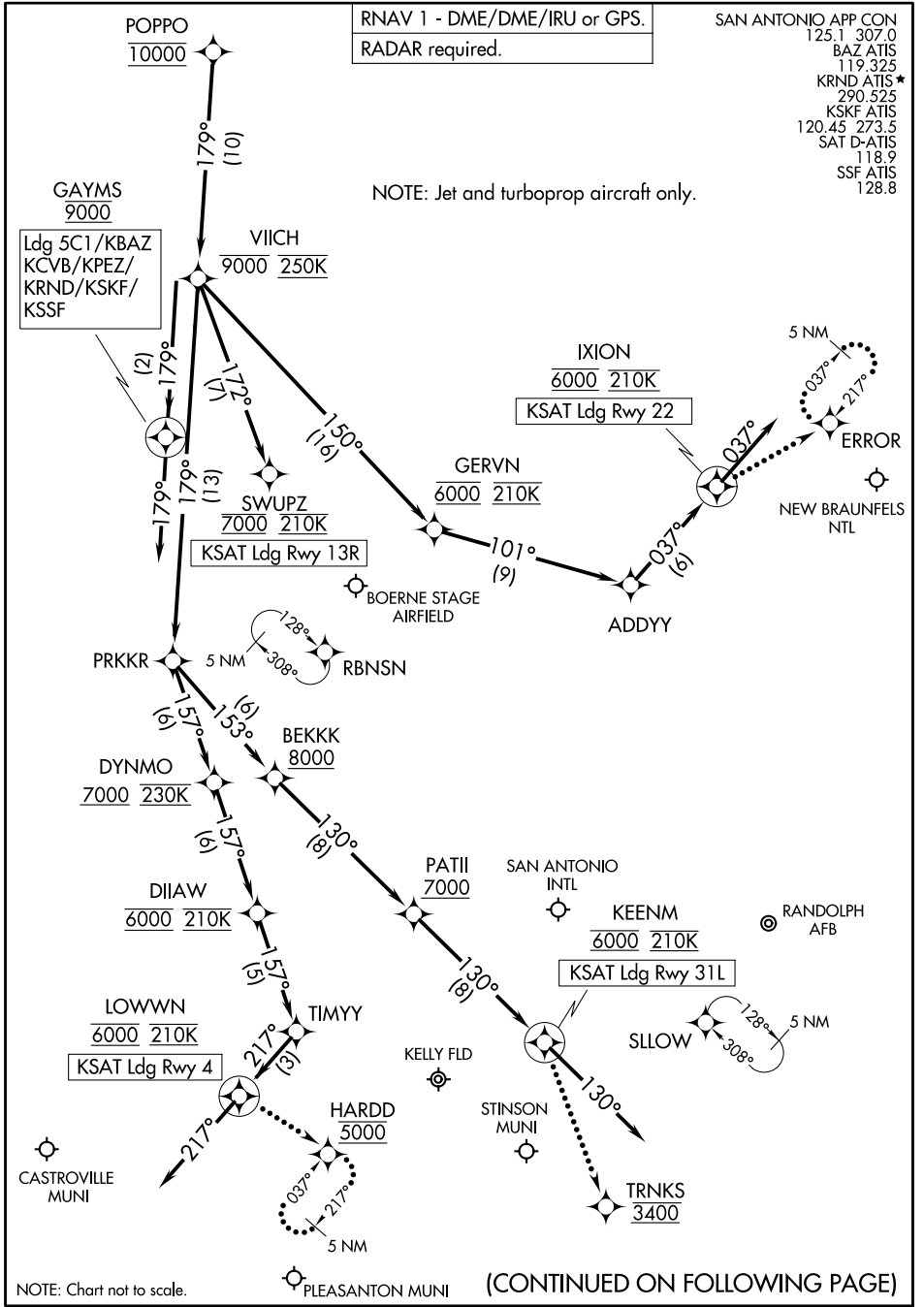
POPPO  
10000

See following page for arrival routes

NOTE: Chart not to scale. (CONTINUED ON FOLLOWING PAGE)

# POPPO ONE ARRIVAL (RNAV) Transition Routes

SAN ANTONIO, TEXAS



RNAV 1 - DME/DME/IRU or GPS.  
RADAR required.

SAN ANTONIO APP CON  
125.1 307.0  
BAZ ATIS  
119.325  
KRND ATIS \*  
290.525  
KSKF ATIS  
120.45 273.5  
SAT D-ATIS  
118.9  
SSF ATIS  
128.8

NOTE: Jet and turboprop aircraft only.

Ldg 5C1/KBAZ  
KCVB/KPEZ/  
KRND/KSKF/  
KSSB

NOTE: Chart not to scale.

(CONTINUED ON FOLLOWING PAGE)

SC-3, 22 FEB 2024 to 21 MAR 2024

SC-3, 22 FEB 2024 to 21 MAR 2024

ARRIVAL ROUTE DESCRIPTION

SAN ANTONIO INTL (KSAT): From POPPO on track 179° to cross VIICH at or below 9000 and at 250K.

LANDING KSAT RUNWAY 4: From VIICH on track 179° to PRKKR, then on track 157° to cross DYNMO at or above 7000 and at 230K, then on track 157° to cross DIIAW at 6000 and at 210K, then on track 157° to TIMYY, then on track 217° to cross LOWWN at 6000 and at 210K, then on track 217°. Expect RADAR vectors to final approach course.

LANDING KSAT RUNWAY 13R: From VIICH on track 172° to cross SWUPZ at 7000 and at 210K. Expect ILS or LOC RWY 13R approach.

LANDING KSAT RUNWAY 22: From VIICH on track 150° to cross GERVN at 6000 and at 210K, then on track 101° to ADDYY, then on track 037° to cross IXION at 6000 and at 210K, then on track 037°. Expect RADAR vectors to final approach course.

LANDING KSAT RUNWAY 31L: From VIICH on track 179° to PRKKR, then on track 153° to cross BEKKK at or above 8000, then on track 130° to cross PATII at or above 7000, then on track 130° to cross KEENM at 6000 and at 210K, then on track 130°. Expect RADAR vectors to final approach course.

LANDING KSKF/KBAZ/KCVB/KSSF/KPEZ/5C1/KRND: From POPPO on track 179° to cross VIICH at or below 9000 and at 250K, then on track 179° to cross GAYMS at 9000, then on track 179°. Expect RADAR vectors to final approach course.

LOST COMMUNICATIONS

KSAT RUNWAY 4: After LOWWN proceed to HARDD at 5000 and hold.

KSAT RUNWAY 22: After IXION proceed to ERROR and hold.

KSAT RUNWAY 31L: After KEENM proceed to TRNKS at 3400, then on ILS or LOC Rwy 31L or RNAV (GPS) Y Rwy 31L approach.

SC-3, 22 FEB 2024 to 21 MAR 2024

SC-3, 22 FEB 2024 to 21 MAR 2024

(MARC'S, QERVO1) 25JAN24

QERVO ONE ARRIVAL (RNAV) Transition Routes

SAN ANTONIO, TEXAS

SAN ANTONIO APP CON  
 127.1 269.1  
 BAZ ATIS  
 119.325  
 KRND ATIS \*  
 290.525  
 KSKF ATIS  
 120.45 273.5  
 SAT D-ATIS  
 118.9  
 SSF ATIS  
 128.8

RNAV 1-DME/DME/IRU or GPS.  
 RADAR required.

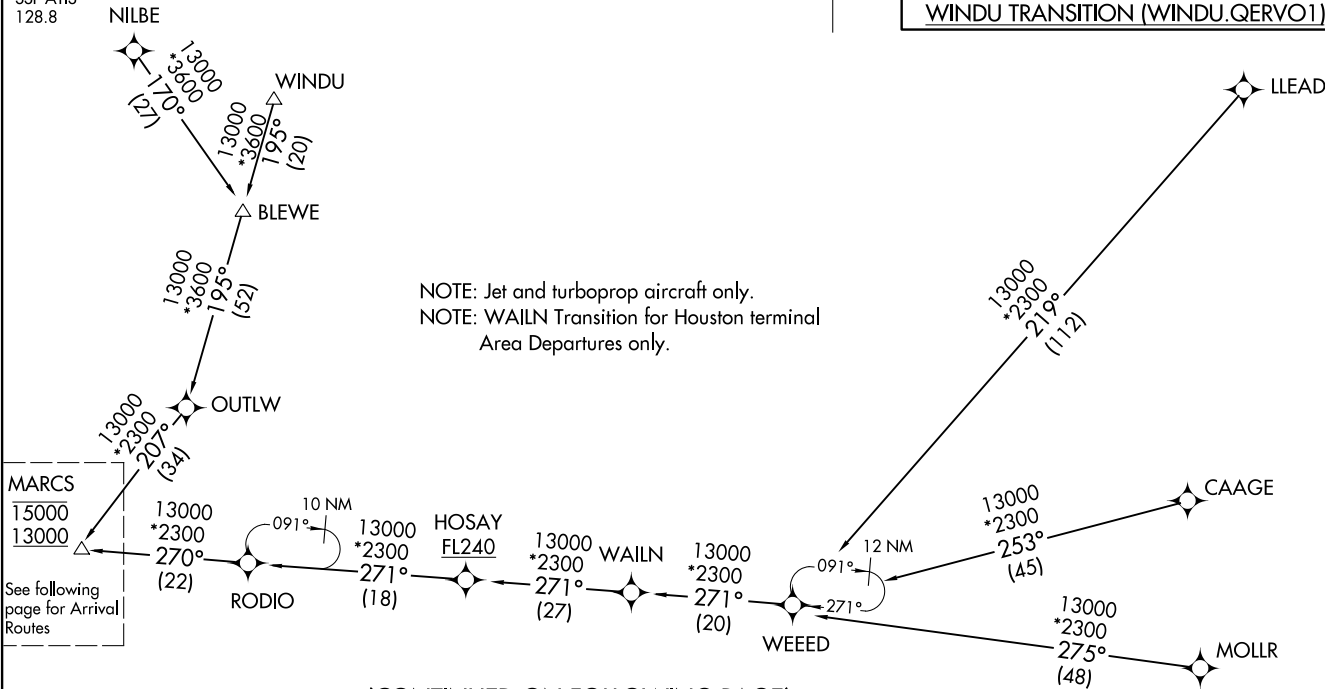


BLEWE TRANSITION (BLEWE.QERVO1)  
CAAGE TRANSITION (CAAGE.QERVO1)  
LLEAD TRANSITION (LLEAD.QERVO1)  
MOLLR TRANSITION (MOLLR.QERVO1)  
NILBE TRANSITION (NILBE.QERVO1)  
WAILN TRANSITION (WAILN.QERVO1)  
WINDU TRANSITION (WINDU.QERVO1)

(MARC'S, QERVO1) 24025

AL-369 (FAA)  
 QERVO ONE ARRIVAL (RNAV) Transition Routes

SAN ANTONIO, TEXAS



NOTE: Jet and turboprop aircraft only.  
 NOTE: WAILN Transition for Houston terminal Area Departures only.

NOTE: Chart not to scale.

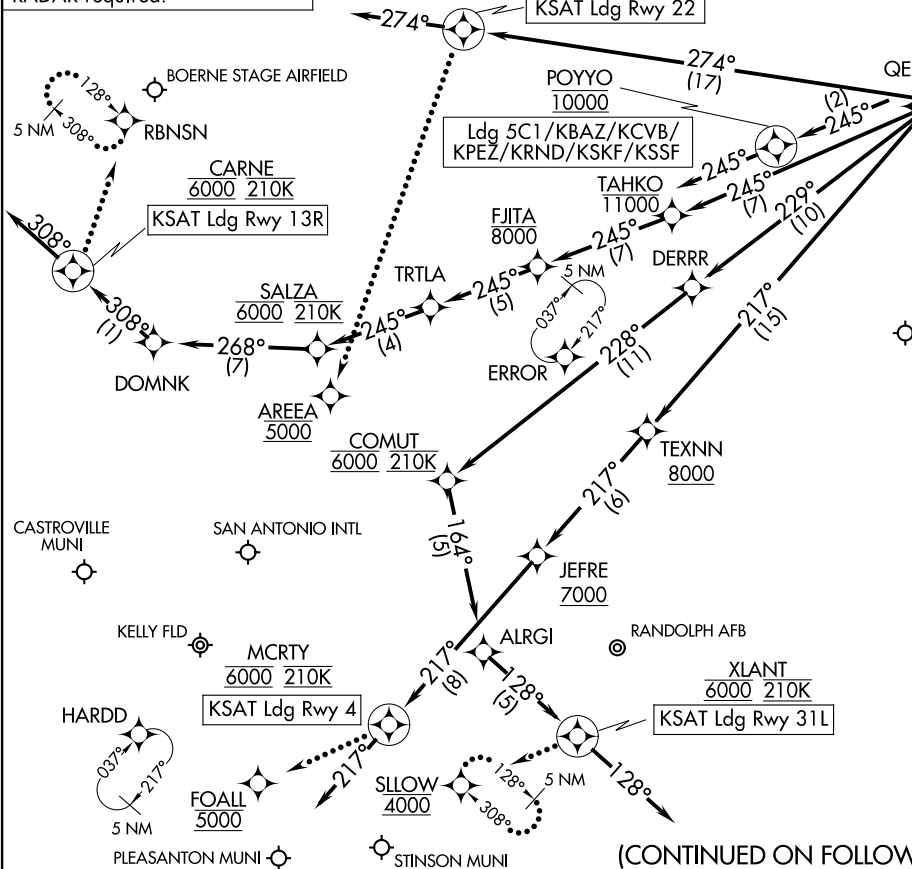
(CONTINUED ON FOLLOWING PAGE)

(MARC3, QERV01) 25JAN24

QERV0 ONE ARRIVAL (RNAV) Arrival Routes

SAN ANTONIO, TEXAS

RNAV 1-DME/DME/IRU or GPS.  
RADAR required.



NOTE: Jet and turboprop aircraft only.  
NOTE: WALLN Transition for Houston terminal Area Departures only.

(CONTINUED ON FOLLOWING PAGE)

NOTE: Chart not to scale.

(MARC3, QERV01) 24025

ALC-369 (FAA)

SAN ANTONIO, TEXAS

QERV0 ONE ARRIVAL (RNAV) Arrival Routes

SAN ANTONIO APP CON  
 127.1 269.1  
 BAZ ATIS  
 119.325  
 KRND ATIS \*  
 290.525  
 KSKF ATIS  
 120.45 273.5  
 SAT D-ATIS  
 118.9  
 SSF ATIS  
 128.8

ARRIVAL ROUTE DESCRIPTION

SAN ANTONIO INTL (KSAT): From MARCS on track 245° to cross PGOUT between 11000 and 13000 and at 280K, then on track 245° to QERVO.

LANDING KSAT RUNWAY 4: From QERVO on track 217° to cross TEXNN at or above 8000, then on track 217° to cross JEFRE at or above 7000, then on track 217° to cross MCRTY at 6000 and at 210K, then on track 217°. Expect RADAR vectors to final approach course.

LANDING KSAT RUNWAY 13R: From QERVO on track 245° to cross TAHKO at or below 11000, then on track 245° to cross FJITA at or below 8000, then on track 245° to TRTLA, then on track 246° to cross SALZA at 6000 and at 210K, then on track 268° to DOMNK, then on track 308° to cross CARNE at 6000 and at 210K, then on track 308°. Expect RADAR vectors to final approach course.

LANDING KSAT RUNWAY 22: From QERVO on track 274° to cross TRITP at 7000 and at 210K, then on track 274°. Expect RADAR vectors to final approach course.

LANDING KSAT RUNWAY 31L: From QERVO on track 229° to DERRR, then on track 228° to cross COMUT at 6000 and at 210K, then on track 164° to ALRGI, then on track 128° to cross XLANT at 6000 and at 210K, then on track 128°. Expect RADAR vectors to final approach course.

LANDING KSKF/KBAZ/KCVB/KSSF/KPEZ/5C1/KRND: From MARCS on track 245° to cross PGOUT between 11000 and 13000 and at 280K, then on track 245° to QERVO, then on track 245° to cross POYYO at 10000, then on track 245°. Expect RADAR vectors to final approach course.

LOST COMMUNICATIONS:

KSAT RUNWAY 4: After MCRTY, proceed to FOALL at 5000, then on ILS or LOC RWY 4 or RNAV (GPS) Y RWY 4 approach.

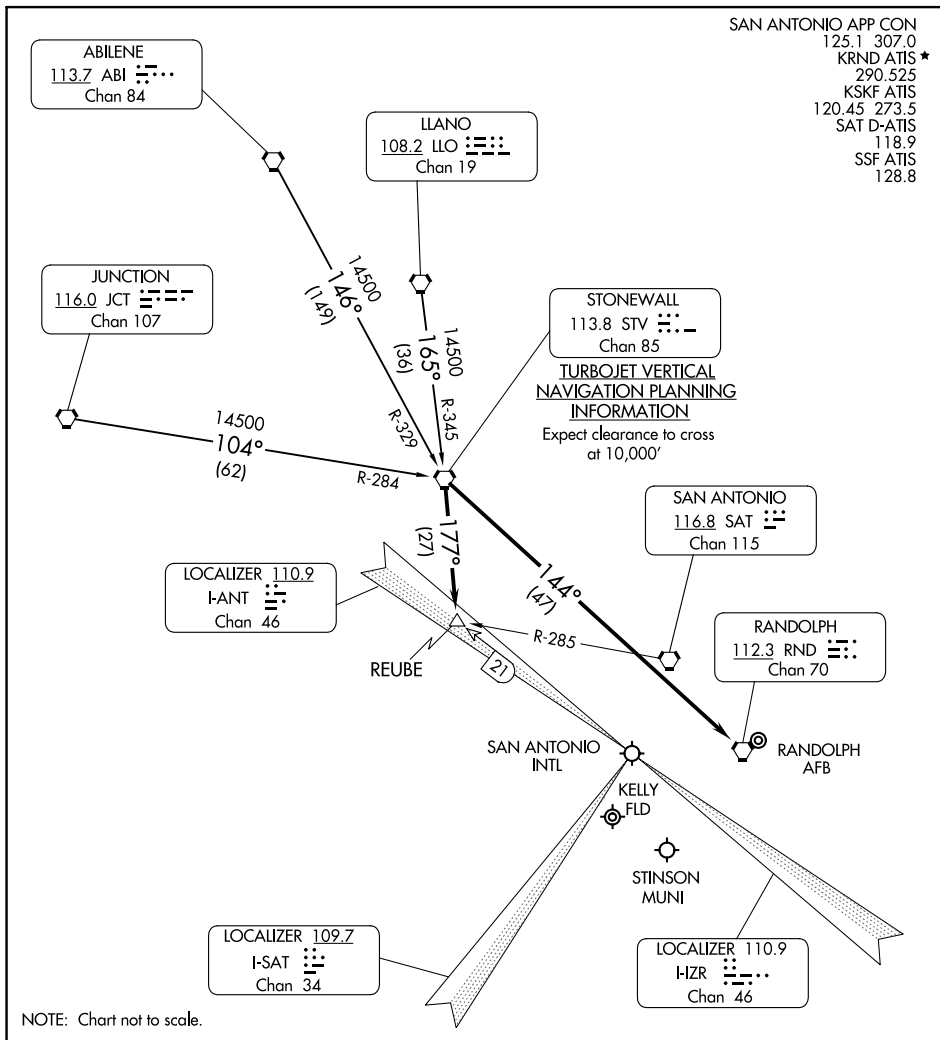
KSAT RUNWAY 13R: After CARNE, proceed to RBNSN and hold.

KSAT RUNWAY 22: After TRITP proceed to AREEA at 5000, then on RNAV (GPS) Y RWY 22 approach.

KSAT RUNWAY 31L: After XLANT, proceed to SLOW at 4000 and hold.

# STONEWALL ONE ARRIVAL

SAN ANTONIO, TEXAS



SC-3, 22 FEB 2024 to 21 MAR 2024

SC-3, 22 FEB 2024 to 21 MAR 2024

## ARRIVAL ROUTE DESCRIPTION

**ABILENE TRANSITION (ABI.STV1):** From over ABI VORTAC via ABI R-146 and STV R-329 to STV VORTAC. Thence . . . .

**JUNCTION TRANSITION (JCT.STV1):** From over JCT VORTAC via JCT R-104 and STV R-284 to STV VORTAC. Thence . . . .

**LLANO TRANSITION (LLO.STV1):** From over LLO VORTAC via LLO R-165 and STV R-345 to STV VORTAC. Thence . . . .

**ALL AIRPORTS EXCEPT RANDOLPH AIR FORCE BASE:** . . . . From over STV VORTAC via STV R-177 to REUBE INT. Expect radar vectors to final approach course.

**RANDOLPH AIR FORCE BASE:** . . . . From over STV VORTAC via direct RND VORTAC.

# STONEWALL ONE ARRIVAL

SAN ANTONIO, TEXAS