

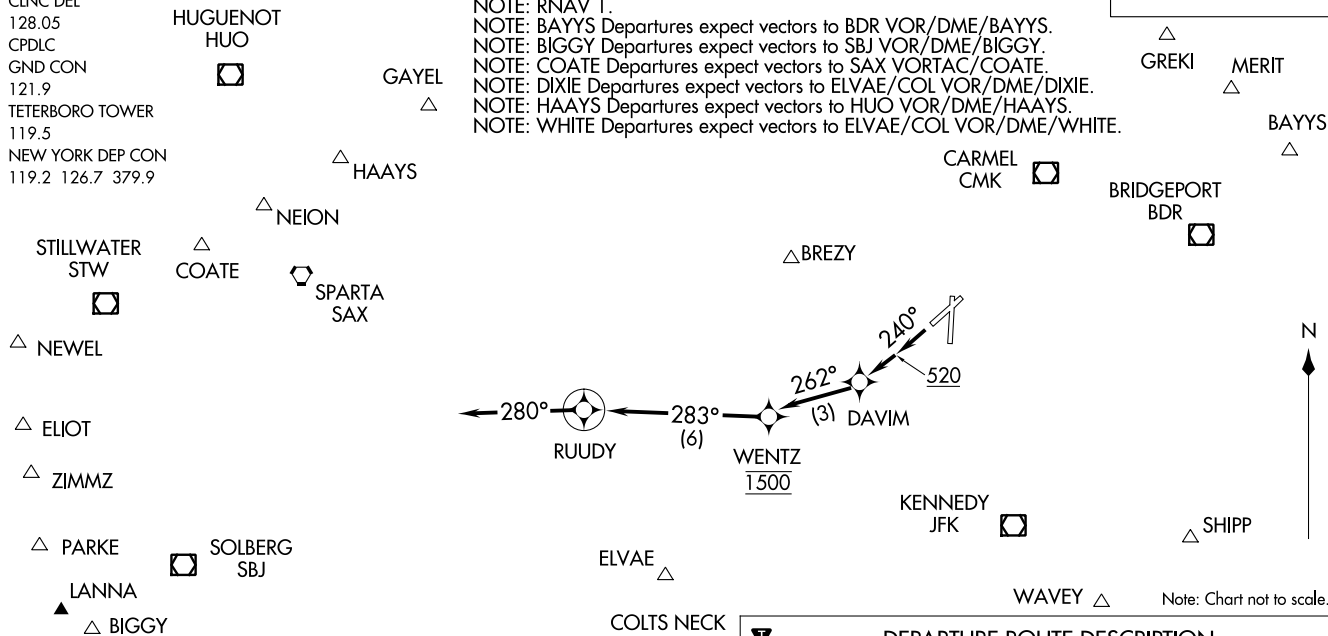
RUUDY SIX DEPARTURE (RNAV)
(RUUDY6.RUUDY) 17AUG17

RUUDY SIX DEPARTURE (RNAV)
(RUUDY6.RUUDY) 19115

D-ATIS
114.2 132.85
CLNC DEL
128.05
CPDLC
GND CON
121.9
TETERBORO TOWER
119.5
NEW YORK DEP CON
119.2 126.7 379.9

NOTE: DME/DME/IRU or GPS required.
NOTE: RADAR required.
NOTE: RNAV 1.
NOTE: BAYYS Departures expect vectors to BDR VOR/DME/BAYYS.
NOTE: BIGGY Departures expect vectors to SBJ VOR/DME/BIGGY.
NOTE: COATE Departures expect vectors to SAX VORTAC/COATE.
NOTE: DIXIE Departures expect vectors to ELVAE/COL VOR/DME/DIXIE.
NOTE: HAAYS Departures expect vectors to HUO VOR/DME/HAAYS.
NOTE: WHITE Departures expect vectors to ELVAE/COL VOR/DME/WHITE.

**TOP ALTITUDE:
2000**



TAKEOFF MINIMUMS:
Rwys 1, 6, 19: NA-ATC.
Rwy 24: Standard with minimum climb of 500' per NM to 520. If unable to accept climb rate, advise ATC on initial contact.

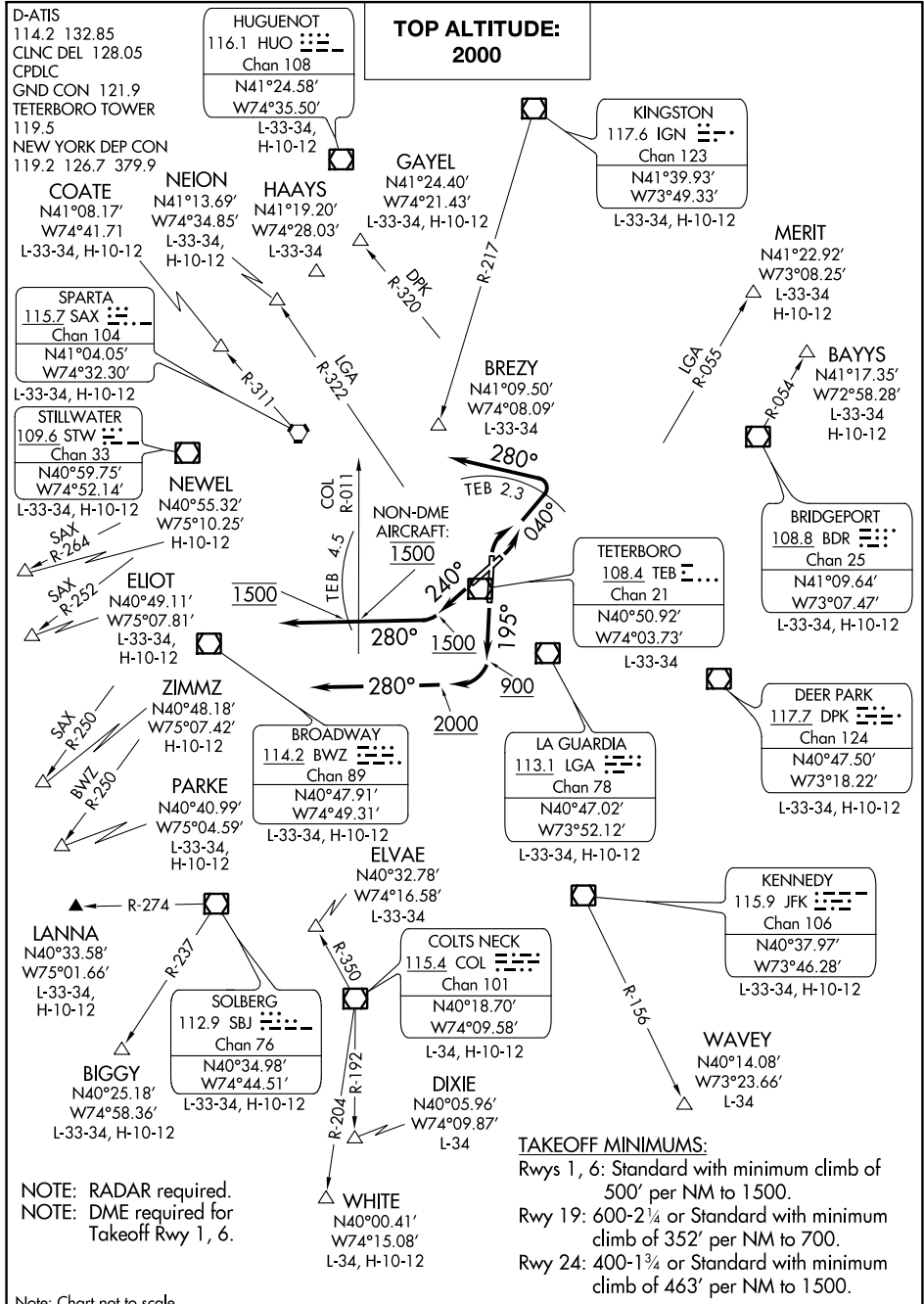
DEPARTURE ROUTE DESCRIPTION
TAKEOFF RWY 24: Climb heading 240° to 520, then direct DAVIM, then on track 262° to cross WENTZ at 1500, then on track 283° to RUUDY, then on heading 280° or as assigned by ATC, thence

. . . . expect vectors to assigned route/fix. Maintain 2000; expect clearance to filed altitude ten minutes after departure.

TETERBORO, NEW JERSEY
TETERBORO (TEJB)

TETERBORO, NEW JERSEY
TETERBORO (TEJB)

TEREBORO THREE DEPARTURE



NE-2, 25 FEB 2021 to 25 MAR 2021

NE-2, 25 FEB 2021 to 25 MAR 2021

Note: Chart not to scale.

TEREBORO THREE DEPARTURE

TAKEOFF MINIMUMS:
 Rwy 1, 6: Standard with minimum climb of 500' per NM to 1500.
 Rwy 19: 600-2¼ or Standard with minimum climb of 352' per NM to 700.
 Rwy 24: 400-1¾ or Standard with minimum climb of 463' per NM to 1500.

TETERBORO THREE DEPARTURE



DEPARTURE ROUTE DESCRIPTION

TAKEOFF RWY 1: Climbing right turn heading 040° to TEB 2.3 DME, then turn left heading 280°, maintain 2000, thence

TAKEOFF RWY 6: Climbing left turn heading 040° to TEB 2.3 DME, then turn left heading 280°, maintain 2000, thence

TAKEOFF RWY 19: Climb on heading 195° to 900, then climbing right turn to 2000 heading 280°, maintain 2000 (do not climb above 2000), thence

TAKEOFF RWY 24: Climb on heading 240° to 1500 (do not climb above 1500), then turn right heading 280°, cross TEB 4.5 DME at 1500 (non-DME aircraft cross COL R-011 at 1500), then climb and maintain 2000, thence

. . . . as per notes or via vector to assigned route/fix. Expect clearance to filed altitude/flight level ten minutes after departure.

PROCEDURAL NOTES:

BAYYS Departures expect vectors to BDR/BDR R-054.

BIGGY Departures expect vectors to SBJ/SBJ R-237.

BREZY Departures expect vectors to IGN R-217 to BREZY.

COATE Departures expect vectors to SAX/SAX R-311.

ELIOT Departures expect vectors to SAX R-252. ELIOT authorized for all aircraft types but restricted to a final altitude of 14000 to 16000.

GAYEL Departures expect vectors to R-320.

HAAYS Departures expect vectors to HUO.

LANNA Departures expect vectors to SBJ/SBJ R-274.

MERIT Departures expect vectors to LGA R-055.

NEION Departures expect vectors to LGA R-322.

NEWEL Departures expect vectors to SAX R-264. NEWEL authorized only for jet aircraft requesting a final altitude of FL180 and above.

PARKE Departures expect vectors to BWZ R-250.

WAVEY Departures expect vectors to JFK/JFK R-156.

WHITE/DIXIE Departures expect vectors to COL R-350 or ELVAE/COL. Thence WHITE on COL R-204 or DIXIE on COL R-192.

ZIMMZ Departures expect vectors to SAX R-250. ZIMMZ authorized for all aircraft types but restricted to final altitude of FL180 and above.

NE-2, 25 FEB 2021 to 25 MAR 2021

NE-2, 25 FEB 2021 to 25 MAR 2021

TETERBORO THREE DEPARTURE