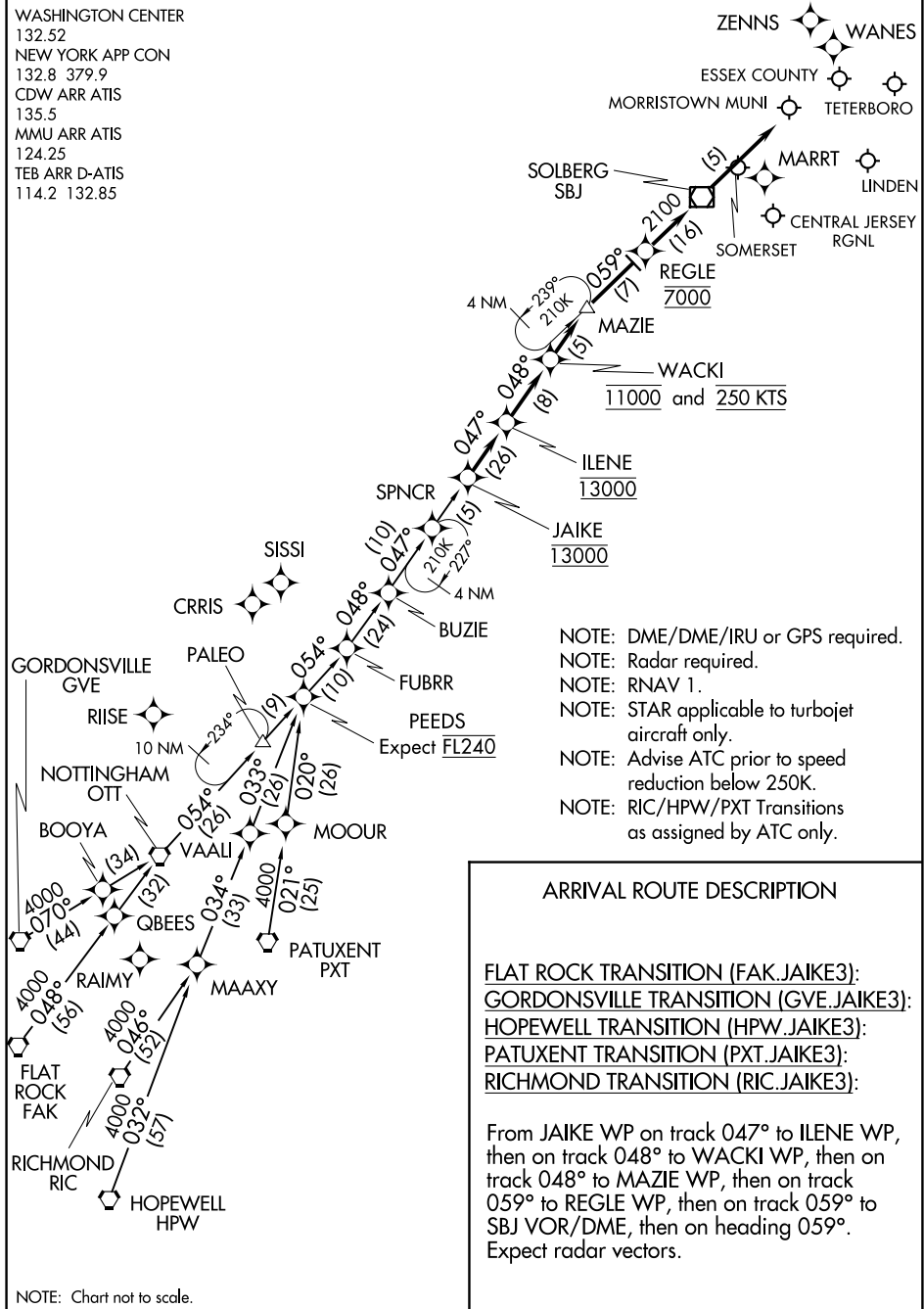


# JAIKE THREE ARRIVAL (RNAV)

TETERBORO, NEW JERSEY

WASHINGTON CENTER  
 132.52  
 NEW YORK APP CON  
 132.8 379.9  
 CDW ARR ATIS  
 135.5  
 MMU ARR ATIS  
 124.25  
 TEB ARR D-ATIS  
 114.2 132.85



NOTE: Chart not to scale.

- NOTE: DME/DME/IRU or GPS required.
- NOTE: Radar required.
- NOTE: RNAV 1.
- NOTE: STAR applicable to turbojet aircraft only.
- NOTE: Advise ATC prior to speed reduction below 250K.
- NOTE: RIC/HPW/PXT Transitions as assigned by ATC only.

## ARRIVAL ROUTE DESCRIPTION

- FLAT ROCK TRANSITION (FAK.JAIKE3):
- GORDONSVILLE TRANSITION (GVE.JAIKE3):
- HOPEWELL TRANSITION (HPW.JAIKE3):
- PATUXENT TRANSITION (PXT.JAIKE3):
- RICHMOND TRANSITION (RIC.JAIKE3):

From JAIKE WP on track 047° to ILENE WP, then on track 048° to WACKI WP, then on track 048° to MAZIE WP, then on track 059° to REGLE WP, then on track 059° to SBJ VOR/DME, then on heading 059°. Expect radar vectors.

# JAIKE THREE ARRIVAL (RNAV)

TETERBORO, NEW JERSEY

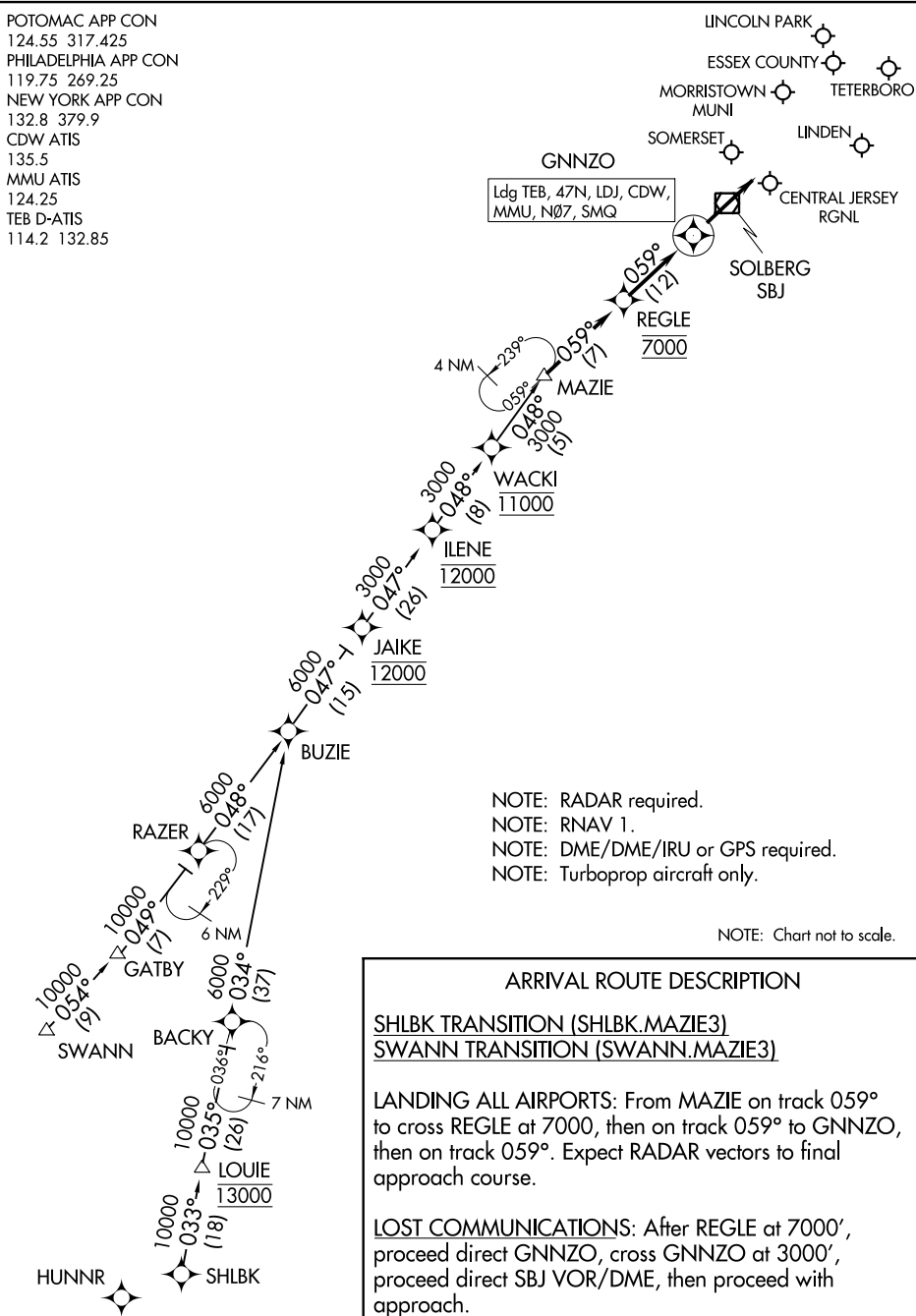
NE-2, 25 FEB 2021 to 25 MAR 2021

NE-2, 25 FEB 2021 to 25 MAR 2021

# MAZIE THREE ARRIVAL (RNAV)

TETERBORO, NEW JERSEY

POTOMAC APP CON  
 124.55 317.425  
 PHILADELPHIA APP CON  
 119.75 269.25  
 NEW YORK APP CON  
 132.8 379.9  
 CDW ATIS  
 135.5  
 MMU ATIS  
 124.25  
 TEB D-ATIS  
 114.2 132.85



NOTE: RADAR required.  
 NOTE: RNAV 1.  
 NOTE: DME/DME/IRU or GPS required.  
 NOTE: Turboprop aircraft only.

NOTE: Chart not to scale.

**ARRIVAL ROUTE DESCRIPTION**

**SHLBK TRANSITION (SHLBK.MAZIE3)**  
**SWANN TRANSITION (SWANN.MAZIE3)**

LANDING ALL AIRPORTS: From MAZIE on track 059° to cross REGLE at 7000, then on track 059° to GNNZO, then on track 059°. Expect RADAR vectors to final approach course.

LOST COMMUNICATIONS: After REGLE at 7000', proceed direct GNNZO, cross GNNZO at 3000', proceed direct SBJ VOR/DME, then proceed with approach.

NE-2, 25 FEB 2021 to 25 MAR 2021

NE-2, 25 FEB 2021 to 25 MAR 2021

# MAZIE THREE ARRIVAL (RNAV)

TETERBORO, NEW JERSEY

(LVZ.LVZ4) 200CT11

WILKES-BARRE FOUR ARRIVAL

TETERBORO, NEW JERSEY

NEW YORK APP CON  
127.6 379.9  
EW R D-ATIS  
115.7

JAMESTOWN  
114.7 JHW  
Chan 94  
N42°11.32'-W79°07.28'  
L-30, H-10

ELMIRA  
109.65 ULW  
Chan 33 (Y)

DMACK  
N41°47.15'  
W77°33.12'

WILKES-BARRE  
111.6 LVZ  
Chan 53  
N41°16.37'-W75°41.37'  
Expect FL180

HUGUENOT  
116.1 HUO  
Chan 108

HOXIE  
N41°51.90'  
W77°51.16'

STENT  
N41°40.74'  
W77°09.17'

SPARTA  
115.7 SAX  
Chan 104

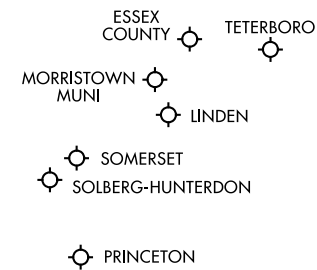
SLATE RUN  
113.9 SLT  
Chan 86

HARTY  
N41°04.27'  
W75°05.39'

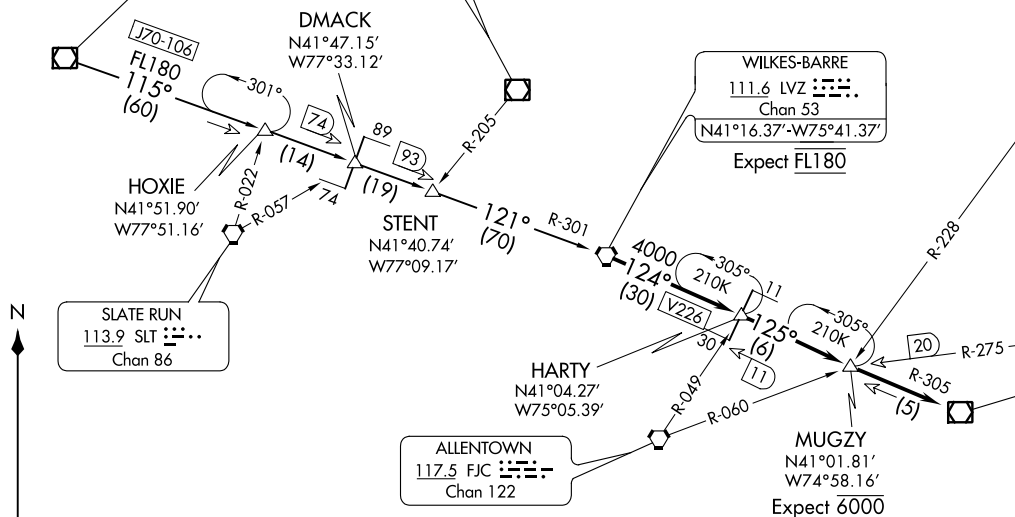
MUGZY  
N41°01.81'  
W74°58.16'  
Expect 6000

STILLWATER  
109.6 STW  
Chan 33  
N40°59.75'-W74°52.14'

ALLENTOWN  
117.5 FJC  
Chan 122



NOTE: This STAR applicable to all aircraft capable of 250 KIAS or greater landing at Teterboro, Morristown Muni, Essex County, Princeton, Solberg-Hunterdon, Linden, and Somerset.  
NOTE: Advise ATC prior to speed reduction below 250 Knots.



ARRIVAL ROUTE DESCRIPTION

JAMESTOWN TRANSITION (JHW.LVZ4): From over JHW VOR/DME on JHW R-115 and LVZ R-301 to LVZ VORTAC. Thence . . . .  
. . . . from over LVZ VORTAC, on LVZ R-124 and STW R-305 to STW VOR/DME. Expect radar vectors to final approach course.

NOTE: Chart not to scale.

(LVZ.LVZ4) 20310

WILKES-BARRE FOUR ARRIVAL

TETERBORO, NEW JERSEY

AL-890 (FAA)