

22083

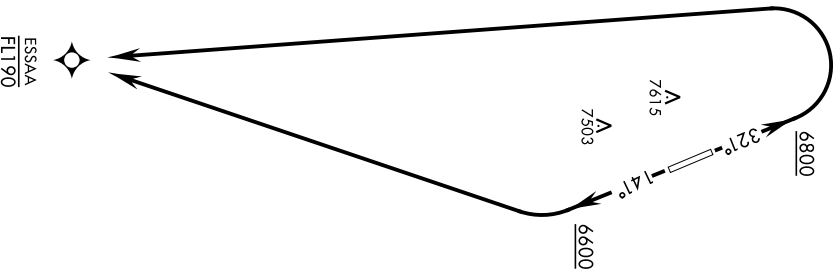
ESSAA ONE (RNAV) DEPARTURE (ESSAA1 • ESSAA)

TONOPAH TEST RANGE (KTNX)
TONOPAH, NEVADA

AWOS 113.0
GND CON
127.25 335.5
SILVERBOW TOWER ★
124.75 257.95
NEELIS CONTROL
119.35 254.4

[USAF]	AL-3188	Rwy	Knots	60	120	180	240	300	360
1.4	ⓐ	V/V(fpm)	387	774	1161	1548	1935	2322	
32	ⓑ	V/V(fpm)	336	672	1008	1344	1680	2016	

Minimum Climb Rate
ⓐ to 8200
ⓑ to 8300



RNAV1

GPS REQUIRED

DEPARTURE ROUTE DESCRIPTION

TAKEOFF RWY 14: Climb on heading 141° to 6600, then right turn direct to cross ESSAA at or below FL190 or as assigned by ATC.

TAKEOFF RWY 32: Climb on heading 321° to 6800, then left turn direct ESSAA maintain at or below FL190 or as assigned by ATC.

ESSAA ONE (RNAV) DEPARTURE (ESSAA1 • ESSAA)

Orig 24MAR22

TONOPAH, NEVADA
TONOPAH TEST RANGE (KTNX)

22083

JAYSN ONE (RNAV) DEPARTURE (JAYSNI • JAYSN)

TONOPAH TEST RANGE (KTNX)
TONOPAH, NEVADA

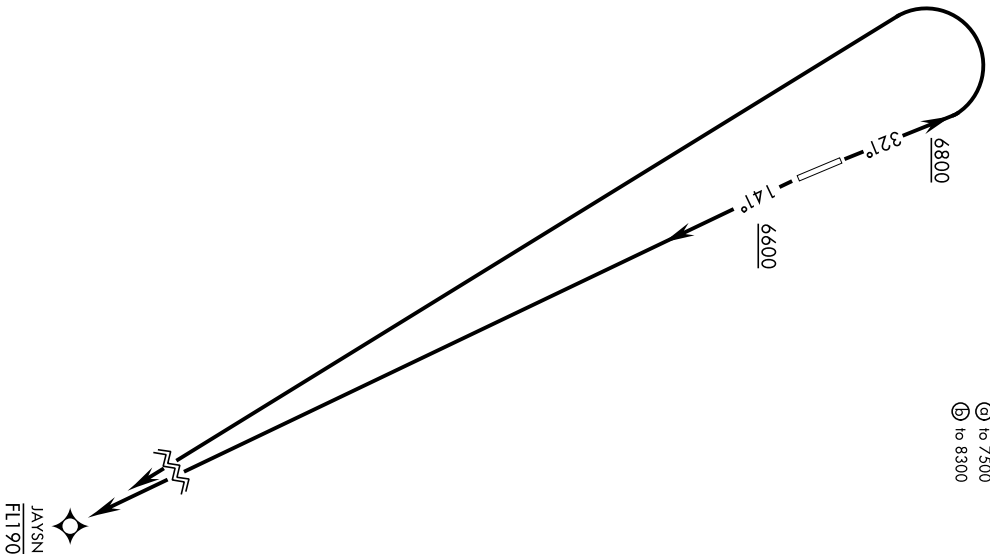
AWOS 113.0
GND CON
127.25 335.5
SILVERBOW TOWER ★
124.75 257.95
NELLS CONTROL
119.35 254.4

[USAF] AL-3188

Rwy	Knots	60	120	180	240	300	360
14	Ⓞ V/V(fpm)	246	492	738	984	1230	1476
32	Ⓟ V/V(fpm)	336	672	1008	1344	1680	2016

Minimum Climb Rate

Ⓞ to 7500
Ⓟ to 8300



RNAVI

GPS REQUIRED

DEPARTURE ROUTE DESCRIPTION

TAKEOFF RWY 14: Climb on heading 141° to 6600, then direct to cross JAYSN at or below FL190 or as assigned by ATC.

TAKEOFF RWY 32: Climb on heading 321° to 6800, then left turn direct JAYSN or as assigned by ATC.

JAYSN ONE (RNAV) DEPARTURE (JAYSNI • JAYSN)

Orig 24MAR22

TONOPAH, NEVADA
TONOPAH TEST RANGE (KTNX)

22083

LEAHI ONE (RNAV) DEPARTURE (LEAHI1 - LEAHI)

TONOPAH TEST RANGE (KTNX)
TONOPAH, NEVADA

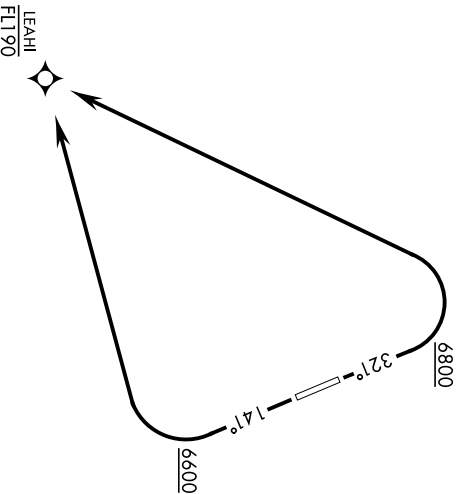
AWOS 113.0
GND CON
127.25 335.5
SILVERBOW TOWER *
124.75 257.95
NELLIS CONTROL
119.35 254.4

[USAF] AL-3188

Rwy	Knots	60	120	180	240	300	360
14 (A)	V/V(fpm)	387	774	1161	1548	1935	2322
32 (B)	V/V(fpm)	336	672	1008	1344	1680	2016

Minimum Climb Rate

(A) to 8200
(B) to 8300



RNAVI

GPS REQUIRED

DEPARTURE ROUTE DESCRIPTION

TAKEOFF RWY 14: Climb on heading 141° to 6600, then right turn direct to cross LEAHI1
dt or below FL190 or as assigned by ATC.

TAKEOFF RWY 32: Climb on heading 321° to 6800, then left turn direct to cross LEAHI1
dt or below FL190 or as assigned by ATC.

LEAHI ONE (RNAV) DEPARTURE (LEAHI1 - LEAHI)

Orig 24MAR22

TONOPAH, NEVADA
TONOPAH TEST RANGE (KTNX)

18200

RANGE TWO (RNAV) DEPARTURE (RANGE2•TPH)

TONOPAH TEST RANGE (KTNX)
SHL-3188 [USAF] TONOPAH, NEVADA

GND CON
127.25 335.5
SILVERBOW TOWER ★
124.75 257.95
NELUS CONTROL
119.35 254.4

Rwy	Knots	60	120	180	240	300	360
14	ⓐ V/V(fpm)	205	410	615	820	1025	1230
32	ⓑ V/V(fpm)	260	520	780	1040	1300	1560
32	ⓒ V/V(fpm)	263	526	789	1052	1315	1578

MINIMUM CLIMB RATE

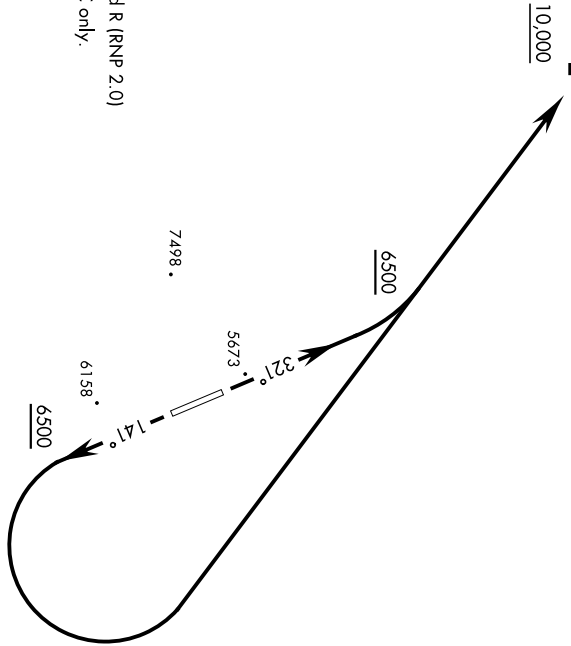
- ⓐ to 7500
- ⓑ to 5900
- ⓒ to 10,000

TONOPAH
TPH

L-9, H-3

10,000

8840



For use by E/F/G and R (RNP 2.0)
equipped A/C only.

GPS REQUIRED

DEPARTURE ROUTE DESCRIPTION

- TAKE-OFF RMY 14: Climb heading 141°. When leaving 6500 turn left direct
- TPH VORTAC, cross TPH at or above 10,000.
- TAKE-OFF RMY 32: Climb heading 321°. When leaving 6500 turn left direct
- TPH VORTAC, cross TPH at or above 10,000.

RANGE TWO (RNAV) DEPARTURE (RANGE2•TPH)

TONOPAH, NEVADA
TONOPAH TEST RANGE (KTNX)

22083

SILVER ONE DEPARTURE (SILVR1 • SILVR)

TONOPAH TEST RANGE (KTNX)
TONOPAH, NEVADA

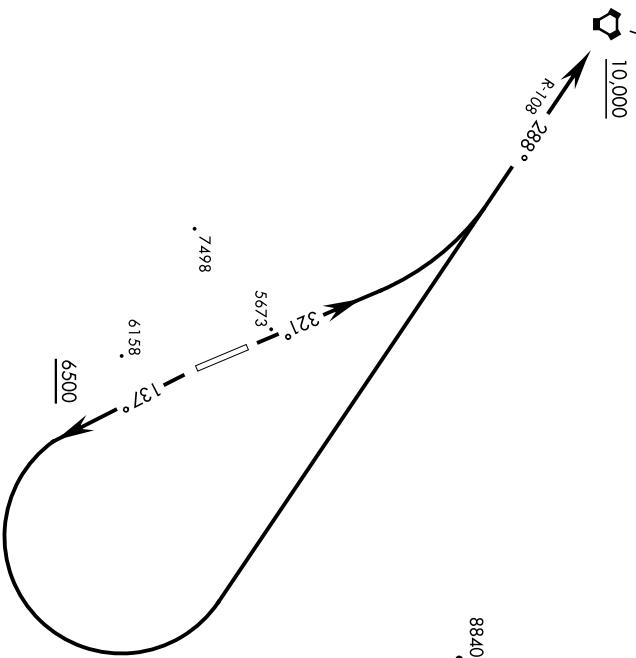
GND CON
127.25 335.5
SILVERBOW TOWER ★
124.75 257.95
NEILIS CONTROL
119.35 254.4

Rwy	Knots	60	120	180	240	300	360
14	ⓐ V/V(fpm)	220	440	660	880	1100	1320
32	ⓑ V/V(fpm)	260	520	780	1040	1300	1560
32	ⓒ V/V(fpm)	261	522	783	1044	1305	1566

Minimum Climb Rate

- ⓐ to 7300
- ⓑ to 5900
- ⓒ to 10,000

TONOPAH
116.0 TPH
Chen 107
L-9, H-3



DEPARTURE ROUTE DESCRIPTION



TAKEOFF RWY 14: Climb heading 137°, when leaving 6500 turn left direct TPH VORTAC. Cross TPH at or above 10,000.

TAKEOFF RWY 32: Climb heading 321° to intercept TPH VORTAC R-108 direct TPH. Cross TPH at or above 10,000.

SILVER ONE DEPARTURE (SILVR1 • SILVR)

Orig 24MAR22

TONOPAH, NEVADA
TONOPAH TEST RANGE (KTNX)

18200

STOFF TWO DEPARTURE (STOFF2•STOFF)

SM-L3188 [USAF]

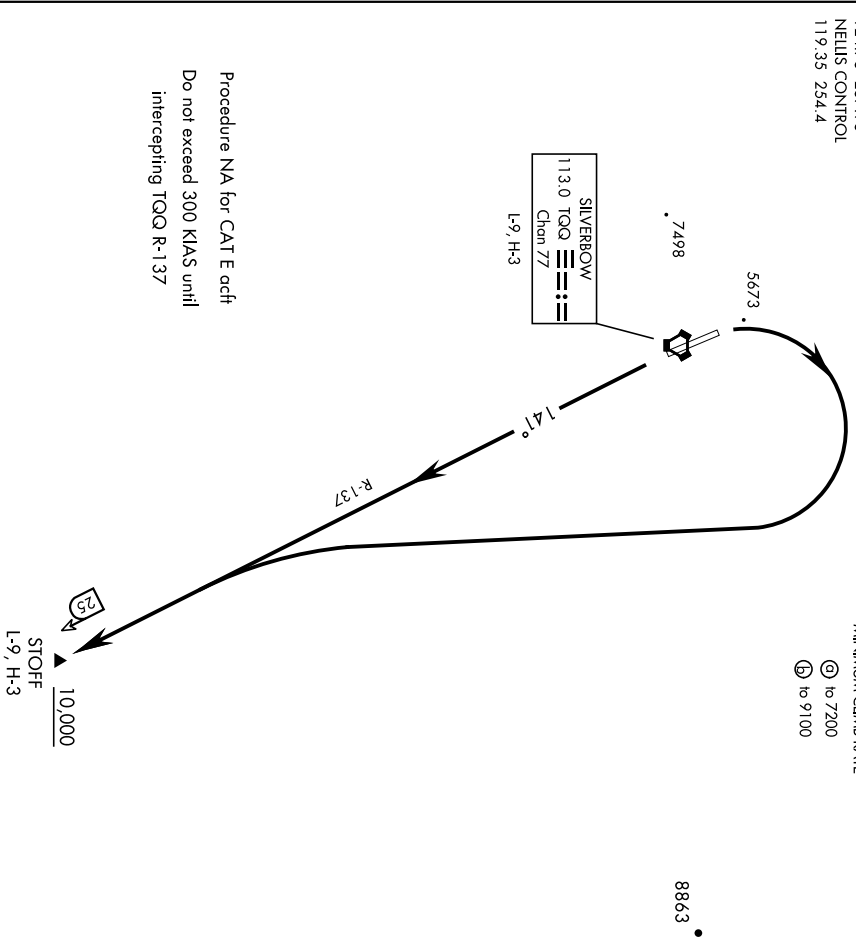
TONOPAH TEST RANGE (KTNX)
TONOPAH, NEVADA

GND CON
127.25 335.5
SILVERBOW TOWER ★
124.75 257.95
NEELUS CONTROL
119.35 254.4

Rwy	Knots	60	120	180	240	300	360
14	Ⓞ V/V(fpm)	205	410	615	820	1025	1230
32	Ⓞ V/V(fpm)	260	520	780	1040	1300	1560

MINIMUM CLIMB RATE

Ⓞ to 7200
Ⓛ to 9100



Procedure NA for CAT E acft
Do not exceed 300 KIAS until
intercepting TQO R-137

DEPARTURE ROUTE DESCRIPTION

TAKE-OFF RWWY 14: Climb heading 141° to intercept TQO VORTAC R-137 to STOFF,
cross STOFF at or above 10,000.

TAKE-OFF RWWY 32: Climbing right turn to intercept TQO VORTAC R-137 to STOFF,
cross STOFF at or above 10,000.

STOFF TWO DEPARTURE (STOFF2•STOFF)

TONOPAH, NEVADA
TONOPAH TEST RANGE (KTNX)

22083

TONOPAH THREE (RNAV) DEPARTURE (TPH3 - TPH)

TONOPAH TEST RANGE (KTNX)

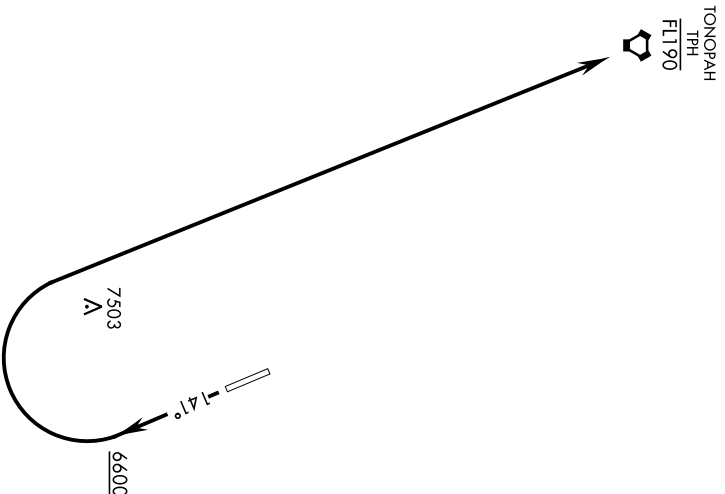
TONOPAH, NEVADA

AWOS 113.0
GND CON
127.25 335.5
SILVERBOW TOWER ★
124.73 257.99
NELLIS CONTROL
119.35 254.4

AL-3188 [USAF]

Rwy	Knots	60	120	180	240	300	360
14	V/V[ft/min]	387	774	1161	1548	1935	2322

Minimum Climb Rate to 8200



RNAV1
GPS REQUIRED

▼ DEPARTURE ROUTE DESCRIPTION

TAKE-OFF RWY 14: Climb on heading 141° to 6600, then right turn direct to cross TPH at or below FL190 or as assigned by ATC.

TONOPAH THREE (RNAV) DEPARTURE (TPH3 - TPH)

Orig 24MAR22

TONOPAH, NEVADA
TONOPAH TEST RANGE (KTNX)

18200

TUMBE ONE (RNAV) DEPARTURE (TUMBE1 • TUMBE)

TONOPAH TEST RANGE (KTNX)
TONOPAH, NEVADA

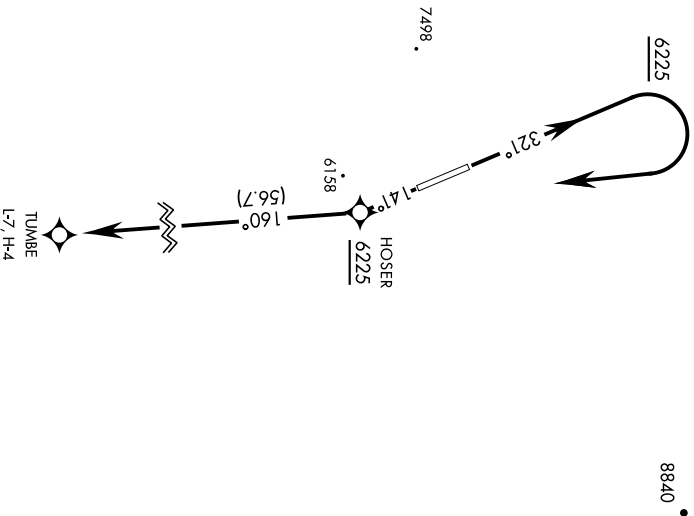
GND CON
127.25 335.5
SILVERBOW TOWER ★
124.75 257.95
NEUS CONTROL
119.35 254.4

SHL-3188 [USAF]

Rwy	Knots	60	120	180	240	300	360
14	(A) V/V(fpm)	300	600	900	1200	1500	1800
32	(B) V/V(fpm)	265	530	795	1060	1325	1590

Minimum Climb Rate

(A) to 10,700
(B) to 5900



GPS REQUIRED

For use by E/F/G and R (RNP 2.0)
equipped A/C only.

DEPARTURE ROUTE DESCRIPTION

TAKE-OFF RWY 14: Fly heading 141°, at 6225 (HOSER) turn right direct TUMBE.

TAKE-OFF RWY 32: Fly heading 321°, at 6225 turn right direct TUMBE.

TUMBE ONE (RNAV) DEPARTURE (TUMBE1 • TUMBE)

TONOPAH, NEVADA
TONOPAH TEST RANGE (KTNX)